

RECEIVE UPDATES ON WATERFRONT WATER PLAY PARK IMPROVEMENTS

20 January 2026

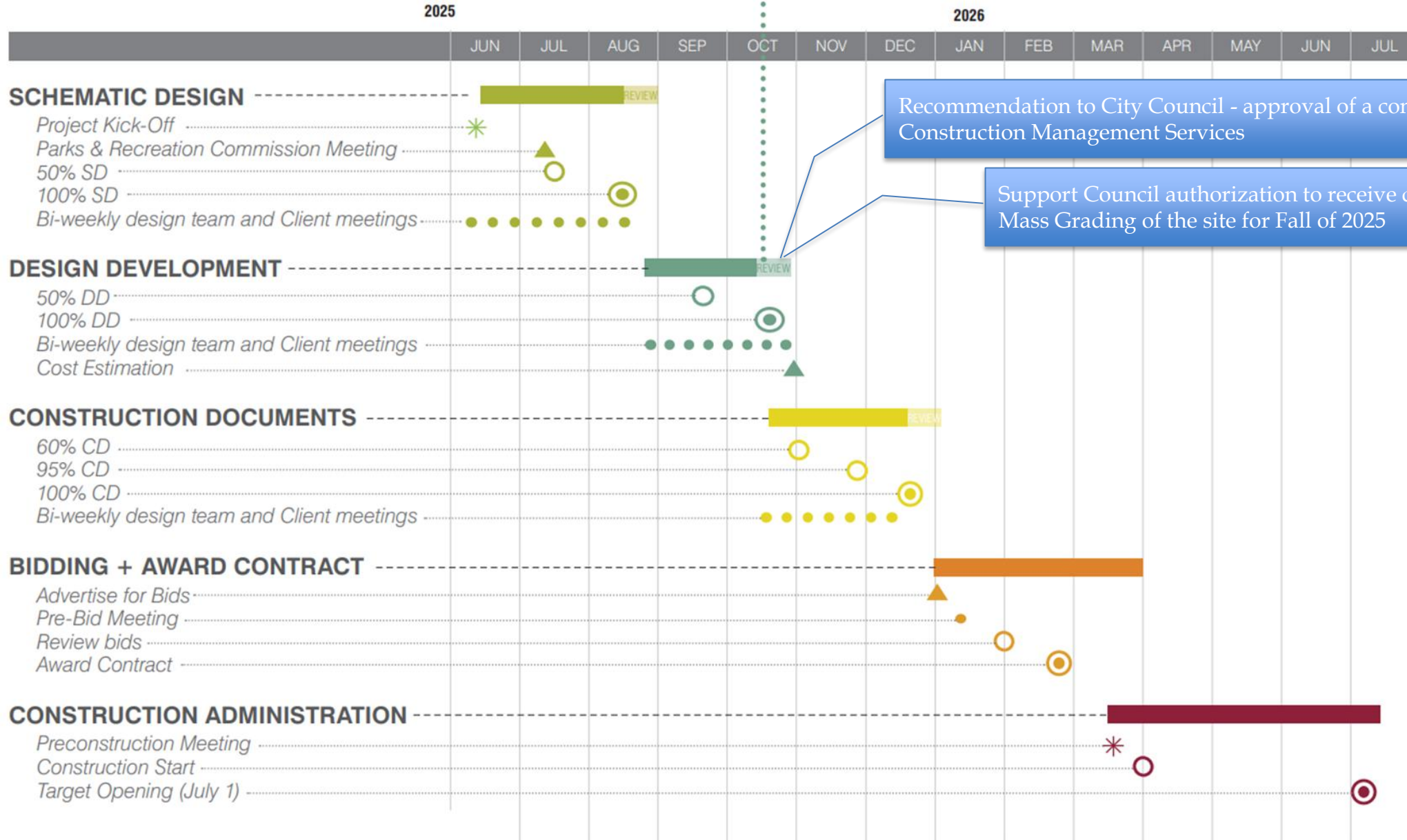




FAVORABLE PROGRESS CONTINUES

SCHEDULE

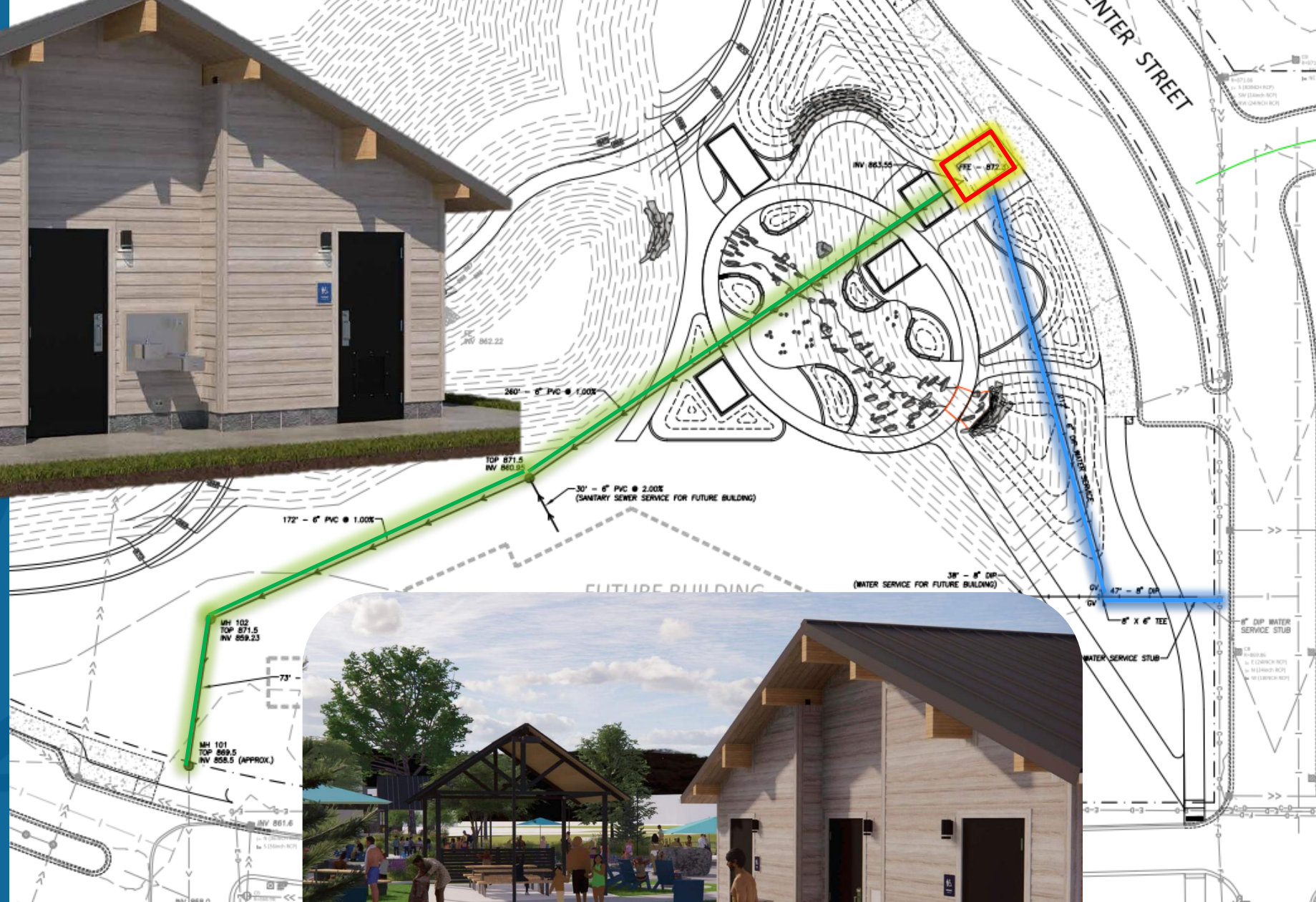
WE ARE HERE

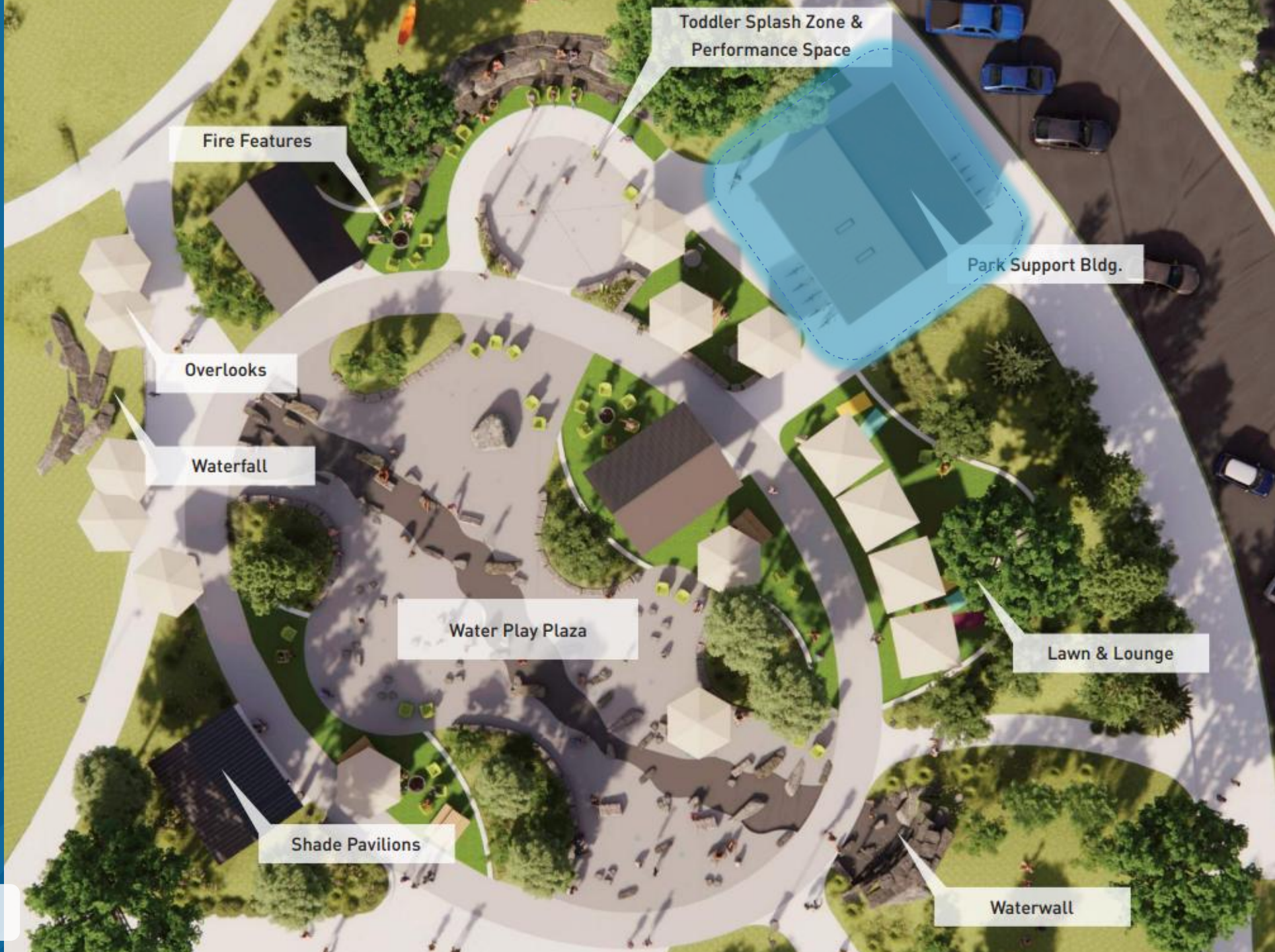


Recommendation to City Council - approval of a contract for Construction Management Services

Support Council authorization to receive quotes for Mass Grading of the site for Fall of 2025







Fire Features

Toddler Splash Zone & Performance Space

Park Support Bldg.

Overlooks

Waterfall

Water Play Plaza

Lawn & Lounge

Shade Pavilions

Waterwall

ENTRY FROM STREET CORNER



THE WATER PLAZA DESIGN



WATERPLAY TODDLER ZONE DESIGN







LAWN & LOUNGE





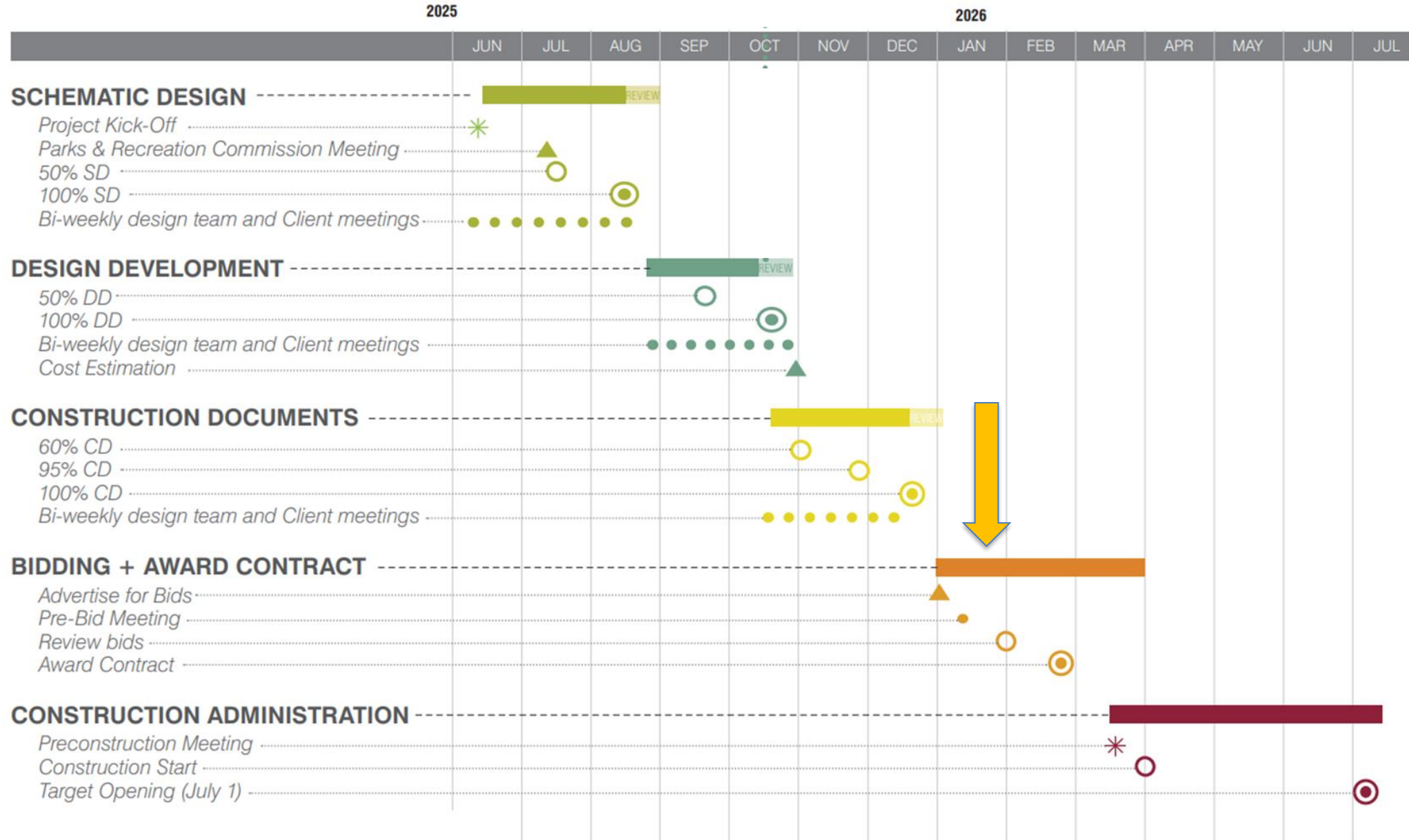


WATERFRONT

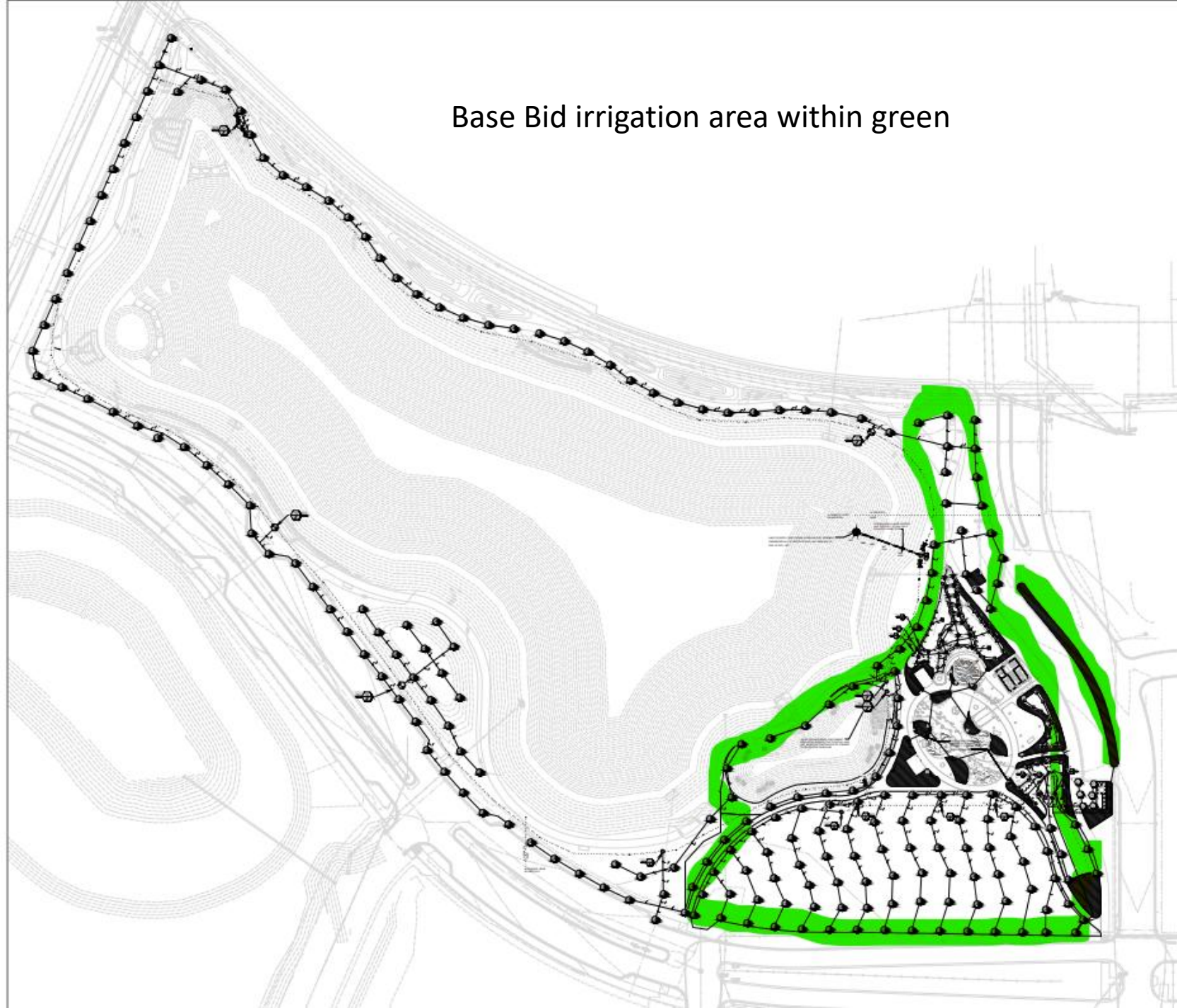


SCHEDULE

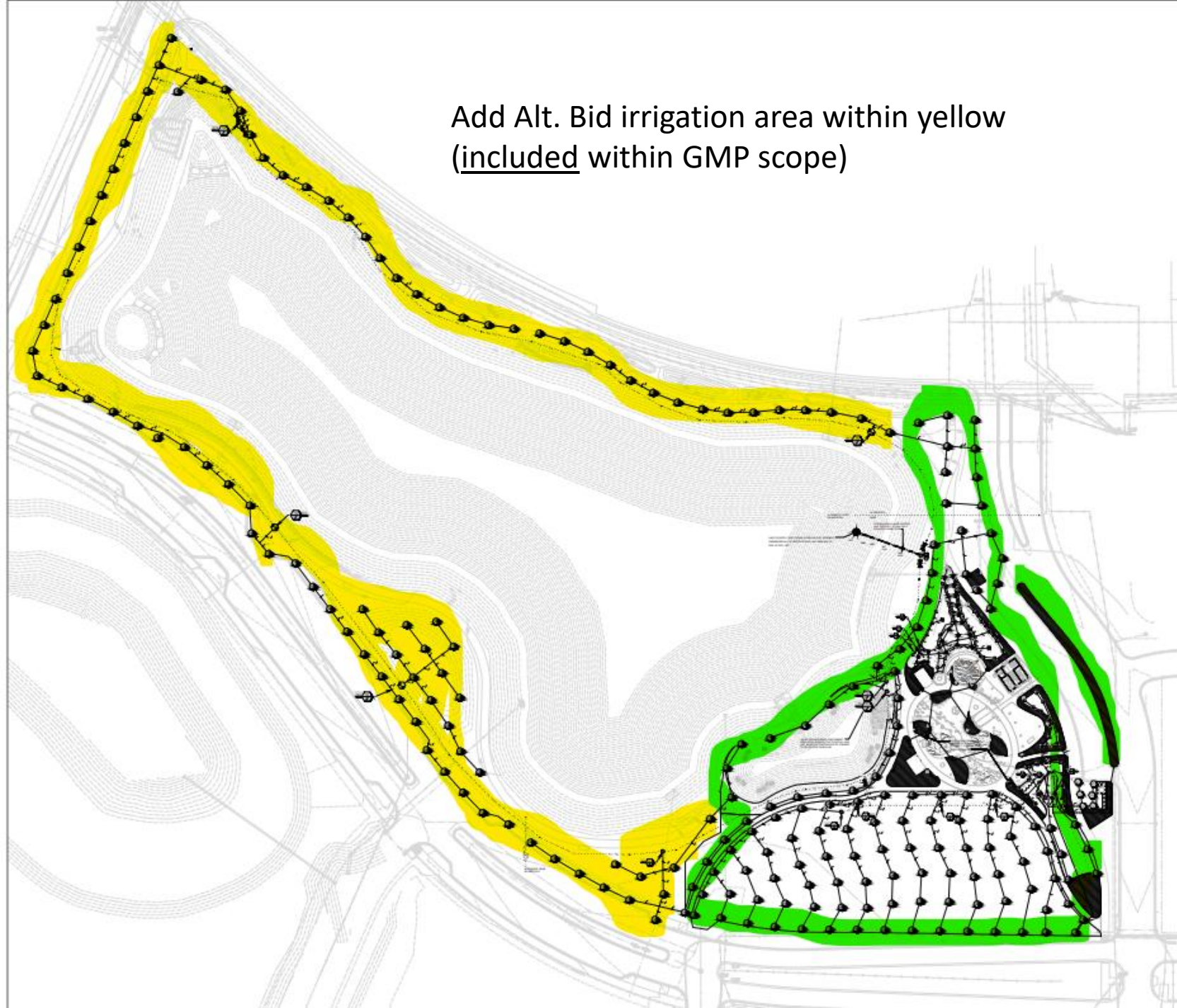
WE ARE HERE



Base Bid irrigation area within green



Add Alt. Bid irrigation area within yellow
(included within GMP scope)



Add Alt. Bid additional lighting in blue
(not included within GMP scope)

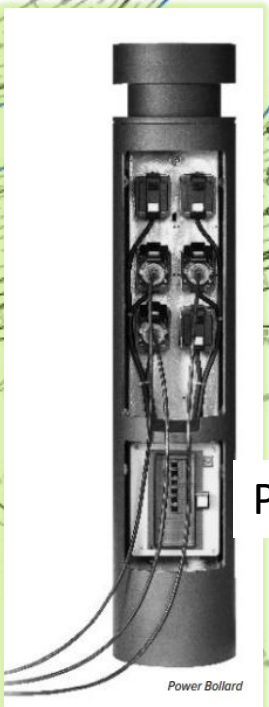




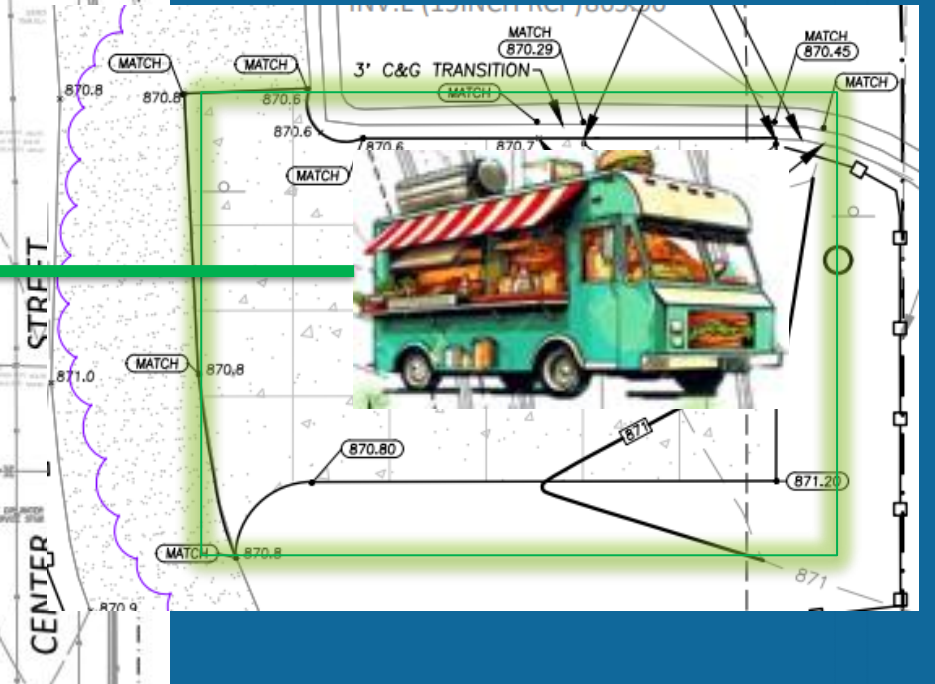
Dumpster enclosure + maint. vehicle parking pad

POND
NWL = 861.0
100-YR HWL = 866.0

PROPOSED
BUILDING
FVE - 802.21



Power bollard for food truck [interior detail]



STREET
CENTER

The Waterfront Waterplay



ID	Task Name	Duration	Start	Finish	Predecessors	Res. Name	Baseline Start	Timeline																	
								Half 1, 2026							Half 2, 2026							Half 1, 2027			
								J	F	M	A	M	J	J	A	S	O	N	D	J	F	M	A	M	J
1	THE WATERFRONT WATERPLAY						NA																		
2	Romtec Building						NA																		
3	Romtec Footing Excavation	3 days	Mon 3/2/26	Wed 3/4/26			NA	0% Romtec Footing Excavation																	
4	Romtec Footings and Foundations	10 days	Thu 3/5/26	Wed 3/18/26	3		NA	0% Romtec Footings and Foundations																	
5	Romtec Water and Sewer Line	10 days	Thu 3/5/26	Wed 3/18/26			NA	0% Romtec Water and Sewer Line																	
6	Romtec - Backfill Foundations	2 days	Thu 3/19/26	Fri 3/20/26	5		NA	0% Romtec - Backfill Foundations																	
7	Romtec Underground Plumbing	3 days	Mon 3/23/26	Wed 3/25/26			NA	0% Romtec Underground Plumbing																	
8	Romtec Masonry Walls and MEP RI	20 days	Thu 3/26/26	Wed 4/22/26			NA	0% Romtec Masonry Walls and MEP RI																	
9	Romtec Roof	10 days	Thu 4/23/26	Wed 5/6/26	8		NA	0% Romtec Roof																	
10	Romtec Interior Slab	2 days	Thu 5/7/26	Fri 5/8/26	9		NA	0% Romtec Interior Slab																	
11	Romtec Interior Finishes	15 days	Mon 5/11/26	Fri 5/29/26			NA	0% Romtec Interior Finishes																	
12	Romtec Exterior Finishes	15 days	Mon 5/11/26	Fri 5/29/26			NA	0% Romtec Exterior Finishes																	
13	Romtec MEP Finishes	5 days	Tue 6/2/26	Mon 6/8/26			NA	0% Romtec MEP Finishes																	
14	Romtec Partitions and Accessories	5 days	Tue 6/9/26	Mon 6/15/26	13		NA	0% Romtec Partitions and Accessories																	
15	Romtec Final Cleaning	2 days	Thu 6/25/26	Fri 6/26/26			NA	0% Romtec Final Cleaning																	
16	Splash Pad Piping and Electrical	62 days	Mon 4/6/26	Tue 6/30/26			NA	0% Splash Pad Piping and Electrical																	
17	Splash Pad R/I Piping/Electrical	15 days	Mon 4/6/26	Fri 4/24/26			NA	0% Splash Pad R/I Piping/Electrical																	
18	Splash Pad Work in Romtec	10 days	Fri 5/15/26	Thu 5/28/26			NA	0% Splash Pad Work in Romtec																	
19	Splash Pad Devicing/Testing/Programm	15 days	Wed 6/10/26	Tue 6/30/26			NA	0% Splash Pad Devicing/Testing/Programming																	
20	Earthwork	77 days	Mon 3/2/26	Tue 6/16/26			NA	0% Earthwork																	
21	Romtec Footing Excavation	3 days	Mon 3/2/26	Wed 3/4/26			NA	0% Romtec Footing Excavation																	
22	Romtec Foundation Backfill	2 days	Thu 3/19/26	Fri 3/20/26			NA	0% Romtec Foundation Backfill																	
23	Place Gravel Base	5 days	Fri 5/1/26	Thu 5/7/26	17		NA	0% Place Gravel Base																	
24	Place Stones - Splashpad Area	10 days	Fri 5/8/26	Thu 5/21/26	23		NA	0% Place Stones - Splashpad Area																	
25	Area Drain R/I	2 days	Fri 5/15/26	Mon 5/18/26			NA	0% Area Drain R/I																	
26	Place Topsoil in Splashpad Islands	5 days	Mon 5/11/26	Fri 5/15/26			NA	0% Place Topsoil in Splashpad Islands																	
27	Grading Confirmations - Splashpad Area	3 days	Fri 5/22/26	Tue 5/26/26	24		NA	0% Grading Confirmations - Splashpad Area																	
28	Place Stones outside of Splashpad Area	10 days	Wed 5/27/26	Tue 6/9/26	27		NA	0% Place Stones outside of Splashpad Area																	
29	Place Topsoil outside of Splashpad Area	5 days	Wed 6/10/26	Tue 6/16/26	28		NA	0% Place Topsoil outside of Splashpad Area																	
30	Site Concrete	28 days	Fri 5/15/26	Tue 6/23/26			NA	0% Site Concrete																	
31	Splash Pad Concrete	15 days	Wed 5/27/26	Tue 6/16/26	27		NA	0% Splash Pad Concrete																	
32	Site Footings	5 days	Fri 5/15/26	Thu 5/21/26			NA	0% Site Footings																	
33	Other Site Concrete	5 days	Wed 6/17/26	Tue 6/23/26	31		NA	0% Other Site Concrete																	
34	Fire Pit R/I	3 days	Wed 4/15/26	Fri 4/17/26			NA	0% Fire Pit R/I																	
35	Cantenary Light Posts and Hammock Posts	3 days	Mon 4/20/26	Wed 4/22/26	34		NA	0% Cantenary Light Posts and Hammock Posts																	
36	Pavillion Install (3)	10 days	Fri 5/22/26	Thu 6/4/26	32		NA	0% Pavillion Install (3)																	
37	Site Amenity Install	15 days	Thu 6/11/26	Wed 7/1/26			NA	0% Site Amenity Install																	
38	Site Lighting R/I and Footings	10 days	Wed 4/15/26	Tue 4/28/26			NA	0% Site Lighting R/I and Footings																	
39	Trash Enclosure Install	5 days	Thu 5/21/26	Wed 5/27/26			NA	0% Trash Enclosure Install																	
40	Landscaping	25 days	Thu 5/28/26	Wed 7/1/26			NA	0% Landscaping																	
41	Project Completion	1 day	Wed 7/1/26	Wed 7/1/26			NA	0% Project Completion																	





END OF UPDATES – DISCUSSION:

