



**Proposal for**  
**2026 Geotechnical and**  
**Construction Testing Services**  
**for the City of Ramsey, Minnesota**

**Date:**  
February 16, 2026

**Prepared for:**  
City of Ramsey  
7550 Sunwood Drive NW  
Ramsey, Minnesota 55303



**AET Contacts:**  
Nicholas Collette  
Project Manager II  
[ncollette@teamAET.com](mailto:ncollette@teamAET.com)  
Direct: (651) 470-4110

**American Engineering Testing**  
550 Cleveland Avenue North  
St. Paul, MN 55114-1804  
teamAET.com • 800.972.6364

Geotechnical • Materials  
Forensic • Environmental  
Building Sciences  
Petrography/Chemistry

February 16, 2026



Attn: Joe Feriancek  
Assistant City Engineer  
City of Ramsey  
7550 Sunwood Drive NW  
Ramsey, Minnesota 55303  
JFeriancek@cityoframsey.com

Subject: RFP 2026 Geotechnical and Construction Testing Services

Dear Mr. Feriancek:

American Engineering Testing, Inc. (AET) is pleased to submit this proposal to the City of Ramsey (“the City”), in response to your RFP (issued 1/14/2026), for geotechnical and construction testing services. We trust this submittal and our past performance on similar City projects, including roadway improvements, utility testing, and water treatment plant construction, will demonstrate our qualifications to continue serving the City of Ramsey.

We have assembled a highly versatile team, based out of our St Paul and Albertville offices, to meet your anticipated needs. We are committed to providing timely responses, flexible staff, and having staff available when needed. Mr. Nicholas Collette, and Mr. Robert Olson, PE, will act as our primary project managers and will serve as the main AET contacts for the City of Ramsey. Mr. Olson will also act as the principal-in-charge.

We hope to continue providing services to the City and we welcome the opportunity to further discuss our approach to future projects with you.

Sincerely,  
American Engineering Testing, Inc.

A handwritten signature in black ink, appearing to read "N. Collette", with a long horizontal flourish extending to the right.

Nicholas Collette  
Project Manager II

A handwritten signature in black ink, appearing to read "Robert J. Olson", with a long horizontal flourish extending to the right.

Robert Olson, PE (MN, ND, SD, WI, MT)  
Principal Engineer



# CONTENTS

FIRM DETAILS .....	1
FIRM PROFILE .....	1
<b>History</b> .....	1
<b>Capabilities</b> .....	1
<b>Safety and Quality</b> .....	1
<b>Firm Experience</b> .....	1
<b>Similar Project Experience</b> .....	2
<b>Client References</b> .....	4
UNDERSTANDING OF THE SCOPE OF WORK.....	5
WORK PLAN AND SAMPLE PROJECT ESTIMATE .....	8
<b>Geotechnical Exploration</b> .....	8
<b>Estimated Geotechnical Fees</b> .....	8
<b>Construction Materials Testing</b> .....	9
KEY PERSONNEL .....	9
STATEMENT OF FEES.....	12
TERMS AND CONDITIONS.....	12
APPENDIX	
Sample Project Estimate	
Professional Staff Resumes	
Table 1 – 2026 Construction Materials Testing Unit Rates	
Table 2 – 2026 Geotechnical Service Rates	
Construction Services Agreement -Terms and Conditions	



## FIRM DETAILS

American Engineering Testing, Inc. (AET)  
550 Cleveland Avenue North, St Paul, MN 55114  
**Reception:** (800) 972-6364 **Fax:** (651) 659-1379

**Primary Contact:** Nicholas Collette  
**Email:** [ncollette@teamAET.com](mailto:ncollette@teamAET.com) **Phone:** 651-470-4110

**Date of Proposal:** February 16, 2026

## FIRM PROFILE

### History

Founded in 1971, American Engineering Testing, Inc. (AET) is a 100% employee-owned corporation. Headquartered in Saint Paul, Minnesota, AET employs over 500 people and serves clients from 20 offices located across the Upper Midwest and Wyoming, including 8 offices in Minnesota. Our St Paul office employs over 300 people, including more than 30 Professional Engineers and Geologists.

### Capabilities

AET provides critical investigations, testing, inspection, analysis, and design that help keep construction projects on track. AET services include geotechnical engineering; construction materials engineering and testing; nondestructive testing; petrography/chemistry services; building envelope assessments; and environmental consulting. We have extensive experience providing these services to counties and cities across Minnesota, including the City of Ramsey.

### Safety and Quality

Safety and quality are fundamental to our services and key to the success of our projects. AET employees work as a team towards eliminating work-related injuries and accidents. Our Occupational Health and Safety Management System and Safe Work Practices manual require extensive employee safety training across all job descriptions. Our self-imposed, in-house Quality Management System provides a rigorous framework, guiding staff during technical work and requiring the use of standard methods for sampling, calibrations, observations, testing, documentation, and reporting.

### Firm Experience

Our 50+ years of experience includes both public sector and commercial projects including work on transportation, infrastructure, and vertical construction projects of all sizes. This has included a range of services on some of the most complex projects around -- stadiums, high rises, large urban redevelopment projects, and industrial facilities. AET has also been instrumental in providing geotechnical and pavement engineering and construction materials testing on most of the major transportation projects in Minnesota and on transit projects across the Twin Cities.



## Similar Project Experience

Some relevant geotechnical and construction testing project experience with the City of Ramsey and nearby municipalities is described below.

### *City of Ramsey*

#### **Project: Ramsey Water Treatment Plant – 2023-2025**

**Details:** AET provided geotechnical services, groundwater investigation, materials testing and special inspections for the construction of a new water treatment plant in the City of Ramsey. AET's scope of work included excavation observations, soils testing, rebar observations, concrete testing, and structural steel and welding inspections. Throughout the project AET has provided experienced technicians to perform these observations and testing.

**Contact: Abigail Bowman - AE2S, Bruce Westby, Aaron Madsen – City of Ramsey**

#### **Project: Alpine Drive Reconstruction – 2025**

**Details:** AET provided materials testing for the reconstruction of Alpine Drive. AET's technicians provided soils testing, concrete testing, and bituminous testing throughout the project in accordance with MnDOT State-Aid requirements. AET also assisted with State-Aid documentation throughout the project.

**Contact: Bruce Westby, Aaron Madsen – City of Ramsey**

#### **Project: Riverstone South – 2023-2025**

**Details:** AET provided materials testing for the roadway and utility construction for a new 200+ unit housing development. AET's technicians provided soils testing for grading work and utility installations and concrete testing throughout the project.

**Contact: Bruce Westby, Aaron Madsen – City of Ramsey**

### *City of Andover*

#### **Project: Nightingale Roundabouts – 2025**

**Details:** AET Provided construction materials testing for the construction of two roundabouts near Crosstown Boulevard and Nightingale Street in Andover, MN. Construction took place in the 2025 construction season and included soils, concrete, and bituminous testing. AET also provided state aid documentation for the project.

**Contact: Jason Law, Jake Knutson – City of Andover**

#### **Project: Fields of Winslow Cove – 2022-2025**

**Details:** AET provided construction materials testing for the roadway and utility construction of a new housing development in Andover. Construction took place from 2022-2025 and included four phases of development work. AET's services included soil density testing for grading work, deep utility construction, concrete testing, and bituminous testing.

**Contact: Jason Law, Jake Knutson – City of Andover**



**Project: Andover Crossing – 2022**

**Details:** AET provided construction materials testing for a new mixed used development that included soils testing for grading work and utility installation, concrete testing for curb and gutter and sidewalk, and bituminous testing.

**Contact: Jason Law, Jake Knutson – City of Andover**

*City of Albertville*

**Project: Main Avenue Reconstruction – 2025-Present**

**Details:** AET provided geotechnical services and is providing construction materials testing for the reconstruction of Main Avenue in Albertville, MN. This project includes State-Aid funding and AET is assisting with documentation and materials summary reports throughout the project for state aid requirements. Construction is anticipated to be completed in 2026.

**Contact: Adam Nafstad – City of Albertville**

*City of Minnetonka*

**Project: Mill and Overlay, 2025**

**Details:** AET provided geotechnical services and construction testing for nine new bridges over trails. This included soil borings and preparation of a geotechnical report and recommendations. We provided the Quality Assurance (QA) Testing (using MnDOT certified testers) that included compaction testing, MnDOT DCP testing, sieve analyses, concrete testing, and bituminous testing.

**Contact: Chris Smi and Mitch Hatcher - City of Minnetonka**

**Project: SAP 142-152-010 Wayzata Boulevard Improvements, 2024**

**Details:** AET provided geotechnical services and construction testing for nine new bridges over trails. This included soil borings and preparation of a geotechnical report and recommendations. We provided the Quality Assurance (QA) Testing (using MnDOT certified testers) that included compaction testing, MnDOT DCP testing, sieve analyses, concrete testing, and bituminous testing.

**Contact: AJ Soland and Mitch Hatcher - City of Minnetonka**

**Project: Opus Bridges, Phases 1, 2, and 3, 2020-2023**

**Details:** AET provided geotechnical services and construction testing for ten new bridges over trails. This included soil borings and preparation of a geotechnical report recommending Geosynthetic Reinforced Soil (GRS) bridge abutments. We also provided the Quality Assurance (QA) Testing (using MnDOT certified testers) that included compaction testing, MnDOT DCP testing, sieve analyses, direct shear testing, concrete testing, and bituminous testing.

**Contact: Chris Long and Chris Smith - City of Minnetonka**

**Project: Opus and Burch Lift Stations and Opus Secondary Forcemain, 2021-2023**

**Details:** AET provided geotechnical services for lift station rehabilitation at the Burch and Opus sites. Borings and geotechnical services were also performed for the new secondary forcemain (to be directionally drilled) from the Opus Lift Station site across a wetland to a new manhole on the west side of the wetland. These projects are in wetland/swamp deposit areas. The reports provided recommendations for support of lift station features, construction considerations with regard high



groundwater and organic soils and directional drilling. We also provided the construction materials testing and special inspections that included excavation observations/recommendations, helical pile observations, reinforcing steel observations, and concrete testing.

**Contact: Mike Kuno - City of Minnetonka**

## Client References

As requested, we have included several municipal client references for our team members, including a description of services we have provided to them. AET has earned an excellent reputation working with Metro area city and county staff. A few references are included below with relevant AET team members noted for each contact. (We are pleased to provide additional references, upon request).

### City of Andover

AET has worked with City staff on a variety of city improvement projects providing Geotechnical engineering and Construction Materials Testing.

#### City Contacts:

Jason Law, Assistant City Engineer – 763-767-5130; [j.law@andovermn.gov](mailto:j.law@andovermn.gov)

**AET Staff:** Nicholas Collette

### City of Minneapolis

AET has worked on many projects with the City, providing Geotechnical, Materials Testing, and Environmental services.

#### City Contacts:

Adam Hayow – 612-673-2172; [adam.hayow@minneapolismn.gov](mailto:adam.hayow@minneapolismn.gov)

Petru Vizoli -- 612-673-2368; [petru.vizoli@minneapolismn.gov](mailto:petru.vizoli@minneapolismn.gov)

**AET Staff:** Justin Staker

### City of Greenfield

AET has worked with City staff on a variety of city improvement projects providing Geotechnical engineering and Construction Materials Testing.

#### City Contacts:

Matthew Kind (Hakanson Anderson), 763-427-5860; [matthewk@haa-inc.com](mailto:matthewk@haa-inc.com)

Ron Wagner (Hakanson Anderson), 763-852-0478; [ronw@haa-inc.com](mailto:ronw@haa-inc.com)

**AET Staff:** Nicholas Collette, Rob Olson

### City of Minnetonka

AET has worked on many projects with the City, providing Geotechnical and Materials Testing services.

#### City Contact:

Phil Olson, City Engineer -- 952-939-8239; [polson@minnetonkamn.gov](mailto:polson@minnetonkamn.gov)

**AET Staff:** Rob Olson, Justin Staker, Megan Hoppe



### **Washington County**

AET has worked on many projects with the County, providing Geotechnical, Materials Testing, and Environmental services.

#### **County Contacts**

Andrew Giesen -- 651-430-4336; [andrew.giesen@co.washington.mn.us](mailto:andrew.giesen@co.washington.mn.us)

Erin Blaylock – 651-430-4384; [erin.blaylock@co.washington.mn.us](mailto:erin.blaylock@co.washington.mn.us)

Allan Brandt – 651-430-4348; [allan.brandt@county.washington.mn.us](mailto:allan.brandt@county.washington.mn.us)

**AET Staff:** Thomas Evans, Megan Hoppe, Justin Staker, Ryan Schaefer

## **UNDERSTANDING OF THE SCOPE OF WORK**

We understand that the scope of work includes completing geotechnical and construction testing services, as directed, on a variety of municipal infrastructure projects within the City of Ramsey, on an as needed basis. Our understanding of the scope of work, and ability to provide responsive and flexible scheduling, will allow us, and our main point of contact, to serve the City of Ramsey and respond to client needs and unforeseen circumstances within 1 hour.

AET has over 50 years of experience providing geotechnical and testing services to municipalities and counties across Minnesota. Our Geotechnical Team offers complete geotechnical services ranging from drilling, in-situ testing, and laboratory testing to engineering design and consultation. Our Construction Services Team provides field and lab construction materials testing, Special Inspections, and bituminous and pavement testing. Our Saint Paul materials testing laboratories are AASHTO accredited.

### ***Geotechnical Services***

AET conducts soil borings, with multiple drill rigs, on a daily basis. Our drillers have many years of experience drilling in a wide range of soil types, soil stiffness/density conditions, and groundwater conditions. Drilling methods include hollow and solid stem auger drilling, mud-rotary drilling (required in granular soils below the water table), and specialized casing advancements when overhead space limits conventional practice. To match the correct rig with access needs, we use truck vehicles of varying size, all-terrain vehicles (both rubber-tired and tracked), and several sizes of portable rigs. AET also performs piezocone penetration testing and seismic piezocone testing.

AET routinely incorporates hydrologic/hydrogeologic considerations into our environmental and geotechnical programs. Having environmental well contractors, licensed by the Minnesota Department of Health (MDH), on staff provides us with the expertise and flexibility to install monitoring wells or piezometers, rather than subcontracting for well installation. Our team of drillers have many years of experience installing monitoring wells in varied soil, bedrock, and groundwater environments.

Our professional engineering staff prepares Geotechnical Exploration Reports based upon our soil borings and laboratory testing of samples. These reports present our geotechnical recommendations for a large variety of projects including buildings, roadways, bridges, and retaining walls. The reports are prepared by experienced engineers with principal level review by a Professional Engineer licensed in the State of Minnesota.



### ***Construction Materials Testing***

AET offers comprehensive engineering observation, special inspections, and material testing services to monitor quality control / quality assurance on a wide variety of construction projects. We have provided these services for more than 20,000 projects, including numerous underground utility installation and transportation related projects.

AET has ACI and MnDOT certified technicians to perform construction testing and inspection. We perform the following services:

- Foundation installation observations for piling, footings, helical piers, drilled piers, and rammed aggregate piers
- Observe exposed soils in excavation bottoms and document suitability for construction
- Perform shallow hand auger borings and hand cone penetrometer probes as needed to evaluate soil stability and bearing capacity
- Conduct laboratory testing of soils for sieve analysis and proctor testing
- Soil density testing using the nuclear density gauge or sand cone method
- Subgrade observations and test rolls to observe stability, deflection, and rutting and provide recommendations for corrective action
- Concrete testing with field sampling including documentation of correct mix delivery, slump, temperature, air entrainment and casting compressive strength test cylinders
- Other testing services as required

### ***Bituminous and Pavement Testing***

AET provides bituminous testing and mix design services. Members of our staff, across our Midwest regional offices, are certified in Minnesota, Wisconsin, North Dakota, and South Dakota. Our laboratory is AASHTO R18 accredited and MnDOT & WisDOT Qualified.

AET's pavement and infrastructure group specializes in the testing, design, construction, maintenance, and rehabilitation of roads, parking lots and other transportation-related structures. Our typical roadway, driveway, and parking facility services include:

- Research program coordination
- Create/modify specifications and best practices manuals
- Develop/execute research/new-product implementation plans
- Falling-Weight Deflectometer (FWD) testing
- Maintenance activities/schedules
- Pavement design and optimization (including full-depth reclamation and cold-in-place recycling)
- Pavement management (including evaluation/condition surveys)
- QA/QC Management
- Pavement rehabilitation alternatives, including cold in place recycled asphalt
- Roadway Inspection and Testing
- Pavement Design recommendations with consideration to city standards.



### ***QA/QC and Laboratory Accreditation***

AET has an operating Quality Management System (QMS) that guides our staff during technical work. The QMS requires use of standard methods for sampling, observations, testing, documentation, and reporting. All personnel, procedures, equipment, and materials used in the course of our work comply with the QMS, which is designed to comply with the requirements of ISO/IEC Standard 17025 General Requirements for the Competence of Testing and Calibration Laboratories.

#### **AET's QAP Standards**

AET's QAP provides compliance with the requirements of these ASTM standards:

- **ASTM C1077** Standard Practice for Laboratories Testing Concrete and Concrete Aggregates for use in Construction and Criteria for Laboratory Evaluation
- **ASTM C1093** Accreditation of Testing Agencies for Unit Masonry
- **ASTM D3666** Minimum Requirements for Agencies Testing/Inspecting Road & Paving Materials
- **ASTM D3740** Minimum Requirements for Agencies Engaged in the Testing / Inspection of Soils and Rock as used in Engineering Design and Construction
- **ASTM E329** Standard Specification for Agencies Engaged in the Testing / Inspection of Materials used in Construction
- **ASTM E543** Standard Practice for Agencies Performing Nondestructive Testing

#### **Laboratory Accreditation**

AET's locations in Saint Paul, Rochester, Duluth, Wausau, and Sioux Falls are accredited by the AASHTO Materials Reference Laboratory (AMRL) in geotechnical and construction materials engineering and testing. Assessments are conducted according to the AASHTO R18 standard: Establishing and Implementing a Quality System for Construction Materials Testing Laboratories. Our QAP meets the requirements of the US Army Corps of Engineers (USACE), and our Saint Paul, Duluth, Rapid City, and Sioux Falls locations carry a laboratory validation designation by the USACE.

AET's Environmental Field group in Saint Paul is accredited by the American Association for Laboratory Accreditation (A2LA) signifying that our staff and our quality system have been evaluated by a third-party assessor. Copies of accredited test methods are available upon request.

#### **Compliance**

AET conducts annual internal audits to assess the effectiveness of implementation of our Quality Assurance Program and measure compliance with the 17025 standard and provides a working standard for continual improvement.

Personnel are trained in the Technical Standard Operating Procedures (T-SOPs) performed, are certified either externally by Mn/DOT, Wis/DOT, SD/DOT, NICET, ACI, ICC or other recognized certifying authority, or internally by AET. AET participates in relevant CCRL (Cement and Concrete Reference Laboratory) and AMRL (AASHTO Materials Reference Laboratory) proficiency test programs.

Test and inspection equipment meets industry and procedural requirements, is maintained in proper working order, and is in current calibration with traceability to national standards such as those maintained by the National Institute of Standards and Technology (NIST).



## WORK PLAN AND SAMPLE PROJECT ESTIMATE

Outlined below is our sample work plan and estimate for providing geotechnical and materials testing services for a 1250' State Aid bituminous roadway. This work plan includes geotechnical exploration and review and construction materials testing for the proposed project.

### Geotechnical Exploration

AET's geotechnical team and Project Manager will work with the City to prepare a detailed cost estimate and approach for a geotechnical evaluation of the site to determine subsurface soil conditions. Upon approval of our cost estimate AET will arrange and coordinate utility locates and any necessary traffic control needed to perform the work and the completion of drilling will take place within four to six weeks. Once utility locates have been marked AET staff will mark our proposed soil boring locations in the field in preparation for drilling. Upon completion of drilling AET staff will transport the recovered samples and field logs to our Albertville laboratory for classification and testing.

Our proposed scope of work for this project would include:

- Arranging clearance of underground public utilities through the Gopher State One-Call System.
- Perform 6 standard penetration test borings (ASTM: D1586) to a depth of 14.5 feet each along the proposed roadway, with a soil boring exhibit provided.
- Seal the boreholes per Minnesota Department of Health requirements.

We will drill the boring using hollow stem augers or by rotary mud drilling, and sampling by the split-barrel method (ASTM D1586). Our crew will keep a field log noting the methods of drilling and sampling, the Standard Penetration Values (N-values, "blows per foot"), preliminary soil classification, and observed groundwater levels. We will collect samples at 2.5-foot intervals to the termination depths. Representative portions of recovered samples will be sealed in jars to prevent moisture loss and submitted to our laboratory for review, testing and final classification.

One to two weeks after the completion of drilling AET will provide draft boring logs and laboratory test results for the City's review. We will prepare a report in which we will present the results of our subsurface exploration and laboratory testing. The report will include logs of the soil borings, the laboratory test results, a review of the engineering properties of the on-site soils and our geotechnical engineering opinions and recommendations regarding the following. After the City's review and approval AET will finalize the geotechnical exploration report and provide it to the City for their records and distribution.

### Estimated Geotechnical Fees

For the scope of services described above, our charges would be as follows:

1. Boring Locations, Utility Clearance	\$ 1,000.00
2. Drilling and Sampling - 6 borings	\$ 3,500.00
3. Laboratory classification and testing	\$ 1,000.00
4. Geotechnical Analysis & Reports	<u>\$ 1,600.00</u>
<b>TOTAL ESTIMATE</b>	<b>\$ 7,100.00</b>



## **Construction Materials Testing**

During construction AET will provide experienced MnDOT certified technicians for construction materials testing. Our technicians will be scheduled for density testing, concrete testing, and bituminous testing on an on-call basis to perform the work. AET will provide a field engineer to perform any Excavation Observations if unsuitable soils are encountered during grading of the roadway and will provide a technician to perform soil density testing of the backfill materials used during the sanitary sewer, watermain and storm sewer installation. Our technician will also obtain soil samples as needed for laboratory proctor and density testing. Upon completion of the utility installation our technician will provide soil density testing for the subgrade of the roadway as well as DCP testing for the aggregate base section. If any test results are out of specification City staff will be notified.

During the placement of concrete for curb and gutter our technician will verify the proper mix design upon delivery and perform plastic concrete testing for the mix being placed. Our technician will perform temperature, slump, and air entrainment testing of the concrete and verify that all test results meet City and project specifications. If any test results are out of specification City staff will be notified immediately on site. A total of five cylinders will be cast with each test performed (or every 100 cubic yards placed). One cylinder will be tested for compressive strength at 7 days, three cylinders will be tested at 28 days, and one cylinder will be kept as a hold. If the 28 day average compressive strength does not meet specifications then the hold cylinder will be tested at 56 days.

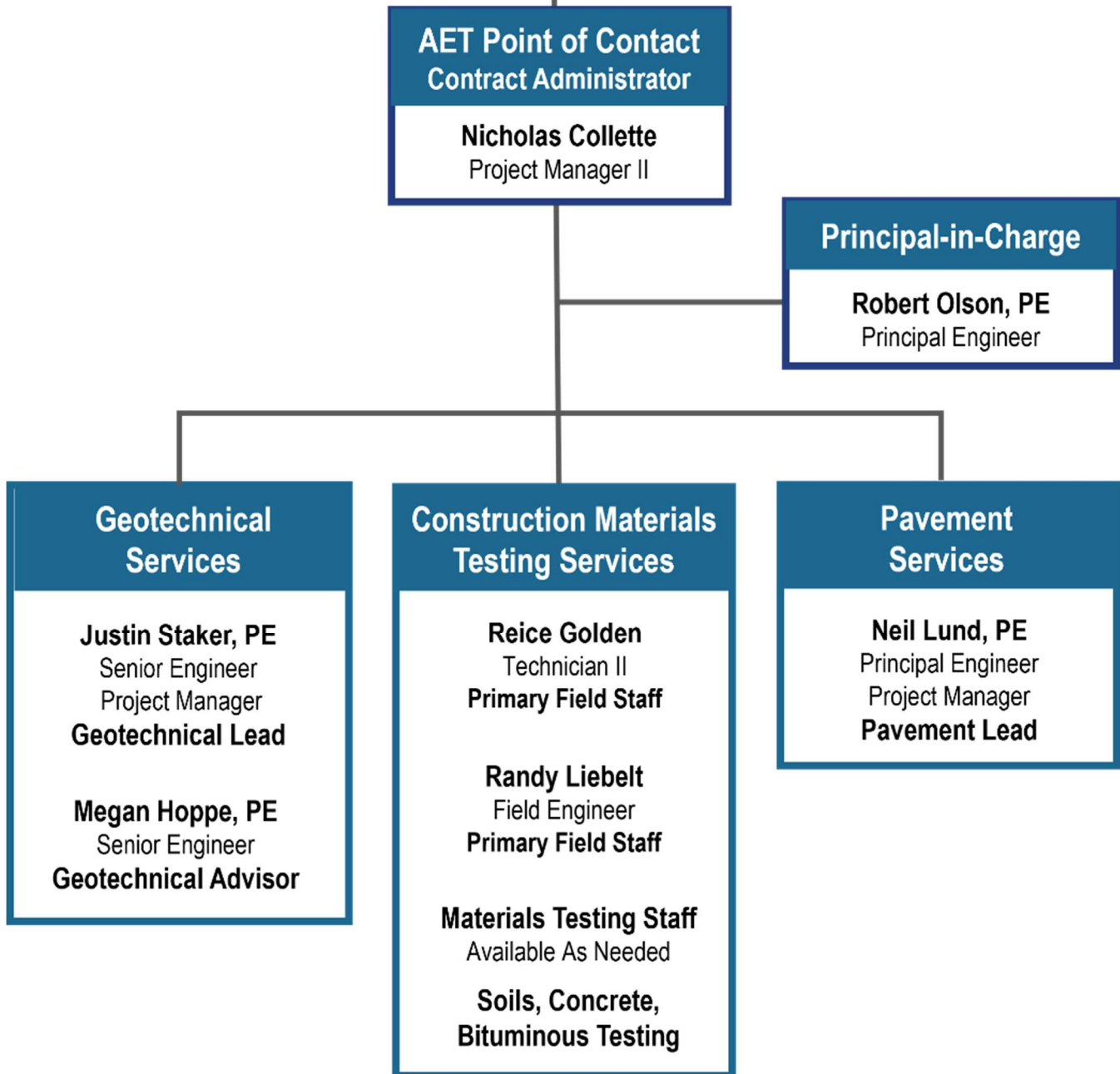
During bituminous paving operations our technician will be available on site to observe rolling procedures and establish a rolling pattern with the paving crew. Our Project Manager will coordinate with City staff and the bituminous plant to obtain laboratory split samples of the bituminous mix being placed. Upon completion of paving our Project Manager will prepare the MnDOT coring log for City staff to review, once approved we will mark the cores on the roadway. After coring is completed AET staff will transport the bituminous cores to our St. Paul laboratory for testing and will provide the City with the testing results once completed.

All test reports will be published via Construction Hive by the Project Manager and will be distributed to City inspection and administration staff, as requested.

Our estimated fee schedule for construction materials testing can be found in the Appendix.

## **KEY PERSONNEL**

AET is fully staffed and equipped to complete the scope of work for City of Ramsey projects and our lead and support personnel hold the certifications and licenses required to perform their work. Our proposed team includes staff from our Albertville office with support from the St Paul Office, as needed. Proposed team titles and roles are shown in the organizational chart below and the qualifications and experience of key staff in Geotechnical and Environmental services are summarized in bios on the following pages. More detailed resumes are included in the Appendix.





**Nicholas Collette, Project Manager II / Project Manager and Main Point of Contact**

“Nick” is a project manager with 10 years of experience in geotechnical engineering, construction materials observations and testing, and special inspections. He is primarily responsible for materials testing and special inspections of municipal transportation and vertical projects. Nick has provided material testing and inspection services to both private and public sector clients. His experience includes both quality control and quality assurance observations and testing of soil, aggregate, concrete, and masonry during construction. Nick will serve as a client manager for the City of Ramsey Center. He is committed to being available to the City of Ramsey for the duration of the contract.

**Robert Olson, PE (MN), Principal Engineer / Principal Project Manager**

“Rob” has over 20 years of experience, focusing on residential and commercial development. He provides project management of geotechnical and special inspection and materials testing projects. His experience includes due diligence, entitlements, construction plans, and construction administration for residential development. Rob also has many years of experience in the design of site, utility, grading, erosion control, and stormwater treatment plans for commercial development. He is available for the duration of the contract and will serve as the senior client manager for the City of Ramsey.

**Megan Hoppe, PE (MN) -- Senior Geotechnical Engineer / Project Manager**

Megan has over 25 years of experience providing subsurface exploration programs, soil, and pavement testing for geotechnical and pavement projects for private, city, and county clients, as well as MnDOT. Her work includes providing analysis, review, and recommendations for building, retaining wall, and bridge support; embankment construction and widening; pavement rehabilitation and design; and slope stability. Megan will provide guidance and Technical Review of deliverables.

**Justin Staker, PE (MN) – Senior Engineer / Geotechnical Project Manager**

Justin has 12 years of experience in construction materials and geotechnical testing and observations and pavement engineering. He has experience with MnDOT project specifications, QA/QC requirements, along with project reporting and documentation. His recent focus has been in construction materials testing and observations for state and state aid transportation projects in the MnDOT Metro District, as well as preparing proposals and reports for geotechnical projects. He is available for the duration of the contract for the City of Ramsey.

**Neil Lund, PE (MN), Principal Pavement Engineer / Project Manager**

Neil Lund is a registered professional engineer in Minnesota and eight other states and has over 20 years of experience in pavement and geotechnical engineering projects. His work has ranged from municipal street projects, geotechnical and non-destructive testing for county highways, design-build of major trunk highways, and consultation with national retailers on their pavement networks.

**Materials Testing Staff -- Soils, Concrete, and Bituminous Testing**

Our construction materials testing group maintains a staff of over 75 well-trained and experienced engineers, geologists, and field and laboratory technicians available for this contract. AET will use ACI, ICC, or MnDOT certified staff as required (and other provisional staff as needed) for the City’s construction materials testing needs.



Our primary field staff for servicing City of Ramsey projects will include:

**Reice Golden – Technician II**

Reice is a field technician with 5 years of experience working on both commercial and transportation projects providing soils testing, concrete testing, reinforcing steel observations, and bituminous testing. Reice will serve as the primary field technician for street and utility improvement project testing needs. He holds various MnDOT technical certifications that make him an asset to the project team for the City of Ramsey along with his experience servicing city and state funded projects.

**Randahl Liebelt – Field Engineer**

“Randy” is a Field Engineer with 8 years of experience working on commercial, transportation, and MnDOT projects. Randy has served as a field inspector on several large highway projects. He has experience in soils testing, concrete testing, reinforcing steel observations, and bituminous testing. He also has experience in soils observations and test roll observations and will provide these services to the city on an as needed basis.

## STATEMENT OF FEES

Our 2026 Fee Schedule for the City of Ramsey is included as an Appendix.

## TERMS AND CONDITIONS

All AET Services are provided subject to the Terms and Conditions set forth in the enclosed Construction Service Agreement—Terms and Conditions, which, upon acceptance of this proposal, are binding upon you as the Client requesting Services, and your successors, assignees, joint ventures and third-party beneficiaries. Please be advised that additional insured status is granted only upon written acceptance of the proposal.



## APPENDIX

### **Sample Project Estimate Professional Staff Resumes**

**Table 1 – 2026 Construction Materials Testing Unit Rates**

**Table 2 – 2026 Geotechnical Service Rates**

**Construction Services Agreement -Terms and Conditions**



## Materials Testing Estimate for 1250' State Aid Roadway – 2025 SALT SMC Ramsey, Minnesota

Material	Units	Quantity	Trips	Hours	Agency Testing & Frequency	# of Tests		Cost per Test (\$)	Cost (\$)	
						Minimum	Likely		Minimum	Likely
Watermain Storm Sewer Sanitary Sewer	LF	3,750	10	30	Proctor (1/soil type)	1	2	195.00	195.00	390.00
					Trenches, Specified Density Nuclear Gauge (1/500'2' fill)	8	12	44.00	352.00	528.00
					Relative Moisture (1/10,000 CY, 10 max)	6	8	60.00	360.00	480.00
Select Granular Embankment	CY	1,110	2	6	Gradation (1/40,000 CY)	1	2	170.00	170.00	340.00
					Proctor (1/soil type)	1	2	195.00	195.00	390.00
					Specified Density Nuclear Gauge (1/6,000 CY, test rolled)	1	4	46.00	46.00	184.00
					Relative Moisture (1/10,000 CY, 10 max)	4	6	60.00	240.00	360.00
Aggregate Base Class 5	CY	555	2	6	Gradation (2 per lot, 1 lot ≤ 2,000 CY)	2	4	170.00	340.00	680.00
					Road, Penetration Index DCP (1/1,500 CY, test rolled)	1	3	63.00	63.00	189.00
					Walks and Trails, DCP (1/500 feet)	3	6	63.00	189.00	378.00
					Relative Moisture (1/1,000 CY, 10 max)	1	2	60.00	60.00	120.00
Subgrade Preparation	STA	13	1	3	Proctor (1/soil type)			195.00	0.00	0.00
					Specified Density Nuclear Gauge (1/25 STA)	1	4	46.00	46.00	184.00
					Relative Moisture (1/25 STA)	1	4	60.00	60.00	240.00
Bituminous - SP WE/NW	TON	680	2	3	MnDOT Gyratory Mix Properties (1/day/mix type)	2	2	656.00	1,312.00	1,312.00
					Companion Core Density & Thickness	4	4	60.00	240.00	240.00
			2	6	Mark Core Locations - hourly rate see below					
Concrete - Sidewalk, Pedestrian Ramps, Curb & Gutter	CY	300	6	18	Plastic Concrete Testing (1 set of tests/100 CY) - Included in hourly rate see below					
					Concrete Compressive Strength, Curing, & Handling 4x8 Cylinders (includes mold) (5 cys/100 CY)	15	30	44.00	660.00	1,320.00
					Concrete sample pick up from job site	2	4	105.00	210.00	420.00
25								72		
								<b>Subtotal =</b>	<b>4,738.00</b>	<b>7,755.00</b>

**Notes:**

1. For grading and base materials, per the 2025 SALT SMC, less than 500 tons (250 CY) may be accepted by the Engineer without testing.
2. Number of "Likely" bituminous samples, cores, and trips assumes 2 days of paving. Assumes testing of all companion cores and no longitudinal density cores.
3. All Material Quantities are estimated based upon length of roadway - no plans or quantities were available at the time of our estimate.
4. We reserve the right to revise this proposal estimate when the final construction documents are completed, if required.

Time and Mileage	Unit	Rate (\$)	Minimum Quantity	Likely Quantity	Minimum Cost	Likely Cost
Trip Charge	Trip	80.00	25	30	2,000.00	2,400.00
Technician II	Hour	120.00	72	72	8,640.00	8,640.00
Engineer II, Final Project Summary Report	Hour	200.00	2	3	400.00	600.00
Engineer II, Project Management	Hour	200.00	10	12	2,000.00	2,400.00
Project Administrator	Hour	90.00	3	5	270.00	450.00
<b>Subtotal =</b>					<b>13,310.00</b>	<b>14,490.00</b>

	<b>Minimum</b>	<b>Likely</b>
Estimate prepared by: <b>Nicholas Collette</b>	<b>Total Cost Estimate = 18,048.00</b>	<b>22,245.00</b>



**Nick Collette**  
Project Manager II

### Education

BS in Civil Engineering, University of North Dakota, 2015

### Technical Certifications

MnDOT - Aggregate Production  
MnDOT - Concrete Field I  
MnDOT - Grading and Base I  
ACI Concrete Field  
Nuclear Radiation Gauge Safety and Transportation  
OSHA 10 Hour Safety

### Contact

ncollette@teamAET.com  
Office | 651-659-9001

Nick is an engineer with 10 years of experience in geotechnical engineering, construction materials observations, inspections, and testing, and special inspections, currently focusing on materials testing and special inspections of vertical projects. His experience includes both quality control and quality assurance observations and testing for both private and public sector clients.

## Relevant Project Experience

### Riverdale Drive Trunk Utility Improvements 2022

This State Aid project consisted of an extension of Riverdale Drive, including grading work, utility installation to service Riverstone South, plus concrete and bituminous placement. Nick worked with the City of Ramsey project inspection staff to perform materials testing. Nick served as Project Manager and also performed soils, concrete and bituminous testing.

### Sunwood Drive and Waco Street Reconstruction 2022

This project consisted of reconstruction/mill and overlay of concrete and bituminous pavement. Nick worked with the City of Ramsey project inspection staff to perform materials testing. Nick served as Project Manager and also performed soils, concrete and bituminous testing.

### Evanswood Street & Utility, Maple Grove, MN 2022-2023

This State Aid project is a new housing and townhome development. Nick managed the project and performed testing for utility installation, as well as concrete and bituminous placement.

### Riverstone South Development, Ramsey, MN 2022

This project consisted of new construction for a 200+ unit housing development, including utility installation, concrete, and bituminous testing. Nick served as Project Manager and performed soils, concrete and bituminous testing.

## Relevant Project Experience

### **Main Avenue Reconstruction, Albertville, MN**

**2025-Present**

AET provided geotechnical services and is providing construction materials testing for the reconstruction of Main Avenue in Albertville, MN. This project includes State-Aid funding and AET is assisting with documentation and materials summary reports throughout the project for state aid requirements. Construction is anticipated to be completed in 2026.

### **Ramsey Water Treatment Plant, Ramsey, MN**

**2023-2025**

Nick served as the project manager and also provided on-site observations for the construction of a new water treatment plant for the City of Ramsey. AET provided materials testing and special inspections for the construction of a new water treatment plant in the City of Ramsey. AET's scope of work included excavation observations, soils testing, concrete and rebar observations and testing, and structural steel and welding inspections. Throughout the project AET has provided experienced technicians to perform these observations and testing.

### **Nightingale Street Roundabouts, Andover, MN**

**2025**

Nick served as the project manager for the construction of two roundabouts near Crosstown Boulevard and Nightingale Street in Andover, MN. AET technicians and field engineers provided on site observations and materials testing. Construction took place in the 2025 construction season and included soils, concrete, and bituminous testing. AET also provided state aid documentation for the project.

### **Greenfeld Road , Greenfield, MN**

**2024-2025**

Nick managed the geotechnical and materials testing for this project. The project consisted of the regrading and paving of an existing gravel road that included extensive amounts of organic soils that were stabilized using soil corrections and geogrid to build the road section. AET provided recommendations for the soil corrections during the geotechnical phase and provided technicians and engineers for onsite observations and testing during the construction phase.

### **Andover Crossing, Andover, MN**

**2022**

New mixed use development including grading work, utility installation, concrete, and bituminous placement. Performed testing on soils, concrete, and bituminous materials.

## Relevant Project Experience

### **Lynwood Development, Ramsey, MN**

**2022**

New townhouse development. Nick managed the project and provided materials testing during utility installation and concrete and bituminous placement.

### **Springhill Suites, St. Paul, MN**

**2018-2019**

This project consisted of the construction of a new 205,000 sq. ft. 10 story hotel, including a 3 level- integrated parking structure in the Lowertown area of St. Paul. Nick worked closely with Weis Builders providing full-time special inspections and materials testing on site. He provided full-time observations for 85 drilled caissons, materials testing of soils, concrete, and masonry, and performed all reinforcing steel and post-tensioned deck inspections. Nick also worked closely with the structural engineer of record providing elongation measurements and reporting during the post-tensioning process.

### **Chanhassen West Water Treatment Plant, Chanhassen, MN**

**2018**

New construction of a high zone pressure water treatment facility on the western side of Chanhassen. This Plant now serves as one of two treatment facilities to remove naturally occurring manganese and iron deposits from the city's deep well water. As Engineering Technician, worked closely with WSB inspector and City of Chanhassen staff.

Provided material testing of the work along with material sampling and documentation in compliance with the project requirements. This project required a mass soil correction which required multiple excavation observations to ensure proper compaction requirements were met for the replacement material.

### **Xcel Energy Colby Lake Lateral Replacement Project, Woodbury, MN**

**2018**

This project consisted of the abandonment of a 6" gas main along Valley Creek Road for approximately 2 miles in Woodbury, MN being replaced with a new 12" line. Nick worked closely with WSB, Bolton and Menk, and Xcel Energy providing materials testing and compaction testing of backfill materials and flowable fill materials for deep excavations. This project also consisted of the paving of a new bike trail over the pipeline, and spot replacements of concrete paving and curb and gutter.



**Robert Olson**  
**Senior Engineer/ Project Manager**

### Education

BS in Civil Engineering,  
University of North Dakota-Grand  
Forks

### Professional Registrations

Professional Engineer, Minnesota, No.  
45023

### Professional Certifications

American Society of Civil Engineers  
National Society of Professional  
Engineers  
City of Albertville City Council

### Contact

rolson@teamAET.com  
Office| 651-659-9001

Rob is a civil engineer with over 20 years of experience, focusing on residential and commercial development along with project management of Geotechnical and “Special Inspection” and Material Testing Projects.

He is a Professional Engineer, licensed in MN, WI, ND, SD & MT.

Rob is also certified in the Design of Construction SWPPP and Construction Site Management through the University of Minnesota and has experience with SWPPP design on design-build projects.

## Relevant Project Experience

### Ridgedale Drive Watermain Replacement, Minnetonka, 2021

The City of Minnetonka replaced approximately ½ mile of watermain along Ridgedale Drive. Mr. Olson was the project manager for the geotechnical exploration prior to construction and the construction testing services including excavation observations, soil compaction testing, and concrete testing, during construction.

### Boyer Trucks, St. Michael, MN

2020-2021

Boyer Trucks built a new office, sales and service building in St. Michael, Minnesota. Mr. Olson was the project manager for the geotechnical exploration prior to construction and the construction testing services including excavation observations, soil compaction testing, reinforcing steel observations, concrete testing, welded and bolted connection observations during construction.

### Michels, Otsego, MN

2020-2021

Michels Corporation built a new office, service, and warehouse building in Otsego, Minnesota. Mr. Olson was the project manager for the geotechnical exploration prior to construction and the construction testing services including excavation observations, soil compaction testing, reinforcing steel observations, concrete testing, welded and bolted connection observations, and pavement observations during construction.

### Whispering Hills, Victoria, MN

2016-2019

Project Manager and lead design engineer for a 40-acre residential development that consisted of 215 Villa and Townhome units. Project management and design included, due diligence, entitlements, construction plans, and construction administration for the entire project.

## Relevant Project Experience

### **Walmart & Sam's Club Stores, Minneapolis/St. Paul Area**

**2011-2012**

Designed and Managed numerous stores within the Minneapolis/St. Paul area. Design included site, utility, grading, erosion control, and stormwater treatment plans.



**Megan J. L. Hoppe, PE**  
**Senior Geotechnical Engineer**

### Education

Bachelor of Science, Civil Engineering  
University of Minnesota, 1993-1996  
Pre-Engineering Curriculum  
Bemidji State University, 1991-1993

### Professional Registrations

Professional Engineer, Minnesota No.  
49905

### Contact

mhoppe@teamAET.com  
Office | 651-659-9001

Megan has over 30 years of experience providing subsurface exploration programs, soil, and pavement testing for geotechnical and pavement projects for private, City, County, and MnDOT. Her work includes providing analysis, review, and recommendations for building, retaining wall, and bridge support; embankment construction and widening; pavement rehabilitation and design; and slope stability.

## Relevant Project Experience

### **Blue Line Light Rail Transit Extension** **2024-2025**

Geotechnical Engineer providing geotechnical design review of bridge Foundation Analysis & Design Reports (FADRs) for Minneapolis segment.

### **MnDOT Statewide Foundations Investigation Program** **2024-2025**

Lead Geotechnical Engineer for soil borings, bedrock coring, and soil laboratory testing for evaluation of subsurface conditions at various bridge sites throughout Minnesota. Preparing electronic soil boring logs and lab test reports per MnDOT requirements.

### **Blatnik Bridge Soil Investigation Program, SP 6981-26,** **2023-2024**

Lead Geotechnical Engineer directing soil borings, CPT soundings, and soil strength/consolidation testing for evaluation of subsurface conditions for new bridge spanning from Duluth, MN to Superior, WI. Fieldwork was performed from barges and from land, including environmental screening of near surface soils.

### **TH 5 & Carver CSAH 11, Victoria, MN, SP 1002-121** **2023-2025**

Reviewing Geotechnical Engineer for geotechnical exploration and MDR for new roundabout intersections, CSAH 11 reconstruction and utilities, widening and trail construction over swamp deposits.

## Relevant Project Experience

### **Carver CSAH 18, Chaska, MN, SAP 010-618-016**

**2023-2024**

Reviewing Geotechnical Engineer for geotechnical exploration, MDR, and FADR for reconstruction, widening, and new alignment of an existing gravel roadway. Provided recommendations for new bridge over Chaska Creek, infiltration ponds, muck excavation, and pavement designs. Providing review of surcharge settlement monitoring.

### **TH 610 over I-94, Maple Grove, SP 2771-118, 2780-105**

**2022-2025**

Reviewing Geotechnical Engineer for MDRs for extension of TH 610 west over I-94, referred to as new Rush Creek Boulevard, and associated ramp/loop extensions for I-94 and TH 610. Rush Creek Boulevard Project included coordination with city of Maple Grove, Hennepin County, and MnDOT. Providing review of surcharge settlement monitoring during construction.

### **TH 10/169 Reconstruction, Ramsey**

**2020-2023**

Geotechnical Engineer providing review of MDR for the reconstruction of TH 10/169 in the City of Ramsey. Project included several City of Ramsey streets, Anoka County Roads, MnDOT mainline and ramps, four new bridges, overhead signs, many MSE and CIP retaining walls, and large approach embankments. The scope included a life-cycle cost analysis, SPT borings, CPT soundings, Ground Penetrating Radar (GPR), and pavement cores.

### **TH 244 Improvements, Washington County, MN**

**2019-2022**

Provided review of geotechnical surcharge design and slope stability analysis for embankment widening through Lost Lake historic muck-out area, and pavement rehabilitation options, including full depth reclamation (FDR) and cold-in-place recycling (CIR). Field exploration included ground penetrating radar (GPR), falling weight deflectometer (FWD), soil borings, and pavement cores.

### **TH 10/169 Reconstruction, Anoka, SP 0202-108**

**2019-2021**

Geotechnical Engineer providing review of MDR for the reconstruction of TH 10/169 in the City of Anoka. Project included several City of Anoka streets, Anoka County Roads, MnDOT mainline and ramps, two new bridges, widening an existing bridge, several MSE retaining walls, and overhead signs. The exploration included SPT borings, CPT soundings, Ground Penetrating Radar (GPR), and pavement cores.



**Justin L. Staker, PE (MN)**  
**Senior Engineer**

### Education

Bachelor of Science in Civil Engineering  
University of Minnesota Duluth

### Professional Registrations

Professional Engineer, Minnesota No.  
55534

MnDOT Technical Certifications, No.  
21187 (Aggregate Production,  
Bituminous Street, Grading & Base I/II)

### Contact

jstaker@teamAET.com  
Office | 651-659-9001

Justin has 11 years of experience in geotechnical and pavement engineering and construction materials testing and observations, including significant experience with construction and soils related issues during construction. His project type experience ranges from pavements, buildings, utility infrastructure, retaining walls, and bridges throughout the public and private sectors. His recent focus has been geotechnical and pavement engineering for city and county transportation projects throughout the Twin Cities and surrounding area.

## Relevant Project Experience

### **Rice Street Capitol Area Reconstruction, St. Paul, MN 2025-Present**

Lead geotechnical engineer for the reconstruction of Rice St (CSAH 49) from John Ireland Blvd to Pennsylvania Ave near the state capitol. The project includes bituminous pavement, traffic signals, concrete sidewalk, multiuse trail, storm sewer, watermain and sanitary services, and stormwater treatment/infiltration basins. This corridor is part of the future G Line BRT route.

### **TH 36 and CSAH 17, Lake Elmo & Grant, MN 2024-Present**

Project manager and geotechnical engineer for materials design recommendations (MDR), including grading and surfacing for roadway reconstruction and new infiltration basins. Authored foundation analysis and design recommendations (FADR) for two proposed bridges with spread foundations, replacing an at-grade signalized intersection. Also prepared FADRs for traffic signals, high-tension cable barriers, and retaining walls. Field scope included 119 SPT borings, 18 SCPTu soundings, and 2 piezometers.

### **Opus Bridges Phases 1 and 2, Minnetonka, MN 2021-2023**

Project manager for Quality Assurance (QA) testing. Oversaw MnDOT-certified testers to ensure compliance with MnDOT State Aid standards. Projects involved replacing six bridges with Geosynthetic Reinforced Soil (GRS) abutments and cast-in-place concrete decks and barrier walls. AET's responsibilities included compaction, gradation, direct shear, concrete, and bituminous testing, as well as final reporting.

### **CSAH 5 Improvements, Stillwater, MN 2023**

Lead geotechnical engineer for pavement rehabilitation of a four-lane divided roadway. Exploration included of ground penetrating radar (GPR), falling weight deflectometer (FWD), SPT borings, pavement coring, and lab testing. Recommendations included mill and overlay designs, bituminous trail sections, and loop detector depths using GPR to aid county planning.

## Relevant Project Experience

### **109<sup>th</sup> Ave Improvements, Brooklyn Park & Champlin, MN**

**2023**

Lead geotechnical engineer for the reconstruction and widening of 109<sup>th</sup> Avenue to include an additional lane and turn lanes. The exploration consisted of standard penetration test (SPT) borings, flight auger borings, pavement cores, and laboratory testing. Bituminous pavement designs were provided for the roadways; and concrete and bituminous pavement designs were provided for a roundabout. The project also included a stormwater BMP area in which a hydraulic conductivity (permeability) test was performed to help infiltration design.

### **2024 Street Reconstruction, New Brighton, MN**

**2023**

Lead geotechnical engineer for the reconstruction of multiple bituminous-surfaced streets and utilities, including deeper storm sewer installations. The exploration consisted of SPT borings, pavement cores, sieve analyses, and moisture testing. Recommendations included bituminous section design and utility support.

### **Dale Street Mill and Overlay, Saint Paul, MN**

**2023**

Lead geotechnical engineer for the pavement rehabilitation of a roadway consisting of deteriorated bituminous and underlying concrete pavement intended for a 4-2 lane conversion. The exploration consisted of a GPR survey and pavement cores. The geotechnical report included recommendations for mill and overlay design and GPR analysis.

### **Tonka-Woodcroft & Minnetonka Blvd Trail Improvements, Minnetonka, MN**

**Year**

Lead geotechnical engineer for the reconstruction and a new bituminous trail through a narrow corridor adjacent to Frederick Lake. Included a cast-in-place retaining wall supported by pipe piles due to swamp deposits and soft soils, and 50+ feet directional drilling for stormwater utilities. Provided design parameters for retaining walls, pavement sections, utility support, and stormwater infiltration. Also served as project manager for compaction, concrete, bituminous, and infiltration testing (using MPD infiltrometer), as well as subgrade evaluations and pile driving analyzer (PDA) reviews.



**Neil Lund**  
Principle Engineer

### Education

B.S., Civil Engineering University of Minnesota, Twin Cities 2003

### Professional Registrations

Minnesota, No. 46212  
Alabama, No. PE54720  
Arizona, No. 82055  
Arkansas, No. 22627  
Colorado, No. 64292  
Illinois, No. 062.076188  
Nebraska, E-21335  
Kansas, No. PE30512  
Ohio, No. PE.90708  
Oklahoma, PE 35955  
Texas, No. 151959  
Washington, No. 25034020  
Wisconsin, No. 102568-8

### Contact

nlund@teamAET.com  
Office | 651659-9001

Neil Lund is a registered Professional Engineer in Minnesota with over 20 years of experience in pavement and geotechnical engineering. His expertise includes managing and executing complex investigations, analyses, and evaluations for public infrastructure and private developments.

Neil's experience includes a range of projects such as municipal street improvements, geotechnical and nondestructive testing for county highways, design-build major trunk highways, and pavement network consulting for national retailers. His broad background enables him to provide cost-effective, practical engineering solutions tailored to project needs and performance objectives.

## Relevant Project Experience

### Ramsey MN Bowers Drive Mill and Overlay

2023

- Served as the Geotechnical Engineer on a selection of recent municipal projects.
- Scoped and directed field explorations to assess site and subsurface conditions.
- Performed detailed engineering analyses to evaluate soil behavior, stability, and support characteristics.
- Developed grading and materials recommendations to guide design and construction activities.
- Ensured that subsurface conditions, material performance, and design parameters aligned with project requirements and engineering best practices.

### Ramsey MN 167th Ave Coring and SFDR Mix Design

2023

- Ensured that subsurface conditions, material performance, and design parameters aligned with project requirements and engineering best practices.
- Performed detailed engineering analyses to evaluate soil behavior, stability, and support characteristics.
- Served as the Geotechnical Engineer on a selection of recent municipal projects.
- Scoped and directed field explorations to assess site and subsurface conditions.

### Ramsey MN GPR Evaluation

2020

- Developed grading and materials recommendations to guide design and construction activities.
- Served as the Geotechnical Engineer on a selection of recent municipal projects.
- Scoped and directed field explorations to assess site and subsurface conditions.
- Ensured that subsurface conditions, material performance, and design parameters aligned with project requirements and engineering best practices.

## Relevant Project Experience

### Maple Grove, MN Weaver Lake Rd

2024-2025

- Served as the Geotechnical Engineer on a selection of recent municipal projects.
- Scoped and directed field explorations to assess site and subsurface conditions.
- Performed detailed engineering analyses to evaluate soil behavior, stability, and support characteristics.
- Developed grading and materials recommendations to guide design and construction activities.
- Ensured that subsurface conditions, material performance, and design parameters aligned with project requirements and engineering best practices.

### City of Minnetonka, MN

2025-2028

- Served as the Geotechnical Engineer on a selection of recent municipal projects.
- Scoped and directed field explorations to assess site and subsurface conditions.
- Performed detailed engineering analyses to evaluate soil behavior, stability, and support characteristics.
- Developed grading and materials recommendations to guide design and construction activities.
- Ensured that subsurface conditions, material performance, and design parameters aligned with project requirements and engineering best practices.

### Street Construction Evaluation

2024

- Ensured that subsurface conditions, material performance, and design parameters aligned with project requirements and engineering best practices.
- Served as the Geotechnical Engineer on a selection of recent municipal projects.
- Performed detailed engineering analyses to evaluate soil behavior, stability, and support characteristics.
- Scoped and directed field explorations to assess site and subsurface conditions.
- Developed grading and materials recommendations to guide design and construction activities.

### St. Paul, MN University Ave

2024-2025

- Performed detailed engineering analyses to evaluate soil behavior, stability, and support characteristics.
- Served as the Geotechnical Engineer on a selection of recent municipal projects.
- Scoped and directed field explorations to assess site and subsurface conditions.
- Developed grading and materials recommendations to guide design and construction activities.
- Ensured that subsurface conditions, material performance, and design parameters aligned with project requirements and engineering best practices.
- Water Tower Rehabilitation

### St. Paul, MN Ayd Mill Road

2020-2021

- Served as the Geotechnical Engineer on a selection of recent municipal projects.
- Scoped and directed field explorations to assess site and subsurface conditions.
- Performed detailed engineering analyses to evaluate soil behavior, stability, and support characteristics.
- Developed grading and materials recommendations to guide design and construction activities.
- Ensured that subsurface conditions, material performance, and design parameters aligned with project requirements and engineering best practices.

### Northfield, MN Trunk Watermain

2023

- Ensured that subsurface conditions, material performance, and design parameters aligned with project requirements and engineering best practices.
- Developed grading and materials recommendations to guide design and construction activities.
- Performed detailed engineering analyses to evaluate soil behavior, stability, and support characteristics.
- Scoped and directed field explorations to assess site and subsurface conditions.
- Served as the Geotechnical Engineer on a selection of recent municipal projects.



**Reice Golden  
Technician II**

### Education

BS in Nuclear Engineering, Missouri  
University of Science and Technology,  
2016

### Technical Certifications

MnDOT – Grading and Base  
Tester/Inspector  
MnDOT – Bituminous Street Inspector  
MnDOT – Concrete Plant  
MnDOT – Bituminous Plant  
MnDOT – Aggregate Production  
ACI Concrete Field  
Nuclear Radiation Guage Safety and  
Transportation

### Contact

rgolden@teamAET.com  
Office| 651-659-9001

Reice is a Field Technician with five years of experience in construction and materials testing. His current focus is on concrete and soil testing, with plans to further broaden his expertise across additional inspection disciplines. Reice performs quality control field and laboratory testing of construction materials, including soils, concrete, masonry, and bituminous materials. His responsibilities also include field inspections of reinforcing steel and anchor bolt installations, along with the observation and inspection of deep foundation stabilization systems. Dedicated to accuracy and quality, Reice ensures that all materials and construction activities meet project specifications and industry standards through thorough testing, detailed documentation, and field verification.

## Relevant Project Experience

### **Ramsey Water Treatment Plant, Ramsey, MN** **2023-2025**

New Water treatment facility built next to the public works building. Reice worked with Magney Construction and AE2S to perform soils, concrete, reinforcing steel and adhesive anchor inspections throughout the years of construction.

### **Oak Grove Fire Station, Oak Grove, MN** **2025-Present**

A new fire station currently being built. Reice has worked with project inspection staff to perform soils, concrete, and reinforcing steel inspections

### **Waterfront Village, Ramsey, MN** **2024-Present**

New townhouse development. Reice performed soils, concrete, and bituminous materials testing to verify compliance with project specifications and quality standards.

### **Trott Brook Development, Ramsey, MN** **2023-Present**

New residential development. Reice performed soils, concrete, and bituminous materials testing to verify compliance with project specifications and quality standards.

### **Lynwood Development, Ramsey, MN** **2022**

New townhouse development. Reice provided materials testing during utility installation an concrete and bituminous placement.



**Randy Liebelt**  
Field Engineer

### Education

BS in Civil Engineering, North Dakota State University

### Technical Certifications

MnDOT – Aggregate Production Tester/Inspector  
MnDOT – Grading and Base Tester/Inspector  
MnDOT – Concrete Field Tester/Inspector  
MnDOT – Concrete Plant Tester  
MnDOT – Bituminous Street Inspector  
MnDOT – Bituminous Plant Tester/Inspector  
MnDOT – Bridge Construction  
MnDOT – Concrete Strength Tester  
Troloxer Nuclear Density Gauge and Hazmat  
OSHA 10-Hour Safety  
Construction Site Management – Erosion and Stormwater

### Contact

rliebelt@teamAET.com  
Office | 651-659-9001

Randy Liebelt is a Field Engineer with over 8 years of experience in construction materials observation, testing, and inspection. His background includes performing both quality control (QC) and quality assurance (QA) testing and observations for a wide range of private and public sector clients. He is experienced in supporting field operations to ensure construction materials and practices meet applicable specifications, standards, and client requirements.

## Relevant Project Experience

### Word of Peace Church Addition - Rogers, MN

2025-Present

This church addition project included the main addition on the north side of the existing building, a new mezzanine overlooking the gymnasium, and extra parking stalls along the northwest drive lane entrance. Randy served as the project manager of the construction materials testing and special inspection services.

### Greenfield Road Reconstruction - Greenfield, MN

2024-2025

The reconstruction of Greenfield Road consisted of rebuilding and widening the main road core (often stabilizing with geogrid), placing bituminous pavement, upgrading drainage with storm sewer and concrete curb/gutter, and improving site lines. Randy worked with the engineer to perform grading and base inspections and performed plastic concrete testing.

### 169 Redefine - Elk River, MN

2022-2023

This three-year project involved reconstructing all four-lanes of Hwy 169 through Elk River from TH-10 to 197<sup>th</sup> along with improvements for adjacent roadways, constructing four new interchanges, upgrading underground infrastructure and utilities, improving interchange access, and replacing the northbound Hwy 101/169 bridge. Randy worked jointly with MnDOT, the City of Elk River, and Sherburne County project staff as a grading inspector and the lead materials tester.

### MN Highway 23 North Gap

2022

This two-year project reconstructed and expanded nine miles of Hwy 23 from two to four lanes between Stearns CR 33 in Paynesville and Hwy 22/Grant Ave SW in Richmond. The project played a vital part in improving traffic flow, corridor performance, capacity, and overall safety. Randy worked with MnDOT as the lead materials tester.



**Table 1**  
**2026 Construction Materials Testing Service Rates**  
**Ramsey, Minnesota**

	Unit Cost
<b>Personnel Rates</b>	
Principal Engineer	\$280.00 per hour
Senior Engineer	\$230.00 per hour
Engineer II / Project Manager	\$200.00 per hour
Engineer I / Project Manager	\$170.00 per hour
Engineering Assistant / EIT	\$170.00 per hour
Engineering Technician II (Special Inspector/MnDOT Certified)	\$120.00 per hour
Engineering Technician I	\$105.00 per hour
Project Administrator	\$90.00 per hour
Project Summary Report (Non-State Aid Projects)	\$450.00 per report
Project Summary Report (State Aid Projects)	Varies
<b>Field &amp; Laboratory Testing - Soils &amp; Aggregates</b>	
Density/Moisture Relationship of Soil	
Standard Proctor (ASTM D698)	\$195.00 per test
Modified Proctor (ASTM D1557)	\$195.00 per test
Cohesive Soil Preparation	\$50.00 per sample
Field Density Test	
By Nuclear Method (ASTM D6938)	\$46.00 per test
By Sand-Cone (ASTM D1556)	\$97.00 per test
MnDOT Modified Dynamic Cone Penetrometer	\$63.00 per test
Moisture Content (ASTM D2216)	\$19.00 per test
Mechanical Analysis through #200 Sieve (ASTM C136 & D1140)	\$170.00 per test
Mechanical Analysis through 0.001 mm by Hydrometer Method (ASTM D7928)	\$303.00 per test
Mechanical Analysis Percent Passing #200 Sieve (ASTM D1140)	\$67.00 per test
Percent Crushed (ASTM D5821)	\$230.00 per test
Fine Aggregate Angularity (ASTM C1252)	\$146.00 per test
Specific Gravity (ASTM D854)	\$182.00 per test
Organic Content of Soil (ASTM D2974)	\$100.00 per test
MnDOT Topsoil Borrow (Mechanical Analysis, Organic Content, Nutrients, pH)	\$358.00 per sample
<b>Field &amp; Laboratory Testing - Concrete</b>	
Slump (ASTM C143), Temperature (ASTM C1064), and Air Entrainment Tests (ASTM C185)	Hourly Rates Apply
Casting, Curing (ASTM C31), Testing (ASTM C873) & Reporting Compressive Strength of Concrete Cylinders	
6" x 12" Cylinder	\$56.00 per cylinder
4" x 8" Cylinder	\$44.00 per cylinder
Securing Samples from Hardened Concrete by Coring (ASTM C42)	Hourly Rates Apply



**Table 1**  
**2026 Construction Materials Testing Service Rates**  
**Ramsey, Minnesota**

	Unit Cost
<b>Field &amp; Laboratory Testing - Bituminous</b>	
MnDOT Gyratory Mix Properties (Gyratory Density, Rice's Specified Gravity, Bituminous Extraction and Mechanical Analysis of Aggregates, Fine Aggregate Angularity, and Percent Crushed)	\$656.00 per sample
Bituminous Extraction and Mechanical Analysis of Aggregates (ASTM D2172, C136 & C117)	\$348.00 per test
Percent Crushed (ASTM D5821)	\$230.00 per test
Fine Aggregate Angularity (ASTM C1252)	\$146.00 per test
Rice's Maximum Theoretical Specific Gravity (ASTM D2041)	\$149.00 per test
Securing Samples from Bituminous by Coring (AASHTO T-168-03)	Hourly Rates Apply
Bituminous Field Density Test by Nuclear Method (ASTM D2950)	\$46.00 per test
Core Sample Bulk Density (ASTM D2726)	\$61.00 per core
<b>Travel Expenses</b>	
Trip Charge (from Albertville with 24 hour notification)	\$80.00 per trip
Trip Charge (from St. Paul with less than 24 hour notification)	\$160.00 per trip



**Table 2**  
**2026 Geotechnical Service Rates**  
**Ramsey, Minnesota**

	Unit Cost
<b>Personnel Rates</b>	
Principal Engineer	\$280.00 per hour
Senior Engineer	\$230.00 per hour
Engineer II /Project Manager	\$200.00 per hour
Engineer I / Project Manager	\$170.00 per hour
Engineering Assistant / EIT	\$170.00 per hour
Driller / Drilling Technician	\$130.00 per hour
Drill Lead	\$145.00 per hour
Instrumentation Specialist	\$200.00 per hour
Draftsperson I (for soil boring layout exhibits)	\$125.00 per hour
Project Administrator	\$90.00 per hour
<b>Travel Expenses</b>	
Personal Automobile/Truck	\$1.25 mile
Auxiliary Vehicle Mileage	\$1.50 mile
Truck with Warning Sign/Crash Trailer	\$1.60 mile
Truck with Drill Rig	\$1.80 mile
CPT Truck Rig (20-ton push capacity)	\$2.10 mile
Tractor/Lowboy Trailer	\$2.35 mile
<b>Project Direct Expenses</b>	
Borehole Grouting Per Foot - Bentonite Grout	\$2.00 Foot
Borehole Grouting Per Foot - Neat Cement Grout	\$12.00 Foot
<b>Equipment Rental</b>	
Truck with Drill Rig Rental	\$120.00 Hour
Heavy-Duty Truck with Drill Rig Rental	\$150.00 Hour
ATV Drill Rig Rental	\$160.00 Hour
Heavy-Duty ATV Drill Rig Rental	\$180.00 Hour
CPT Rig Rental	\$215.00 Hour
Trailer Rental	\$100.00 Day
Truck with Warning Sign/Crash Trailer Rental	\$60.00 Hour
Company Vehicle Rental	\$32.00 Hour
Coring Equipment - Hourly	\$78.00 Hour
GPS Equipment Rental	\$221.00 Day
Double Ring Infiltration Equipment Rental	\$353.00 Day
Modified Philip-Dunne (MPD) Infiltrometer	\$353.00 Day



**Table 2**  
**2026 Geotechnical Service Rates**  
**Ramsey, Minnesota**

	Unit Cost
<b>Laboratory Testing of Aggregate and Soil Samples</b>	
AASHTO Soil Suite - Sulfate, Chloride, and pH	\$640.00 Sample
California Bearing Ratio of Cohesive Soils (1 pt.) (ASTM D1883)	\$424.00 Test
California Bearing Ratio of Granular Soils (ASTM D1883)	\$827.00 Test
Unconfined Compressive Strength of Cohesive Soil (ASTM D2166)	\$140.00 Test
Consolidation Properties of Soils (up to 32 tsf, P-e & Time Curves) (ASTM D2435)	\$799.00 Test
Consolidation Properties of Soils (with P-e curve only) (ASTM D2435)	\$651.00 Test
R-value of Compacted Soils by Hveem Stabilometer (ASTM D2844)	\$520.00 Test
Atterberg Limits, Liquid Limit or Plastic Limit, Individual (ASTM D4318)	\$139.00 Test
Atterberg Plasticity Index (ASTM D4318)	\$155.00 Test
Thermal Conductivity of Soil, as received and oven dried (ASTM D5334)	\$1,160.00 Test
Thermal Conductivity of Soil, Dry Out Curve (ASTM D5334)	\$1,439.00 Test
Lab Determination of Dry Density of Soil (includes water content)	\$100.00 Test
Soil Resistivity by Wenner Probe (ASTM G57)	\$122.00 Test
Soil Resistivity Using the Two Electrode Soil Box Method (ASTM G187)	\$137.00 Each
Hand Penetrometer / Torvane	\$19.00 Test
Thin Wall Sample Extrusion	\$43.00 Each
Thin Wall Sampler Replacement	\$34.00 Each

## **SECTION 1 - RESPONSIBILITIES**

**1.1** – This Service Agreement – Terms and Conditions (“terms and conditions”) is applicable to all services (“Services”) provided by American Engineering Testing, Inc. (AET). As used herein “Services” refer to the scope of Services described in the proposal submitted by AET to Client. The proposal, these terms and conditions and any appendices attached hereto shall comprise the agreement (“Agreement”) between AET and Client for Services described in the proposal and are binding upon the Client, its successors, assignees, joint ventures and third-party beneficiaries. **AET requests written acceptance of the Agreement, but the following actions shall also constitute Client’s acceptance of the Agreement: 1) issuing an authorizing purchase order, task order, service order, or any other documentation for any of the Services, 2) authorizing AET’s presence on site, or 3) written or electronic notification for AET to proceed with any of the Services.** Issuance of a purchase order, task order or service order by Client which contains separate terms and conditions will not take precedence or modify the terms and conditions contained in this Service Agreement AND THE TERMS AND CONDITIONS OF THIS SERVICE AGREEMENT AND ANY CORRESPONDING PROPOSAL ISSUED BY AET SHALL GOVERN UNLESS AUTHORIZED IN WRITING IN ADVANCE BY AET.

**1.2** - Prior to AET performing Services, Client will provide AET with all information that may affect the cost, progress, safety and performance of the Services. This includes, but is not limited to, information on proposed and existing construction, all pertinent sections of contracts between Client and their client and/or Owner which contain flow-down provisions to AET, if they are included, site safety plans or other documents which may control or affect AET’s Services. If new information becomes available or changes are made during AET’s Services, Client will provide such information to AET in a timely manner. Failure of Client to timely notify AET of changes to the project including, but not limited to, location, elevation, loading, or configuration of the structure or improvement will constitute a release of any liability of AET. Client will provide a representative for timely answers to project-related questions by AET.

**1.3** - AET observes and tests earthwork and other construction operations and materials, and may provide opinions, conclusions and recommendations regarding the same. However, AET’s Services do not relieve the contractors of their contractual responsibility to perform their work in accordance with approved plans, specifications and building code requirements.

**1.4** - AET personnel do not have authority to accept, reject, direct or otherwise approve the work of the contractor. AET cannot stop work or waive or alter the requirements of the project documents. Any authority given to AET by Client must be in writing prior to the start of Services.

**1.5** - AET does not perform construction management, general contracting or surveying services and our involvement with the project does not constitute any assumption of those responsibilities.

**1.6** - Services performed by AET often include sampling at specific locations. Client acknowledges the limitations inherent in sampling. Variations in conditions occur between and beyond sampled/tested locations. The passage of time, natural occurrences and direct or indirect human activities at the site or distant from it may alter the actual conditions. Client assumes all risks associated with such variations.

**1.7** - AET is not responsible for interpretations or modifications of AET’s recommendations by other persons.

**1.8** - Should change in conditions be alleged, Client agrees to notify AET before evidence of alleged change is no longer accessible for evaluation.

**1.9** - Test borings and/or cone penetration test soundings to a proper depth below foundation grade and the base of suitable bearing soils are recommended to explore the deeper unseen soil and ground water conditions. Judgments made by AET personnel regarding the suitability of materials and ground water conditions below the bottom of an excavation are limited if sufficiently deep test borings/soundings are not provided by the Client prior to our observations and judgments. AET’s opinions, conclusions and recommendations are qualified to that extent.

**1.10** – Pricing in the proposal assumes use of these terms and conditions. AET reserves the right to amend pricing if Client requests modifications to the Agreement or use of Client’s alternate contract format. Any contract amendments made after Client has authorized the Services shall be applicable only to Services performed after the effective date of such amendment. The proposal and these terms and conditions, including terms of payment, shall apply to all Services performed prior to the effective date of such amendment.

**1.11** – The AET proposal accompanying these terms and conditions is valid for thirty (30) days after the proposal issuance date to the Client. Any attempt to authorize Services after the expiration date is subject to AET’s right to revise the proposal as necessary.

## **SECTION 2 – ON CALL SERVICES**

**2.1** - If AET’s Services are performed on an on-call basis at the direction of the Client or its authorized representatives, Client acknowledges the inherent limitations associated with performing engineering judgments and testing Services on an on-call basis, including without limitation, the inability to completely evaluate, document or judge work and conditions not directly observed or tested by AET. AET’s opinions, conclusions, and recommendations are qualified to the extent of those limitations.

**2.2** - Density tests of fill soils represent conditions only at the locations and elevations tested and do not necessarily represent conditions laterally, above or below. AET can only provide judgments regarding the engineered fill system to adequately support the design construction loadings by monitoring the filling process on a continuous basis for consistency of soil type, moisture content, lift thickness, and compaction effort.

**2.3** – AET requires a minimum of 24 hours’ notice of the need for Services. AET will not be liable for claims, damages, or delays related to failure of Client to provide adequate advance notice to AET.

## **SECTION 3 - SAFETY**

**3.1** - Client shall inform AET of any known or suspected hazardous materials or unsafe conditions at the site. Client or its authorized representative(s) is responsible for the safety of the jobsite. If, during the course of AET’s Services, such materials or conditions are discovered, AET reserves the right to take measures to protect AET personnel and equipment or to immediately terminate Services. Client shall be responsible for payment of such additional protection costs.

**3.2** - AET shall only be responsible for safety of AET employees at the site; the safety of all others shall be Client's or other persons' responsibility.

## **SECTION 4 - SAMPLES**

**4.1** - Client shall inform AET of any known or suspected hazardous materials prior to submittal to AET. All samples obtained by or submitted to AET remain the property of the Client during and after the Services. Any known or suspected hazardous material samples will be returned to the Client at AET’s discretion.

**4.2** - Non-hazardous samples will be held for thirty (30) days and then discarded unless, within thirty (30) days of the report date, the Client requests in writing that AET store or ship the samples. Storage and shipping costs shall be borne solely by Client.

**SECTION 5 - PROJECT RECORDS**

The original project records prepared by AET will remain the property of AET. AET shall retain these original records for a minimum of three years following submission of the report, during which period the project records can be made available to Client at AET's office at reasonable times.

**SECTION 6 - STANDARD OF CARE**

AET performs its Services consistent with the level of care and skill normally performed by other firms in the profession at the time of this service and in this geographic area, under similar budgetary constraints.

**SECTION 7 - INSURANCE**

AET maintains insurance with coverage and minimum limits shown below. AET will furnish certificates of insurance to Client upon request.

**7.1** –

Workers' Compensation Employer's Liability	Statutory Limits \$100,000 each accident \$500,000 disease policy limit \$100,000 disease each employee
Commercial General Liability	\$1,000,000 each occurrence \$1,000,000 aggregate
Automobile Liability	\$1,000,000 each accident
Professional/Pollution Liability Insurance	\$1,000,000 per claim \$1,000,000 aggregate

**7.2** - Commercial General Liability insurance will include coverage for Products/Completed Operations extending one (1) year after completion of AET's Services as outlined in our proposal, Property Damage, Personal Injury, and Contractual Liability coverage applicable to AET's indemnity obligations under this Agreement.

**7.3** - Automobile Liability insurance shall include coverage for all owned, hired and non-owned automobiles.

**7.4** - Professional/Pollution Liability Insurance is written on a claims-made basis and coverage will be maintained for one (1) year after completion of AET's Services as outlined in our proposal. Renewal policies during this period shall maintain the same retroactive date.

**7.5** - **To the extent permitted by applicable state law, and upon Client's signing of the proposal, which includes these Terms and Conditions, and return of the same to AET, or Client provided forms of acceptance as defined in Section 1.1; Client and Owner shall be named an "additional insured" on AET's Commercial General Liability Policy (Form CG D4 14, which includes blanket coverage for the Additional Insured on a Primary and Non-Contributory basis). Client and Owner shall also be named an "additional insured" on a Primary and Non-contributory basis on AET's Automobile Liability Policy (Form CA T4 74). Any other endorsement, coverage or policy requirement may result in additional charges.**

**7.6** - AET will maintain insurance coverage required by this Agreement at its sole expense, provided such insurance is reasonably available, with insurance carriers licensed to do business in the state in which the project is located and having a current A.M. Best rating of no less than A minus (A-). Such insurance shall provide for thirty (30) days prior written notice to Client for notice of cancellation or material limitations for the policy or ten (10) days' notice for non-payment of premium.

**7.7** - AET reserves the right to charge Client for AET's costs for additional coverage requirements unknown on the date of the proposal, e.g., coverage limits or policy modification including waiver of subrogation, additional insured endorsements and other project specific requirements.

**SECTION 8 - DELAYS**

If delays to AET's Services are caused by Client or Owner, other parties, strikes, natural causes, pandemic, weather, or other items beyond AET's control, a reasonable time extension for performance of the Services shall be granted, and AET shall receive an equitable fee adjustment.

**SECTION 9- PAYMENT, INTEREST AND BREACH**

**9.1** - Invoices are due net thirty (30) days from the date of receipt of an undisputed invoice. Invoices will be paid without reductions for bond or retention. Client will inform AET of invoice questions or disagreements within fifteen (15) days of invoice date; unless so informed, invoices are deemed correct.

**9.2** – Invoices remaining unpaid for sixty (60) days shall constitute a material breach of this Agreement, permitting AET, in its sole discretion and without limiting any other legal or equitable remedies for such breach, to terminate performance of this Agreement and be relieved of any associated duties to the Client or other persons. Further, AET may withhold from Client data and reports in AET's possession. If Client fails to cure such breach, all reports associated with the unpaid invoices shall immediately upon demand be returned to AET and Client may neither use nor rely upon such reports or the Services.

**9.3** – AET reserves the right to pursue any unpaid invoice utilizing available remedies at law. AET explicitly reserves its Mechanic Lien or Bond Claim rights for nonpayment of an undisputed invoice. Client is responsible for paying AET expenses and attorney fees related to collection of past due invoices.

**9.4** – AET reserves the right to charge a 2.5% fee on any payment made using a credit card or debit card.

## **SECTION 10 - CHANGE ORDERS**

AET's proposal associated with this project may provide an estimated cost for the work. If the proposal amount is a time and material estimate, or if changes occur affecting the project scope, estimated quantities, project schedule or other unforeseen conditions, AET will communicate with Client and request a change order. However, nothing in this agreement shall be construed in any way as a waiver of payment by Client to AET for Services authorized under this agreement. Approval of a change order may be in writing, by electronic communication, or any directive for additional Services.

## **SECTION 11 - MEDIATION**

**11.1** - Except for enforcement of AET's rights to payment for Services rendered or to assert and/or enforce its lien rights, including without limitation assertion and enforcement of mechanic's lien rights and foreclosure of the same, Client and AET agree that any claim, dispute or other matter in question arising out of or related to this Agreement shall be subject to mediation as a condition precedent to arbitration or the institution of legal or equitable proceedings by either party; provided however that if either party fails to respond to a request for mediation within sixty (60) days, the party requesting mediation may without further notice, proceed to arbitration or the institution of legal or equitable proceedings.

**11.2** - Mediation shall be in accordance with the Construction Industry Mediation Rules of the American Arbitration Association. Request for mediation shall be in writing and the parties shall share the mediator's fee and any filing fees equally and each party shall pay their own legal fees. The mediator shall be acceptable to both parties and shall have experience in commercial construction matters.

## **SECTION 12 - LITIGATION REIMBURSEMENT**

Except for matters relating to non-payment of fees, which is governed by Section 10 hereof, payment of attorney's fees and costs associated with lawsuits or arbitration of disputes between AET and Client, which are dismissed or are judged substantially in either party's favor, shall be paid by the non-prevailing party. Applicable costs include, but are not limited to, attorney and expert witness fees, court costs, and other direct costs.

## **SECTION 13 - MUTUAL INDEMNIFICATION**

**13.1** - Subject to the limitations contained in Sections 14 and 17, AET agrees to indemnify Client from and against damages and costs to the extent caused by AET's negligent performance of the Services.

**13.2** - Client agrees to indemnify AET from and against damages and costs to the extent caused by the intentional acts or negligence of the Client, Owner, Client's contractors and subcontractors or other third parties.

**13.3** - If Client has an indemnity agreement with other persons or entities relating to the project for which AET's Services are performed, the Client shall include AET as an Additional Insured.

**13.4** - AET's indemnification to the Client, including any indemnity required or implied by law, is limited solely to losses or damages caused by its failure to meet the standard of care and only to the extent of its negligence.

## **SECTION 14 - NON-SOLICITATION**

Each party to this Agreement (a "Party") agrees that it will not encourage, induce, or actively solicit any employee of the other party to leave their employment for any reason, provided that neither Party is precluded from (a) hiring any such employee who has been terminated by a Party or its subsidiaries prior to commencement of employment discussions between a Party and such employee, or (b) soliciting any such employee by means of a general advertisement or through an employment agency that does not specifically pursue the employee, or (c) hiring employees or former employees of the other Party who contact the Party on its own accord. This Non-Solicitation provision shall be effective and enforceable for six (6) months following termination of this Agreement.

## **SECTION 15- MUTUAL WAIVER OF CONSEQUENTIAL DAMAGES**

Except as specifically set forth herein and to the extent permitted by applicable law, Client and AET waive against each other, and each other's officers, directors, members, subcontractor, agents, assigns, successors, partners, and employees any and all claims for or entitlement to special, incidental, indirect, punitive, or consequential damages arising out of, resulting from, or in any way related to the Services provided by AET under this Agreement. This mutual waiver of consequential damages includes, but is not limited to, the following: loss of profits; loss of revenue; rental costs/expenses incurred; loss of income; loss of use of property, equipment, materials or services; loss of opportunity; loss of rent; loss of good will; loss of financing; loss of credit; diminution of value; loss of business and reputation; loss of management or employee productivity or the services of such persons; increased financing costs; cost of substitute facilities; cost of substitute goods/property/equipment; cost of substitute services; and/or cost of capital. This mutual waiver is applicable, without limitation, to all consequential damages due to either party's termination of this Agreement in accordance with the provisions of the Agreement and related documents and shall survive any such termination.

## **SECTION 16 - LIMITATION OF LIABILITY**

To the fullest extent permitted by applicable law, the total aggregate liability of AET and its officers, directors, partners, employees, subcontractors, agents, and sub-consultants, to Client and/or Client's employees, officers, directors, members, agents, assigns, successors, or partners, or anyone claiming through Client, for any and all injuries, damages, claims, losses, or expenses (including attorney's fees and costs) arising out of, resulting from or in any way related to Services provided by AET from any cause or causes, including, but not limited to, its negligence, professional errors and omissions, strict liability, breach of contract, or breach of warranty shall not exceed the total compensation in excess of costs received by AET for Services or \$50,000, whichever is less. The limitation of liability set forth herein does not apply to claims arising solely out of or related to the willful or intentional acts of AET.

## **SECTION 17 - POSTING OF NOTICES ON EMPLOYEE RIGHTS**

Effective June 21, 2010, prime contracts with a value of \$100,000 or more and signed by federal contractors on projects with any agency of the United States government must comply with 29 CFR Part 471, which requires physical posting of a notice to employees of their rights under Federal labor laws. The required notice may be found at [29 Code of Federal Regulations Part 471, Appendix A to Subpart A](#). The regulation also has a "flow-down" requirement for subcontractors under the prime agreement for subcontracts with a value of \$10,000 or more. AET requires strict compliance of its subcontractors working on federal contracts subject to this regulation. The regulation has specific requirements for location of posting and language(s) for the poster.

## **SECTION 18 - TERMINATION**

After 7 days' written notice, either party may elect to terminate work for justifiable reasons. In this event, the Client shall pay AET for all Services performed, including demobilization and reporting costs to complete the Services.

## **SECTION 19 - SEVERABILITY**

Any provisions of this Agreement later held to violate a law or regulation shall be deemed void, and all remaining provisions shall continue in force. However, Client and AET will in good faith attempt to replace an invalid or unenforceable provision with one that is valid and enforceable, and which comes as close as possible to expressing the intent of the original provision.

## **SECTION 20 - GOVERNING LAW**

This Agreement shall be construed in accordance with the Laws of the State of Minnesota without regard to its conflicts of law provisions.

## **SECTION 21 - ENTIRE AGREEMENT**

This Agreement, including these terms and conditions and attached proposal and appendices, is the entire agreement between AET and Client. Regardless of method of acceptance of this Agreement by the Client, this Agreement supersedes any written or oral agreements, including purchase/work orders or other Client agreements submitted to AET after the start of our Services. Any modifications to this Agreement must be mutually acceptable to both parties and accepted in writing. No considerations will be given to revisions to AET's terms and conditions or alternate contract format submitted by the Client as a condition for payment of AET's accrued Services.

## **SECTION 22 - SITE ACCESS, UNDERGROUND FACILITIES AND CONSTRUCTION STAKING (CONSTRUCTION)**

**22.1** - Client will furnish AET safe and legal site access.

**22.2** - With the exception of public utilities which AET will contact state "call before you dig" notification centers (e.g. Gopher State One call in Minnesota), Client will mark or cause to be marked the location of all other underground utilities and structures (Facilities) that service or are located on the site. AET shall be entitled to rely upon the accuracy of all location information supplied by any source.

**22.3** - Client shall hold harmless, indemnify and defend AET from all claims, damages, losses, fines, penalties and expenses (including attorney's fees) arising out of or related to the following: a) Facilities that are not shown or vary from the locations shown on any plans or drawings, b) Facilities that are not located by or vary from the locations marked by Client, governmental or quasi-governmental locator programs, or private utility locating services, or c) any other Facilities that are not disclosed or vary from locations provided by the Client. The obligation to defend AET shall be independent of the obligation to indemnify and hold harmless AET and shall be with independent counsel acceptable to AET.

**22.4** - The location and elevation of a proposed structure or facility shall be staked (with offsets) and controlled by surveying or GPS equipment by others. AET's measurements are made in relation to that information. The reliability of any opinions, conclusions, and recommendations based on those measurements is strictly dependent on the accuracy of the staking or GPS information provided by others.

**22.5** - During construction, observations and testing Services are based on the positioning of the formwork by the contractor or its subcontractor. AET will not be responsible for any errors or damages resulting from improper location or positioning of the formwork.

**22.6** - Client acknowledges that in the normal course of its Services, AET may unavoidably alter existing site conditions or affect the environment in the area being studied. AET will take reasonable precautions to minimize alterations to the site or existing materials. Restoration of the site is the responsibility of the Client.

## **SECTION 23 UNDERGROUND UTILITIES AND STRUCTURES AND FACILITIES (GEOTECH)**

**23.1** - Public Utilities: AET's sole responsibility under this section will be to contact the state "call before you dig" notification center (e.g. Gopher State One Call in Minnesota), if such an entity exists, for location information of public utilities only. AET shall have no obligation to proceed with the work until Client has fully complied with all the requirements of this Section 23.

**23.2** - Private Utilities and all other Equipment or Facilities: Client will mark or cause to be marked the location of all other Facilities, Equipment and/or Utilities that service or are located on the site including but not limited to private utilities. AET shall be entitled to rely upon the accuracy of all location information supplied by any source including the Client.

**23.3** - Client acknowledges that location data may be incorrect or that some Facilities, Equipment or Utilities may not be capable of location and Client fully acknowledges and accepts this risk and waives any claims against AET for damages or claims arising out of or in any way related to incorrect locations of Utilities, Equipment or Facilities incapable of location.

**23.4** - Client shall waive as against AET and further hold harmless, indemnify and defend AET from all claims, damages, losses, fines, penalties and expenses (including attorney's fees) by any third parties arising out of or related to the following: a) Facilities and utilities that are not shown or vary from the locations shown on any plans or drawings, b) Facilities and utilities that are not located by or vary from the locations marked by Client, governmental or quasi-governmental locator programs, or private utility locating services, or c) any other Facilities or utilities that are not disclosed or vary from locations provided by the Client. The obligation to defend AET shall be independent of the obligation to indemnify and hold harmless AET and shall be with independent counsel acceptable to AET.



# CERTIFICATE OF LIABILITY INSURANCE

1/1/2027

DATE (MM/DD/YYYY)

12/17/2025

THIS CERTIFICATE IS ISSUED AS A MATTER OF INFORMATION ONLY AND CONFERS NO RIGHTS UPON THE CERTIFICATE HOLDER. THIS CERTIFICATE DOES NOT AFFIRMATIVELY OR NEGATIVELY AMEND, EXTEND OR ALTER THE COVERAGE AFFORDED BY THE POLICIES BELOW. THIS CERTIFICATE OF INSURANCE DOES NOT CONSTITUTE A CONTRACT BETWEEN THE ISSUING INSURER(S), AUTHORIZED REPRESENTATIVE OR PRODUCER, AND THE CERTIFICATE HOLDER.

IMPORTANT: If the certificate holder is an ADDITIONAL INSURED, the policy(ies) must have ADDITIONAL INSURED provisions or be endorsed. If SUBROGATION IS WAIVED, subject to the terms and conditions of the policy, certain policies may require an endorsement. A statement on this certificate does not confer rights to the certificate holder in lieu of such endorsement(s).

<b>PRODUCER</b> Lockton Companies, LLC DBA Lockton Insurance Brokers, LLC in CA CA license #0F15767 444 W. 47th St., Ste. 900 Kansas City MO 64112-1906 (816) 960-9000 kcasu@lockton.com	<b>CONTACT NAME:</b> <b>PHONE (A/C No. Ext):</b> <b>FAX (A/C, No):</b> <b>E-MAIL ADDRESS:</b>													
	<table border="1"> <thead> <tr> <th>INSURER(S) AFFORDING COVERAGE</th> <th>NAIC #</th> </tr> </thead> <tbody> <tr> <td>INSURER A: The Phoenix Insurance Company</td> <td>25623</td> </tr> <tr> <td>INSURER B: Travelers Property Casualty Company of America</td> <td>25674</td> </tr> <tr> <td>INSURER C: Continental Casualty Company</td> <td>20443</td> </tr> <tr> <td>INSURER D:</td> <td></td> </tr> <tr> <td>INSURER E:</td> <td></td> </tr> <tr> <td>INSURER F:</td> <td></td> </tr> </tbody> </table>	INSURER(S) AFFORDING COVERAGE	NAIC #	INSURER A: The Phoenix Insurance Company	25623	INSURER B: Travelers Property Casualty Company of America	25674	INSURER C: Continental Casualty Company	20443	INSURER D:		INSURER E:		INSURER F:
INSURER(S) AFFORDING COVERAGE	NAIC #													
INSURER A: The Phoenix Insurance Company	25623													
INSURER B: Travelers Property Casualty Company of America	25674													
INSURER C: Continental Casualty Company	20443													
INSURER D:														
INSURER E:														
INSURER F:														
<b>INSURED</b> 1562985 AMERICAN ENGINEERING TESTING, INC. 550 CLEVELAND AVE. N ST. PAUL, MN 55114-1804														

**COVERAGES**      **CERTIFICATE NUMBER:** 22217726      **REVISION NUMBER:** XXXXXXXX

THIS IS TO CERTIFY THAT THE POLICIES OF INSURANCE LISTED BELOW HAVE BEEN ISSUED TO THE INSURED NAMED ABOVE FOR THE POLICY PERIOD INDICATED. NOTWITHSTANDING ANY REQUIREMENT, TERM OR CONDITION OF ANY CONTRACT OR OTHER DOCUMENT WITH RESPECT TO WHICH THIS CERTIFICATE MAY BE ISSUED OR MAY PERTAIN, THE INSURANCE AFFORDED BY THE POLICIES DESCRIBED HEREIN IS SUBJECT TO ALL THE TERMS, EXCLUSIONS AND CONDITIONS OF SUCH POLICIES. LIMITS SHOWN MAY HAVE BEEN REDUCED BY PAID CLAIMS.

INSR LTR	TYPE OF INSURANCE	ADDL INSD	SUBR WVD	POLICY NUMBER	POLICY EFF (MM/DD/YYYY)	POLICY EXP (MM/DD/YYYY)	LIMITS
A	<input checked="" type="checkbox"/> COMMERCIAL GENERAL LIABILITY <input type="checkbox"/> CLAIMS-MADE <input checked="" type="checkbox"/> OCCUR <input checked="" type="checkbox"/> CONT. LIAB/XCU GEN'L AGGREGATE LIMIT APPLIES PER: <input checked="" type="checkbox"/> POLICY <input type="checkbox"/> PRO-JECT <input type="checkbox"/> LOC OTHER:	N	N	P-630-0E963389-PHX-26	1/1/2026	1/1/2027	EACH OCCURRENCE \$ 2,000,000 DAMAGE TO RENTED PREMISES (Ea occurrence) \$ 1,000,000 MED EXP (Any one person) \$ 25,000 PERSONAL & ADV INJURY \$ 2,000,000 GENERAL AGGREGATE \$ 4,000,000 PRODUCTS - COMP/OP AGG \$ 4,000,000 \$
B	<input checked="" type="checkbox"/> AUTOMOBILE LIABILITY <input checked="" type="checkbox"/> ANY AUTO <input type="checkbox"/> OWNED AUTOS ONLY <input type="checkbox"/> SCHEDULED AUTOS <input type="checkbox"/> HIRED AUTOS ONLY <input type="checkbox"/> NON-OWNED AUTOS ONLY	N	N	810-B8961693-26-43-G	1/1/2026	1/1/2027	COMBINED SINGLE LIMIT (Ea accident) \$ 2,000,000 BODILY INJURY (Per person) \$ XXXXXXXX BODILY INJURY (Per accident) \$ XXXXXXXX PROPERTY DAMAGE (Per accident) \$ XXXXXXXX \$ XXXXXXXX
B	<input checked="" type="checkbox"/> UMBRELLA LIAB <input checked="" type="checkbox"/> OCCUR <input type="checkbox"/> EXCESS LIAB <input type="checkbox"/> CLAIMS-MADE DED   RETENTION \$	N	N	CUP-C0212610-26-43	1/1/2026	1/1/2027	EACH OCCURRENCE \$ 5,000,000 AGGREGATE \$ 5,000,000 \$ XXXXXXXX
B	<input checked="" type="checkbox"/> WORKERS COMPENSATION AND EMPLOYERS' LIABILITY ANY PROPRIETOR/PARTNER/EXECUTIVE OFFICER/MEMBER EXCLUDED? (Mandatory In NH) If yes, describe under DESCRIPTION OF OPERATIONS below	Y/N	N/A	UB-B8969168-26-43-G	1/1/2026	1/1/2027	<input checked="" type="checkbox"/> PER STATUTE <input type="checkbox"/> OTH-ER E.L. EACH ACCIDENT \$ 1,000,000 E.L. DISEASE - EA EMPLOYEE \$ 1,000,000 E.L. DISEASE - POLICY LIMIT \$ 1,000,000
C	<input checked="" type="checkbox"/> PROFESSIONAL LIABILITY INCL. POLLUTION INCIDENT	N	N	ECH254066939	1/1/2026	1/1/2027	EACH CLAIM/AGGREGATE \$5,000,000/\$5,000,000

DESCRIPTION OF OPERATIONS / LOCATIONS / VEHICLES (ACORD 101, Additional Remarks Schedule, may be attached if more space is required)

<b>CERTIFICATE HOLDER</b>	<b>CANCELLATION</b>
22217726 EVIDENCE OF INSURANCE	SHOULD ANY OF THE ABOVE DESCRIBED POLICIES BE CANCELLED BEFORE THE EXPIRATION DATE THEREOF, NOTICE WILL BE DELIVERED IN ACCORDANCE WITH THE POLICY PROVISIONS.  AUTHORIZED REPRESENTATIVE 

## Request for Taxpayer Identification Number and Certification

Go to [www.irs.gov/FormW9](http://www.irs.gov/FormW9) for instructions and the latest information.

**Give form to the  
requester. Do not  
send to the IRS.**

**Before you begin.** For guidance related to the purpose of Form W-9, see *Purpose of Form*, below.

<b>Print or type.</b> See <i>Specific Instructions</i> on page 3.	<p><b>1</b> Name of entity/individual. An entry is required. (For a sole proprietor or disregarded entity, enter the owner's name on line 1, and enter the business/disregarded entity's name on line 2.)</p> <p><b>AMERICAN ENGINEERING TESTING, INC.</b></p> <p><b>2</b> Business name/disregarded entity name, if different from above.</p>
	<p><b>3a</b> Check the appropriate box for federal tax classification of the entity/individual whose name is entered on line 1. Check only <b>one</b> of the following seven boxes.</p> <p> <input type="checkbox"/> Individual/sole proprietor                    <input type="checkbox"/> C corporation                    <input checked="" type="checkbox"/> S corporation                    <input type="checkbox"/> Partnership                    <input type="checkbox"/> Trust/estate  <input type="checkbox"/> LLC. Enter the tax classification (C = C corporation, S = S corporation, P = Partnership) _____  <b>Note:</b> Check the "LLC" box above and, in the entry space, enter the appropriate code (C, S, or P) for the tax classification of the LLC, unless it is a disregarded entity. A disregarded entity should instead check the appropriate box for the tax classification of its owner.  <input type="checkbox"/> Other (see instructions) _____             </p> <p><b>3b</b> If on line 3a you checked "Partnership" or "Trust/estate," or checked "LLC" and entered "P" as its tax classification, and you are providing this form to a partnership, trust, or estate in which you have an ownership interest, check this box if you have any foreign partners, owners, or beneficiaries. See instructions _____ <input type="checkbox"/></p>
	<p><b>4</b> Exemptions (codes apply only to certain entities, not individuals; see instructions on page 3):</p> <p>Exempt payee code (if any) _____</p> <p>Exemption from Foreign Account Tax Compliance Act (FATCA) reporting code (if any) _____</p> <p style="text-align: right;"><i>(Applies to accounts maintained outside the United States.)</i></p>
	<p><b>5</b> Address (number, street, and apt. or suite no.). See instructions.</p> <p><b>550 CLEVELAND AVENUE</b></p> <p><b>6</b> City, state, and ZIP code</p> <p><b>ST. PAUL, MN 55114</b></p> <p><b>7</b> List account number(s) here (optional)</p>
	<p>Requester's name and address (optional)</p>

**Part I Taxpayer Identification Number (TIN)**

Enter your TIN in the appropriate box. The TIN provided must match the name given on line 1 to avoid backup withholding. For individuals, this is generally your social security number (SSN). However, for a resident alien, sole proprietor, or disregarded entity, see the instructions for Part I, later. For other entities, it is your employer identification number (EIN). If you do not have a number, see *How to get a TIN*, later.

**Note:** If the account is in more than one name, see the instructions for line 1. See also *What Name and Number To Give the Requester* for guidelines on whose number to enter.

<b>Social security number</b>									
<b>or</b>									
<b>Employer identification number</b>									
4	1	-	0	9	7	7	5	2	1

**Part II Certification**

Under penalties of perjury, I certify that:

- The number shown on this form is my correct taxpayer identification number (or I am waiting for a number to be issued to me); and
- I am not subject to backup withholding because (a) I am exempt from backup withholding, or (b) I have not been notified by the Internal Revenue Service (IRS) that I am subject to backup withholding as a result of a failure to report all interest or dividends, or (c) the IRS has notified me that I am no longer subject to backup withholding; and
- I am a U.S. citizen or other U.S. person (defined below); and
- The FATCA code(s) entered on this form (if any) indicating that I am exempt from FATCA reporting is correct.

**Certification instructions.** You must cross out item 2 above if you have been notified by the IRS that you are currently subject to backup withholding because you have failed to report all interest and dividends on your tax return. For real estate transactions, item 2 does not apply. For mortgage interest paid, acquisition or abandonment of secured property, cancellation of debt, contributions to an individual retirement arrangement (IRA), and, generally, payments other than interest and dividends, **you are not required to sign the certification**, but you must provide your correct TIN. See the instructions for Part II, later.

<b>Sign Here</b>	Signature of U.S. person <i>Phil Chwialkowski</i>	Date <i>1/1/2026</i>
------------------	--	-------------------------

**General Instructions**

Section references are to the Internal Revenue Code unless otherwise noted.

**Future developments.** For the latest information about developments related to Form W-9 and its instructions, such as legislation enacted after they were published, go to [www.irs.gov/FormW9](http://www.irs.gov/FormW9).

**What's New**

Line 3a has been modified to clarify how a disregarded entity completes this line. An LLC that is a disregarded entity should check the appropriate box for the tax classification of its owner. Otherwise, it should check the "LLC" box and enter its appropriate tax classification.

New line 3b has been added to this form. A flow-through entity is required to complete this line to indicate that it has direct or indirect foreign partners, owners, or beneficiaries when it provides the Form W-9 to another flow-through entity in which it has an ownership interest. This change is intended to provide a flow-through entity with information regarding the status of its indirect foreign partners, owners, or beneficiaries, so that it can satisfy any applicable reporting requirements. For example, a partnership that has any indirect foreign partners may be required to complete Schedules K-2 and K-3. See the Partnership Instructions for Schedules K-2 and K-3 (Form 1065).

**Purpose of Form**

An individual or entity (Form W-9 requester) who is required to file an information return with the IRS is giving you this form because they