

WATERFRONT VILLAGE THIRD ADDITION

CITY OF RAMSEY
COUNTY OF ANOKA
SEC. 28, T. 32, R. 25

KNOW ALL PERSONS BY THESE PRESENTS: That Centra Ramsey Waterfront Village 1, LLC, a Minnesota limited liability company, owner of the following described property:

Outlot C, WATERFRONT VILLAGE SECOND ADDITION, Anoka County, Minnesota

Has caused the same to be surveyed and platted as WATERFRONT VILLAGE THIRD ADDITION and does hereby dedicate to the public for public use the drainage and utility easements as created on this plat.

In witness whereof said Centra Ramsey Waterfront Village 1, LLC, a Minnesota limited liability company, has caused these presents to be signed by its proper officer this _____ day of _____, 20____.

Centra Ramsey Waterfront Village 1, LLC

By: _____ the _____

STATE OF _____
COUNTY OF _____

This instrument was acknowledged before me on _____ day of _____, 20____,

by _____ the _____, of Centra Ramsey Waterfront Village 1, LLC, a Minnesota limited liability company, on behalf of the limited liability company.

County, _____ Printed Name
My commission expires _____

I, Marcus F. Hampton do hereby certify that this plat was prepared by me or under my direct supervision; that I am a duly Licensed Land Surveyor in the State of Minnesota; that this plat is a correct representation of the boundary survey; that all mathematical data and labels are correctly designated on this plat; that all monuments depicted on this plat have been, or will be correctly set within one year; that all water boundaries and wet lands, as defined in Minnesota Statutes, Section 505.01, Subd. 3, as of the date of this certificate are shown and labeled on this plat; and all public ways are shown and labeled on this plat.

Dated this _____ day of _____, 20____

Marcus F. Hampton, Licensed Land Surveyor, Minnesota License No. 47481

STATE OF MINNESOTA
COUNTY OF _____

This instrument was acknowledged before me on this _____ day of _____, 20____
by Marcus F. Hampton.

(Signature)

(Print Name)

County, _____
My commission expires _____

CITY COUNCIL, CITY OF RAMSEY, MINNESOTA

This plat of WATERFRONT VILLAGE THIRD ADDITION was approved and accepted by the City Council of the City of Ramsey, Minnesota at a regular meeting thereof held this _____ day of _____, 20____, and said plat is in compliance with the provisions of Minnesota Statutes, Section 505.03, Subd. 2. City Council, City of Ramsey, Minnesota

By: _____ Mayor _____ Clerk

ANOKA COUNTY SURVEYOR

I hereby certify that in accordance with Minnesota Statutes, Section 505.021, Subd. 11, this plat has been reviewed and approved this _____ day of _____, 20____.

David M. Ziegler, Anoka County Surveyor

ANOKA COUNTY AUDITOR/TREASURER

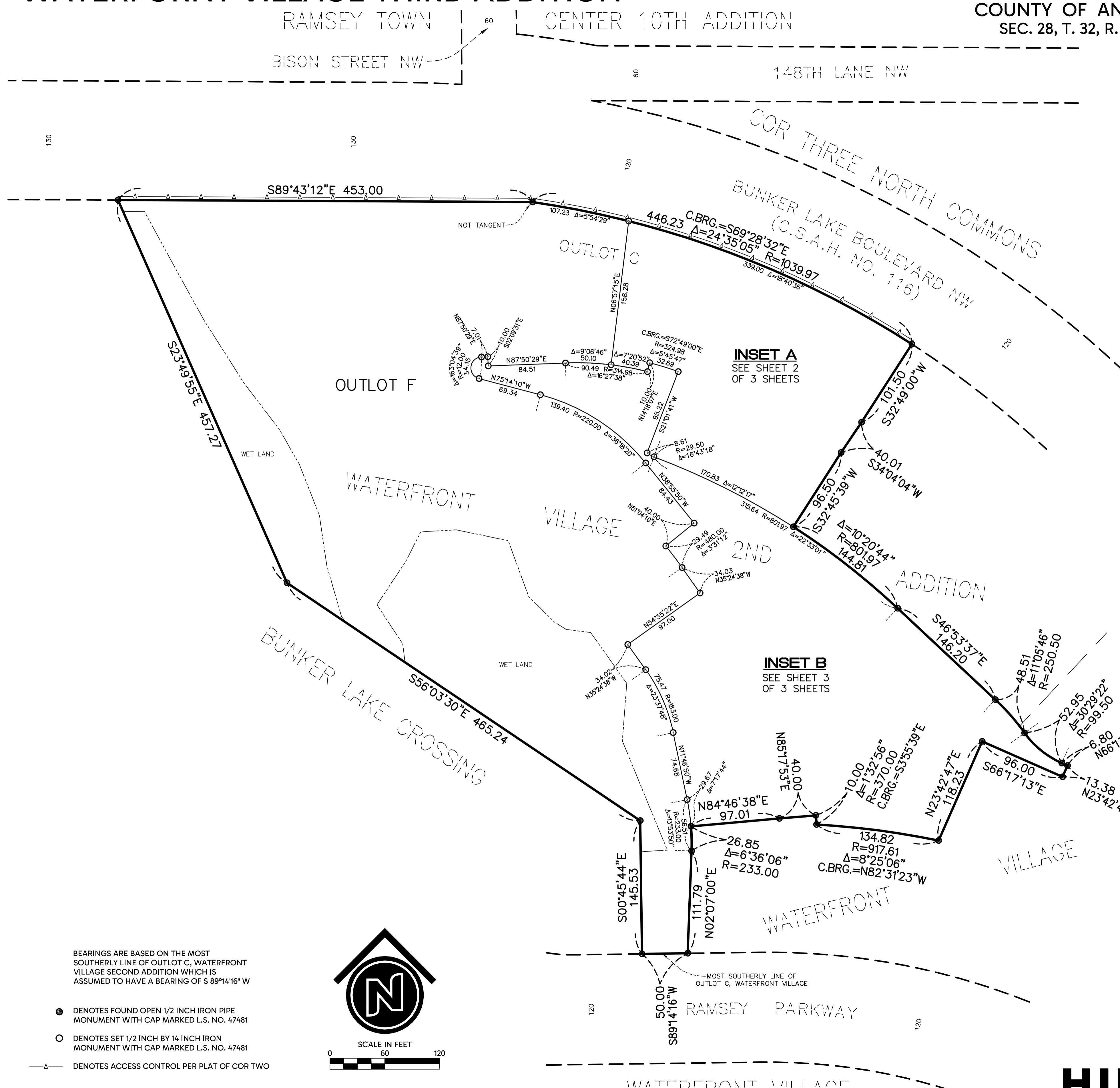
Pursuant to Minnesota Statutes, Section 505.021, Subd. 9, taxes payable in the year 20____ on the land hereinbefore described have been paid. Also, pursuant to Minnesota Statutes, Section 272.12, there are no delinquent taxes and transfer entered this _____ day of _____, 20____.

By: _____ Property Tax Administrator By: _____ Deputy

COUNTY RECORDER/REGISTRAR OF TITLES, COUNTY OF ANOKA, STATE OF MINNESOTA

I hereby certify that this plat of WATERFRONT VILLAGE THIRD ADDITION was filed in the office of the County Recorder/Registrar of Titles for public record on this _____ day of _____, 20____, at _____ o'clock _____ M. and was duly recorded as Document Number _____.

By: _____ County Recorder/Registrar of Titles By: _____ Deputy



- DENOTES FOUND OPEN 1/2 INCH IRON PIPE MONUMENT WITH CAP MARKED L.S. NO. 47481
- DENOTES SET 1/2 INCH BY 14 INCH IRON MONUMENT WITH CAP MARKED L.S. NO. 47481
- ▲— DENOTES ACCESS CONTROL PER PLAT OF COR TWO

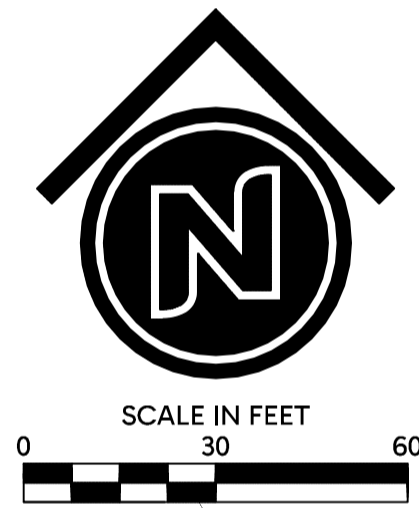
INSET A
SEE SHEET 2
OF 3 SHEETS

INSET B
SEE SHEET 3
OF 3 SHEETS

WATERFRONT VILLAGE THIRD ADDITION

CITY OF RAMSEY
COUNTY OF ANOKA
SEC. 28, T. 32, R. 25

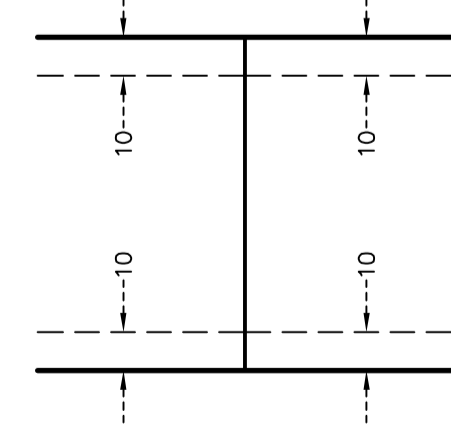
INSET B



BEARINGS ARE BASED ON THE MOST SOUTHERLY LINE OF OUTLOT C, WATERFRONT VILLAGE SECOND ADDITION WHICH IS ASSUMED TO HAVE A BEARING OF S 89°14'16" W

- DENOTES FOUND OPEN 1/2 INCH IRON PIPE MONUMENT WITH CAP MARKED L.S. NO. 47481
- DENOTES SET 1/2 INCH BY 14 INCH IRON MONUMENT WITH CAP MARKED L.S. NO. 47481

DRAINAGE AND UTILITY EASEMENTS ARE SHOWN THUS:



DRAINAGE AND UTILITY EASEMENTS BEING 10 FEET IN WIDTH, UNLESS OTHERWISE INDICATED, ADJOINING LOT LINES, ADJOINING FRONT AND REAR LOT LINES, AS SHOWN ON THIS PLAN.

