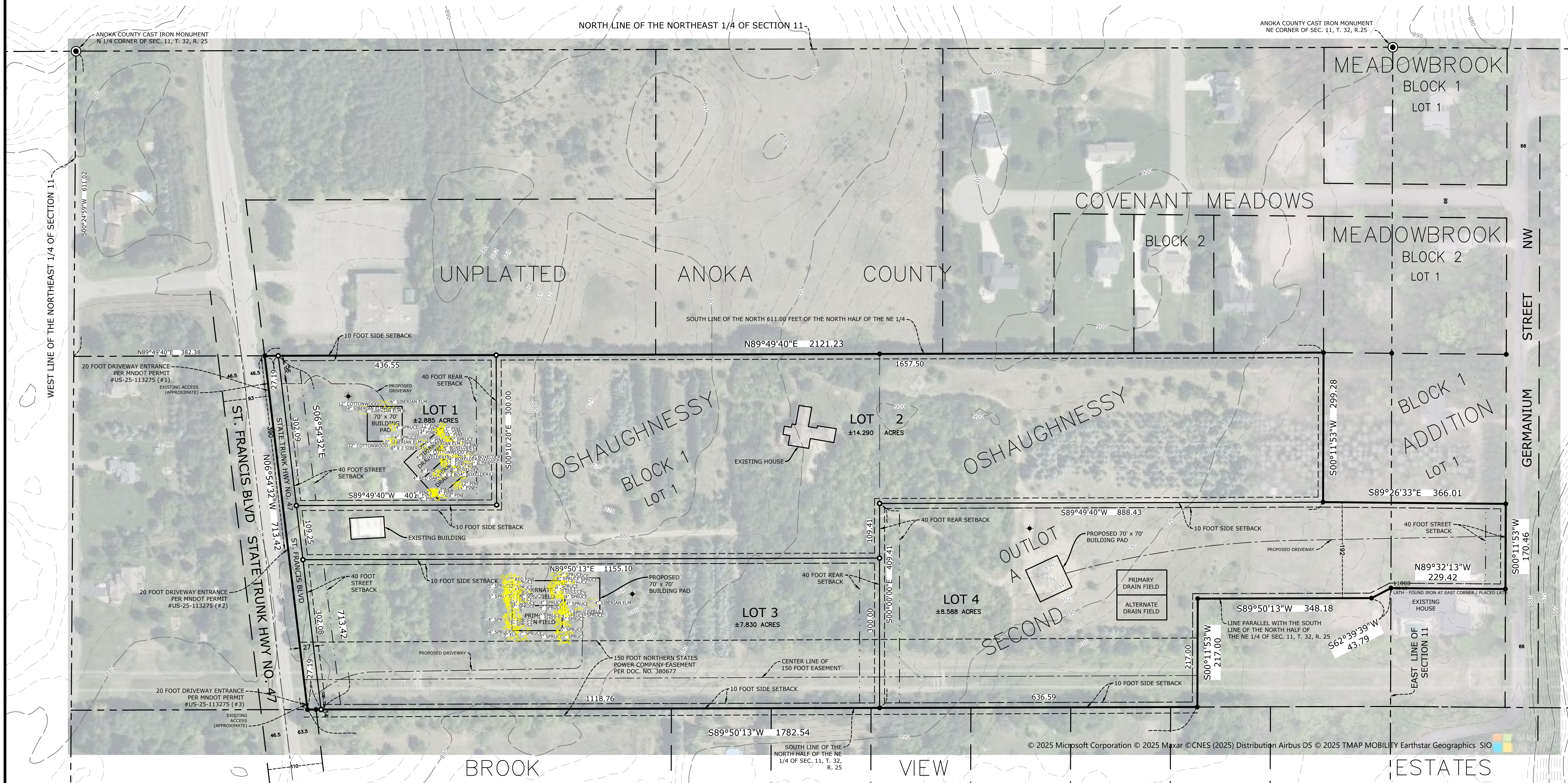


TREE INVENTORY

OSHAUGHNESSY THIRD ADDITION

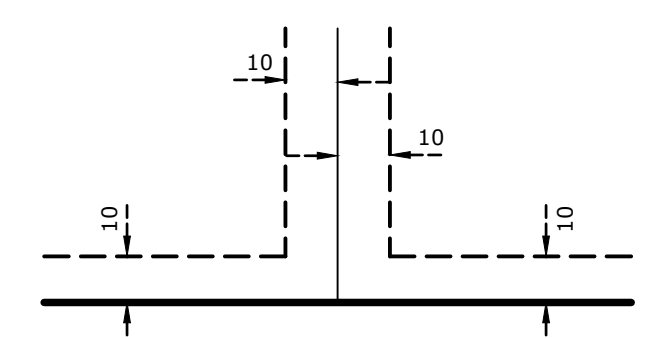
C.R. DOC. NO _____



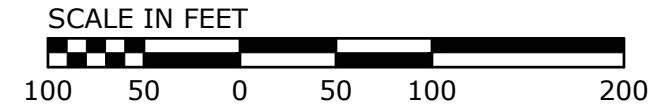
- ◆ Denotes Proposed Well Location
- Denotes Anoka County cast iron monument found
- Denotes found iron monument as shown
- Denotes a 1/2 inch by 14 inch iron pipe set and marked by License No. 13637

Bearings are based on West line of the Northeast Quarter of Section 11, Township 32, Range 25, having an assumed bearing of S00°24'59"W

DRAINAGE AND UTILITY EASEMENTS ARE SHOWN THUS:
(NO SCALE)



Being 10 feet in width when adjoining side lot lines, unless otherwise indicated, and being 10 feet in width when adjoining public ways, unless otherwise indicated, as shown on this plat.



HOUSTON
engineering, inc.

© 2025 Microsoft Corporation © 2025 Maxar © CNES (2025) Distribution Airbus DS © 2025 TMAP MOBILITY Earthstar Geographics SIO