

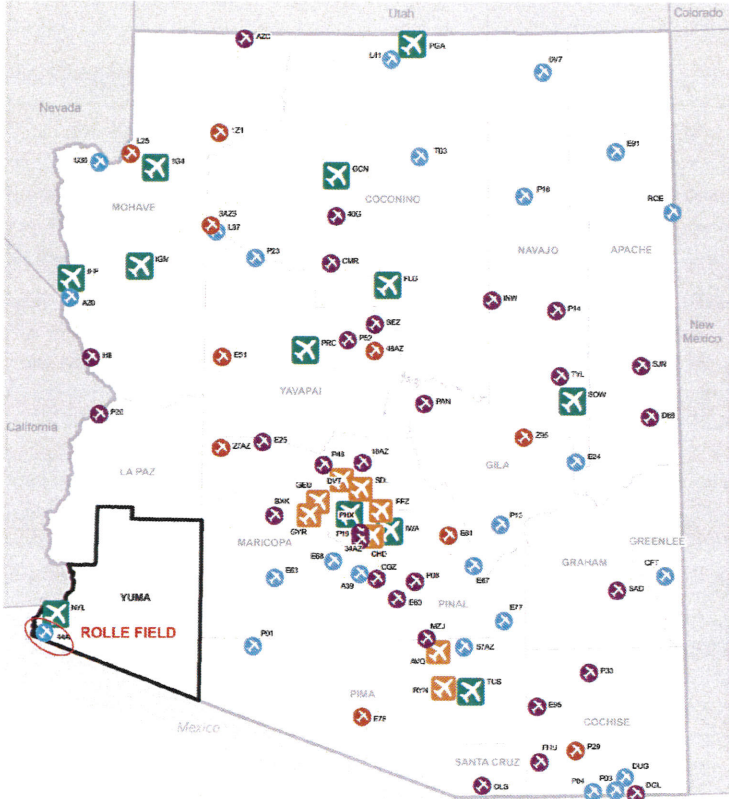
AIRPORT LAYOUT PLAN



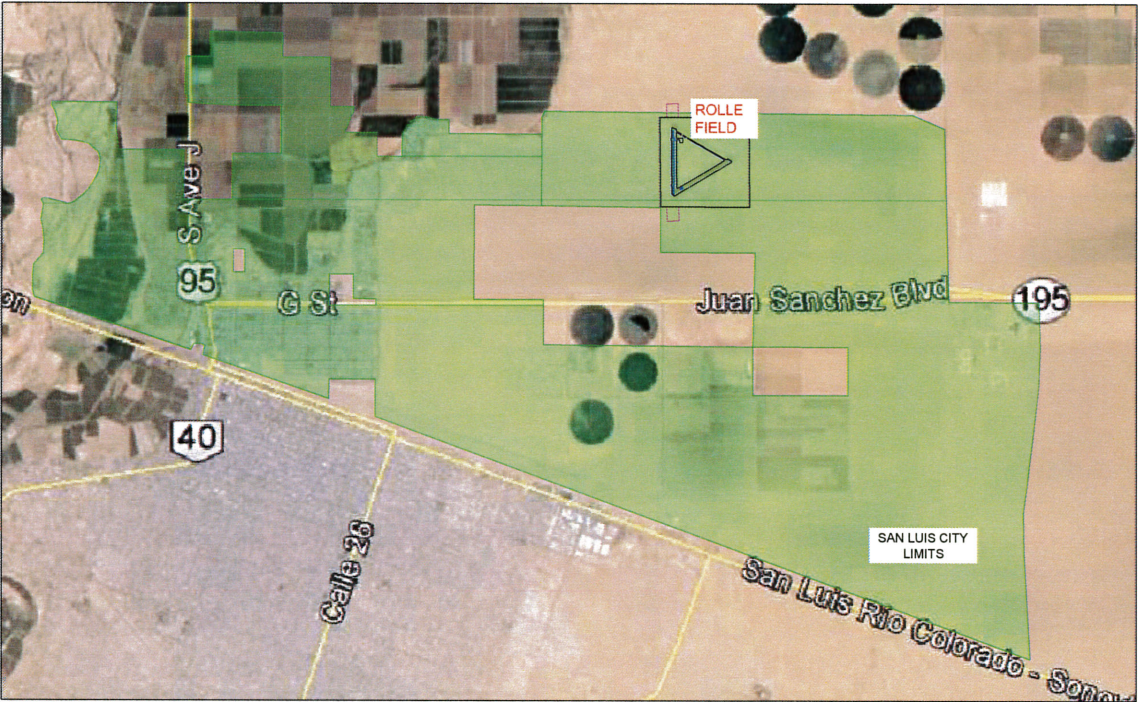
ROLLE FIELD

SAN LUIS, ARIZONA

PREPARED FOR
YUMA COUNTY AIRPORT
AUTHORITY
MAY, 2015



LOCATION MAP



VICINITY MAP

ADOT APPROVAL

MICHAEL KLEIN
NAME
[Signature]
SIGNATURE
AERONAUTICS GROUP MANAGER
TITLE
May 5, 2015
DATE

SHEET TITLE

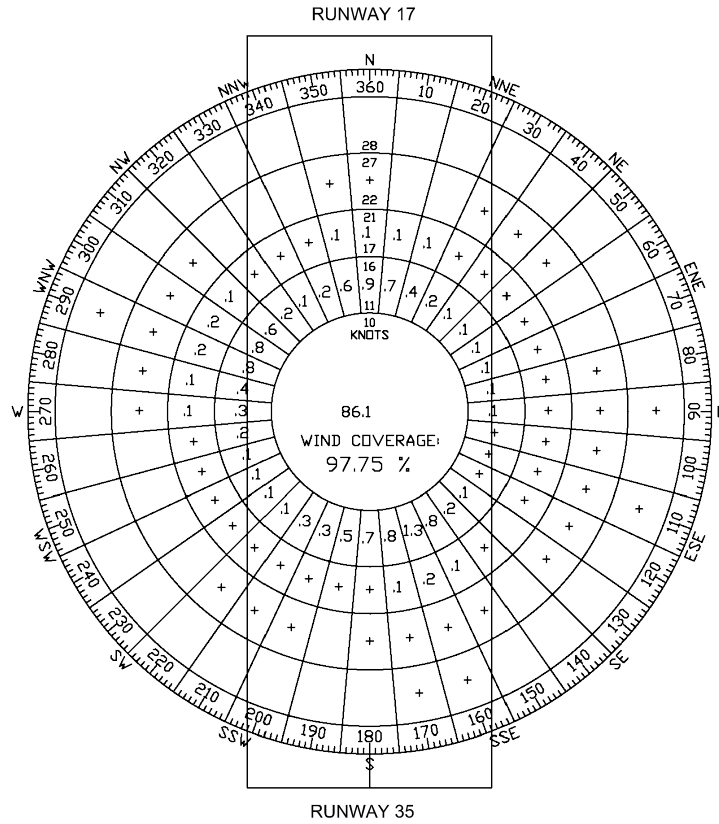
TITLE SHEET.....	1
DATA SHEET.....	2
AIRPORT LAYOUT PLAN.....	3
AIRPORT AIRSPACE DRAWING.....	4
INNER APPROACH SURFACE DRAWING RWY 17.....	5
INNER APPROACH SURFACE DRAWING RW 35.....	6
TERMINAL AREA DRAWING.....	7
LAND USE DRAWING.....	8
EXHIBIT "A" - AIRPORT PROPERTY MAP.....	9
PUBLIC AIRPORT DISCLOSURE MAP.....	10

SHEET NO. REVISION DATE

SPONSOR APPROVAL

GLADYS WIGGINS
NAME
[Signature]
SIGNATURE
AIRPORT DIRECTOR
TITLE
May 5, 2015
DATE

REVISIONS			
NO.	DESCRIPTION	DATE	BY



ROLLE FIELD ALL - WEATHER WIND ROSE COVERAGE

WIND COVERAGE		
RUNWAY	12 MPH (10.5 KNTS)	15 MPH (13 KNTS)
17-35	95.99%	97.75%

SOURCE: HISTORICAL DATA COLLECTED AT YUMA INTERNATIONAL AIRPORT BETWEEN 2008 AND 2012.



RUNWAY DATA			
	RUNWAY 17-35		
	EXISTING	ULTIMATE	
RUNWAY DESIGN CODE (RDC)	17 B / I (S) / VIS	17 B / II / VIS	
APPROACH REFERENCE CODE (APRC)	35 B / I (S) / VIS	35 B / II / VIS	
DEPARTURE REFERENCE CODE (DRRC)	17 B / I (S)	17 B / II	
CRITICAL AIRCRAFT	AIRCRAFT	Cessna 182	Beech Super King Air 200
	WINGSPAN	36.1'	54.5'
	UNDERCARRIAGE WIDTH	9.0'	17.17'
	APPROACH SPEED	92 kts	100 kts
	MAX. TAKEOFF WT. (lbs.)	2,800	12,500
PAVEMENT STRENGTH & MATERIAL TYPE	TYPE	ASPHALT	ASPHALT
	STRENGTH (1,000#) S/D/DT	8 / - / -	12.5 / 30 / -
	STRENGTH PCN	8	12.5
EFFECTIVE RUNWAY GRADIENT AND MAXIMUM GRADE	SURFACE TREATMENT	NONE	NONE
	EFFECTIVE GRADIENT %	0.01%	0.01%
	MAXIMUM GRADE %	0.01%	0.01%
PERCENT WIND COVERAGE (ALL WEATHER)	A-I & B-I 10.5 KNOTS	95.99%	95.99%
	A-II & B-II 13 KNOTS	97.75%	97.75%
RUNWAY LENGTH AND WIDTH	RUNWAY LENGTH	2,800'	4,520'
	RUNWAY WIDTH	60'	75'
RUNWAY SAFETY AREA (RSA) - LENGTH BEYOND RUNWAY END	ACTUAL AND ULTIMATE	17 240'	17 300'
		35 240'	35 300'
RUNWAY SAFETY AREA WIDTH		120'	150'
RUNWAY TRUE BEARING	N 0°7' 58.11" W		
RUNWAY 17 END COORDINATES	LATITUDE	32°31' 12.52" N	32°31' 20.97" N
	LONGITUDE	114°41' 54.38" W	114°41' 54.39" W
RUNWAY 35 END COORDINATES	LATITUDE	32°30' 44.81" N	32°30' 36.25" N
	LONGITUDE	114°41' 53.98" W	114°41' 53.82" W
RUNWAY LIGHTING TYPE	None MEDIUM INTENSITY		
RUNWAY PROTECTION ZONE (RPZ) DIMENSIONS	17	1000 X 250 X 450	17 1000 X 500 X 700
	35	1000 X 250 X 450	35 1000 X 500 X 700
RUNWAY MARKING TYPE	17	VISUAL	17 NON-PRECISION
	35	VISUAL	35 NON-PRECISION
14 CFR PART 77 APPROACH CATEGORY	17	20:1	17 20:1
	35	20:1	35 20:1
14 CFR PART 77 APPROACH TYPES	17	VISUAL	17 VISUAL
	35	VISUAL	35 VISUAL
VISIBILITY MINIMUMS	17	> 1 MI.	17 > 1 MI.
	35	> 1 MI.	35 > 1 MI.
TYPE OF AERONAUTICAL SURVEY REQUIRED FOR APPROACH (VGS OR NVGS**)	17	NVGS*	17 NVGS*
	35	NVGS*	35 NVGS*
40:1 RUNWAY DEPARTURE SURFACE	17	N/A	17 N/A
	35	N/A	35 N/A
RUNWAY OBJECT FREE AREA (ROFA) - LENGTH BEYOND RUNWAY END	17	240'	17 300'
	35	240'	35 300'
OBJECT FREE AREA WIDTH		400'	500'
RUNWAY OBSTACLE FREE ZONE (ROFZ) - LENGTH BEYOND RUNWAY END	17	200'	17 200'
	35	200'	35 200'
OBSTACLE FREE ZONE WIDTH		250'	400'
THRESHOLD SITING SURFACE (TSS) - NO TSS PENETRATIONS	TSS APPROACH SURFACES	17 20:1	17 20:1
	TSS DEPARTURE SURFACES	35 20:1	35 20:1
VISUAL AND INSTRUMENT NAVAIDS	INSTRUMENT NAVAIDS	17 NONE	17 RNAV (GPS) CIRCLING
	VISUAL AIDS	35 NONE	35 NONE
RUNWAY END ELEVATIONS	17	164.00'	17 163.91'
	35	164.05'	35 164.14'
RUNWAY TOUCHDOWN ZONE ELEVATIONS (TDZE)	17	-	17 -
	35	-	35 -
RUNWAY HIGH POINT		166.83'	166.83'
RUNWAY LOW POINT		163.97'	163.91'
DISTANCE from RWY. CL to PARALLEL TWY. CL		-	240'
DISTANCE from RWY. CL to PARKED AIRCRAFT		344'	370'
TAXIWAY DATA - SEE TAXIWAY DATA TABLE FOR TAXIWAY DESIGN GROUP AND DESIGN CRITERIA			
* - NVGS SURVEYS MUST BE SUPPLEMENTED WITH THE FIRST 10,200 FEET OF THE VGS FOR CIRCLING AND NON-PRECISION INSTRUMENT APPROACHES			

AIRPORT DATA		
	EXISTING	ULTIMATE
AIRPORT REFERENCE CODE (ARC)	B / I (S)	B / II
MEAN MAX TEMP. (July)	107° F	107° F
AIRPORT ELEVATION (NAVD 88)	166.4' ABOVE MSL	166.4' ABOVE MSL
AIRPORT AND TERMINAL NAVIGATIONAL AIDS*	NONE	RNAV (GPS), PAPI-2
AIRPORT REFERENCE POINT (NAD 83)	Latitude	32° 30' 58.56"
	Longitude	114° 41' 64.15"
MISCELLANEOUS FACILITIES	Segmented Circle and Wind Cone	MIRL, MITL, Lighted Wind Cone
CRITICAL AIRCRAFT (C-II EXISTING & ULTIMATE)	CESSNA 182	BEECH SUPER KING AIR 200
AIRPORT MAGNETIC VARIATION, WMM 2010 NOAA WEBSITE	OCTOBER 20, 2014	Changing by .1 minutes West per year.
NPIAS SERVICE LEVEL	NONE	GA
AZ STATE SYSTEMS PLAN SERVICE ROLE	GA Community	GA Community

TAXIWAY DATA						
	T/W A		T/W A1		T/W A2, A3, A4	
	EXISTING	ULTIMATE	EXISTING	ULTIMATE	EXISTING	ULTIMATE
WIDTH	-	35'	35'	35'	-	35'
AIRCRAFT DESIGN GROUP	-	B-II	B-II	B-II	-	B-II
T/W DESIGN GROUP (TDG)	-	2	2	2	-	2
PAVEMENT STRENGTH	-	12.5k SWL	8k SWL	12.5k SWL	-	12.5k SWL
TAXIWAY EDGE SAFETY MARGIN	-	7.5'	7.5'	7.5'	-	7.5'
TAXIWAY SHOULDER WIDTH	-	15'	15'	15'	-	15'
T/W SAFETY AREA WIDTH	-	79'	49'	79'	-	79'
T/W OBJECT FREE AREA WIDTH	-	131'	89'	131'	-	131'
FIXED OR MOVABLE OBJECT	-	57.5'	39.5'	57.5'	-	57.5'
T/W LIGHTING	-	MITL	-	MITL	-	MITL

MODIFICATION TO STANDARDS
NONE REQUIRED

DECLARED DISTANCES RUNWAY 1-19				
DESCRIPTION	EXISTING		ULTIMATE	
	RW 17	RW 35	RW 17	RW 35
TORA	2,800	2,800	4,520	4,520
TODA	2,800	2,800	4,520	4,520
ASDA	2,800	2,800	4,520	4,520
LDA	2,800	2,800	4,520	4,520

TORA - TAKEOFF RUN AVAILABLE
TODA - TAKEOFF DISTANCE AVAILABLE
ASDA - ACCELERATE-STOP DISTANCE AVAILABLE
LDA - LANDING DISTANCE AVAILABLE

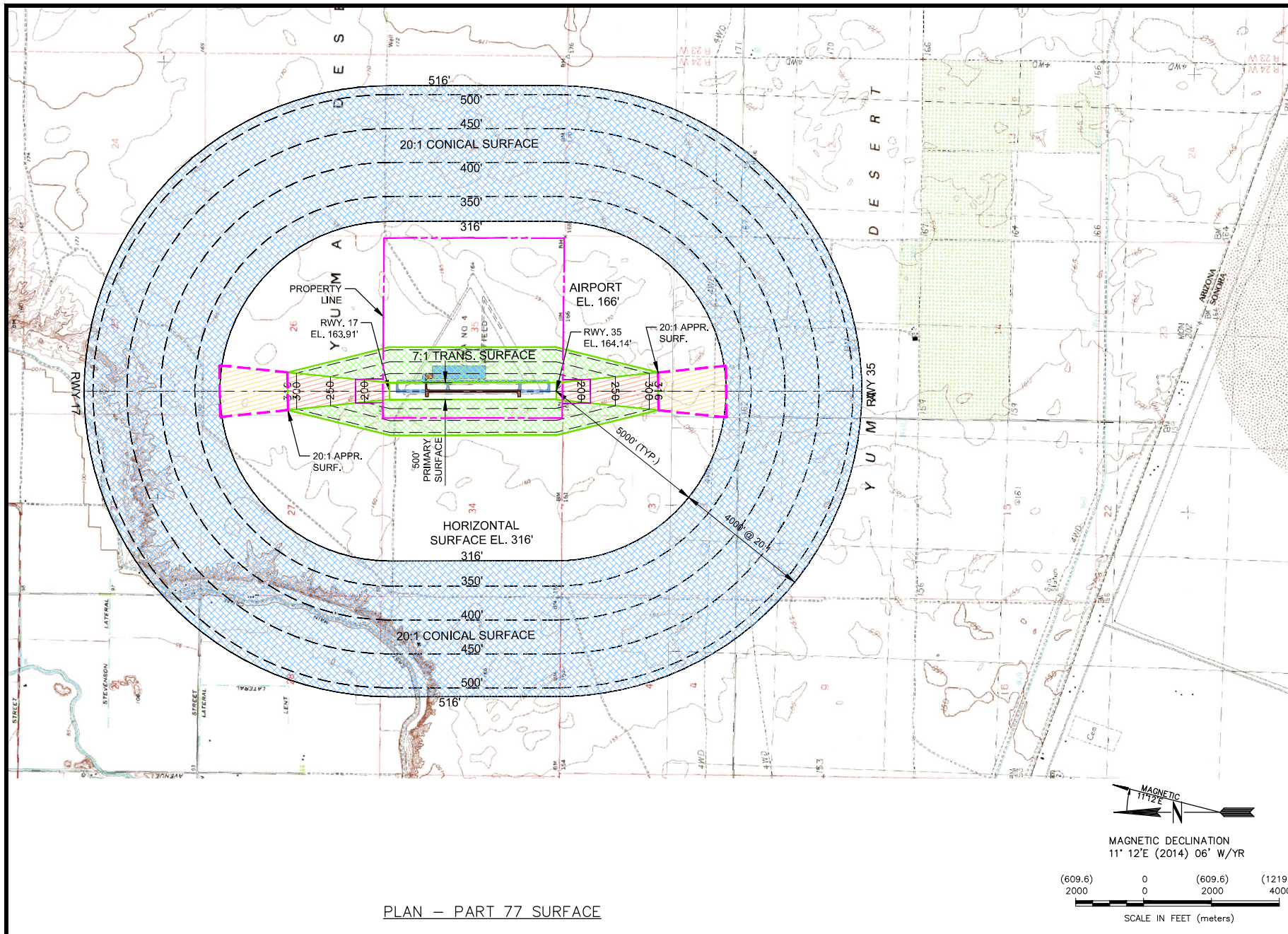
MORRISON MAIRLE, INC.
Engineers Surveyors Scientists Planners
1275 West Washington Street
Suite 108
Tempe, AZ 85281
Phone: (602) 275-2900
Fax: (602) 275-2901

NO.	REVISIONS / SUBMISSIONS	DATE

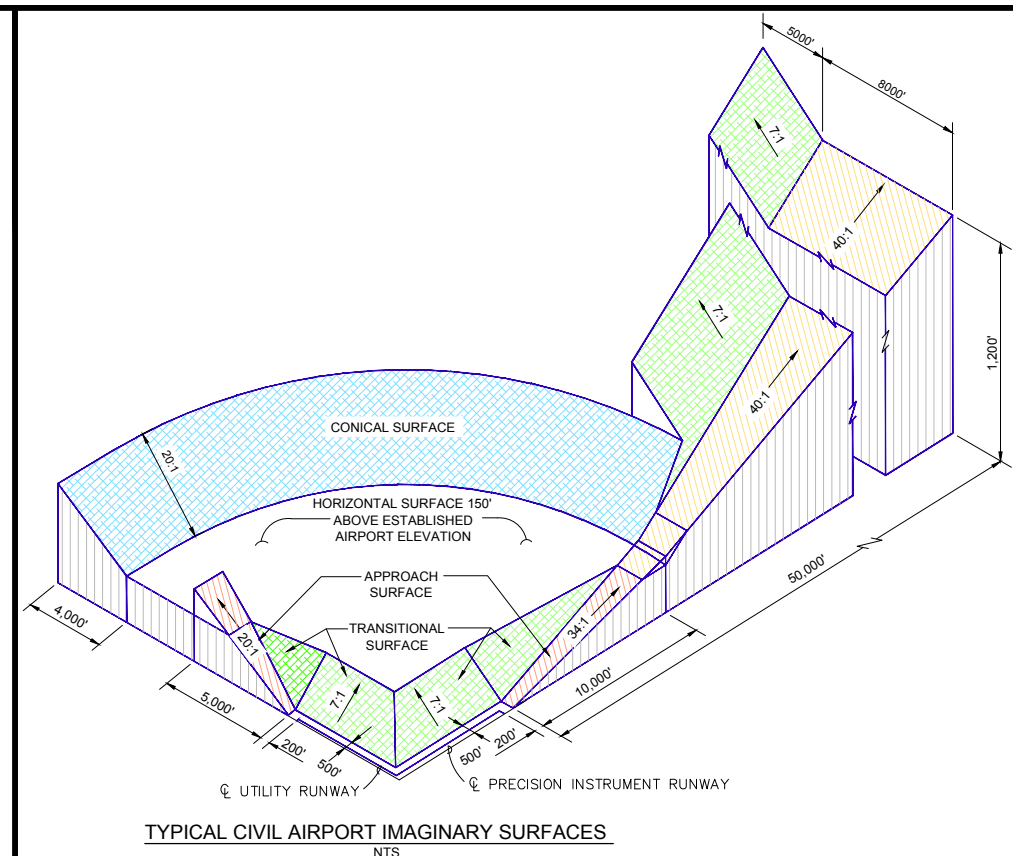
ROLLE FIELD
YUMA COUNTY AIRPORT AUTHORITY
SAN LUIS, ARIZONA
AIRPORT LAYOUT PLAN

Designed by:	JHM
Drawn by:	PVD
Approved by:	JHM
Date:	10/20/14
MMI Project No.:	8788.001

AIRPORT LAYOUT PLAN
AIRPORT DATA



PLAN - PART 77 SURFACE



TYPICAL CIVIL AIRPORT IMAGINARY SURFACES
NTS

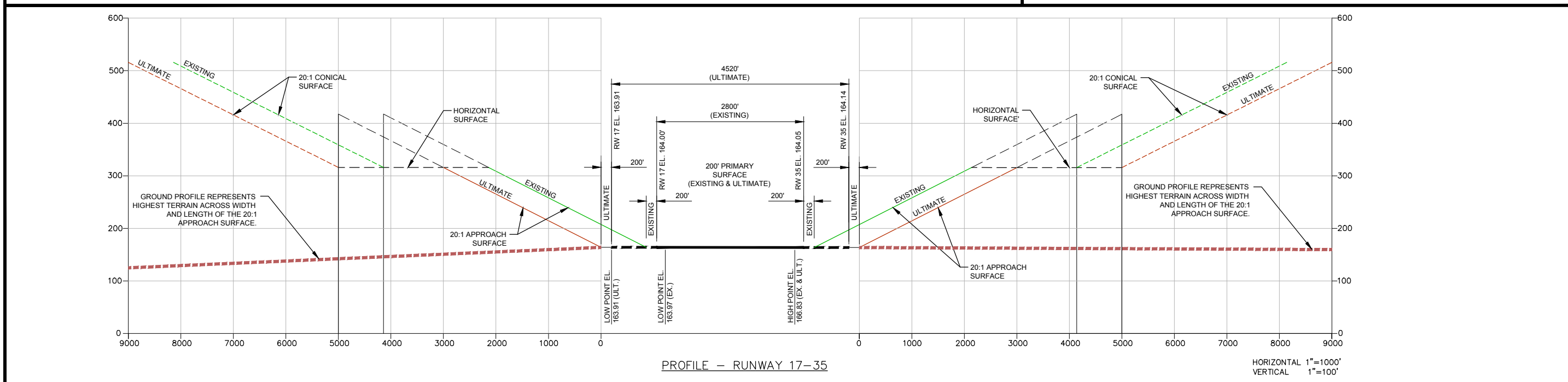
PROFILE - OBSTRUCTIONS						
NO.	DESCRIPTION	PART 77 SURFACE PENETRATION	ELEVATION	PENETRATION(±)		DISPOSITION
				EXISTING	ULTIMATE	

* NO OBSTRUCTIONS IDENTIFIED FOR RUNWAY 17-35

NOTES

- FIFTEEN FEET ADDED TO NON INTERSTATE ROAD ELEVATIONS, SEVENTEEN FEET ADDED TO INTERSTATE ROAD ELEVATIONS. TWENTY-THREE FEET ADDED TO RAILROAD TRACK ELEVATIONS. TRANSITIONAL SURFACE SLOPES ARE 7:1 UNLESS OTHERWISE INDICATED. OBSTRUCTING AREA LIMITS ARE APPROXIMATE.
- FOR CLOSE-IN OBSTRUCTIONS IN THE APPROACH AREAS, REFER TO THE OBSTRUCTION TABLES ON THE INNER PORTION OF THE APPROACH SURFACE DRAWING.
- THE PRIMARY, APPROACH, TRANSITIONAL, HORIZONTAL, AND CONICAL SURFACES ARE PROTECTED BY ZONING.
- OBSTRUCTIONS, CLEARANCES, AND LOCATIONS ARE CALCULATED FROM ULTIMATE RUNWAY END ELEVATIONS AND ULTIMATE APPROACH PROFILES.
- DEPICTION OF FEATURES AND OBJECTS WITHIN THE OUTER PORTION OF THE APPROACH SURFACES, ARE ILLUSTRATED ON THE APPROACH PROFILES.
- DEPICTION OF FEATURES AND OBJECTS WITHIN THE INNER PORTION OF THE APPROACH SURFACES, ARE ILLUSTRATED ON THE RUNWAY APPROACH ZONES.
- EXISTING AND FUTURE HEIGHT AND HAZARD ORDNANCES ARE TO BE AMENDED AND/OR REFERENCED UPON APPROVAL OF UPDATED PART 77 AIRSPACE PLAN.

NO.	REVISIONS/SUBMISSIONS	DATE

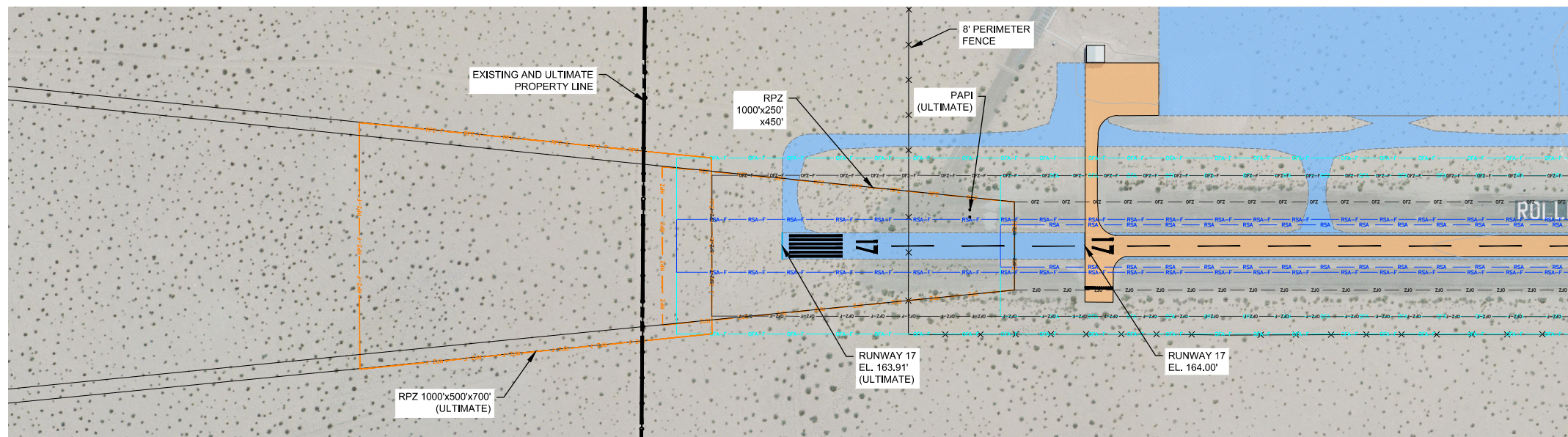


PROFILE - RUNWAY 17-35

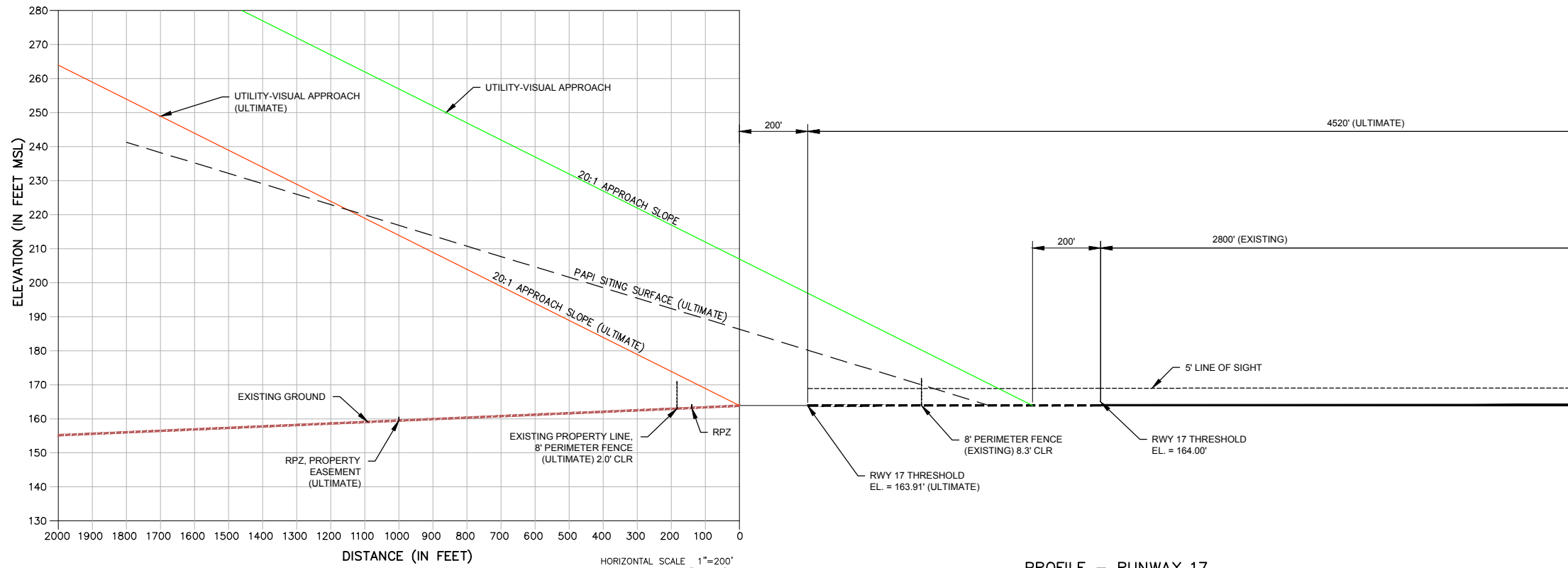
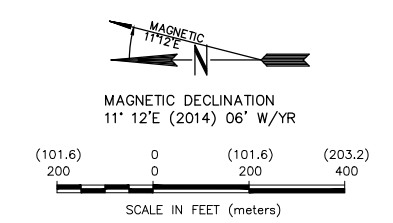
HORIZONTAL 1"=1000'
 VERTICAL 1"=100'

Designed by:	INITIALS
Drawn by:	pyd
Approved by:	INITIALS
Date:	10/20/14
MMI Project No.:	8788.001

AIRPORT LAYOUT PLAN
AIRPORT AIRSPACE DRAWING



PLAN - RUNWAY 17



PROFILE - RUNWAY 17

PROFILE RW 17 - OBSTRUCTIONS *						
NO.	DESCRIPTION	PART 77 SURFACE PENETRATION	ELEVATION	PENETRATION(±)		DISPOSITION
				EXISTING 20:1	ULTIMATE 20:1	

* NO OBSTRUCTIONS IDENTIFIED FOR RUNWAY 17. (SURVEYED 8/29/2013)

ROAD AND APPROACH ELEVATIONS IN RPZ						
RUNWAY 17						
EXISTING			ULTIMATE			
ROAD	APP	VERT. CLEAR.	ROAD	APP	VERT. CLEAR.	

NOTE: ADDED 15' TO HIGHWAY AND 17' INTERSTATE ELEVATIONS.

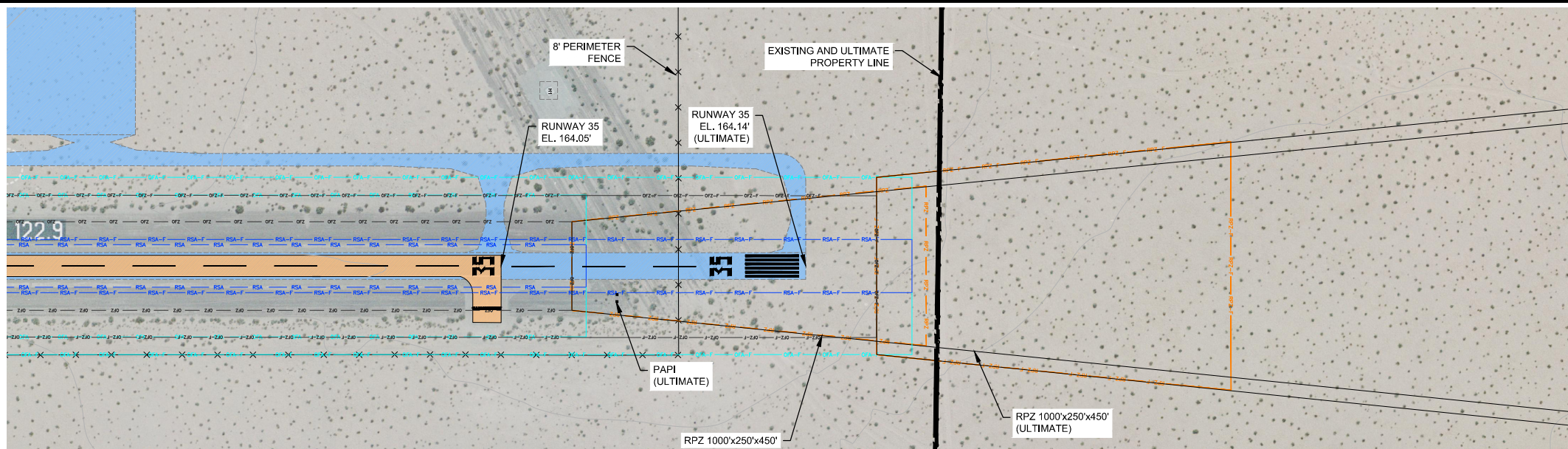
LEGEND		
EXISTING		ULTIMATE
—	—	—
—	—	—
—	—	—
—	—	—
—	—	—
—	—	—

NO.	REVISIONS / SUBMISSIONS	DATE

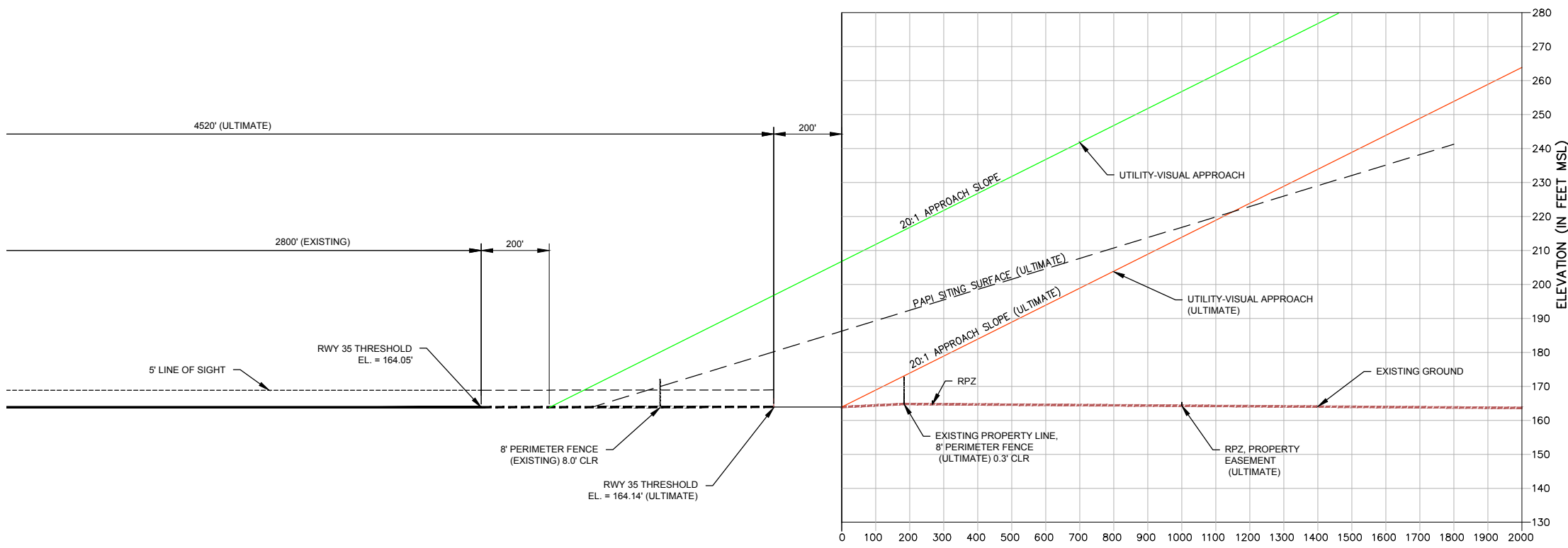
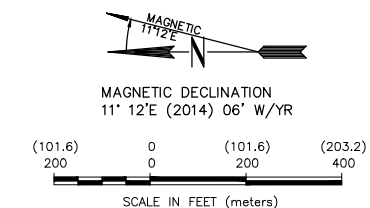
ROLLE FIELD
 YUMA COUNTY AIRPORT AUTHORITY
 SAN LUIS, ARIZONA
 AIRPORT LAYOUT PLAN

Designed by:	INITIALS	pyd
Drawn by:	INITIALS	10/20/14
Approved by:	INITIALS	8788.001
Date:		
MMI Project No.:		

AIRPORT LAYOUT PLAN
 INNER APPROACH SURFACE DRAWING
 RUNWAY 17 END



PLAN - RUNWAY 17



PROFILE - RUNWAY 17

PROFILE RW 35 - OBSTRUCTIONS						
NO.	DESCRIPTION	PART 77 SURFACE PENETRATION	ELEVATION	PENETRATION(s)		DISPOSITION
				EXISTING	ULTIMATE	
				20:1	20:1	

* NO OBSTRUCTIONS IDENTIFIED FOR RUNWAY 35. (SURVEYED 8/20/2013)

ROAD AND APPROACH ELEVATIONS IN RPZ					
RUNWAY 35					
EXISTING			ULTIMATE		
ROAD	APP	VERT. CLEAR.	ROAD	APP	VERT. CLEAR.

NOTE: ADDED 15' TO HIGHWAY AND 17' INTERSTATE ELEVATIONS.

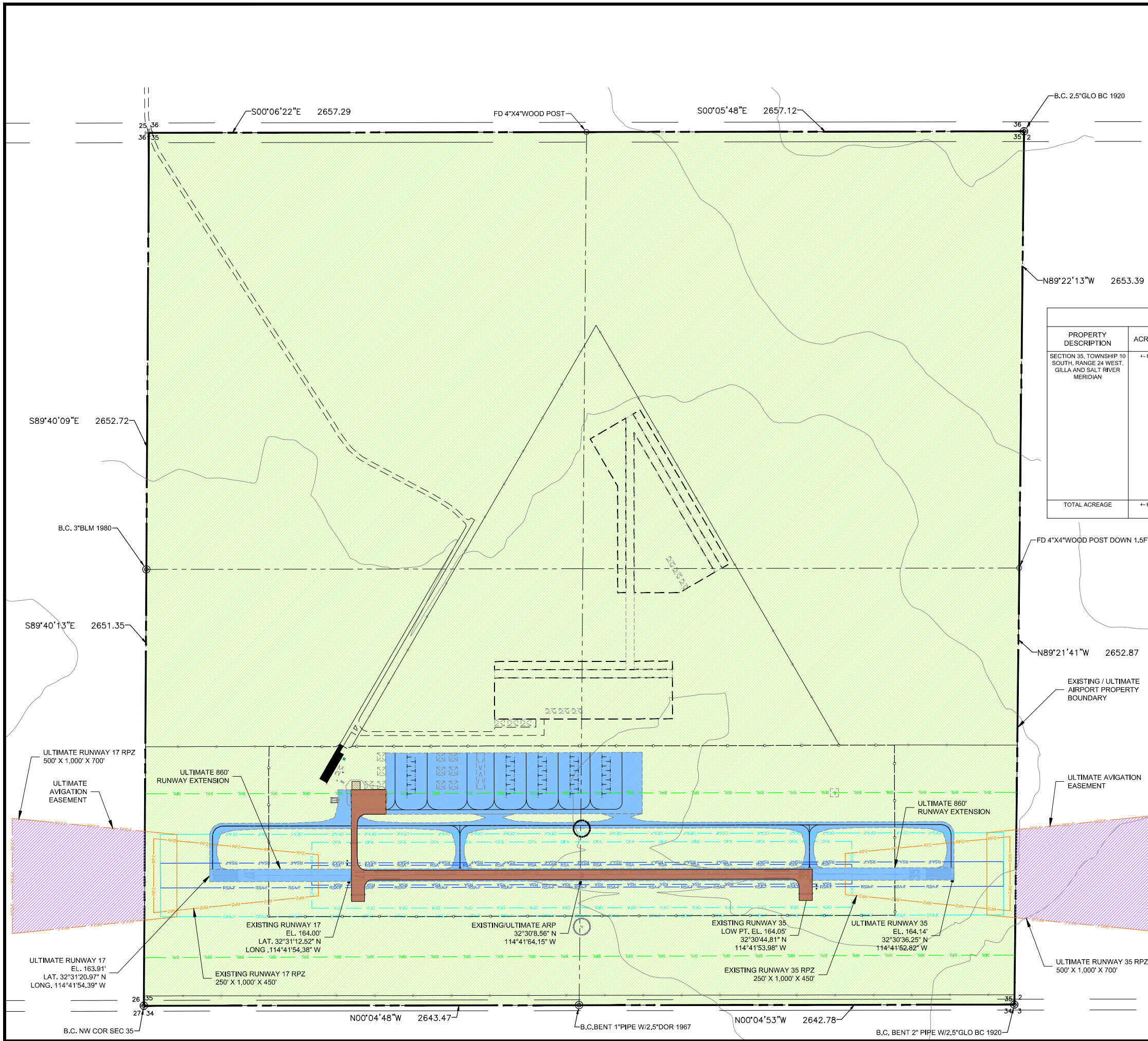
LEGEND	
EXISTING	ULTIMATE

NO.	DATE	REVISIONS / SUBMISSIONS

ROLLE FIELD
 YUMA COUNTY AIRPORT AUTHORITY
 SAN LUIS, ARIZONA
 AIRPORT LAYOUT PLAN

Designed by:	INITIALS
Drawn by:	pyd
Approved by:	INITIALS
Date:	10/20/14
MMI Project No.:	8788.001

AIRPORT LAYOUT PLAN
 INNER APPROACH SURFACE DRAWING
 RUNWAY 35 END



LEGEND		
EXISTING	ULTIMATE	
		AIRPORT PROPERTY LINE
		AIRPORT REFERENCE POINT
		SECURITY FENCE
		RUNWAY THRESHOLD LIGHTS
		SECTION CORNER
		GROUND CONTOURS
		SEGMENTED CIRCLE
		BUILDING
		ROAD
		AIRCRAFT PAVEMENT
		RUNWAY PROTECTION ZONE (RPZ)
		BUILDING RESTRICTION LINE (BRL)
		OBJECT FREE AREA (OFA)
		RUNWAY SAFETY AREA (RSA)
		OBSTACLE FREE ZONE (OFZ)

KEY	
	EXISTING AIRPORT PROPERTY
	FUTURE AVIGATION EASEMENT

LEGEND					
PROPERTY DESCRIPTION	ACREAGE	GRANTOR	DATE	HISTORY	REFERENCE *
SECTION 35, TOWNSHIP 10 SOUTH, RANGE 24 WEST, GILLA AND SALT RIVER MERIDIAN	+- 640.0	U.S. Department of the Interior Bureau of Reclamation Yuma Mesa Unit, Gilla Project Reclamation	03/25/1952	Yuma County was Granted "License to use lands for airport purposes" which authorize use of auxiliary airfield No. 4, for the purpose of operating, maintaining and managing an airport to be used for the benefit of the farmers and growers of the Yuma Valley	License: 178-544
			09/17/1973	Yuma County amended the original license at this time to allow for an additional term of license and to make available State funds for Capital Improvements, at this time the license was officially relocated to the Yuma County Airport Authority.	License: 158-544 Amendment: 1
			02/18/1986	Yuma county signed a new agreement with the Bureau of Reclamation extending their term of license for an additional 25 years.	Contract # 6-07-34-L0550
			10/23/2009	Amendment No. 1 to 1986 Agreement extended term of License 25 year to October 23, 2034	Amendment 1 Contract # 6-07-34-L0550
TOTAL ACREAGE	+- 640.0				

MORRISON MAIRLE, INC.
 Registered Professional Surveyors
 1275 West Washington Street
 Suite 108
 Tempe, AZ 85281
 Phone: (602) 275-2900
 Fax: (602) 275-2901

NO.	REVISIONS / SUBMISSIONS	DATE

ROLLE FIELD
YUMA COUNTY AIRPORT AUTHORITY
 SAN LUIS, ARIZONA
AIRPORT LAYOUT PLAN

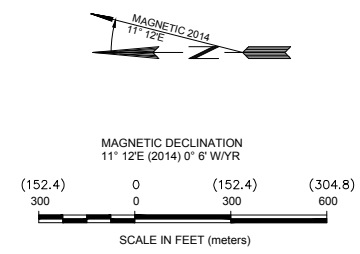
Designed by:	INITIALS
Drawn by:	pyd
Approved by:	INITIALS
Date:	10/20/14
MMI Project No.:	8788.001

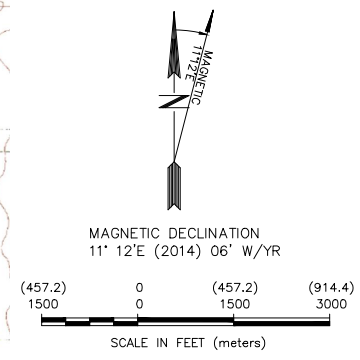
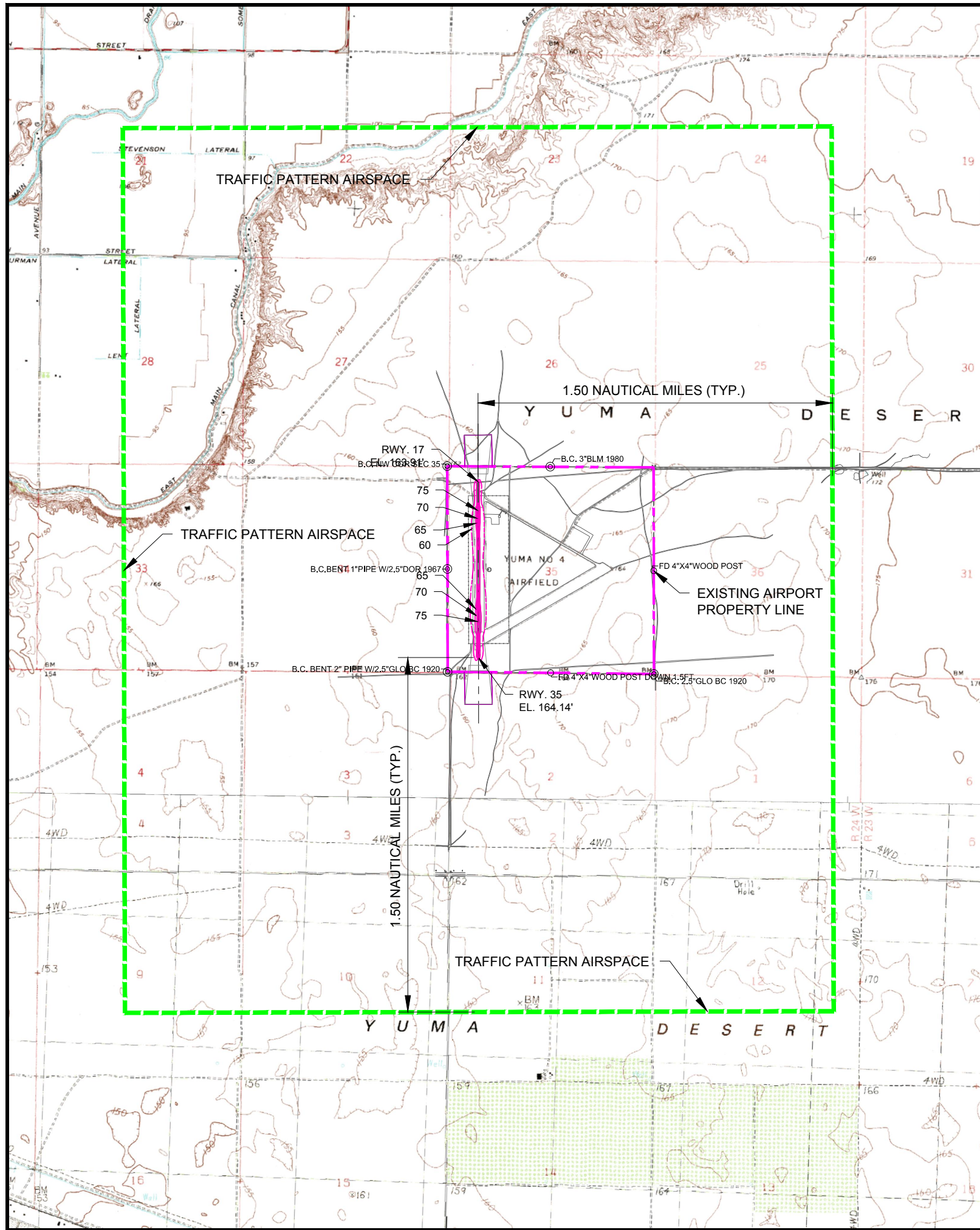
AIRPORT LAYOUT PLAN

EXHIBIT 'A' -
AIRPORT
PROPERTY MAP

SHEET REFERENCE NUMBER:
9

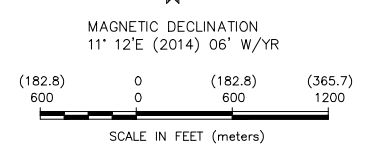
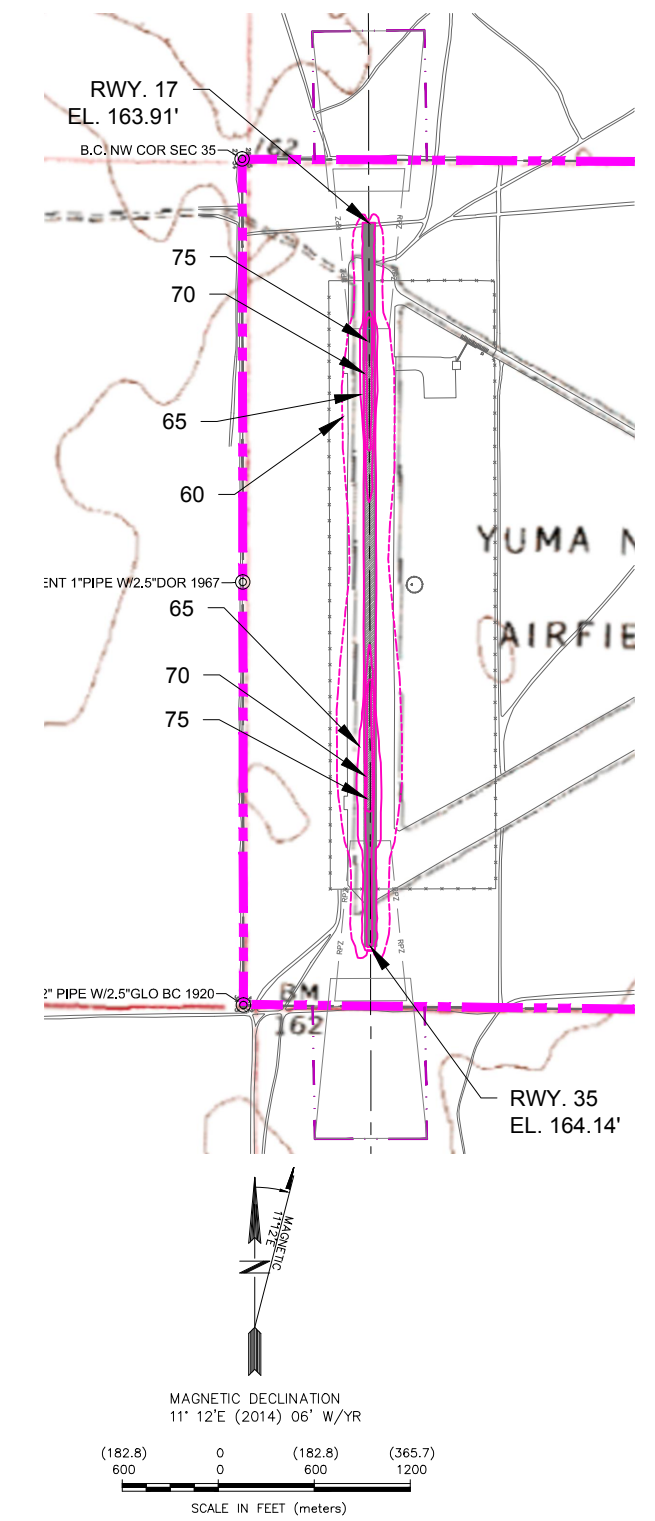
SHEET 9 OF 10





- NOTES:**
1. THIS MAP HAS BEEN PREPARED IN ACCORDANCE WITH THE ARIZONA REVISED STATUTES, SECTION 28-8486, RELATING TO PUBLIC AIRPORT DISCLOSURE.
 2. TRAFFIC PATTERN AIRSPACE BOUNDARIES HAVE BEEN ESTABLISHED IN ACCORDANCE WITH THE GUIDELINES PROVIDED IN FEDERAL AVIATION ADMINISTRATION (FAA) ORDER 7400.2G.
 3. THE AIRPORT NOISE CONTOURS HAVE BEEN DEVELOPED WITH THE INTEGRATED NOISE MODEL (VERSION 6.0) AND ARE BASED ON TOTAL ANNUAL OPERATIONS (TAKE-OFFS AND LANDINGS) OF 1,000.
 4. 1 NAUTICAL MILE = 6,080 FEET OR 1.1516 STATUTE MILES.
 5. DNL 65 IS IDENTIFIED AS THE "THRESHOLD OF INCOMPATIBILITY" FOR BOTH FEDERAL AND STATE AGENCIES. DNL CONTOUR 60IS SHOWN FOR REFERENCE ONLY.

- NOTES:**
- TRAFFIC PATTERN AIRSPACE
 - EXISTING AIRPORT PROPERTY LINE
 - EXTENDED RUNWAY CENTERLINE
 - 65 NOISE CONTOURS DAY NIGHT LEVEL (DNL)



MORRISON MAIBLE, INC.
 1275 West Washington Street
 Suite 108
 Tempe, AZ 85281
 Phone: (602) 275-2900
 Fax: (602) 275-2901

NO.	REVISIONS / SUBMISSIONS	DATE

ROLLE FIELD
 YUMA COUNTY AIRPORT AUTHORITY
 SAN LUIS, ARIZONA
AIRPORT LAYOUT PLAN

Designed by:	INITIALS
Drawn by:	pyd
Approved by:	INITIALS
Date:	10/20/14
MMI Project No.:	8788.001

AIRPORT LAYOUT PLAN
PUBLIC AIRPORT DISCLOSURE MAP

SHEET REFERENCE NUMBER:
10
 SHEET 10 OF 10