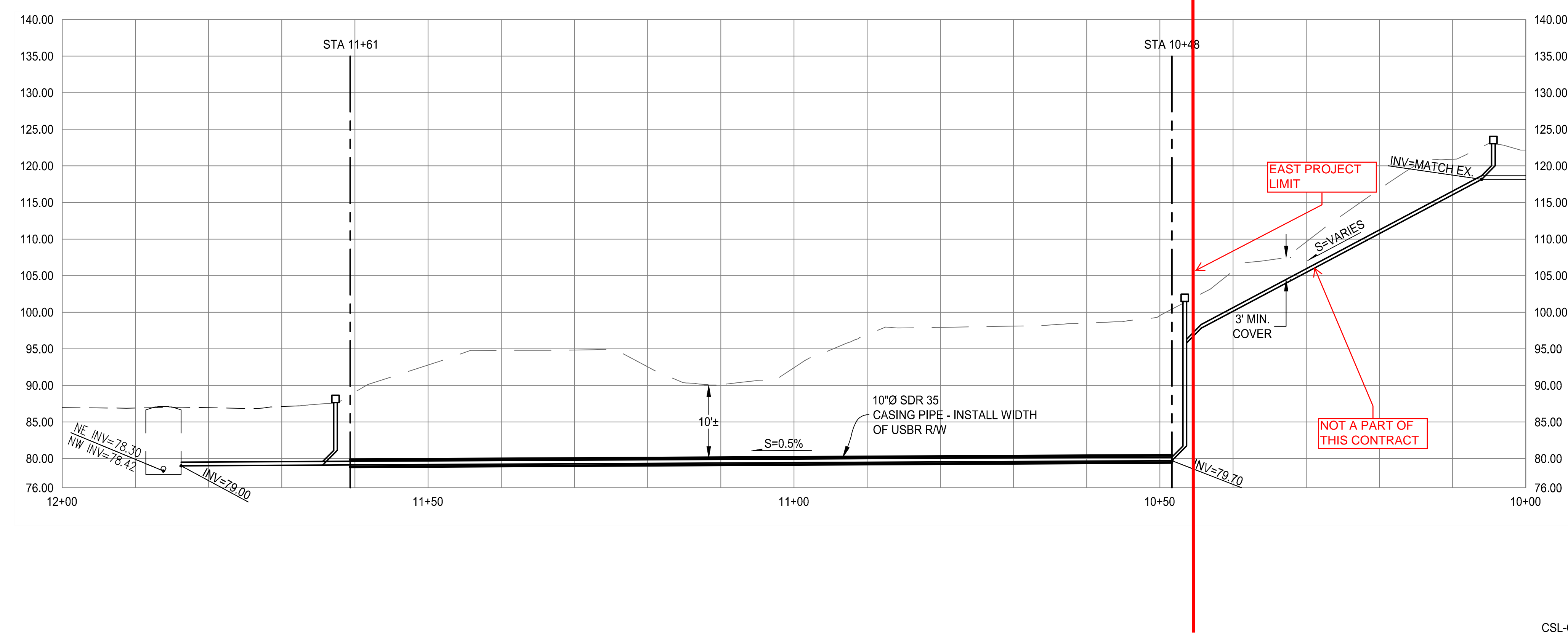
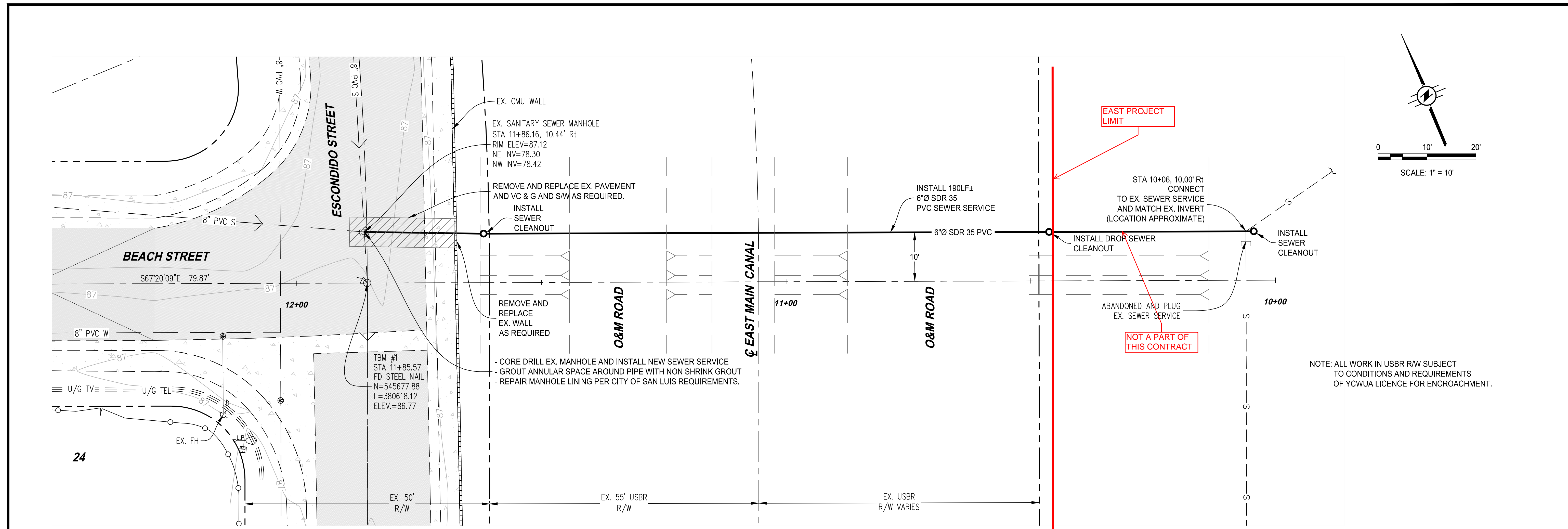


NOTE: ALL WORK IN USBR R/W SUBJECT TO CONDITIONS AND REQUIREMENTS OF YCWUA LICENCE FOR ENCROACHMENT.



JAMES DAVEY AND ASSOCIATES
CONSULTING CIVIL ENGINEERS
 1025 W. 24th Street, Ste. #2 - YUMA, AZ 85364 - (928) 782-7926

CATHOLIC CHURCH SEWER SERVICE
IMPROVEMENTS PROJECT

PLAN AND PROFILE
STA 12+00 TO STA 10+00

	PREPARED FOR: CITY OF SAN LUIS COMMUNITY DEVELOPMENT SAN LUIS, AZ 85349 (928) 341-8584
	DESIGNED BY: J.V.D.
	DRAWN BY: O.J.Z.
	APPROVED BY: J.V.D.
	SHEET P-1 JULY 21, 2015

CSL-04