



VIN/STK

Scott Dingee
Commercial Account Manager
Peoria Ford
9130 West Bell Road
Peoria, Arizona 85382
Phone: 480-405-2929
Email: sdingee@peoriaford.com
Fax: 480-393-5536

City of San Louis
Gilberto Torres

2016 F-150 4x4 XL Crew Cab Long Bed V-8

MSRP	\$40,800.00
Discount	\$12,425.08
Sales Price	\$28,374.92

Subtotal \$28,374.92

Sales Tax	\$2,298.37	8.10%
Doc Fee	\$395.00	

Total Amount Financed **\$31,068.29**

The rebate is in lieu of the factory interest rate, and using Ford Motor Credit Company to Finance.

Thank you for this opportunity to gain your business!

To place order, review for accuracy and fax back with signature and P.O. number (if applicable).

Signature: _____ **Date:** _____
Printed Name: _____ **P.O.#:** _____



Peoria Ford
9130 W. Bell Rd., Peoria, Arizona, 85382
Office: 623-977-8888 Fax: 623-877-8372

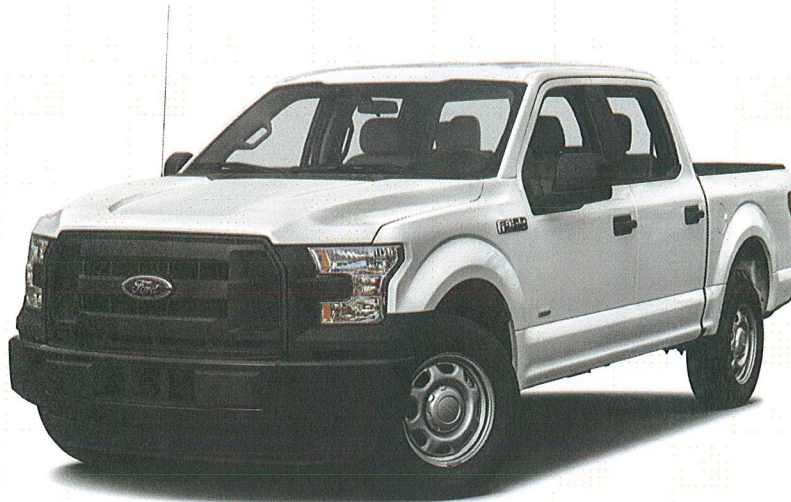
Customer Proposal

Prepared by:

Scott Dingee
Office: 480-205-2929
Email: sdingee@peoriaford.com

Date: 09/29/2015

Vehicle: 2016 F-150 XL
4x4 SuperCrew Cab Styleside 6.5' box 157"
WB





Selected Equipment & Specs

Dimensions

- * Exterior length: 243.7"
- * Exterior height: 77.3"
- * Turning radius: 25.6"
- * Max ground clearance: 10.2"
- * Rear legroom: 43.6"
- * Rear headroom: 40.4"
- * Rear hiproom: 64.7"
- * Rear shoulder room: 65.9"
- * Maximum cargo volume: 51.9cu.ft.
- * Exterior width: 79.9"
- * Wheelbase: 157.0"
- * Min ground clearance: 9.3"
- * Front legroom: 43.9"
- * Front headroom: 40.8"
- * Front hiproom: 62.5"
- * Front shoulder room: 66.7"
- * Passenger volume: 131.8cu.ft.
- * Box length: 78.0"

Powertrain

- * 385hp 5.0L DOHC 32 valve V-8 engine with Ti-VCT variable valve control, variable intake length, SMPI federal
- * Part-time
- * Fuel Economy Highway: 21 mpg
- * Recommended fuel : regular unleaded
- * 6 speed automatic transmission with overdrive
- * Fuel Economy City: 15 mpg
- * Capless fuel filler

Suspension/Handling

- * Front independent double wishbone suspension with anti-roll bar, gas-pressurized shocks
- * Speed-sensing electric power-assist rack-pinion Steering
- * P265/70SR17 OWL AT front and rear tires
- * Rear rigid axle leaf spring suspension with gas-pressurized shocks
- * Front and rear 17 x 7.5 silver steel wheels

Body Exterior

- * 4 doors
- * Conventional right rear passenger
- * Black door mirrors
- * Bed-rail protectors
- * Easy lower tailgate
- * Box style: regular
- * Front and rear 17 x 7.5 wheels
- * Conventional left rear passenger
- * Driver and passenger power remote folding door mirrors
- * Black bumpers
- * Easy lift tailgate
- * Trailer harness
- * Clearcoat paint

Convenience

- * Manual air conditioning
- * Power windows
- * Driver and passenger 1-touch down
- * Manual tilt steering wheel
- * Day-night rearview mirror
- * Smart device integration
- * Front and rear cupholders
- * Driver and passenger door bins
- * Cruise control with steering wheel controls
- * Driver and passenger 1-touch up
- * Remote power door locks with 2 stage unlock and illuminated entry
- * Manual telescopic steering wheel
- * Wireless phone connectivity
- * 2 1st row LCD monitors
- * Passenger visor mirror
- * Rear door bins

Seats and Trim

- * Seating capacity of 6
- * 4-way driver seat adjustment
- * Centre front armrest
- * Front 40-20-40 split-bench seat
- * 4-way passenger seat adjustment
- * 60-40 folding rear split-bench seat

Entertainment Features

- * AM/FM stereo radio
- * SYNC external memory control

Prices and content availability as shown are subject to change and should be treated as estimates only. Actual base vehicle, package and option pricing may vary from this estimate because of special local pricing, availability or pricing adjustments not reflected in the dealer's computer system. See salesperson for the most current information.



Selected Equipment & Specs (cont'd)

- * Steering wheel mounted radio controls
- * Wireless streaming
- * 6 speakers
- * Fixed antenna

Lighting, Visibility and Instrumentation

- * Halogen aero-composite headlights
- * Fully automatic headlights
- * Light tinted windows
- * Voltmeter
- * Outside temperature display
- * Trip computer
- * Delay-off headlights
- * Variable intermittent front windshield wipers
- * Tachometer
- * Oil pressure gauge
- * Low tire pressure warning
- * Trip odometer

Safety and Security

- * 4-wheel ABS brakes
- * 4-wheel disc brakes
- * ABS and driveline traction control
- * Dual seat mounted side impact airbag supplemental restraint system
- * Airbag supplemental restraint system occupancy sensor
- * Power remote door locks with 2 stage unlock and panic alarm
- * MyKey restricted driving mode
- * 3 manually adjustable rear head restraints
- * Hill hold control
- * Electronic stability
- * Dual front impact airbag supplemental restraint system
- * Safety Canopy System curtain 1st and 2nd row overhead airbag supplemental restraint system
- * Remote activated perimeter/approach lighting
- * Security system with SecuriLock immobilizer
- * Manually adjustable front head restraints

Dimensions

General Weights

Curb	4909 lbs.	GVWR	7050 lbs.
Front GAWR	3650 lbs.	Rear GAWR	3800 lbs.
Payload	2100 lbs.	Front curb weight	2969 lbs.
Rear curb weight	1940 lbs.	Front spring rating	3650 lbs.
Rear spring rating	3800 lbs.	Front tire/wheel capacity	3650 lbs.
Rear tire/wheel capacity	4050 lbs.		

Trailer Type

Harness	Yes	Trailer sway control	Yes
---------	-----	----------------------	-----

General Trailering

5th-wheel towing capacity	8800 lbs.	Towing capacity	8900 lbs.
GCWR	14300 lbs.		

Fuel Tank type

Capacity	23 gal.	Capless fuel filler	Yes
----------	---------	---------------------	-----

Off Road

Min ground clearance	9 "	Max ground clearance	10 "
Load floor height	36 "		

Exterior cargo

Length	78.0 "	Minimum width	50.6 "
Volume	62.3 cu.ft.	Pickup box depth	21.4 "
Maximum width	65.2 "	Tailgate width	60.3 "

Interior cargo

Maximum cargo volume	51.9 cu.ft.
----------------------	-------------

Powertrain

Prices and content availability as shown are subject to change and should be treated as estimates only. Actual base vehicle, package and option pricing may vary from this estimate because of special local pricing, availability or pricing adjustments not reflected in the dealer's computer system. See salesperson for the most current information.



Selected Equipment & Specs (cont'd)

Engine Type

Block material	Aluminum	Cylinders	V-8
Head material	Aluminum	Ignition	Electronic
Injection	Sequential MPI	Liters	5.0L
Orientation	Longitudinal	Recommended fuel	Regular unleaded
Valves per cylinder	4	Valvetrain	DOHC
Variable valve control	Ti-VCT		

Engine Spec

Bore	3.63"	Compression ratio	10.5:1
Displacement	302 cu.in.	Stroke	3.65"

Engine Power

Output	385 HP @ 5,750 RPM	Torque	387 ft.-lb @ 3,850 RPM
--------	--------------------	--------	------------------------

Alternator

Amps	200
------	-----

Battery

Amp hours	70	Cold cranking amps	610
Run down protection	Yes		

Transmission

Electronic control	Yes	Lock-up	Yes
Overdrive	Yes	Speed	6
Type	Automatic		

Transmission Gear Ratios

1st	4.17	2nd	2.34
3rd	1.52	4th	1.14
5th	0.86	6th	0.69
Reverse Gear ratios	3.4		

Transmission Torque Converter

Stall ratio	2.30
-------------	------

Transmission Extras

Driver selectable mode	Yes	Sequential shift control	SelectShift
------------------------	-----	--------------------------	-------------

Drive Type

4wd type	Part-time	Type	Four-wheel
----------	-----------	------	------------

Drive Feature

Traction control	ABS and driveline	Locking hub control	Auto
Transfer case shift	Electronic		

Drive Axle

Ratio	3.31
-------	------

Exhaust

Material	Stainless steel	System type	Single
----------	-----------------	-------------	--------

Emissions

CARB	Federal	EPA	Tier 2 Bin 4
------	---------	-----	--------------

Fuel Economy

City	15 mpg	Highway	21 mpg
Fuel type	Gasoline	Combined	17 mpg

Prices and content availability as shown are subject to change and should be treated as estimates only. Actual base vehicle, package and option pricing may vary from this estimate because of special local pricing, availability or pricing adjustments not reflected in the dealer's computer system. See salesperson for the most current information.



Selected Equipment & Specs (cont'd)

Fuel Economy (Alternate 1)

City	11 mpg	Highway	16 mpg
Fuel type	E85	Combined	13 mpg

Acceleration

0-60 mph (s)	5.66
--------------	------

1/4 Mile

Seconds	14.1	Speed	98 mph
---------	------	-------	--------

Skid Pad

Lateral acceleration (g)	0.7
--------------------------	-----

Slalom

Speed	54 mph
-------	--------

Green Values

Energy Impact Score (Barrels per year)	19.4	Carbon FP / Tailpipe and upstream total GHG (CO ₂ , tons per year)	10.6
Energy Impact Score (Barrels per year)	5.8		

Driveability

Brakes

ABS Type	4-wheel 4-wheel disc	ABS channels Vented discs	4 Front and rear
----------	----------------------	---------------------------	------------------

Brake Assistance

Hill hold control	Yes
-------------------	-----

Suspension Control

Ride	Regular	Electronic stability	Stability control with anti-roll
------	---------	----------------------	----------------------------------

Front Suspension

Independence	Independent	Type	Double wishbone
Anti-roll bar	Regular		

Front Spring

Type	Coil	Grade	Regular
------	------	-------	---------

Front Shocks

Type	Gas-pressurized
------	-----------------

Rear Suspension

Independence	Rigid axle	Type	Leaf
--------------	------------	------	------

Rear Spring

Type	Leaf	Grade	Regular
------	------	-------	---------

Rear Shocks

Type	Gas-pressurized
------	-----------------

Steering

Speed-sensing Type	Yes Rack-pinion	Activation	Electric power-assist
--------------------	-----------------	------------	-----------------------

Steering Specs

# of wheels	2
-------------	---

Prices and content availability as shown are subject to change and should be treated as estimates only. Actual base vehicle, package and option pricing may vary from this estimate because of special local pricing, availability or pricing adjustments not reflected in the dealer's computer system. See salesperson for the most current information.



Selected Equipment & Specs (cont'd)

Exterior

Front Wheels

Diameter 17" Width 7.50"

Rear Wheels

Diameter 17" Width 7.50"

Spare Wheels

Wheel material Steel

Front and Rear Wheels

Appearance Silver Material Steel
Covers Hub

Front Tires

Aspect 70 Diameter 17"
Sidewalls OWL Speed S
Tread AT Type P
Width 265mm

Rear Tires

Aspect 70 Diameter 17"
Sidewalls OWL Speed S
Tread AT Type P
Width 265mm

Spare Tire

Mount Underbody w/crankdown Type Full-size

Wheels

Turning radius 25.6' Wheelbase 157.0"

Body Features

Body material Aluminum Side impact beams Yes
Active grille shutters Yes

Body Doors

Door count 4 Left rear passenger Conventional
Right rear passenger Conventional Rear cargo Tailgate

Pickup

Box style Regular Bed-rail protectors Yes
Easy lift tailgate Yes Easy lower tailgate Yes

Exterior Dimensions

Length 243.7" Body width 79.9"
Body height 77.3" Frame section modulus 5.7cu.in.
Frame yield strength (psi) 49300.0 Front bumper to Front axle 37.8"

Safety

Airbags

Driver front-impact Yes Driver side-impact Seat mounted
Occupancy sensor Yes Overhead Safety Canopy System curtain 1st
and 2nd row
Passenger front-impact Yes Passenger side-impact Seat mounted

Prices and content availability as shown are subject to change and should be treated as estimates only. Actual base vehicle, package and option pricing may vary from this estimate because of special local pricing, availability or pricing adjustments not reflected in the dealer's computer system. See salesperson for the most current information.



Selected Equipment & Specs (cont'd)

Seatbelt			
Rear centre 3 point Pre-tensioners	Yes Front	Height adjustable Pre-tensioners (#)	Front 2
Security			
Immobilizer Restricted driving mode	SecuriLock MyKey	Panic alarm	Yes
Seating			
Passenger Capacity			
Capacity	6		
Front Seats			
Split	40-20-40	Type	Split-bench
Driver Seat			
Fore/aft Way direction control	Manual 4	Reclining	Manual
Passenger seat			
Fore/aft Way direction control	Manual 4	Reclining	Manual
Front Head Restraint			
Control	Manual	Type	Adjustable
Front Armrest			
Centre	Yes		
Rear Seats			
Descriptor Folding Type	Split-bench 60-40 Fixed	Facing Folding position	Front Fold-up cushion
Rear Head Restraints			
Control Number	Manual 3	Type	Adjustable
Front Seat Trim			
Material	Vinyl	Back material	Vinyl
Rear Seat Trim Group			
Material	Vinyl	Back material	Carpet
Convenience			
AC And Heat Type			
Air conditioning	Manual	Underseat ducts	Yes
Audio System			
Radio Seek-scan	AM/FM stereo Yes	Radio grade External memory control	Regular SYNC
Audio Speakers			
Speaker type	Regular	Speakers	6
Audio Controls			
Steering wheel controls	Yes	Voice activation	Yes

Prices and content availability as shown are subject to change and should be treated as estimates only. Actual base vehicle, package and option pricing may vary from this estimate because of special local pricing, availability or pricing adjustments not reflected in the dealer's computer system. See salesperson for the most current information.



Selected Equipment & Specs (cont'd)

Wireless streaming	Bluetooth yes		
Audio Antenna			
Type	Fixed		
LCD Monitors			
1st row	2	Primary monitor size (inches)	4.2
Cruise Control			
Cruise control	With steering wheel controls		
Convenience Features			
Retained accessory power	Yes	12V DC power outlet	3
Wireless phone connectivity	Bluetooth	Smart device integration	App link
Door Lock Activation			
Type	Power with 2 stage unlock	Remote	Keyfob (all doors)
Integrated key/remote	Yes	Auto locking	Yes
Door Lock Type			
Rear child safety	Manual	Tailgate/rear door lock	Included with power door locks
Instrumentation Type			
Display	Analog		
Instrumentation Gauges			
Tachometer	Yes	Oil pressure	Yes
Engine temperature	Yes	Voltmeter	Yes
Inclinometer	Yes	Transmission fluid temp	Yes
Instrumentation Warnings			
Oil pressure	Yes	Engine temperature	Yes
Battery	Yes	Lights on	Yes
Key	Yes	Low fuel	Yes
Lighting malfunction	Yes	Door ajar	Yes
Service interval	Yes	Brake fluid	Yes
Low tire pressure	Tire specific		
Instrumentation Displays			
Clock	In-radio display	Exterior temp	Yes
Systems monitor	Yes		
Instrumentation Feature			
PRND in IP	Yes	Trip computer	Yes
Trip odometer	Yes		
Steering Wheel Type			
Material	Urethane	Tilting	Manual
Telescoping	Manual		
Front Side Windows			
Window 1st row activation	Power		
Windows Rear Side			
2nd row activation	Power		
Window Features			
1-touch down	Driver and passenger	1-touch up	Driver and passenger

Prices and content availability as shown are subject to change and should be treated as estimates only. Actual base vehicle, package and option pricing may vary from this estimate because of special local pricing, availability or pricing adjustments not reflected in the dealer's computer system. See salesperson for the most current information.



Selected Equipment & Specs (cont'd)

Tinted	Light		
<i>Front Windshield</i>			
Wiper	Variable intermittent		
<i>Rear Windshield</i>			
Window	Fixed		
Interior			
<i>Passenger Visor</i>			
Mirror	Yes		
<i>Rear View Mirror</i>			
Day-night	Yes		
<i>Headliner</i>			
Coverage	Full	Material	Cloth
<i>Floor Trim</i>			
Coverage	Full	Covering	Vinyl/rubber
<i>Trim Feature</i>			
Gear shift knob	Urethane	Cabback insulator	Yes
Interior accents	Chrome		
<i>Lighting</i>			
Dome light type	Fade	Illuminated entry	Yes
Variable IP lighting	Yes		
<i>Storage</i>			
Driver door bin	Yes	Front Beverage holder(s)	Yes
Glove box	Yes	Passenger door bin	Yes
Rear yes	Yes	Instrument panel	Bin
Dashboard	Yes	Rear door bins	Yes
<i>Legroom</i>			
Front	43.9"	Rear	43.6"
<i>Headroom</i>			
Front	40.8"	Rear	40.4"
<i>Hip Room</i>			
Front	62.5"	Rear	64.7"
<i>Shoulder Room</i>			
Front	66.7"	Rear	65.9"
<i>Interior Volume</i>			
Passenger volume	131.8 cu.ft.		

Prices and content availability as shown are subject to change and should be treated as estimates only. Actual base vehicle, package and option pricing may vary from this estimate because of special local pricing, availability or pricing adjustments not reflected in the dealer's computer system. See salesperson for the most current information.



Selected Options

Code	Description	MSRP
Base Vehicle		
W1E	Base Vehicle Price (W1E)	\$38,100.00
Packages		
101A	Equipment Group 101A Mid	\$1,505.00
Powertrain		
99F	Engine: 5.0L V8 FFV	Included
446	Transmission: Electronic 6-Speed Automatic <i>Includes tow/haul mode.</i>	Included
X27	3.31 Axle Ratio	Included
STDGV	GVWR: 7,050 lbs Payload Package	Included
Wheels & Tires		
STDTR	Tires: P265/70R17 OWL A/T	Included
64C	Wheels: 17" Silver Steel	Included
Seats & Seat Trim		
A	Vinyl 40/20/40 Front Seat	N/C
Other Options		
157WB	157" Wheelbase	STD
58B	Radio: AM/FM Stereo/Single-CD Player <i>Includes 6 speakers.</i>	Included
PAINT	Monotone Paint Application	STD
55B	BoxLink <i>Includes 4 premium locking cleats.</i>	Included
Fleet Options		
85A	XL Power Equipment Group	Included
52B	SYNC Voice Recognition Communications <i>Enhanced voice recognition communication and entertainment system. Includes 911 assist, 4.2" LCD display in center stack, Applink, 1 smart charging USB port, VHR, SYNC services, Bluetooth and steering wheel audio controls. Compass display in instrument cluster.</i>	Included
50S	Cruise Control	Included
Interior Colors		
AG	Medium Earth Gray	N/C
Primary Colors		
YZ	Oxford White	N/C

Prices and content availability as shown are subject to change and should be treated as estimates only. Actual base vehicle, package and option pricing may vary from this estimate because of special local pricing, availability or pricing adjustments not reflected in the dealer's computer system. See salesperson for the most current information.



Peoria Ford
9130 W. Bell Rd., Peoria, Arizona, 85382
Office: 623-977-8888

2016 F-150, SuperCrew Cab Styleside
4x4 SuperCrew Cab Styleside 6.5' box 157" WB
XL(W1E)

Selected Options (cont'd)

Code	Description	MSRP
SUBTOTAL		\$39,605.00
Destination Charge		\$1,195.00
TOTAL		\$40,800.00

Prices and content availability as shown are subject to change and should be treated as estimates only. Actual base vehicle, package and option pricing may vary from this estimate because of special local pricing, availability or pricing adjustments not reflected in the dealer's computer system. See salesperson for the most current information.

Prepared by: Scott Dingee | Date: 09/29/2015 | Price Level: 615 | Quote ID: sanlouis3