

*San Luis*

# Transit Route Circulation Study

San Luis City Council

April 13, 2016

**Kimley»Horn**  
Expect More. Experience Better.

# Study Overview

- ★ Evaluate the feasibility and opportunity for a new transit route in San Luis
- ★ Route designed as a circulator for movement within San Luis
- ★ Route would complement existing YCAT Route 95 and Route 9 for regional service
- ★ Work closely with community, stakeholders, and YCIPTA to design a successful route
- ★ Implementation:
  - ★ Dependent upon funding
  - ★ Could be implemented as a 6-month pilot project

# Work Plan



# Outreach Results

- ★ Interviews with stakeholders

- ❖ Parks & Rec, schools, Bienestar, Chamber of Commerce

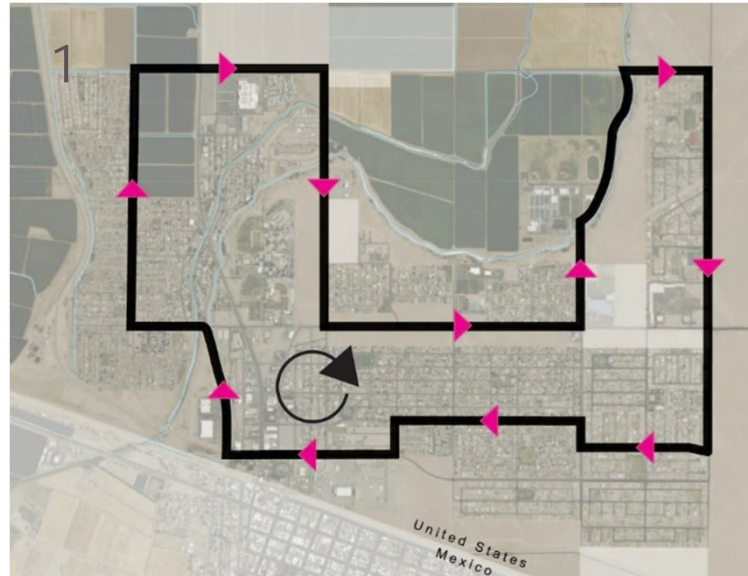
- ★ Identified key activity centers:

- ❖ Riedel Center
- ❖ Rec Center
- ❖ Del Sol Grocery / ACT Call Center
- ❖ Fernando Padilla Community Center
- ❖ Walmart
- ❖ Bienestar Housing
- ❖ San Luis HS / AWC

- ★ Noted that many students currently use taxis to get between school and POE

# Potential Route and Operations

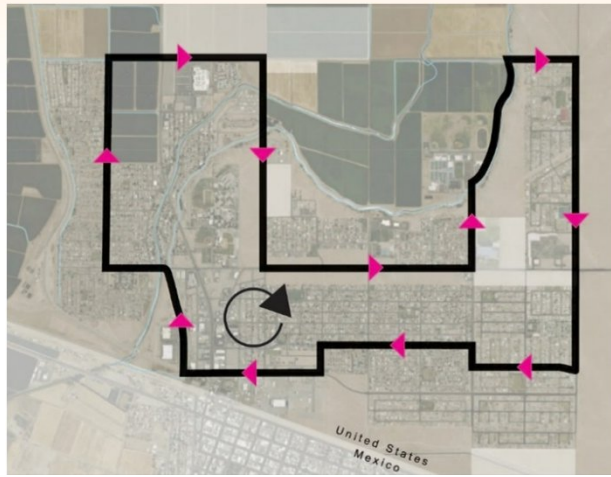
- ★ Four scenarios are developed
- ★ Loops designed to create efficient operations and locate stops close to activity centers
- ★ Align stop locations and times for transfers to YCAT Routes 95 and 9



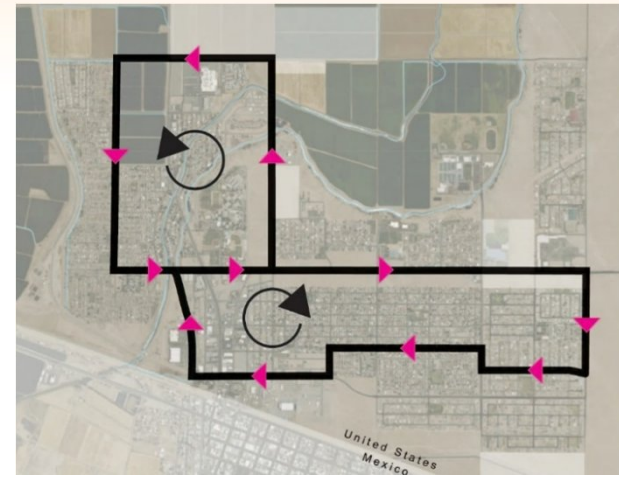
Parameter	Initial Consideration
Service Span	5am-10pm M-F, 5am-6pm Saturday
Service Frequency	60 minutes
Service Type	Fixed Route
Vehicle	40 foot diesel bus (confirm with YCIPTA)

# Potential Route Alternatives

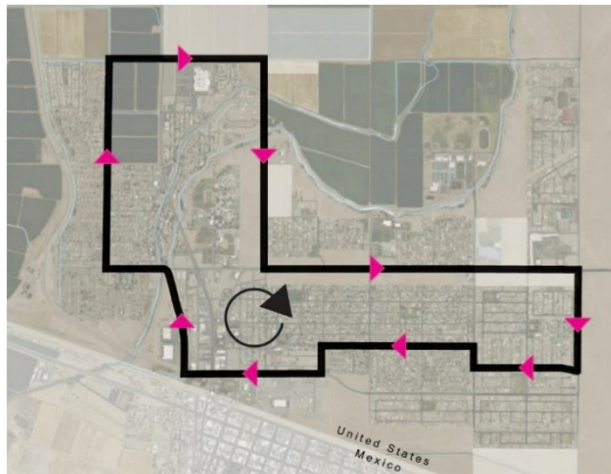
1



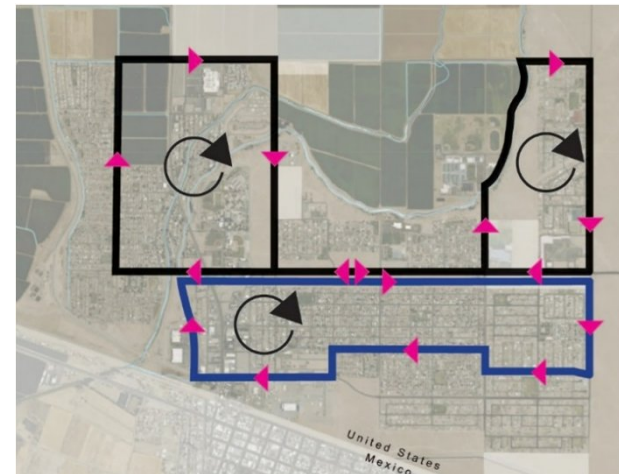
3



2



4



# What's Next

- ★ Meet with project Technical Advisory Committee
  - ★ Wednesday, April 14, 2016
  - ★ Gather input on preferred route, operational parameters
- ★ Select a preferred route alternative
- ★ Develop implementation plan for the preferred route
  - ★ Identify bus stop locations and infrastructure improvements
  - ★ Develop capital and operational cost estimate
  - ★ Marketing strategy for the route



# Questions and Answers