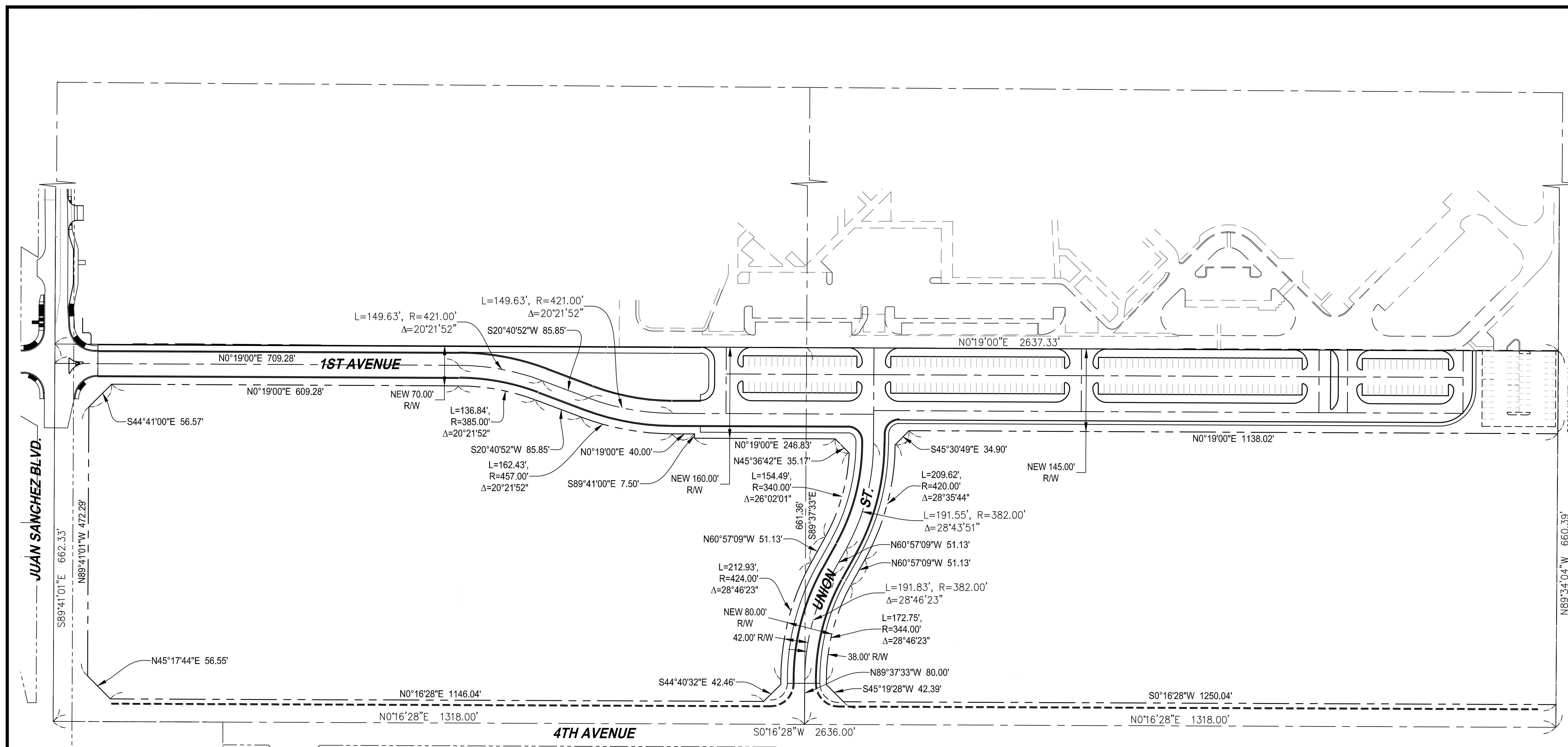
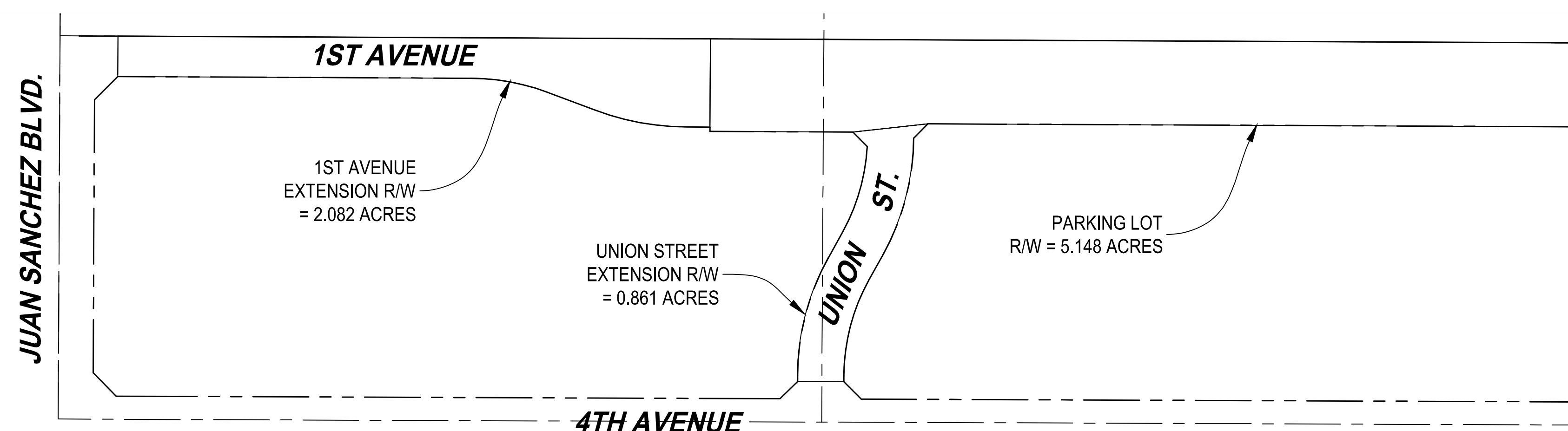


0 100' 200'

SCALE: 1" = 100'



CONCEPTUAL RIGHT-OF-WAY PLAN



RIGHT-OF-WAY ACREAGES

0 200' 400'

SCALE: 1" = 200'



GSD-01

JAMES DAVEY AND ASSOCIATES
CONSULTING CIVIL ENGINEERS
1025 W. 24th Street, Ste. #2 - YUMA, AZ 85364 - (928) 782-7926

GADSDEN ELEMENTARY SCHOOL DISTRICT
ARIZONA DESERT ELEMENTARY SCHOOL
SAN LUIS MIDDLE SCHOOL

ROADWAYS AND PARKING
- RIGHT-OF-WAY PLAN -

PRELIMINARY
FOR REVIEW ONLY

PREPARED FOR:
GADSDEN ELEMENTARY
SCHOOL DISTRICT #32
1453 N. MAIN STREET
SAN LUIS, AZ 85349

DESIGNED BY: J.V.D.

DRAWN BY: O.J.Z.

APPROVED BY: J.V.D.

SHEET C-1

MAY 26, 2016