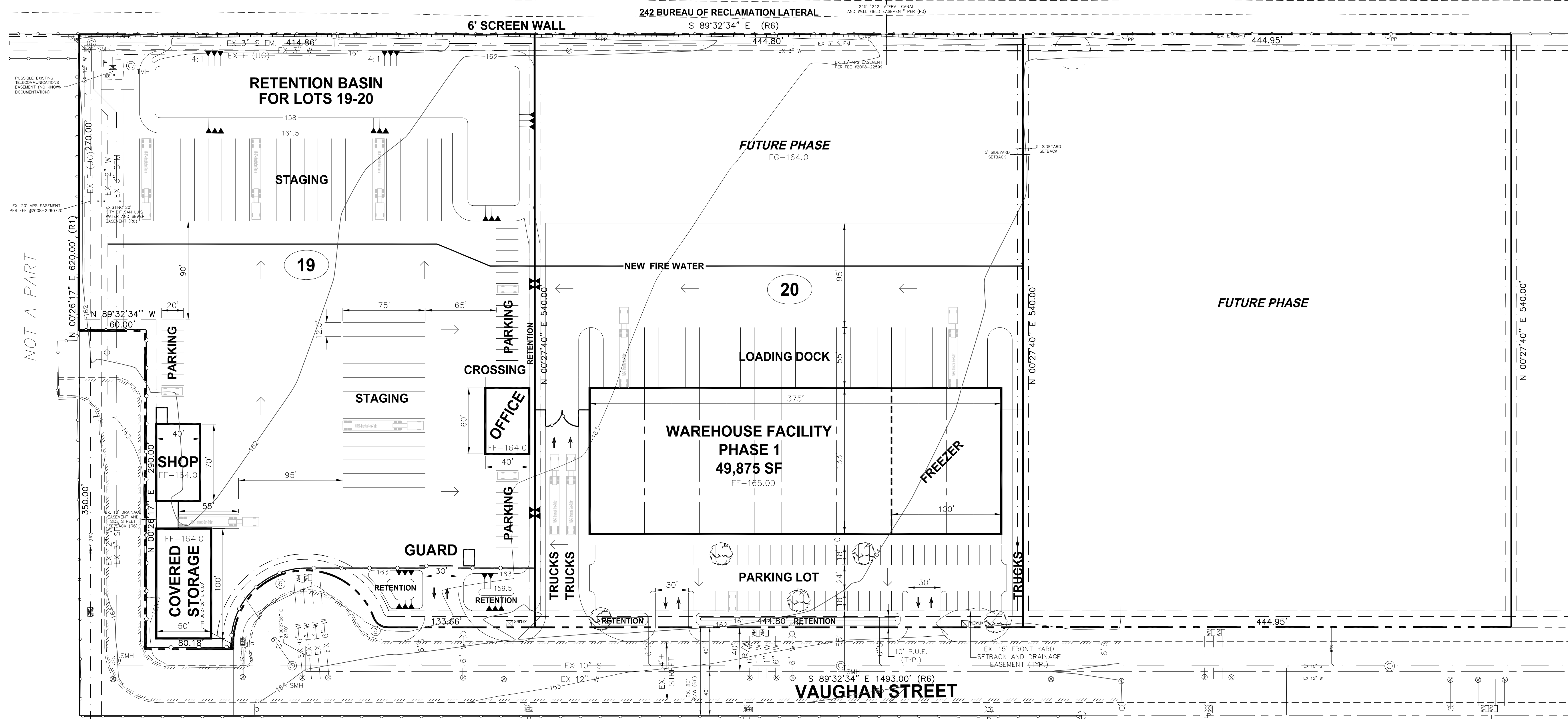
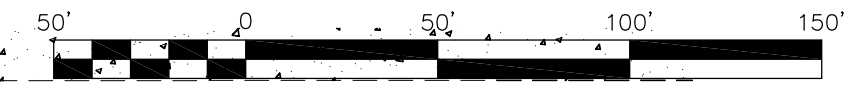
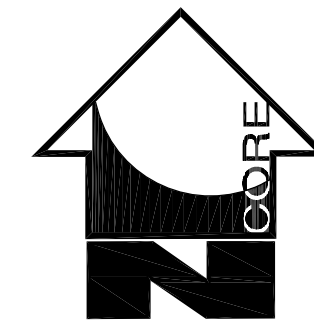


RL JONES PHASE 1 AT SAN LUIS II POE CONCEPTUAL SITE LAYOUT MAGRINO INDUSTRIAL PARK UNIT NO. 2 LOTS 19 and 20



NOT A PART

NOT A PART
LOT 21
LOT SPLIT/LOT TIE FOR
MAGRINO INDUSTRIAL PARK UNIT NO. 2 LOTS 1-8
BOOK 28, PAGE 16, YCR

LEGEND

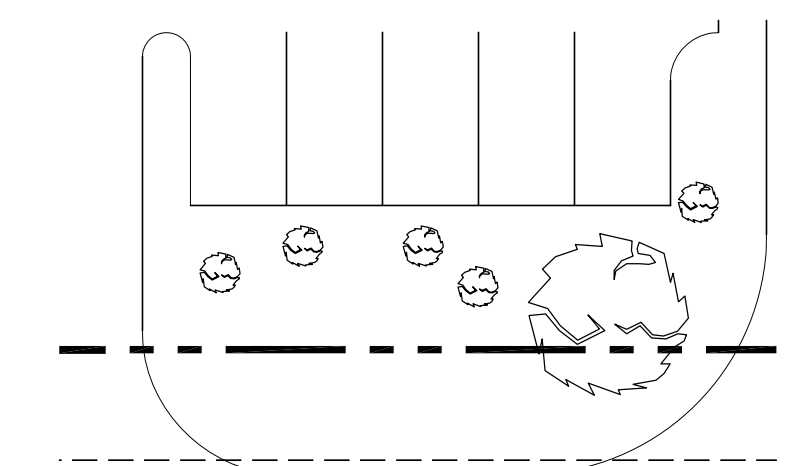
---	CENTERLINE	○	EX. MANHOLE
---	RIGHT-OF-WAY	○	EX. CLEAN OUT
---	EX. WATER LINE	○	EX. WATER METER
---	EX. SEWER LINE	□	EX. GAS METER
---	EX. OVERHEAD ELECTRIC LINE	□	EX. MAIL BOX
---	EX. UNDERGROUND ELECTRIC LINE	---	EX. SIGN
---	EX. UNDERGROUND FIBER OPTIC LINE	---	FW NEW FIRE WATER LINE
---	EX. GAS LINE	20	LOT NUMBER
---	EX. BLOCK WALL	---	RETENTION
---	EX. CURB AND GUTTER	---	CONTOUR
---	EX. CONCRETE	---	TREE
---	EX. EDGE OF PAVEMENT	---	DRAINAGE FLOW ARROW
---	EX. CHAINLINK FENCE	---	
---	EX. WOOD FENCE	---	
---	EX. POWER POLE	---	
---	EX. TELEPHONE POLE	---	
---	EX. LIGHT POLE	---	
---	EX. ELECTRIC BOX	---	
---	EX. GUY WIRE	---	

DISCLAIMER

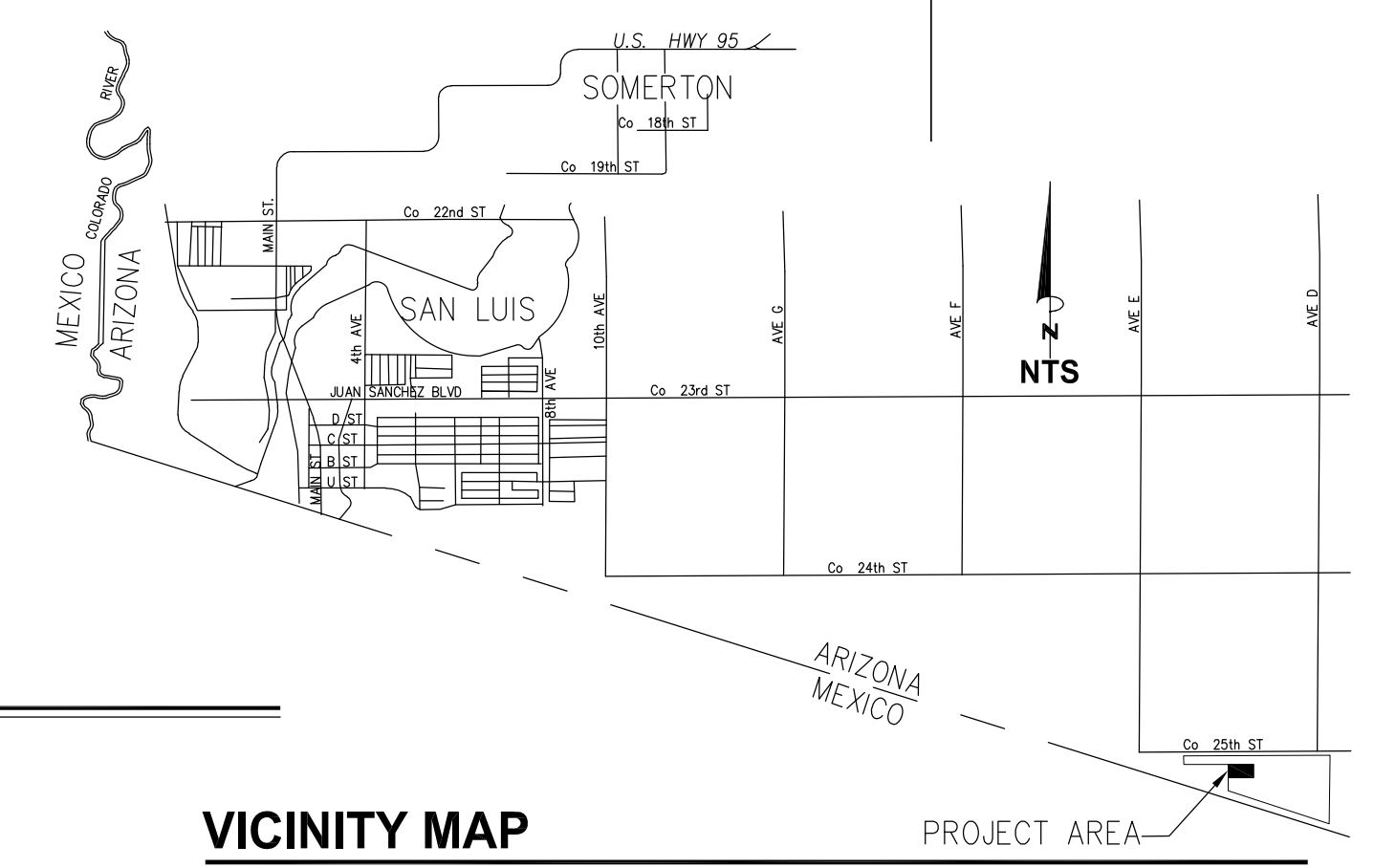
THE SITE PLAN PRESENTED IN THIS EXHIBIT IS PRELIMINARY AND ELEMENTS MAY CHANGE OR BE MODIFIED DURING FINAL DESIGN. THE PURPOSE OF THE EXHIBIT IS TO DEMONSTRATE THE PROPOSED SITE USE AND SURROUNDING FACILITIES THAT WILL SUPPORT THE FUNCTION OF THE PROPOSED USE.

NOTE

EASEMENTS FOR PARKING, ACCESS, DRAINAGE AND FIRE LINE WILL BE PROVIDED IN PROJECT DEVELOPMENT.



TYPICAL LANDSCAPE ISLAND
BY CITY OF SAN LUIS STANDARD



VICINITY MAP

DRAWING RECORD:

No.	DATE:

CORE ENGINEERING GROUP, PLLC
200 East 16th Street, Suite 150
Yuma, AZ 85364
V - 928.344.5931 F - 928.344.5932
www.CoreEngineeringGroup.com
Core@core-e-g.com

RL Jones Phase 1 at San Luis II POE
MAGRINO INDUSTRIAL PARK UNIT NO. 2 - LOTS 19 & 20
SAN LUIS, AZ

CUP - CONCEPTUAL SITE PLAN

THIS DRAWING AND THE DATA CONTAINED HEREON ARE THE PROPERTY OF CORE ENGINEERING GROUP, PLLC AND SHALL NOT BE USED, REPRODUCED OR TRANSMITTED, WITHOUT THE PRIOR EXPRESS CONSENT OF THE COMPANY, NOR SHALL ANY DATA OR INFORMATION CONTAINED HEREON BE USED IN A MANNER INCONSISTENT WITH THE PRIOR EXPRESS WRITTEN AUTHORIZATION OF THE COMPANY.

SEP 2016
Designed: K.L.B.
Drawn: J.M.G.
Checked: D.J.N.
Proj. No.: 16-043

1 OF 1
SHEET OF

Wed, 21 Sep 2016 8:07am 2:\2016\16-043\dwg\CUP\16-043_CUP_Site Plan Lots 19 and 20.dwg Core Engineering Group, PLLC