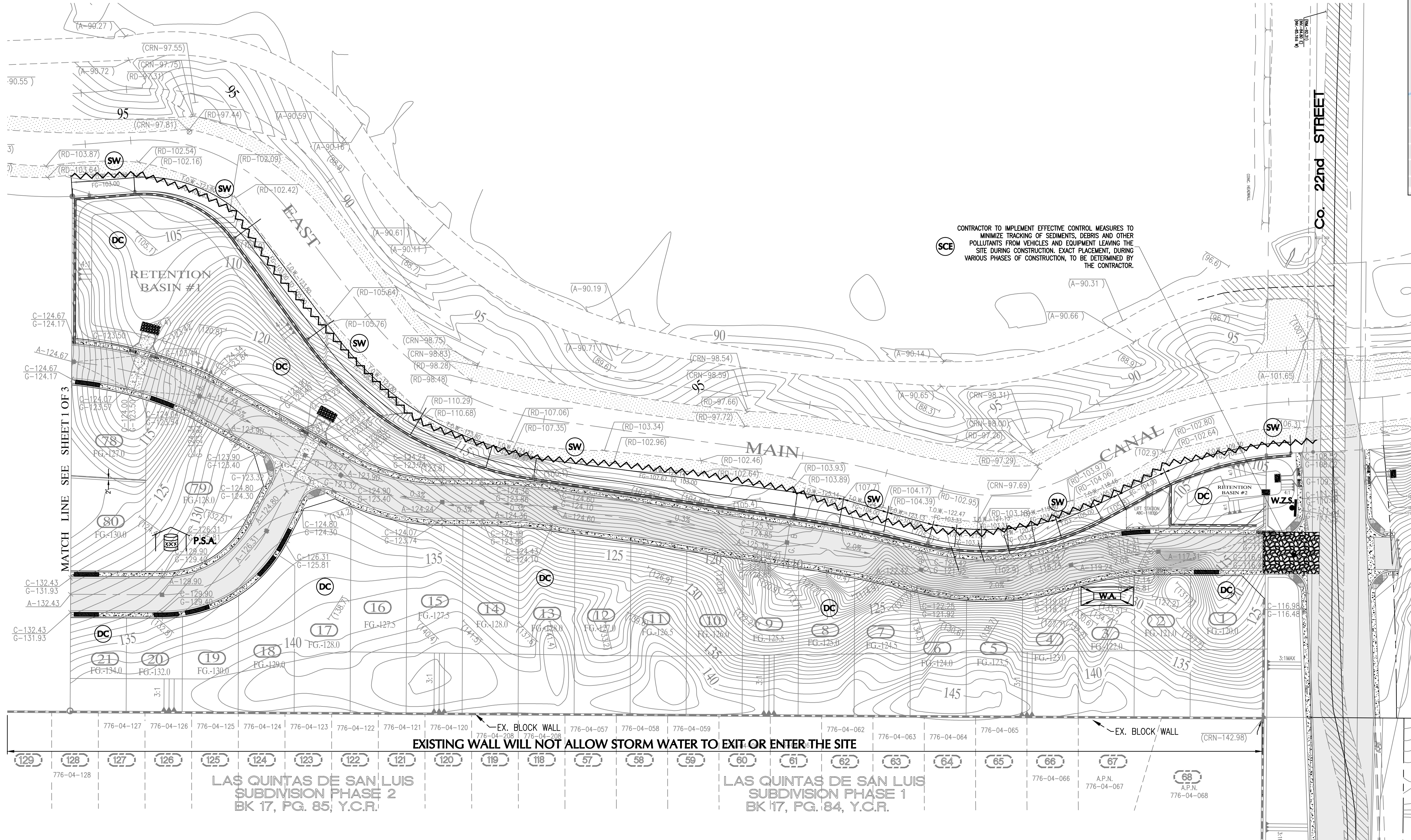


VICINITY MAP



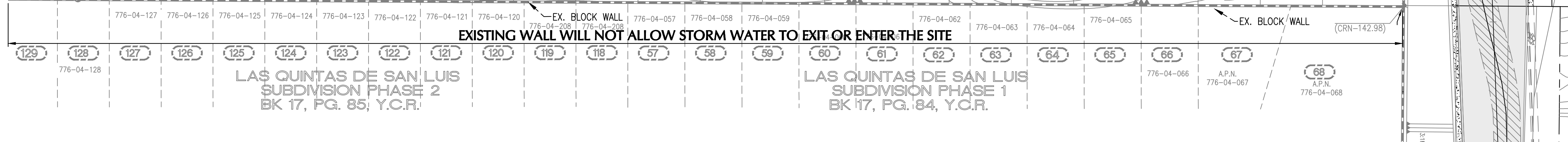
CONTRACTOR TO IMPLEMENT EFFECTIVE CONTROL MEASURES TO MINIMIZE TRACKING OF SEDIMENTS, DEBRIS AND OTHER POLLUTANTS FROM VEHICLES AND EQUIPMENT LEAVING THE SITE DURING CONSTRUCTION. EXACT PLACEMENT, DURING VARIOUS PHASES OF CONSTRUCTION, TO BE DETERMINED BY THE CONTRACTOR.

- LEGEND**
- DESIGNATED WASHOUT AREA
 - DUST CONTROL
 - STABILIZED CONSTRUCTION ENTRANCE
 - PROTECTED STORAGE AREA
 - SILT FENCE
 - STRAW BALE BARRIERS
 - CURB INLET PROTECTION (GRAVEL BAG, FILTER BAG, ROCK SOCK)
 - AREA INLET DRAIN PROTECTION (GRAVEL BAG, FILTER BAG, ROCK SOCK)
 - PIPE OUTLET CONDITIONS
 - STRAW WATTLES (SEDIMENT LOG/FIBER ROLL)
 - WORK ZONE IDENTIFICATION SIGN
 - DRAINAGE FLOW ARROWS

AREA
DISTURBED AREA = 28.75 ACRES

OWNER/DEVELOPER
RIEDEL HOLDINGS, L.L.C.
P.O. BOX 1649
SAN LUIS, AZ 85349

FLOOD ZONE DESIGNATION
THE PROPERTY IS LOCATED IN FLOOD PLAIN ZONE X (AREAS OF 0.2% ANNUAL CHANCE FLOOD; AREAS OF 1% ANNUAL CHANCE FLOOD WITH AVERAGE DEPTHS OF LESS THAN 1 FOOT OR WITH DRAINAGE AREAS LESS THAN 1 SQUARE MILE; AND AREAS PROTECTED BY LEVEES FROM 1% ANNUAL CHANCE FLOOD) AS DETERMINED BY THE FEMA FEDERAL INSURANCE RATE MAPS (FIRM MAP 04027C 1820F)



LAS QUINTAS DE SAN LUIS SUBDIVISION PHASE 2 BK 17, PG. 85, Y.C.R.

LAS QUINTAS DE SAN LUIS SUBDIVISION PHASE 1 BK 17, PG. 84, Y.C.R.



UTILITY DISCLAIMER
THE UNDERGROUND UTILITIES SHOWN HAVE BEEN LOCATED FROM THE FIELD SURVEY INFORMATION AND EXISTING DRAWINGS. THE SURVEYOR MAKES NO GUARANTEE THAT THE UNDERGROUND UTILITIES SHOWN COMPRISE ALL SUCH UTILITIES IN THE AREA, EITHER IN SERVICE OR ABANDONED. THE SURVEYOR FURTHER DOES NOT WARRANT THAT THE UNDERGROUND UTILITIES SHOWN ARE IN THE EXACT LOCATION INDICATED ALTHOUGH HE DOES CERTIFY THAT THEY ARE LOCATED AS ACCURATELY AS POSSIBLE FROM INFORMATION AVAILABLE. THE SURVEYOR HAS NOT PHYSICALLY LOCATED THE UNDERGROUND UTILITIES.

DRAWINGS ISSUE RECORD:

DATE:	
-------	--

DAHL, ROBINS & ASSOCIATES, INC.
1660 S. 6th Avenue
Yuma, AZ 85364
Phone: (928) 819-0825
Fax: (928) 819-0826
www.dahlrobs.com

LAS QUINTAS DE SAN LUIS 2 SUBDIVISION
WEST OF AVE H SOUTH SIDE OF CO. 22ND STREET
SAN LUIS, ARIZONA
SWPPP



DATE:	JAN 2017
SURVEYED BY:	EDIAS
DESIGNED BY:	SRM
DRAWN BY:	DRA
CHECKED BY:	KAD
PROJECT NO.:	16284
SHEET	OF
2	3

1/17/2017 9:49 AM Z:\m2016\16284\Drawings\SWPPP_02.dwg