

# SAN LUIS PORT SUBDIVISION PHASE 1

## LEGEND

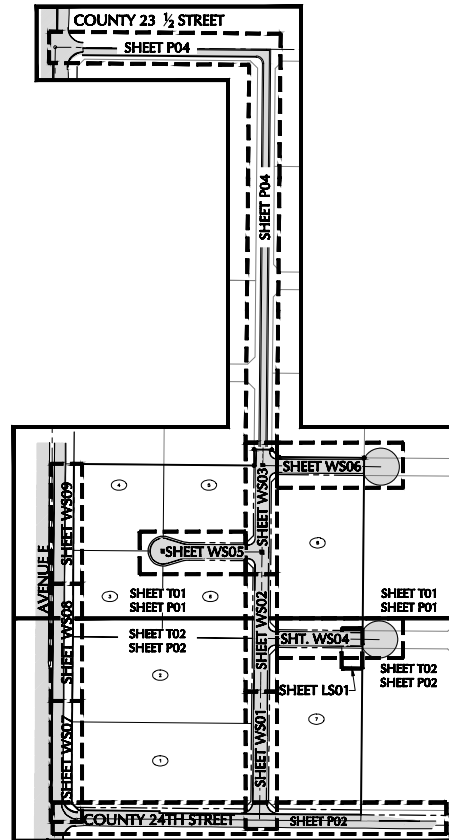
○	FOUND ½" REBAR UNLESS NOTED OTHERWISE
---	EXISTING CENTER LINE
---	EXISTING RIGHT OF WAY LINE
---	SUBDIVISION PROPERTY LINE
---	EXISTING WATER LINE
---	EXISTING GAS LINE
---	EXISTING FIBER OPTIC LINE
---	EXISTING TELEPHONE LINE
---	EXISTING ELECTRIC OVERHEAD LINE
---	EXISTING TRAFFIC SIGNAL UNDERGROUND LINE
---	EXISTING SEWER FORCE MAIN LINE
▨	EXISTING ASPHALT PAVEMENT
●	EXISTING WATER VALVE
○	EXISTING SEWER FORCE MAIN MANHOLE
□	EXISTING ELECTRIC BOX
□	EXISTING TELEPHONE JUNCTION BOX
+	EXISTING SIGN
X 190.00	EXISTING GROUND ELEVATION
X A 190.00	EXISTING ASPHALT ELEVATION
X S 190.00	EXISTING CURB AND GUTTER ELEVATIONS
○	NEW BOUNDARY SURVEY
■	NEW SURVEY MONUMENT
▨	NEW ASPHALT PAVEMENT
▨	NEW CONCRETE
▨	NEW ABC
W	NEW WATER LINE
S	NEW SANITARY SEWER LINE
○	NEW SANITARY SEWER MANHOLE
▼	NEW THRUST BLOCK
○	NEW WATER VALVE
+	NEW FIRE HYDRANT
○	NEW WATER METER
○	NEW BLOW OFF VALVE
X B 191.00	NEW ABC ELEVATION
X A 191.00	NEW ASPHALT ELEVATION
X C 191.00	NEW CURB ELEVATION
X D 191.00	NEW CURB AND GUTTER ELEVATION

## UTILITY WARNING

THE UNDERGROUND UTILITIES SHOWN HAVE BEEN LOCATED FROM FIELD SURVEY INFORMATION AND EXISTING DRAWINGS. THE SURVEYOR MAKES NO GUARANTEE THAT THE UNDERGROUND UTILITIES SHOWN COMPRISE ALL SUCH UTILITIES IN THE AREA, EITHER IN SERVICE OR ABANDONED. THE SURVEYOR FURTHER DOES NOT WARRANT THAT THE UNDERGROUND UTILITIES SHOWN ARE IN THE EXACT LOCATION INDICATED ALTHOUGH HE DOES CERTIFY THAT THEY ARE LOCATED AS ACCURATELY AS POSSIBLE FROM INFORMATION AVAILABLE. THE SURVEYOR HAS NOT PHYSICALLY LOCATED THE UNDERGROUND UTILITIES.

## BENCHMARK

CHISELED "X" IN SOUTHEAST CORNER OF CONCRETE SLAB AS SHOWN ON SHEET T01 ELEVATION: 160.81'

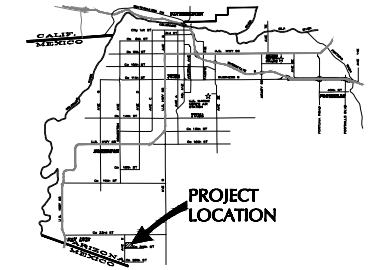


## INDEX SHEET

C01	COVER AND INDEX SHEET
PLAT	SAN LUIS PORT SUBDIVISION - PHASE I PLAT
T01	TOPOGRAPHIC SURVEY - NORTH AREA
T02	TOPOGRAPHIC SURVEY - SOUTH AREA
P01	PAVING AND GRADING PLAN - NORTH AREA
P02	PAVING AND GRADING PLAN - SOUTH AREA
P03	24TH STREET STRIPING PLAN
P04	EMERGENCY ACCESS ROAD - BORDER HEALTH BLVD. & COUNTY 23 1/2 STREET
WS01	WATER AND SEWER PLAN - BORDER HEALTH BLVD., STA:10+00 TO STA:14+50
WS02	WATER AND SEWER PLAN - BORDER HEALTH BLVD., STA:14+50 TO STA:16+50
WS03	WATER AND SEWER PLAN - BORDER HEALTH BLVD., STA:18+50 TO STA:23+00
WS04	WATER AND SEWER PLAN - RICHARDS ROAD, STA:10+00 TO STA:14+02.19
WS05	WATER AND SEWER PLAN - SHAOLE STREET, STA:10+00 TO STA:13+37.14
WS06	WATER AND SEWER PLAN - PACKARD PKWY, STA:10+00 TO STA:14+02.19
WS07	WATER AND SEWER PLAN - AVENUE E, STA:0+00 TO STA:4+00
WS08	WATER AND SEWER PLAN - AVENUE E, STA:4+00 TO STA:8+50
WS09	WATER AND SEWER PLAN - AVENUE E, STA:8+50 TO STA:12+50
LS01	LIFT STATION SITE AND GRADING PLAN
LS02	LIFT STATION DETAIL SHEET
D01	PAVING AND GRADING DETAILS
D02	WATER AND SEWER DETAILS
D03	WATER AND SEWER DETAILS
D04	WATER AND SEWER DETAILS
D05	PAVING AND GRADING AND MISC. DETAILS
D06	PAVING AND GRADING AND MISC. DETAILS
D07	MISC. DETAILS
L01	LANDSCAPING PLAN - AVENUE E
L02	LANDSCAPING PLAN - 24TH STREET
L03	IRRIGATION PLAN - AVENUE E
L04	IRRIGATION PLAN - 24TH STREET
L05	LANDSCAPE/IRRIGATION DETAILS
S-1.1	SHADE STRUCTURE
E01	STREET LIGHTING PLAN - NORTH AREA
E02	STREET LIGHTING PLAN - SOUTH AREA
E03	LIFT STATION ELECTRICAL SITE PLAN
E04	LIFT STATION ELECTRICAL ONE-LINE DIAGRAM
E05	LIFT STATION ELECTRICAL NOTES & DETAILS

## OWNER/SUBDIVIDER

SAN LUIS PORT L.L.C., AN ARIZONA LIMITED LIABILITY COMPANY  
833 E. PLAZA CIRCLE, SUITE 200  
YUMA, AZ 85365



VICINITY MAP  
NTS

## NOTE:

- SEE SUBDIVISION PLAT FOR COMPLETE DIMENSIONS OF CENTERLINE ROAD ALIGNMENTS.



## SAN LUIS PORT SUBDIVISION PHASE 1

### COVER & INDEX SHEET



SCALE:	AS SHOWN
DATE:	OCT, 2017
DES. BY:	S.G.
DRAWN BY:	R.N.
SURVEYED BY:	R.S.
JOB. No.:	015-0128
FILE No.:	
SHEET	- OF
C01	

N:\2015\0115-0128\_San\_Luis\_Port\_Subdivision\0115-0128\_San\_Luis\_Port\_Subdivision\_Cover.dwg

THE USE OF THESE DRAWINGS IS LIMITED TO THE ORIGINAL SITE OF WORK. THEY ARE PREPARED AND PUBLISHED IN THE BEST OF PROFESSIONAL OPINION AND WITHOUT LIABILITY. THE USER OF THESE DRAWINGS SHALL BE RESPONSIBLE FOR THE ORIGINAL SITE OF WORK. THESE DRAWINGS ARE NOT TO BE USED FOR ANY OTHER PROJECTS WITHOUT THE WRITTEN CONSENT OF THE ENGINEER. THE ENGINEER SHALL BE RESPONSIBLE FOR THE ACCURACY OF THESE DRAWINGS.

