

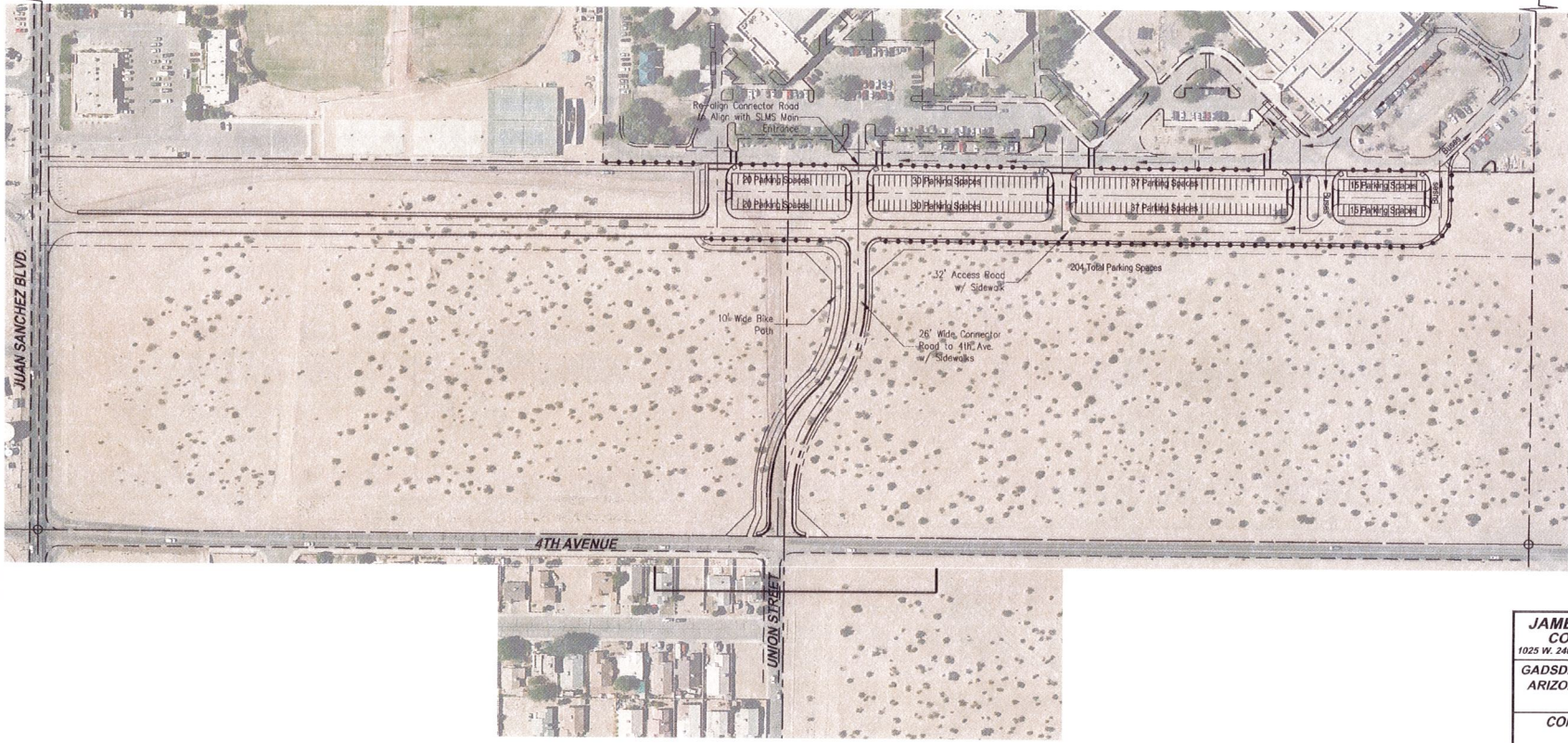
FD AC FLUSH  
WITH PAVEMENT  
LS19817 2012

N0°26'35"E 2641.35'(M) 2640.00'(R4)

FD BC IN HH



0 100' 200'  
SCALE: 1" = 100'



**JAMES DAVEY AND ASSOCIATES  
CONSULTING CIVIL ENGINEERS**

1025 W. 24th Street, Ste. #2 - YUMA, AZ 85364 - (928) 782-7926

**GADSDEN ELEMENTARY SCHOOL DISTRICT  
ARIZONA DESERT ELEMENTARY SCHOOL  
SAN LUIS MIDDLE SCHOOL**

**CONCEPTUAL LAYOUT OF ACCESS  
ROADS AND PARKING  
ALTERNATIVE 4**

PREPARED FOR: GADSDEN ELEMENTARY SCHOOL DISTRICT #32 1453 N. MAIN STREET SAN LUIS, AZ 85349
DESIGNED BY: J.V.D.
DRAWN BY: O.J.Z.
APPROVED BY: J.V.D.
SHEET C-1
SEPTEMBER 24, 2015



GSD-01