



NOTICE OF WORK SESSION

In accordance with §38-431.01 of the Arizona Revised Statutes of the State of Arizona, notice is hereby given to the Members of City Council and to the general public that the Mayor and Council of the City of San Luis, Arizona, will hold a Work Session meeting at 6:30 p.m., Wednesday, July 5, 2017. The Work Session will take place at the City Council Chambers, located at 1090 E. Union Street, San Luis, Arizona, 85349. Everyone from the public is invited to attend the open meeting.

In accordance with the Americans with Disabilities Act (ADA) and Section 504 of the Rehabilitation Act of 1973, the City of San Luis does not discriminate on the basis of disability in the admission of or access to, or treatment of employment in its programs, activities, or services. For information regarding rights and provisions of the ADA or Section 504, or to request reasonable accommodations for participation in City programs, activities or services contact: ADA/Section 504 Coordinator, City of San Luis Human Resources Department, 1090 E. Union Street, San Luis, Arizona, 85349; (928) 341-8520.

Notice is hereby given that pursuant to A.R.S. §1-602.A.9, subject to certain specified statutory exceptions, parents have a right to consent before the State or any of its political subdivisions make a video or audio recording of a minor child. Meetings of the City Council are audio and/or video recorded, and, as a result, proceedings in which children are present may be subject to such recordings. Parents in order to exercise their rights may either file written consent with the City Clerk to such recordings, or take personal action to ensure that their child or children are not present when a recording may be made. If a child is present at the time a recording is made, the City will assume that the rights afforded parents pursuant to A.R.S. §1-602.A.9 have been waived.

THIS NOTICE IS GIVEN BY:

/s/ Sonia Cornelio, City Clerk

AVISO DE SESION DE TRABAJO

De acuerdo con los Estatutos del Estado de Arizona A.R.S. §38-431.01, se le informa a los miembros del Cabildo y al público en general que el Alcalde y el Cabildo, tendrán una Sesión de Trabajo a las 6:30 p.m., el día Miércoles, 5 de Julio del 2017. La junta se llevará a cabo en la Sala del Cabildo, ubicada en el 1090 E. Union Street, San Luis, Arizona, 85349. El público está cordialmente invitado a la junta.

De acuerdo con el Acta de Americanos con Discapacidades y la Sección 504 del Acta de Rehabilitación del 1973, la Ciudad de San Luis, Arizona no discrimina por causa de discapacidad la admisión y acceso a sus programas, actividades, servicios o en el trato en cuanto a empleo. Para más información referente a derechos y provisiones del Acta de Americanos con Discapacidades o Sección 504, o para solicitar adaptaciones que sean razonables para la participación en programas, actividades o servicios de la Ciudad, contactar al: Coordinador del Acta de Americanos con Discapacidades/Sección 504, Departamento de Recursos Humanos de la Ciudad de San Luis, Arizona, ubicado en el 1090 E. Union Street, San Luis, Arizona, 85349; (928) 341-8520.

Por medio de este aviso y de acuerdo con los Estatutos del Estado de Arizona A.R.S §1-602.A.9, sujeto a ciertas excepciones reglamentarias, los padres de familia tienen el derecho de dar el consentimiento ante el Estado o cualquiera de sus subdivisiones políticas para hacer una grabación de audio o video de su hijo menor de edad. Las juntas del Cabildo se graban en audio y/o video y como resultado, el hecho de que haya menores presentes puede ser sujeto a que sean grabados. Para que los padres de familia puedan ejercer sus derechos pueden dar el consentimiento por escrito con la Secretaria de la Ciudad a tal grabación, o tomar acción personal para asegurarse que su hijo menor no esté presente cuando la grabación se lleve a cabo. Si un menor de edad está presente en el momento de la grabación, la Ciudad asumirá que los padres de familia están cediendo los derechos sobre una posible grabación de acuerdo con los Estatutos del Estado de Arizona A.R.S. §1-602.A.9.

ESTE AVISO ES DADO POR:

/f/ Sonia Cornelio, Actuaría de la Ciudad



AGENDA
Work Session
San Luis City Council
San Luis Council Chambers
1090 E. Union Street
San Luis, AZ 85349
July 5, 2017
6:30 p.m.

PLEASE TAKE NOTICE THAT MEMBERS OF THE CITY COUNCIL WILL ATTEND EITHER IN PERSON, TELEPHONE, OR VIDEO CONFERENCE COMMUNICATION; THE MAYOR OR ACTING MAYOR FOR THIS MEETING MAY CHANGE THE ORDER OF THE ITEMS.

- 1. CALL TO ORDER/ROLL CALL**
- 2. AGENDA ITEMS:**
 - 2. A.** Discussion and possible directions to staff on any and all matters regarding the purchase of a new Caterpillar 918M Wheel Loader for Public Works Department, Water Division. **(Manuel Rojas, Assistant Public Works Director)**
 - 2. B.** Discussion and possible directions to staff on any and all matters regarding the purchase of a new 70 horse power FLYGT sewer pump for Lift Station 300 for Public Works Department, Wastewater Division. **(Manuel Rojas, Assistant Public Works Director)**
 - 2. C.** Discussion and possible directions to staff on any and all matters regarding authorization to purchase a new Chevy Colorado, 4x2 truck for the Department of Public Works, Water Division. **(Manuel Rojas, Assistant Public Works Director)**
 - 2. D.** Discussion and possible directions to staff on any and all matters regarding the purchase of a new Vehicle Gateway Base Station System (VGB) for Public Works Department, Water Division. **(Manuel Rojas, Assistant Public Works Director)**
 - 2. E.** Discussion and possible directions to staff on any and all matters regarding Variance Case No. 2017-0430. A request by Linda Speakman on behalf of Jofco Inc., owner, for a Variance to install a six (6) foot fence on the property line instead of the 3 feet 6 inches required. The property is located at 517 N. 1st Avenue, San Luis, Arizona. **(Jose A. Guzman, Acting Planning and Zoning Director)**
- 3. DISCUSSION ITEMS:**
 - 3. A.** Discussion and possible directions to staff on any and all matter regarding the position of Vice-Mayor. **(Ruben Walshe, Council Member)**
 - 3. B.** Discussion and possible directions to staff on any and all matters regarding update on current Capital Improvement Projects. **(Ruben Walshe, Council Member and Eulogio Vera, Public Works Director)**

3. C. Discussion and possible directions to staff on any and all matters regarding an update on hot water issues. **(Ruben Walshe, Council Member and Eulogio Vera, Public Works Director)**

4. **ADJOURNMENT**

IN THE EVENT A MAJORITY OF THE COUNCIL IS NOT PRESENT, AN INFORMAL WORK SESSION MAY BE HELD.



AGENDA ITEM REVIEW FORM

Work Session

2.A.

Meeting Date: 07/05/2017

Department Head: Eulogio Vera, Public Works Director, Public Works Department

Submitted By: Manuel Rojas, Assistant Public Works Director, Public Works Department

Action Requested: Discussion Item - No Action to be Taken

ITEM:

Discussion and possible directions to staff on any and all matters regarding the purchase of a new Caterpillar 918M Wheel Loader for Public Works Department, Water Division. **(Manuel Rojas, Assistant Public Works Director)**

SUMMARY:

Staff contacted the local Caterpillar Machinery dealer in Yuma, Arizona and requested a bid, National IPA, City of Tucson #120377. Subject purchase provides a saving of over \$50,000.00 of list price, and \$4,467.75 savings over National IPA contract bid price. The CAT 918M wheel loader purchase would provide increase efficiency in Water Division operations and Public Works Yard. The CAT 918M wheel Loader comes with a set of lifting forks, an advantage for loading and unloading heavy equipment. Under San Luis City Code-Purchasing Section 36.01(H), Council may waive formal purchase procedures. Justification for the waiver here is that bidding likely will not bring a lower cost since it went out to bid under the National IPA contract and staff was able to get it cheaper than that. Staff recommends the purchase of a Caterpillar 918M wheel loader, heavy equipment for Public Works, Water Division in the amount quoted **\$132,186.83**.

RECOMMENDATION / SUGGESTED MOTION:

Discussion and possible directions to staff only, no action.

Supporting information not attached to the Agenda Item Review Form:

N/A

Document to be Recorded?: No

N/A

Fiscal Impact

IS THERE FISCAL IMPACT ASSOCIATED WITH THIS ITEM:	Yes
CITY/STATE/FEDERAL FUNDS:	Enterprise Funds
TOTAL:	\$143,372.48
BUDGETED AMOUNT:	\$145,000.00
AVAILABLE AMOUNT TO TRANSFER:	N/A
ACCT NAME & GL#/REMAINING BALANCE BEFORE PURCHASE:	300-302-90000 Capital Outlay - Equipment \$524,100.00

FISCAL IMPACT STATEMENT (IF THIS IS A BUDGET TRANSFER, YOU MUST ATTACH THE BUDGET ADJUSTMENT FORM):

Fiscal Year 2018 approved CAT 918M Wheel Loader equipment purchase for Public Works - Water Division.

300-302-90000 Capital Outlay - Equipment \$524,100.00

Attachments

National IPA Bid
CAT 918M Brochure
CAT Executive Summary



Attention To: City of San Luis
 Dealer Account Manager: Joe Pray
 918M Wheel Loaders
 6/14/2017

City Of Tucson #120377 Bid Pricing

Machine	
Machine List Price	\$177,157.00
Member Discount (\$)	\$46,060.82
Freight	\$0.00
Machine Price	\$131,096.18
Work Tools	
Work Tool List Price	\$3,104.00
Member Discount (\$)	\$465.60
Work Tools Price	\$2,638.40
Agency Added Costs	
	\$2,920.00
Total Bid Price	\$136,655

Trade	
Year	0
Make	0
Model	0
Serial Number	0
Hours	0
Trade Allowance	\$0.00
Lien Amount	\$0.00
Allowance Valid Until	7/14/2017

Work Tools	
Fork Carriage with 48" Tines	\$3,104.00
None	\$0.00
None	\$0.00
None	\$0.00
None	\$0.00
None	\$0.00

Options (Not Included In Price)	
None	\$0.00
None	\$0.00
None	\$0.00
None	\$0.00
None	\$0.00

Final Price

Machine	
Machine List Price	\$177,157.00
Discount	\$53,511.38
Machine Price	\$123,645.62

Work Tools	
Work Tools List Price	\$3,104.00
Discount	\$765.17
Work Tools Price	\$2,338.83

Additional Cost To Sale	
Pre-Delivery (Fuel, Cleaning and Inspection)	\$821.28
Factory To Dealer Freight	\$0.00
Delivery To Agency Yard	\$585.79
Field Service Travel Coverage For Warrantable Repairs:12 Months	\$0.00
Sale Configuration Charges: Tool Box, Beacon, Radio	\$1,875.31
Other	\$0.00
Other	\$0.00
Other	\$0.00

Agency Added Costs	
Extended Warranty For 3 Years Or 4000 Hours Premier Coverage	\$2,920.00
None	\$0.00
None	\$0.00
None	\$0.00
None	\$0.00
None	\$0.00

Price	
Subtotal Price	\$132,186.83
Trade Allowance Less Lien Amount	\$0.00
Tax Rate	8.462%
Total Invoice Price	\$143,372.48

Savings Summary (Including Agency Added Costs)	
Contract #120377 Bid Price	\$136,654.58
City of San Luis Price	\$132,186.83
Net Savings From Bid	\$4,467.75



Cat[®] 918M

COMPACT WHEEL LOADER

FEATURES:

- **Cat[®] Optimized Z-bar Loader Linkage** – The Cat Optimized Z-bar Loader linkage combines the digging efficiency of a traditional Z-bar with tool carrier capabilities for great performance and versatility. With parallel lift and high tilt forces throughout the working range you can safely and confidently handle loads with precise control.
- **Work Tools** – The 918M features the Cat exclusive, Performance Series Buckets, as well as high visibility pallet forks. These tools enhance productivity and are available with either an Integrated Toolcarrier (IT) or ISO (wide) coupler style. Legacy coupler tools such as brooms, grapple buckets, multi-purpose buckets and other work tools remain compatible.
- **Hydraulics and Controls** – State of the art electro-hydraulic system provides low effort, fine control with fast cycle times. All-in-one joystick helps keep eyes on the work. Operator can adjust machine responsiveness with the push of a button, which allows the operator to set up the machine exactly the way they want it based on the application. High Flow option allows for the use of even the most demanding work tools.
- **Tuned Drivetrain** – Smooth shifting and powerful acceleration is matched with modulated hydrostatic braking in the inching/braking pedal, creating a rhythm for material moving. Creeper and electronic engine speed control makes broom and snow blower work easy. Operator tunes between smooth or aggressive shifting with the push of a button.
- **Cab** – All around visibility is further enhanced with the availability of a rearview camera. The deluxe cab ensures operator comfort with a heated, air suspension seat and easy to use controls. Available features such as Implement and Hystat Aggressiveness, Ride Control, Lift and Tilt Kickouts, Engine Speed Control and Rimpull Control allow the operator to customize the machine via a soft touch keypad.
- **Serviceability** – Extended service intervals and excellent service access make daily checks quick and easy allowing you to get to work sooner.
- **Efficiently Powerful** with its high full turn tipping loads, powerful breakout forces and increased engine power the M Series delivers a balanced solution for all customer applications.
- **Standard Fuel Savings Features** such as Eco Mode, On Demand Cooling Fan, and Auto Engine Idle Shutdown make the 918M both powerful and fuel efficient.

Specifications

Engine

Engine Model	Cat C4.4 ACERT™	
Maximum Gross Power:		
Maximum Engine Speed	2,350 RPM	
SAE J1995	87 kW	117 hp
ISO 14396	86 kW	115 hp
ISO 14396 (DIN)	86 kW	117 hp
Rated Net Power:		
Rated Engine Speed	2,200 RPM	
SAE J1349	83 kW	112 hp
ISO 9249	84 kW	113 hp
ISO 9249 (DIN)	84 kW	114 hp
Displacement	4.4 L	268 in ³
Bore	105 mm	4.13 in
Stroke	127 mm	5.00 in

Engine (continued)

Maximum Gross Torque:		
SAE J1995	504 N-m	372 lbf-ft
ISO 14396	500 N-m	369 lbf-ft
Maximum Net Torque:		
SAE J1349	490 N-m	361 lbf-ft
ISO 9249	495 N-m	365 lbf-ft

- Engine meets U.S. EPA Tier 4 Final/EU Stage IV emission standards.
- Net power advertised is the power available at the flywheel plus front drive implement pump when the engine is equipped with fan, air cleaner, muffler and alternator.



918M Compact Wheel Loader

Buckets

Bucket Capacities – General Purpose	1.3-1.9 m ³	1.7-2.5 yd ³
-------------------------------------	------------------------	-------------------------

Steering

Steering Articulation Angle (each direction)	40 degrees	
Maximum Flow – Steering Pump	82 L/min	21.7 gal/min
Maximum Working Pressure – Steering Pump	22 000 kPa	3,190 psi
Steering Cycle Times (full left to full right):		
At 2,350 RPM: 90 RPM steering wheel speed	2.3 seconds	
Number of Steering Wheel Turns – full left to full right or full right to full left	3.4 turns	

Loader Hydraulic System

Maximum Flow – Implement Pump	165 L/min	43.6 gal/min
3rd Function, Maximum Flow, Standard	95 L/min	25 gal/min
3rd Function, Maximum Flow, High	150 L/min	40 gal/min
4rd Function, Maximum Flow	95 L/min	25 gal/min
Maximum Working Pressure – Implement Pump	28 000 kPa	4,061 psi
Relief Pressure – Tilt Cylinder	32 000 kPa	4,641 psi
3rd Function Relief Pressure	32 000 kPa	4,641 psi
4th Function Relief Pressure	32 000 kPa	4,641 psi

Hydraulic Cycle Times:

Raise (ground level to maximum lift)	4.8 seconds	
Dump (at maximum reach)	1.8 seconds	
Rack Back	2.2 seconds	
Float Down (maximum lift to ground level)	2.7 seconds	
Total Cycle Time	11.5 seconds	

Note: All cycle times listed are with cylinder snubbing turned off.

Service Refill Capacities

Fuel Tank	154.0 L	40.7 gal
Cooling System	21.5 L	5.7 gal
Engine Crankcase	8.8 L	2.3 gal
Axles:		
Front	17 L	4.5 gal
Rear	17 L	4.5 gal
Hydraulic System (including tank)	98.0 L	25.9 gal
Hydraulic Tank	55.0 L	14.5 gal
Transmission	3.4 L	0.9 gal
Diesel Exhaust Fluid (DEF) Tank	18.9 L	5.0 gal

- DEF used in Cat SCR systems must meet the requirements outlined in the International Organization for Standardization (ISO) standard 22241-1.

Transmission

Forward and Reverse:		
Low Range, Speed Range 1*	10 km/h	6.3 mph
Low Range, Speed Range 2	20 km/h	12.5 mph
High Range	40 km/h	25 mph

*Creeper Control allows speed control from a stand still up to 10 km/h (6.3 mph). The Creeper Control will only work in Range 1.

Tires

Standard Size	17.5-25 12PR
Other Choices Include:	17.5-25 12PR L2
	17.5-R25 XHA * L3
	17.5-R25 * L2/L3 PC RM
	17.5-25 16PR L3, 3PC Rim
	17.5-25 GY L2/L3
	17.5-25 12PR L2, SNOW Flexport™

- Other tire choices are available. Contact your Cat dealer for details.
- In certain applications, the loader's productive capabilities may exceed the tire's tonnes-km/h (ton-mph) capabilities.
- Caterpillar recommends that you consult a tire supplier to evaluate all conditions before selecting a tire model.

Cab

ROPS	SAE J1040 MAY94, ISO 3471-1994
FOPS	SAE J/ISO 3449 APR98, Level II, ISO 3449 1992 Level II

- Cab and Rollover Protective Structures (ROPS) are standard in North America and Europe.
- The declared dynamic operator sound pressure levels per ISO 6396:2008*, when properly installed and maintained, is 77 dB(A).
- The labelled sound power level for the CE marked configurations when measured according to the test procedure and conditions specified in 2000/14/EC is 103 dB(A).

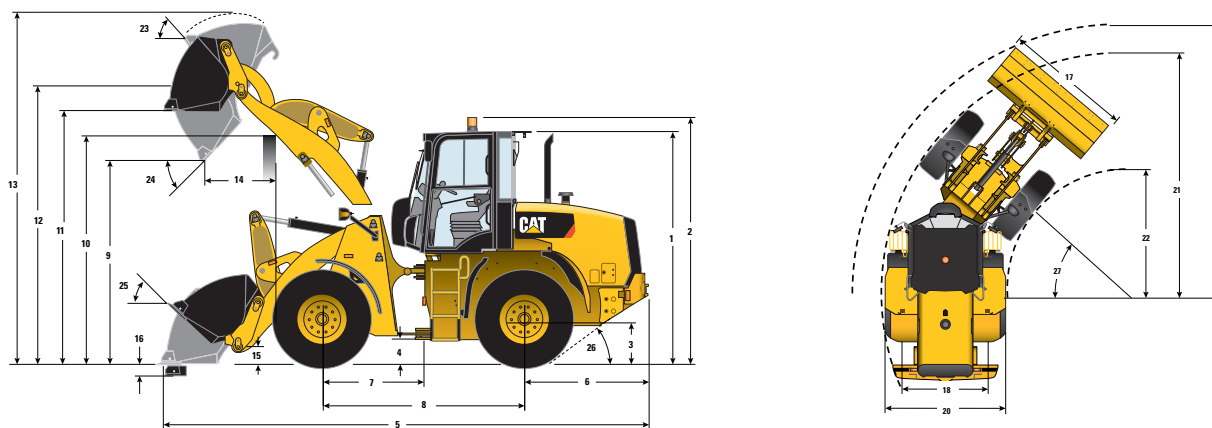
*The measurements were conducted with the cab doors and windows closed.

Axles

Front	Fixed
	Locking differential (standard)
Rear	Oscillating ±11 degrees
	Locking differential (standard)

918M Compact Wheel Loader

Dimensions and Operating Specifications (All dimensions are approximate. Dimensions vary with bucket and tire choice.)



	Standard Lift – IT		Standard Lift – ISO		Standard Lift – PO	
*Vary with bucket. **Vary with tire.						
** 1 Height: Ground to Cab	3110 mm	10'2"	3110 mm	10'2"	3110 mm	10'2"
** 2 Height: Ground to Beacon	3300 mm	10'9"	3300 mm	10'9"	3300 mm	10'9"
** 3 Height: Ground Axle Center	640 mm	2'1"	640 mm	2'1"	640 mm	2'1"
** 4 Height: Ground Clearance	438 mm	1'5"	438 mm	1'5"	438 mm	1'5"
* 5 Length: Overall	6652 mm	21'9"	6708 mm	22'0"	6583 mm	21'7"
6 Length: Rear Axle to Bumper	1615 mm	5'3"	1615 mm	5'3"	1615 mm	5'3"
7 Length: Hitch to Front Axle	1350 mm	4'5"	1350 mm	4'5"	1350 mm	4'5"
8 Length: Wheel Base	2700 mm	8'10"	2700 mm	8'10"	2700 mm	8'10"
* 9 Clearance: Bucket at 45 degrees	2838 mm	9'3"	2800 mm	9'2"	2882 mm	9'5"
** 10 Clearance: Load over Height	3381 mm	11'1"	3381 mm	11'1"	3381 mm	11'1"
** 11 Clearance: Level Bucket	3562 mm	11'8"	3562 mm	11'8"	3563 mm	11'8"
** 12 Height: Bucket Pin	3818 mm	12'6"	3818 mm	12'6"	3818 mm	12'6"
** 13 Height: Overall	4847 mm	15'10"	4882 mm	16'0"	4825 mm	15'9"
* 14 Reach: Bucket at 45 degrees	933 mm	3'0"	974 mm	3'2"	881 mm	2'10"
15 Carry Height: Bucket Pin	353 mm	1'1"	345 mm	1'1"	353 mm	1'1"
** 16 Dig Depth	61 mm	2.4"	61 mm	2.4"	60 mm	2.3"
17 Width: Bucket	2401 mm	7'10"	2401 mm	7'10"	2401 mm	7'10"
18 Width: Tread Center	1800 mm	5'10"	1800 mm	5'10"	1800 mm	5'10"
19 Turning Radius: Over Bucket	5410 mm	17'8"	5425 mm	17'9"	5390 mm	17'8"
20 Width: Over Tires	2259 mm	7'4"	2259 mm	7'4"	2259 mm	7'4"
21 Turning Radius: Outside of Tires	4877 mm	16'0"	4877 mm	16'0"	4877 mm	16'0"
22 Turning Radius: Inside of Tires	2563 mm	8'5"	2563 mm	8'5"	2563 mm	8'5"
23 Rack Angle at Full Lift	55 degrees		55 degrees		55 degrees	
24 Dump Angle at Full Lift	47 degrees		47 degrees		47 degrees	
25 Rack Angle at Carry	44 degrees		44 degrees		44 degrees	
26 Departure Angle	33 degrees		33 degrees		33 degrees	
27 Articulation Angle	40 degrees		40 degrees		40 degrees	
*Tipping Load – Straight (ISO 14397-1)	6903 kg	15,219 lb	6740 kg	14,859 lb	7272 kg	16,032 lb
*Tipping Load – Full Turn (ISO 14397-1)	5825 kg	12,837 lb	5681 kg	12,524 lb	6157 kg	13,574 lb
*Breakout Force	8480 kg	18,695 lb	7933 kg	17,489 lb	9113 kg	20,091 lb
*Operating Weight	9469 kg	20,876 lb	9491 kg	20,924 lb	9282 kg	20,463 lb

Dimensions listed are for a machine configured with general purpose bucket, bolt-on cutting edges, 80 kg (176 lb) operator, and 17.5 R25 (L2) tires.

918M Compact Wheel Loader

STANDARD EQUIPMENT

POWER TRAIN

- Cat C4.4 ACERT engine:
 - Common rail fuel injection
 - Tier 4 Final/Stage IV
- Caterpillar NO_x reduction system
- Fuel: Ultra Low Sulphur Diesel @ <15 ppm EPA/<10 ppm EU
- Engine oil: CJ-4
- Electric fuel pump with 4 micron filtration
- S-O-SSM port, transmission oil
- Hydrostatic transmission, 20 km/h (12.5 mph)
- Lube for life universal joints
- Forward – Neutral – Reverse on joystick
- 100% locking differentials
- Air cleaner, radial seal, dual filters
- Cooling fan, on demand
- Tires 17.5-25 12PR
- Integrated cyclone precleaner

LOADER END

- Parallel lift, optimized Z-bar loader

REGIONAL STANDARDS (as required)

- Back-up alarm
- Chocks, bucket tooth or edge
- Decals, roading speed
- Beacon
- Reflectors, roading
- Camera, rearview

HYDRAULICS

- Two valve, single lever joystick
- Diagnostic pressure taps
- S-O-S port, hydraulic oil
- Variable displacement piston pump
- Cylinder damping at kickout and end stops

ELECTRICAL

- 150 amp alternator
- Single 850 CCA maintenance free battery
- Rooding lights
- Battery disconnect switch

FLUIDS

- Extended life coolant antifreeze, protected to -36° C (-33° F)
- Cat Advanced HYDO 10 hydraulic oil

CHASSIS

- Front and rear fenders
- Lockable engine enclosure
- Recovery hitch
- Vandalism protection – locked service points

OPERATOR ENVIRONMENT

- ROPS/FOPS cab, pressurised and sound suppressed
- Implement lockout
- Electro-hydraulic implement controls
- Gauges:
 - Engine coolant temperature
 - Hydraulic oil temperature
 - Fuel level
 - Speedometer
 - Digital hour meter
 - DEF level indicator
- Warning system indicators:
 - Emission malfunction
 - Air filter restriction
 - Brake charge pressure low
 - Engine malfunction
 - Park brake applied
 - Electrical system voltage flow
 - Hydraulic oil filter bypass
 - Action indicator
- Seat:
 - Fabric or vinyl
 - Adjustable height, backrest, armrest
- Heater/defroster
- Tinted front glass, laminated
- Adjustable steering column
- Rear window defrost
- Lockable storage box
- Internal 12V power source
- External 12V power source

OPTIONAL EQUIPMENT

POWER TRAIN

- Secondary steering
- Sound suppression, EU Prep Package
- Extreme temperature engine coolant
- High speed option 40 km/h (25 mph)
- 918M tire options:
 - 17.5-25 12PR L2
 - 17.5-R25 XHA * L3
 - 17.5-R25 * L2/L3 PC RM
 - 17.5-25 16PR L3, 3PC Rim
 - 17.5-25 GY L2/L3
 - 17.5-25 12PR L2, SNOW
 - Flexport™

LOADER END

- Integrated tool carrier coupler
- Wide (ISO) coupler

HYDRAULICS

- Three valve, single lever joystick
- Four valve, single lever joystick
- High flow, third valve

ELECTRICAL

- Halogen lights, front and rear
- LED work lights, front and rear
- Heavy duty battery package
- Work tool wiring harness

FLUIDS

- Biodegradable hydraulic oil

CHASSIS

- Lockable toolbox
- Fenders, mud flaps

OPERATOR ENVIRONMENT

- ROPS/FOPS canopy or cab
- Premium heated, air suspension seat
- Heater and air conditioner
- Feature Package: Road/Load/Road & Load. Dependent on package selection, features included are:
 - Adjustable Rimpull
 - Ride Control
 - Adjustable Ground Speed Control
 - Implement Modulation
 - Hystat Aggressiveness
 - Throttle Lock and Adjust
 - Automatic Loader lift and bucket kickouts adjustable in cab
- Cat radio (Bluetooth)
- Rear blind
- Security system
- Retractable seat belt 75 mm (3")
- Rearview camera and screen (standard in EU)
- Product Link™

For more complete information on Cat products, dealer services, and industry solutions, visit us on the web at www.cat.com

© 2016 Caterpillar
All rights reserved

Materials and specifications are subject to change without notice. Featured machines in photos may include additional equipment. See your Cat dealer for available options.

CAT, CATERPILLAR, SAFETY.CAT.COM, their respective logos, "Caterpillar Yellow" and the "Power Edge" trade dress, as well as corporate and product identity used herein, are trademarks of Caterpillar and may not be used without permission.

AEHQ7803-01 (05-2016)
Replaces AEHQ7803
(EU, NACD)





Heavy Equipment, Parts, Accessories, Supplies & Related Services
Executive Summary

Lead Agency: City of Tucson, AZ
RFP Issued: September 27, 2016
Date Open: November 14, 2016

Solicitation: RFP #161534
Pre-Proposal Date: October 12, 2016
Proposals Received: 4

Awarded to: Caterpillar

The City of Tucson, AZ Department of Procurement issued RFP #161534 on September 27, 2016 to establish a national cooperative contract for heavy equipment, parts, accessories, supplies and related services.

The solicitation included cooperative purchasing language in the National Contract Requirements section:

The City, as the Principal Procurement Agency, as defined in Attachment A, has partnered with the National Intergovernmental Purchasing Alliance Company (“National IPA”) to make the resultant contract (also known as the “Master Agreement” in materials distributed by National IPA) from this solicitation available to other public agencies nationally, including state and local governmental entities, public and private primary, secondary and higher education entities, non-profit entities, and agencies for the public benefit (“Public Agencies”), through National IPA’s cooperative purchasing program. The City is acting as the contracting agency for any other Public Agency that elects to utilize the resulting Master Agreement. Use of the Master Agreement by any Public Agency is preceded by their registration with National IPA as a Participating Public Agency in National IPA’s cooperative purchasing program. Attachment A contains additional information on National IPA and the cooperative purchasing agreement.

Notice of the solicitation was sent to potential offerors, as well as advertised in the following:

- Arizona Business Gazette
- City of Tucson Procurement Site
- Deseret News
- DJC Oregon
- Honolulu Star Advertiser
- Houston Chronicle
- National IPA Website
- New Jersey Herald
- Richmond Times
- San Bernardino Sun
- Seattle Daily Journal of Commerce
- The Advocate

- The Herald News
- The State South Carolina
- Times Union
- USA Today

On November 14, 2016 proposals were received from the following offerors:

- Caterpillar
- John Deere
- Sunbelt Rentals

The proposals were evaluated by an evaluation committee. Using the evaluation criteria established in the RFP, the committee elected to enter into negotiations with the top ranked firm, Caterpillar.

The City of Tucson, AZ, National IPA and Caterpillar successfully negotiated a contract and the City of Tucson executed the agreement with a contract effective date of May 1, 2017.

Contract includes: Heavy equipment, parts, accessories, supplies and related services

Term:

Initial one year agreement from May 1, 2017 through April 30, 2018, with option to renew for four (4) additional one-year periods through April 30, 2022.

Pricing/Discount:

Minimum discount off list price.

Serviced and supported by local Cat dealers.

Value Added Services:

- Financing options
- Used equipment
- Rentals
- Extended warranties
- Maintenance agreements
- Trade-in or Buyback options

National IPA Web Landing Pages: www.nationalipa.org/Vendors/Pages/Caterpillar.aspx



AGENDA ITEM REVIEW FORM

Work Session

2.B.

Meeting Date: 07/05/2017

Department Head: Eulogio Vera, Public Works Director, Public Works Department

Submitted By: Manuel Rojas, Assistant Public Works Director, Public Works Department

Action Requested: Discussion Item - No Action to be Taken

ITEM:

Discussion and possible directions to staff on any and all matters regarding the purchase of a new 70 horse power FLYGT sewer pump for Lift Station 300 for Public Works Department, Wastewater Division. **(Manuel Rojas, Assistant Public Works Director)**

SUMMARY:

During the upgrade of Lift Station 300, the 100 horse power Vaughn sewer pumps were installed. Over the years, staff has been repairing the sewer pumps every 2-3 years with an initial cost of \$12,000.00 and currently it has increased to \$17,000.00 per event. We currently have three (3) pumps at subject location, two (2) Vaughn pumps and one (1) FLYGT pump. Wastewater staff is continually looking for alternative pump brands that will provide efficiency, energy savings and minimized maintenance costs. In our collection system, we have several FLYGT sewer pumps, they have been working trouble free, other than general maintenance. With the installation of a second 70 horse power FLYGT sewer pump, we will be saving on electricity, 30 horse power pump difference due to design, hardened iron impeller/ring, and maintenance costs. Staff recommends the purchase of new FLYGT sewer pump for Lift Station 300. This is a sole-source purchase via James Cooke and Hobson, Inc. Under San Luis City Code-Purchasing Section 36.02 when, as in this purchase, there is only one provider, bidding is not required. Staff recommends purchase at the quoted price of **\$45,273.17**.

RECOMMENDATION / SUGGESTED MOTION:

Discussion and possible directions to staff only, no action.

Supporting information not attached to the Agenda Item Review Form:

N/A

Document to be Recorded?: No

N/A

Fiscal Impact

IS THERE FISCAL IMPACT ASSOCIATED WITH THIS ITEM:	Yes
CITY/STATE/FEDERAL FUNDS:	Enterprise Fund
TOTAL:	\$45,273.17
BUDGETED AMOUNT:	\$52,000.00
AVAILABLE AMOUNT TO TRANSFER:	N/A

ACCT NAME & GL#/REMAINING BALANCE BEFORE PURCHASE: 310-311-90000 Capital Outlay -
Equipment \$177,000.00

**FISCAL IMPACT STATEMENT (IF THIS IS A BUDGET TRANSFER, YOU MUST ATTACH THE
BUDGET ADJUSTMENT FORM):**

Fiscal Year 2017- 2018, approved purchase of a new 70 horse power FLYGT sewer pump for Lift
Station 300.

310-311-90000 Capital Outlay - Equipment, remaining balance before purchase \$177,000.00

Attachments

JCH Inc Quote
FLYGT Warranty



3501 E. Broadway Road Phoenix, AZ 85040-2833 Phone: (602) 243-0585 Fax: (602) 276-5402 www.jchinc.com

QUOTATION #061417-5JWF

Page 1 of 1

June 14, 2017

To: CITY OF SAN LUIS
LIFT STATION # 300

Job Name: REPLACEMENT FLYGT PUMP
MODEL: 3202.095
S/N: 1580041
SITE: LS # 300

Attn: MANUEL ROJAS, GILBERTO TORRES &
EULOGIO VERA

Location: SAN LUIS, AZ
Quotation By: Jim Feickert/Bruce Loring, P.E.
Bid Date:

Unless otherwise stated: Prices are firm for 30 days from bid date, payment terms are NET 30 DAYS from shipment. Prices do not include any sales and/or use taxes. Applicable taxes will be added to the invoice at the rate in effect at the time of shipment. Interest shall accrue on past due amounts at 1.5% per month. Freight terms are F.O.B. factory, full freight allowed.

Qty	Description	Each	Total
1	FLYGT MODEL NS3202.095 SUBMERSIBLE (FM LISTED) WASTEWATER PUMP, WITH 70 HP, 3/60/460, EXPLOSION-PROOF MOTOR AND 75 FT POWER CABLE, WITH FLS. IMPELLER CODE N-458.	\$41,688.00	\$41,688.00
1	PHOENIX SALES TAX @ 8.6%		\$3,585.17
	TOTAL		\$45,273.17

TO DUPLICATE EXISTING PUMP INSTALLED IN FIRST QUARTER OF 2016

STANDARD SHIPPING: 10-12 WEEKS A.R.O.
F.O.B. FACTORY, FULL FREIGHT ALLOWED
(SURFACE TRUCK FREIGHT PAID TO SAN LUIS)
PLUS APPLICABLE TAXES



WARRANTY

Xylem Water Solutions USA, Inc.

For the period defined, Xylem Water Solutions USA, Inc. offers a commercial warranty to the original End Purchaser against defects in workmanship and material on Flygt Products. Warranty covers Flygt parts and labor as outlined in **ADDENDUM – A**.

COVERAGE:

Xylem Water Solutions USA, Inc. will pay the cost of parts and labor during the warranty period, provided that the Flygt product, with cable attached, is returned prepaid to a Xylem Water Solutions USA, Inc. Authorized Service Facility for Flygt Product repairs. Coverage for Flygt parts and labor will be provided for the period shown in **ADDENDUM - A**. The warranty period will begin from date of shipment or date of a valid Start-up (For permanently installed pumps only). In cases where the Start-up date is used as the beginning of the warranty on a permanently installed Flygt pump, a Start-up Report completed by an approved service technician from a Xylem Water Solutions USA, Inc. Authorized Service Facility for Flygt products must be received by the Xylem Water Solutions USA, Inc. Area Service Manager for Flygt Products within thirty (30) days of the initial onset of the unit placed into service. If not received, the beginning of the warranty coverage will default to the Flygt product ship date. A Start-up for a permanently installed Flygt pump must occur within one (1) year from the date of shipment from a Xylem Water Solutions USA, Inc. authorized facility for Flygt Products or warranty will automatically default to ship date as start of warranty. (See **STORAGE** section) When using the start-up date as the beginning of the warranty, a copy of the Start-up Report will be required to support any Warranty Claims. Warranty on Flygt Dewatering pumps will begin with ship date only. No other date on Flygt Dewatering pumps will be considered.

Xylem Water Solutions USA, Inc.'s sole obligation under this Warranty for Flygt Products shall be to replace, repair or grant credit for Flygt Products upon Xylem Water Solutions USA, Inc.'s exclusive determination that the Flygt Product does not conform to the above warranty. In the event that the Flygt product is replaced, warranty on the replacement product will be equal to the balance remaining on the original product or ninety (90) days, which ever is greater.

MISUSE:

This Warranty shall not apply to any Flygt product or part of Flygt product which (i) has been subjected to misuse, misapplication, accident, alteration, neglect, or physical damage (ii) has been installed, operated, used and/or maintained in a manner which is in an application that is contrary to Xylem Water Solutions USA, Inc.'s printed instructions as it pertains to installation, operation and maintenance of Flygt Products, including but without limitation to (iii) operation of equipment without being connected to monitoring devices supplied with specific products for protection; or (iv) damaged due to a defective power supply, improper electrical protection, faulty installation or repair, ordinary wear and tear, corrosion or chemical attack, an act of God, an act of war or by an act of terrorism; or (v) has been damaged resulting from the use of accessory equipment not sold by Xylem Water Solutions USA, Inc. or not approved by Xylem Water Solutions USA, Inc. in connection with Flygt products.

WEAR PARTS:

This warranty does not cover costs for standard and/or scheduled maintenance performed, nor does it cover Flygt parts that, by virtue of their operation, require replacement through normal wear (aka: Wear Parts), unless a defect in material or workmanship can be determined by Xylem Water Solutions USA, Inc.. Wear Parts are defined as Cutters, Cutting Plates, Impellers, Agitators, Diffusers, Wear Rings (Stationary or Rotating), Volutes (when used in an abrasive environment), oil, grease, cooling fluids and/or any items deemed necessary to perform and meet the requirements of normal maintenance on all Flygt equipment.



WARRANTY

Xylem Water Solutions USA, Inc.

DISCLAIMERS:

(i) Xylem Water Solutions USA, Inc.'s warranties are null and void when Flygt Products are exported outside of the United States of America without the knowledge and written consent of Xylem Water Solutions USA, Inc.; (ii) Xylem Water Solutions USA, Inc. makes no independent warranty or representation with respect to parts or products manufactured by others and provided by Xylem Water Solutions USA, Inc. (however, Xylem Water Solutions USA, Inc. will extend to the Purchaser any warranty received from Xylem Water Solutions USA, Inc.'s supplier for such parts or products).

LIMITATIONS:

XYLEM WATER SOLUTIONS USA, INC. NEITHER ASSUMES, NOR AUTHORIZES ANY PERSON OR COMPANY TO ASSUME FOR XYLEM WATER SOLUTIONS USA, INC., ANY OTHER OBLIGATION IN CONNECTION WITH THE SALE OF ITS FLYGT EQUIPMENT. ANY ENLARGEMENT OR MODIFICATION OF THIS WARRANTY BY A FLYGT PRODUCT DISTRIBUTOR, OR OTHER SELLING AGENT SHALL BECOME THE EXCLUSIVE RESPONSIBILITY OF SUCH ENTITY.

THE FOREGOING WARRANTY IS EXCLUSIVE AND IN LIEU OF ANY AND ALL OTHER EXPRESS OR IMPLIED WARRANTIES, GUARANTEES, CONDITIONS OR TERMS OF WHATEVER NATURE RELATING TO FLYGT PRODUCT(S), INCLUDING AND WITHOUT LIMITATION ANY IMPLIED WARRANTIES OF MERCHANTABILITY AND FITNESS FOR A PARTICULAR PURPOSE WHICH ARE HEREBY EXPRESSLY DISCLAIMED AND EXCLUDED. PURCHASER'S EXCLUSIVE REMEDY AND XYLEM WATER SOLUTIONS USA, INC.'S AGGREGATE LIABILITY FOR BREACH OF ANY OF THE FOREGOING WARRANTIES IS LIMITED TO REPAIRING OR REPLACING FLYGT PRODUCTS AND SHALL IN ALL CASES BE LIMITED TO THE AMOUNT PAID BY THE PURCHASER HEREUNDER. IN NO EVENT IS XYLEM WATER SOLUTIONS USA, INC. LIABLE FOR ANY OTHER FORM OF DAMAGES, WHETHER DIRECT, INDIRECT, LIQUIDATED, INCIDENTAL, CONSEQUENTIAL, PUNITIVE, EXEMPLARY OR SPECIAL DAMAGES, INCLUDING BUT NOT LIMITED TO LOSS OF USE, LOSS OF PROFIT, LOSS OF ANTICIPATED SAVINGS OR REVENUE, LOSS OF INCOME, LOSS OF BUSINESS, LOSS OF PRODUCTION, LOSS OF OPPORTUNITY OR LOSS OF REPUTATION.

XYLEM WATER SOLUTIONS USA, INC. WILL NOT BE HELD RESPONSIBLE FOR TRAVEL EXPENSES, RENTED EQUIPMENT, OUTSIDE CONTRACTOR'S FEES, OR ANY EXPENSES ASSOCIATED WITH A FLYGT PRODUCT REPAIR SHOP NOT AUTHORIZED BY XYLEM WATER SOLUTIONS USA, INC. U.S.A., INC. REIMBURSEMENT COSTS FOR CRANES AND/OR ANY SPECIAL EQUIPMENT USED IN CONJUNCTION FOR THE REMOVAL AND/OR REINSTALLATION OF ANY FLYGT EQUIPMENT IS NOT COVERED UNDER THIS WARRANTY.

ANY UNAUTHORIZED ALTERATIONS TO SUPPLIED FLYGT EQUIPMENT USED WITHOUT XYLEM WATER SOLUTIONS USA, INC. SUPPLIED FLYGT BRAND CABLE OR CONTROLS WILL NOT BE COVERED UNDER THIS WARRANTY, UNLESS IT CAN BE PROVEN SUCH ANCILLARY EQUIPMENT IS SUITABLE FOR THE PURPOSE AND EQUAL TO XYLEM WATER SOLUTIONS USA, INC. SUPPLIED FLYGT BRAND CABLES OR CONTROLS THAT WOULD ORIGINALLY HAVE BEEN SUPPLIED WITH THE TYPE OF EQUIPMENT IN USE.

REQUIREMENTS:

A copy of Electrical System Schematics of the Control used (including a Control's Bill of Material) could be required to support a Warranty Claim when a non Flygt Brand Control is used. In addition, a written record, hereby known as "the log", will be associated with each unit serial number and must be maintained by the organization having product maintenance responsibility. The log must record each preventative maintenance activity and any repair activity during the life of the warranty or verification that a Xylem Water Solutions USA, Inc. authorized Service Contract for Flygt Products is in force and must be available for review and/or auditing. Failure to meet these conditions could render this warrant null and void. Such logs could be required to determine warranty coverage.



WARRANTY

Xylem Water Solutions USA, Inc.

STORAGE:

Should a delay occur between ship date and the date of start-up, maintenance as outlined in Xylem Water Solutions USA, Inc.'s Care & Maintenance Manual for Flygt Products must be performed by the "CONTRACTOR" and/or "OWNER" during any such period of storage. Documentation providing proof and outlining what maintenance was performed must be provided to Xylem Water Solutions USA, Inc. or its Flygt Products representative within thirty (30) days of said maintenance, or the Xylem Water Solutions USA, Inc. warranty for Flygt Products could be considered void.

CONTROLS:

Warranty coverage for permanently installed controls will start for the end purchaser on the date of shipment. This warranty does not apply to controls that have been damaged due to a defective and/or improper input power supply, improper electrical protection, accidental damage, improper or unauthorized installation and/or repair, unauthorized alteration, negligence, environmental corrosion or chemical attack, improper maintenance or storage of control, any act of God, an act of war, an act of terrorism or damage resulting from the use of accessory equipment not approved by Xylem Water Solutions USA, Inc.. Further, this warranty does not apply in the event an adjustment is found to correct the alleged defect.

Solid state devices will be covered for a period of one (1) year. Electrical control panels containing controllers, PLC's, drives, soft starts, and other computerized equipment will require Transient Voltage Surge Suppression (TVSS) protection in order to satisfy the requirements of this warranty. The protection equipment associated with the control must be kept in working condition during the life of the warranty. Auxiliary equipment supplied with the control (air-conditioners etc.) is limited by the respective original equipment manufacturer's warranty offered. Consumable items such as: light bulbs, fuses, and relays are covered under normal operating conditions. Electrical surges experienced during startups and/or during normal operating use of the control panel will cause the consumable items not to be covered under this warranty policy. Components not supplied by Xylem Water Solutions USA, Inc. will not be covered by this warranty.

TOP (The Optimum Pump Station)

Xylem Water Solutions USA, Inc. will warrant the Flygt TOP pre-engineered fiberglass pump station components against defects in material and workmanship for a period of one (1) year from date of start-up or eighteen (18) months from date of shipment and is valid only to the original owner of the station. Warranty shall cover the cost of labor and materials required to correct any warrantable defect, excluding any removal and reinstallation costs, FOB Xylem Water Solutions USA, Inc.'s authorized warranty service location for Flygt's TOP.

Flygt Products contained within a TOP pre-engineered fiberglass pump station will carry the standard Xylem Water Solutions USA, Inc. warranty for Flygt products and/or accessories installed in the TOP pre-engineered fiberglass pump station.

All Flygt Product restrictions and/or limitations as outlined and described within the context of this warranty are germane to all sections of this Xylem Water Solutions USA, Inc. Warranty document.

Xylem Water Solutions USA, Inc.
National Quality Assurance - US Corporate



WARRANTY

Xylem Water Solutions USA, Inc.

ADDENDUM – WARRANTY COVERAGE BY PRODUCT

PRODUCT	PRODUCT SERIES AND CONFIGURATION	Months	Months	Months	Months	Months
		1 - 12	13 - 18	19 - 36	37 - 39	40 - 60
Axial Flow/ Mixed Flow/ Centrifugal Pumps & Mixers	3000 Series (CP, NP, DP, CT, NT, CZ, LL) 4000 Series (SR, PP) 7000 Series (PL)	100%		50%		25%
Electrical Control Panels (permanently installed)	Xylem Manufactured Control Panels - 3 - Years	100% - 1 YR	LIMITED - 2 - YR			
Abrasion/Corrosion Resistant & Chopper/ Grinder Pumps	3000 Series (MP, MF, MH, FS, FP, HP, HS) 5000 Series (HP, HS) 8000.280 Series (DP, DZ, DT, DS, DF)	100%				
Dewatering Pumps	2000 Series (BS, KS) 3000 Series (CS, NS, DS) 8000.280 Series (DS, DF)	100% (From Ship Date)				
TOPS & PSS	Fiberglass Pump Station	100% (From Ship Date)				
Accessories	Permanent / Portable	100% (From Ship Date)				
Hydro ejectors/ Aerators	HE, JA	100%				
Portable Pump Controls	Control Boxes (Nolta, MSHA etc.)	100% (From Ship Date)				
Small Pumps	3045, 3057, SX	100% (From Ship Date)				
Parts - *	All new spare parts	100% (From Ship Date)				

* - Parts that fail where used in a repair are warranted for one (1) year from the date of the repair for the failed part only – no labor.





AGENDA ITEM REVIEW FORM

Work Session

2.C.

Meeting Date: 07/05/2017

Department Head: Eulogio Vera, Public Works Director, Public Works Department

Submitted By: Manuel Rojas, Assistant Public Works Director, Public Works Department

Action Requested: Discussion Item - No Action to be Taken

ITEM:

Discussion and possible directions to staff on any and all matters regarding authorization to purchase a new Chevy Colorado, 4x2 truck for the Department of Public Works, Water Division. **(Manuel Rojas, Assistant Public Works Director)**

SUMMARY:

Staff seeks approval for purchase of a new Chevy Colorado, 4x2 truck for Water Division. Subject truck would be replacing a current vehicle, which the Division has been experiencing increase maintenance cost. Staff contacted Midway Chevrolet Nissan Isuzu Truck from Phoenix, Arizona. They are under state contract for subject purchase. We also contacted Fisher Chevrolet in Yuma, Arizona and the local vendor provided a quote of **\$25,043.17** which is \$1,276.13 less than the state contract. Under San Luis City Code-Purchasing Section 36.01(H), City Council may waive formal purchasing procedures. Here as shown by the state contract the bidding process is not likely to result in a lower price. Staff requests waiver of the formal purchasing requirements and recommends the approval of vehicle. The vehicle was approved in the budget for fiscal year 2017-2018.

RECOMMENDATION / SUGGESTED MOTION:

Discussion and possible directions to staff only, no action.

Supporting information not attached to the Agenda Item Review Form:

N/A

Document to be Recorded?: No

N/A

Fiscal Impact

IS THERE FISCAL IMPACT ASSOCIATED WITH THIS ITEM:	yes
CITY/STATE/FEDERAL FUNDS:	Enterprise Funds
TOTAL:	\$25,043.17
BUDGETED AMOUNT:	\$27,100.00
AVAILABLE AMOUNT TO TRANSFER:	\$0.00
ACCT NAME & GL#/REMAINING BALANCE BEFORE PURCHASE:	300-302-90000 Capital Outlay - Equipment \$380,727.52

FISCAL IMPACT STATEMENT (IF THIS IS A BUDGET TRANSFER, YOU MUST ATTACH THE BUDGET ADJUSTMENT FORM):

Approved purchase in Fiscal Year 2017-2018 budget. Subject vehicle to replace an existing vehicle in Water Division.

300-302-90000 Capital Outlay - Equipment, remaining balance before purchase \$380,727.52

Attachments

Midway Chevrolet Quote

Chevy Colorado Specifications

Fisher Chevrolet Quote



ARIZONA STATE CONTRACT VEHICLE QUOTE

STATE CONTRACT # ADSP014-063239 Cab and Chassis

QUOTE SENT TO:

CONTRACT VEHICLE

QUOTE DATE: [Redacted]

CONTRACT PRICE PER ATTACHED SPECS

Additional Options

Sub Total	\$	-
<u>Sales Tax (8.3 %)</u>	\$	-
<u>City of Phx.2016 Tax</u>	\$	30.00
<u>Tire Tax</u>	\$	5.00

Extended Warranty

Capital Total Each Unit	\$	35.00
--------------------------------	-----------	--------------

Quoted By: Gregg Ball
 Midway Chevrolet Nissan Isuzu Truck
 2323 W. Bell Rd.
 Phoenix, Az. 85023
gball@vtaig.com
 Cell 602-733-2251

Approximate Lead Time
 7-10 weeks

Stock quotes subject to prior sale

Quotes good through Manufactures current year build dates. Please call with any questions or concerns.

Thank You For the Opportunity!



ARIZONA STATE CONTRACT VEHICLE QUOTE

STATE CONTRACT # ADSP012-016669

QUOTE SENT TO: Manuel San Luis

CONTRACT VEHICLE 2017 Chevrolet Colorado 12M53 2WT

QUOTE DATE: 6/16/2017

CONTRACT PRICE PER ATTACHED SPECS \$ 22,678.00

Additional Options

PCN	WT Pwr Conv Pkg	\$	445.90
2018 Model Adjustment	GM fleet	\$	816.00
Solar Tint Glass	Dealer	\$	195.00
Delivery	Yuma County	\$	135.00

Sub Total \$ 24,269.90

Sales Tax (8.3 %) \$ 2,014.40

City of Phx 2016 Tax \$ 30.00

Tire Tax \$ 5.00

Extended Warranty

Capital Total Each Unit \$ 26,319.30

Quoted By: Gregg Ball Approximate Lead Time

Midway Chevrolet Nissan Isuzu Truck 8-12 weeks

2323 W. Bell Rd.

Phoenix, Az. 85023

gball@vtaig.com

Cell 602-733-2251

Stock quotes subject to prior sale

Quotes good through Manufactures current year build dates. Please call with any questions or concerns.

Thanks for the opportunity!



MIDWAY VEHICLE QUOTE

VEHICLE QUOTE

QUOTE SENT TO:

DESCRIPTION

QUOTE DATE:



PER ATTACHED SPECS

Additional Options

<u>Sub Total</u>	\$	-
<u>Sales Tax (8.3 %)</u>	\$	-
<u>City of Phx 2016 Tax</u>	\$	30.00
<u>Tire Tax</u>	\$	5.00
<u>Extended Warranty</u>		

Capital Total Each Unit	\$	35.00
--------------------------------	-----------	--------------

Quoted By: Gregg Ball
 Midway Chevrolet Nissan Isuzu Truck
 2323 W. Bell Rd.
 Phoenix, Az. 85023
gball@vtaiq.com
 Cell 602-733-2251

Approximate Lead Time

Stock quotes subject to prior sale

New Vehicle Quotes good through Manufactures current year build dates. Please call with any questions or concerns.

Thank You For the Opportunity!



MIDWAY VEHICLE QUOTE

VEHICLE QUOTE

State Contract # ADSPO13-038803 Law Enforcement

QUOTE SENT TO:

DESCRIPTION

QUOTE DATE: [Redacted] PER ATTACHED SPECS

Additional Options

<u>Sub Total</u>	\$	-
<u>Sales Tax (8.3 %)</u>	\$	-
<u>City of Phx 2016 Tax</u>	\$	30.00
<u>Tire Tax</u>	\$	5.00

Extended Warranty

Capital Total Each Unit	\$	35.00
--------------------------------	-----------	--------------

Quoted By: Gregg Ball Approximate Lead Time
 Midway Chevrolet Nissan Isuzu Truck
 2323 W. Bell Rd.
 Phoenix, Az. 85023
gball@vtaig.com
 Cell 602-733-2251 Stock quotes subject to prior sale

New Vehicle Quotes good through Manufactures current year build dates. Please call with any questions or concerns.

Thank You For the Opportunity!



MIDWAY VEHICLE QUOTE

VEHICLE QUOTE

State Contract # ADSP012-016669 Administration Vehicles

QUOTE SENT TO:

DESCRIPTION

QUOTE DATE: [Redacted] PER ATTACHED SPECS

Additional Options

<u>Sub Total</u>	\$	-
<u>Sales Tax (8.3 %)</u>	\$	-
<u>City of Phx 2013 Tax</u>	\$	30.00
<u>Tire Tax</u>	\$	5.00

Extended Warranty

Capital Total Each Unit	\$	35.00
--------------------------------	-----------	--------------

Quoted By: Gregg Ball
 Midway Chevrolet Nissan Isuzu Truck
 2323 W. Bell Rd.
 Phoenix, Az. 85023
gball@vtaig.com
 Cell 602-733-2251

Approximate Lead Time
 2-12 weeks

Stock quotes subject to prior sale

New Vehicle Quotes good through Manufactures current year build dates. Please call with any questions or concerns.

Thank You For the Opportunity!

Prepared By:

Gregg Ball

Midway Chevrolet Nissan Isuzu

2323 West Bell Road

Phoenix, AZ 85023

Phone: (602) 733-2251

Fax: (602) 760-3377

Email: gball@vtaig.com

2017 Chevrolet Colorado

12M53 2WD Ext Cab 128.3" WT

Photo may not represent exact vehicle or selected equipment.

Prepared By:

Gregg Ball
Midway Chevrolet Nissan Isuzu
2323 West Bell Road
Phoenix, AZ 85023
Phone: (602) 733-2251
Fax: (602) 760-3377
Email: gball@vtaig.com

2017 Fleet/Non-Retail Chevrolet Colorado 2WD Ext Cab 128.3" WT 12M53

SELECTED MODEL & OPTIONS

SELECTED MODEL - 2017 Fleet/Non-Retail 12M53 2WD Ext Cab 128.3" WT

<u>Code</u>	<u>Description</u>
12M53	2017 Chevrolet Colorado 2WD Ext Cab 128.3" WT

SELECTED VEHICLE COLORS - 2017 Fleet/Non-Retail 12M53 2WD Ext Cab 128.3" WT

<u>Code</u>	<u>Description</u>
-	Interior: No color has been selected.
-	Exterior 1: No color has been selected.
-	Exterior 2: No color has been selected.

SELECTED OPTIONS - 2017 Fleet/Non-Retail 12M53 2WD Ext Cab 128.3" WT

CATEGORY

<u>Code</u>	<u>Description</u>
BODY CODE	
E63	PICKUP BOX (STD) (Deleted when (ZW9) pickup box delete is ordered.)
EMISSIONS	
FE9	EMISSIONS, FEDERAL REQUIREMENTS
ENGINE	
LCV	ENGINE, 2.5L I4, DI, DOHC, VVT (200 hp [149.0 kW] @ 6300 rpm, 191 lb-ft of torque [259 N-m] @ 4400 rpm) (Not included on Crew Cab Long Box models.) (STD)
TRANSMISSION	
MYB	TRANSMISSION, 6-SPEED AUTOMATIC, HMD, 6L50 (Requires (LCV) 2.5L I4 engine or (LWN) 2.8L Duramax Turbo-Diesel engine.)
GVWR	
CHL	GVWR, 5400 LBS. (2449 KG) (Standard on Extended Cab models with (LCV) 2.5L I4 engine only.) (STD)
AXLE	

Report content is based on current data version referenced. Any performance-related calculations are offered solely as guidelines. Actual unit performance will depend on your operating conditions.

GM AutoBook, Data Version: 469.0, Data updated 12/13/16
© Copyright 1986-2012 Chrome Data Solutions, LP. All rights reserved.
Customer File:

Prepared By:
 Gregg Ball
 Midway Chevrolet Nissan Isuzu
 2323 West Bell Road
 Phoenix, AZ 85023
 Phone: (602) 733-2251
 Fax: (602) 760-3377
 Email: gball@vtaig.com

2017 Fleet/Non-Retail Chevrolet Colorado 2WD Ext Cab 128.3" WT 12M53

SELECTED MODEL & OPTIONS

SELECTED OPTIONS - 2017 Fleet/Non-Retail 12M53 2WD Ext Cab 128.3" WT

CATEGORY

Code	Description
AXLE	
GT5	REAR AXLE, 4.10 RATIO (Requires (LCV) 2.5L I4 engine. Not included on Crew Cab Long Box models.) (STD)
PREFERRED EQUIPMENT GROUP	
2WT	WORK TRUCK PREFERRED EQUIPMENT GROUP includes standard equipment
WHEEL TYPE	
RS2	WHEELS, 16" X 7" (40.6 CM X 17.8 CM) ULTRA SILVER METALLIC STEEL (STD)
TIRES	
QJJ	TIRES, P265/70R16 ALL-SEASON, BLACKWALL (STD)
SPARE TIRE	
QDC	TIRE, COMPACT SPARE T175/80R18, BLACKWALL (Requires (RTX) 18" x 4.5" (45.7 cm x 11.4 cm) Black cast aluminum, compact spare wheel.) (STD)
PAINT SCHEME	
ZY1	SOLID PAINT
PAINT	
GAZ	SUMMIT WHITE
SEAT TYPE	
AR7	SEATS, FRONT BUCKET (STD)
SEAT TRIM	
H2R	JET BLACK/DARK ASH, CLOTH SEAT TRIM
RADIO	
IO3	AUDIO SYSTEM, 4.2" DIAGONAL COLOR DISPLAY, AM/FM STEREO with USB port and auxiliary jack (STD)
ADDITIONAL EQUIPMENT	
PCN	WT CONVENIENCE PACKAGE includes (ATG) Remote Keyless Entry, (UTJ) theft-deterrent system, (K34) electronic cruise control and (PPA) EZ-Lift tailgate

Report content is based on current data version referenced. Any performance-related calculations are offered solely as guidelines. Actual unit performance will depend on your operating conditions.

GM AutoBook, Data Version: 469.0, Data updated 12/13/16
 © Copyright 1986-2012 Chrome Data Solutions, LP. All rights reserved.
 Customer File:

Prepared By:

Gregg Ball

Midway Chevrolet Nissan Isuzu

2323 West Bell Road

Phoenix, AZ 85023

Phone: (602) 733-2251

Fax: (602) 760-3377

Email: gball@vtaig.com

2017 Fleet/Non-Retail Chevrolet Colorado 2WD Ext Cab 128.3" WT 12M53

SELECTED MODEL & OPTIONS

SELECTED OPTIONS - 2017 Fleet/Non-Retail 12M53 2WD Ext Cab 128.3" WT

CATEGORY

Code Description

ADDITIONAL EQUIPMENT

- PPA TAILGATE, EZ-LIFT AND LOWER (Included and only available with (PCN) WT Convenience Package.)
- K34 CRUISE CONTROL, ELECTRONIC, AUTOMATIC (Included and only available with (PCN) WT Convenience Package.)
- ATG REMOTE KEYLESS ENTRY, EXTENDED RANGE (Included and only available with (PCN) WT Convenience Package.)
- UTJ THEFT-DETERRENT SYSTEM, UNAUTHORIZED ENTRY (Included and only available with (PCN) WT Convenience Package.)
- R9Y FLEET FREE MAINTENANCE CREDIT. This option code provides a credit in lieu of the free oil changes, tire rotations and inspections (2 maximum), during the first 24 months and 24,000 miles period for this ordered vehicle. The invoice will detail the applicable credit. The customer will be responsible for all oil change, tire rotations and inspections costs for this vehicle. (Requires one of the following Fleet or Government order types: FBC, FBN, FCA, FCN, FLS, FNR, FRC or FGO. Not available with FDR order types.) *CREDIT*
- VQ3 FLEET PROCESSING OPTION

OPTIONS TOTAL

Report content is based on current data version referenced. Any performance-related calculations are offered solely as guidelines. Actual unit performance will depend on your operating conditions.

GM AutoBook, Data Version: 469.0, Data updated 12/13/16
© Copyright 1986-2012 Chrome Data Solutions, LP. All rights reserved.
Customer File:

Prepared By:

Gregg Ball

Midway Chevrolet Nissan Isuzu

2323 West Bell Road

Phoenix, AZ 85023

Phone: (602) 733-2251

Fax: (602) 760-3377

Email: gball@vtaig.com

2017 Fleet/Non-Retail Chevrolet Colorado 2WD Ext Cab 128.3" WT 12M53

STANDARD EQUIPMENT

STANDARD EQUIPMENT - 2017 Fleet/Non-Retail 12M53 2WD Ext Cab 128.3" WT

ENTERTAINMENT

- Audio system, 4.2" diagonal color display, AM/FM stereo with USB port and auxiliary jack
- Audio system feature, 6-speaker system
- Audio system feature, USB port, located on instrument panel

EXTERIOR

- Wheels, 16" x 7" (40.6 cm x 17.8 cm) Ultra Silver Metallic steel
- Tires, P265/70R16 all-season, blackwall
- Pickup box (Deleted when (ZW9) pickup box delete is ordered.)
- Tire, compact spare T175/80R18, blackwall (Requires (RTX) 18" x 4.5" (45.7 cm x 11.4 cm) Black cast aluminum, compact spare wheel.)
- Wheel, compact spare, 18" x 4.5" (45.7 cm x 11.4 cm) Black cast aluminum (Standard with (LCV) 2.5L I4 engine only. Not included on Crew Cab Long Box models.)
- Bumper, rear chrome (Deleted when (ZW9) pickup box delete is ordered.)
- CornerStep, rear bumper (Deleted when (ZW9) pickup box delete is ordered.)
- Moldings, Black beltline
- Headlamps, halogen with automatic exterior lamp control
- Cargo box light, back of cab
- Mirrors, outside remote with manual-folding, Black
- Glass, windshield shade band
- Door handles, Black
- Tailgate, locking (Deleted when (ZW9) pickup box delete is ordered.)
- Tailgate handle, Black (Deleted when (ZW9) pickup box delete is ordered.)

Report content is based on current data version referenced. Any performance-related calculations are offered solely as guidelines. Actual unit performance will depend on your operating conditions.

GM AutoBook, Data Version: 469.0, Data updated 12/13/16
© Copyright 1986-2012 Chrome Data Solutions, LP. All rights reserved.
Customer File:

Prepared By:

Gregg Ball

Midway Chevrolet Nissan Isuzu

2323 West Bell Road

Phoenix, AZ 85023

Phone: (602) 733-2251

Fax: (602) 760-3377

Email: gball@vtaig.com

2017 Fleet/Non-Retail Chevrolet Colorado 2WD Ext Cab 128.3" WT 12M53

STANDARD EQUIPMENT

STANDARD EQUIPMENT - 2017 Fleet/Non-Retail 12M53 2WD Ext Cab 128.3" WT

INTERIOR

- Seats, front bucket
- Seat adjuster, driver 4-way power with manual recline
- Seat adjuster, passenger 2-way manual fore/aft with manual recline
- Seats, dual rear with underseat storage (Extended Cab models only.)
- Console, floor, front compartment, custom
- Floor covering, color-keyed carpeting
- Floor mats, carpeted front (Deleted when (B38) full-length Black vinyl floor covering is ordered. Requires (B30) color-keyed carpeting floor covering.)
- Floor mats, carpeted rear (Requires (B30) color-keyed carpeting floor covering.)
- Steering wheel, urethane
- Steering column, tilt, manual
- Speedometer, miles/kilometers
- Display, driver instrument information enhanced, one color
- Windows, power with driver Express-Up and Down
- Door locks, power
- Theft-deterrent system, immobilization
- Air conditioning, single-zone manual climate control
- Handles, door release, front and rear, Jet Black
- Mirror, inside rearview manual day/night
- Visors, driver and front passenger with passenger vanity mirror
- Lighting, interior, center dome

Report content is based on current data version referenced. Any performance-related calculations are offered solely as guidelines. Actual unit performance will depend on your operating conditions.

GM AutoBook, Data Version: 469.0, Data updated 12/13/16
© Copyright 1986-2012 Chrome Data Solutions, LP. All rights reserved.
Customer File:

Prepared By:

Gregg Ball

Midway Chevrolet Nissan Isuzu

2323 West Bell Road

Phoenix, AZ 85023

Phone: (602) 733-2251

Fax: (602) 760-3377

Email: gball@vtaig.com

2017 Fleet/Non-Retail Chevrolet Colorado 2WD Ext Cab 128.3" WT 12M53

STANDARD EQUIPMENT

STANDARD EQUIPMENT - 2017 Fleet/Non-Retail 12M53 2WD Ext Cab 128.3" WT

MECHANICAL

- Engine, 2.5L I4, DI, DOHC, VVT (200 hp [149.0 kW] @ 6300 rpm, 191 lb-ft of torque [259 N-m] @ 4400 rpm) (Not included on Crew Cab Long Box models.)
- Transmission, 6-speed manual (Extended Cab model only. Requires (LCV) 2.5L I4 engine.)
- Rear axle, 4.10 ratio (Requires (LCV) 2.5L I4 engine. Not included on Crew Cab Long Box models.)
- GVWR, 5400 lbs. (2449 kg) (Standard on Extended Cab models with (LCV) 2.5L I4 engine only.)
- Rear wheel drive
- Brakes, 4-wheel antilock, 4-wheel disc

SAFETY

- StabiliTrak, stability control system
- Traction control, electronic
- Daytime Running Lamps
- Air bags, dual-stage frontal and side-impact, driver and front passenger and head-curtain and seat-mounted side-impact, front and rear outboard seating positions with Passenger Sensing System (Always use safety belts and child restraints. Children are safer when properly secured in a rear seat in the appropriate child restraint. See the Owner's Manual for more information.)
- Rear Vision Camera (Deleted when (ZW9) pickup box delete is ordered.)
- Teen Driver mode a configurable feature that lets you activate customizable vehicle settings associated with a key fob, to encourage safe driving behavior. It can limit certain vehicle features, and it prevents certain safety systems from being turned off. An in-vehicle report gives you information on your teen's driving habits and helps you to continue to coach your new driver
- Tire Pressure Monitor System

Report content is based on current data version referenced. Any performance-related calculations are offered solely as guidelines. Actual unit performance will depend on your operating conditions.

GM AutoBook, Data Version: 469.0, Data updated 12/13/16
© Copyright 1986-2012 Chrome Data Solutions, LP. All rights reserved.
Customer File:



From: Fisher Chevrolet

To: City Of San Luis

Subject: BID FOR 2018 CHEVROLET COLORADO

Your price for the Colorado will be \$23,100 after rebate.

The Sales Tax is \$1,943.17

The out the door price with tax and no other fees is \$25,043.17

You will also receive free oil changes for as long as you own the vehicle,
they must be performed at Fisher Chevrolet.

Thomas Williams

Fleet & Commercial Sales Manager

Fisher Chevrolet
775 East 32nd Street
Yuma, AZ 85365
(928) 726-5500

Fisher Dodge Chrysler Jeep
349 East 32nd Street
Yuma, AZ 85364
(928) 344-2650

Fisher Collision Center
3365 Chevy Lane
Yuma, AZ 85365
(928) 726-5500

Fisher HYUNDAI
1125 East. 32nd Street
Yuma, AZ 85365
(928) 726-6970



www.itsafisher.com



AGENDA ITEM REVIEW FORM

Work Session

2.D.

Meeting Date: 07/05/2017

Department Head: Eulogio Vera, Public Works Director, Public Works Department

Submitted By: Manuel Rojas, Assistant Public Works Director, Public Works Department

Action Requested: Discussion Item - No Action to be Taken

ITEM:

Discussion and possible directions to staff on any and all matters regarding the purchase of a new Vehicle Gateway Base Station System (VGB) for Public Works Department, Water Division. **(Manuel Rojas, Assistant Public Works Director)**

SUMMARY:

Staff recommends the purchase of the VGB meter reading equipment since it will upgrade our current system and will allow us to electronically read the new radio/antennas (MXU 520M). The Sensus will be discontinuing the current radio/antennas that we are currently using (MXU 520R), and we will transition to the new radio/antennas by December 2017. Subject purchase, a sole source purchase from Dana Kepner Company, an authorized provider of Sensus metering systems in Arizona. Under San Luis City Code-Purchasing Section 36.02 where there is only one provider then the purchase may be secured without obtaining other quotes. The proposal is for **\$17,929.82**.

RECOMMENDATION / SUGGESTED MOTION:

Discussion and possible directions to staff only, no action.

Supporting information not attached to the Agenda Item Review Form:

N/A

Document to be Recorded?: No

N/A

Fiscal Impact

IS THERE FISCAL IMPACT ASSOCIATED WITH THIS ITEM:	Yes
CITY/STATE/FEDERAL FUNDS:	Enterprise Fund
TOTAL:	\$17,929.82
BUDGETED AMOUNT:	\$17,000.00
AVAILABLE AMOUNT TO TRANSFER:	N/A
ACCT NAME & GL#/REMAINING BALANCE BEFORE PURCHASE:	300-302-90000 Capital Outlay - Equipment \$354,408.22
FISCAL IMPACT STATEMENT (IF THIS IS A BUDGET TRANSFER, YOU MUST ATTACH THE BUDGET ADJUSTMENT FORM):	

The VGB System is an approved Fiscal Year 2017-2018 Water Division purchase. The additional \$929.82 will be available from the savings after the CAT 918M loader purchase.

300-302-90000 Capital Outlay - Equipment, Remaining Balance Before Purchase \$354,408.22

Attachments

VGB Proposal

Document: Order Acknowledgement - Quote Order

UPC Vendor Invoice Date Order #
000000 8149318-00
PO Date PO # Page #
06/20/17 1

Cust #: 79120000

Bill To: CITY OF SAN LUIS
ATTN: A/P MAGGIE DOMINGUEZ
P.O. BOX 7740
SAN LUIS, AZ 85349

Correspondence To: Dana Kepner Company, Inc.
700 Alcott Street
Denver, CO 80204

Ship To: CITY OF SAN LUIS
ATTN: A/P MAGGIE DOMINGUEZ
P.O. BOX 7740
SAN LUIS, AZ 85349

Instructions

Ship Point Via Shipped Terms
Dana Kepner Company, Inc. Net 30 Days

Product	UPC	Quantity	Quantity	Quantity	Qty.	Unit	Price	Discount	Amount
Ln# And Description	Item#	Ordered	B.O.	Shipped	UM	Price	UM	Multiplier	(Net)
1 74VGBM600NS		0 1			each	16979.00	each	0.00	16979.00
SENSUS VEHICLE GATEWAY BASESTATION ,LESS LAPTOP									
1 Lines Total							Total		16979.00
							Taxes		950.82
							Invoice Total		17929.82



AGENDA ITEM REVIEW FORM

Work Session

2.E.

Meeting Date: 07/05/2017

Department Head: Jose A. Guzman, Acting Planning & Zoning Director, Planning & Zoning Department

Submitted By: Jose A. Guzman, Acting Planning & Zoning Director, Planning & Zoning Department

Action Requested: Discussion Item - No Action to be
Taken
Board of Adjustment

ITEM:

Discussion and possible directions to staff on any and all matters regarding Variance Case No. 2017-0430. A request by Linda Speakman on behalf of Jofco Inc., owner, for a Variance to install a six (6) foot fence on the property line instead of the 3 feet 6 inches required. The property is located at 517 N. 1st Avenue, San Luis, Arizona. **(Jose A. Guzman, Acting Planning and Zoning Director)**

SUMMARY:

The property is located in a Community Commercial (C-2) Zoning District; Assessor's Parcel No. 775-46-035 located at 517 N. 1st Avenue, San Luis, Arizona.

The reason for the request is to install a six (6) foot tall chain link fence around the perimeter of the C&F Parking Lot. As per section 152.219(A) of the City of San Luis Code of Ordinances, "In all districts a fence or wall or hedge may be erected or maintained at a height no greater than three feet, six inches (3'6") within the required front and street side setback. In this case the setbacks required are front- 15 feet and street sides - 10 feet.

CRITERIA FOR APPROVAL:

All requests for a variance from the City of San Luis Zoning Ordinance must meet the criteria for a variance as set forth in the City of San Luis Zoning Ordinance. A variance is not a right. It may be granted to an applicant only if the applicant establishes compliance with all of the hardship criteria established in A.R.S. §9-462.06 and in Sec 3.5 (C.) of this ordinance. In all cases, the application shall address all of the following hardship criteria:

1. There exist special circumstances or conditions regarding the land or building referred to in the application, which do not apply to other properties in the zoning district.
2. The above special circumstances or conditions are pre-existing and are not created or self-imposed by the owner or applicant.
3. The variance is necessary for the preservation of substantial property rights. Without a variance the property cannot be used for purposes otherwise allowed in this zoning district.
4. The authorizing of the variance will not be materially detrimental to persons residing or working in the vicinity, to adjacent property, or to the neighborhood or the public welfare.

The Arizona Revised Statutes (§9-462.069-462.06 - Board of Adjustment) further states that the Board may not:

1. Make any changes in the uses permitted in any zoning classification or zoning district.
2. Grant a variance if the special circumstances applicable to the property are self-imposed by the property owner.

RECOMMENDATION / SUGGESTED MOTION:

Discussion and possible directions to staff only, no action.

Supporting information not attached to the Agenda Item Review Form:

N/A

Document to be Recorded?: No

N/A

Fiscal Impact

IS THERE FISCAL IMPACT ASSOCIATED WITH THIS ITEM: N/A

CITY/STATE/FEDERAL FUNDS: N/A

TOTAL: N/A

BUDGETED AMOUNT: N/A

AVAILABLE AMOUNT TO TRANSFER: N/A

ACCT NAME & GL#/REMAINING BALANCE BEFORE PURCHASE: N/A

FISCAL IMPACT STATEMENT (IF THIS IS A BUDGET TRANSFER, YOU MUST ATTACH THE BUDGET ADJUSTMENT FORM):

N/A

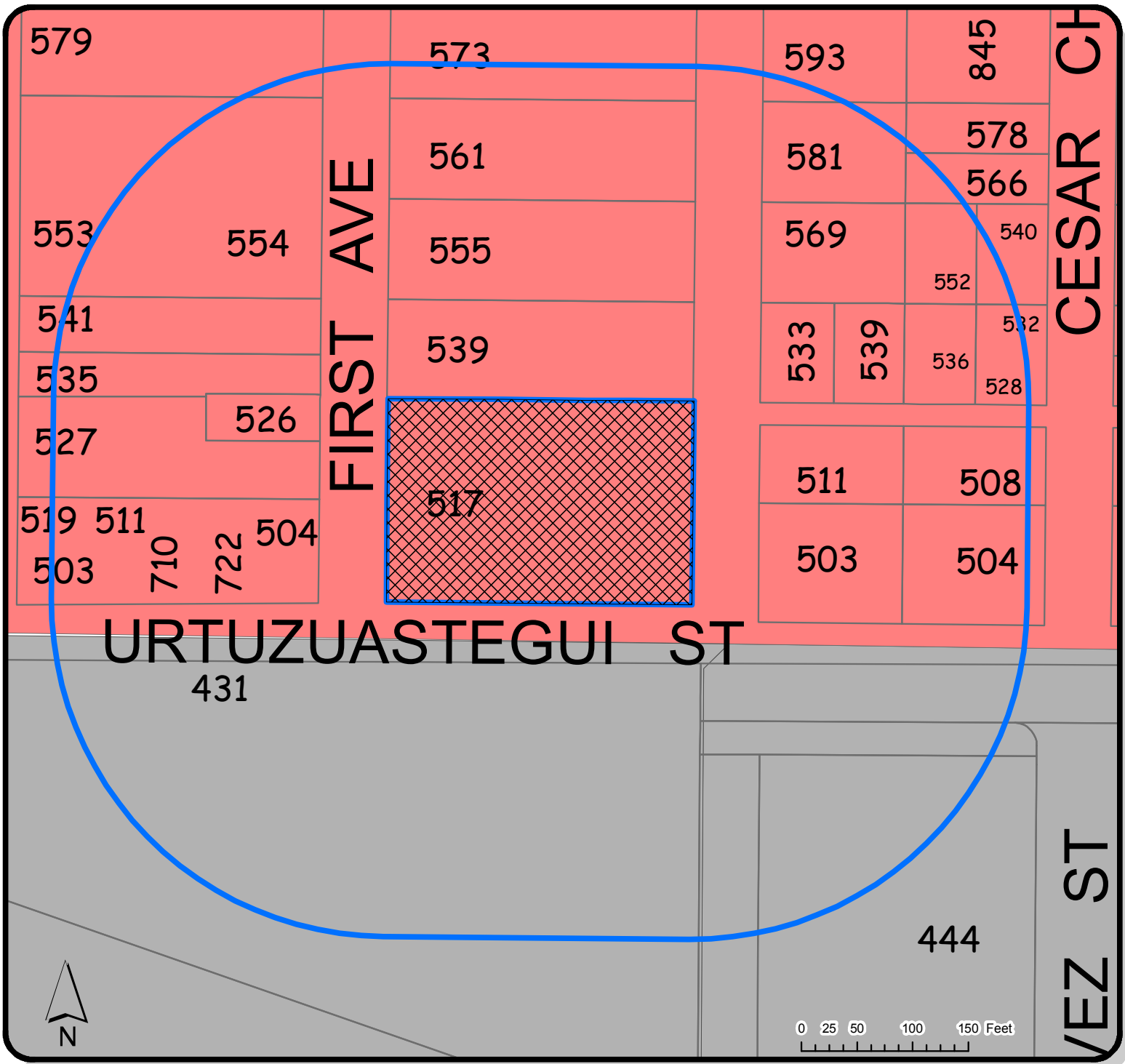
Attachments

Location Map

Pictures of Location

Letter of Request


Fire Department Comments (6-26-17)



LOCATION OF SUBJECT PROPERTY



Location Map

VARIANCE

 517 N FIRST AVE
 Legal: Subdivision: SAN LUIS TOWNSITE
 Block: 5 Lot: 5 6 Section: 12 Township: 11S
 Range: 25W

 300ft Notification Area

Zoning

 LI
 C-2

Date: 6/22/2017



Prepared By:
IG

Case No.
2017-0430

Checked By:
ROMAN PACHECO

APPROVED BY:
JOSE A. GUZMAN



BEGIN
NORTH
95

BIKE LANE

C&F PARKING
24 HOURS \$5.00
WE ARE NOT RESPONSIBLE FOR DAMAGES OR THEFTS PROPERTY
WE DO NOT ACCEPT LIABILITY FOR DAMAGE TO VEHICLES

ONE WAY

UTILITY WORK
AHEAD



SECOND AVE

C&F PARKING
24 HOURS \$5.00
NO VEHICLES TO BE LEFT UNATTENDED
NO VEHICLES TO BE LEFT UNLOCKED

C&F
PUBLIC PARKING
OPEN 24 HOURS

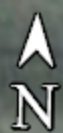
TAXI

517 N. FIRST AVE
Variance Case No. 2017-0430

Legend



Urtuzuastegui St



CHARLES URTUZUASTEGUI
LAWYER

RECEIVED BY
R.P. 6-12-17
DEVELOPMENT SERVICES
CITY OF SAN LUIS

255 EAST SANTA CLARA STREET
SUITE 300
ARCADIA, CA 91006
☎ (626) 445-1212 ☎ (626) 294-2899
✉ CUPASADENA@AOL.COM

June 6, 2017

City of San Luis
Planning and Zoning Department
Building Safety Division
1090 Union Street
P. O. Box 3750
San Luis, AZ 85349

Re: Application for Variance for Fence
Project Address: 538 North 2nd Avenue, San Luis, AZ 85349
Project Name: C & F Parking Lot Fence

Dear Sir or Madam:

This letter constitutes an application for a variance for the purpose of installing a six (6) foot tall chain link fence around the perimeter of the C & F Parking Lot. My understanding is that applicable city ordinances approve a three (3) foot fence for the premises where the parking lot is located and that one must apply for a variance from the city requesting permission to install a taller fence.

- a) There exist special circumstances or conditions regarding the land or building referred to in the application, which do not apply to other properties in the zoning district.

Jofco owns and operates a parking lot at the address above mentioned. It is staffed 24 hours a day, seven days a week, 365 days a year – around the clock. Earlier this year after darkness had set in; there were two instances where cars were driven off the lot without exiting through the exit booth. In both instances, the vehicles were reported stolen and security cameras captured the vehicles being driven off the parking lot, over the sidewalk and the curb and onto 1st Avenue. One of the vehicles was found abandoned in Somerton the next day. Fencing is necessary for the security of the vehicles in the parking lot in order to prevent the unauthorized removal of vehicles from the parking lot.

- b) The above special circumstances or conditions are preexisting and are not created or self-imposed by the owner.

Page Two – Request for Variance

Neither Jofco nor its employees played any part in the theft of the vehicles. The drivers of the vehicles entered the parking lot, paid the fee and properly parked within the parking lot. During the night, on two different dates, a vehicle was driven off the parking lot without leaving through the exit lane, but instead crossed the sidewalk and driven directly onto the streets along the perimeter of the parking lot. This could not have happened if the parking lot had been fenced.

- c) The variance is necessary for the preservation of substantial property rights. Without a variance the property cannot be used for purposes otherwise used in this zoning district.

The zoning ordinance allows a three (3) foot fence in this district. Jofco is asking for a variance allowing a six (6) foot chain link (cyclone) fence for the protection of the hundreds of pedestrians that traverse the parking lot every day. A three (3) foot chain fence chain link fence is not safe for the parking lot because some pedestrians will look at the short fence as a challenge to try to jump over thereby risking possible injury to themselves. Every school day, there are hundreds of students crossing the parking lot going to and from school. They run and rough house with their fellow students in the parking lot and a three foot fence will provide a challenge to them to show off their athletic ability by attempting to hurdle over the fence. Someone will eventually get hurt, and this puts the parking lot at risk of a lawsuit. In addition, this lot is open 24 hours a day every day and there are customers entering and leaving the parking lot at all hours of the day or night. Whether out of laziness or bravado, since some customers return to the parking lot in an inebriated state, a three foot fence is just low enough for some intoxicated person to throw caution to the wind and to try to jump or hurdle the fence. This prospect could lead to injury and a claim against the parking lot for personal injury.

These events are reasonably foreseeable and lead to the conclusion that a three foot chain link fence is not tall enough to discourage or prevent this type of conduct by school children and adults. A six foot chain link fence offers more security and safety for school children, adults and the public in general who venture onto the parking lot. A variance approving a six foot chain link fence would also protect the City of San Luis from claims based upon the dangerous condition created by the installation of shorter fence.

- d) The authorizing of the variance would not be materially detrimental to persons residing or working in the vicinity, to adjacent property, or to the neighborhood or the public welfare.

Our only neighbor in our same block, the Barkley Company, presently has a six foot chain link fence surrounding the perimeter of its property which covers approximately two-thirds (2/3) of the block. Aesthetically, a six foot chain link


Page Three – Request for Variance

fence would complement the pre-existing Barkley fencing better because the appearance and the height of the chain link fencing are the same. I have enclosed some color photographs showing the view of the 1st Street side of the Barkley property and the C & F Parking lot. For that reason, the requested variance would not be materially detrimental to the public or to persons working or residing in the vicinity or to the public welfare.

Jofco requests that the City approve the variance requested as the more reasonable alternative to a three (3) foot fence, mainly for reasons of public safety given the hundreds of pedestrians that pass through the Jofco parking lot every day.

Very truly yours,

LAW OFFICES OF CHARLES URTUZUASTEGUI



Charles Urtuzuastegui

CU: bm

I, Linda Speakman, approve of the content of this Request for Variance for fence and I join in requesting approval for this application for variance for fence.



Linda speakman

Barkley Yard occupies rest of Block



Barkley Cuchone 6' Fence



First Street / Urbuzastegui looking North





June 22, 2017

VARIANCE CASE NUMBER: 2017-0430 / C & F Parking Lot Fence

CASE SUMMARY: A request by Linda Speakman on behalf of Jofco Inc., owner, for a Variance to install a six (6) foot chain link (cyclone) fence around the perimeter of the C & F Parking Lot taller than the required front or street side setback as per section 152.219 – (A) of the City of San Luis Code of Ordinances. The property is in a Community Commercial (C-2) Zoning District; Assessor's Parcel No. 775-46-035 located at 517 N. 1st Avenue, San Luis, Arizona.

PUBLIC HEARING: July 12, 2017

COMMENTS DUE: June 29, 2017

Your comments on this case will help us prepare an accurate and timely staff report. Your comments on this case will be inserted as is into the staff report with your name, department, and telephone number, should the applicant have any questions. Your comments are a public record and will be available to the public, media, and the applicant, in addition to the Board of Adjustment hearing this case. Please complete the section below and return via e-mail. For additional information please contact me at 928-341-8563, extension 2014, or at jaguzman@cityofsanluis.org.

Thank you,

Jose A. Guzman
Acting Planning & Zoning Director

Attachment: Location Map

COMMENTS NO COMMENTS

Enter Comments below:

The City of San Luis Fire Department has no comments at this time, but reserves the right to comment upon subsequent submittals. Final decisions regarding this request are best made by the Planning and Zoning Department.

Date:

06/26/17

Agency:

The City of San Luis Fire Department

Phone:

928/341-8550

Return to: Rpacheco@cityofsanluis.org



AGENDA ITEM REVIEW FORM

Work Session

3.A.

Meeting Date: 07/05/2017

Department Head: Sonia Cornelio, City Clerk, City Clerk's Office

Submitted By: Sonia Cornelio, City Clerk, City Clerk's Office

Action Requested: Discussion Item - No Action to be Taken

ITEM:

Discussion and possible directions to staff on any and all matter regarding the position of Vice-Mayor.
(Ruben Walshe, Council Member)

SUMMARY:

This item was requested by Council Member Ruben Walshe to be discussed at the Work Session for July 5, 2017.

RECOMMENDATION / SUGGESTED MOTION:

Discussion and possible directions to staff only, no action.

Supporting information not attached to the Agenda Item Review Form:

N/A

Document to be Recorded?: No

N/A

Fiscal Impact

IS THERE FISCAL IMPACT ASSOCIATED WITH THIS ITEM: N/A

CITY/STATE/FEDERAL FUNDS: N/A

TOTAL: N/A

BUDGETED AMOUNT: N/A

AVAILABLE AMOUNT TO TRANSFER: N/A

ACCT NAME & GL#/REMAINING BALANCE BEFORE PURCHASE: N/A

FISCAL IMPACT STATEMENT (IF THIS IS A BUDGET TRANSFER, YOU MUST ATTACH THE BUDGET ADJUSTMENT FORM):

There is no fiscal impact associated with this item.

Attachments

Vice Mayor-City Code

Vice Mayors List

San Luis - Administration

- 30.060 Committees and commissions
- 30.061 Voting
- 30.062 Suspension of rules

Ordinances, Resolutions and Contracts

- 30.075 Prior approval
- 30.076 Same day passage prohibited
- 30.077 Two separate readings
- 30.078 Effective date of ordinances
- 30.079 Signatures required
- 30.080 Publishing required
- 30.081 Posting required

MAYOR**§ 30.001 ELECTION OF MAYOR.**

The qualified electors of the city shall directly elect the Mayor.
(Prior Code, § 2-2-1) (Ord. 70, passed 1-25-1989)

§ 30.002 VICE-MAYOR.

At the first meeting at which the Mayor takes the oath of office, the Council shall designate one of its members as Vice-Mayor, who shall serve at the pleasure of the Council. The Vice-Mayor shall perform the duties of the Mayor during his or her absence or disability.
(Prior Code, § 2-2-2)

§ 30.003 ACTING MAYOR.

In the absence or disability of both the Mayor and Vice-Mayor, the Council may designate another of its members to serve as acting Mayor, who shall have all the powers, duties and responsibilities of the Mayor during the absence or disability.
(Prior Code, § 2-2-3)

**CITY OF SAN LUIS
VICE-MAYOR POSITION
1979-PRESENT**

NAME	OFFICE	TERM
William Hochstatter	Vice-Mayor	5/22/1980 - 5/26/1982
Marco Antonio Reyes	Vice-Mayor	5/26/1982 - 5/23/1984
Elias Bermudez	Vice-Mayor	5/23/1984 - 5/28/1986
Luis Castro	Vice-Mayor	5/28/1986 - 1/10/1990
Irma Rios	Vice-Mayor	5/23/1990 - 6/10/1992
Miguel A. Lopez	Vice-Mayor	6/10/1992 - 5/18/1994
Josefina Rodriguez	Vice-Mayor	5/18/1994 - 12/03/1997
Alex Joe Harper	Vice-Mayor	12/03/1997 - 12/30/1997
Ernesto Montes	Vice-Mayor	12/30/1997 - 2/11/1998
Marco Antonio Reyes	Vice-Mayor	2/11/1998 - 5/27/1998
Jose Leonardo Suarez	Vice-Mayor	6/24/1998 - 6/05/2000
Guillermina Fuentes	Vice-Mayor	6/05/2000 - 11/19/2001
Gloria Torres	Vice-Mayor	12/12/2001 - 3/27/2002
Pedro Julian	Vice-Mayor	5/08/2002 - 6/12/2002
Yolanda Chong	Vice-Mayor	6/26/2002 - 4/01/2003
Jose Ponce	Vice-Mayor	4/09/2003 - 6/02/2004
Dolores "Lolita" Concha	Vice-Mayor	6/02/2004 - 8/10/2005
Nieves Garcia Riedel	Vice-Mayor	8/10/2005 - 11/23/2005
Guillermina Fuentes	Vice-Mayor	11/23/2005 - 5/26/2006
Archibaldo Gurrola	Vice-Mayor	6/14/2006 - 7/11/2007
Rafael Torres	Vice-Mayor	7/11/2007 - 6/11/2008
Marco A. "Tony" Reyes Jr.	Vice-Mayor	6/11/2008 - 6/09/2010
Marco A. Pinzon	Vice-Mayor	5/09/2012 - 6/12/13
Matias Rosales	Vice-Mayor	6/12/13-PRESENT



AGENDA ITEM REVIEW FORM

Work Session

3.B.

Meeting Date: 07/05/2017

Department Head: Sonia Cornelio, City Clerk, City Clerk's Office

Submitted By: Melissa Lopez, Deputy City Clerk, City Clerk's Office

Action Requested: Discussion Item - No Action to be Taken

ITEM:

Discussion and possible directions to staff on any and all matters regarding update on current Capital Improvement Projects. **(Ruben Walshe, Council Member and Eulogio Vera, Public Works Director)**

SUMMARY:

This item was requested by Council Member Ruben Walshe to be discussed at the Work Session for July 5, 2017.

RECOMMENDATION / SUGGESTED MOTION:

Discussion and possible directions to staff only, no action.

Supporting information not attached to the Agenda Item Review Form:

N/A

Document to be Recorded?: No

N/A

Fiscal Impact

IS THERE FISCAL IMPACT ASSOCIATED WITH THIS ITEM: N/A

CITY/STATE/FEDERAL FUNDS: N/A

TOTAL: N/A

BUDGETED AMOUNT: N/A

AVAILABLE AMOUNT TO TRANSFER: N/A

ACCT NAME & GL#/REMAINING BALANCE BEFORE PURCHASE: N/A

FISCAL IMPACT STATEMENT (IF THIS IS A BUDGET TRANSFER, YOU MUST ATTACH THE BUDGET ADJUSTMENT FORM):

There is no fiscal impact associated with this item.



AGENDA ITEM REVIEW FORM

Work Session

3.C.

Meeting Date: 07/05/2017

Department Head: Sonia Cornelio, City Clerk, City Clerk's Office

Submitted By: Sonia Cornelio, City Clerk, City Clerk's Office

Action Requested: Discussion Item - No Action to be Taken

ITEM:

Discussion and possible directions to staff on any and all matters regarding an update on hot water issues. **(Ruben Walshe, Council Member and Eulogio Vera, Public Works Director)**

SUMMARY:

This item was requested by Council Member Ruben Walshe to be discussed at the Work Session for July 5, 2017.

RECOMMENDATION / SUGGESTED MOTION:

Discussion and possible directions to staff only, no action.

Supporting information not attached to the Agenda Item Review Form:

N/A

Document to be Recorded?: No

N/A

Fiscal Impact

IS THERE FISCAL IMPACT ASSOCIATED WITH THIS ITEM: N/A

CITY/STATE/FEDERAL FUNDS: N/A

TOTAL: N/A

BUDGETED AMOUNT: N/A

AVAILABLE AMOUNT TO TRANSFER: N/A

ACCT NAME & GL#/REMAINING BALANCE BEFORE PURCHASE: N/A

FISCAL IMPACT STATEMENT (IF THIS IS A BUDGET TRANSFER, YOU MUST ATTACH THE BUDGET ADJUSTMENT FORM):

There is no fiscal impact associated with this item.
