



NOTICE OF WORK SESSION

In accordance with §38-431.01 of the Arizona Revised Statutes of the State of Arizona, notice is hereby given to the Members of City Council and to the general public that the Mayor and Council of the City of San Luis, Arizona, will hold a Work Session meeting at 6:30 p.m., Wednesday, August 2, 2017. The Work Session will take place at the City Council Chambers, located at 1090 E. Union Street, San Luis, Arizona, 85349. Everyone from the public is invited to attend the open meeting.

In accordance with the Americans with Disabilities Act (ADA) and Section 504 of the Rehabilitation Act of 1973, the City of San Luis does not discriminate on the basis of disability in the admission of or access to, or treatment of employment in its programs, activities, or services. For information regarding rights and provisions of the ADA or Section 504, or to request reasonable accommodations for participation in City programs, activities or services contact: ADA/Section 504 Coordinator, City of San Luis Human Resources Department, 1090 E. Union Street, San Luis, Arizona, 85349; (928) 341-8520.

Notice is hereby given that pursuant to A.R.S. §1-602.A.9, subject to certain specified statutory exceptions, parents have a right to consent before the State or any of its political subdivisions make a video or audio recording of a minor child. Meetings of the City Council are audio and/or video recorded, and, as a result, proceedings in which children are present may be subject to such recordings. Parents in order to exercise their rights may either file written consent with the City Clerk to such recordings, or take personal action to ensure that their child or children are not present when a recording may be made. If a child is present at the time a recording is made, the City will assume that the rights afforded parents pursuant to A.R.S. §1-602.A.9 have been waived.

THIS NOTICE IS GIVEN BY:

/s/ Sonia Cornelio, City Clerk

AVISO DE SESION DE TRABAJO

De acuerdo con los Estatutos del Estado de Arizona A.R.S. §38-431.01, se le informa a los miembros del Cabildo y al público en general que el Alcalde y el Cabildo, tendrán una Sesión de Trabajo a las 6:30 p.m., el día Miércoles 2 de Agosto del 2017. La junta se llevará a cabo en la Sala del Cabildo, ubicada en el 1090 E. Union Street, San Luis, Arizona, 85349. El público está cordialmente invitado a la junta.

De acuerdo con el Acta de Americanos con Discapacidades y la Sección 504 del Acta de Rehabilitación del 1973, la Ciudad de San Luis, Arizona no discrimina por causa de discapacidad la admisión y acceso a sus programas, actividades, servicios o en el trato en cuanto a empleo. Para más información referente a derechos y provisiones del Acta de Americanos con Discapacidades o Sección 504, o para solicitar adaptaciones que sean razonables para la participación en programas, actividades o servicios de la Ciudad, contactar al: Coordinador del Acta de Americanos con Discapacidades/Sección 504, Departamento de Recursos Humanos de la Ciudad de San Luis, Arizona, ubicado en el 1090 E. Union Street, San Luis, Arizona, 85349; (928) 341-8520.

Por medio de este aviso y de acuerdo con los Estatutos del Estado de Arizona A.R.S §1-602.A.9, sujeto a ciertas excepciones reglamentarias, los padres de familia tienen el derecho de dar el consentimiento ante el Estado o cualquiera de sus subdivisiones políticas para hacer una grabación de audio o video de su hijo menor de edad. Las juntas del Cabildo se graban en audio y/o video y como resultado, el hecho de que haya menores presentes puede ser sujeto a que sean grabados. Para que los padres de familia puedan ejercer sus derechos pueden dar el consentimiento por escrito con la Secretaria de la Ciudad a tal grabación, o tomar acción personal para asegurarse que su hijo menor no esté presente cuando la grabación se lleve a cabo. Si un menor de edad está presente en el momento de la grabación, la Ciudad asumirá que los padres de familia están cediendo los derechos sobre una posible grabación de acuerdo con los Estatutos del Estado de Arizona A.R.S. §1-602.A.9.

ESTE AVISO ES DADO POR:

/f/ Sonia Cornelio, Actuaría de la Ciudad



AMENDED AGENDA

7/28/2017

AGENDA
Work Session
San Luis City Council
San Luis Council Chambers
1090 E. Union Street
San Luis, AZ 85349
August 2, 2017
6:30 p.m.

PLEASE TAKE NOTICE THAT MEMBERS OF THE CITY COUNCIL WILL ATTEND EITHER IN PERSON, TELEPHONE, OR VIDEO CONFERENCE COMMUNICATION; THE MAYOR OR ACTING MAYOR FOR THIS MEETING MAY CHANGE THE ORDER OF THE ITEMS.

1. **CALL TO ORDER/ROLL CALL**
2. **AGENDA ITEMS:**
 2. A. Discussion and possible directions to staff on any and all matters regarding marketing efforts to increase public awareness of the City's activities, services, and promotion of economic development. **(Jenny Torres, Community Development Director)**
 2. B. Discussion and possible directions to staff on any and all matters regarding contract with GIS Planning to provide ZoomProspector Enterprise Web Services. **(Jenny Torres, Community Development Director)**
 2. C. Discussion and possible directions to staff on any and all matters regarding authorization to purchase a new Chevy Silverado for Building Safety Division. **(Jose A. Guzman, Acting Planning and Zoning Director)**
 2. D. Discussion and possible directions to staff on any and all matters regarding Resolution No. 2000. A resolution of the Mayor and City Council of the City of San Luis, Arizona, creating a street lighting improvement district and declaring its intention to purchase electricity, and maintain poles, luminaries, and underground conduit together with a charge for use of lighting facilities, for lighting public streets within an area described as Santa Cecilia Subdivision, Yuma County, Arizona. **(Jose A. Guzman, Acting Planning and Zoning Director)**
 2. E. Discussion and possible directions to staff on any and all matters regarding Resolution No. 2001. A resolution of the Mayor and City Council of the City of San Luis, Arizona, declaring its intention to provide the enhanced municipal services of operating and maintaining certain retention basins within the area described as Santa Cecilia Subdivision, Yuma County, Arizona. **(Jose A. Guzman, Acting Planning & Zoning Director)**
 2. F. Discussion and possible directions to staff on any and all matters regarding Resolution No. 2002. A resolution of the Mayor and City Council of the City of San Luis, Arizona, authorizing and directing the City Engineer to order the purchase of electricity and to order the maintenance of poles, luminaries and underground conduit incident to the installation of street lights for lighting public streets within an area described as Santa Cecilia Subdivision, Yuma County, Arizona. **(Jose A. Guzman, Acting Planning & Zoning Director)**

- 2. G.** Discussion and possible directions to staff on any and all matters regarding Resolution No. 2003. A resolution of the Mayor and City Council of the City of San Luis, Arizona, authorizing and directing the City Engineer to order the operation and maintenance of certain retention basins for an area described as Santa Cecilia Subdivision, Yuma County, Arizona. **(Jose A. Guzman, Acting Planning & Zoning Director)**

3. DISCUSSION ITEMS:

- 3. A.** Discussion and possible directions to staff on any and all matters regarding residential construction setbacks. **(Mayor Gerardo Sanchez, Jose Guzman, Acting Planning and Zoning Director; Eulogio Vera, Public Works Director and Hank Green, Fire Chief)**
- 3. B.** Update on any and all matters regarding bond projects. **(Mayor Gerardo Sanchez and Eulogio Vera, Director of Public Works)**
- 3. C.** Discussion and possible instructions to staff on any and all matter regarding the End of Year Report for completed and future road maintenance projects. **(Mayor Gerardo Sanchez and Eulogio Vera, Director of Public Works)**

4. ADJOURNMENT



AGENDA ITEM REVIEW FORM

Work Session**2.A.****Meeting Date:** 08/02/2017**Department Head:** Jenny Torres, Community Development Director, Community Development Department**Submitted By:** Dania Castillo, Economic Development Assistant, Community Development Department**Action Requested:** Discussion Item - No Action to be Taken**ITEM:**

Discussion and possible directions to staff on any and all matters regarding marketing efforts to increase public awareness of the City's activities, services, and promotion of economic development. **(Jenny Torres, Community Development Director)**

SUMMARY:

The Marketing and Public Relations Committee is made up of key department staff focused on providing communication and marketing expertise to improve the image of the community and promote business development. The committee developed a marketing proposal and is recommending specific marketing strategies that would increase public awareness of the activities and services being provided by the City and to promote economic development.

The cost to implement the following marketing strategies would result in a commitment of approximately \$77,200.00 for FY 2017-2018. The City Council allocated \$24,000.00 in their marketing budget. Several departments would contribute towards the cost of the LED sign. The City Council can select which strategies should be implemented per funding availability.

RECOMMENDATION / SUGGESTED MOTION:

Discussion and possible directions to staff only, no action.

Supporting information not attached to the Agenda Item Review Form:

N/A

Document to be Recorded?: No

N/A

Fiscal Impact

IS THERE FISCAL IMPACT ASSOCIATED WITH THIS ITEM:	N/A
CITY/STATE/FEDERAL FUNDS:	N/A
TOTAL:	N/A
BUDGETED AMOUNT:	N/A
AVAILABLE AMOUNT TO TRANSFER:	N/A

ACCT NAME & GL#/REMAINING BALANCE BEFORE PURCHASE: N/A

FISCAL IMPACT STATEMENT (IF THIS IS A BUDGET TRANSFER, YOU MUST ATTACH THE BUDGET ADJUSTMENT FORM):

No fiscal impact at this time, discussion item only. Staff seeking direction from council.

Attachments

Marketing Proposal

Marketing Proposal

The City of San Luis Marketing and Public Relations Committee goals are to increase public awareness of the City of San Luis activities and services; in addition to marketing our community outside of the region in order to attract targeted business and talent. The committee is made up of San Luis employees from key departments focused in providing communication and marketing expertise to improve the image of the community and promote business opportunities looking to expand or relocate. The committee is responsible to proposed and implement specific goals and strategies to council for FY2017-2018.

The cost to implement the following marketing strategies would result in a commitment of approximately \$77,200 for FY2017-2018. The cost can be share among departments and council.

- Create a marketing folder to conserve and make marketing material available to city staff.
- Invest in proper equipment that will assist staff in promoting the city.
- Create a list of projects/events and select specific services for marketing (Time lapse, before and after aerial photos) **\$2,000**
- Develop a cumulative project development projects map to promote projects.
- Contract with an AWC/NAU intern to assist in the communication and marketing of the community. **\$2,500**
- One year contract for 3 small billboards in the community **\$4,000**
- Purchase a digital sign that will allow the promotion of projects, events, news from all departments. **\$55,000**
- Develop an economic development video promoting the city.
- Develop a community video promoting the city. **\$2,000**
- Develop quarterly newsletters to be published in newspapers. **\$5,000**
- Develop monthly videos promoting projects and activities, highlighting successes, and educational programs from departments. Video will be watermark SLAZ media to identify that it's a city video. **\$1,000**
- Develop live and invitation videos during events to engage social media. **\$1,500**
- Create new contents and recommend improvements for new website for 2018.
- Informational flyers to be sent with utility bill **\$1,200**
- Radio/TV spots **\$3,000**

TOTAL \$77,200



AGENDA ITEM REVIEW FORM

Work Session

2.B.

Meeting Date: 08/02/2017

Department Head: Jenny Torres, Community Development Director, Community Development Department

Submitted By: Dania Castillo, Economic Development Assistant, Community Development Department

Action Requested: Discussion Item - No Action to be Taken

ITEM:

Discussion and possible directions to staff on any and all matters regarding contract with GIS Planning to provide ZoomProspector Enterprise Web Services. **(Jenny Torres, Community Development Director)**

SUMMARY:

ZoomProspector is a web application that provides comprehensive information to help new, expanding, and relocating businesses find a location in our community. Using geographical information system software, the website tools provide access to real estate search, demographics, workforce analysis, industry reports, along with dynamic mapping tools. ZoomProspector will improve our economic development web page image, increase jobs, retain businesses, and provide high quality online economic development services.

Staff is recommending option #2 with an annual subscription cost of \$8,100.00, setup and three (3) years of technical support for \$1,500.00 for a total amount of \$26,800.00 over a three (3) year contract. GIS Planning is a sole source provider, under Section 36.02 of the San Luis Code - Purchasing, where there is only one provider, the provisions in Section 36.01 (D) for obtaining three (3) written quotes is not required.

RECOMMENDATION / SUGGESTED MOTION:

Discussion and possible instructions to staff only, no action.

Supporting information not attached to the Agenda Item Review Form:

N/A

Document to be Recorded?: No

N/A

Fiscal Impact

IS THERE FISCAL IMPACT ASSOCIATED WITH THIS ITEM:	Yes
CITY/STATE/FEDERAL FUNDS:	City
TOTAL:	\$26,800.00
BUDGETED AMOUNT:	\$9,600.00

AVAILABLE AMOUNT TO TRANSFER:

N/A

ACCT NAME & GL#/REMAINING BALANCE BEFORE PURCHASE: Contractual Services/\$35,730.00

FISCAL IMPACT STATEMENT (IF THIS IS A BUDGET TRANSFER, YOU MUST ATTACH THE BUDGET ADJUSTMENT FORM):

Expense this fiscal year in the amount of \$9,600.00. The remaining \$17,200.00 will be incurred over a two (2) year term.

Attachments

Proposal

GIS Sole Source



CITY OF
San Luis
Gateway to the Sea of Cortez

ZoomProspector Enterprise Web Services



Confidential proposal submitted by: Bryan Beatty, Director of Sales
bryan@gisplanning.com (925) 944-4918 Mobile/Text

THIS PROPOSAL CONTAINS PROPRIETARY AND CONFIDENTIAL INFORMATION AND SHALL NOT BE USED, DISCLOSED OR REPRODUCED, IN WHOLE OR IN PART, FOR ANY PURPOSE WITHOUT THE PRIOR WRITTEN CONSENT OF GIS PLANNING, INC.

INTRODUCTION

GIS Planning is the gold standard in location analysis web service. As the inventors of the strategy, process and technology for combining Internet and GIS technology, we've made it our goal to both speed up and simplify the process of evaluating regions, properties and sites for business.

Our ZoomProspector Enterprise programs are implemented in 44 U.S. states and five Canadian provinces, a majority of the largest 100 cities in the USA, and represent over 600 successful projects implemented from coast-to-coast serving over 17,000 cities. When economic development organizations are serious about their image, increasing jobs, retaining businesses, and providing the highest-quality online economic development services, they know the right choice is always GIS Planning.

Acquired by the Financial Times in 2017, GIS Planning Inc. is now part of the largest economic development service in the world. The Financial Times is owned by Nikkei, a global media company. Our newly combined organization has a combined team of 70 people across research, editorial, marketing and sales, working with over 100 countries globally. The Financial Times is recognized internationally for its commitment to innovation and the authority, integrity and accuracy of its products. This affiliation offers many benefits to our clients, including benefits from access to additional resources and being part of a bigger team. Additional benefits include:

- Substantially enhanced resources for continued innovation and development of our suite of tools
- Access to the international reach and quality audience provided by the Financial Times. The Financial Times has a combined paid print and digital circulation of almost 1 million worldwide, with 36% of its audience being C-Suite and 62% business decision makers. This is the audience of decision makers that economic development professionals need to reach.
- A fully integrated global marketing campaign worth over \$1.5 million will drive traffic and awareness of ZoomProspector.com, ensuring it remains the go-to place for location decisions in the U.S. and our clients that are on the website.
- Free access to fDi Magazine (worth \$480 per year)
- Free access to the annual report examining FDI trends in North America

About ZoomProspector Enterprise

GIS Planning's ZoomProspector Enterprise web applications provide comprehensive information to help new, expanding and relocating businesses find the optimal location for success in your community. Using Geographic Information System (GIS) Software, our website tools provide access to in-depth information, including powerful real estate search, demographic and workforce analysis, industry reports, along with dynamic mapping tools. The applications are built upon proprietary GIS Planning and Google Maps technology, which offer state-of-the-art site selection analysis capabilities.

ZoomProspector Enterprise is integrated with GIS Planning's national site selection search engine, www.ZoomProspector.com, which allows users to conduct free national searches of communities and commercial properties that match their unique criteria. ZoomProspector.com is embedded into national media outlets visited by site selectors and expanding businesses, including BXJonline.com and BusinessFacilities.com.

WHY ZOOMPROSPECTOR?

Our location analysis web services is designed to offer proven tools and unique features to your end users and economic development office:

A range of [searchable data variables up to 75 times greater](#) than what is offered by other vendors

Sophisticated data analysis tools such as the [community comparison feature](#), [dynamic searching](#), and heat mapping;

The larger ZoomProspector ecosystem of websites, online instruments, strategic partnerships with site selection media and economic development institutions to [drive pre-qualified businesses back to your organization](#);

A dedicated client services team to offer [follow-up support and marketing assistance](#) through the life of your program.

5 Products in One

Our software products work beautifully together. ZoomProspector.com, the U.S. national site selection portal, drives qualified leads to your ZoomProspector Enterprise application. Our Proposal Generator works from within your application to enable the simple and effective building of proposals. Similarly, our 5 online data tools, known as Intelligence Components, make your website sticky, ensuring businesses and site selectors can do extensive data analysis and visualization directly from the website pages they visit. All these tools are mobile-friendly, so everyone can use them.



ZOOMPROSPECTOR ENTERPRISE CAPABILITIES

ZoomProspector Enterprise edition offers the following features designed to help expanding businesses find locations within your community.

Property Database

A searchable online database of available land and buildings based on user-defined criteria.

Demographic Analysis

Generate user-defined drive-time and radius analyses for complete overview of areas the surrounding each property.

Search by Businesses

Search businesses by name, type, number of employees and annual revenue.

Housing/Segmentation Data

Show your residential snapshot using this new tool.

Widget

Drive traffic to your website. This search tool is easily embeddable anywhere on a website, allowing users to search sites, buildings and/or communities and be directed to results on your application.

Property Reports

Generate presentation-quality property reports for available properties.

Demographic Reports

Save/ share demographic, consumer expenditure and business/ workforce reports within a user-defined distance from selected sites. **Updated twice annually, we are the only GIS Provider to update more than once a year.*

Business Reports

Analyze businesses within a user-entered radius of the site of interest to view potential suppliers and competitors. **Updated four times annually, we are the only GIS provider to update more than once a year.*

Save Reports

Save user-defined property, demographic and business reports in one location for further analysis and distribution.

Analysis Reports[AS1]

Capability to download/save/email/share reports in Word, Excel and Adobe Acrobat or through social media for further analysis and for presentations.

[Talent Pool](#)

Offer location-specific data about top college degrees, institutions and field of study by radius, drive-time, city, county and metro area. **View top institutions' degree production by number of graduates.** Drill down within data sets to learn more, export graphs, link, email and social sharing options.

[Thematic Mapping](#)

A visual display (also known as a "heat map") of 752 new specific demographic variables by geography, allowing a visitor to identify optimal business locations, which can be geographically understood in one glance. We are the only leading provider to offer more than 17 thematic map options.

[Map Legend Display](#)

A map legend describing graphic elements shown on the map interface.

[Property Owner & Real Estate Broker Property Listing Web Page](#)

Password protected system for brokers to add, delete, update properties through a user-friendly web site.

[Options for property imports](#)

We can connect to one source for property imports (such as large broker firms or MLS service). Multiple connections are also available for additional charge. (Note that some data sources may levy their own charges for this service.)

[Staff Administration Web Page](#)

Update and maintain property information.

[Enhanced Website Analytics](#)

Track the specific interests of website visitors with quantifiable metrics.

[Lead Gen ID](#)

Learn which specific companies are on your website, their search variables and reports viewed

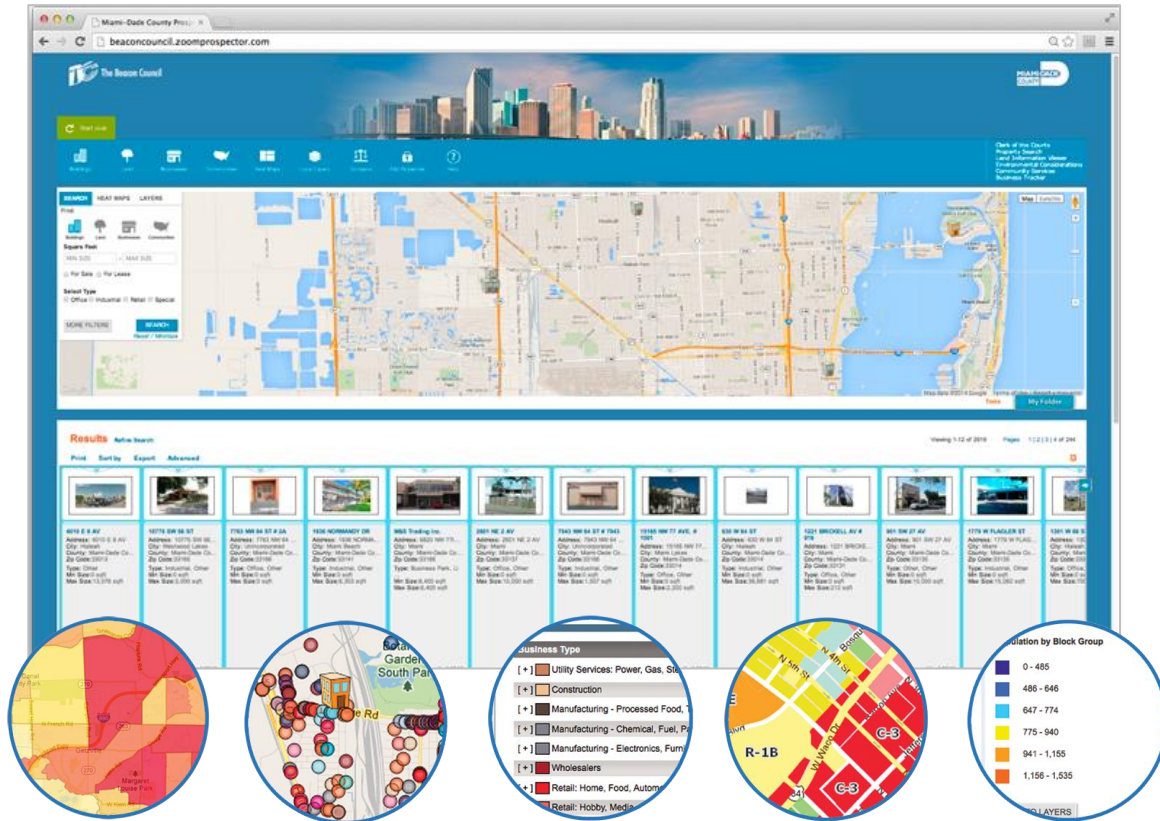
[Priority Listing on ZoomProspector.com](#)

Our clients' listed properties get priority rankings on our national site selection portal.

[Intelligence Components](#)

Our full-edition ZoomProspector Enterprise application includes the use of our 5 online data tools, known as Intelligence Components, on any of your website pages. The five interactive research tools are: Demographics, Business Data, Smart Mapping, Compare Communities and Community Profile Infographics.

EXAMPLE WEB APPLICATION



EXAMPLE TITLE

"This site is data-rich, with over 752 data variables. MiamiDadeSites.com ensures that critical data about our community is readily available to anyone who needs it. More importantly, through this site we can tell the story of our community 24 hours a day, 7 days a week."

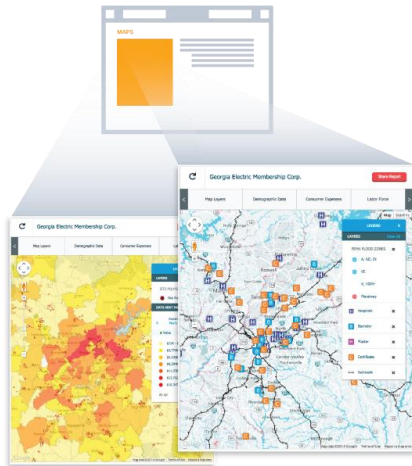
Miami Mayor Carlos A. Gimenez

ZOOMPROSPECTOR FEATURES

FEATURES	
Property Search	YES
Demographics	YES
Heat Maps	YES
Analysis by any Address	YES
Industry Mapping	YES
Business Search	YES
Talent Pool Reports	YES
Interactive Maps	YES
Local GIS Layers	YES
Compare Communities	YES
Mobile	YES
WEBSITE	
Embedded	YES
Microsite	YES
Custom URL	YES
Custom Banner & Color	YES
Lead Gen ID	YES
ADMINISTRATION	
Property Administration	YES
Proposal Generator	YES
RFP Manager	YES
Custom Property Variables	YES
One Property Data Feed or Import	YES
Knowledge Base	YES
MARKETING	
1st Tier Ranking on ZPDC	YES

[AS2]

INTELLIGENCE COMPONENTS



Our five online data tools engage website visitors with the data they need, without the need for them to click away. Your full-edition ZoomProspector Enterprise application includes the right to easily embed the user-friendly Intelligence Components on any of your website pages.

Demographics

Showcase demographics, consumer expenditures, and labor force data for the communities in your service area. Analyze demographics around a specific address by radius and drive-time. Visualize data distribution on attractive thematic heat maps. See how data breaks down on exportable charts and graphs.

Business Data

Search local industries and businesses right down to the 6-digit NAICS code. Map any industry with just one click. Analyze industry clusters to identify competitors, suppliers, and logistics.

Smart Mapping

Generate heat maps for demographics, labor force, and consumer expenditures. Maps include geographies, education, points of interest, your own custom GIS layers, and more.

Compare Communities

Compare demographics, labor force, and consumer spending for two or more communities side by side. Compare cities, counties, and regions.

Community Profile Infographics

Visualize key community data in an attractive infographic, making it easier for website visitors to absorb and understand at a glance. Data is automatically programmed and refreshed by GIS Planning, so no effort is required by your staff to keep it up to date. Display data about demographics, education, labor force, industry and local business, consumer spending, housing, and transportation.

ADDITIONAL fDi INTELLIGENCE DATA TOOLS



fDi Markets is the most comprehensive service tracking cross-border greenfield investment across all countries and sectors worldwide using real-time data.

- Improve lead generation / identify target companies
- Profile active investors in your region
- Develop your investment promotion strategy



fDi Benchmark is the only online tool to benchmark the competitiveness of countries and cities worldwide, giving you access to over 1,000 quality cost and data points in more than 65 sectors.

- Prepare more compelling business cases and value propositions
- Sharpen your marketing and PR
- Advocate key policies by backing up strategies with actual trends



PROJECT DELIVERABLES

Project Design

A meeting to kick-off the development of the project will include a discussion of functionality, design and data.

Property Feed

A searchable online database of available land and buildings based on user-defined criteria.

Interface Design

GIS Planning will develop a web interface design for the Internet GIS application. This will include customized colors selected by the City, the inclusion of a customized web page header with your logo, and additional design options shared by our project manager.

Intelligence Components

Build our smart search components directly on to your website pages. Our Demographic, Mapping and Business Intelligence Components allow website users to search for the information they need directly on the relevant pages. Intelligence Components are an innovative complement to your site selection website.

Mobile-Optimized

Your website will be fully optimized for use on smartphones and tablets.

Development of Web-GIS Features

GIS Planning will program the web-GIS tools and functionality of the application.

Online Testing and Review

GIS Planning will provide a development website for staff review and comment. This will include application testing.

Project Development Completion

GIS Planning will complete modifications and optimization of the web site completing project development.

Staff Training

GIS Planning will train your team so they understand how to update and manage the web site. **Updated four*

Marketing and Implementation Plan

Recommended policies for outreach to media, corporate real estate executives & site selection consultants, and new/expanding/relocating businesses, including a sample press kit and news release.

Ongoing Maintenance/Hosting

Ongoing technology assistance; website will be hosted on GIS Planning's servers.

INVESTMENT OPTIONS

Option #1: Annual Subscription (1 year)

ITEM DESCRIPTION	TOTAL
ZoomProspector Enterprise License with Google Maps	\$9,000

BUDGET INCLUDES
Sites and Buildings Database
Housing/Segmentation Data
752 New Thematic Maps
RFI Manager
Demographic Mapping and Reports to 60 miles
Business Data
Demographic Data
Marketing and Implementation Plan
Intelligence Components

ANNUAL RENEWAL	TOTAL
Annual Renewal	\$9,000

MicroSite Deployment Option	TOTAL
Setup and First Year Support	\$1,000
Annual Support Year 2+	\$500

Option #2: Annual Subscription (3 year term)

ITEM DESCRIPTION	TOTAL
ZoomProspector Enterprise License with Google Maps	\$8,100

BUDGET INCLUDES
Sites and Buildings Database
Housing/Segmentation Data
752 New Thematic Maps
RFI Manager
Demographic Mapping and Reports to 60 miles
Business Data
Demographic Data
Marketing and Implementation Plan
Intelligence Components

ANNUAL RENEWAL	TOTAL
Annual Renewal	\$8,100

MicroSite Deployment Option	TOTAL
Setup and First Year Support	\$1,000
Annual Support Year 2+	\$500

Option #3: Annual Subscription (5 year term)

ITEM DESCRIPTION	TOTAL
ZoomProspector Enterprise License with Google Maps	\$7,500

BUDGET INCLUDES
Sites and Buildings Database
Housing/Segmentation Data
752 New Thematic Maps
RFI Manager
Demographic Mapping and Reports to 60 miles
Business Data
Demographic Data
Marketing and Implementation Plan
Intelligence Components

ANNUAL RENEWAL	TOTAL
Annual Renewal	\$7,500

MicroSite Deployment Option	TOTAL
Setup and First Year Support	\$1,000
Annual Support Year 2+	\$500

Business Case for Sole-Sourcing GIS Planning's ZoomProspector

GIS Planning's service offering is unique in the marketplace and their Software as a Service (SaaS) provides exclusive tools and data that are only available through their product. These include the tools, features, and data expected by business investment decision-makers and site selection consultants. In addition, because the company invented the product category and continues to continually create leading-edge innovations, it has amassed a huge network of economic development and private sector partners that benefit from the reinforced ZoomProspector ecosystem platform. Specifically:

- GIS Planning offers the gold standard in GIS location analysis web services. Its ZoomProspector Enterprise technology is implemented in **43 states and serves the majority of the 100 largest cities in the United States**. Now available in Canada too! Over 13,000 cities, from Nova Scotia to California and from Alaska to Florida, are already served by its technology. This quality network limits client risk through the security of an industry standard for the future. It also decreases all EDOs' costs of innovation as service upgrades are amortized over a huge network of EDO clients, enabling many free upgrades.
- GIS Planning's data and data analysis tools are far beyond the offerings of any other product. Its ZoomProspector Enterprise service provides **upwards of 3,200% more data variables and 12,500% more demographic data heat maps** than some other products. This data encompasses the most frequently updated data sets in the industry (2 to 4 times annually, depending on the data set), which ensures users' search results are fresh and relevant. In addition, GIS Planning is the only vendor to provide the required ability to interactively map, list, and filter business industries to promote the existing local industry characteristics. It also enables the customization of data to industry targets for an EDO's area. These rich data sets are presented in attractive chart, graph, and mapping formats which can easily be shared or exported for use in reports.
- No other vendor can offer **true community site selection on a GIS website**, because GIS Planning patented this technology. This is one of the highest-level services necessary because businesses select a community before they search for a property to place their company. GIS Planning's patent makes this an exclusive benefit to its clients.
- Only GIS Planning clients have access to the **unique and extensive ZoomProspector ecosystem**, including listings on its national site selection database ZoomProspector.com, advertising and official partnerships with *Business Facilities* and *Business Expansion Journal*. In addition, only GIS Planning provides site selection and demographic information through Facebook widgets to target the social media network's massive user base. This ecosystem will also assist with expansions of companies through foreign direct investment, as ZoomProspector.com is a service of the SelectUSA Division of the U.S. Department of Commerce, which assists foreign companies by finding the right US location for their expansion.
- Because business people are performing more work tasks through smartphone mobile computing, GIS Planning developed the **only GIS site selection analysis solution that is**

fully optimized for use on a mobile device. Users can easily navigate all of the same tools with an interface optimized for use on a small screen, without sacrificing any of the features or functionality. Since as many as 20% of site selection website visitors are already using a mobile device (a number that is projected to grow exponentially in coming years), ZoomProspector Enterprise clients can remain confident they will be able to fully address their data requirements.

- GIS Planning's Intelligence Components put customized, interactive search tools right on the website pages users have visited, so the data they are seeking is right at their fingertips. GIS Planning conceived of and developed the Intelligence Components, and there are no other embeddable online data tools on the market that offer similar features or functionality. The perfect complement to a location analysis web service like ZoomProspector Enterprise, **Intelligence Components set the standard for the next generation of smart economic development websites.** Five different components are available for placement on multiple web pages: Demographic Analysis, Smart Mapping, Business Cluster Analysis, Compare Communities and Community Profile Infographics.
- To date, GIS Planning projects have created quantifiable value and assisted in the creation, attraction, and expansion of business for hundreds of state, regional, local and utility economic development organizations. There are many good reasons why **GIS Planning has well over 90% of the Internet GIS economic development market share.**

Here are some of the other features only available using ZoomProspector Enterprise (ZPE).

- **Demographic Reports-** Ability to save and share demographic, consumer expenditure, and business and workforce reports within a user-defined distance from a selected property. **Updated twice annually, GIS Planning is the only vendor to update more than once a year.**
- **Business Reports –** Ability to analyze businesses within a user-entered radius of the site of interest to view potential suppliers and competitors. **Updated four times annually, GIS Planning is the only vendor to update more than once a year.**
- **Industry Cluster Analysis –** Ability to pre-define your community's target industries or clusters for business analysis. **GIS Planning is the only vendor with a simple process to add EDOs industry clusters and target industries into a location-specific analysis tool.**
- **Thematic Mapping –** A visual display (also known as a "heat map") of 752 new specific demographic variables by geography, allowing a visitor to identify optimal business locations, which can be geographically understood in one glance. **GIS Planning is the only vendor to offer more than 15 thematic map options.**
- **Community Search –** Ability to search for communities in your geography using ZoomProspector.com data. **GIS Planning has a US Patent for this technology.**
- **Community Profile Infographics –** Full edition version of ZoomProspector Enterprise feature these sleek, compelling, interactive illustrations of key (and always up-to-date) community data on the Community tab. **GIS Planning is the only vendor to integrate extensive, interactive infographics into search results.**
- **Mobile Website –** Mobile design format for smartphones that allows users to view the same integrated property search, demographic analysis, business/ industry mapping and interactive maps they would see on a computer browser. This feature also offer users turn-by-turn driving directions. **GIS Planning is the only vendor to provide a mobile-optimized**

GIS site selection analysis service with all of the same features on the mobile device as the desktop service. This is also important because Google punishes websites with different mobile content by pushing those websites down in the search engine rankings.

- **Community Comparison Tool** – this new tool allows the user to compare US communities side by side when searching for where to expand/relocate their business. **GIS Planning is the only vendor that enables side-by-side comparisons of the local community to all other US cities and counties.**
- **Analytics Reports** – ZoomProspector analytics as well as Google analytics are provided. **GIS Planning provides proprietary business intelligence in its analytics that can help guide market-based economic development policy.**
- **Search by Businesses** – Ability to search businesses by name, type, number of employees and annual revenue. **GIS Planning provides the greatest number of business search filters and result visualizations.**
- **Housing Data** – Show residential characteristics using this new data feature.
- **Exportable Charts & Graphs** - Much of our data can be displayed visually in charts and graphs that can be easily exported for use in reports or presentation.
- **Wage and Unemployment Data** - This feature provides detailed information about wages by occupation and unemployment data.
- **Consumer Spending Data** - In addition to current year information, users can access projections 5 years out, effectively doubling the amount of data in these reports.
- **Pinpoint Tool** - This tool allows user to pinpoint anywhere on the map and access all demographic/business reports without having to identify a site or building.
- **Regular Product Upgrades** - We work hard to constantly improve our software applications, adding new data sources, features and functionality, so your website visitors appreciate a cutting-edge, data-rich user experience.

GIS Planning, Inc

By: _____

Juan Pablo Monzon, CEO

Date: September 7, 2016



AGENDA ITEM REVIEW FORM

Work Session

2.C.

Meeting Date: 08/02/2017

Department Head: Jose A. Guzman, Acting Planning & Zoning Director, Planning & Zoning Department

Submitted By: Jose A. Guzman, Acting Planning & Zoning Director, Planning & Zoning Department

Action Requested: Discussion Item - No Action to be Taken

ITEM:

Discussion and possible directions to staff on any and all matters regarding authorization to purchase a new Chevy Silverado for Building Safety Division. **(Jose A. Guzman, Acting Planning and Zoning Director)**

SUMMARY:

Staff seeks approval for purchase of a new Chevy Silverado for Building Safety Division. Subject truck would be used for field inspections as the current vehicles are more than 10 years old and maintenance is not cost effective. This truck will allow the inspector to carry the appropriate tools.

Planning and Zoning Department is requesting to purchase a 2018 Chevrolet Silverado 4x4 from Midway Chevrolet for the amount of \$31,039.12. Midway Chevrolet is under State Contract ADSPO 12-016669 which will be in accordance with the San Luis City Code-Purchasing Section 36.09, Cooperative Purchasing.

We also contacted Fisher Chevrolet in Yuma, Arizona and the local vendor provided a quote of \$32,321.78. The vehicle was approved in the budget for Fiscal Year 2017-2018 in the amount of \$34,300.

RECOMMENDATION / SUGGESTED MOTION:

Discussion and possible directions to staff only, no action.

Supporting information not attached to the Agenda Item Review Form:

N/A

Document to be Recorded?: No

N/A

Fiscal Impact

IS THERE FISCAL IMPACT ASSOCIATED WITH THIS ITEM:	Yes
CITY/STATE/FEDERAL FUNDS:	\$31,039.12 using State Contract
TOTAL:	\$31,039.12
BUDGETED AMOUNT:	\$34,300.00
AVAILABLE AMOUNT TO TRANSFER:	N/A

ACCT NAME & GL#/REMAINING BALANCE BEFORE PURCHASE: Capital Outlay-Equipment
#100-999-90000 with an
available balance of \$34,300.00

FISCAL IMPACT STATEMENT (IF THIS IS A BUDGET TRANSFER, YOU MUST ATTACH THE BUDGET ADJUSTMENT FORM):

This is a budgeter capital item from Capital Outlay- Equipment Account #100-999-90000. The total cost of this vehicle is the amount of \$31,039.12 utilizing Midway Chevrolet's State Contract. This account has a balance of \$34,300.00.

Attachments

Midway Chevrolet Quote
Chevrolet Silverado Specifications
Fisher Chevrolet Quote



ARIZONA STATE CONTRACT VEHICLE QUOTE

STATE CONTRACT # ADSP012-016669

QUOTE SENT TO: Martha Jimenez City of San Luis

CONTRACT VEHICLE 2017 Chevrolet Silverado Double Cab 4x4 PU

QUOTE DATE: 2/15/2017

CONTRACT PRICE PER ATTACHED SPECS \$ 28,298.00

Additional Options

Solar Tint Glass Dealer \$ 195.00

delivery Yuma County \$ 135.00

Sub Total \$ 28,628.00

Sales Tax (8.3 %) \$ 2,376.12

City of Phx 2016 Tax \$ 30.00

Tire Tax \$ 5.00

Extended Warranty

Capital Total Each Unit \$ 31,039.12

Quoted By: Gregg Ball Approximate Lead Time

Midway Chevrolet Nissan Isuzu Truck 8-12 weeks

2323 W. Bell Rd.

Phoenix, Az. 85023

gball@vtaig.com

Cell 602-733-2251 Stock quotes subject to prior sale

Quotes good through Manufactures current year build dates. Please call with any questions or concerns.

Thanks for the opportunity!

Martha Jimenez

From: Ball, Gregg <GBall@vtaig.com>
Sent: Thursday, July 20, 2017 11:12 AM
To: Martha Jimenez
Subject: RE: [External] Quote New Truck

Hello Martha,

We can still honor these prices. It will be a 2018 however.

Hope this helps!

Gregg Ball
Sales Director
Commercial, Fleet and Government
Midway Chevrolet, Nissan, Isuzu Truck
2201 W. Bell Rd.
Phoenix Arizona 85023
Cell: 602-733-2251
gball@vtaig.com

Arizona State Contract Dealer

Chevrolet, Nissan and Isuzu Truck
Cars-Trucks-Vans-SUV's Large and Small
Police, Fire, Utility, Specialty, Custom Builds, Medium Duty
Procurement & Grant Sales, Business Financing/Leasing, CAPS, Fleet/Commercial Service, Wholesale
Parts, Accessories, Collision.

From: Martha Jimenez [mailto:mjimenez@cityofsanluis.org]
Sent: 19 July, 2017 4:33 PM
To: Ball, Gregg
Cc: Jose A. Guzman
Subject: FW: [External] Quote New Truck

Hello Gregg,

Earlier this year I requested a quote for a work truck from you.
Attached is what you had quoted us.
We are getting ready to purchase a truck for our department soon.
Can you please provide me with an updated quote?

Thank you,

Martha R. Jimenez
Building Inspector

Prepared By:

Gregg Ball

Midway Chevrolet Nissan Isuzu

2323 West Bell Road

Phoenix, AZ 85023

Phone: (602) 733-2251

Fax: (602) 760-3377

Email: gball@vtaig.com

2017 Chevrolet Silverado 1500

CK15753 4WD Double Cab 143.5" Work Truck

Photo may not represent exact vehicle or selected equipment.

Prepared By:

Gregg Ball

Midway Chevrolet Nissan Isuzu

2323 West Bell Road

Phoenix, AZ 85023

Phone: (602) 733-2251

Fax: (602) 760-3377

Email: gball@vtaig.com

2017 Fleet/Non-Retail Chevrolet Silverado 1500 4WD Double Cab 143.5" W

STANDARD EQUIPMENT

STANDARD EQUIPMENT - 2017 Fleet/Non-Retail CK15753 4WD Double Cab 143.5" Work Truck

ENTERTAINMENT

- Audio system, 4.2" diagonal color display, AM/FM stereo with USB port and auxiliary jack with USB ports and auxiliary jack (Not available with (AZ3) 40/20/40 split-bench seat.)
- SiriusXM Satellite Radio, delete
- 6-speaker audio system (Standard on Crew Cab and Double Cab models.)

EXTERIOR

- Wheels, 17" x 8" (43.2 cm x 20.3 cm) painted steel
- Tires, P255/70R17 all-season, blackwall
- Wheel, full-size spare, 17" (43.2 cm) steel
- Tire, spare P255/70R17 all-season, blackwall (Included and only available with (RBZ) P255/70R17 all-season, blackwall tires.)
- Tire carrier lock, keyed cylinder lock that utilizes same key as ignition and door
- Bumpers, front, Black
- Bumpers, rear, Black
- Recovery hooks, front, frame-mounted, black (Included with 4WD models only.) (Standard with 4WD models. Available with 2WD models.)
- Lamps, cargo area, cab mounted with switch on center switch bank
- CornerStep, rear bumper
- Grille surround, chrome
- Active aero shutters, front
- Headlamps, high intensity discharge (HID) projector-beam with LED signature DRL
- Mirrors, outside manual, Black
- Glass, solar absorbing, tinted
- Door handles, Black
- Tailgate and bed rail protection cap, top
- Tailgate, locking utilizes same key as ignition and door (Not available with (AQQ) Remote Keyless Entry.) (Not available with (AQQ) Remote Keyless Entry. Not available with (ZW9) pickup box delete.)

Report content is based on current data version referenced. Any performance-related calculations are offered solely as guidelines. Actual unit performance will depend on your operating conditions.

GM AutoBook, Data Version: 477.0, Data updated 2/7/17

© Copyright 1986-2012 Chrome Data Solutions, LP. All rights reserved.

Customer File:

Prepared By:

Gregg Ball

Midway Chevrolet Nissan Isuzu

2323 West Bell Road

Phoenix, AZ 85023

Phone: (602) 733-2251

Fax: (602) 760-3377

Email: gball@vtaig.com

2017 Fleet/Non-Retail Chevrolet Silverado 1500 4WD Double Cab 143.5" W

STANDARD EQUIPMENT

STANDARD EQUIPMENT - 2017 Fleet/Non-Retail CK15753 4WD Double Cab 143.5" Work Truck

INTERIOR

- Seats, front 40/20/40 split-bench, 3-passenger, driver and front passenger manual recline with outboard head restraints and center fold-down armrest with storage. Vinyl has fixed lumbar and cloth has manual adjustable driver lumbar.
- Seat, rear full-width folding bench, 3-passenger (includes child seat top tether anchor) (Requires Double Cab models.)
- Floor covering, Graphite-colored rubberized-vinyl, no floor mats included
- Steering column, Tilt-Wheel, manual with theft-deterrent locking feature
- Instrumentation, 6-gauge cluster featuring speedometer, fuel level, engine temperature, tachometer, voltage and oil pressure
- Driver Information Center, 3.5-inch diagonal monochromatic display provides warning messages and basic vehicle information
- Windows, power front and rear with driver express up and down and express down on all other windows (Standard on Crew Cab and Double Cab.)
- Door locks, power
- Cruise control, electronic with set and resume speed, steering wheel-mounted
- Air conditioning, single-zone
- Assist handle, front passenger on A-pillar

Report content is based on current data version referenced. Any performance-related calculations are offered solely as guidelines. Actual unit performance will depend on your operating conditions.

GM AutoBook, Data Version: 477.0, Data updated 2/7/17

© Copyright 1986-2012 Chrome Data Solutions, LP. All rights reserved.

Customer File:

Prepared By:

Gregg Ball

Midway Chevrolet Nissan Isuzu

2323 West Bell Road

Phoenix, AZ 85023

Phone: (602) 733-2251

Fax: (602) 760-3377

Email: gball@vtaig.com

2017 Fleet/Non-Retail Chevrolet Silverado 1500 4WD Double Cab 143.5" W

STANDARD EQUIPMENT

STANDARD EQUIPMENT - 2017 Fleet/Non-Retail CK15753 4WD Double Cab 143.5" Work Truck

MECHANICAL

- Engine, 4.3L FlexFuel EcoTec3 V6 with Active Fuel Management, Direct Injection and Variable Valve Timing includes aluminum block construction with (FHS) E85 FlexFuel capability, capable of running on unleaded or up to 85% ethanol (285 hp [212 kW] @ 5300 rpm, 305 lb-ft of torque [413 Nm] @ 3900 rpm) (Includes (FHS) E85 FlexFuel capability. Not available on C*15743 models.)
- Transmission, 6-speed automatic, electronically controlled with overdrive and tow/haul mode. Includes Cruise Grade Braking and Powertrain Grade Braking
- Rear axle, 3.42 ratio (Standard on 4WD (LV3) 4.3L EcoTec3 V6 engine. Available with (L83) 5.3L EcoTec3 V8 engine.)
- Pickup box
- GVWR, 7100 lbs. (3221 kg) (Requires Crew Cab or Double Cab 4WD models and (LV3) 4.3L EcoTec3 V6 engine.)
- Transfer case, with floor-mounted shifter (Included with 4WD models only.)
- Four wheel drive
- Cooling, external engine oil cooler
- Battery, heavy-duty 730 cold-cranking amps/70 Amp-hr, maintenance-free with rundown protection and retained accessory power
- Alternator, 150 amps
- Frame, fully-boxed, hydroformed front section
- Steering, Electric Power Steering (EPS) assist, rack-and-pinion
- Brakes, 4-wheel disc with DURALIFE rotors, 4-wheel antilock
- Capless Fuel Fill
- Exhaust, aluminized stainless-steel muffler and tailpipe

Report content is based on current data version referenced. Any performance-related calculations are offered solely as guidelines. Actual unit performance will depend on your operating conditions.

GM AutoBook, Data Version: 477.0, Data updated 2/7/17

© Copyright 1986-2012 Chrome Data Solutions, LP. All rights reserved.

Customer File:

Prepared By:

Gregg Ball

Midway Chevrolet Nissan Isuzu

2323 West Bell Road

Phoenix, AZ 85023

Phone: (602) 733-2251

Fax: (602) 760-3377

Email: gball@vtaig.com

2017 Fleet/Non-Retail Chevrolet Silverado 1500 4WD Double Cab 143.5" W

STANDARD EQUIPMENT

STANDARD EQUIPMENT - 2017 Fleet/Non-Retail CK15753 4WD Double Cab 143.5" Work Truck

SAFETY

- StabiliTrak, stability control system with Proactive Roll Avoidance and traction control includes electronic trailer sway control and hill start assist
- Daytime Running Lamps with automatic exterior lamp control
- Air bags, dual-stage frontal and side-impact, driver and front passenger and head-curtain and seat-mounted side-impact, front and rear outboard seating positions with Passenger Sensing System (Always use safety belts and child restraints. Children are safer when properly secured in a rear seat in the appropriate child restraint. See the Owner's Manual for more information.)
- Teen Driver mode a configurable feature that lets you activate customizable vehicle settings associated with a key fob, to encourage safe driving behavior. It can limit certain vehicle features, and it prevents certain safety systems from being turned off. An in-vehicle report gives you information on your teen's driving habits and helps you to continue to coach your new driver
- Tire Pressure Monitoring System (does not apply to spare tire)

Report content is based on current data version referenced. Any performance-related calculations are offered solely as guidelines. Actual unit performance will depend on your operating conditions.

GM AutoBook, Data Version: 477.0, Data updated 2/7/17

© Copyright 1986-2012 Chrome Data Solutions, LP. All rights reserved.

Customer File:

Prepared By:

Gregg Ball
Midway Chevrolet Nissan Isuzu
2323 West Bell Road
Phoenix, AZ 85023
Phone: (602) 733-2251
Fax: (602) 760-3377
Email: gball@vtaig.com

2017 Fleet/Non-Retail Chevrolet Silverado 1500 4WD Double Cab 143.5" W

SELECTED MODEL & OPTIONS

SELECTED MODEL - 2017 Fleet/Non-Retail CK15753 4WD Double Cab 143.5" Work Truck

<u>Code</u>	<u>Description</u>
CK15753	2017 Chevrolet Silverado 1500 4WD Double Cab 143.5" Work Truck

SELECTED VEHICLE COLORS - 2017 Fleet/Non-Retail CK15753 4WD Double Cab 143.5" Work Truck

<u>Code</u>	<u>Description</u>
-	Interior: No color has been selected.
-	Exterior 1: No color has been selected.
-	Exterior 2: No color has been selected.

SELECTED OPTIONS - 2017 Fleet/Non-Retail CK15753 4WD Double Cab 143.5" Work Truck

CATEGORY

<u>Code</u>	<u>Description</u>
EMISSIONS FE9	EMISSIONS, FEDERAL REQUIREMENTS
ENGINE LV3	ENGINE, 4.3L FLEXFUEL ECOTEC3 V6 WITH ACTIVE FUEL MANAGEMENT, DIRECT INJECTION AND VARIABLE VALVE TIMING includes aluminum block construction with (FHS) E85 FlexFuel capability, capable of running on unleaded or up to 85% ethanol (285 hp [212 kW] @ 5300 rpm, 305 lb-ft of torque [413 Nm] @ 3900 rpm) (STD) (Includes (FHS) E85 FlexFuel capability. Not available on C*15743 models.)
TRANSMISSION MYC	TRANSMISSION, 6-SPEED AUTOMATIC, ELECTRONICALLY CONTROLLED with overdrive and tow/haul mode. Includes Cruise Grade Braking and Powertrain Grade Braking (STD)
GVWR C5Y	GVWR, 7100 LBS. (3221 KG) (STD) (Requires Crew Cab or Double Cab 4WD models and (LV3) 4.3L EcoTec3 V6 engine.)

Report content is based on current data version referenced. Any performance-related calculations are offered solely as guidelines. Actual unit performance will depend on your operating conditions.

GM AutoBook, Data Version: 477.0, Data updated 2/7/17
© Copyright 1986-2012 Chrome Data Solutions, LP. All rights reserved.
Customer File:

Prepared By:

Gregg Ball
Midway Chevrolet Nissan Isuzu
2323 West Bell Road
Phoenix, AZ 85023
Phone: (602) 733-2251
Fax: (602) 760-3377
Email: gball@vtaig.com

2017 Fleet/Non-Retail Chevrolet Silverado 1500 4WD Double Cab 143.5" W

SELECTED MODEL & OPTIONS

SELECTED OPTIONS - 2017 Fleet/Non-Retail CK15753 4WD Double Cab 143.5" Work Truck

CATEGORY

<u>Code</u>	<u>Description</u>
AXLE	
GU6	REAR AXLE, 3.42 RATIO (Standard on 4WD (LV3) 4.3L EcoTec3 V6 engine. Available with (L83) 5.3L EcoTec3 V8 engine.)
PREFERRED EQUIPMENT GROUP	
1WT	WORK TRUCK PREFERRED EQUIPMENT GROUP includes standard equipment
WHEELS	
RD6	WHEELS, 17" X 8" (43.2 CM X 20.3 CM) PAINTED STEEL (STD)
TIRES	
RBZ	TIRES, P255/70R17 ALL-SEASON, BLACKWALL (STD)
PAINT SCHEME	
ZY1	PAINT, SOLID
PAINT	
GAZ	SUMMIT WHITE
SEAT TYPE	
AE7	SEATS, FRONT 40/20/40 SPLIT-BENCH, 3-PASSENGER, DRIVER AND FRONT PASSENGER MANUAL RECLINE with outboard head restraints and center fold-down armrest with storage. Vinyl has fixed lumbar and cloth has manual adjustable driver lumbar. (STD)
SEAT TRIM	
H2Q	DARK ASH WITH JET BLACK INTERIOR ACCENTS, VINYL SEAT TRIM
RADIO	
IO3	AUDIO SYSTEM, 4.2" DIAGONAL COLOR DISPLAY, AM/FM STEREO with USB ports and auxiliary jack (Not available with (AZ3) 40/20/40 split-bench seat.) (STD)
ADDITIONAL EQUIPMENT	
PCR	WT FLEET CONVENIENCE PACKAGE All cabs include (DL8) outside heated power-adjustable mirrors, (A91) remote locking tailgate and (AQQ) Remote Keyless Entry. ((DL8) outside heated power-adjustable mirrors can be upgraded to (DPN) power camper mirrors. If (ZW9) pickup box delete is ordered (A91) remote locking tailgate will not be included.)

Report content is based on current data version referenced. Any performance-related calculations are offered solely as guidelines. Actual unit performance will depend on your operating conditions.

GM AutoBook, Data Version: 477.0, Data updated 2/7/17
© Copyright 1986-2012 Chrome Data Solutions, LP. All rights reserved.
Customer File:

Prepared By:
 Gregg Ball
 Midway Chevrolet Nissan Isuzu
 2323 West Bell Road
 Phoenix, AZ 85023
 Phone: (602) 733-2251
 Fax: (602) 760-3377
 Email: gball@vtaig.com

2017 Fleet/Non-Retail Chevrolet Silverado 1500 4WD Double Cab 143.5" W

SELECTED MODEL & OPTIONS

SELECTED OPTIONS - 2017 Fleet/Non-Retail CK15753 4WD Double Cab 143.5" Work Truck

CATEGORY

Code	Description
ADDITIONAL EQUIPMENT	
FHS	E85 FLEXFUEL CAPABLE OF RUNNING ON UNLEADED OR UP TO 85% ETHANOL (Optional with (L83) 5.3L EcoTec3 V8 engine with (MYC) 6-speed automatic transmission or included with (LV3) 4.3L EcoTec3 V6 engine. Not available with (ZW9) pickup box delete.)
NZZ	UNDERBODY SHIELD, TRANSFER CASE PROTECTION
DL8	MIRRORS, OUTSIDE HEATED POWER-ADJUSTABLE (includes driver's side spotter mirror) (Black. Included and only available with (PCR) WT Fleet Convenience Package.)
A91	REMOTE LOCKING TAILGATE (Included and only available with (AQQ) Remote Keyless Entry. Not available with (ZW9) pickup box delete.)
AQQ	REMOTE KEYLESS ENTRY, WITH 2 TRANSMITTERS (Included and only available with (PCR) WT Fleet Convenience Package. Includes (A91) remote locking tailgate.)
R9Y	FLEET FREE MAINTENANCE CREDIT This option code provides a credit in lieu of the free oil changes, tire rotations and inspections (2 maximum), during the first 24 months and 24,000 miles period for this ordered vehicle. The invoice will detail the applicable credit. The customer will be responsible for all oil change, tire rotations and inspections costs for this vehicle. (Requires one of the following Fleet or Government order types: FBC, FBN, FCA, FCN, FEF, FLS, FNR, FRC or FGO. Not available with FDR order types.) *CREDIT*
VQ3	FLEET PROCESSING OPTION

OPTIONS TOTAL

Report content is based on current data version referenced. Any performance-related calculations are offered solely as guidelines. Actual unit performance will depend on your operating conditions.

GM AutoBook, Data Version: 477.0, Data updated 2/7/17
 © Copyright 1986-2012 Chrome Data Solutions, LP. All rights reserved.
 Customer File:

Martha Jimenez

From: gunny@itsafisher.com
Sent: Thursday, July 27, 2017 1:13 PM
To: Martha Jimenez
Subject: RE: FW: TRUCK QUOTE

Importance: High

Martha,

The price out the door for the truck will be \$32,321.78 with tax and no license plates.

Thank you

Gunny

----- Original Message -----

Subject: RE: FW: TRUCK QUOTE
From: Martha Jimenez <mjimenez@cityofsanluis.org>
Date: Thu, July 27, 2017 12:59 pm
To: "gunny@itsafisher.com" <gunny@itsafisher.com>

Hello Gunny,

Thanks again for the quote.

Could you provide me with an estimate of what the "plus fees" would be?

Martha R. Jimenez

Building Inspector



Building Safety Division
City of San Luis
Direct Line: (928) 341-8567
Office: (928) 341-8565
Fax: (928) 341-8599
<http://www.cityofsanluis.org/>

From: gunny@itsafisher.com [<mailto:gunny@itsafisher.com>]
Sent: Wednesday, July 19, 2017 5:02 PM
To: Martha Jimenez <mjimenez@cityofsanluis.org>
Subject: RE: FW: TRUCK QUOTE

Martha,

I was able to submit for bid assistance for this 2018 Model your price after \$10,000 rebate will be \$29,800 plus fees.

Thank you

Gunny

----- Original Message -----

Subject: FW: TRUCK QUOTE

From: Martha Jimenez <mjimenez@cityofsanluis.org>

Date: Wed, July 19, 2017 4:34 pm

To: "gunny@itsafisher.com" <gunny@itsafisher.com>

Cc: "Jose A. Guzman" <jaguzman@cityofsanluis.org>

Hello Gunny,

Earlier this year I requested a quote for a work truck from you.

Attached is what you sent us.

We are getting ready to purchase a truck for our department soon.

Can you please provide me with an updated quote?

Thank you,

Martha R. Jimenez

Building Inspector

Building Safety Division

City of San Luis

Direct Line: (928) 341-8567

Office: (928) 341-8565

Fax: (928) 341-8599

<http://www.cityofsanluis.org/>

From: gunny@itsafisher.com [<mailto:gunny@itsafisher.com>]

Sent: Tuesday, April 25, 2017 2:18 PM

To: Martha Jimenez <mjimenez@cityofsanluis.org>

Subject: TRUCK QUOTE

Martha,

I have no way to know what the rebates will be on 2018 model but will try to give good estimate.

The Bid assistance is not yet available but on this truck 2017 model the rebate is \$9500

I think it will be at least \$5000 so this truck would be about \$38,000 out the door.

Thank you



AGENDA ITEM REVIEW FORM

Work Session**2.D.****Meeting Date:** 08/02/2017**Department Head:** Jose A. Guzman, Acting Planning & Zoning Director, Planning & Zoning Department**Submitted By:** Jose A. Guzman, Acting Planning & Zoning Director, Planning & Zoning Department**Action Requested:** Discussion Item - No Action to be
Taken
Resolution

ITEM:

Discussion and possible directions to staff on any and all matters regarding Resolution No. 2000. A resolution of the Mayor and City Council of the City of San Luis, Arizona, creating a street lighting improvement district and declaring its intention to purchase electricity, and maintain poles, luminaries, and underground conduit together with a charge for use of lighting facilities, for lighting public streets within an area described as Santa Cecilia Subdivision, Yuma County, Arizona. **(Jose A. Guzman, Acting Planning and Zoning Director)**

SUMMARY:

As a requirement of the City of San Luis subdivision regulations, a Street Lighting Improvement District is required for approved subdivisions. The City has received a petition to form a Street Lighting Improvement District for Santa Cecilia Subdivision. This is the resolution to create that district.

RECOMMENDATION / SUGGESTED MOTION:

Discussion and possible directions to staff only, no action.

Supporting information not attached to the Agenda Item Review Form:

N/A

Document to be Recorded?: No

N/A

Fiscal Impact**IS THERE FISCAL IMPACT ASSOCIATED WITH THIS ITEM:** N/A**CITY/STATE/FEDERAL FUNDS:** N/A**TOTAL:** N/A**BUDGETED AMOUNT:** N/A**AVAILABLE AMOUNT TO TRANSFER:** N/A**ACCT NAME & GL#/REMAINING BALANCE BEFORE PURCHASE:** N/A**FISCAL IMPACT STATEMENT (IF THIS IS A BUDGET TRANSFER, YOU MUST ATTACH THE BUDGET ADJUSTMENT FORM):**

N/A

Attachments

Resolution No. 2000



Resolution

OFFICE OF THE
MAYOR
CITY OF SAN LUIS

NO. 2000

A RESOLUTION OF THE MAYOR AND CITY COUNCIL OF THE CITY OF SAN LUIS, ARIZONA, CREATING A STREET LIGHTING IMPROVEMENT DISTRICT AND DECLARING ITS INTENTION TO PURCHASE ELECTRICITY, AND MAINTAIN POLES, LUMINARIES, AND UNDERGROUND CONDUIT, TOGETHER WITH A CHARGE FOR USE OF LIGHTING FACILITIES, FOR LIGHTING PUBLIC STREETS WITHIN AN AREA DESCRIBED AS SANTA CECILIA SUBDIVISION, YUMA COUNTY, ARIZONA.

WHEREAS, a petition for the street lighting improvement district has been presented by all of the real property owners of record for the real property described as Santa Cecilia Subdivision, Yuma County, Arizona.

NOW, THEREFORE, BE IT RESOLVED, by the Mayor and Council of the City of San Luis, Arizona, as follows:

Section 1: The City of San Luis hereby creates a street lighting improvement district to be tentatively known as Santa Cecilia Street Lighting Improvement District for the area described as Santa Cecilia Subdivision, Yuma County, Arizona, and as further shown on Exhibit "A" attached hereto.

Section 2: That the public interest and convenience require, and it is the intention of the governing body of the City of San Luis to order the purchase of electricity which includes a charge for the maintenance and use of the lighting facilities. That the maintenance and purchase of electricity is of more than local or ordinary public benefit, and the cost is hereby made chargeable upon the District, and the District benefited by said streetlights is legally described as set forth in Section 1 hereinabove.

Section 3: That the cost of the electricity shall be the established rate of Arizona Public Service for street lighting service.

Section 4: That the lighting of the streets in the area described shall be in accordance with the lighting location plan hereby approved and adopted by the Council of the City of San Luis, Arizona, and on file in the office of the City Engineer, tentatively known as Santa Cecilia Street Lighting Improvement District.

Section 5: In no event will the City of San Luis or any officer thereof be liable for any portion of the cost of supplying electricity to said Improvement District, no assessment for district purposes against the property within such district exceeds the maximum contained in A.R.S. § 48-616.D, in which event the City of San Luis shall be liable for the cost of supplying electricity in excess of said statutory maximums.

Section 6: The City Council shall make an annual statement of the expenses relative to the District which shall be provided for by the levy and collection of the ad valorem taxes of the assessed value of all property, real and personal, in the District as provided in Title 48 of the Arizona Revised Statutes, which taxes shall be collected in the amount shown by the statement adopted by the City Council.

PASSED AND ADOPTED by the Mayor and City Council of the City of San Luis, Arizona, this _____ day of _____, 2017.

Gerardo Sanchez, Mayor

ATTEST:

Sonia Cornelio, City Clerk

APPROVED AS TO FORM:

Kay Marion Macuil, City Attorney



AGENDA ITEM REVIEW FORM

Work Session

2.E.

Meeting Date: 08/02/2017

Department Head: Jose A. Guzman, Acting Planning & Zoning Director, Planning & Zoning Department

Submitted By: Jose A. Guzman, Acting Planning & Zoning Director, Planning & Zoning Department

Action Requested: Discussion Item - No Action to be
Taken
Resolution

ITEM:

Discussion and possible directions to staff on any and all matters regarding Resolution No. 2001. A resolution of the Mayor and City Council of the City of San Luis, Arizona, declaring its intention to provide the enhanced municipal services of operating and maintaining certain retention basins within the area described as Santa Cecilia Subdivision, Yuma County, Arizona. **(Jose A. Guzman, Acting Planning & Zoning Director)**

SUMMARY:

As a requirement of the City of San Luis subdivision regulations, an enhanced municipal services improvement district is required for approved subdivisions. The City has received a petition to form an enhanced municipal services improvement district for Santa Cecilia Subdivision. This is the resolution to create that district.

RECOMMENDATION / SUGGESTED MOTION:

Discussion and possible directions to staff only, no action.

Supporting information not attached to the Agenda Item Review Form:

N/A

Document to be Recorded?: No

N/A

Fiscal Impact

IS THERE FISCAL IMPACT ASSOCIATED WITH THIS ITEM: N/A

CITY/STATE/FEDERAL FUNDS: N/A

TOTAL: N/A

BUDGETED AMOUNT: N/A

AVAILABLE AMOUNT TO TRANSFER: N/A

ACCT NAME & GL#/REMAINING BALANCE BEFORE PURCHASE: N/A

FISCAL IMPACT STATEMENT (IF THIS IS A BUDGET TRANSFER, YOU MUST ATTACH THE BUDGET ADJUSTMENT FORM):

N/A

Attachments

Resolution No. 2001



Resolution

OFFICE OF THE
MAYOR
CITY OF SAN LUIS

NO. 2001

A RESOLUTION OF THE MAYOR AND CITY COUNCIL OF THE CITY OF SAN LUIS, ARIZONA, DECLARING ITS INTENTION TO PROVIDE THE ENHANCED MUNICIPAL SERVICES OF OPERATING AND MAINTAINING CERTAIN RETENTION BASINS WITHIN THE AREA DESCRIBED AS SANTA CECILIA SUBDIVISION, YUMA COUNTY, ARIZONA.

WHEREAS, a petition for enhanced municipal services has been presented by all of the real property owners of record for the real property described as Santa Cecilia Subdivision, Yuma County, Arizona.

NOW, THEREFORE, BE IT RESOLVED, by the Mayor and Council of the City of San Luis, Arizona, as follows:

Section 1: The City of San Luis hereby creates an enhanced municipal services district to be tentatively known as Santa Cecilia Municipal Services Improvement District for the area described as Santa Cecilia Subdivision, City of San Luis, Yuma County, Arizona, and as further shown on the subdivision plat or plats of record for Santa Cecilia Subdivision with the Office of Public Works Director and the Office of City Engineer of the City of San Luis, Arizona. The legal description for the district is as follows:

See exhibit A attached hereto.

Section 2: That the public interest requires, and it is the intention of the governing body of the City of San Luis to provide, for the enhance municipal services of the operation and maintenance of retention basins described as Santa Cecilia Subdivision, City of San Luis, Yuma County, Arizona.

Section 3: That the operation and maintenance of said retention basins shall be in accordance with the plan showing location, type and character of the enhanced municipal services, as well as duplicate diagrams of the property contained within the improvement district which is here by approved and adopted by the Council of the City of San Luis, Arizona, and on file in the office of the City Engineer, tentatively known as Santa Cecilia Municipal Services Improvement District.

Section 4: That all lots within the Improvement District will benefit by the enhanced municipal services of the operation and maintenance of said retention basins at a higher level or greater degree than provided in the remainder of the City of San Luis that is not included in the Improvement District.

Section 5: That the City Council shall make an annual statement and/or statements of the expenses relative to the District for the operation and maintenance of said retention basins which shall be provided by the levy and collection of the ad valorem taxes of the assessed value of all property, real and personal, in the District as provided in Title 48 of the Arizona Revised Statutes, which taxes shall be collected in the amount shown by the statement adopted by the City Council.

PASSED AND ADOPTED by the Mayor and City Council of the City of San Luis, Arizona, this _____ day of _____, 2017.

Gerardo Sanchez, Mayor

ATTEST:

Sonia Cornelio, City Clerk

APPROVED AS TO FORM:

Kay Marion Macuil, City Attorney



AGENDA ITEM REVIEW FORM

Work Session**2.F.****Meeting Date:** 08/02/2017**Department Head:** Jose A. Guzman, Acting Planning & Zoning Director, Planning & Zoning Department**Submitted By:** Jose A. Guzman, Acting Planning & Zoning Director, Planning & Zoning Department**Action Requested:** Discussion Item - No Action to be
Taken
Resolution

ITEM:

Discussion and possible directions to staff on any and all matters regarding Resolution No. 2002. A resolution of the Mayor and City Council of the City of San Luis, Arizona, authorizing and directing the City Engineer to order the purchase of electricity and to order the maintenance of poles, luminaries and underground conduit incident to the installation of street lights for lighting public streets within an area described as Santa Cecilia Subdivision, Yuma County, Arizona. **(Jose A. Guzman, Acting Planning & Zoning Director)**

SUMMARY:

Once a resolution creating a Street Lighting District is approved, a resolution authorizing work and approving the implementation of the district is required. This is the resolution implementing that district.

RECOMMENDATION / SUGGESTED MOTION:

Discussion and possible directions to staff only, no action.

Supporting information not attached to the Agenda Item Review Form:

N/A

Document to be Recorded?: No

N/A

Fiscal Impact

IS THERE FISCAL IMPACT ASSOCIATED WITH THIS ITEM: N/A

CITY/STATE/FEDERAL FUNDS: N/A

TOTAL: N/A

BUDGETED AMOUNT: N/A

AVAILABLE AMOUNT TO TRANSFER: N/A

ACCT NAME & GL#/REMAINING BALANCE BEFORE PURCHASE: N/A

FISCAL IMPACT STATEMENT (IF THIS IS A BUDGET TRANSFER, YOU MUST ATTACH THE BUDGET ADJUSTMENT FORM):

N/A

Attachments



Resolution

OFFICE OF THE
MAYOR
CITY OF SAN LUIS

NO. 2002

A RESOLUTION OF THE MAYOR AND CITY COUNCIL OF THE CITY OF SAN LUIS, ARIZONA, AUTHORIZING AND DIRECTING THE CITY ENGINEER TO ORDER THE PURCHASE OF ELECTRICITY AND TO ORDER THE MAINTENANCE OF POLES, LUMINARIES AND UNDERGROUND CONDUIT INCIDENT TO INSTALLATION OF STREET LIGHTS FOR LIGHTING PUBLIC STREETS WITHIN AN AREA DESCRIBED AS SANTA CECILIA SUBDIVISION, YUMA COUNTY, ARIZONA.

WHEREAS, the Mayor and City Council did pass Resolution of Intention No. 2000 for Santa Cecilia Street Lighting Improvement District declaring the intention of the City to purchase electricity including a charge for the use of lighting facilities; and

WHEREAS, the cost of lighting is to be assessed on certain district known as Santa Cecilia Street Lighting Improvement District; and

WHEREAS, the petition for street lighting improvement district which was used to create Santa Cecilia Street Lighting Improvement District was signed by all of the real property owners within said district and A.R.S § 48-617.A authorizes the immediate jurisdiction to adopt a resolution ordering the improvements, pursuant to the provisions of A.R.S. § 48-581, without the necessity of publication and posting of the resolution of intention provided for in A.R.S § 48-578.

NOW, THEREFORE, BE IT RESOLVED, by the Mayor and Council of the City of San Luis, Arizona, that the City Engineer be empowered and directed to proceed with the improvement of Santa Cecilia Street Lighting Improvement District.

PASSED AND ADOPTED by the Mayor and City Council of the City of San Luis, Arizona, this _____ day of _____, 2017.

Gerardo Sanchez, Mayor

ATTEST:

Sonia Cornelio, City Clerk

APPROVED AS TO FORM:

Kay Marion Macuil, City Attorney



AGENDA ITEM REVIEW FORM

Work Session

2.G.

Meeting Date: 08/02/2017

Department Head: Jose A. Guzman, Acting Planning & Zoning Director, Planning & Zoning Department

Submitted By: Jose A. Guzman, Acting Planning & Zoning Director, Planning & Zoning Department

Action Requested: Discussion Item - No Action to be
Taken
Resolution

ITEM:

Discussion and possible directions to staff on any and all matters regarding Resolution No. 2003. A resolution of the Mayor and City Council of the City of San Luis, Arizona, authorizing and directing the City Engineer to order the operation and maintenance of certain retention basins for an area described as Santa Cecilia Subdivision, Yuma County, Arizona. **(Jose A. Guzman, Acting Planning & Zoning Director)**

SUMMARY:

Once a resolution creating an Enhanced Municipal Services District is approved, a resolution authorizing work and approving the implementation of the district is required. This is the resolution implementing that district.

RECOMMENDATION / SUGGESTED MOTION:

Discussion and possible directions to staff only, no action.

Supporting information not attached to the Agenda Item Review Form:

N/A

Document to be Recorded?: No

N/A

Fiscal Impact

IS THERE FISCAL IMPACT ASSOCIATED WITH THIS ITEM: N/A

CITY/STATE/FEDERAL FUNDS: N/A

TOTAL: N/A

BUDGETED AMOUNT: N/A

AVAILABLE AMOUNT TO TRANSFER: N/A

ACCT NAME & GL#/REMAINING BALANCE BEFORE PURCHASE: N/A

FISCAL IMPACT STATEMENT (IF THIS IS A BUDGET TRANSFER, YOU MUST ATTACH THE BUDGET ADJUSTMENT FORM):

N/A

Attachments



Resolution

OFFICE OF THE
MAYOR
CITY OF SAN LUIS

NO. 2003

A RESOLUTION OF THE MAYOR AND CITY COUNCIL OF THE CITY OF SAN LUIS, ARIZONA, AUTHORIZING AND DIRECTING THE CITY ENGINEER TO ORDER THE OPERATION AND MAINTENANCE OF CERTAIN RETENTION BASINS FOR AN AREA DESCRIBED AS SANTA CECILIA SUBDIVISION, YUMA COUNTY, ARIZONA.

WHEREAS, the Mayor and City Council did pass Resolution of Intention No. 2001 for Santa Cecilia Municipal Services Improvement District declaring the intention of the City to operate and maintain certain retention basins for an area described as Santa Cecilia Subdivision, Yuma County, Arizona; and

WHEREAS, the cost of operating and maintaining said retention basins is to be assessed on a certain district known as Santa Cecilia Municipal Services Improvement District; and

WHEREAS, the petition for enhanced municipal services improvement district which was used to create the Santa Cecilia Municipal Services Improvement District was signed by all of the real property owners within said district and A.R.S. § 48-575 C. authorized the immediate jurisdiction to adopt a resolution ordering the improvements, pursuant to the provision of A.R.S. § 48-581, without the necessity of publication and posting of the resolution of intention provided for in A.R.S § 48-578.

NOW, THEREFORE, BE IT RESOLVED, by the Mayor and Council of the City of San Luis, Arizona, that the City Engineer be empowered and directed to proceed with the enhanced municipal services of the improvement of Santa Cecilia Municipal Services Improvement District.

PASSED AND ADOPTED by the Mayor and City Council of the City of San Luis, Arizona, this _____ day of _____, 2017.

Gerardo Sanchez, Mayor

ATTEST:

Sonia Cornelio, City Clerk

APPROVED AS TO FORM:

Kay Marion Macuil, City Attorney



AGENDA ITEM REVIEW FORM

Work Session

3.A.

Meeting Date: 08/02/2017

Department Head: Sonia Cornelio, City Clerk, City Clerk's Office

Submitted By: Sonia Cornelio, City Clerk, City Clerk's Office

Action Requested: Discussion Item - No Action to be Taken

ITEM:

Discussion and possible directions to staff on any and all matters regarding residential construction setbacks. (Mayor Gerardo Sanchez, Jose Guzman, Acting Planning and Zoning Director; Eulogio Vera, Public Works Director and Hank Green, Fire Chief)

SUMMARY:

Mayor Gerardo Sanchez requested that this item be placed on the Work Session for August 2, 2017 for discussion.

RECOMMENDATION / SUGGESTED MOTION:

Discussion and possible directions to staff only, no action.

Supporting information not attached to the Agenda Item Review Form:

N/A

Document to be Recorded?: No

N/A

Fiscal Impact

IS THERE FISCAL IMPACT ASSOCIATED WITH THIS ITEM: N/A

CITY/STATE/FEDERAL FUNDS: N/A

TOTAL: N/A

BUDGETED AMOUNT: N/A

AVAILABLE AMOUNT TO TRANSFER: N/A

ACCT NAME & GL#/REMAINING BALANCE BEFORE PURCHASE: N/A

FISCAL IMPACT STATEMENT (IF THIS IS A BUDGET TRANSFER, YOU MUST ATTACH THE BUDGET ADJUSTMENT FORM):

There is no fiscal impact associated with this item.



AGENDA ITEM REVIEW FORM

Work Session

3.B.

Meeting Date: 08/02/2017

Department Head: Sonia Cornelio, City Clerk, City Clerk's Office

Submitted By: Sonia Cornelio, City Clerk, City Clerk's Office

Action Requested: Discussion Item - No Action to be Taken

ITEM:

Update on any and all matters regarding bond projects. (Mayor Gerardo Sanchez and Eulogio Vera, Director of Public Works)

SUMMARY:

Mayor Gerardo Sanchez requested that this item be placed on the Work Session for August 2, 2017 for discussion on approximately \$6 Million Bond water projects.

RECOMMENDATION / SUGGESTED MOTION:

Discussion and possible directions to staff only, no action.

Supporting information not attached to the Agenda Item Review Form:

N/A

Document to be Recorded?: No

N/A

Fiscal Impact

IS THERE FISCAL IMPACT ASSOCIATED WITH THIS ITEM: N/A

CITY/STATE/FEDERAL FUNDS: N/A

TOTAL: N/A

BUDGETED AMOUNT: N/A

AVAILABLE AMOUNT TO TRANSFER: N/A

ACCT NAME & GL#/REMAINING BALANCE BEFORE PURCHASE: N/A

FISCAL IMPACT STATEMENT (IF THIS IS A BUDGET TRANSFER, YOU MUST ATTACH THE BUDGET ADJUSTMENT FORM):

There is no fiscal impact associated with this item.



AGENDA ITEM REVIEW FORM

Work Session**3.C.****Meeting Date:** 08/02/2017**Department Head:** Sonia Cornelio, City Clerk, City Clerk's Office**Submitted By:** Sonia Cornelio, City Clerk, City Clerk's Office**Action Requested:** Discussion Item - No Action to be Taken**ITEM:**

Discussion and possible instructions to staff on any and all matter regarding the End of Year Report for completed and future road maintenance projects. **(Mayor Gerardo Sanchez and Eulogio Vera, Director of Public Works)**

SUMMARY:

Mayor Gerardo Sanchez requested that this item be placed on the Work Session for August 2, 2017 for discussion on the End of Year Report relating to completed and future road maintenance projects.

RECOMMENDATION / SUGGESTED MOTION:

Discussion and possible directions to staff only, no action.

Supporting information not attached to the Agenda Item Review Form:

N/A

Document to be Recorded?: No

N/A

Fiscal Impact

IS THERE FISCAL IMPACT ASSOCIATED WITH THIS ITEM: N/A

CITY/STATE/FEDERAL FUNDS: N/A

TOTAL: N/A

BUDGETED AMOUNT: N/A

AVAILABLE AMOUNT TO TRANSFER: N/A

ACCT NAME & GL#/REMAINING BALANCE BEFORE PURCHASE: N/A

FISCAL IMPACT STATEMENT (IF THIS IS A BUDGET TRANSFER, YOU MUST ATTACH THE BUDGET ADJUSTMENT FORM):

There is no fiscal impact associated with this item.