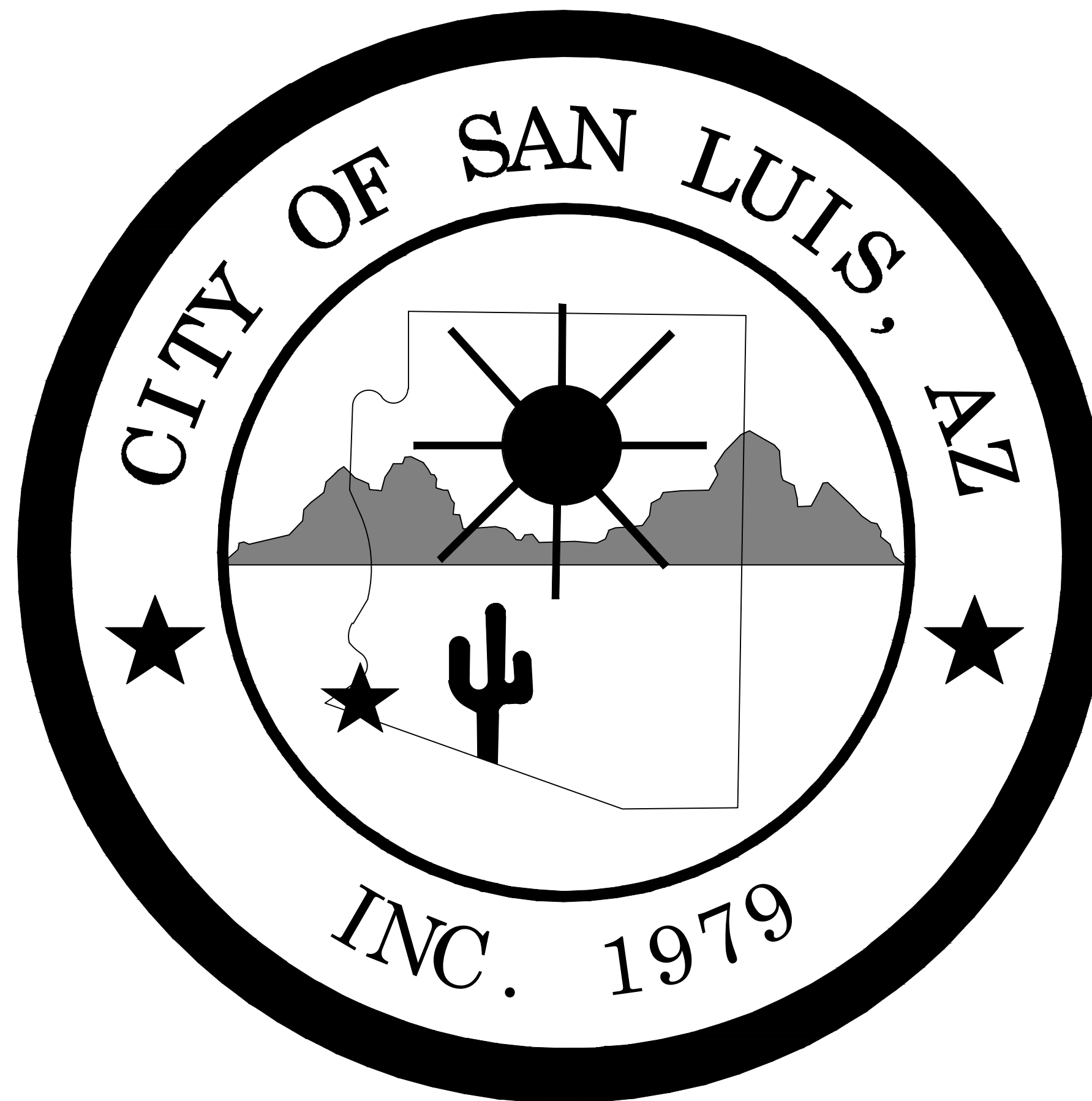


CITY OF SAN LUIS
INTERNATIONAL PLAZA 1 ROADWAY IMPROVEMENTS
(PICENO DRIVE, BENTU AVENUE, CADENA AVENUE, AND DIMAS AVENUE)

Mayor
GERARDO SANCHEZ

Vice-Mayor
MATIAS ROSALES

City Council
AFRICA LUNA-CARRASCO
GLORIA TORRES
MARIA CECILIA RAMOS
MARIO BUCHANAN JR.
RUBEN WALSH



City Manager
TADEO A. DE LA HOYA

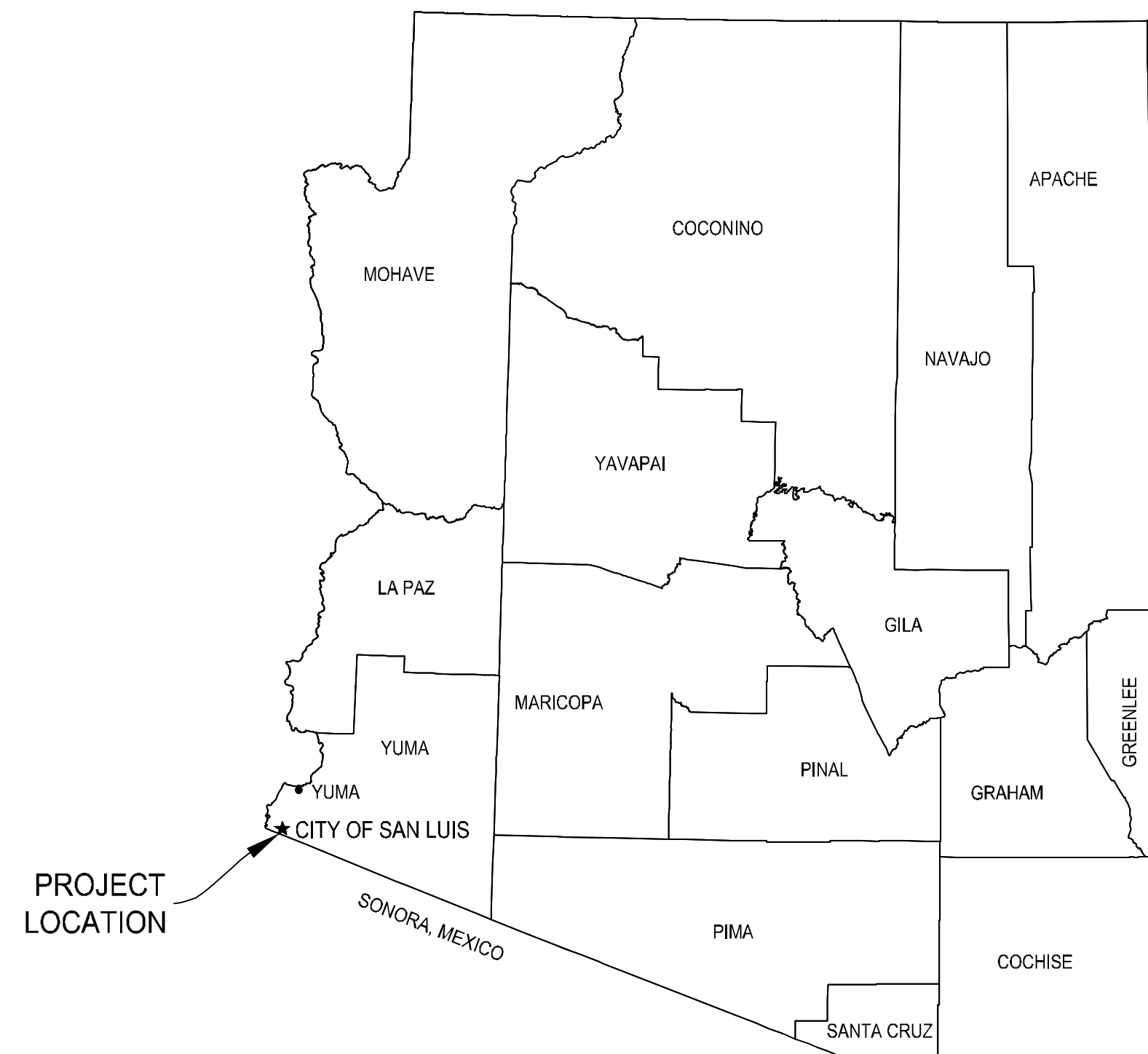
**Director of
Public Works**
EULOGIO VERA, P.E.

APPROVED: _____ Date: _____
City Manager

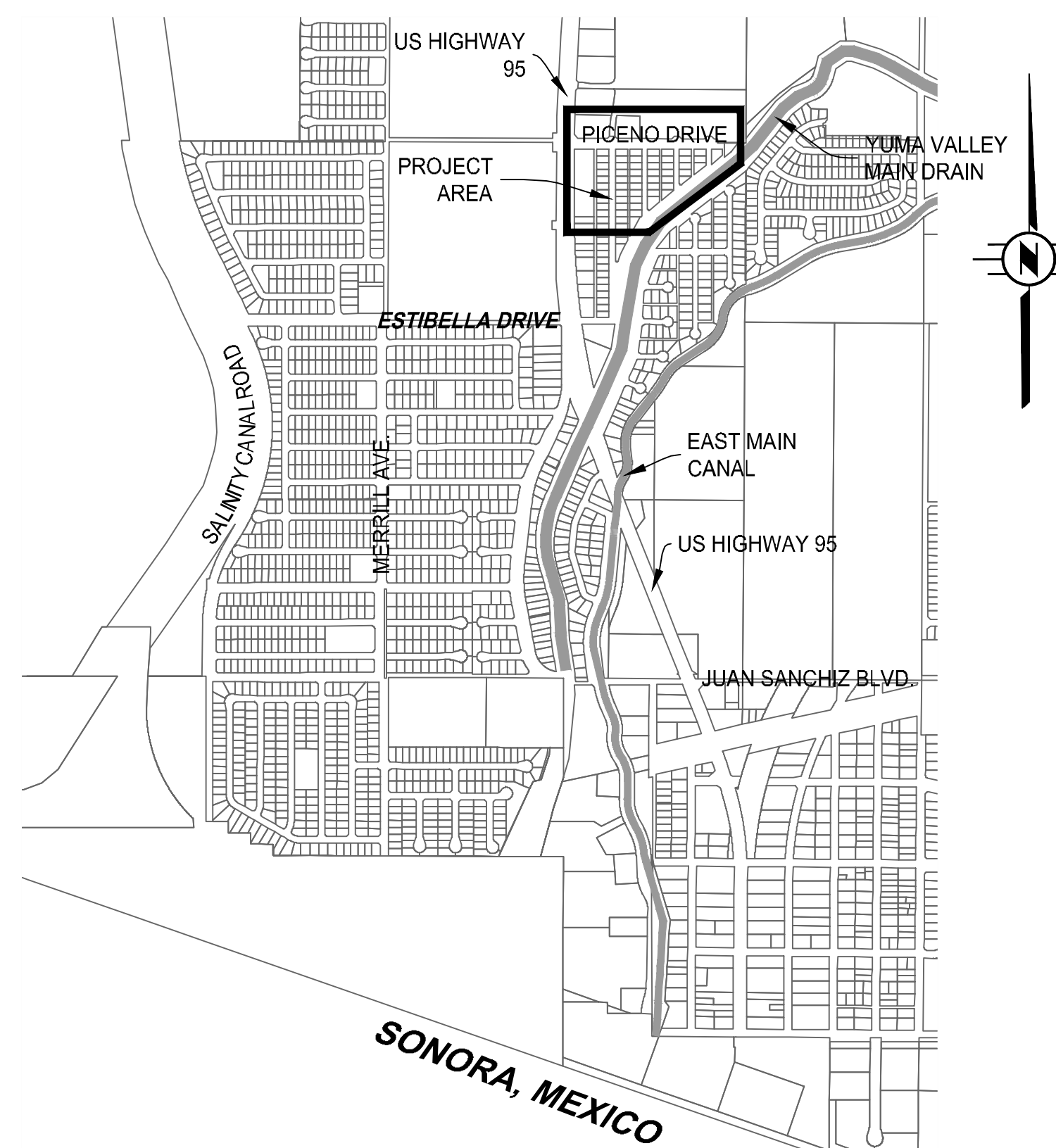
APPROVED: _____ Date: _____
Director of Public Works



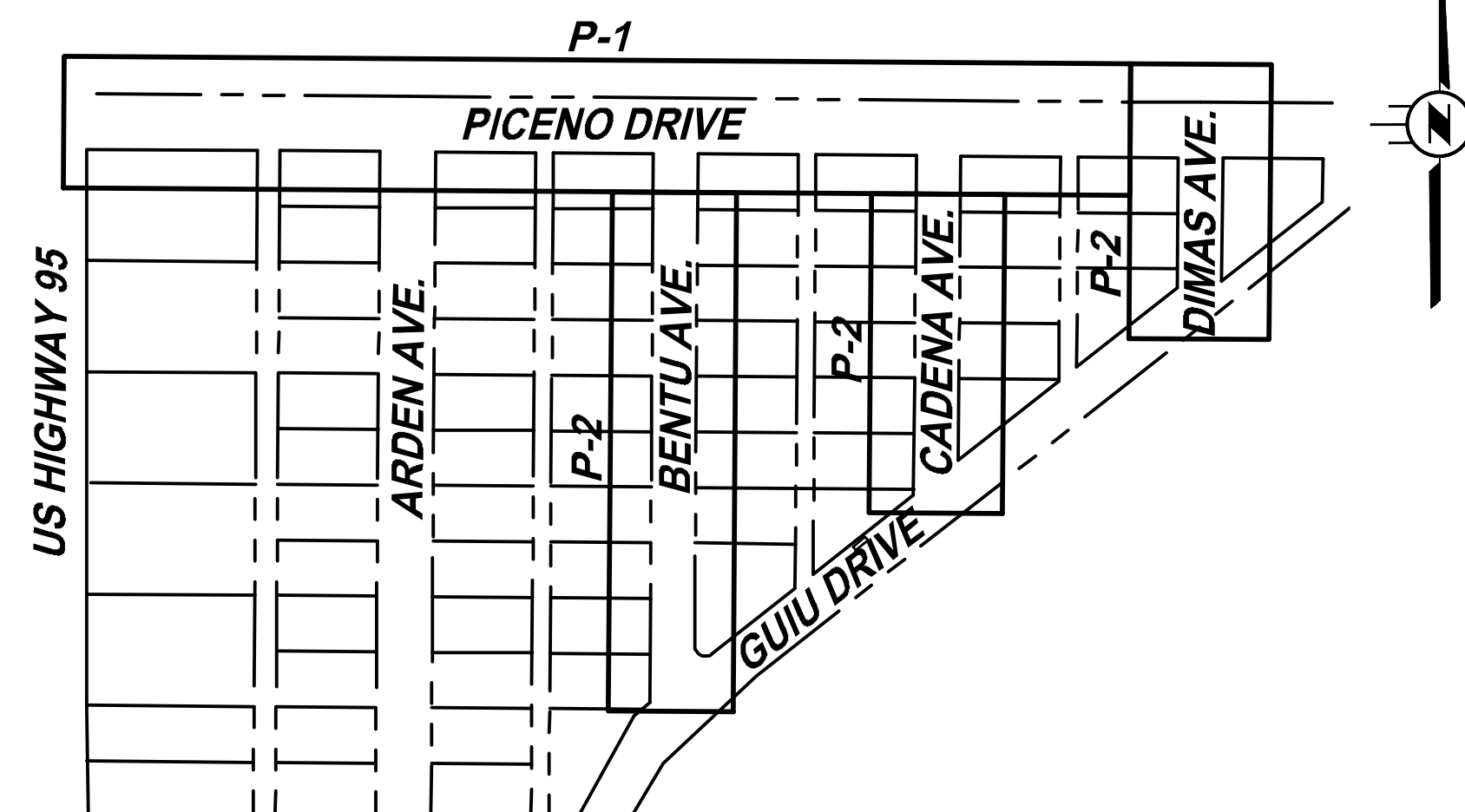
PREPARED BY:
JAMES DAVEY AND ASSOCIATES
1025 W. 24th STREET, SUITE 2
YUMA, AZ 85364
(928) 782-7926



LOCATION MAP
NTS



SAN LUIS VICINITY MAP
NTS



KEY MAP
NTS

SHEET INDEX

SHEET NUMBER:	TITLE:
T-1	COVER SHEET
G-1	GENERAL NOTES, & KEY MAP
G-2	LEGEND & ABBREVIATIONS
P-1	PLAN AND PROFILE - PICENO DRIVE - STA 37+31 TO STA 46+50
P-2	PLAN AND PROFILE - BENTU AVE. - STA 70+37 TO STA 74+50 CADENA AVE. - STA 80+59 TO STA 82+80 DIMAS AVE. - STA 70+75 TO STA 72+00
D-1	TYPICAL CROSS SECTION AND DETAILS

BENCHMARKS

BM #1
STA 70+00.00, 0' Rt
INTERSECTION OF GUIJU DRIVE AND BENTU AVENUE
FD TOWN OF SAN LUIS BRASS CAP
NORTHING = 548501.726
EASTING = 380976.383
ELEVATION = 87.29

BM #2
STA 80+00.00, 0' Rt
INTERSECTION OF GUIJU DRIVE AND CADENA AVENUE
FD TOWN OF SAN LUIS BRASS CAP
NORTHING = 548669.569
EASTING = 381213.624
ELEVATION = 87.52

BM #3
STA 70+54.17, 3.29' Rt
INTERSECTION OF GUIJU DRIVE AND DIMAS AVENUE
FD TOWN OF SAN LUIS BRASS CAP
NORTHING = 548856.150
EASTING = 381450.857
ELEVATION = 87.95

TEMPORARY BENCHMARKS

TBM #1
STA 47+13.17, 0' RT
INTERSECTION OF PICENO DRIVE AND DIMAS AVENUE
FD BRASS CAP STEM
NORTHING = 549007.737
EASTING = 381452.061
ELEVATION = 88.68

TBM #2
STA 42+41.03, 0' Rt
INTERSECTION OF PICENO DRIVE AND BENTU AVENUE
FD BRASS CAP STEM
NORTHING = 549011.555
EASTING = 380979.935
ELEVATION = 89.10

NOTE: SEE PLAN SHEETS P-1 AND P-2 FOR ADDITIONAL FOUND SURVEY MONUMENTS.

GENERAL NOTES

- UTILITY LOCATIONS ARE APPROXIMATE ONLY. CONTRACTOR SHALL VERIFY EXISTENCE, LOCATION AND DEPTH OF ALL UNDERGROUND UTILITIES PRIOR TO TRENCHING. CONTRACTOR SHALL PROTECT ALL UTILITIES IN PLACE UNLESS OTHERWISE SPECIFIED IN THE PLANS. CALL ARIZONA BLUESTAKE-1-800-STAKE-IT AT LEAST 48 HRS PRIOR TO EXCAVATION.
- NOT ALL STANDARD DRAWINGS ARE INCLUDED HEREIN. STANDARD DRAWINGS LISTED BUT NOT SHOWN ARE INCLUDED BY REFERENCE.

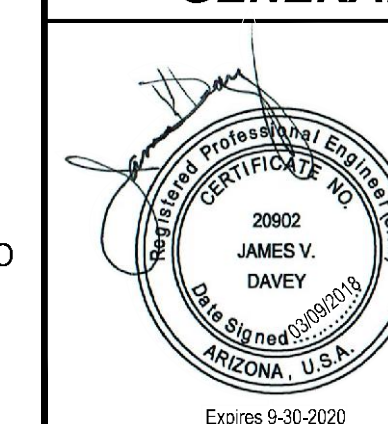


CSL-17

JAMES DAVEY AND ASSOCIATES
CONSULTING CIVIL ENGINEERS
1025 W. 24th Street, Suite 2 - YUMA, AZ 85364 - (928) 782-7926

CITY OF SAN LUIS
INTERNATIONAL PLAZA 1
ROADWAY IMPROVEMENTS

PROJECT LOCATION, VICINITY MAP
GENERAL NOTES, & KEY MAP



PREPARED FOR:
CITY OF SAN LUIS
COMMUNITY DEVELOPMENT
SAN LUIS, AZ 85349
(928) 341-8584

DESIGNED BY: T.S.

DRAWN BY: O.J.Z.

APPROVED BY: J.V.D.

SHEET G-1

MARCH 09, 2018

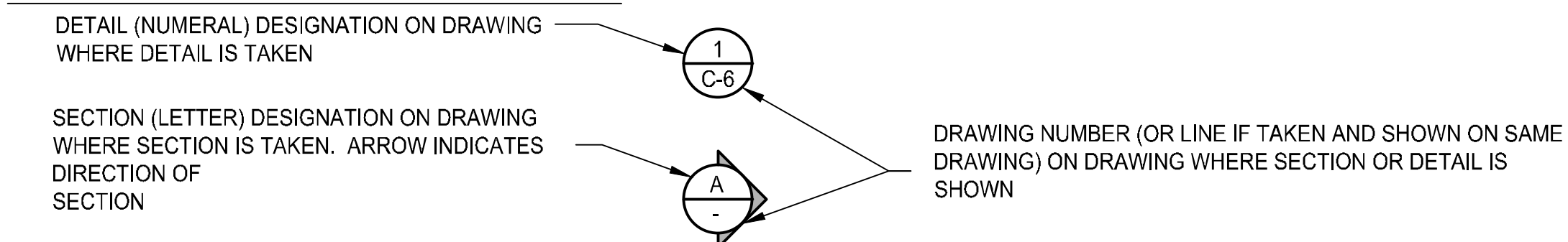
ABBREVIATIONS

<p>@ AB ABC ABDN ABUTMT AC</p> <p>ACI ACP ADDL ADJ ADOT AFF AG AGGR AISC ALUM ANG APPRX. APS ASTM ASSY AUTO AUX AVE AVG AWWA</p> <p>BC BEG BF BK BLDG BM BOTT BRG BTWN BV BVC BW</p> <p>C/L C, CONC CAP CATV CB CCP CD CF CFM CFS CI CJ CL CLR CMP CMU C.O. CO. CONN CONST CONT COORD COY CP CPLG CC. CTR CTRD CU CULV CV CWS</p> <p>DW D DBL DC DEG DEMO DG DIA DIAG DIM DIP DISCH DOI DN DR DW DWG DWS</p> <p>E EA EASE EB ECC EF EG, EX, GR EL, ELEC ELB ELEV</p>	<p>AT AGGREGATE BASE AGGREGATE BASE COURSE ABANDONED ABUTMENT ASPHALTIC CONCRETE, ALUMINUM CAP, ASBESTOS CEMENT AMERICAN CONCRETE INSTITUTE ASBESTOS CEMENT PIPE ADDITIONAL ADJACENT, ADJUSTABLE ARIZONA DEPARTMENT OF TRANSPORTATION AT FINISH FLOOR AGRICULTURAL AGGREGATE AMERICAN INSTITUTE OF STEEL CONSTRUCTION ALUMINUM ANGLE APPROXIMATE, APPROXIMATELY ARIZONA PUBLIC SERVICE AMERICAN SOCIETY OF TESTING MATERIALS ASSEMBLY AUTOMATIC AUXILIARY AVENUE AVERAGE AMERICAN WATER WORKS ASSOCIATION</p> <p>BRASS CAP/BACK CURB BEGIN, BEGINNING BLIND FLANGE, BOTTOM FACE BACK BUILDING BENCHMARK BOTTOM BEARING BETWEEN BALL VALVE, BUTTERFLY VALVE BEGINNING OF VERTICAL CURVE BARBED WIRE</p> <p>CHAINLINK CONCRETE, CENTER CAPACITY CABLE TELEVISION CATCH BASIN CONCRETE CYLINDER PIPE CROSS-DRAINAGE STRUCTURE CUBIC FEET CUBIC FEET PER MINUTE CUBIC FEET PER SECOND CAST IRON CONSTRUCTION JOINT CENTERLINE CLEAR, CLEARANCE CORRUGATED METAL PIPE CONCRETE MASONRY UNITS CLEANOUT COUNTY CONNECTION, CONNECT CONSTRUCTION, CONSTRUCT CONTINUOUS COORDINATE CITY OF YUMA CONTROL POINTS COUPLING CENTER TO CENTER CENTER CENTERED CUBIC CULVERT CHECK VALVE CALCULATED WATER SURFACE DRIVEWAY DEPTH DOUBLE DEPRESSED CURB DEGREE DEMOLITION DOWN GUY DIAMETER DIAGONAL DIMENSION DUCTILE IRON PIPE DISCHARGE U.S. DEPARTMENT OF THE INTERIOR DOWN DRIVE DRIVEWAY DRAWING DESIGN WATER SURFACE</p> <p>EAST, ELECTRIC EACH EASEMENT EASTBOUND ECCENTRIC EACH FACE EXISTING GRADE ELECTRIC, ELECTRICAL ELBOW ELEVATION</p>	<p>ENGR EP EQPMT EVC E/W EX., EXIST. EXP EXP JT</p> <p>FAB FC FCA FD F.D.C. FDN F.F. FG FH FIG. FL FLG FLR F.O. FOW FT FTG FWD</p> <p>G GA GAL GALV G. I. G.S. GB GC GND GPD GPH GPM GRTG GSP GSRBM GT, GTR GV</p> <p>HC HB HDPE HDWR HDWL HGL HGT HH HORIZ HP HWS HWY</p> <p>ID IE IF IN. INSTM INSUL INT INV. IRR</p> <p>JT</p> <p>L LAT LB LF LH LN LR LS LT L/G</p> <p>M MAINT MATL MAX MB MCC MECH MFR MH M&I MIN MISC MJ MO MON MTD MTG MTL MW MWS</p> <p>ENGINEER EDGE OF PAVEMENT EQUIPMENT END OF VERTICAL CURVE EACH WAY EXISTING EXPOSED EXPANSION JOINT</p> <p>FABRICATION FLEXIBLE COUPLING FLANGED COUPLING ADAPTER FOUND FIRE DEPARTMENT CONNECTION FOUNDATION FINISHED FLOOR ELEVATION FINISH GRADE FIRE HYDRANT FIGURE FLOW LINE FLEXIBLE FLANGE FLOOR FIBER OPTIC FACE OF WALL FOOT, FEET FOOTING, FILLING FORWARD</p> <p>GAS GAUGE GALLON GALVANIZED GALVANIZED IRON GALVANIZED STEEL GRADE BREAK GROOVED COUPLING GROUND GALLONS PER DAY GALLONS PER HOUR GALLONS PER MINUTE GRATING GALVANIZED STEEL PIPE GILA & SALT RIVER BASE & MERIDIAN GUTTER GATE VALVE, GAS VALVE</p> <p>HANDICAPPED HOSE BIB HIGH DENSITY POLYETHYLENE HARDWARE HEADWALL HYDRAULIC GRADE LINE HEIGHT HAND HOLE HORIZONTAL HORSEPOWER HIGH WATER SURFACE HIGHWAY</p> <p>INSIDE DIAMETER INVERT ELEVATION INSIDE FACE INCH INSTRUMENTATION INSULATE INTERIOR INVERT IRRIGATION</p> <p>JOINT</p> <p>LENGTH LATERAL POUND LINEAR FEET LEFT HAND LANE LONG RADIUS LAND SURVEYOR LIGHT, LEFT LIP OF GUTTER</p> <p>MEASURED MAINTENANCE, MAINTAIN MATERIAL MAXIMUM MAIL BOX MOTOR CONTROL CENTER MECHANICAL MANUFACTURER MANHOLE MUNICIPAL AND INDUSTRIAL MINIMUM MISCELLANEOUS MECHANICAL JOINT MONTH MONUMENT WALL MOUNTED MOUNTING METAL MONITORING WELL MAXIMUM WATER SURFACE</p>	<p>N/A N NAD NAVD NB NE NIC NO NOM NORM NPT NTS NW NWS</p> <p>O/H O&M OC OD OF OPNG OPP O TO O OVFL</p> <p>P&ID PC PCC</p> <p>PE PERM PI PJF PL POB POC POE POT PP PRC PREFAB PRESS. PRI PROP PS PSF PSI PSIG PT PV PVC PVMT PVT</p> <p>Q QUAD QTY</p> <p>ROW R RAD RB RC R.C.&G. RCP RD RED REF REHAB REINF REQD RESIL RGRCP RM RR RTN</p> <p>S SB SCHD SD SE SEC SF SH SIM SL, S SMH SP SPEC SPEC'D SPLY SQ SR SS SST, SS ST STA STD STL STRL</p> <p>NOT APPLICABLE NORTH NORTH AMERICAN DATUM NORTH AMERICAN VERTICAL DATUM NORTHBOUND NORTHEAST NOT IN CONTRACT NUMBER NOMINAL NORMAL NATIONAL PIPE THREAD NOT TO SCALE NORTHWEST NORMAL WATER SURFACE</p> <p>OPERATION & MAINTENANCE ON CENTER OUTSIDE DIAMETER OUTSIDE FACE, OVERFLOW OPENING OPPOSITE OUT TO OUT OVERFLOW</p> <p>PROCESS AND INSTRUMENTATION DIAGRAM POINT OF CURVATURE PORTLAND CEMENT CONC. POINT OF COMMAND CURVATURE POLYETHYLENE PERMANENT POINT OF INTERSECTION PREMOLDED JOINT FILLER PROPERTY LINE POINT OF BEGINNING POINT OF CURVATURE POINT OF ENDING POINT OF TANGENT POWER POLE POINT OF REVERSE CURVE PREFABRICATED PRESSURE PRIMARY PROPERTY PUMP STATION, PRESSURE SWITCH POUNDS PER SQUARE FOOT POUNDS PER SQUARE INCH POUNDS PER SQUARE INCH, GAUGE POINT, POINT OF TANGENCY PLUG VALVE, PRESSURE VALVE POLYVINYL CHLORIDE PAVEMENT POINT OF VERTICAL TANGENCY</p> <p>FLOW RATE (CFS) QUADRANT QUANTITY</p> <p>RIGHT OF WAY RECORD, RIGHT, RANGE RADIUS REBAR REINFORCED CONCRETE ROLL CURB AND GUTTER REINFORCED CONCRETE PIPE ROAD REDUCER REFER, REFERENCE REHABILITATED, REHABILITATION REINFORCE, REINFORCED, REINFORCING REQUIRED RESILIENT RUBBER GASKET REINFORCED CONCRETE PIPE ROOM RAILROAD RETURN</p> <p>SEWER, SOUTH SOIL BORING, SOUTHBOUND SCHEDULE STORM DRAIN SOUTHEAST SECTION SQUARE FEET SHEET SIMILAR SECTION LINE, SURVEY LINE, STREET LIGHT SEWER MANHOLE SPACE, SPACES SPECIFICATIONS SPECIFIED SUPPLY SQUARE STATE ROUTE SANITARY SEWER STAINLESS STEEL STREET STATION STANDARD STEEL STRUCTURAL</p> <p>STRUCTURE SUSPEND SOUTHWEST SYMMETRIC</p> <p>TANGENT, TOWNSHIP, TELEPHONE TOP AND BOTTOM THRUST BLOCK TEMPORARY BENCH MARK TOP OF CONCRETE, TOP OF CURB TEMPORARY CONSTRUCTION EASEMENT TOTAL DYNAMIC HEAD TECHNICAL TELEPHONE TEMPORARY TOP FACE THREAD THICK THREADED TELEPHONE MANHOLE TOP OF, TURNOUT TOP OF BANK TOP OF LINING TOP OF PIPE TOP OF RAISED LINING TELEPHONE POLE, TEST PIT, TURNING POINT TURNOUT POINT OF INTERSECTION TRANSITION TRAFFIC SIGNAL TRAFFIC SIGN, TOP OF SLOPE TOP OF WALL TYPICAL</p> <p>UNDERGROUND UNIFORM BUILDING CODE UNKNOWN UNLESS NOTED OTHERWISE UNITED STATES BUREAU OF RECLAMATION</p> <p>VERTICAL CURVE VERTICAL CURVE AND GUTTER VALLEY GUTTER VERTICAL VOLUME VERTICAL POINT OF INTERSECTION VENT THRU ROOF</p> <p>WITH WATER, WEST WESTBOUND WROUGHT IRON WATER METER WELLTON MOHAWK IRRIGATION AND DRAINAGE DISTRICT WATER STOP, WATER SURFACE WATER SURFACE ELEVATION WELDED STEEL PIPE WELDED WIRE FABRIC WATER VALVE</p> <p>ELECTRICAL TRANSFORMER</p> <p>YUMA COUNTY YUMA COUNTY WATER USERS' ASSOCIATION YARD YUMA IRRIGATION DISTRICT YUMA MESA CONDUIT YUMA MESA IRRIGATION AND DRAINAGE DISTRICT YEAR</p>
--	---	---	---

NOTES:

- 1) THIS IS A STANDARD ABBREVIATION AND LEGEND SHEET; THEREFORE, SOME SYMBOLS OR ABBREVIATIONS MAY APPEAR ON THIS SHEET AND NOT ON THE DRAWINGS.
- 2) CONTACT THE ENGINEER FOR ABBREVIATIONS NOT LISTED OR REFER TO 'ABBREVIATIONS FOR USE ON DRAWINGS AND TEXT' PUBLISHED BY THE AMERICAN NATIONAL STANDARDS INSTITUTE (ANSI).

SECTION AND DETAIL STANDARDS:



SCREENING:

SCREENED ELEMENTS ON AREA MAPPING REPRESENT EXISTING FACILITIES OR ELEVATIONS.

SCREENED BACKGROUNDS ON OTHER DRAWINGS CAN REPRESENT EXISTING FACILITIES OR FACILITIES TO BE CONSTRUCTED UNDER THIS CONTRACT, WHICH, IF DRAWN IN SOLID LINES, WOULD OBSCURE THE PARTICULAR DETAILS BEING SHOWN. CONSULT THE ENGINEER IF SCREENING OF ANY ELEMENTS IS NOT SELF-EXPLANATORY.

STANDARD DETAILS:

STANDARD DETAIL CALLOUTS ARE SHOWN TO INDICATE DETAIL REQUIRED AT SPECIFIC LOCATIONS. AT ALL LOCATIONS WHERE A STANDARD DETAIL CALLOUT IS NOT SHOWN, THE CONTRACTOR SHALL USE THE STANDARD DETAIL MOST APPLICABLE AND CONSISTENT WITH OTHER WORK UNDER THIS CONTRACT.

LEGEND

<p>NEW DRIVEWAY ENTRANCE WITH DEPRESSED CURB (D.C.)</p> <p>EXIST. DRIVEWAY ENTRANCE/HANDICAP RAMP</p> <p>EXIST./NEW STRUCTURE</p> <p>EXIST. ASPHALT PAVEMENT</p> <p>NEW ASPHALT PAVMT. AS NOTED</p> <p>EXIST. CONST. TO BE REMOVED</p> <p>NEW CONCRETE SIDEWALK OR SLAB (HATCH OPTIONAL)</p> <p>EXIST. CONCRETE SIDEWALK OR SLAB (HATCH OPTIONAL)</p> <p>NEW VERTICAL CURB & GUTTER (VC&G)</p> <p>EXIST. VERTICAL CURB & GUTTER (VC&G)</p> <p>NEW ROLL CURB & GUTTER (RC&G)</p> <p>EXIST. ROLL CURB & GUTTER (RC&G)</p> <p>NEW CONCRETE VALLEY GUTTER</p> <p>EXIST. CONCRETE VALLEY GUTTER</p> <p>GUTTER CATCH BASIN</p> <p>FLUSH CATCH BASIN</p> <p>EXIST./NEW PROPERTY LINE - R</p> <p>EXIST./NEW CENTER LINE - C</p> <p>EXIST./NEW RIGHT-OF-WAY LINE - R/W</p> <p>EXIST./NEW WOOD FENCE</p> <p>EXIST./NEW WIRE FENCE</p> <p>EXIST./NEW MASONRY FENCE</p> <p>EXIST./NEW CHAIN LINK FENCE</p> <p>EXIST./NEW WROUGHT IRON FENCE</p> <p>NEW DITCH AS NOTED</p> <p>EXIST. DITCH AS NOTED</p> <p>NEW IRRIGATION OR STORM DRAIN PIPE</p> <p>EXIST. IRRIGATION OR STORM DRAIN PIPE</p> <p>EXIST. STAND PIPE</p> <p>NEW STAND PIPE</p> <p>EXIST. IRRIGATION OR DRAINAGE JUNCTION BOX</p> <p>NEW IRRIGATION OR DRAINAGE JUNCTION BOX</p> <p>EXIST./NEW IRRIGATION/SPRINKLER VALVE</p> <p>EXIST. SANITARY SEWER PIPE</p> <p>NEW SANITARY SEWER PIPE</p> <p>EXIST. SANITARY CLEAN OUT</p> <p>NEW SANITARY CLEAN OUT</p> <p>EXIST. MANHOLE AS NOTED</p> <p>EXIST. MANHOLE TO BE BROUGHT TO GRADE</p> <p>NEW MANHOLE</p> <p>DRAINAGE DIVIDE</p> <p>EXIST. SLOPES</p> <p>NEW SLOPES</p> <p>EXIST. ELEVATION</p> <p>EXIST. GAS LINE</p> <p>NEW GAS LINE</p> <p>EXIST./NEW DOWN GUY</p>	<p>EXIST. POWER POLE</p> <p>NEW POWER POLE</p> <p>EXIST. TELEPHONE POLE</p> <p>NEW TELEPHONE POLE</p> <p>EXIST. TRAFFIC SIGNAL (T.S.)</p> <p>NEW TRAFFIC SIGNAL</p> <p>EXIST. LIGHT POLE (L.P.)</p> <p>NEW LIGHT POLE</p> <p>EXIST. WATER LINE</p> <p>NEW WATER LINE</p> <p>EXIST. END CAP W/ BLOW-OFF</p> <p>NEW END CAP W/ BLOW-OFF</p> <p>EXIST. FIRE HYDRANT (F.H.)</p> <p>NEW FIRE HYDRANT</p> <p>EXIST. FIRE DEPARTMENT CONNECTION (F.D.C.)</p> <p>NEW FIRE DEPARTMENT CONNECTION</p> <p>EXIST. VALVE</p> <p>EXIST. VALVE TO BE BROUGHT TO GRADE</p> <p>NEW VALVE & VALVE BOX</p> <p>EXIST. THRUST BLOCK</p> <p>NEW THRUST BLOCK</p> <p>NEW WATER METER BOX</p> <p>EXIST. WATER METER BOX (W.M.)</p> <p>EXIST. W.M. BOX TO BE RELOCATED</p> <p>EXIST. TRAFFIC SIGN</p> <p>EXIST. STREET SIGN</p> <p>EXIST. STREET LIGHT</p> <p>EXIST./NEW BARRICADE</p> <p>ROCK RIPRAP (AS NOTED)</p> <p>EXIST. TREE, PALM OR SHRUB</p> <p>EXIST. TREE, PALM OR SHRUB TO BE REMOVED</p> <p>EXIST. HEDGE (AS NOTED)</p> <p>EXIST. STORM DRAIN PIPE</p> <p>NEW STORM DRAIN PIPE</p> <p>EXIST. MAIL BOX</p> <p>EXIST. MAIL BOX TO BE RE-SET</p> <p>EXIST. SURVEY MONUMENT & COVER</p> <p>NEW SURVEY MONUMENT & COVER NO. 4-040 OR 4-050</p> <p>EXIST. SURVEY MONUMENT COVER TO BE BROUGHT TO GRADE</p> <p>NEW SURVEY MONUMENT, AS NOTED</p> <p>NEW SURVEY MONUMENT No. 4-080</p> <p>FOUND SURVEY MONUMENT</p> <p>SURVEY CONTROL POINT</p> <p>PROJECT BENCH MARK/TEMPORARY BENCHMARK</p> <p>NEW CONSTRUCTION NOTE</p> <p>REMOVAL NOTE</p>
---	---

JAMES DAVEY AND ASSOCIATES
CONSULTING CIVIL ENGINEERS
1025 W. 24th Street, Suite 2 - YUMA, AZ 85364 - (928) 782-7928

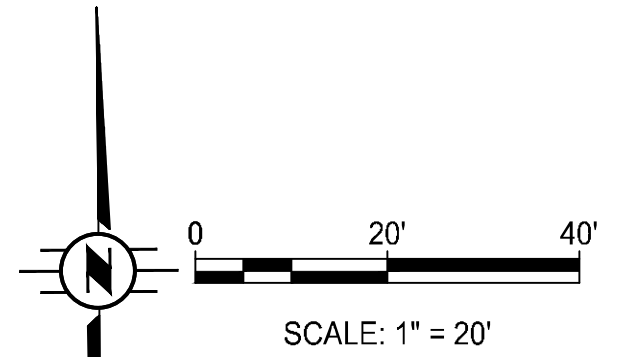
CITY OF SAN LUIS
INTERNATIONAL PLAZA 1
ROADWAY IMPROVEMENTS

LEGEND & ABBREVIATIONS

	<p>PREPARED FOR: CITY OF SAN LUIS COMMUNITY DEVELOPMENT SAN LUIS, AZ 85349 (928) 341-8584</p> <p>DESIGNED BY: T.S.</p> <p>DRAWN BY: O.J.Z.</p> <p>APPROVED BY: J.V.D.</p> <p style="text-align: center;">SHEET G-2</p> <p style="text-align: right;">MARCH 09, 2018</p>
--	---



CSL-17



REMOVAL NOTES		UM	QTY
1	REMOVE EXISTING ASPHALT (ANY THICKNESS)	SY	2078
2	REMOVE EXISTING CONCRETE CURB (ANY TYPE)	LF	98
3	REMOVE SIDEWALK, DRIVEWAY, AND SLAB (FLAT WORK)	SY	27

CONSTRUCTION NOTES		UM	QTY
1	PAVEMENT STRUCTURAL SECTION No. 1 (3" AC-3/4" MAG MIX / 8" ABC)	SY	1941
2	GRADING FOR PAVEMENT	SY	2078
4	ROLLED CURB AND GUTTER / 4" ABC (CITY OF YUMA STD. 3-140)	LF	98
7	CONCRETE SIDEWALK (T-6" / 4" ABC) (CITY OF YUMA STD 3-270)	SF	69
9	SIDEWALK RAMP (CITY OF YUMA STD. 3-280)	SF	230
19	ADJUST EX. SANITARY SEWER MANHOLE WITH NEW FRAME & COVER (CITY OF YUMA STD. 5-044)	EA	2
20	ADJUST EXISTING WATER VALVE WITH NEW FRAME & COVER (CITY OF YUMA STD. 5-210)	EA	10
23	SURVEY MONUMENT (CITY OF YUMA STD. 4-080)	EA	2
27	PAVEMENT STRUCTURAL SECTION No. 2 (3" AC-3/4" MAG MIX / EX. ABC)	SY	137

GENERAL NOTES	
14	SAWCUT AND MATCH EXISTING PAVEMENT.
14	STORM WATER PONDS ON THE EXISTING PAVEMENT / CURB. REPAIR AS NOTED.
14	PROTECT IN PLACE EXISTING CROSS CUTTER.
18	MATCH THE EXISTING CROSS CUTTER.
18	PROTECT IN PLACE EXISTING PAVEMENT.
19	REMOVE AND REPLACE THE ROLLED CURB FROM CURB RETURN TO CURB RETURN.
20	REMOVE EXISTING AC, REGRADE EXISTING SUBBASE, AND PLACE NEW 3" AC. NOTE: THE EXISTING AC THICKNESS VARIES 2" TO 3". REGRADE EXISTING SUBBASE TO ACCOMMODATE FOR NEW 3" THICK AC SECTION.
21	FULL PAVEMENT SECTION REMOVAL AND REPLACEMENT.
22	PAVEMENT REPLACEMENT SHALL HAVE A 2% MINIMUM CROSS SLOPE WITH A TYPICAL CENTER CROWN.



CSL-17

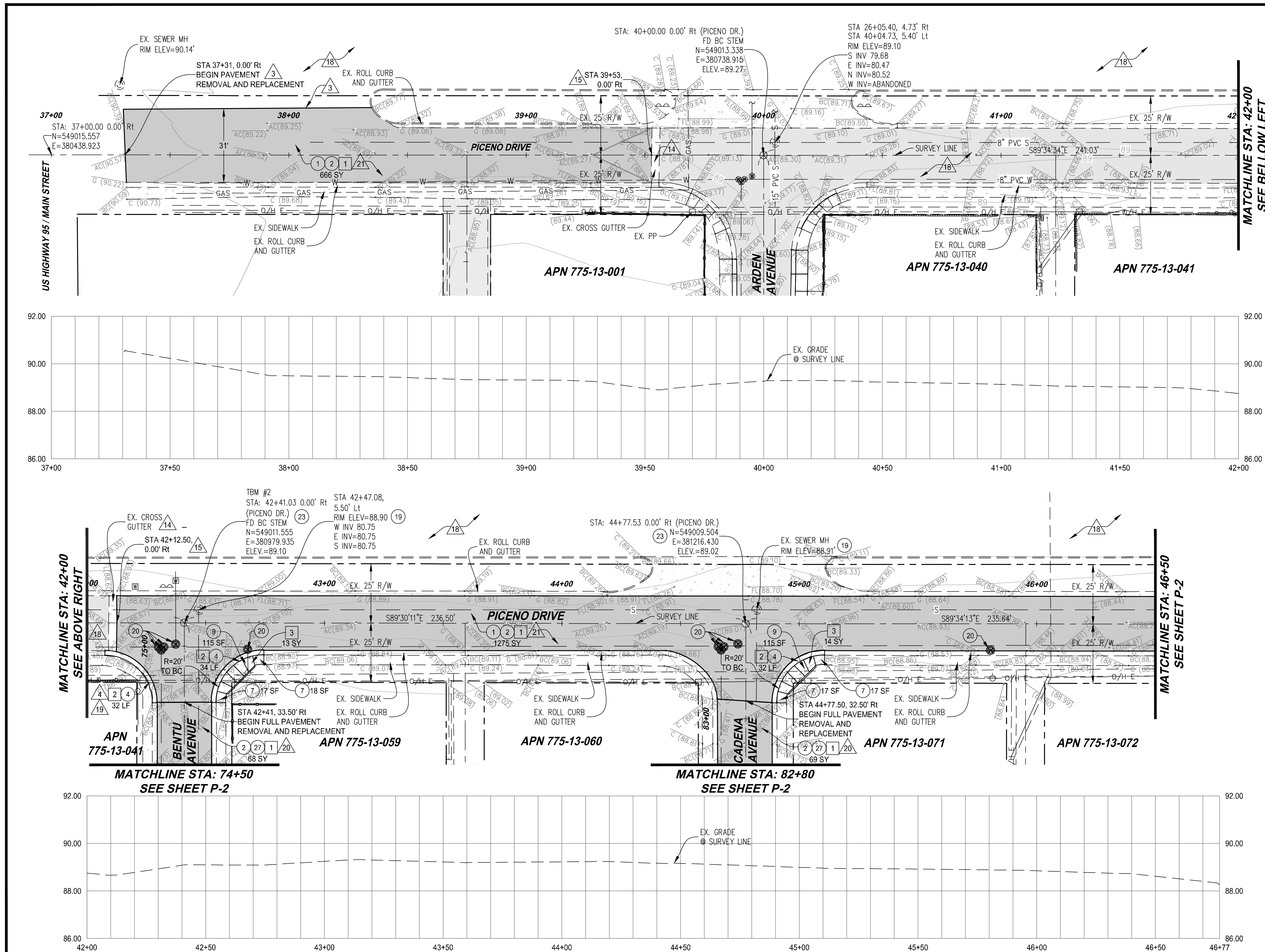
JAMES DAVEY AND ASSOCIATES
CONSULTING CIVIL ENGINEERS
 1025 W. 24th Street, Ste. #2 - YUMA, AZ 85364 - (928) 782-7926

CITY OF SAN LUIS
INTERNATIONAL PLAZA 1
ROADWAY IMPROVEMENTS

PLAN AND PROFILE
PICENO DRIVE - STA 37+31 TO STA 46+50

	PREPARED FOR: CITY OF SAN LUIS COMMUNITY DEVELOPMENT SAN LUIS, AZ 85349 (928) 341-8584
	DESIGNED BY: T.S.
	DRAWN BY: O.J.Z.
	APPROVED BY: J.V.D.
	SHEET P-1

MARCH 09, 2018



US HIGHWAY 95 / MAIN STREET

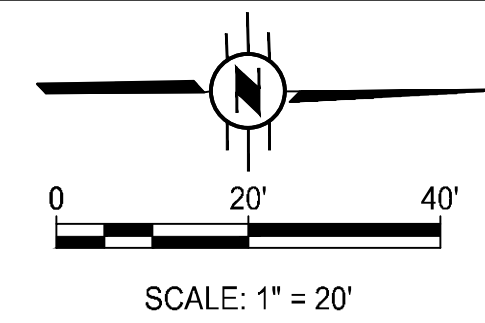
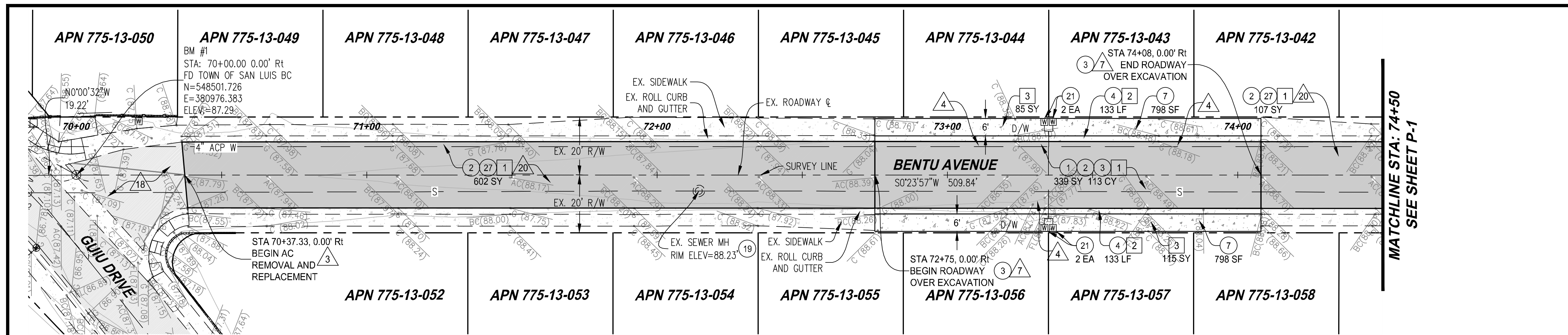
MATCHLINE STA: 42+00
SEE BELOW LEFT

MATCHLINE STA: 42+00
SEE ABOVE RIGHT

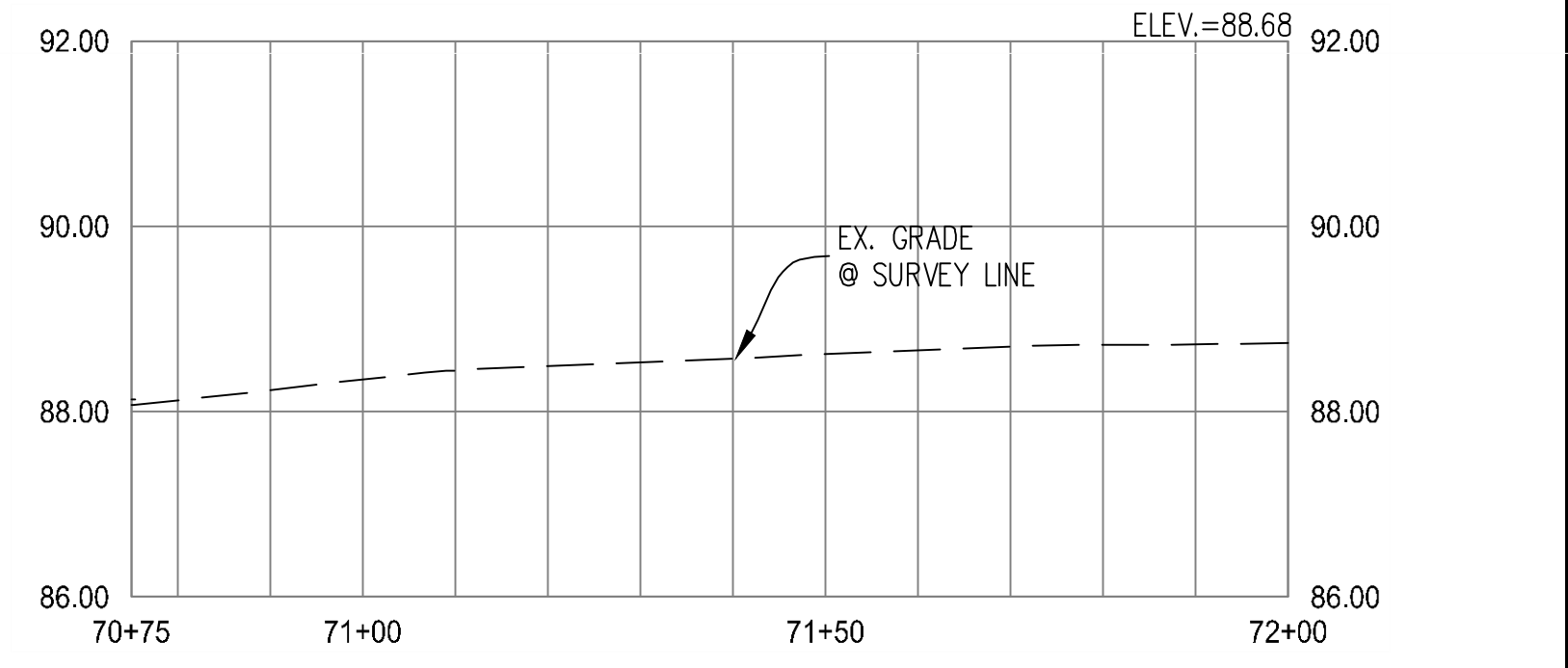
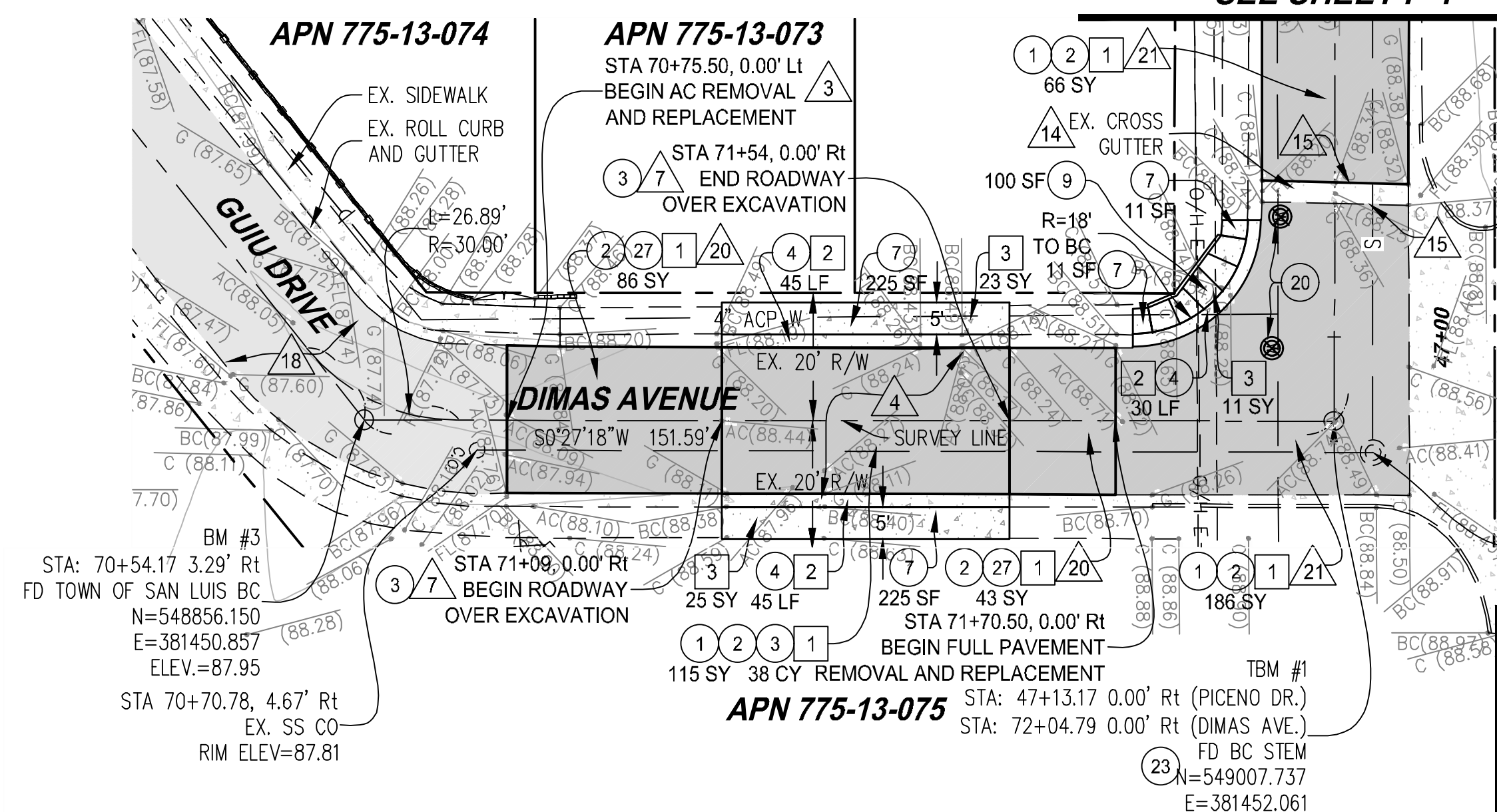
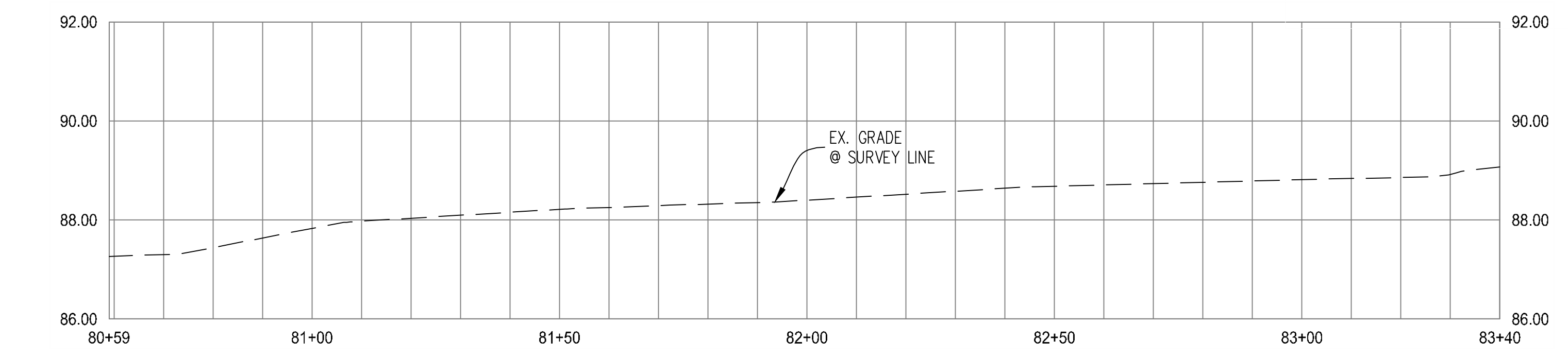
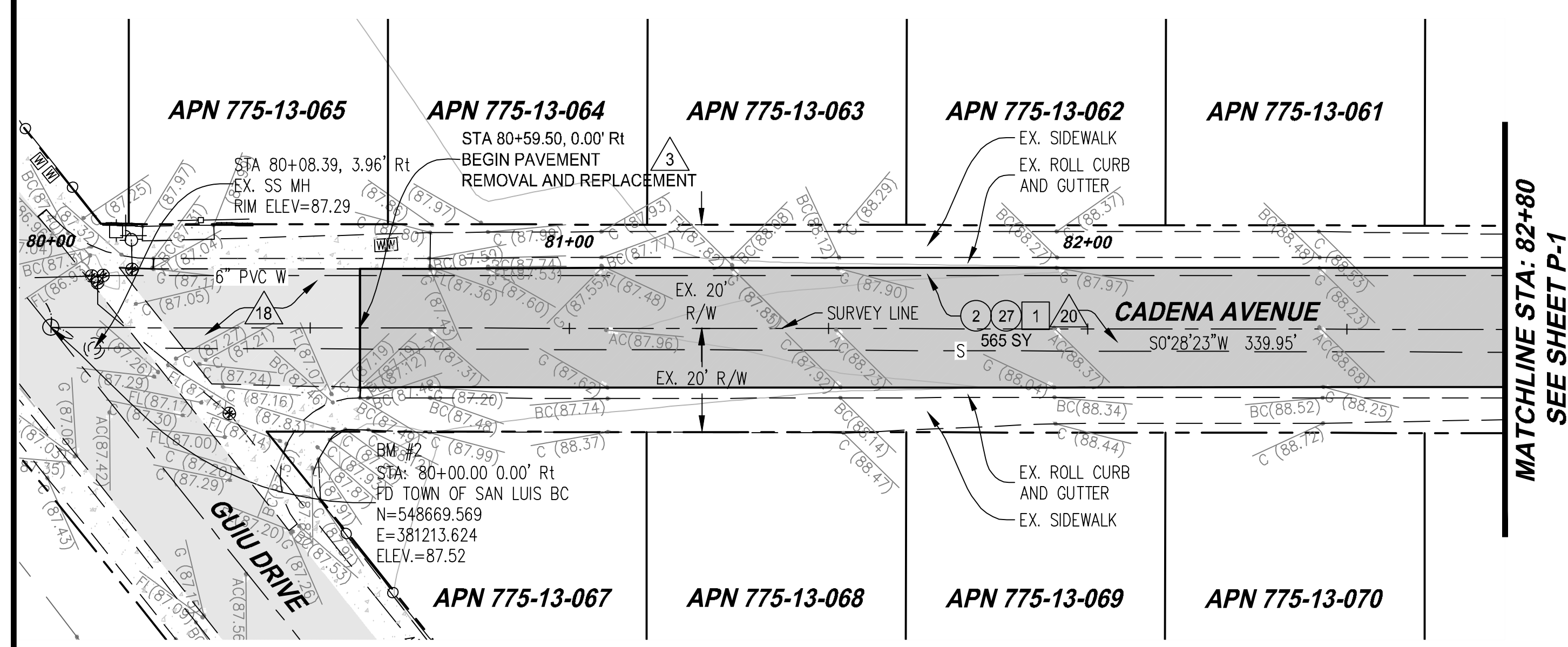
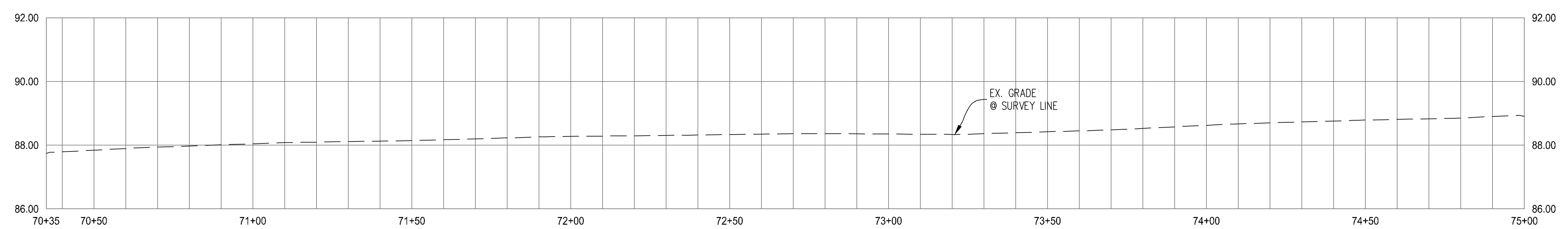
MATCHLINE STA: 74+50
SEE SHEET P-2

MATCHLINE STA: 82+80
SEE SHEET P-2

MATCHLINE STA: 46+50
SEE SHEET P-2



REMOVAL NOTES		U/M	QTY
1	REMOVE EXISTING ASPHALT (ANY THICKNESS)	SY	2152
2	REMOVE EXISTING CONCRETE CURB (ANY TYPE)	LF	386
3	REMOVE SIDEWALK, DRIVEWAY, AND SLAB (FLAT WORK)	SY	259
CONSTRUCTION NOTES		U/M	QTY
1	PAVEMENT STRUCTURAL SECTION No. 1 (3\"/>		



Call at least two full working days before you begin excavation.

ARIZONA 811
Arizona 811 Inc.

Dial 8-1-1 or 1-800-541-8111 (TDD-83348)
 In Maricopa County: (602) 953-9100

CSL-17

JAMES DAVEY AND ASSOCIATES
 CONSULTING CIVIL ENGINEERS
 1025 W. 24th Street, Ste. #2 - YUMA, AZ 85364 - (928) 782-7926

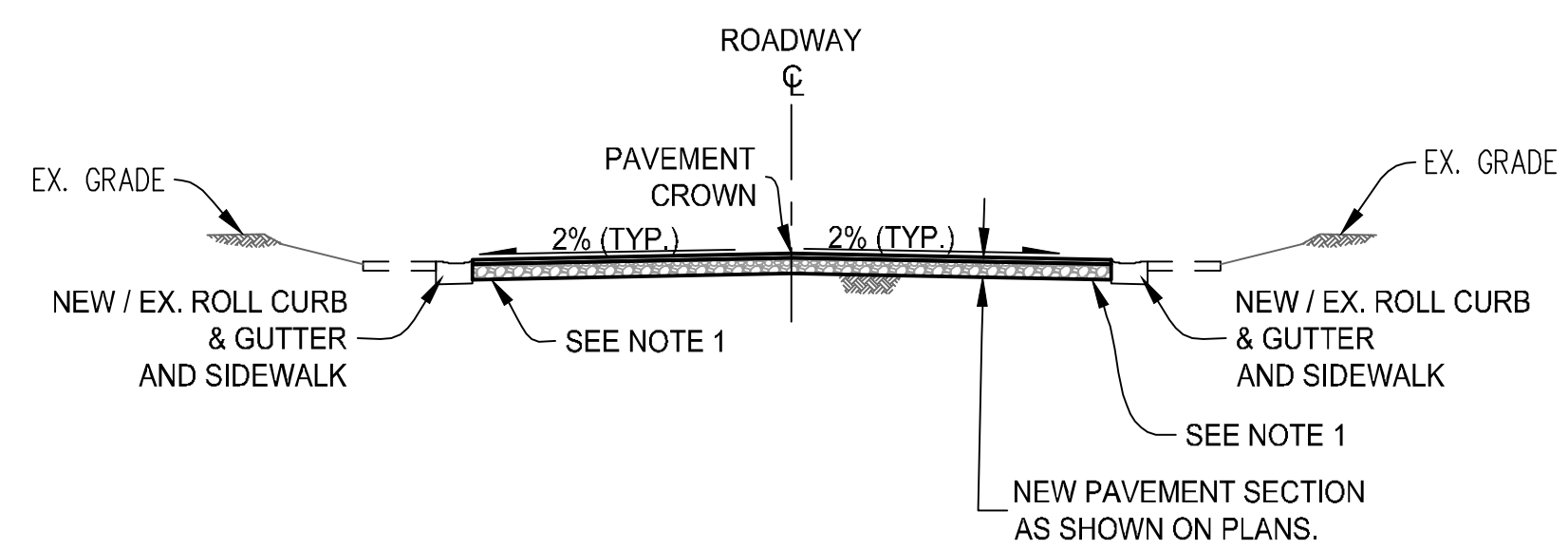
CITY OF SAN LUIS
 INTERNATIONAL PLAZA 1
 ROADWAY IMPROVEMENTS
 PLAN AND PROFILE
 BENTU AVE. - STA 70+37 TO STA 74+50
 CADENA AVE. - STA 80+59 TO STA 82+80
 DIMAS AVE. - STA 70+75 TO STA 72+00

PREPARED FOR:
 CITY OF SAN LUIS
 COMMUNITY DEVELOPMENT
 SAN LUIS, AZ 85349
 (928) 341-8584

DESIGNED BY: T.S.
 DRAWN BY: O.J.Z.
 APPROVED BY: J.V.D.

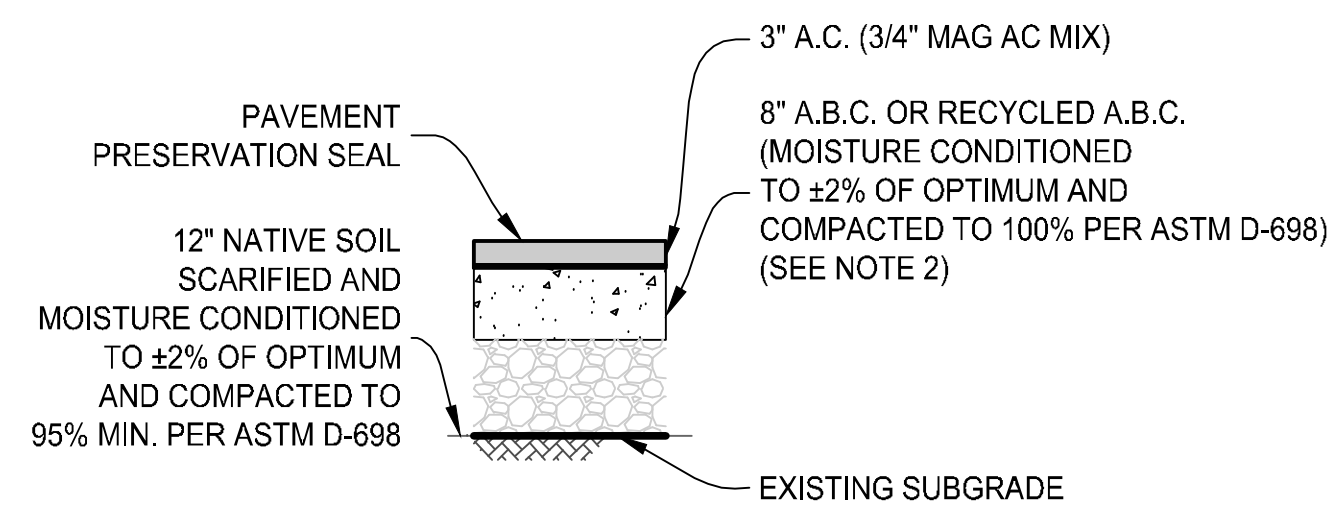
SHEET P-2
 MARCH 09, 2018

Expires 9-30-2020



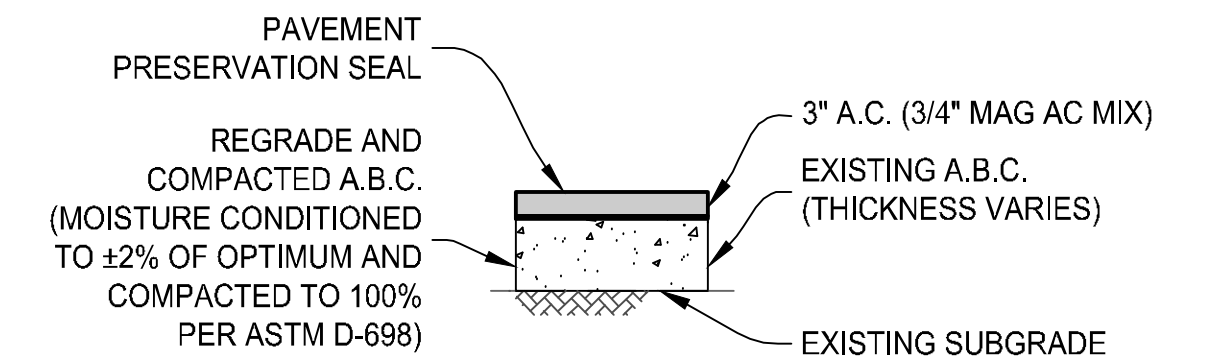
NOTE:
 1. BENTU AVENUE, CADENA AVENUE, AND DIMAS AVENUE:
 WHERE SHOWN ON PLANS THE EXISTING SUBBASE TO REMAIN
 IN PLACE, REGRADE / TAPER THE EXISTING SUBBASE TO
 ACCOMMODATE FOR THE NEW 3" AC PAVEMENT.

TYPICAL CROSS SECTION
 NTS



NOTES:
 1. SUBGRADE: SCARIFY THE TOP 12" OF NATIVE SOIL. IF UNSUITABLE SOIL MATERIAL IS ENCOUNTERED, IT SHALL BE REPLACED WITH SUITABLE SUBGRADE MATERIAL. PLACE GEOGRID 12" BELOW ABC WHERE ROADWAY OVER EXCAVATION IS SHOWN ON THE PLANS OR AS DIRECTED BY THE ENGINEER.
 2. RECYCLED A.B.C. WILL BE ACCEPTED IN LIEU OF NEW A.B.C. MEETS STANDARD 702-TABLE 702.

PAVEMENT STRUCTURAL SECTION No. 1 (3" AC-3/4" MAG MIX / 8" A.B.C)
 SCALE: NTS



NOTE:
 1. BENTU AVENUE, CADENA AVENUE, AND DIMAS AVENUE:
 WHERE SHOWN ON PLANS THE EXISTING SUBBASE TO REMAIN
 IN PLACE, REGRADE / TAPER THE EXISTING SUBBASE TO
 ACCOMMODATE FOR THE NEW 3" AC PAVEMENT.

PAVEMENT STRUCTURAL SECTION No. 2 (3" AC-3/4" MAG MIX / EX. A.B.C)
 SCALE: NTS



CSL-17

JAMES DAVEY AND ASSOCIATES CONSULTING CIVIL ENGINEERS 1025 W. 24th Street, Ste. #2 - YUMA, AZ 85364 - (928) 782-7926	
CITY OF SAN LUIS INTERNATIONAL PLAZA 1 ROADWAY IMPROVEMENTS	
TYPICAL CROSS SECTION AND DETAILS	
	PREPARED FOR: CITY OF SAN LUIS COMMUNITY DEVELOPMENT SAN LUIS, AZ 85349 (928) 341-8584
	DESIGNED BY: T.S.
	DRAWN BY: O.J.Z.
	APPROVED BY: J.V.D.
	SHEET D-1 MARCH 09, 2018