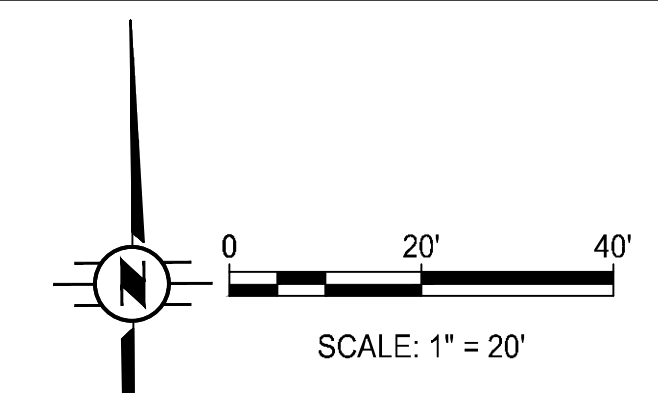
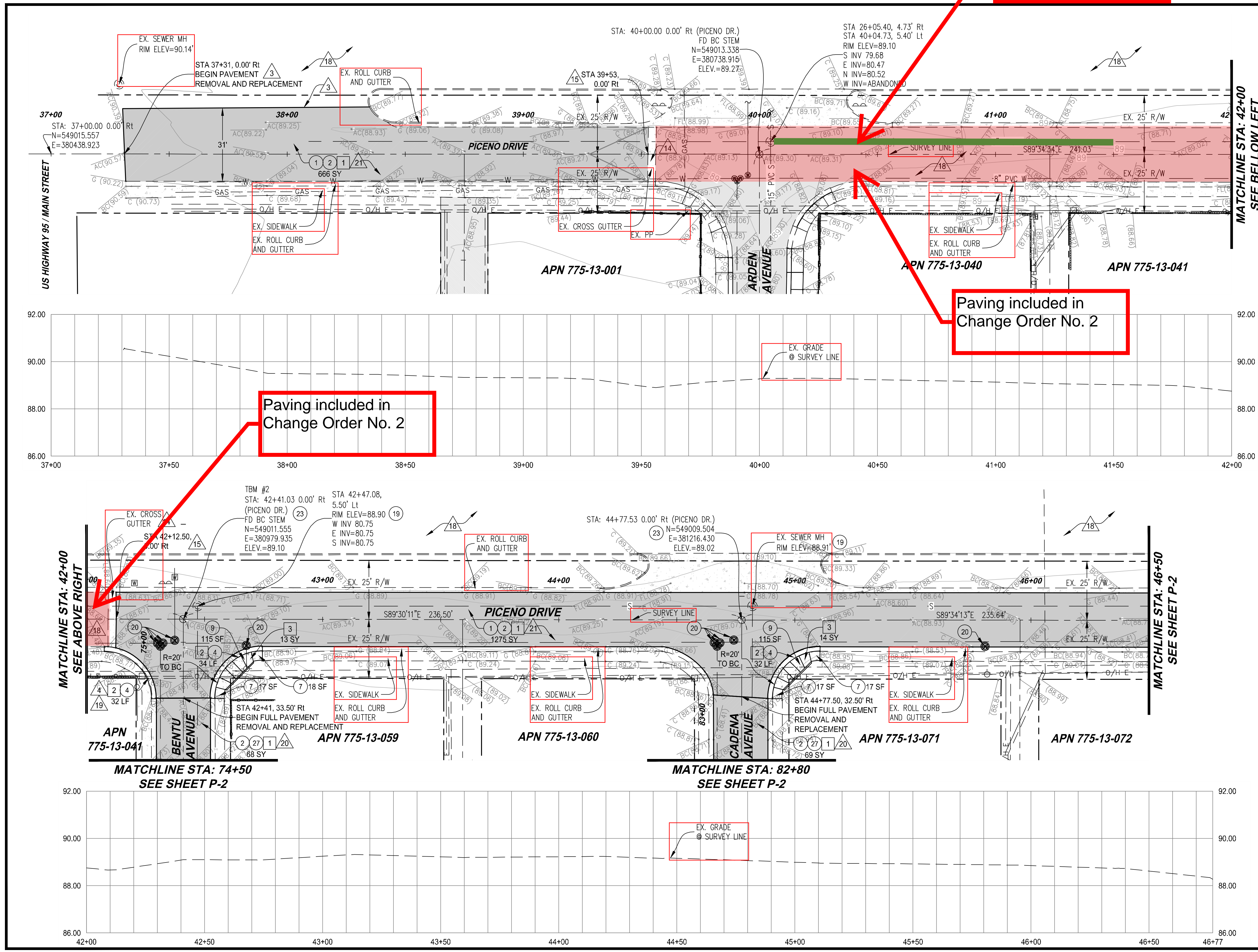


140 Lineal Feet of New 8" Sewer Line as part of Change Order No. 2

Paving included in Change Order No. 2

Paving included in Change Order No. 2



REMOVAL NOTES		UM	QTY
1	REMOVE EXISTING ASPHALT (ANY THICKNESS)	SY	2078
2	REMOVE EXISTING CONCRETE CURB (ANY TYPE)	LF	98
3	REMOVE SIDEWALK, DRIVEWAY, AND SLAB (FLAT WORK)	SY	27

CONSTRUCTION NOTES		UM	QTY
1	PAVEMENT STRUCTURAL SECTION No. 1 (3" AC-3/4" MAG MIX / 8" ABC)	SY	1941
2	GRADING FOR PAVEMENT	SY	2078
4	ROLLED CURB AND GUTTER / 4" ABC (CITY OF YUMA STD. 3-140)	LF	98
7	CONCRETE SIDEWALK (T-6" / 4" ABC) (CITY OF YUMA STD 3-270)	SF	69
9	SIDEWALK RAMP (CITY OF YUMA STD. 3-280)	SF	230
19	ADJUST EX. SANITARY SEWER MANHOLE WITH NEW FRAME & COVER (CITY OF YUMA STD. 5-044)	EA	2
20	ADJUST EXISTING WATER VALVE WITH NEW FRAME & COVER (CITY OF YUMA STD. 5-210)	EA	10
23	SURVEY MONUMENT (CITY OF YUMA STD. 4-080)	EA	2
27	PAVEMENT STRUCTURAL SECTION No. 2 (3" AC-3/4" MAG MIX / EX. ABC)	SY	137

GENERAL NOTES	
18	SAWCUT AND MATCH EXISTING PAVEMENT.
19	STORM WATER PONDS ON THE EXISTING PAVEMENT / CURB. REPAIR AS NOTED.
14	PROTECT IN PLACE EXISTING CROSS CUTTER.
15	MATCH THE EXISTING CROSS CUTTER.
18	PROTECT IN PLACE EXISTING PAVEMENT.
19	REMOVE AND REPLACE THE ROLLED CURB FROM CURB RETURN TO CURB RETURN.
20	REMOVE EXISTING AC, REGRADE EXISTING SUBBASE, AND PLACE NEW 3" AC. NOTE: THE EXISTING AC THICKNESS VARIES 2" TO 3". REGRADE EXISTING SUBBASE TO ACCOMMODATE FOR NEW 3" THICK AC SECTION.
21	FULL PAVEMENT SECTION REMOVAL AND REPLACEMENT.
22	PAVEMENT REPLACEMENT SHALL HAVE A 2% MINIMUM CROSS SLOPE WITH A TYPICAL CENTER CROWN.



JAMES DAVEY AND ASSOCIATES
CONSULTING CIVIL ENGINEERS
 1025 W. 24th Street, Ste. #2 - YUMA, AZ 85364 - (928) 782-7926

CITY OF SAN LUIS
INTERNATIONAL PLAZA 1
ROADWAY IMPROVEMENTS

PLAN AND PROFILE
PICENO DRIVE - STA 37+31 TO STA 46+50

PREPARED FOR:
 CITY OF SAN LUIS
 COMMUNITY DEVELOPMENT
 SAN LUIS, AZ 85349
 (928) 341-8584

DESIGNED BY: T.S.
 DRAWN BY: O.J.Z.
 APPROVED BY: J.V.D.

SHEET P-1
 MARCH 09, 2018