



AZ Contract #: ADSP017-166117
 San Luis Police Department
 10/1/2018
 Exterior Color: White
 Interior Color: Gray
 See attached sepcifications
 Current factory lead time 12-14 weeks

Chad Welsh
 9130 West Bell Road
 Peoria, Arizona 85382
Phone: 623-261-0570
 Fax: 480-393-5536
Email: cwelsh@peoriaford.com

Line Item:	Order Code	Description	Price
1	W1E	2019 F150 Crew Cab XL 4x4 5.0L V8	\$32,329.01
2	DIO	Tint to Specs	\$0.00
3	DIO	Spray-in bed liner	\$0.00
4	DIO	Leveling Kit	\$0.00
5	DIO	BakFLip Premium FRP Cover	\$0.00
6			
7			
8			
9			
10			
11			
12			
13			
14			
Taxable Total:			\$32,329.01
Sales Tax:			Sales Tax if applicable Peoria 8.1% \$2,618.65
Warranty Cost:			\$0.00
Tire Tax:			\$5.00
Freight			\$0.00
Total Per Unit:			\$34,952.66

Unit Quantity Requested: **1**
 Total Price for all units Delivered: **\$34,952.66**

Thank you for this opportunity to gain your business!
 To place order, review for accuracy and fax back with signature and P.O. number (if applicable).

Signature: _____
 Printed Name: _____

Date: _____
 P.O.#: _____



Peoria Ford
9130 W. Bell Rd., Peoria, Arizona, 853823700
Office: 623-977-8888
Fax: 623-877-8372

Customer Proposal

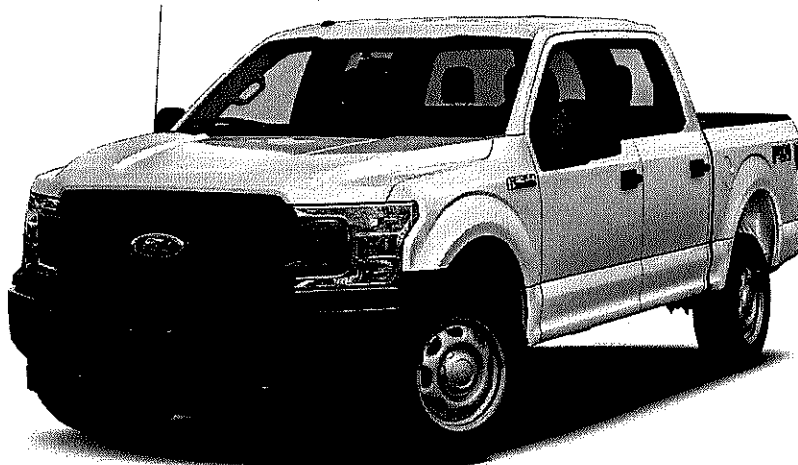
Prepared by:

Chad Welsh
Office: 623-977-8888

Date: 10/01/2018

Vehicle: 2019 F-150 XL
4x4 SuperCrew Cab Styleside 5.5' box 145"
WB

Quote ID: SanLuisW1E





Peoria Ford
9130 W. Bell Rd., Peoria, Arizona, 853823700
Office: 623-977-8888
Fax: 623-877-8372

2019 F-150, SuperCrew Cab Styleside
4x4 SuperCrew Cab Styleside 5.5' box 145"
WB XL(W1E)
Price Level: 920 Quote ID: SanLuisW1E

Table of Contents

Description	Page
Cover Page	1
Table of Contents	2
Selected Options	3
Selected Equip & Specs	5
Warranty - Selected	14



Peoria Ford
 9130 W. Bell Rd., Peoria, Arizona, 853823700
 Office: 623-977-8888
 Fax: 623-877-8372

2019 F-150, SuperCrew Cab Styleside
 4x4 SuperCrew Cab Styleside 5.5' box 145" WB
 XL(W1E)
 Price Level: 920 Quote ID: SanLuisW1E

Selected Options

Code	Description
Base Vehicle	
W1E	Base Vehicle Price (W1E)
Packages	
100A	Equipment Group 100A Base <i>Includes:</i> - Tires: P265/70R17 OWL A/T - Wheels: 17" Silver Steel - Cloth 40/20/40 Front Seat Includes 2-way manual driver/passenger adjustment and armrest. - Radio: AM/FM Stereo w/6 Speakers Includes auxiliary audio input jack (not available with SYNC).
Powertrain	
995	Engine: 5.0L V8 <i>Includes auto start-stop technology and flex-fuel capability,</i> <i>Includes:</i> - 3.31 Axle Ratio - GVWR: 7,000 lbs Payload Package
44G	Transmission: Electronic 10-Speed Automatic <i>Includes selectable drive modes: normal/tow-haul/snow-wet/EcoSelect/sport.</i>
X27	3.31 Axle Ratio
NONGV6	GVWR: 7,000 lbs Payload Package
Wheels & Tires	
STDTR	Tires: P265/70R17 OWL A/T
64C	Wheels: 17" Silver Steel
Seats & Seat Trim	
C	Cloth 40/20/40 Front Seat <i>Includes 2-way manual driver/passenger adjustment and armrest.</i>
Other Options	
145WB	145" Wheelbase
STDRD	Radio: AM/FM Stereo w/6 Speakers <i>Includes auxiliary audio input jack (not available with SYNC).</i>
53B	Class IV Trailer Hitch Receiver Ordering the Trailer Tow Package does not include Integrated Brake Controller (67T). Integrated Brake Controller (67T) is a standalone option and must be ordered separately. <i>Includes towing capability up to TBD on 3.3L V6 PFDI engine (99B) and 2.7L EcoBoost engine (99P) or up to TBD on 3.5L EcoBoost engine (994), 3.5L EcoBoost High Output engine (99G) and 5.0L V8 engine (995), smart trailer tow connector and 4-pin/7-pin wiring harness.</i>

Prices and content availability as shown are subject to change and should be treated as estimates only. Actual base vehicle, package and option pricing may vary from this estimate because of special local pricing, availability or pricing adjustments not reflected in the dealer's computer system. See salesperson for the most current information.



Peoria Ford
 9130 W. Bell Rd., Peoria, Arizona, 853823700
 Office: 623-977-8888
 Fax: 623-877-8372

2019 F-150, SuperCrew Cab Styleside
 4x4 SuperCrew Cab Styleside 5.5' box 145" WB
 XL(W1E)
 Price Level: 920 Quote ID: SanLuisW1E

Selected Options (cont'd)

Code	Description
18B	Black Platform Running Boards
PAINT	Monotone Paint Application
76R	Reverse Sensing System

Fleet Options

85A	<p>XL Power Equipment Group</p> <p>Requires valid FIN code.</p> <p><i>Includes:</i></p> <ul style="list-style-type: none"> - Power Glass Sideview Mirrors w/Black Skull Caps - Includes manual-folding. - Illuminated Entry - MyKey - Perimeter Alarm - Power Door Locks - Includes flip key and integrated key transmitter keyless-entry (includes Autolock). - Power Tailgate Lock - Power Front & Rear Windows
52P	<p>SYNC</p> <p>Requires valid FIN code.</p> <p><i>Includes enhanced voice recognition communications and entertainment system, 911 assist, 4.2" LCD display in center stack, Applink and 1 smart charging USB port.</i></p>
50S	<p>Cruise Control</p> <p>Requires valid FIN code.</p>
53A__	<p>Trailer Tow Package (Fleet)</p> <p>Ordering the Trailer Tow Package does not include Trailer Tow Mirrors. Trailer Tow Mirrors are a standalone option and must be ordered separately. (Option Code: 54Y/59S). Ordering the Trailer Tow Package does not include Integrated Brake Controller (67T). Integrated Brake Controller (67T) is a standalone option and must be ordered separately.</p> <p><i>Towing capability up to TBD. Includes tailgate LED.</i></p> <p><i>Includes:</i></p> <ul style="list-style-type: none"> - Class IV Trailer Hitch Receiver - Includes towing capability up to TBD on 3.3L V6 PFDI engine (99B) and 2.7L EcoBoost engine (99P) or up to TBD on 3.5L EcoBoost engine (994), 3.5L EcoBoost High Output engine (99G) and 5.0L V8 engine (995), smart trailer tow connector and 4-pin/7-pin wiring harness. - Auxiliary Transmission Oil Cooler - Upgraded Front Stabilizer Bar
413_	<p>Skid Plates (Fleet)</p> <p><i>Includes fuel tank, transfer case and front differential.</i></p>

Interior Colors

CG_01 Dark Earth Gray

Primary Colors

YZ_01 Oxford White

Prices and content availability as shown are subject to change and should be treated as estimates only. Actual base vehicle, package and option pricing may vary from this estimate because of special local pricing, availability or pricing adjustments not reflected in the dealer's computer system. See salesperson for the most current information.



Selected Equipment & Specs

Dimensions

- * Exterior length: 231.9"
- * Exterior height: 77.2"
- * Turning radius: 23.9'
- * Max ground clearance: 10.2"
- * Rear legroom: 43.6"
- * Rear headroom: 40.4"
- * Rear hiproom: 64.7"
- * Rear shoulder room: 65.9"
- * Approach angle: 25.5 deg
- * Maximum cargo volume: 51.9cu.ft.
- * Exterior width: 79.9"
- * Wheelbase: 145.0"
- * Min ground clearance: 9.3"
- * Front legroom: 43.9"
- * Front headroom: 40.8"
- * Front hiproom: 62.5"
- * Front shoulder room: 66.7"
- * Passenger volume: 131.8cu.ft.
- * Departure angle: 26 deg
- * Box length: 66.0"

Powertrain

- * 395hp 5.0L DOHC 32 valve V-8 engine with Ti-VCT variable valve control, variable intake length, port/direct injection
- * Recommended fuel : regular unleaded
- * 10 speed automatic transmission with overdrive
- * Fuel Economy City: 16 mpg
- * Capless fuel filler
- * Auto stop-start feature
- * LEV3-ULEV125
- * Part-time
- * Fuel Economy Highway: 22 mpg

Suspension/Handling

- * Front independent double wishbone suspension with HD anti-roll bar, gas-pressurized shocks
- * Speed-sensing electric power-assist rack-pinion Steering
- * P265/70SR17 OWL AT front and rear tires
- * Rear rigid axle leaf spring suspension with gas-pressurized shocks
- * Front and rear 17 x 7.5 silver steel wheels

Body Exterior

- * 4 doors
- * Conventional right rear passenger
- * Black door mirrors
- * Running boards
- * Bed-rail protectors
- * Easy lower tailgate
- * Box style: regular
- * Front and rear 17 x 7.5 wheels
- * Conventional left rear passenger
- * Driver and passenger power remote, manual folding door mirrors
- * Black bumpers
- * Class IV trailer hitch with trailer sway control
- * Easy lift tailgate
- * Trailer harness
- * Clearcoat paint
- * 2 front tow hook(s)

Convenience

- * Manual air conditioning
- * Power windows
- * Driver and passenger 1-touch down
- * Manual tilt steering wheel
- * Day-night rearview mirror
- * Wireless phone connectivity
- * 2 1st row LCD monitors
- * Passenger visor mirror
- * Rear door bins
- * Cruise control with steering wheel controls
- * Driver and passenger 1-touch up
- * Remote power door locks with 2 stage unlock and illuminated entry
- * Manual telescopic steering wheel
- * 911 Assist emergency SOS
- * AppLink smart device integration
- * Front and rear cupholders
- * Driver and passenger door bins

Seats and Trim

Prices and content availability as shown are subject to change and should be treated as estimates only. Actual base vehicle, package and option pricing may vary from this estimate because of special local pricing, availability or pricing adjustments not reflected in the dealer's computer system. See salesperson for the most current information.



Peoria Ford
 9130 W. Bell Rd., Peoria, Arizona, 853823700
 Office: 623-977-8888
 Fax: 623-877-8372

2019 F-150, SuperCrew Cab Styleside
 4x4 SuperCrew Cab Styleside 5.5' box 145" WB
 XL(W1E)
 Price Level: 920 Quote ID: SanLuisW1E

Selected Equipment & Specs (cont'd)

- * Seating capacity of 6
- * 4-way driver seat adjustment
- * Centre front armrest
- * Cloth seat upholstery
- * Front 40-20-40 split-bench seat
- * 4-way passenger seat adjustment
- * 60-40 folding rear split-bench seat

Entertainment Features

- * AM/FM stereo radio
- * Steering wheel mounted radio controls
- * Streaming audio
- * SYNC external memory control
- * 6 speakers
- * Fixed antenna

Lighting, Visibility and Instrumentation

- * Halogen aero-composite headlights
- * Fully automatic headlights
- * Light tinted windows
- * Voltmeter
- * Compass
- * Camera(s) - rear
- * Parking sensors
- * Delay-off headlights
- * Variable intermittent front windshield wipers
- * Tachometer
- * Oil pressure gauge
- * Outside temperature display
- * Low tire pressure warning
- * Trip odometer

Safety and Security

- * 4-wheel ABS brakes
- * Electric parking brake
- * Electronic stability control
- * Dual front impact airbag supplemental restraint system
- * Safety Canopy System curtain 1st and 2nd row overhead airbag supplemental restraint system
- * Remote activated perimeter/approach lighting
- * Security system with SecuriLock immobilizer
- * Manually adjustable front head restraints
- * Automatic Emergency Braking Feature
- * Brake assist with hill hold control
- * 4-wheel disc brakes
- * ABS and driveline traction control
- * Dual seat mounted side impact airbag supplemental restraint system
- * Airbag supplemental restraint system occupancy sensor
- * Power remote door locks with 2 stage unlock and panic alarm
- * MyKey restricted driving mode
- * 3 manually adjustable rear head restraints

Dimensions

General Weights

Curb	4867 lbs.	GVWR	7000 lbs.
Payload	2080 lbs.		

Front Weights

Front GAWR	3600 lbs.	Front curb weight	2918 lbs.
Front axle capacity	3750 lbs.	Front spring rating	3600 lbs.
Front tire/wheel capacity	3650 lbs.		

Rear Weights

Rear GAWR	3800 lbs.	Rear curb weight	1949 lbs.
Rear axle capacity	4800 lbs.	Rear spring rating	3800 lbs.
Rear tire/wheel capacity	4050 lbs.		

Trailer Type

Type	Regular	Harness	Yes
Class	IV	Hitch	Yes
Trailer sway control	Yes		

Prices and content availability as shown are subject to change and should be treated as estimates only. Actual base vehicle, package and option pricing may vary from this estimate because of special local pricing, availability or pricing adjustments not reflected in the dealer's computer system. See salesperson for the most current information.



Peoria Ford
 9130 W. Bell Rd., Peoria, Arizona, 853823700
 Office: 623-977-8888
 Fax: 623-877-8372

2019 F-150, SuperCrew Cab Styleside
 4x4 SuperCrew Cab Styleside 5.5' box 145" WB
 XL(W1E)
 Price Level: 920 Quote ID: SanLuisW1E

Selected Equipment & Specs (cont'd)

General Trailing

5th-wheel towing capacity	8900 lbs.	Gooseneck towing capacity	8900 lbs.
Towing capacity	9000 lbs.	GCWR	14300 lbs.

Fuel Tank type

Capacity	25.99 gal.	Capless fuel filler	Yes
----------	------------	---------------------	-----

Off Road

Approach angle	26 deg	Departure angle	26 deg
Ramp breakover angle	21 deg	Min ground clearance	9"
Max ground clearance	10"	Load floor height	35"

Exterior cargo

Length	66.0"	Minimum width	50.6"
Volume	52.8 cu.ft.	Pickup box depth	21.4"
Maximum width	65.2"	Tailgate width	60.3"

Interior cargo

Maximum cargo volume	51.9 cu.ft.
----------------------	-------------

Powertrain

Engine Type

Block material	Aluminum	Cylinders	V-8
Head material	Aluminum	Ignition	Spark
Injection	Port/direct injection	Liters	5.0L
Orientation	Longitudinal	Recommended fuel	Regular unleaded
Valves per cylinder	4	Valvetrain	DOHC
Variable valve control	Ti-VCT		

Engine Spec

Bore	3.63"	Compression ratio	12.0:1
Displacement	302 cu.in.	Stroke	3.65"

Engine Power

SAEJ1349 AUG2004 compliant	Yes	Output	395 HP @ 5,750 RPM
Torque	400 ft.-lb @ 4,500 RPM		

Alternator

Amps	200
------	-----

Battery

Amp hours	70	Cold cranking amps	610
Run down protection	Yes		

Engine Extras

Auto stop-start feature	Yes
-------------------------	-----

Transmission

Electronic control	Yes	Lock-up	Yes
Overdrive	Yes	Speed	10
Type	Automatic		

Transmission Gear Ratios

1st	4.696	2nd	2.985
3rd	2.146	4th	1.769

Prices and content availability as shown are subject to change and should be treated as estimates only. Actual base vehicle, package and option pricing may vary from this estimate because of special local pricing, availability or pricing adjustments not reflected in the dealer's computer system. See salesperson for the most current information.



Peoria Ford
 9130 W. Bell Rd., Peoria, Arizona, 853823700
 Office: 623-977-8888
 Fax: 623-877-8372

2019 F-150, SuperCrew Cab Styleside
 4x4 SuperCrew Cab Styleside 5.5' box 145" WB
 XL(W1E)
 Price Level: 920 Quote ID: SanLuisW1E

Selected Equipment & Specs (cont'd)

5th	1.52	6th	1.275
7th	1	8th	0.854
9th	0.689	10th	0.616
Reverse Gear ratios	4.866		
Transmission Extras			
Driver selectable mode	Yes	Sequential shift control	SelectShift
Oil cooler	Regular duty		
Drive Type			
4wd type	Part-time	Type	Four-wheel
Drive Feature			
Traction control	ABS and driveline	Locking hub control	Auto
Transfer case shift	Electronic		
Drive Axle			
Ratio	3.31		
Exhaust			
Material	Stainless steel	System type	Single
Emissions			
CARB	LEV3-ULEV125	EPA	Tier 2 Bin 4
fuel Economy			
City	16 mpg	Highway	22 mpg
Fuel type	Gasoline	Combined	18 mpg
Fuel Economy (Alternate 1)			
City	13 mpg	Highway	17 mpg
Fuel type	E85	Combined	15 mpg
Green Values			
Energy Impact Score (Barrels per year)	18.3	Carbon FP / Tailpipe and upstream total GHG (CO ₂ , tons per year)	9.8
Energy Impact Score (Barrels per year)	5.0		
Driveability			
Brakes			
ABS	4-wheel	ABS channels	4
Type	4-wheel disc	Vented discs	Front and rear
Electric parking brake	Yes		
Brake Assistance			
Brake assist	Yes	Hill hold control	Yes
Suspension Control			
Ride	Regular	Electronic stability control	Stability control with anti-roll
Front Suspension			
Independence	Independent	Type	Double wishbone
Anti-roll bar	HD		
Front Spring			

Prices and content availability as shown are subject to change and should be treated as estimates only. Actual base vehicle, package and option pricing may vary from this estimate because of special local pricing, availability or pricing adjustments not reflected in the dealer's computer system. See salesperson for the most current information.



Peoria Ford
 9130 W. Bell Rd., Peoria, Arizona, 853823700
 Office: 623-977-8888
 Fax: 623-877-8372

2019 F-150, SuperCrew Cab Styleside
 4x4 SuperCrew Cab Styleside 5.5' box 145" WB
 XL(W1E)
 Price Level: 920 Quote ID: SanLuisW1E

Selected Equipment & Specs (cont'd)

Type	Coil	Grade	Regular
<i>Front Shocks</i>			
Type	Gas-pressurized		
<i>Rear Suspension</i>			
Independence	Rigid axle	Type	Leaf
<i>Rear Spring</i>			
Type	Leaf	Grade	Regular
<i>Rear Shocks</i>			
Type	Gas-pressurized		
<i>Steering</i>			
Speed-sensing	Yes	Activation	Electric power-assist
Type	Rack-pinion		
<i>Steering Specs</i>			
# of wheels	2		
Exterior			
<i>Front Wheels</i>			
Diameter	17"	Width	7.50"
<i>Rear Wheels</i>			
Diameter	17"	Width	7.50"
<i>Spare Wheels</i>			
Wheel material	Steel		
<i>Front and Rear Wheels</i>			
Appearance	Silver	Material	Steel
Covers	Hub		
<i>Front Tires</i>			
Aspect	70	Diameter	17"
Sidewalls	OWL	Speed	S
Tread	AT	Type	P
Width	265mm		
<i>Rear Tires</i>			
Aspect	70	Diameter	17"
Sidewalls	OWL	Speed	S
Tread	AT	Type	P
Width	265mm		
<i>Spare Tire</i>			
Mount	Underbody w/crankdown	Type	Full-size
<i>Wheels</i>			
Turning radius	23.9'	Wheelbase	145.0"
<i>Body Features</i>			
Running boards	Yes	Skid plate(s)	3
Body material	Aluminum	Side impact beams	Yes

Prices and content availability as shown are subject to change and should be treated as estimates only. Actual base vehicle, package and option pricing may vary from this estimate because of special local pricing, availability or pricing adjustments not reflected in the dealer's computer system. See salesperson for the most current information.



Peoria Ford
 9130 W. Bell Rd., Peoria, Arizona, 853823700
 Office: 623-977-8888
 Fax: 623-877-8372

2019 F-150, SuperCrew Cab Styleside
 4x4 SuperCrew Cab Styleside 5.5' box 145" WB
 XL(W1E)
 Price Level: 920 Quote ID: SanLuisW1E

Selected Equipment & Specs (cont'd)

Active grille shutters	Yes	Front tow hook(s)	2
Body Doors			
Door count	4	Left rear passenger	Conventional
Right rear passenger	Conventional	Rear cargo	Tailgate
Pickup			
Box style	Regular	Bed-rail protectors	Yes
Easy lift tailgate	Yes	Easy lower tailgate	Yes
Exterior Dimensions			
Length	231.9"	Body width	79.9"
Body height	77.2"	Frame section modulus	5.0cu.in.
Frame yield strength (psi)	49300.0	Front bumper to Front axle	37.8"
Safety			
Airbags			
Driver front-impact	Yes	Driver side-impact	Seat mounted
Occupancy sensor	Yes	Overhead Safety Canopy System curtain 1st and 2nd row	
Passenger front-impact	Yes	Passenger side-impact	Seat mounted
Seatbelt			
Rear centre 3 point	Yes	Height adjustable	Front
Pre-tensioners	Front	Pre-tensioners (#)	2
Security			
Immobilizer	SecuriLock	Panic alarm	Yes
Restricted driving mode	MyKey		
Seating			
Passenger Capacity			
Capacity	6		
Front Seats			
Split	40-20-40	Type	Split-bench
Driver Seat			
Fore/aft	Manual	Reclining	Manual
Way direction control	4		
Passenger seat			
Fore/aft	Manual	Reclining	Manual
Way direction control	4		
Front Head Restraint			
Control	Manual	Type	Adjustable
Front Armrest			
Centre	Yes		
Rear Seats			
Descriptor	Split-bench	Facing	Front
Folding	60-40	Folding position	Fold-up cushion
Type	Fixed		

Prices and content availability as shown are subject to change and should be treated as estimates only. Actual base vehicle, package and option pricing may vary from this estimate because of special local pricing, availability or pricing adjustments not reflected in the dealer's computer system. See salesperson for the most current information.



Peoria Ford
 9130 W. Bell Rd., Peoria, Arizona, 853823700
 Office: 623-977-8888
 Fax: 623-877-8372

2019 F-150, SuperCrew Cab Styleside
 4x4 SuperCrew Cab Styleside 5.5' box 145" WB
 XL(W1E)
 Price Level: 920 Quote ID: SanLuisW1E

Selected Equipment & Specs (cont'd)

<i>Rear Head Restraints</i>			
Control	Manual	Type	Adjustable
Number	3		
<i>Front Seat Trim</i>			
Material	Cloth	Back material	Cloth
<i>Rear Seat Trim Group</i>			
Material	Cloth	Back material	Carpet
Convenience			
<i>AC And Heat Type</i>			
Air conditioning	Manual	Underseat ducts	Yes
<i>Audio System</i>			
Radio	AM/FM stereo	Radio grade	Regular
Seek-scan	Yes	External memory control	SYNC
<i>Audio Speakers</i>			
Speaker type	Regular	Speakers	6
<i>Audio Controls</i>			
Steering wheel controls	Yes	Voice activation	Yes
Streaming audio	Bluetooth yes		
<i>Audio Antenna</i>			
Type	Fixed		
<i>LCD Monitors</i>			
1st row	2	Primary monitor size (inches)	4.2
<i>Cruise Control</i>			
Cruise control	With steering wheel controls		
<i>Convenience Features</i>			
Retained accessory power	Yes	12V DC power outlet	3
Emergency SOS	911 Assist	Wireless phone connectivity	Bluetooth
Smart device integration	App link		
<i>Door Lock Activation</i>			
Type	Power with 2 stage unlock	Remote	Keyfob (all doors)
Integrated key/remote	Yes	Auto locking	Yes
<i>Door Lock Type</i>			
Rear child safety	Manual	Tailgate/rear door lock	Included with power door locks
<i>Instrumentation Type</i>			
Display	Analog		
<i>Instrumentation Gauges</i>			
Tachometer	Yes	Oil pressure	Yes
Engine temperature	Yes	Voltmeter	Yes
Transmission fluid temp	Yes		
<i>Instrumentation Warnings</i>			

Prices and content availability as shown are subject to change and should be treated as estimates only. Actual base vehicle, package and option pricing may vary from this estimate because of special local pricing, availability or pricing adjustments not reflected in the dealer's computer system. See salesperson for the most current information.



Peoria Ford
 9130 W. Bell Rd., Peoria, Arizona, 853823700
 Office: 623-977-8888
 Fax: 623-877-8372

2019 F-150, SuperCrew Cab Styleside
 4x4 SuperCrew Cab Styleside 5.5' box 145" WB
 XL(W1E)
 Price Level: 920 Quote ID: SanLuisW1E

Selected Equipment & Specs (cont'd)

Oil pressure	Yes	Engine temperature	Yes
Battery	Yes	Lights on	Yes
Key	Yes	Low fuel	Yes
Door ajar	Yes	Service interval	Yes
Brake fluid	Yes	Low tire pressure	Tire specific

Instrumentation Displays

Clock	In-radio display	Compass	Yes
Exterior temp	Yes	Camera(s) - rear	Yes

Instrumentation Feature

Trip odometer	Yes	Parking sensors	Rear
Forward collision	Mitigation		

Steering Wheel Type

Material	Urethane	Tilting	Manual
Telescoping	Manual		

Front Side Windows

Window 1st row activation	Power
---------------------------------	-------

Windows Rear Side

2nd row activation	Power
--------------------------	-------

Window Features

1-touch down	Driver and passenger	1-touch up	Driver and passenger
Tinted	Light		

Front Windshield

Wiper	Variable intermittent
-------------	-----------------------

Rear Windshield

Window	Fixed
--------------	-------

Interior

Passenger Visor

Mirror	Yes
--------------	-----

Rear View Mirror

Day-night	Yes
-----------------	-----

Headliner

Coverage	Full	Material	Cloth
----------------	------	----------------	-------

Floor Trim

Coverage	Full	Covering	Vinyl/rubber
----------------	------	----------------	--------------

Trim Feature

Gear shift knob	Urethane	Cabback insulator	Yes
Interior accents	Chrome		

Lighting

Dome light type	Fade	Illuminated entry	Yes
Variable IP lighting	Yes		

Storage

Prices and content availability as shown are subject to change and should be treated as estimates only. Actual base vehicle, package and option pricing may vary from this estimate because of special local pricing, availability or pricing adjustments not reflected in the dealer's computer system. See salesperson for the most current information.



Peoria Ford
 9130 W. Bell Rd., Peoria, Arizona, 853823700
 Office: 623-977-8888
 Fax: 623-877-8372

2019 F-150, SuperCrew Cab Styleside
 4x4 SuperCrew Cab Styleside 5.5' box 145" WB
 XL(W1E)
 Price Level: 920 Quote ID: SanLuisW1E

Selected Equipment & Specs (cont'd)

Driver door bin	Yes	Front Beverage holder(s)	Yes
Glove box	Yes	Passenger door bin	Yes
Rear yes	Yes	Instrument panel	Bin
Dashboard	Yes	Rear door bins	Yes
<i>Legroom</i>			
Front	43.9"	Rear	43.6"
<i>Headroom</i>			
Front	40.8"	Rear	40.4"
<i>Hip Room</i>			
Front	62.5"	Rear	64.7"
<i>Shoulder Room</i>			
Front	66.7"	Rear	65.9"
<i>Interior Volume</i>			
Passenger volume	131.8 cu.ft.		

Prices and content availability as shown are subject to change and should be treated as estimates only. Actual base vehicle, package and option pricing may vary from this estimate because of special local pricing, availability or pricing adjustments not reflected in the dealer's computer system. See salesperson for the most current information.



Peoria Ford
 9130 W. Bell Rd., Peoria, Arizona, 853823700
 Office: 623-977-8888
 Fax: 623-877-8372

2019 F-150, SuperCrew Cab Styleside
 4x4 SuperCrew Cab Styleside 5.5' box 145" WB
 XL(W1E)
 Price Level: 920 Quote ID: SanLuisW1E

Warranty - Selected Equipment & Specs

Warranty

Basic

Distance 36000 miles Months 36 months

Powertrain

Distance 60000 miles Months 60 months

Corrosion Perforation

Distance Unlimited miles Months 60 months

Roadside Assistance

Distance 60000 miles Months 60 months

Prices and content availability as shown are subject to change and should be treated as estimates only. Actual base vehicle, package and option pricing may vary from this estimate because of special local pricing, availability or pricing adjustments not reflected in the dealer's computer system. See salesperson for the most current information.