



AZ Contract #: ADSP017-166117
 San Luis Police Department
 10/1/2018
 Exterior Color: White
 Interior Color: Gray
 See attached sepcifications
 Current factory lead time 12-14 weeks

Chad Welsh
 9130 West Bell Road
 Peoria, Arizona 85382
Phone: 623-261-0570
 Fax: 480-393-5536
Email: cwelsh@peoriaford.com

Line Item:	Order Code	Description	Price
1	X2B	2019 F250 Super Cab XL 4x4 Bed Delete 6.2L V8 Gas	\$28,934.37
2	DIO	Custom Fiberglass Coaches Model C-100 aminal control unit	\$25,018.00
3			
4			
5			
6			
7			
8			
9			
10			
11			
12			
13			
14			
Taxable Total:			\$53,952.37
Sales Tax:			Sales Tax if applicable Peoria 8.1% \$4,370.14
Warranty Cost:			\$0.00
Tire Tax:			\$5.00
Freight			\$0.00
Total Per Unit:			\$58,327.51

Unit Quantity Requested: **1**
 Total Price for all units Delivered: **\$58,327.51**

Thank you for this opportunity to gain your business!
 To place order, review for accuracy and fax back with signature and P.O. number (if applicable).

Signature: _____
 Printed Name: _____

Date: _____
 P.O.#: _____



Peoria Ford
9130 W. Bell Rd., Peoria, Arizona, 853823700
Office: 623-977-8888
Fax: 623-877-8372

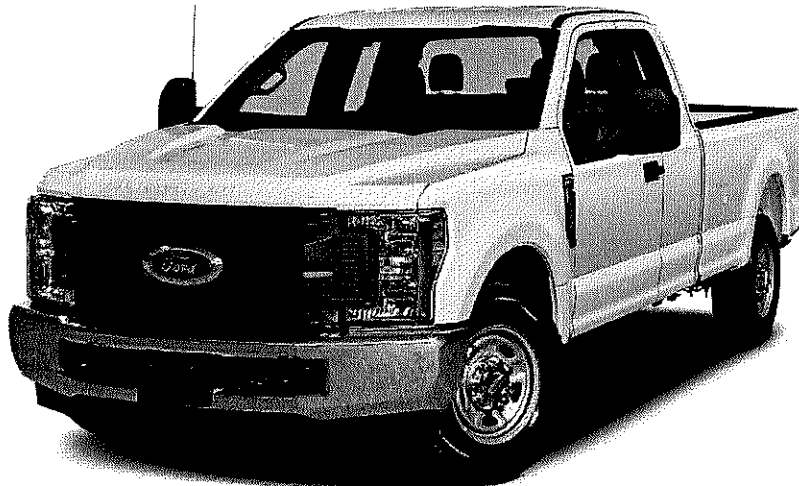
Customer Proposal

Prepared by:

Chad Welsh
Office: 623-977-8888

Date: 10/01/2018

Vehicle: 2019 F-250 XL
4x4 SD Super Cab 8' box 164" WB SRW
Quote ID: SanLuisX2B





Peoria Ford
9130 W. Bell Rd., Peoria, Arizona, 853823700
Office: 623-977-8888
Fax: 623-877-8372

2019 F-250, SD Super Cab
4x4 SD Super Cab 8' box 164" WB SRW
XL(X2B)
Price Level: 930 Quote ID: SanLuisX2B

Table of Contents

Description	Page
Cover Page	1
Table of Contents	2
Selected Options	3
Selected Equip & Specs	6
Warranty - Selected	15



Peoria Ford
 9130 W. Bell Rd., Peoria, Arizona, 853823700
 Office: 623-977-8888
 Fax: 623-877-8372

2019 F-250, SD Super Cab
 4x4 SD Super Cab 8' box 164" WB SRW
 XL(X2B)
 Price Level: 930 Quote ID: SanLuisX2B

Selected Options

Code	Description
Base Vehicle	
X2B	Base Vehicle Price (X2B)
Packages	
600A	Order Code 600A <i>Includes:</i> - Engine: 6.2L 2-Valve SOHC EFI NA V8 Flex-Fuel Flex-Fuel badge on fleet orders only. - Transmission: TorqShift-G 6-Spd Auto w/SelectShift - 3.73 Axle Ratio - GVWR: 10,000 lb Payload Package - Tires: LT245/75Rx17E BSW A/S (4) - Wheels: 17" Argent Painted Steel Includes painted hub covers/center ornaments.
Powertrain	
996	Engine: 6.2L 2-Valve SOHC EFI NA V8 Flex-Fuel <i>Flex-Fuel badge on fleet orders only.</i>
44S	Transmission: TorqShift-G 6-Spd Auto w/SelectShift
X37	3.73 Axle Ratio
STDGV	GVWR: 10,000 lb Payload Package
Wheels & Tires	
TD8	Tires: LT245/75Rx17E BSW A/S (4)
64A	Wheels: 17" Argent Painted Steel <i>Includes painted hub covers/center ornaments.</i>
512	Spare Tire, Wheel, Carrier & Jack Spare tire is standard equipment; becomes optional when (66D) Pickup Box Delete is ordered.
Seats & Seat Trim	
1	Cloth 40/20/40 Split Bench Seat <i>Includes center armrest, cupholder, storage and driver's side manual lumbar.</i>
Other Options	
164WB	164" Wheelbase
90L	Power Equipment Group

Prices and content availability as shown are subject to change and should be treated as estimates only. Actual base vehicle, package and option pricing may vary from this estimate because of special local pricing, availability or pricing adjustments not reflected in the dealer's computer system. See salesperson for the most current information.



Peoria Ford
 9130 W. Bell Rd., Peoria, Arizona, 853823700
 Office: 623-977-8888
 Fax: 623-877-8372

2019 F-250, SD Super Cab
 4x4 SD Super Cab 8' box 164" WB SRW
 XL(X2B)
 Price Level: 930 Quote ID: SanLuisX2B

Selected Options (cont'd)

Code	Description
66D	<p>Deletes passenger-side lock cylinder. Includes upgraded door trim panel. <i>Includes:</i></p> <ul style="list-style-type: none"> - Accessory Delay - Manual Telescoping/Folding Trailer Tow Mirrors Includes power heated glass, heated convex spotter mirror and integrated clearance lights and turn signal indicators. - Advanced Security Pack Includes SecuriLock Passive Anti-Theft System (PATS) and inclination/intrusion sensors. - Power Locks - Power Tailgate Lock - Power Front & Rear Seat Windows Includes 1-touch up/down driver/passenger window. - Remote Keyless Entry
18B	Pickup Box Delete
PAINT	<p>Deletes tie-down hooks, tailgate, rearview camera, 7/4 pin connector and center high-mounted stop lamp (CHMSL) (only on vehicles over 10,000 lbs.GVWR). Incomplete vehicle package - requires further manufacture and certification by a final stage manufacturer. In addition, Ford urges manufacturers to follow the recommendations of the Ford Incomplete Vehicle Manual and the Ford Truck Body Builder's Layout Book (and applicable supplements). <i>Includes:</i></p> <ul style="list-style-type: none"> - Rear Bumper Delete
66S	<p>Platform Running Boards</p> <p>Monotone Paint Application</p> <p>Upfitter Switches (6)</p> <p>REQUIRES Extra Extra Heavy-Duty Alternator (67E) when ordered with 110V/400W Outlet (43C) and Snow Plow Pkg. (473) or Snow Plow/Camper Pkg. (47B).</p> <p><i>Located in overhead console.</i> <i>Includes:</i></p> <ul style="list-style-type: none"> - Extra Heavy-Duty 200 Amp Alternator
Fleet Options	
525	<p>Steering Wheel-Mounted Cruise Control (LPO)</p> <p>Requires valid FIN code.</p>
585	<p>Radio: AM/FM Stereo/MP3 (LPO) (Fleet)</p> <p>Requires valid FIN code.</p> <p><i>Includes 6 speakers.</i> <i>Includes:</i></p> <ul style="list-style-type: none"> - SYNC Communications & Entertainment System Includes enhanced voice recognition with 911 Assist, 4.2" LCD center stack screen, AppLink, 1 smart-charging USB port and steering wheel audio controls.
Emissions	
425	50-State Emissions System
Interior Colors	
1S_02	Medium Earth Gray
Primary Colors	

Prices and content availability as shown are subject to change and should be treated as estimates only. Actual base vehicle, package and option pricing may vary from this estimate because of special local pricing, availability or pricing adjustments not reflected in the dealer's computer system. See salesperson for the most current information.



Peoria Ford
9130 W. Bell Rd., Peoria, Arizona, 853823700
Office: 623-977-8888
Fax: 623-877-8372

2019 F-250, SD Super Cab
4x4 SD Super Cab 8' box 164" WB SRW
XL(X2B)
Price Level: 930 Quote ID: SanLuisX2B

Selected Options (cont'd)

Code	Description
Z1_01	Oxford White

Prices and content availability as shown are subject to change and should be treated as estimates only. Actual base vehicle, package and option pricing may vary from this estimate because of special local pricing, availability or pricing adjustments not reflected in the dealer's computer system. See salesperson for the most current information.



Selected Equipment & Specs

Dimensions

- * Exterior length: 254.4"
- * Exterior width: 80.0"
- * Wheelbase: 164.0"
- * Rear track: 67.2"
- * Min ground clearance: 8.2"
- * Rear legroom: 33.5"
- * Rear headroom: 40.3"
- * Rear hiproom: 64.7"
- * Rear shoulder room: 65.8"
- * Approach angle: 18.7 deg
- * Cargo volume: 31.6cu.ft.
- * Cab to axle: 56.1"
- * Exterior height: 81.4"
- * Front track: 68.3"
- * Turning radius: 27.1'
- * Front legroom: 43.9"
- * Front headroom: 40.8"
- * Front hiproom: 62.5"
- * Front shoulder room: 66.7"
- * Passenger volume: 116.0cu.ft.
- * Departure angle: 22.1 deg
- * Maximum cargo volume: 31.6cu.ft.

Powertrain

- * 385hp 6.2L SOHC 16 valve V-8 engine with variable valve control, SMPI
- * federal
- * Part-time
- * Fuel Economy Highway: N/A
- * Recommended fuel : regular unleaded
- * TorqShift-G 6 speed automatic transmission with overdrive
- * Fuel Economy Cty: N/A

Suspension/Handling

- * Front Mono-beam non-independent suspension with anti-roll bar, HD shocks
- * Firm ride Suspension
- * Front and rear 17 x 7.5 argent steel wheels
- * Rear rigid axle leaf spring suspension with HD shocks
- * Hydraulic power-assist re-circulating ball Steering
- * LT245/75SR17 EBSW AS front and rear tires

Body Exterior

- * 4 doors
- * Reverse opening right rear passenger
- * Turn signal indicator in mirrors
- * Black bumpers
- * Class V trailer hitch with trailer sway control
- * Front and rear 17 x 7.5 wheels
- * Reverse opening left rear passenger
- * Driver and passenger power remote heated, manual folding door mirrors with turn signal indicator
- * Black door mirrors
- * Running boards
- * Clearcoat paint
- * 2 front tow hook(s)

Convenience

- * Manual air conditioning with air filter
- * Power windows
- * Driver and passenger 1-touch down
- * Manual tilt steering wheel
- * Day-night rearview mirror
- * Wireless phone connectivity
- * 2 1st row LCD monitors
- * Passenger visor mirror
- * Driver and passenger door bins
- * Upfitter switches
- * Cruise control with steering wheel controls
- * Driver and passenger 1-touch up
- * Remote power door locks with 2 stage unlock and illuminated entry
- * Manual telescopic steering wheel
- * 911 Assist emergency SOS
- * AppLink smart device integration
- * Front cupholders
- * Full overhead console
- * Rear door bins

Seats and Trim

- * Seating capacity of 6
- * Front 40-20-40 split-bench seat

Prices and content availability as shown are subject to change and should be treated as estimates only. Actual base vehicle, package and option pricing may vary from this estimate because of special local pricing, availability or pricing adjustments not reflected in the dealer's computer system. See salesperson for the most current information.



Selected Equipment & Specs (cont'd)

- * 4-way driver seat adjustment
- * 4-way passenger seat adjustment
- * 60-40 folding rear split-bench seat
- * Manual driver lumbar support
- * Centre front armrest with storage
- * Cloth seat upholstery

Entertainment Features

- * AM/FM stereo radio with radio data system
- * Steering wheel mounted radio controls
- * Streaming audio
- * SYNC external memory control
- * 6 speakers
- * Fixed antenna

Lighting, Visibility and Instrumentation

- * Halogen aero-composite headlights
- * Fully automatic headlights
- * Light tinted windows
- * Tachometer
- * Compass
- * Low tire pressure warning
- * Trip odometer
- * Delay-off headlights
- * Variable intermittent front windshield wipers
- * Front reading lights
- * Oil pressure gauge
- * Outside temperature display
- * Trip computer

Safety and Security

- * 4-wheel ABS brakes
- * 4-wheel disc brakes
- * ABS and driveline traction control
- * Dual seat mounted side impact airbag supplemental restraint system
- * Remote activated perimeter/approach lighting
- * Security system with SecuriLock immobilizer
- * Manually adjustable front head restraints
- * Brake assist with hill hold control
- * Electronic stability control
- * Dual front impact airbag supplemental restraint system with passenger cancel
- * Safety Canopy System curtain 1st and 2nd row overhead airbag supplemental restraint system
- * Power remote door locks with 2 stage unlock and panic alarm
- * MyKey restricted driving mode
- * 3 manually adjustable rear head restraints

Dimensions

General Weights

Curb	6268 lbs.	GVWR	10000 lbs.
Payload	3470 lbs.		

Front Weights

Front GAWR	4800 lbs.	Front curb weight	3885 lbs.
Front axle capacity	6000 lbs.	Front spring rating	4800 lbs.
Front tire/wheel capacity	6390 lbs.		

Rear Weights

Rear GAWR	6340 lbs.	Rear curb weight	2383 lbs.
Rear axle capacity	6200 lbs.	Rear spring rating	6340 lbs.
Rear tire/wheel capacity	6390 lbs.		

Trailer Type

Type	Regular	Class	V
Hitch	Yes	Trailer sway control	Yes

General Trailering

5th-wheel towing capacity	12500 lbs.	Gooseneck towing capacity	12500 lbs.
Towing capacity	12500 lbs.	GCWR	19500 lbs.

Fuel Tank type

Prices and content availability as shown are subject to change and should be treated as estimates only. Actual base vehicle, package and option pricing may vary from this estimate because of special local pricing, availability or pricing adjustments not reflected in the dealer's computer system. See salesperson for the most current information.



Peoria Ford
 9130 W. Bell Rd., Peoria, Arizona, 853823700
 Office: 623-977-8888
 Fax: 623-877-8372

2019 F-250, SD Super Cab
 4x4 SD Super Cab 8' box 164" WB SRW
 XL(X2B)
 Price Level: 930 Quote ID: SanLuisX2B

Selected Equipment & Specs (cont'd)

Capacity	34 gal.		
<i>Off Road</i>			
Approach angle	19 deg	Departure angle	22 deg
Ramp breakover angle	22 deg	Min ground clearance	8"
Load floor height	38"		

<i>Interior cargo</i>			
Cargo volume	31.6 cu.ft.	Maximum cargo volume	31.6 cu.ft.

Powertrain

Engine Type

Block material	Iron	Cylinders	V-8
Head material	Aluminum	Ignition	Spark
Injection	Sequential MPI	Liters	6.2L
Orientation	Longitudinal	Recommended fuel	Regular unleaded
Valves per cylinder	2	Valvetrain	SOHC
Variable valve control	Yes		

Engine Spec

Bore	4.02"	Compression ratio	9.8:1
Displacement	379 cu.in.	Stroke	3.74"

Engine Power

SAEJ1349 AUG2004 compliant	Yes	Output	385 HP @ 5,750 RPM
Torque	430 ft.-lb @ 3,800 RPM		

Alternator

Type	HD	Amps	200
------	----	------	-----

Battery

Amp hours	72	Cold cranking amps	650
Run down protection	Yes		

Transmission

Electronic control	Yes	Lock-up	Yes
Overdrive	Yes	Speed	6
Type	Automatic		

Transmission Gear Ratios

1st	4.17	2nd	2.34
3rd	1.52	4th	1.14
5th	0.87	6th	0.69
Reverse Gear ratios	3.4		

Transmission Torque Converter

Stall ratio	2.01
-------------	------

Transmission Extras

Driver selectable mode	Yes	Sequential shift control	SelectShift
Oil cooler	Regular duty		

Drive Type

4wd type	Part-time	Type	Four-wheel
----------	-----------	------	------------

Drive Feature

Prices and content availability as shown are subject to change and should be treated as estimates only. Actual base vehicle, package and option pricing may vary from this estimate because of special local pricing, availability or pricing adjustments not reflected in the dealer's computer system. See salesperson for the most current information.



Peoria Ford
 9130 W. Bell Rd., Peoria, Arizona, 853823700
 Office: 623-977-8888
 Fax: 623-877-8372

2019 F-250, SD Super Cab
 4x4 SD Super Cab 8' box 164" WB SRW
 XL(X2B)
 Price Level: 930 Quote ID: SanLuisX2B

Selected Equipment & Specs (cont'd)

Traction control	ABS and driveline	Locking hub control	Auto
Transfer case shift	Electronic		
Drive Axle			
Ratio	3.73		
Exhaust			
Material	Stainless steel	System type	Single
Emissions			
CARB	Federal		
Fuel Economy			
Fuel type	Gasoline		
Fuel Economy (Alternate 1)			
Fuel type	E85		
Acceleration			
0-60 mph (s)	6.76		
1/4 Mile			
Seconds	15.2	Speed	91 mph
Skid Pad			
Lateral acceleration (g)	0.6		
Slalom			
Speed	50 mph		
Driveability			
Brakes			
ABS	4-wheel	ABS channels	4
Type	4-wheel disc	Vented discs	Front and rear
Brake Assistance			
Brake assist	Yes	Hill hold control	Yes
Suspension Control			
Ride	Firm	Electronic stability control	Stability control with anti-roll
Front Suspension			
Independence	Mono-beam non-independent	Anti-roll bar	Regular
Front Spring			
Type	Coil	Grade	Regular
Front Shocks			
Type	HD		
Rear Suspension			
Independence	Rigid axle	Type	Leaf
Rear Spring			
Type	Leaf	Grade	HD

Prices and content availability as shown are subject to change and should be treated as estimates only. Actual base vehicle, package and option pricing may vary from this estimate because of special local pricing, availability or pricing adjustments not reflected in the dealer's computer system. See salesperson for the most current information.



Peoria Ford
 9130 W. Bell Rd., Peoria, Arizona, 853823700
 Office: 623-977-8888
 Fax: 623-877-8372

2019 F-250, SD Super Cab
 4x4 SD Super Cab 8' box 164" WB SRW
 XL(X2B)
 Price Level: 930 Quote ID: SanLuisX2B

Selected Equipment & Specs (cont'd)

<i>Rear Shocks</i>			
Type	HD		
<i>Steering</i>			
Activation	Hydraulic power-assist	Type	Re-circulating ball
<i>Steering Specs</i>			
# of wheels	2		
Exterior			
<i>Front Wheels</i>			
Diameter	17"	Width	7.50"
<i>Rear Wheels</i>			
Diameter	17"	Width	7.50"
<i>Spare Wheels</i>			
Wheel material	Steel		
<i>Front and Rear Wheels</i>			
Appearance	Argent	Material	Steel
Covers	Hub		
<i>Front Tires</i>			
Aspect	75	Diameter	17"
Sidewalls	BSW	Speed	S
Tread	AS	Type	LT
Width	245mm	LT load rating	E
RPM	645		
<i>Rear Tires</i>			
Aspect	75	Diameter	17"
Sidewalls	BSW	Speed	S
Tread	AS	Type	LT
Width	245mm	LT load rating	E
RPM	645		
<i>Spare Tire</i>			
Mount	Underbody w/crankdown	Type	Full-size
<i>Wheels</i>			
Front track	68.3"	Rear track	67.2"
Turning radius	27.1'	Wheelbase	164.0"
<i>Body Features</i>			
Front license plate bracket	Yes	Running boards	Yes
Body material	Aluminum	Side impact beams	Yes
Front tow hook(s)	2		
<i>Body Doors</i>			
Door count	4	Left rear passenger	Reverse opening
Right rear passenger	Reverse opening		
<i>Exterior Dimensions</i>			
Length	254.4"	Body width	80.0"

Prices and content availability as shown are subject to change and should be treated as estimates only. Actual base vehicle, package and option pricing may vary from this estimate because of special local pricing, availability or pricing adjustments not reflected in the dealer's computer system. See salesperson for the most current information.



Peoria Ford
 9130 W. Bell Rd., Peoria, Arizona, 853823700
 Office: 623-977-8888
 Fax: 623-877-8372

2019 F-250, SD Super Cab
 4x4 SD Super Cab 8' box 164" WB SRW
 XL(X2B)
 Price Level: 930 Quote ID: SanLuisX2B

Selected Equipment & Specs (cont'd)

Body height	81.4"	Cab to axle	56.1"
Axle to end of frame	47.6"	Frame section modulus	10.7cu.in.
Frame yield strength (psi)	50000.0	Front bumper to Front axle	38.2"
Front bumper to back of cab	146.3"		

Safety

Airbags

Driver front-impact	Yes	Driver side-impact	Seat mounted
Overhead	Safety Canopy System curtain 1st and 2nd row	Passenger front-impact	Cancellable
Passenger side-impact	Seat mounted		

Seatbelt

Rear centre 3 point	Yes	Height adjustable	Front
---------------------	-----	-------------------	-------

Security

Immobilizer	SecuriLock	Panic alarm	Yes
Restricted driving mode	MyKey		

Seating

Passenger Capacity

Capacity	6
----------	---

Front Seats

Split	40-20-40	Type	Split-bench
-------	----------	------	-------------

Driver Seat

Fore/aft	Manual	Reclining	Manual
Way direction control	4	Lumbar support	Manual

Passenger seat

Fore/aft	Manual	Reclining	Manual
Way direction control	4		

Front Head Restraint

Control	Manual	Type	Adjustable
---------	--------	------	------------

Front Armrest

Centre	Yes	Storage	Yes
--------	-----	---------	-----

Rear Seats

Descriptor	Split-bench	Facing	Front
Folding	60-40	Folding position	Fold-up cushion
Type	Fixed		

Rear Head Restraints

Control	Manual	Type	Adjustable
Number	3		

Front Seat Trim

Material	Cloth	Back material	Cloth
----------	-------	---------------	-------

Rear Seat Trim Group

Material	Vinyl	Back material	Carpet
----------	-------	---------------	--------

Prices and content availability as shown are subject to change and should be treated as estimates only. Actual base vehicle, package and option pricing may vary from this estimate because of special local pricing, availability or pricing adjustments not reflected in the dealer's computer system. See salesperson for the most current information.



Peoria Ford
 9130 W. Bell Rd., Peoria, Arizona, 853823700
 Office: 623-977-8888
 Fax: 623-877-8372

2019 F-250, SD Super Cab
 4x4 SD Super Cab 8' box 164" WB SRW
 XL(X2B)
 Price Level: 930 Quote ID: SanLuisX2B

Selected Equipment & Specs (cont'd)

Convenience

AC And Heat Type

Air conditioning Manual
 Underseat ducts Yes

Air filter Yes

Audio System

Radio AM/FM stereo
 Radio grade Regular
 External memory control SYNC

Radio data system Yes
 Seek-scan Yes

Audio Speakers

Speaker type Regular

Speakers 6

Audio Controls

Speed sensitive volume Yes
 Voice activation Yes

Steering wheel controls Yes
 Streaming audio Bluetooth yes

Audio Antenna

Type Fixed

LCD Monitors

1st row 2

Primary monitor size (inches) 4.2

Cruise Control

Cruise control With steering wheel controls

Convenience Features

Retained accessory power Yes
 Emergency SOS 911 Assist
 Smart device integration App link

12V DC power outlet 2
 Wireless phone connectivity Bluetooth
 Upfitter switches Yes

Door Lock Activation

Type Power with 2 stage unlock
 Integrated key/remote Yes

Remote Keyfob (front doors)

Instrumentation Type

Display Analog

Instrumentation Gauges

Tachometer Yes
 Engine temperature Yes
 Engine hour meter Yes

Oil pressure Yes
 Transmission fluid temp Yes

Instrumentation Warnings

Oil pressure Yes
 Battery Yes
 Key Yes
 Door ajar Yes
 Brake fluid Yes

Engine temperature Yes
 Lights on Yes
 Low fuel Yes
 Service interval Yes
 Low tire pressure Tire specific

Instrumentation Displays

Clock In-radio display
 Exterior temp Yes

Compass Yes
 Systems monitor Yes

Instrumentation Feature

Prices and content availability as shown are subject to change and should be treated as estimates only. Actual base vehicle, package and option pricing may vary from this estimate because of special local pricing, availability or pricing adjustments not reflected in the dealer's computer system. See salesperson for the most current information.



Peoria Ford
 9130 W. Bell Rd., Peoria, Arizona, 853823700
 Office: 623-977-8888
 Fax: 623-877-8372

2019 F-250, SD Super Cab
 4x4 SD Super Cab 8' box 164" WB SRW
 XL(X2B)
 Price Level: 930 Quote ID: SanLuisX2B

Selected Equipment & Specs (cont'd)

Trip computer	Yes	Trip odometer	Yes
<i>Steering Wheel Type</i>			
Material	Urethane	Tilting	Manual
Telescoping	Manual		
<i>Front Side Windows</i>			
Window 1st row activation	Power		
<i>Windows Rear Side</i>			
2nd row activation	Power		
<i>Window Features</i>			
1-touch down	Driver and passenger	1-touch up	Driver and passenger
Tinted	Light		
<i>Front Windshield</i>			
Wiper	Variable intermittent		
<i>Rear Windshield</i>			
Window	Fixed		

Interior

<i>Passenger Visor</i>			
Mirror	Yes		
<i>Rear View Mirror</i>			
Day-night	Yes		
<i>Headliner</i>			
Coverage	Full	Material	Cloth
<i>Floor Trim</i>			
Coverage	Full	Covering	Vinyl/rubber
<i>Trim Feature</i>			
Gear shift knob	Urethane	Interior accents	Chrome
<i>Lighting</i>			
Dome light type	Fade	Front reading	Yes
Illuminated entry	Yes	Variable IP lighting	Yes
<i>Overhead Console Storage</i>			
Storage	Yes	Type	Full
<i>Storage</i>			
Driver door bin	Yes	Front Beverage holder(s)	Yes
Glove box	Locking	Passenger door bin	Yes
Illuminated	Yes	Instrument panel	Bin
Dashboard	Covered	Rear door bins	Yes
<i>Legroom</i>			
Front	43.9"	Rear	33.5"
<i>Headroom</i>			
Front	40.8"	Rear	40.3"

Prices and content availability as shown are subject to change and should be treated as estimates only. Actual base vehicle, package and option pricing may vary from this estimate because of special local pricing, availability or pricing adjustments not reflected in the dealer's computer system. See salesperson for the most current information.



Peoria Ford
 9130 W. Bell Rd., Peoria, Arizona, 853823700
 Office: 623-977-8888
 Fax: 623-877-8372

2019 F-250, SD Super Cab
 4x4 SD Super Cab 8' box 164" WB SRW
 XL(X2B)
 Price Level: 930 Quote ID: SanLuisX2B

Selected Equipment & Specs (cont'd)

<i>Hip Room</i>			
Front	62.5"	Rear	64.7"
<i>Shoulder Room</i>			
Front	66.7"	Rear	65.8"
<i>Interior Volume</i>			
Passenger volume	116.0 cu.ft.		

Prices and content availability as shown are subject to change and should be treated as estimates only. Actual base vehicle, package and option pricing may vary from this estimate because of special local pricing, availability or pricing adjustments not reflected in the dealer's computer system. See salesperson for the most current information.



Peoria Ford
 9130 W. Bell Rd., Peoria, Arizona, 853823700
 Office: 623-977-8888
 Fax: 623-877-8372

2019 F-250, SD Super Cab
 4x4 SD Super Cab 8' box 164" WB SRW
 XL(X2B)
 Price Level: 930 Quote ID: SanLuisX2B

Warranty - Selected Equipment & Specs

Warranty

Basic

Distance 36000 miles Months 36 months

Powertrain

Distance 60000 miles Months 60 months

Corrosion Perforation

Distance Unlimited miles Months 60 months

Roadside Assistance

Distance 60000 miles Months 60 months

Prices and content availability as shown are subject to change and should be treated as estimates only. Actual base vehicle, package and option pricing may vary from this estimate because of special local pricing, availability or pricing adjustments not reflected in the dealer's computer system. See salesperson for the most current information.