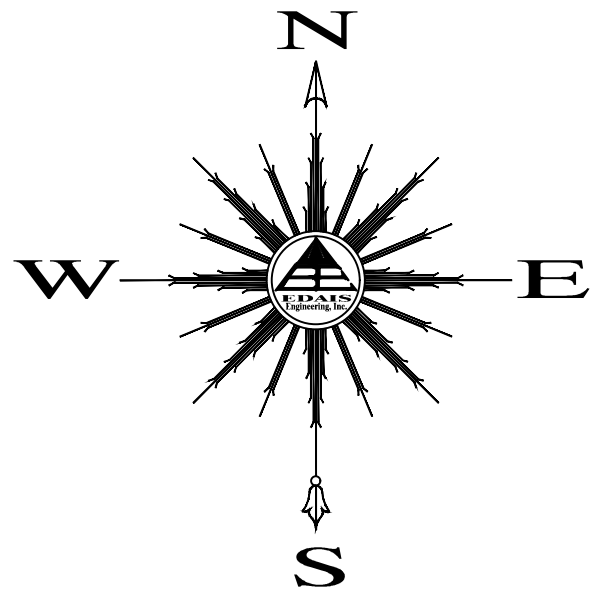


SANTA CECILIA No. 3 SUBDIVISION

LOT 3 OF BORDER RANCHES SUBDIVISION AS RECORDED IN BOOK 27 OF PLATS, PAGES 9-10,
YUMA COUNTY RECORDERS OFFICE, YUMA COUNTY, ARIZONA

DATE OF PREPARATION: AUGUST 2018 NUMBER OF LOTS: 141 ACREAGE: 30.30 ACRES



SCALE: 1" = 100'

LINE DATA

LINE	LENGTH	BEARING
L1	21.20'	N44°58'01"E
L2	21.22'	N45°01'59"W
L3	21.22'	S45°01'59"E
L4	21.20'	S44°57'45"W
L5	21.22'	S45°02'15"E
L6	42.44'	S45°02'03"E
L7	42.41'	S44°58'01"W

CURVE DATA

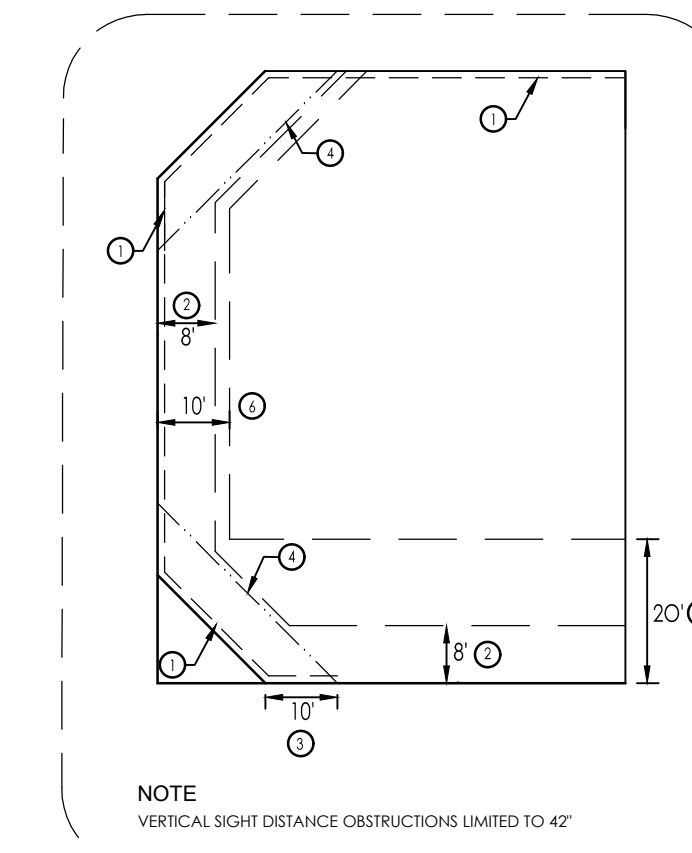
CURVE	DELTA	CHORD DIRECTION	CHORD	TANGENT	RADIUS	LENGTH
C1	062°44'13"	S31°54'52"E	57.78'	33.84'	55.50'	60.77'
C2	134°03'09"	N22°55'06"E	102.20'	130.92'	55.50'	129.85'
C3	090°00'00"	S45°03'20"E	78.49'	55.50'	55.50'	87.18'

AREAS

LOT	AREA	LOT	AREA	LOT	AREA	LOT	AREA	LOT	AREA	LOT	AREA	LOT	AREA
332	5937.50 SF	352	8413.19 SF	372	6253.39 SF	392	6253.39 SF	412	6253.39 SF	432	6253.39 SF	452	6255.90 SF
333	6491.98 SF	353	8413.03 SF	373	6253.39 SF	393	6253.39 SF	413	6253.39 SF	433	6253.39 SF	453	6255.90 SF
334	6484.00 SF	354	9001.44 SF	374	6253.39 SF	394	6253.39 SF	414	6325.10 SF	434	6253.39 SF	454	6255.90 SF
335	6484.00 SF	355	6325.10 SF	375	6253.39 SF	395	6253.39 SF	415	6325.10 SF	435	6253.39 SF	455	6255.90 SF
336	6484.00 SF	356	6253.39 SF	376	6253.39 SF	396	6253.39 SF	416	6253.39 SF	436	6253.39 SF	456	6255.90 SF
337	6484.00 SF	357	6253.39 SF	377	6253.39 SF	397	6253.39 SF	417	6253.39 SF	437	6253.39 SF	457	6255.90 SF
338	6484.00 SF	358	6253.39 SF	378	6253.39 SF	398	6252.97 SF	418	6253.39 SF	438	6253.39 SF	458	6247.44 SF
339	6484.00 SF	359	6253.39 SF	379	6253.39 SF	399	6325.10 SF	419	6253.39 SF	439	6253.39 SF	459	6215.19 SF
340	6484.00 SF	360	6253.39 SF	380	6253.39 SF	400	6325.10 SF	420	6253.39 SF	440	6253.39 SF	460	6275.00 SF
341	6484.00 SF	361	6253.38 SF	381	6253.39 SF	401	6251.37 SF	421	6253.39 SF	441	6253.39 SF	461	6481.98 SF
342	6484.00 SF	362	6253.38 SF	382	6253.39 SF	402	6253.39 SF	422	6253.39 SF	442	6253.39 SF	462	6485.00 SF
343	6484.00 SF	363	6253.38 SF	383	6253.39 SF	403	6253.39 SF	423	6253.39 SF	443	6253.39 SF	463	6485.00 SF
344	6275.00 SF	364	6253.38 SF	384	6325.10 SF	404	6253.39 SF	424	6253.39 SF	444	6325.10 SF	464	6485.00 SF
345	6274.94 SF	365	6253.38 SF	385	6325.10 SF	405	6253.39 SF	425	6253.39 SF	445	6215.19 SF	465	6485.00 SF
346	5999.77 SF	366	6253.38 SF	386	6253.39 SF	406	6253.39 SF	426	6253.39 SF	446	6253.39 SF	466	6485.00 SF
347	5999.60 SF	367	6253.38 SF	387	6253.39 SF	407	6253.39 SF	427	6253.39 SF	447	6253.39 SF	467	6485.00 SF
348	5999.42 SF	368	6256.99 SF	388	6253.39 SF	408	6253.39 SF	428	6248.95 SF	448	6255.90 SF	468	6485.00 SF
349	10865.42 SF	369	6325.10 SF	389	6253.39 SF	409	6253.39 SF	429	6325.10 SF	449	6255.90 SF	469	6485.00 SF
350	9384.52 SF	370	6325.11 SF	390	6253.39 SF	410	6253.39 SF	430	6325.10 SF	450	6255.90 SF	470	6485.00 SF
351	7557.60 SF	371	6255.40 SF	391	6253.39 SF	411	6253.39 SF	431	6247.35 SF	451	6255.90 SF	471	6485.00 SF

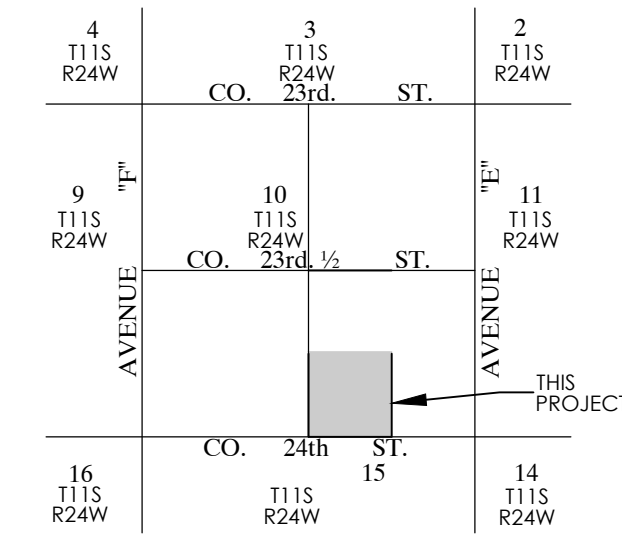
LEGEND

- CENTERLINE
- RIGHT-OF-WAY (ROW) LINE
- NEW PROPERTY LINE
- EASEMENT (TYPE AS NOTED)
- BOUNDARY LINE
- NEW STREET MONUMENT AS PER YUMA COUNTY STD. DETAIL No. 4-080
- NEW SUBDIVISION BOUNDARY MONUMENT AS PER YUMA COUNTY STD. DETAIL No. 04-030
- EXISTING MONUMENT (TYPE AS SHOWN)
- ① NEW LOT NUMBER
- ④7 EXISTING LOT NUMBER
- A . P . N ASSESSOR PARCEL NUMBER
- B.C. BRASS CAP
- H.H. HAND HOLE
- Y.C.R. YUMA COUNTY RECORDS
- G. & S.R.B. & M. GILA AND SALT RIVER BASE AND MERIDIAN



TYPICAL CORNER LOT DETAIL

LOCATION MAP



TRACT AREAS OWNER

TRACT	AREA	OWNER
"A"	1.47 ACRES	R&G ASSOCIATES LLC. P.O. BOX 1649 SAN LUIS, AZ 85349 (928) 627-9385

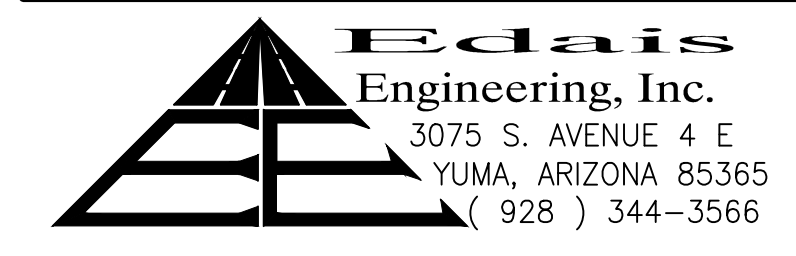
BASIS OF BEARING

THE WEST LINE OF THE SW 1/4 OF SECTION 10, T11S, R24W, G.S.R.B.&M., YUMA COUNTY, ARIZONA (BEING THE CENTERLINE OF AVENUE "T"), AS SHOWN ON BORDER RANCHES SUBDIVISION, AS RECORDED IN BOOK 27 OF PLATS, PAGES 9&10, YUMA COUNTY RECORDERS OFFICE, YUMA COUNTY, ARIZONA, NAMELY BEARING N00°02'42"W

SURVEYOR'S CERTIFICATE

I HEREBY CERTIFY THAT I AM A LAND SURVEYOR LISTED ON THE ROSTER OF ACTIVE REGISTRANTS BY THE STATE BOARD OF TECHNICAL REGISTRATION OF ARIZONA AND THAT THIS MAP CONSISTING OF ONE (1) SHEET CORRECTLY REPRESENTS A SURVEY MADE UNDER MY SUPERVISION THAT ALL MONUMENTS SHOWN HEREON ACTUALLY EXIST AND THEIR POSITIONS ARE CORRECTLY SHOWN.

PREPARED BY:



**PRELIMINARY
NOT FOR
CONSTRUCTION**

SANTA CECILIA No. 4 SUBDIVISION

LOT 3 OF BORDER RANCHES SUBDIVISION AS RECORDED IN BOOK 27 OF PLATS, PAGES 9-10,
YUMA COUNTY RECORDERS OFFICE, YUMA COUNTY, ARIZONA

DATE OF PREPARATION: AUGUST 2018 NUMBER OF LOTS: 134 ACREAGE: 36.76 ACRES

A.P.N. 227-10-001
STATE OF ARIZONA
(UNDEVELOPED LAND)
ZONING: R1-40

LINE DATA

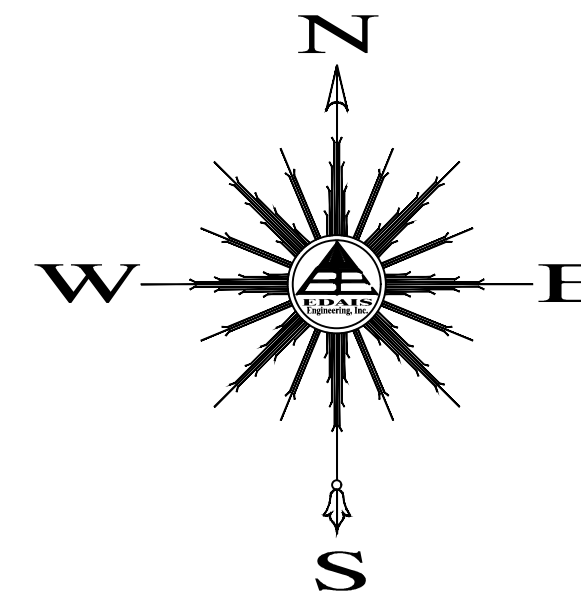
LINE	LENGTH	BEARING	LINE	LENGTH	BEARING
L1	21.20'	N44°58'01"E	L8	42.44'	N45°01'59"W
L2	21.22'	N45°01'59"W	L9	42.41'	N44°58'01"W
L3	21.22'	S45°01'59"E	L10	42.41'	S44°57'45"W
L4	21.20'	S44°57'45"W	L11	42.45'	S45°02'15"E
L5	21.22'	S45°02'15"E			
L6	50.00'	S10°19'26"W			
L7	49.84'	N79°34'51"E			

CURVE DATA

CURVE	DELTA	CHORD DIRECTION	CHORD	TANGENT	RADIUS	LENGTH
C4	110°44'35"	N45°02'51"W	98.74'	86.88'	60.00'	115.97'

AREAS

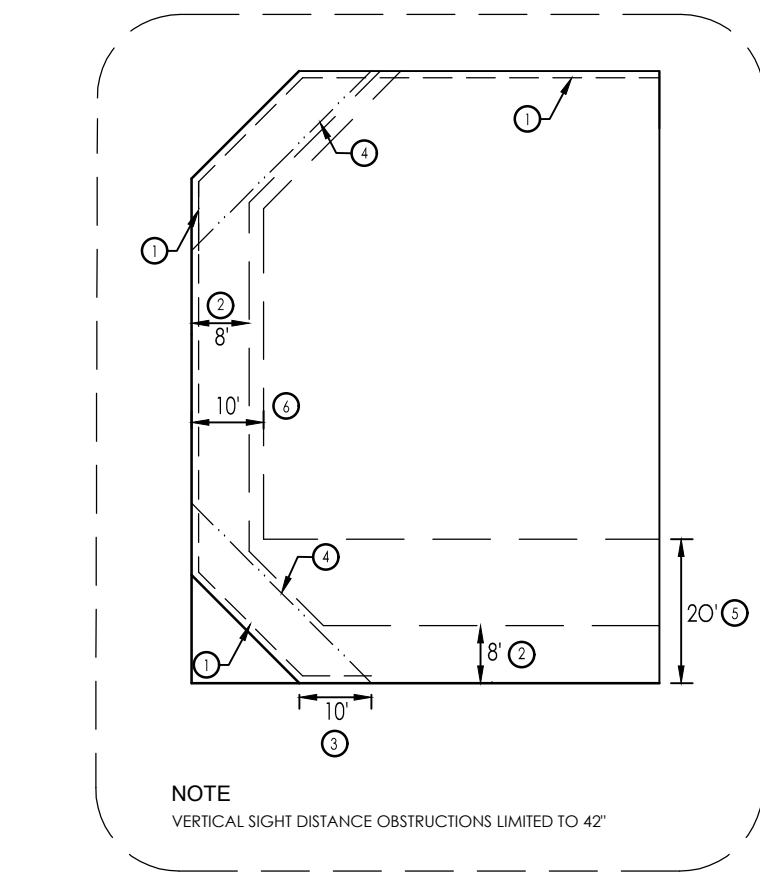
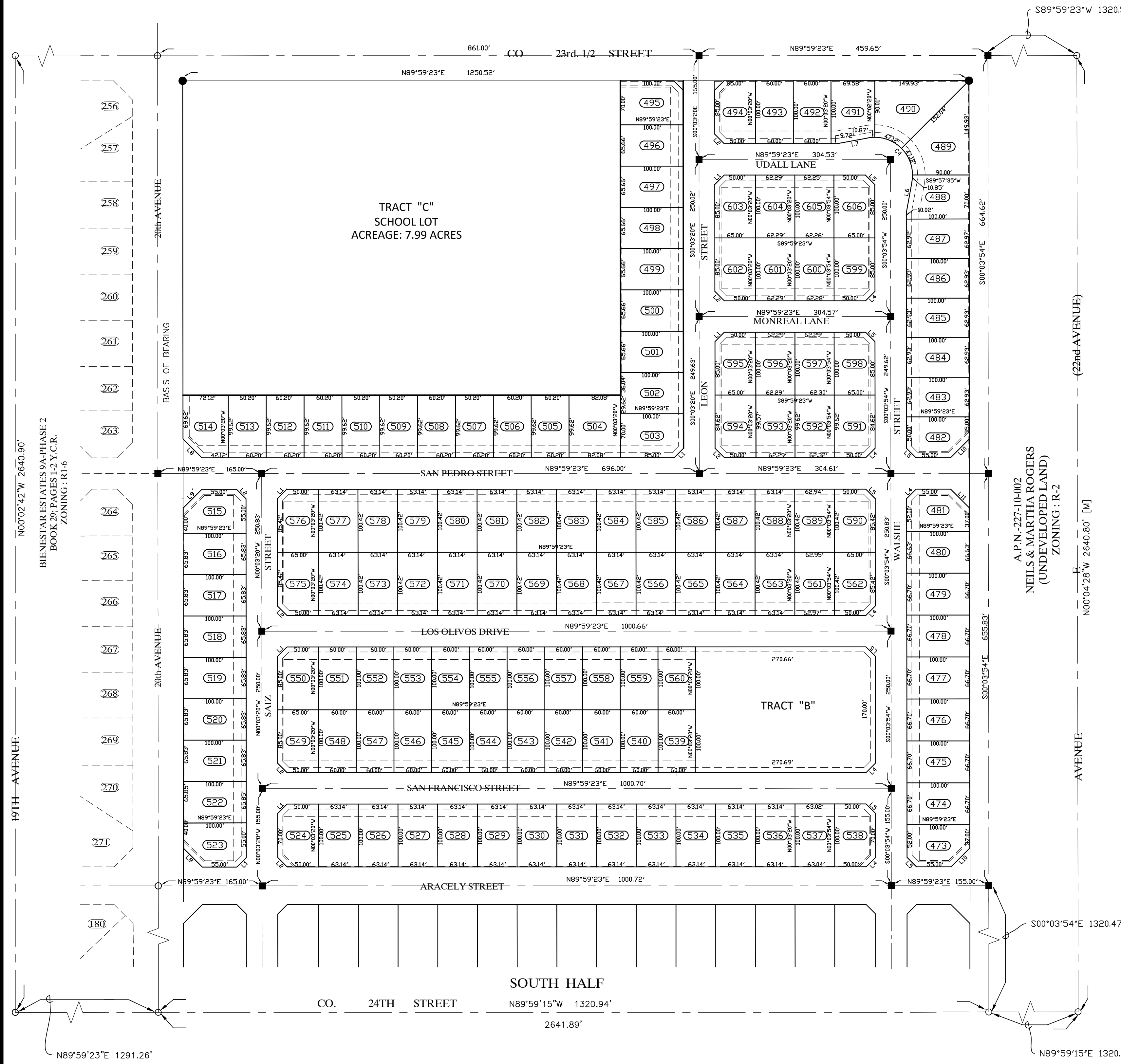
LOT	AREA	LOT	AREA	LOT	AREA	LOT	AREA	LOT	AREA	LOT	AREA	LOT	AREA
473	6137.50 SF	493	6000.00 SF	513	5997.17 SF	533	6314.00 SF	553	5999.99 SF	573	6340.21 SF	593	6205.42 SF
474	6670.00 SF	494	6387.50 SF	514	6734.65 SF	534	6314.00 SF	554	6000.01 SF	574	6340.21 SF	594	6362.89 SF
475	6670.00 SF	495	6887.51 SF	515	6437.50 SF	535	6314.00 SF	555	5999.98 SF	575	6414.48 SF	595	6387.50 SF
476	6670.00 SF	496	6566.01 SF	516	6583.00 SF	536	6314.00 SF	556	6000.00 SF	576	6414.48 SF	596	6229.00 SF
477	6670.00 SF	497	6566.02 SF	517	6583.00 SF	537	6302.85 SF	557	6000.02 SF	577	6340.21 SF	597	6229.56 SF
478	6670.00 SF	498	6566.03 SF	518	6583.00 SF	538	6275.00 SF	558	6000.00 SF	578	6340.21 SF	598	6387.50 SF
479	6670.00 SF	499	6566.03 SF	519	6583.00 SF	539	6000.00 SF	559	6000.00 SF	579	6340.21 SF	599	6387.50 SF
480	6663.00 SF	500	6566.04 SF	520	6583.00 SF	540	6000.00 SF	560	6000.00 SF	580	6340.21 SF	600	6227.11 SF
481	6137.50 SF	501	6566.05 SF	521	6583.00 SF	541	6000.00 SF	561	6322.43 SF	581	6340.21 SF	601	6229.00 SF
482	5937.50 SF	502	6566.18 SF	522	6585.00 SF	542	6000.01 SF	562	6414.48 SF	582	6340.21 SF	602	6387.50 SF
483	6293.00 SF	503	6888.20 SF	523	6437.50 SF	543	6000.00 SF	563	6340.21 SF	583	6340.21 SF	603	6387.50 SF
484	6293.00 SF	504	8176.83 SF	524	6275.00 SF	544	6000.00 SF	564	6340.21 SF	584	6340.21 SF	604	6229.00 SF
485	6293.00 SF	505	5997.20 SF	525	6314.00 SF	545	6000.00 SF	565	6340.21 SF	585	6340.21 SF	605	6225.47 SF
486	6293.00 SF	506	5997.19 SF	526	6314.00 SF	546	6000.00 SF	566	6340.21 SF	586	6340.21 SF	606	6387.50 SF
487	6294.55 SF	507	5997.19 SF	527	6314.00 SF	547	6000.00 SF	567	6340.21 SF	587	6340.21 SF		
488	6673.86 SF	508	5997.19 SF	528	6314.00 SF	548	6000.00 SF	568	6340.21 SF	588	6340.21 SF		
489	9831.07 SF	509	5997.18 SF	529	6314.00 SF	549	6387.50 SF	569	6340.21 SF	589	6320.78 SF		
490	9831.82 SF	510	5997.18 SF	530	6314.00 SF	550	6387.50 SF	570	6340.21 SF	590	6414.48 SF		
491	6631.43 SF	511	5997.18 SF	531	6314.00 SF	551	6000.00 SF	571	6340.21 SF	591	6362.91 SF		
492	6000.00 SF	512	5997.18 SF	532	6314.00 SF	552	6000.00 SF	572	6340.21 SF	592	6207.61 SF		



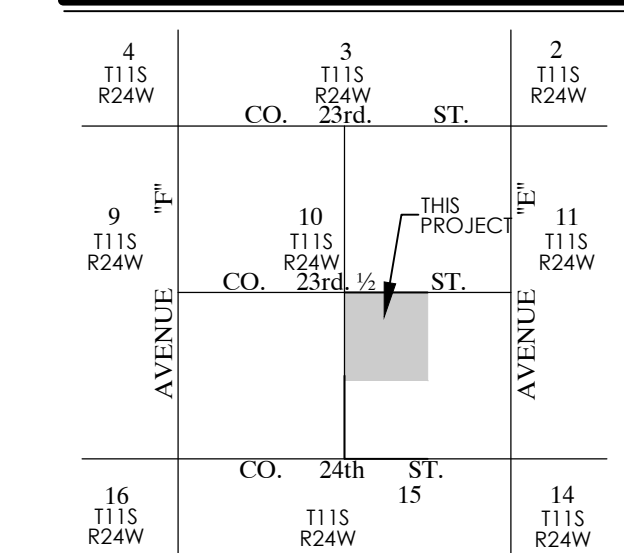
SCALE: 1" = 100'

LEGEND

- CENTERLINE
- RIGHT-OF-WAY (ROW) LINE
- NEW PROPERTY LINE
- EASEMENT (TYPE AS NOTED)
- BOUNDARY LINE
- NEW STREET MONUMENT AS PER YUMA COUNTY STD. DETAIL No. 4-080
- NEW SUBDIVISION BOUNDARY MONUMENT AS PER YUMA COUNTY STD. DETAIL No. 04-030
- EXISTING MONUMENT (TYPE AS SHOWN)
- ① NEW LOT NUMBER
- ④ EXISTING LOT NUMBER
- A.P.N. ASSESSOR PARCEL NUMBER
- B.C. BRASS CAP
- H.H. HAND HOLE
- (M) MEASURED DATA
- (R1) REFERS TO BORDER RANCHES SUBDIVISION RECORDED IN BOOK 27 OF PLATS, PAGE 9 YUMA COUNTY RECORDS
- (I1) DATA REFER TO GENERAL LAND OFFICE PLAT OF SECTION 10, T11S, R24, OFFICIALLY FILED ON 3-12-1922, YUMA COUNTY RECORDS, YUMA COUNTY, AZ. YUMA COUNTY RECORDS
- Y.C.R. YUMA COUNTY RECORDS
- G.&S.R.B.&M. GILA AND SALT RIVER BASE AND MERIDIAN



LOCATION MAP



TRACT AREAS OWNER

TRACT	AREA	OWNER
"A"	1.91 ACRES	RIEDEL HOLDINGS, LLC P.O. BOX 1649 SAN LUIS, AZ 85349 (928) 627-8593
"B"	7.99 ACRES	
"C"	7.99 ACRES	

BASIS OF BEARING

THE WEST LINE OF THE SW 1/4 OF SECTION 10, T11S, R24W, G.&S.R.B.&M., YUMA COUNTY, ARIZONA (BEING THE CENTERLINE OF AVENUE "T"), AS SHOWN ON BORDER RANCHES SUBDIVISION, AS RECORDED IN BOOK 27 OF PLATS, PAGES 9&10, YUMA COUNTY RECORDERS OFFICE, YUMA COUNTY, ARIZONA, NAMELY BEARING N00°02'42"W

SURVEYOR'S CERTIFICATE

I HEREBY CERTIFY THAT I AM A LAND SURVEYOR LISTED ON THE ROSTER OF ACTIVE REGISTRANTS BY THE STATE BOARD OF TECHNICAL REGISTRATION OF ARIZONA AND THAT THIS MAP CONSISTING OF ONE (1) SHEET CORRECTLY REPRESENTS A SURVEY MADE UNDER MY SUPERVISION, THAT ALL MONUMENTS SHOWN HEREON ACTUALLY EXIST AND THEIR POSITIONS ARE CORRECTLY SHOWN.

PREPARED BY:

Edais
Engineering, Inc.
3075 S. AVENUE 4 E
YUMA, ARIZONA 85365
(928) 344-3566

**PRELIMINARY
NOT FOR
CONSTRUCTION**