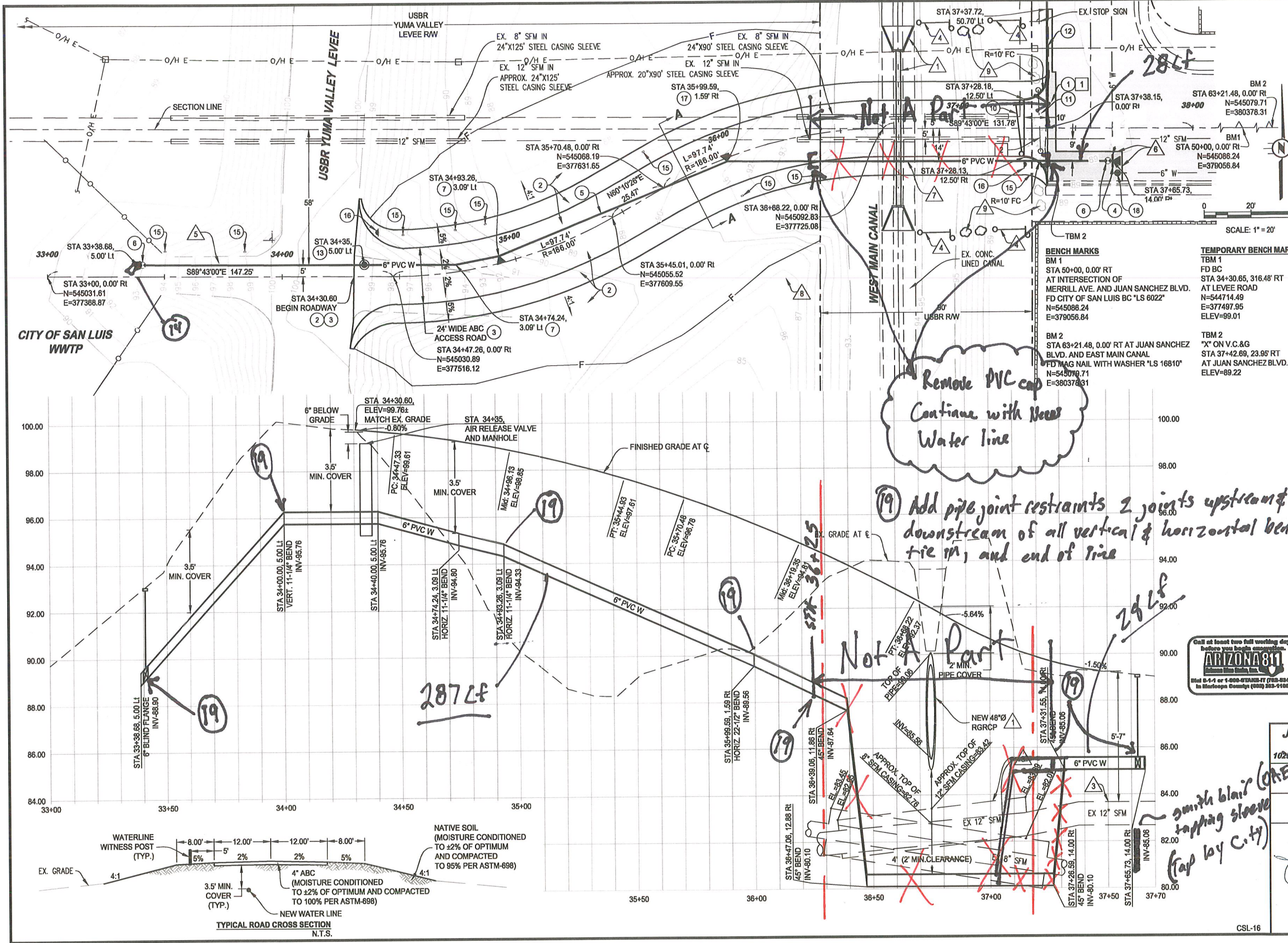


Quoted



REMOVAL NOTES		U/M	QTY
1	REMOVE EXISTING ASPHALT (ANY THICKNESS)	SY	64
2	REMOVE AND SALVAGE EXISTING ACCESS GATE	LS	1
3	REMOVE EXISTING 6" PVC	LF	6
CONSTRUCTION NOTES		U/M	QTY
1	PAVEMENT REPAIR, 3" AC (1/2" MAG MIX) / 8" ABC	SY	62
2	ROADWAY EARTHWORK AND GRADING	LS	1
3	4" ABC	SY	813
4	6" x 6" Smith Blair Tap Sleeve	EA	1
5	6" C900 CLASS 235 PVC WATERMAIN	LF	425
6	8" RW GATE VALVE WITH ANCHOR (CITY OF YUMA STD. 5-110)	EA	2
7	8" 11-1/4" ELBOW WITH THRUST BLOCK (CITY OF YUMA STD. 5-090, 5-100)	EA	2
8	8" x 6" TEE WITH THRUST BLOCK (CITY OF YUMA STD. 5-090, 5-100)	EA	1
9	6" BLIND FLANGE	EA	1
10	20" ACCESS GATE (CITY OF YUMA STD. 3-031)	EA	1
11	DRIVEWAY ENTRANCE WITH CURB RETURNS (CITY OF YUMA STD. 3-225)	SF	300
12	VERTICAL CURB (CITY OF YUMA STD. 3-150)	LF	29
13	AIR RELEASE VALVE AND MANHOLE (CITY OF YUMA STD. 5-142)	EA	1
14	8" 45° ELBOW WITH THRUST BLOCK (CITY OF YUMA STD. 5-090, 5-100)	EA	4
15	UTILITY FIBERGLASS WITNESS POST, BLUE WITH WATERLINE DECAL	EA	9
16	STOP SIGN WITH POST (R1-1 30"x30", CITY OF YUMA STD. 8-020)	EA	2
17	8" 22-1/2" ELBOW WITH THRUST BLOCK (CITY OF YUMA STD. 5-090, 5-100)	EA	1
18	ADJUST EXISTING WATER VALVE TO FINISHED GRADE WITH NEW FRAME AND COVER (CITY OF YUMA STD. 5-210)	EA	1

GENERAL NOTES

- THE NEW 48" RGRCP (CLASS V PIPE) SIPHON AND HEADWALLS ARE SHOWN SCHEMATICALLY ON THE PLANS. THE NEW SIPHON WILL BE CONSTRUCTED BY AND PER YCWUA APPROVED SIPHON DESIGN PLANS PRIOR TO THE ROADWAY CONSTRUCTION.
- JOINT DEFLECTION: DO NOT DEFLECT JOINTS MORE THAN 1/2" PER JOINT (2" PER 20' JOINT). FOR TOTAL DEFLECTIONS GREATER THAN 1/2" DEFLECT MULTIPLE JOINTS TO ACHIEVE REQUIRED DEFLECTION (TYP.).
- EX. 8" AND 12" SEWER FORCEMAINS SHOWN PER RECORD DRAWINGS AND POTHOLED INFORMATION PROVIDED BY THE CITY OF SAN LUIS.
- ACCESS GATES TO BE INSTALLED ALONG THE WEST MAIN CANAL EAST O&M ROAD BY YCWUA DURING THE SIPHON CONSTRUCTION. SEE YCWUA GATE DETAIL.
- AFTER THE WATERLINE CONSTRUCTION, THE CONTRACTOR SHALL REGRADE THE LEVEE ROAD TO MATCH THE EXISTING CONDITIONS.
- ATTENTION: THE EXISTING BANKLINE ARMORING RIPRAP REMOVED DURING THE WATERLINE CONSTRUCTION SHALL BE RECYCLED. ONCE THE WATERLINE HAS BEEN INSTALLED, THE WEST SIDE OF THE LEVEE SHALL BE ARMOR WITH THE RECYCLED RIPRAP TO A MINIMUM OF 3" THICK.
- SAWCUT AND MATCH THE EXISTING PAVEMENT (TYP.).
- THE WATERLINE FROM STA. 36+50 TO STA. 37+00 WILL BE INSTALLED BY THE CITY DURING THE SIPHON CONSTRUCTION.
- PROTECT IN PLACE EXISTING MONITORING WELL (APPROXIMATE LOCATION).
- EXISTING BOULDERS ONSITE TO BE RELOCATED BETWEEN THE GATES (42' APART TYP.) BY THE CITY.

JAMES DAVEY AND ASSOCIATES
CONSULTING CIVIL ENGINEERS
1026 W. 24th Street, Ste. #2 - YUMA, AZ 85364 - (928) 782-7926

JUAN SANCHEZ BOULEVARD
EXTENSION TO LEVEE
PLAN AND PROFILE
BEGIN PROJECT TO STA 37+50

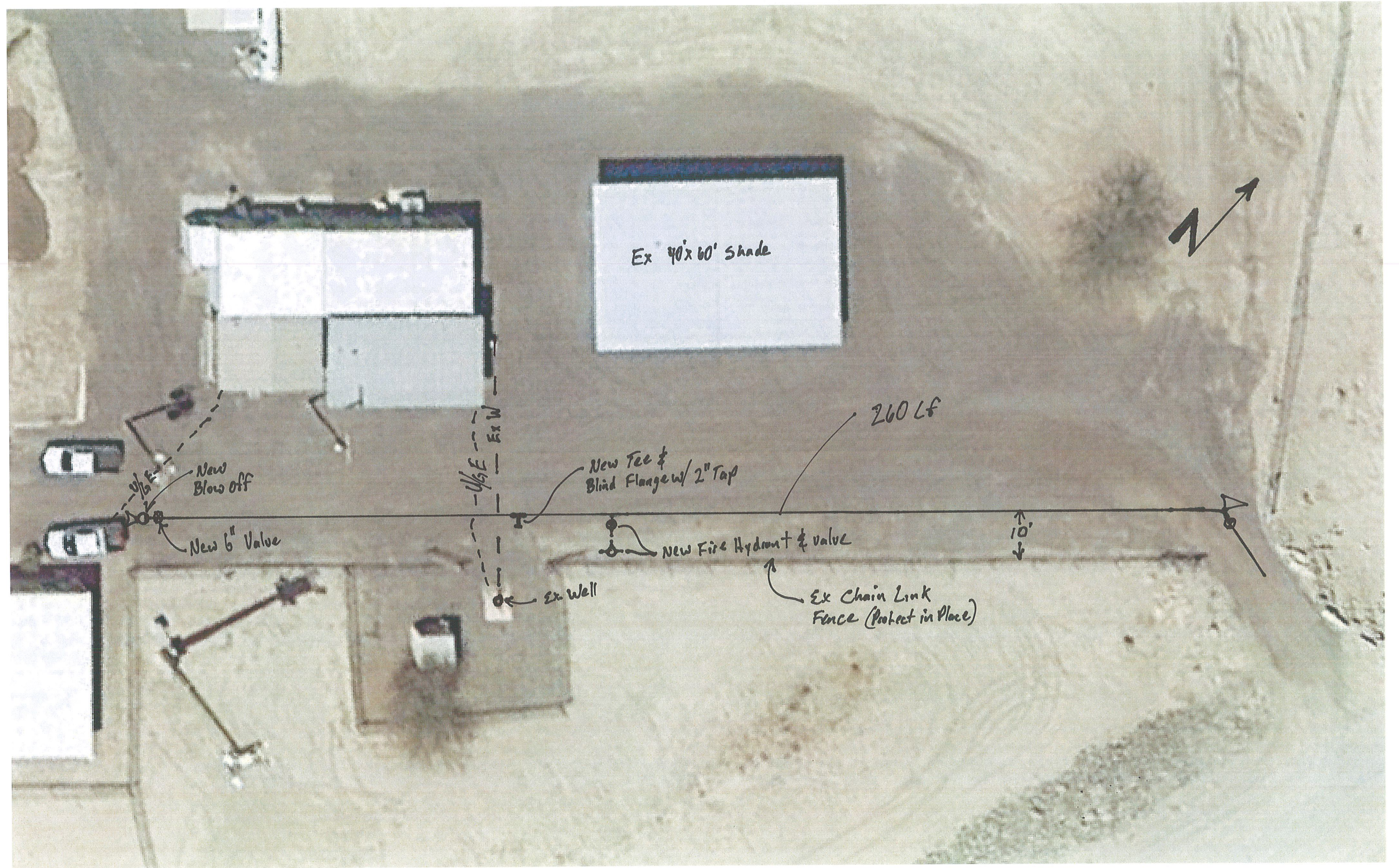
PREPARED FOR:
CITY OF SAN LUIS
COMMUNITY DEVELOPMENT
SAN LUIS, AZ 85349
(928) 341-8584

DESIGNED BY: T.S.
DRAWN BY: O.J.Z.
APPROVED BY: J.V.D.

SHEET P-1
APRIL 23, 2018



Elera 3/29/19



Ex 40'x60' shade



260 LF

New Tee & Blind Flange w/ 2" Tap

New Fire Hydrant & valve

Ex Chain Link Fence (Protect in Place)

Ex Well

New Blow Off

New 6" Valve

10'

1/2" E
Ex W

