

LOCATION OF SUBJECT PROPERTIES

Location Map MAJOR AMENDMENT

Assessor's Parcel No. 227-14-001, 227-14-002, 227-14-004, 227-14-005, 227-14-005, 227-14-006, 227-14-007, 227-14-008.

LAND USE
 Business
 Industrial

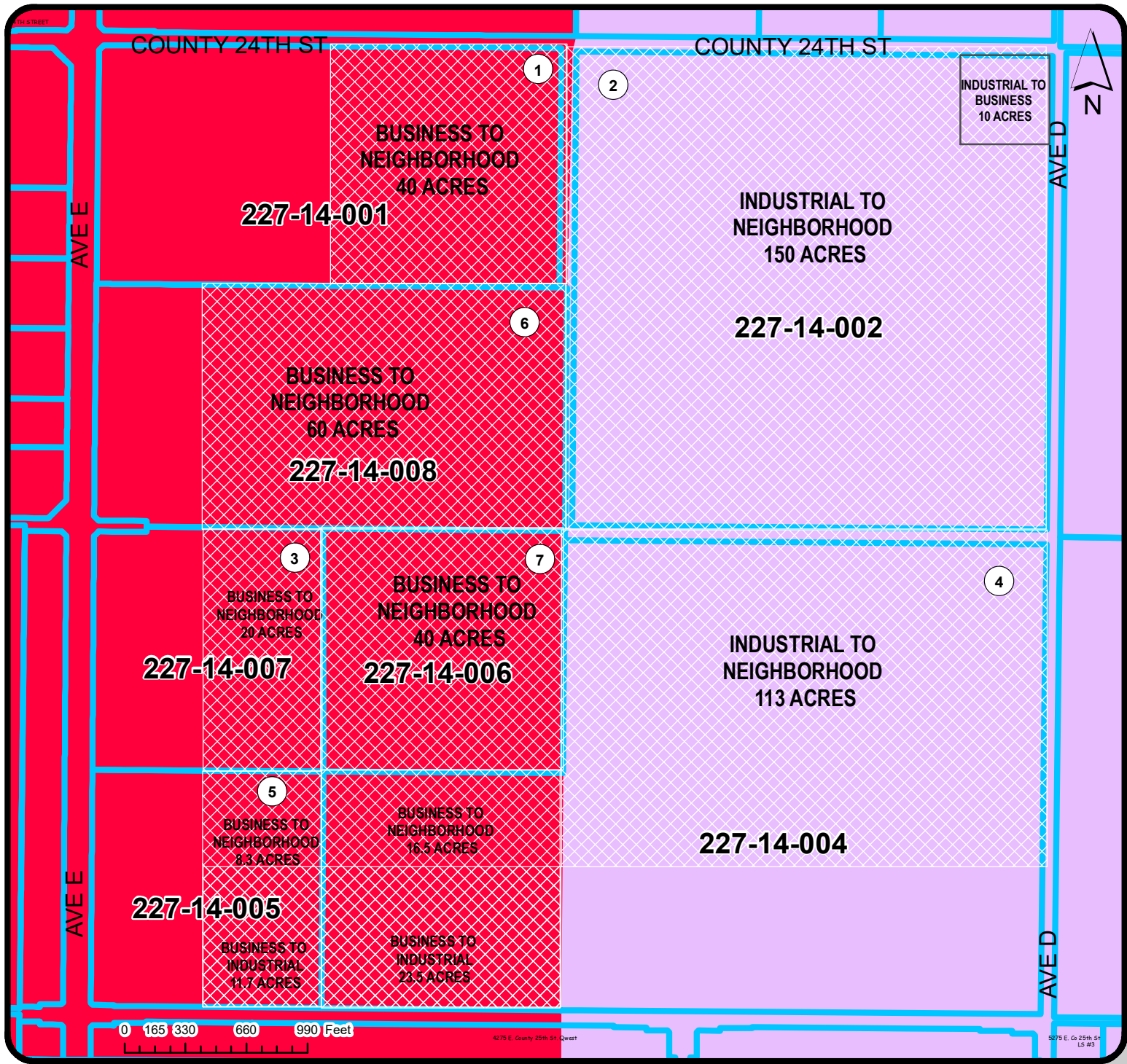
Date:
7/7/2019



Prepared By:
ISAAC GUTIERREZ

APPROVED BY:
JOSE A. GUZMAN



Case No.
2019-0396

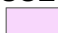



LOCATION OF SUBJECT PROPERTIES

Location Map

MAJOR AMENDMENT

 Assessor's Parcel No. 227-14-001, 227-14-002, 227-14-004, 227-14-005, 227-14-006, 227-14-007, 227-14-008.
 PARCEL

LAND USE
 INDUSTRIAL
 BUSINESS

Date:

10/7/2019

PLANNING & ZONING



Prepared By:

ISAAC GUTIERREZ

Case No.

2019-0396

Checked By:

ROMAN PACHECO

APPROVED BY:

JOSE A. GUZMAN