

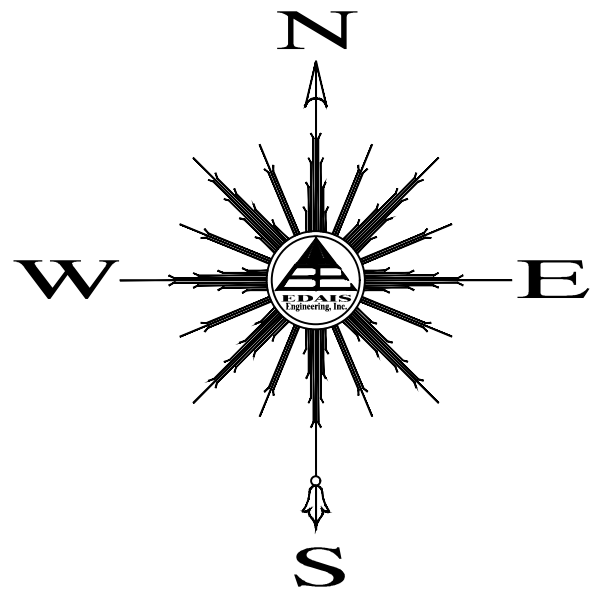
# SANTA CECILIA No. 3 SUBDIVISION

LOT 3 OF BORDER RANCHES SUBDIVISION AS RECORDED IN BOOK 27 OF PLATS, PAGES 9-10,  
YUMA COUNTY RECORDERS OFFICE, YUMA COUNTY, ARIZONA

DATE OF PREPARATION: AUGUST 2018

NUMBER OF LOTS: 141

ACREAGE: 30.30 ACRES



SCALE: 1" = 100'

### LINE DATA

LINE	LENGTH	BEARING
L1	21.22	N45°01'59"W
L2	21.20	N44°58'01"E
L3	21.20	S44°58'01"W
L4	21.22	N45°02'15"W
L5	21.20	N44°57'45"E

### CURVE DATA

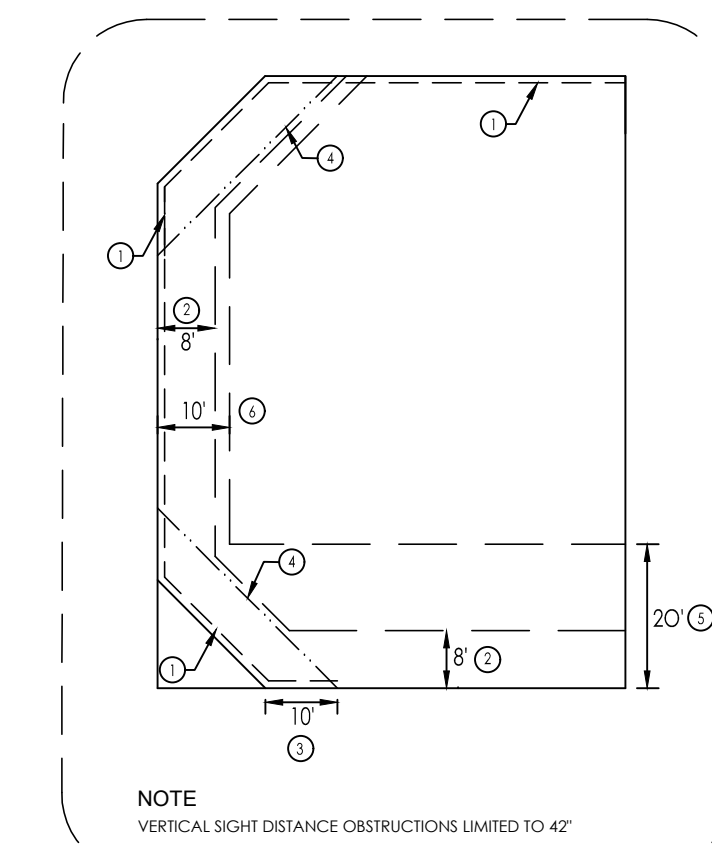
CURVE	DELTA	CHORD DIRECTION	CHORD	TANGENT	RADIUS	LENGTH
C1	243°13'39"	N58°19'51"E	94.53'	-90.17'	55.50'	235.60'
C2	243°13'39"	N58°19'51"E	94.53'	-90.17'	55.50'	235.60'
C3	063°13'39"	S31°40'09"E	58.19'	34.16'	55.50'	61.25'

### AREAS

LOT	AREA	LOT	AREA	LOT	AREA	LOT	AREA	LOT	AREA	LOT	AREA	LOT	AREA	LOT	AREA
332	6275.00 SF	351	9196.90 SF	370	6325.11 SF	388	6253.39 SF	406	6253.39 SF	424	6253.39 SF	442	6253.39 SF	460	6267.32 SF
333	6491.98 SF	352	8413.15 SF	371	6256.36 SF	389	6253.39 SF	407	6253.39 SF	425	6253.39 SF	443	6253.39 SF	461	6475.01 SF
334	6484.00 SF	353	8413.03 SF	372	6253.39 SF	390	6253.39 SF	408	6253.39 SF	426	6253.39 SF	444	6325.10 SF	462	6478.72 SF
335	6484.00 SF	355	6325.10 SF	373	6253.39 SF	391	6253.39 SF	409	6253.39 SF	427	6253.39 SF	445	6215.19 SF	463	6479.41 SF
336	6484.00 SF	356	6253.39 SF	374	6253.39 SF	392	6253.39 SF	410	6253.39 SF	428	6256.36 SF	446	6255.90 SF	464	6480.09 SF
337	6484.00 SF	357	6253.39 SF	375	6253.39 SF	393	6253.39 SF	411	6253.39 SF	429	6325.10 SF	447	6255.90 SF	465	6480.78 SF
338	6484.00 SF	358	6253.39 SF	376	6253.39 SF	394	6253.39 SF	412	6253.39 SF	430	6325.10 SF	448	6255.90 SF	466	6481.47 SF
339	6484.00 SF	359	6253.39 SF	377	6253.39 SF	395	6253.39 SF	413	6253.39 SF	431	6256.36 SF	449	6255.90 SF	467	6482.16 SF
340	6484.00 SF	360	6253.39 SF	378	6253.39 SF	396	6253.39 SF	414	6325.10 SF	432	6253.39 SF	450	6255.90 SF	468	6482.85 SF
341	6484.00 SF	361	6253.39 SF	379	6253.39 SF	397	6253.39 SF	415	6325.10 SF	433	6253.39 SF	451	6255.90 SF	469	6483.54 SF
342	6484.00 SF	362	6253.39 SF	380	6253.39 SF	398	6256.36 SF	416	6253.39 SF	434	6253.39 SF	452	6255.90 SF	470	6484.22 SF
343	6484.00 SF	363	6253.38 SF	381	6253.39 SF	399	6323.09 SF	417	6253.39 SF	435	6253.39 SF	453	6255.90 SF	471	6484.91 SF
344	6275.00 SF	364	6253.38 SF	382	6253.39 SF	400	6324.50 SF	418	6253.39 SF	436	6253.39 SF	454	6255.90 SF	472	6275.60 SF
345	6275.00 SF	365	6253.38 SF	383	6253.39 SF	401	6256.36 SF	419	6253.39 SF	437	6253.39 SF	455	6255.90 SF		
346	6000.00 SF	366	6253.38 SF	384	6325.10 SF	402	6253.39 SF	420	6253.39 SF	438	6253.39 SF	456	6255.90 SF		
347	6000.00 SF	367	6253.38 SF	385	6325.10 SF	403	6253.39 SF	421	6253.39 SF	439	6253.39 SF	457	6255.90 SF		
348	6000.00 SF	368	6256.35 SF	386	6253.39 SF	404	6253.39 SF	422	6253.39 SF	440	6253.39 SF	458	6258.87 SF		
349	10866.16 SF	369	6325.10 SF	387	6253.39 SF	405	6253.39 SF	423	6253.39 SF	441	6253.39 SF	459	6215.19 SF		

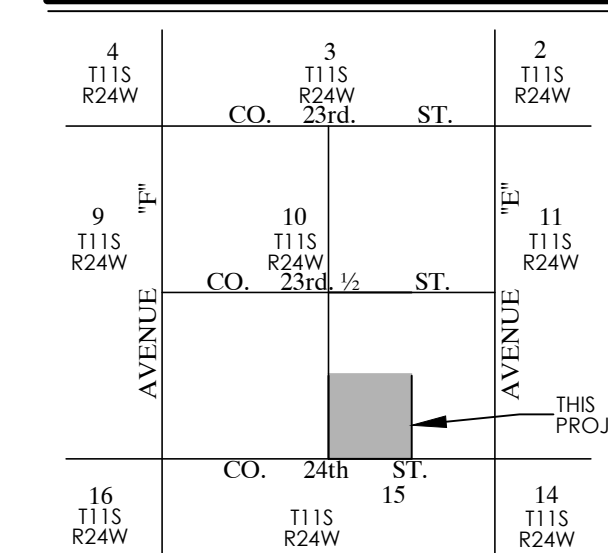
### LEGEND

- CENTERLINE
- RIGHT-OF-WAY (ROW) LINE
- NEW PROPERTY LINE
- EASEMENT (TYPE AS NOTED)
- BOUNDARY LINE
- NEW STREET MONUMENT AS PER YUMA COUNTY STD. DETAIL NO. 4-080
- NEW SUBDIVISION BOUNDARY MONUMENT AS PER YUMA COUNTY STD. DETAIL NO. 04-030
- EXISTING MONUMENT (TYPE AS SHOWN)
- ① NEW LOT NUMBER
- ④ EXISTING LOT NUMBER
- A.P.N. ASSESSOR PARCEL NUMBER
- B.C. BRASS CAP
- H.H. HAND HOLE
- Y.C.R. YUMA COUNTY RECORDS
- G. & S.R.B. & M. GILA AND SALT RIVER BASE AND MERIDIAN



TYPICAL CORNER LOT DETAIL

### LOCATION MAP



### TRACT AREAS OWNER

TRACT	AREA
"A"	1.52 ACRES

**R&G ASSOCIATES LLC.**  
P.O. BOX 1649  
SAN LUIS, AZ 85349  
(928) 627-9385

### BASIS OF BEARING

THE WEST LINE OF THE SW 1/4 OF SECTION 10, T11S, R24W, G.S.R.B.&M., YUMA COUNTY, ARIZONA (BEING THE CENTERLINE OF AVENUE "F"), AS SHOWN ON BORDER RANCHES SUBDIVISION, AS RECORDED IN BOOK 27 OF PLATS, PAGES 9&10, YUMA COUNTY RECORDERS OFFICE, YUMA COUNTY, ARIZONA, NAMELY BEARING N00°02'42"W

### SURVEYOR'S CERTIFICATE

I HEREBY CERTIFY THAT I AM A LAND SURVEYOR LISTED ON THE ROSTER OF ACTIVE REGISTRANTS BY THE STATE BOARD OF TECHNICAL REGISTRATION OF ARIZONA AND THAT THIS MAP CONSISTING OF ONE (1) SHEET CORRECTLY REPRESENTS A SURVEY MADE UNDER MY SUPERVISION, THAT ALL MONUMENTS SHOWN HEREON ACTUALLY EXIST AND THEIR POSITIONS ARE CORRECTLY SHOWN.

### PREPARED BY:

**Edais Engineering, Inc.**  
3075 S. AVENUE 4 E  
YUMA, ARIZONA 85365  
(928) 344-3566

**PRELIMINARY  
NOT FOR  
CONSTRUCTION**