

SANTA CECILIA No. 4 SUBDIVISION

LOT 3 OF BORDER RANCHES SUBDIVISION AS RECORDED IN BOOK 27 OF PLATS, PAGES 9-10,
YUMA COUNTY RECORDERS OFFICE, YUMA COUNTY, ARIZONA

DATE OF PREPARATION: AUGUST 2018 NUMBER OF LOTS: 134 ACREAGE: 36.76 ACRES

PRELIMINARY PLAT

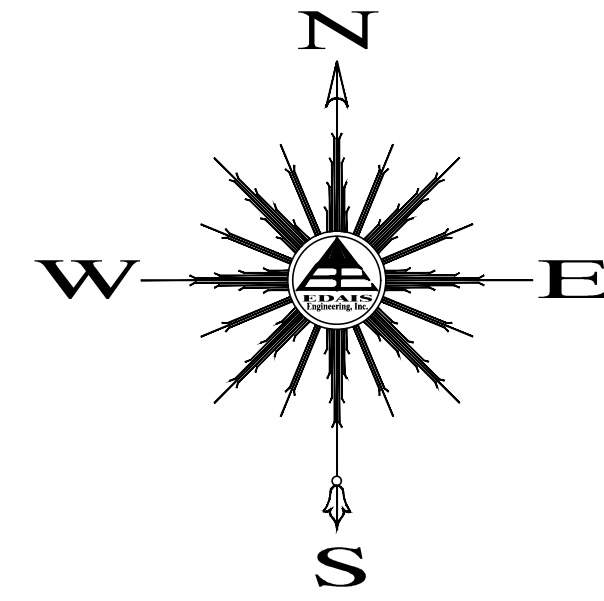
A.P.N. 227-10-001
STATE OF ARIZONA
(UNDEVELOPED LAND)
ZONING: R1-40

CURVE DATA

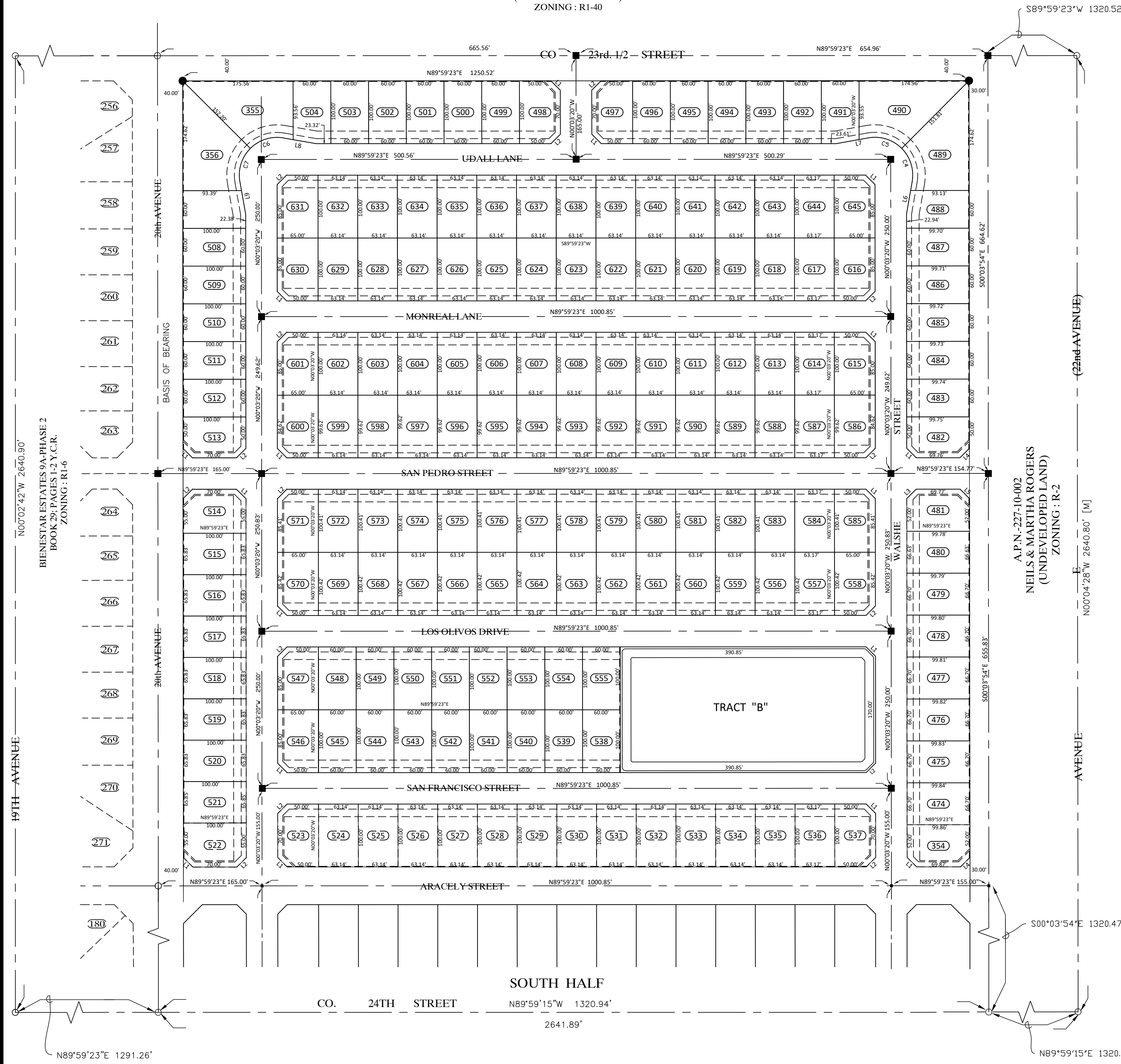
CURVE	DELTA	CHORD	DIRECTION	TANGENT	RADIUS	LENGTH
C4	110°02'43"	N45°01'59"W	98.33'	85.76'	60.00'	115.24'
C5	110°02'43"	N45°01'59"W	98.33'	85.76'	60.00'	115.24'
C6	054°58'01"	S72°29'01"W	55.36'	31.20'	59.98'	57.55'
C7	055°01'59"	S17°29'01"W	55.43'	31.25'	59.98'	57.61'

LINE DATA

LINE	LENGTH	BEARING
L1	21.22'	N45°01'59"W
L2	21.20'	N44°58'01"E
L3	21.22'	N45°02'15"W
L4	21.20'	N44°57'45"E
L5	21.22'	S45°02'15"W



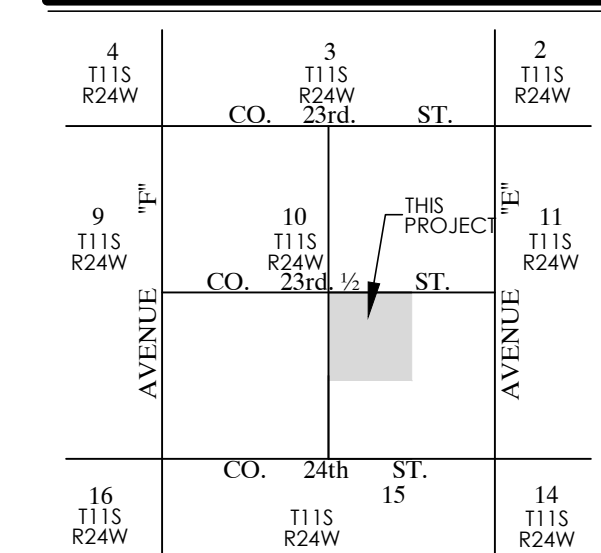
SCALE: 1" = 100'



AREAS

LOT	AREA	LOT	AREA	LOT	AREA	LOT	AREA	LOT	AREA	LOT	AREA	LOT	AREA	LOT	AREA	LOT	AREA	LOT	AREA				
474	6660.01 SF	494	6000.00 SF	517	6583.00 SF	537	6275.00 SF	557	6343.53 SF	577	6339.89 SF	597	6290.07 SF	617	6317.00 SF	637	6314.00 SF	657	6314.00 SF	677	6314.00 SF		
475	6659.29 SF	495	6000.00 SF	518	6583.00 SF	538	6000.00 SF	558	6414.80 SF	578	6339.89 SF	598	6290.07 SF	618	6314.00 SF	638	6314.00 SF	658	6314.00 SF	678	6314.00 SF	698	6314.00 SF
476	6658.56 SF	496	6000.00 SF	519	6583.00 SF	539	6000.01 SF	559	6340.52 SF	579	6339.89 SF	599	6290.06 SF	619	6314.00 SF	639	6314.00 SF	659	6314.00 SF	679	6314.00 SF	699	6314.00 SF
477	6657.83 SF	497	6275.00 SF	520	6583.00 SF	540	6000.00 SF	560	6340.52 SF	580	6339.89 SF	600	6362.86 SF	620	6314.00 SF	640	6314.00 SF	660	6314.00 SF	680	6314.00 SF	700	6314.00 SF
478	6657.10 SF	498	6275.00 SF	521	6585.00 SF	541	6000.00 SF	561	6340.52 SF	581	6339.89 SF	601	6387.50 SF	621	6314.00 SF	641	6314.00 SF	661	6314.00 SF	681	6314.00 SF	701	6314.00 SF
479	6656.37 SF	499	6000.00 SF	522	6775.00 SF	542	6000.00 SF	562	6340.52 SF	582	6339.89 SF	602	6314.00 SF	622	6314.00 SF	642	6314.00 SF	662	6314.00 SF	682	6314.00 SF	702	6314.00 SF
480	6648.66 SF	500	6000.00 SF	523	6275.00 SF	543	6000.00 SF	563	6340.52 SF	583	6339.89 SF	603	6314.00 SF	623	6314.00 SF	643	6314.00 SF	663	6314.00 SF	683	6314.00 SF	703	6314.00 SF
481	6459.85 SF	501	6000.00 SF	524	6314.00 SF	544	6000.00 SF	564	6340.52 SF	584	6342.90 SF	604	6314.00 SF	624	6314.00 SF	644	6314.00 SF	664	6314.00 SF	684	6314.00 SF	704	6314.00 SF
482	6259.07 SF	502	6000.00 SF	525	6314.00 SF	545	6000.00 SF	565	6340.52 SF	585	6414.15 SF	605	6314.00 SF	625	6314.00 SF	645	6314.00 SF	665	6314.00 SF	685	6314.00 SF	705	6314.00 SF
483	5984.68 SF	503	6000.00 SF	526	6314.00 SF	546	6387.50 SF	566	6340.52 SF	586	6362.90 SF	606	6314.00 SF	626	6314.00 SF	646	6314.00 SF	666	6314.00 SF	686	6314.00 SF	706	6314.00 SF
484	5984.09 SF	504	5881.88 SF	527	6314.00 SF	547	6387.50 SF	567	6340.52 SF	587	6293.09 SF	607	6314.00 SF	627	6314.00 SF	647	6314.00 SF	667	6314.00 SF	687	6314.00 SF	707	6314.00 SF
485	5983.50 SF	505	6000.00 SF	528	6314.00 SF	548	6000.00 SF	568	6340.52 SF	588	6290.10 SF	608	6314.00 SF	628	6314.00 SF	648	6314.00 SF	668	6314.00 SF	688	6314.00 SF	708	6314.00 SF
486	5982.91 SF	506	6000.00 SF	529	6314.00 SF	549	6000.00 SF	569	6340.52 SF	589	6290.10 SF	609	6314.00 SF	629	6314.00 SF	649	6314.00 SF	669	6314.00 SF	689	6314.00 SF	709	6314.00 SF
487	5982.32 SF	507	6000.00 SF	530	6314.00 SF	550	6000.00 SF	570	6414.80 SF	590	6290.09 SF	610	6314.00 SF	630	6387.50 SF	650	6314.00 SF	670	6314.00 SF	690	6314.00 SF	710	6314.00 SF
488	5860.07 SF	511	6000.00 SF	531	6314.00 SF	551	6000.00 SF	571	6414.15 SF	591	6290.09 SF	611	6314.00 SF	631	6314.00 SF	651	6314.00 SF	671	6314.00 SF	691	6314.00 SF	711	6314.00 SF
489	12047.48 SF	512	6000.00 SF	532	6314.00 SF	552	6000.00 SF	572	6339.89 SF	592	6290.09 SF	612	6314.00 SF	632	6314.00 SF	652	6314.00 SF	672	6314.00 SF	692	6314.00 SF	712	6314.00 SF
490	12130.18 SF	513	6275.00 SF	533	6314.00 SF	553	5999.99 SF	573	6339.89 SF	593	6290.08 SF	613	6314.00 SF	633	6314.00 SF	653	6314.00 SF	673	6314.00 SF	693	6314.00 SF	713	6314.00 SF
491	5882.72 SF	514	6775.00 SF	534	6314.00 SF	554	6000.02 SF	574	6339.89 SF	594	6290.08 SF	614	6317.00 SF	634	6314.00 SF	654	6314.00 SF	674	6314.00 SF	694	6314.00 SF	714	6314.00 SF
492	6000.00 SF	515	6583.00 SF	535	6314.00 SF	555	6000.00 SF	575	6339.89 SF	595	6290.08 SF	615	6387.50 SF	635	6314.00 SF	655	6314.00 SF	675	6314.00 SF	695	6314.00 SF	715	6314.00 SF
493	6000.00 SF	516	6583.00 SF	536	6317.00 SF	556	6340.52 SF	576	6339.89 SF	596	6290.07 SF	616	6387.50 SF	636	6314.00 SF	656	6314.00 SF	676	6314.00 SF	696	6314.00 SF	716	6314.00 SF

LOCATION MAP



TRACT AREAS OWNER

TRACT	AREA	OWNER
"B"	1.86 ACRES	RIEDEL HOLDINGS, LLC P.O. BOX 1649 SAN LUIS, AZ 85349 (928) 627-8593

BASIS OF BEARING

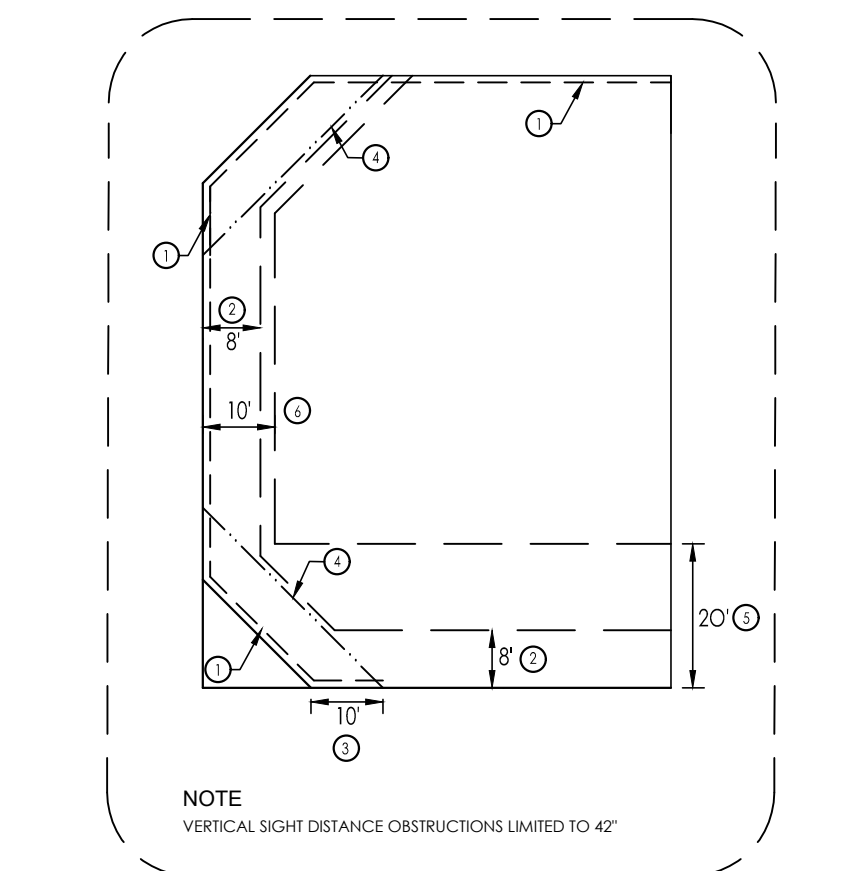
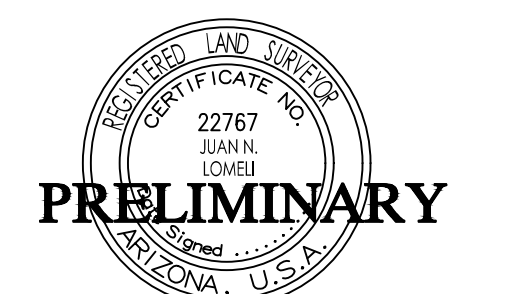
THE WEST LINE OF THE SW 1/4 OF SECTION 10, T11S, R24W, C.&S.R.B.&M., YUMA COUNTY, ARIZONA (BEING THE CENTERLINE OF AVENUE "T"), AS SHOWN ON BORDER RANCHES SUBDIVISION, AS RECORDED IN BOOK 27 OF PLATS, PAGES 9&10, YUMA COUNTY RECORDERS OFFICE, YUMA COUNTY, ARIZONA, NAMELY BEARING N00°02'42"W

SURVEYOR'S CERTIFICATE

I HEREBY CERTIFY THAT I AM A LAND SURVEYOR LISTED ON THE ROSTER OF ACTIVE REGISTRANTS BY THE STATE BOARD OF TECHNICAL REGISTRATION OF ARIZONA AND THAT THIS MAP CONSISTING OF ONE (2) SHEET CORRECTLY REPRESENTS A SURVEY MADE UNDER MY SUPERVISION, THAT ALL MONUMENTS SHOWN HEREON ACTUALLY EXIST AND THEIR POSITIONS ARE CORRECTLY SHOWN.

PREPARED BY:

Edais Engineering, Inc.
3075 S. AVENUE 4 E
YUMA, ARIZONA 85365
(928) 344-3566



TYPICAL CORNER LOT DETAIL