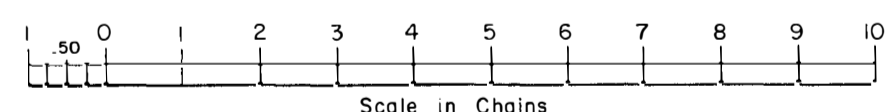
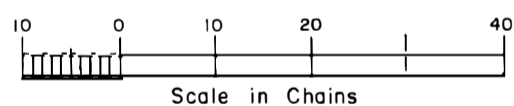
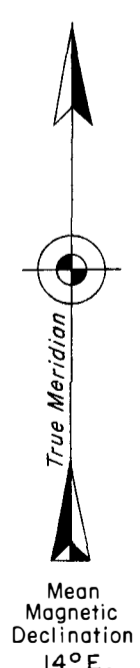
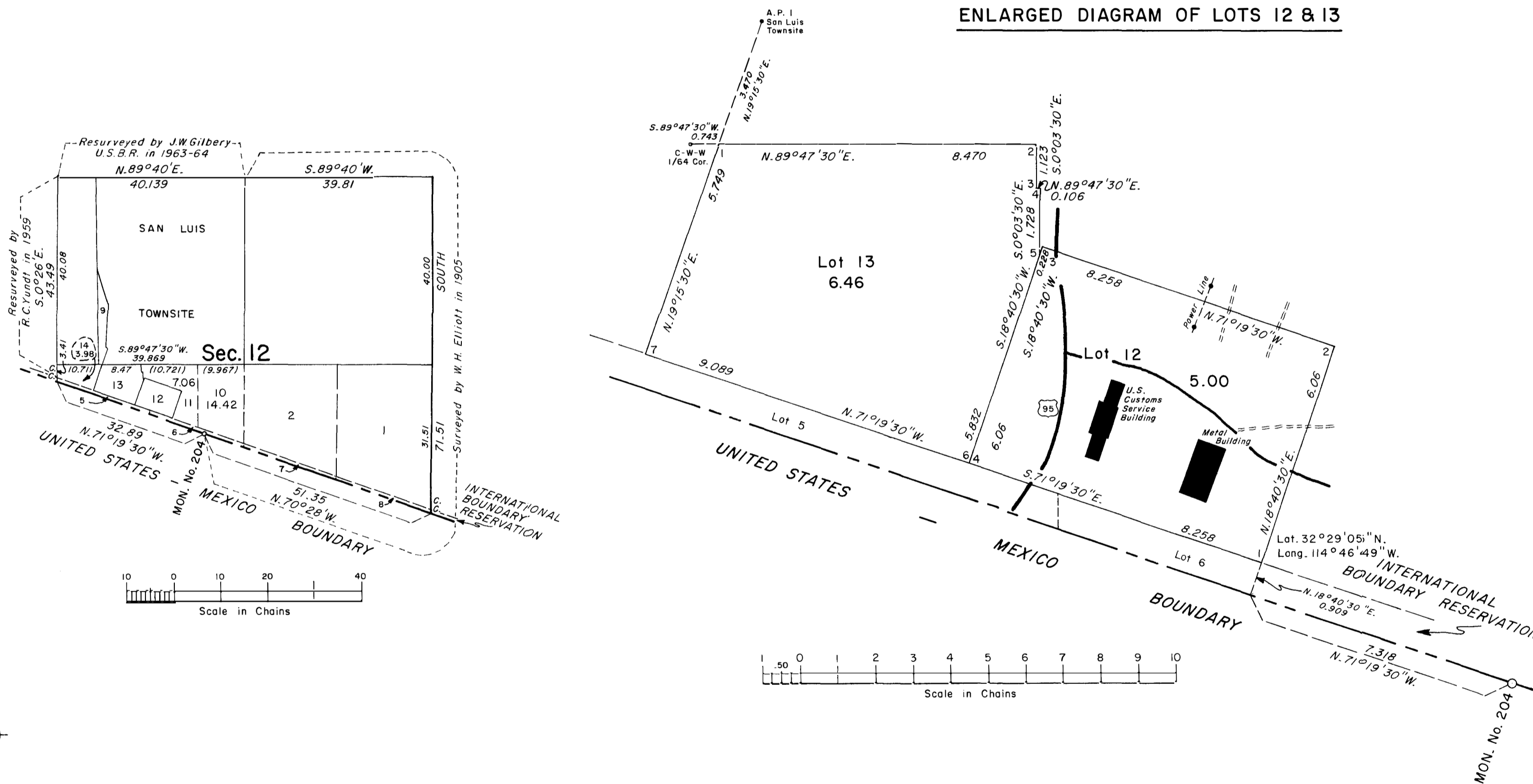


TOWNSHIP 11 SOUTH, RANGE 25 WEST, OF THE GILA AND SALT RIVER MERIDIAN, ARIZONA

METES AND BOUNDS SURVEY OF LOTS 12 & 13 IN SECTION 12

OFFICIALLY FILED NOV 8 1972

ENLARGED DIAGRAM OF LOTS 12 & 13



UNITED STATES DEPARTMENT OF THE INTERIOR
 BUREAU OF LAND MANAGEMENT
 Washington, D.C. October 12, 1972

History of earlier surveys is contained in the field notes.

This plat represents a metes and bounds survey of lots 12 and 13, section 12, T. 11 S., R. 25 W., Gila & Salt River Meridian, Arizona.

Except as indicated, the lottings and areas are as shown on the plat approved May 12, 1909 and the plat accepted January 5, 1965.

Survey executed by Paul G. Bauer, Cadastral Surveyor from March 21 to March 23, 1972, under Special Instructions dated March 17, 1972, for Group No. 546, Arizona.

This plat is strictly conformable to the approved field notes, and the survey, having been correctly executed in accordance with the requirements of law and the regulations of this Bureau, is hereby accepted.

For the Director

Clark L. Luman

Chief, Division of Cadastral Survey