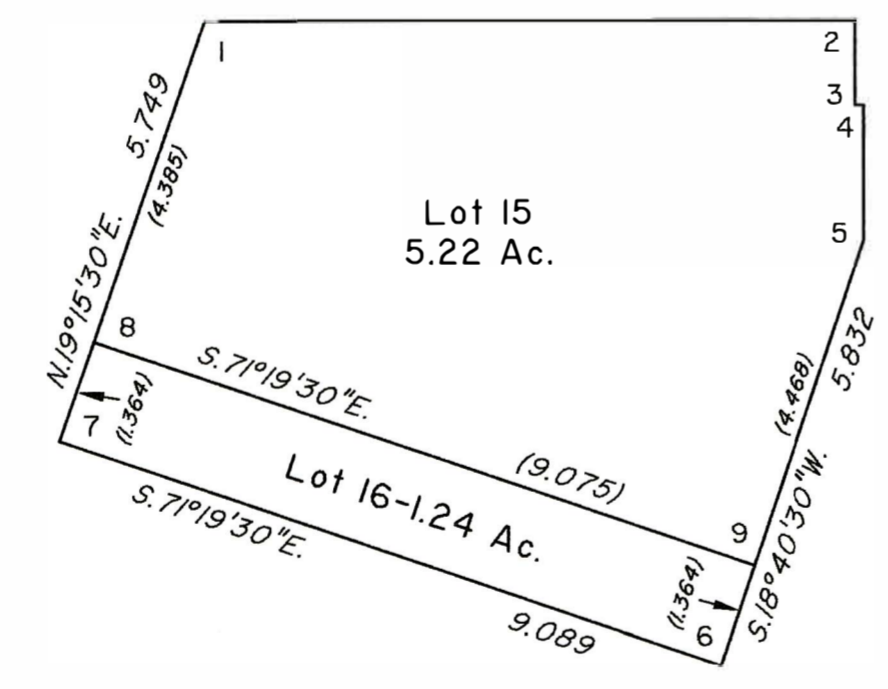
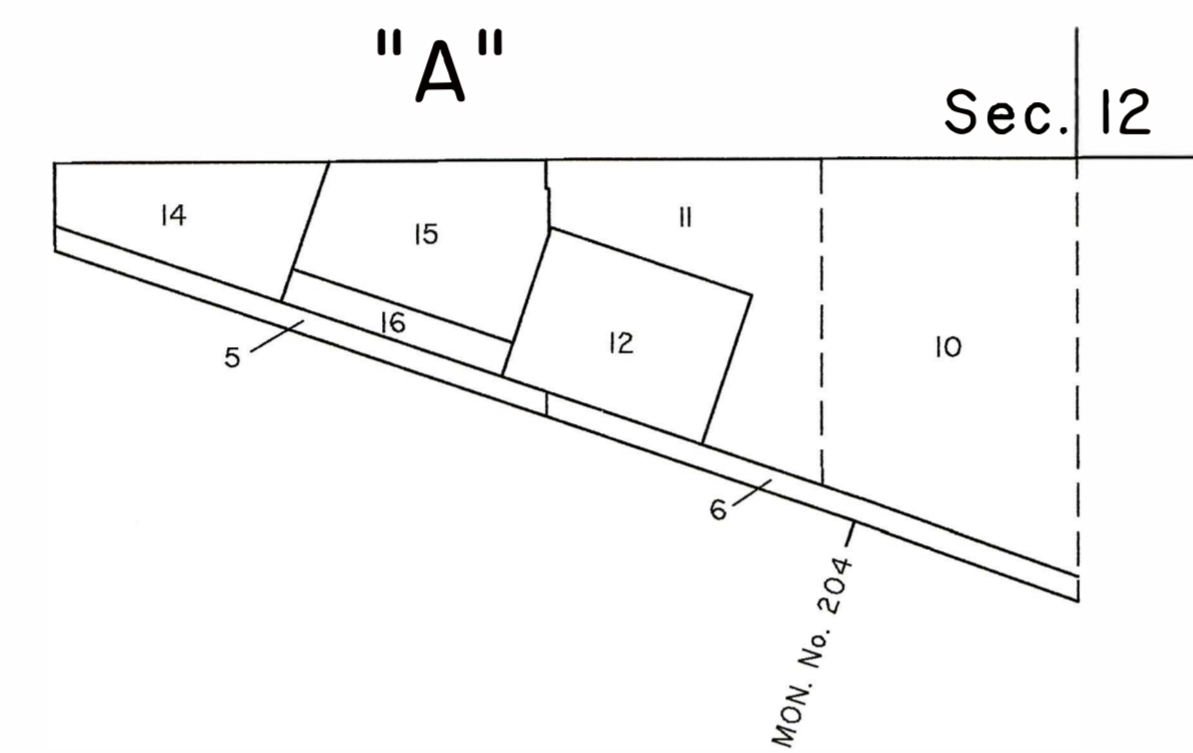


TOWNSHIP II SOUTH, RANGE 25 WEST, OF THE GILA AND SALT RIVER MERIDIAN, ARIZONA

SUPPLEMENTAL PLAT OF THE SW 1/4 SECTION 12

This supplemental plat showing amended lottings in the SW 1/4 of section 12, Group No. 9104, Township II South, Range 25 West, Gila and Salt River Meridian, Arizona, is based upon the plat accepted October 12, 1972.

Lot 16 is created to provide for a 90 foot wide strip of land along the southern edge of former lot 13 in section 12. The remainder of lot 13 is now lot 15.



DETAIL "A"
NO SCALE

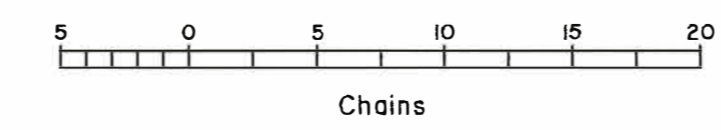
UNITED STATES DEPARTMENT OF THE INTERIOR
BUREAU OF LAND MANAGEMENT

Phoenix, Arizona March 2, 2010

This plat, showing amended lottings, is based upon the official records and, having been correctly prepared in accordance with the regulations of this Bureau, is hereby accepted.

For the Director

Stephen K. Hansen
Chief Cadastral Surveyor of Arizona



WJH