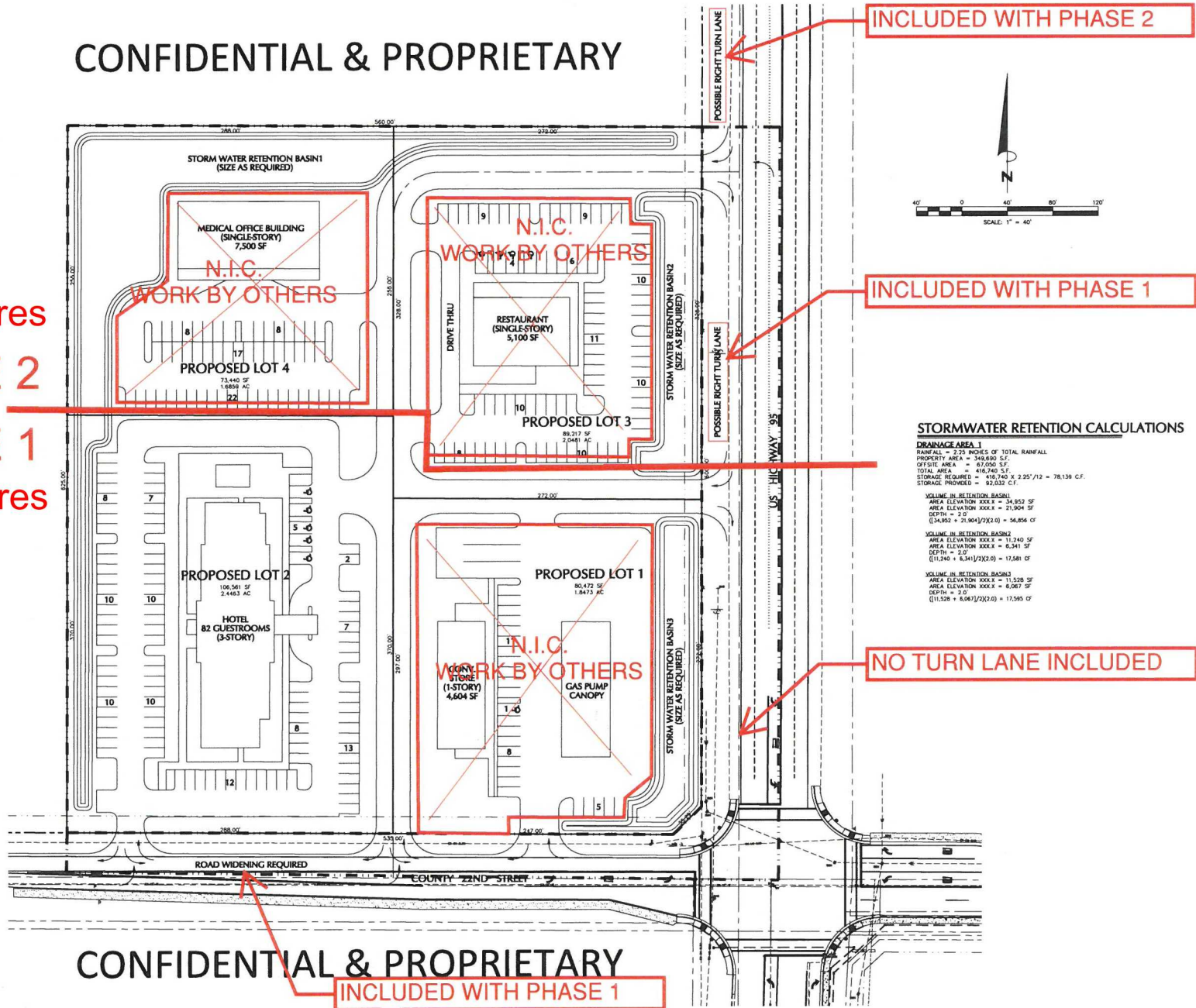


CONFIDENTIAL & PROPRIETARY

Approx 3.5 Acres
PHASE 2
PHASE 1
Approx 4.5 Acres



STORMWATER RETENTION CALCULATIONS

DRAINAGE AREA 1
 RAINFALL = 2.75 INCHES OF TOTAL RAINFALL
 PROPERTY AREA = 345,690 S.F.
 OFF-SITE AREA = 67,000 S.F.
 TOTAL AREA = 412,740 S.F.
 STORAGE REQUIRED = 412,740 X 3.25"/12" = 78,139 C.F.
 STORAGE PROVIDED = 92,032 C.F.

VOLUME IN RETENTION BASIN1
 AREA ELEVATION XXXX = 34,903 SF
 AREA ELEVATION XXXX = 31,904 SF
 DEPTH = 2.0'
 ((34,903 + 31,904)/2)(2.0) = 56,806 CF

VOLUME IN RETENTION BASIN2
 AREA ELEVATION XXXX = 11,240 SF
 AREA ELEVATION XXXX = 6,541 SF
 DEPTH = 2.0'
 ((11,240 + 6,541)/2)(2.0) = 17,581 CF

VOLUME IN RETENTION BASIN3
 AREA ELEVATION XXXX = 11,528 SF
 AREA ELEVATION XXXX = 6,067 SF
 DEPTH = 2.0'
 ((11,528 + 6,067)/2)(2.0) = 17,595 CF

CONFIDENTIAL & PROPRIETARY

INCLUDED WITH PHASE 1

DATE	
DRAWING ISSUE RECORD	

1550 S. 5th Avenue
 Phoenix, AZ 85010-1205
 Phone: (602) 814-0025
 Fax: (602) 814-0028
 www.dahlrobins.com

DAHL, ROBINS & ASSOCIATES, INC.

SAN LUIS DEVELOPMENT
 NORTHWEST CORNER OF US HWY 95 & COUNTY 22ND STREET
 SAN LUIS, ARIZONA
 PRELIMINARY SITE LAYOUT 01 - 8/26/2016

PRELIMINARY
 NOT FOR CONSTRUCTION

DATE	SEP 2016
SURVEYED BY:	N/A
DESIGNED BY:	KAD
DRAWN BY:	JDL
CHECKED BY:	KAD
PROJECT NO.:	16215
SHEET	1
OF	1