



Resolution

NO. 2199

OFFICE OF THE
MAYOR
CITY OF SAN LUIS

A RESOLUTION OF THE MAYOR AND CITY COUNCIL OF THE CITY OF SAN LUIS, ARIZONA, AMENDING THE 2040 GENERAL PLAN TO CHANGE THE LAND USE DESIGNATION OF 20.00 ACRES OF LAND LOCATED ON THE NORTHEAST CORNER OF 20TH AVENUE AND COUNTY 24-1/2 STREET FROM COMMERCIAL TO MEDIUM DENSITY RESIDENTIAL; REPEALING ANY CONFLICTING PROVISIONS; AND PROVIDING FOR SEVERABILITY

WHEREAS, City of San Luis pursuant to Resolution No. 2134 adopted the City of San Luis 2040 General Plan on the 10th day of June, 2020;

WHEREAS, Core Engineering Group PLLC on behalf of Boarder Ranches II AZ LLC to change the land use designation of a 20-acre parcel from Commercial (C) to Medium Density Residential (MDR). Assessor's parcel number 227-15-030, located on the northeast corner of 20th Avenue and County 24 1/2 Street in San Luis Arizona; as attached hereto as "Exhibit A"

WHEREAS, the Planning and Zoning Commission held public hearings on this proposed amendment on September 14th, 2021, September 21st, 2021 and October 12, 2021 and made a recommendation of Approval to the City Council; and

WHEREAS, the City Council of the City of San Luis, Arizona held a public hearing on this proposed amendment on October 27, 2021 and adopted a motion to approve the amendment;

NOW, THEREFORE, BE IT RESOLVED by the Mayor and Council of the City of San Luis, Arizona, that the City of San Luis 2040 General Plan is hereby amended to change the Land Use Designation from Commercial to Medium Density Residential for a 20-acre parcel located at:

The S½ of the SW ¼ of the NE ¼ of Section 15, Township: 11 South, Range 24 West Yuma County, Arizona.

PASSED AND ADOPTED by the Mayor and City Council of the City of San Luis, Arizona, this ____ day of _____, 2021.

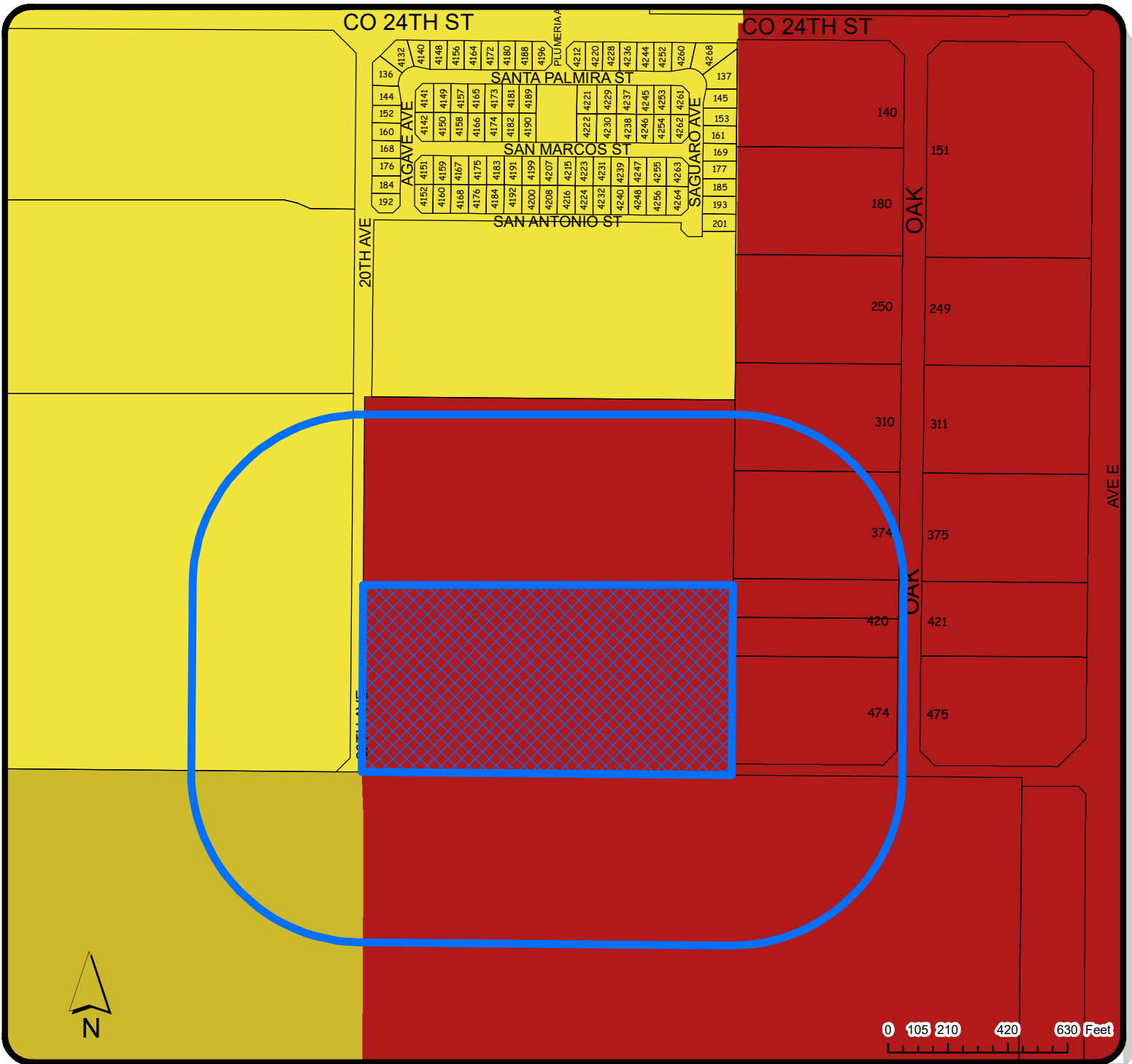
Gerardo Sanchez, Mayor

ATTEST:

Sonia Cornelio, City Clerk

APPROVED AS TO FORM:

Kay Marion Macuil, City Attorney



LOCATION OF SUBJECT PROPERTY




 PARCEL 227-15-003

 600ft Notification Area

LOCATION MAP

Legend

LAND USE

-  Medium Density Residential
-  High Density Residential
-  Commercial

MAJOR AMENDMENT

CASE #
2021-0337

DATE:

5/5/2021

PLANNING & ZONING



GIS

CREATED BY:

ISAAC GUTIERREZ

CHECKED BY:

ROMAN PACHECO

APPROVED BY:

JOSE A. GUZMAN