



TIME & MONEY

ECONOMIC DEVELOPMENT

Jenny Torres

Economic Development Manager

Proposed Redevelopment Area ■ Área de Reurbanización Propuesta



Downtown Redevelopment Plan Master Plan \$55,000

Circulation Study, Parking Study, and Origin and Destination Study

\$98,605



Figure 1

Downtown Park and Parking Design \$300,000



Downtown San Luis Master Drainage Plan - C Street and 2nd Avenue/D Street and 1st Avenue - Proposed Storm Drainage Improvements - Detention Basin Summary of Alternatives



ALTERNATIVE 1 - EXISTING CONDITIONS

- Full Onsite Retention of Stormwater Required (Ex. Storm Drain System Deficient for 100-year Flows)
- No Construction Cost

ALTERNATIVE 2 - Provide Detention Basin and Storm Drain Extensions to Meet Current Flow Needs

- 60% Onsite Stormwater Retention Required (Average of Current Conditions)
- About 520,000 Construction Cost

ALTERNATIVE 3 - Provide Detention Basin and Storm Drain Extensions to allow for No Retention

- No Onsite Stormwater Retention Required
- About 750,000 Construction Cost

Proposed 2nd Avenue
Detention Basin
(Alternative Locations)

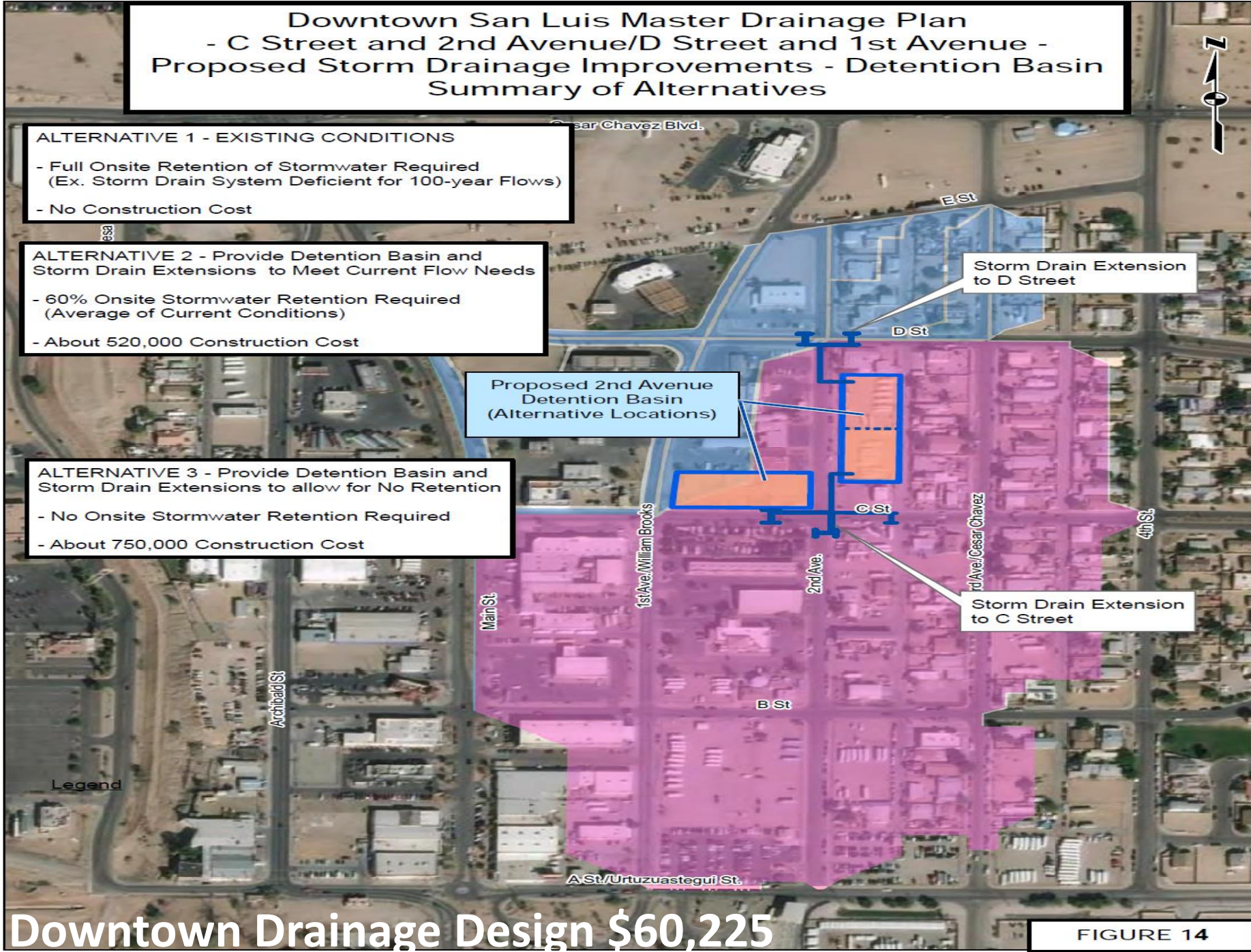
Storm Drain Extension
to D Street

Storm Drain Extension
to C Street

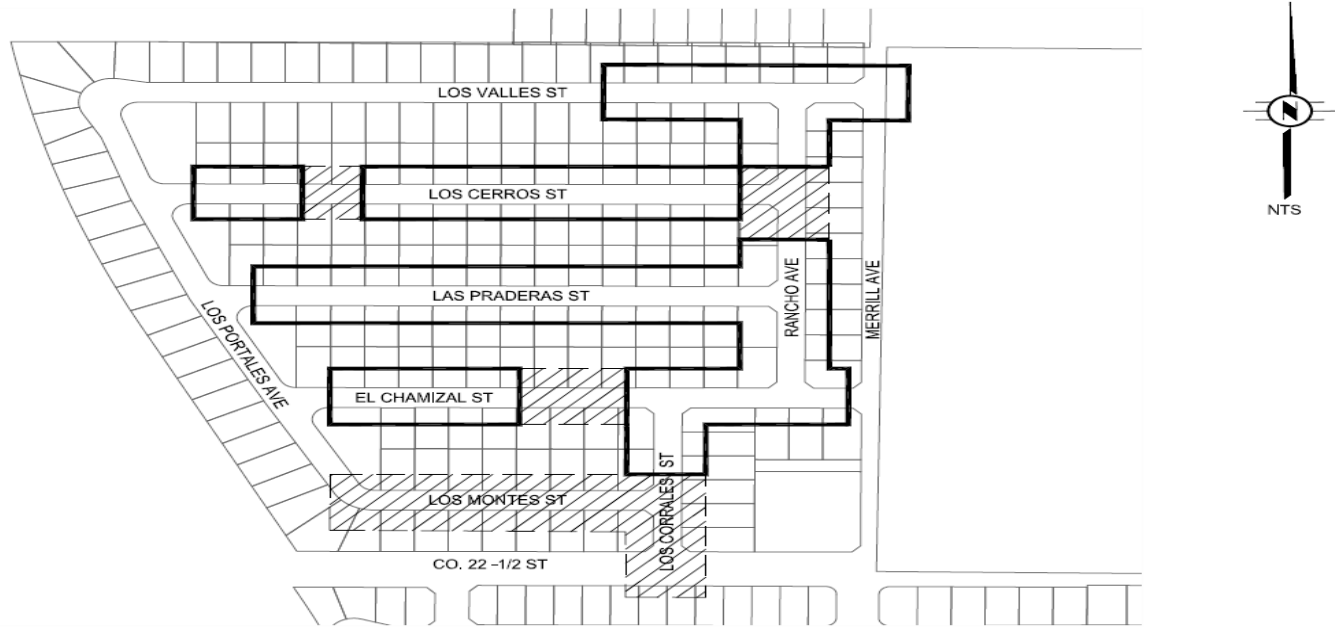
Legend

Downtown Drainage Design \$60,225

FIGURE 14



CITY OF SAN LUIS
RANCHO LOS OROS ROADWAY IMPROVEMENTS - PHASE 2



CDBG-SSP Rancho Los Oros Phase II \$872,701

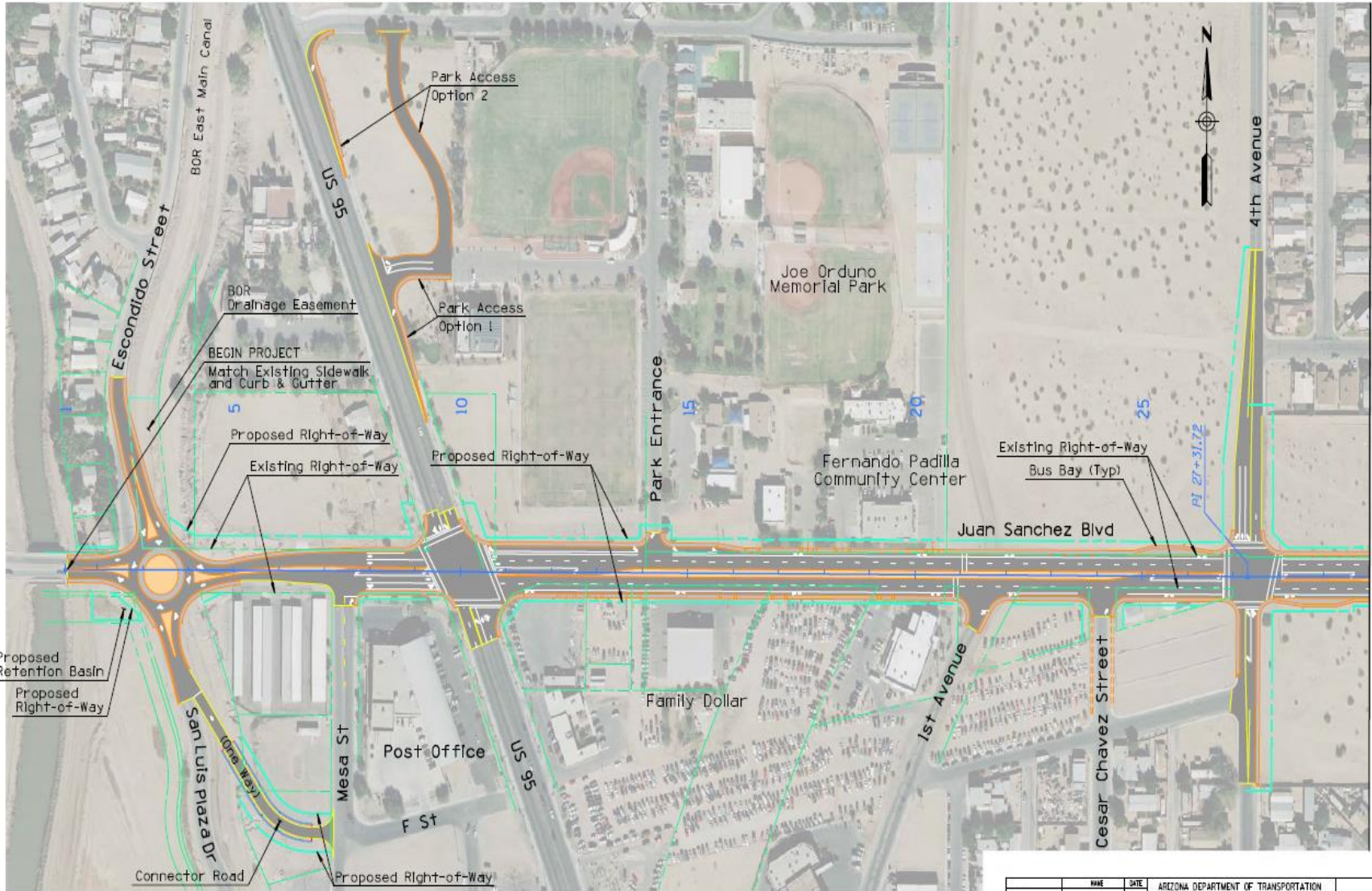
LEGEND

**MESA STREET
IMPROVEMENT PROJECT**
Project Limits

**Mesa Street
Improvements**
Phase I \$1,322,627
Phase II \$186,898
Total \$1,509,525



FALSA REGION	STATE	PROJECT NO.	SHEET NO.	TOTAL SHEETS	AS BUILT
9	AZ	SL5-02031A			



See Sheet 2 of 7

Cesar Chavez Design \$1,000,000
Cesar Chavez Private ROW \$ 803,816



NO.	NAME	DATE	ARIZONA DEPARTMENT OF TRANSPORTATION INTERMODAL TRANSPORTATION DIVISION ROADWAY DESIGN SERVICES		NOT FOR CONSTRUCTION OR RECORDING
DESIGN	PHS	3/24	JACOBS PLAN VIEW		
DRAW	RC	3/24			
CHECK	SCD	3/24			
LOCATION JUAN SANCHEZ BLVD IMPROVEMENTS FROM US 95 TO SR 195			SHEET 1 OF 7		OF
TRACS NO. S2018 03D					

©2024 Jacobs Engineering Group, Inc. All rights reserved.



Broadband Regional Commitment \$2,903,790

Legend

 PROPOSED Middle Mile Backbone LINEAR MILES - 138.3

PROPOSED Yuma County Network

A woman with dark hair, wearing a light blue button-down shirt and a red apron, stands behind a glass display case filled with various pastries. She is smiling and looking to her right. She holds a yellow pen and a small white card. The display case has multiple shelves with trays of breads, rolls, and pastries. Above the case, on a brick wall, are several decorative items including a large ceramic jar with a floral design, a small vase with pink flowers, and other colorful vessels. The background shows a bakery interior with a counter and other staff members.

CITY OF SAN LUIS
Small
Business
Relief Grants
\$200,000



ECONOMIC INCENTIVES

\$200,000



“Time is money,
continually look
for ways to do
Things faster
and better”