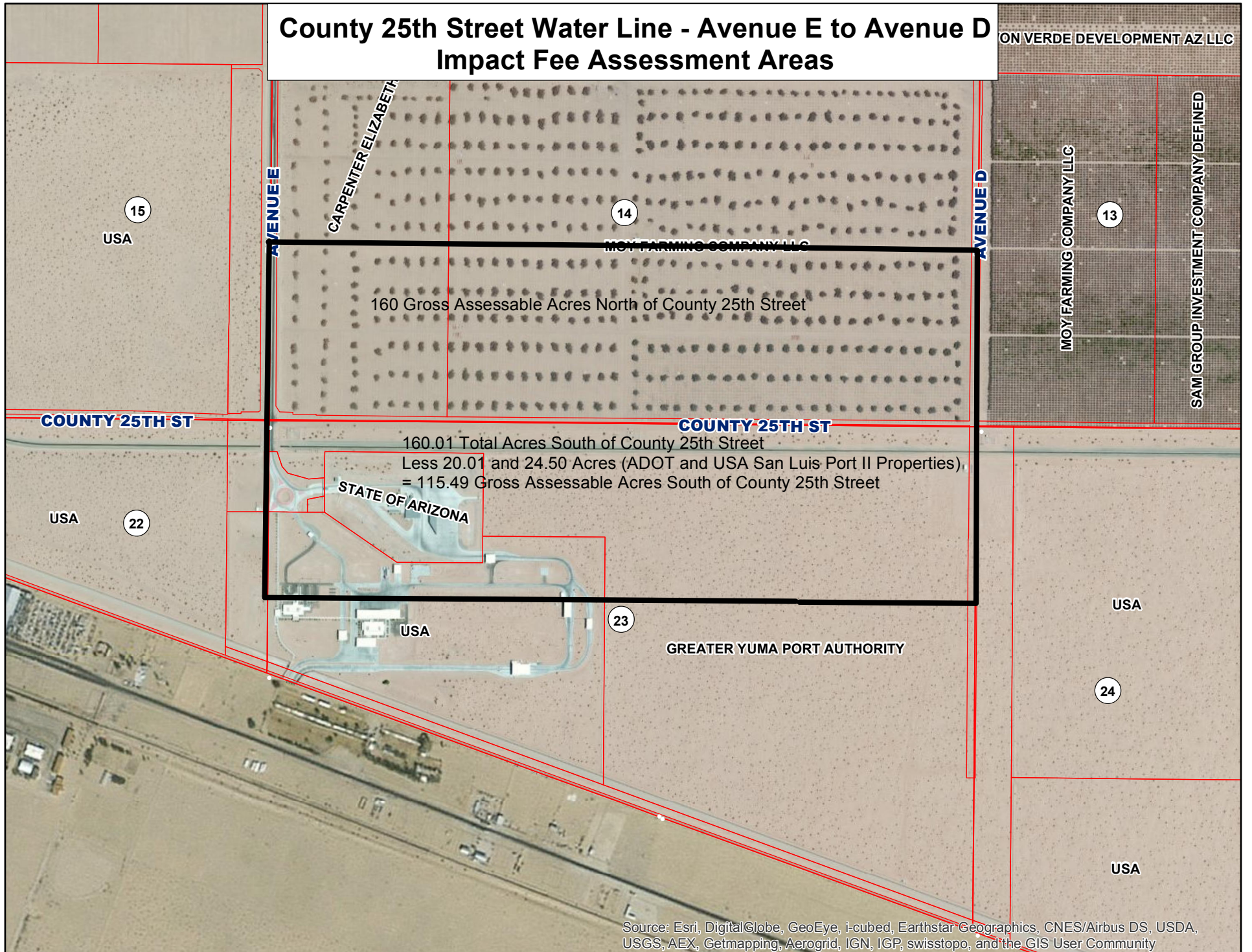


# County 25th Street Water Line - Avenue E to Avenue D Impact Fee Assessment Areas



160 Gross Assessable Acres North of County 25th Street

160.01 Total Acres South of County 25th Street  
Less 20.01 and 24.50 Acres (ADOT and USA San Luis Port II Properties),  
= 115.49 Gross Assessable Acres South of County 25th Street

STATE OF ARIZONA

GREATER YUMA PORT AUTHORITY

Source: Esri, DigitalGlobe, GeoEye, i-cubed, Earthstar Geographics, CNES/Airbus DS, USDA, USGS, AEX, Getmapping, Aerogrid, IGN, IGP, swisstopo, and the GIS User Community