

Supporting Data for Cash Flow Projection

Reason for this document

The City of San Luis is engaged in the domestic water business. The city must comply with Arizona Revised Statute (“A.R.S.”) § 9-511.01(A)(1) to recuperate the city’s cost for building a water line. The city built the water line down County 25th Street. The statute allows the city to recuperate its costs if the city only charges lands that benefit from the water line. The statute requires this document to indicate all anticipated revenues from residential and non-residential customers and the overall expenses for providing water service.

This document will be available to the public at least thirty (30) days before the public hearing. It will be filed with the Office of the San Luis City Clerk and posted on the city’s website. City Council shall hold the public hearing on Wednesday, March 23, 2022, at 7:00 p.m. at the Council Chambers in City Hall, 1090 East Union Street. San Luis, Arizona 85349.

Revenue (Solely Reimbursement) and Overall Expenses for Providing water service

The City of San Luis seeks reimbursement for the cost, nothing more. It will be a one-time fee to the benefitted lands. The total possible amount to be reimbursed to the city will be the amount the city spent in constructing the water line, \$236,195.58, itemized as follows:

Engineering (Vega & Vega Engineering)	\$ 8,682.68
Permitting	\$ 1,500.00
Bidding and Construction Administration	
James Davey & Associates	\$ 13,928.00
Construction (Desert Excavating)	<u>\$212,084.90</u>
Total Cost	\$236,195.58

Customers and Timing (Solely Commercial Non-Residential)

The customers in the land benefitted by the water line are solely commercial (*non*-residential). The land consists of the Magrino Industrial Park and the lands north of County 25th Street currently planned for non-residential development in the East of the City of San Luis. These commercial (non-residential) customers will pay at the time of development. However, if they are already in operation, they will pay as part of the connection fee.

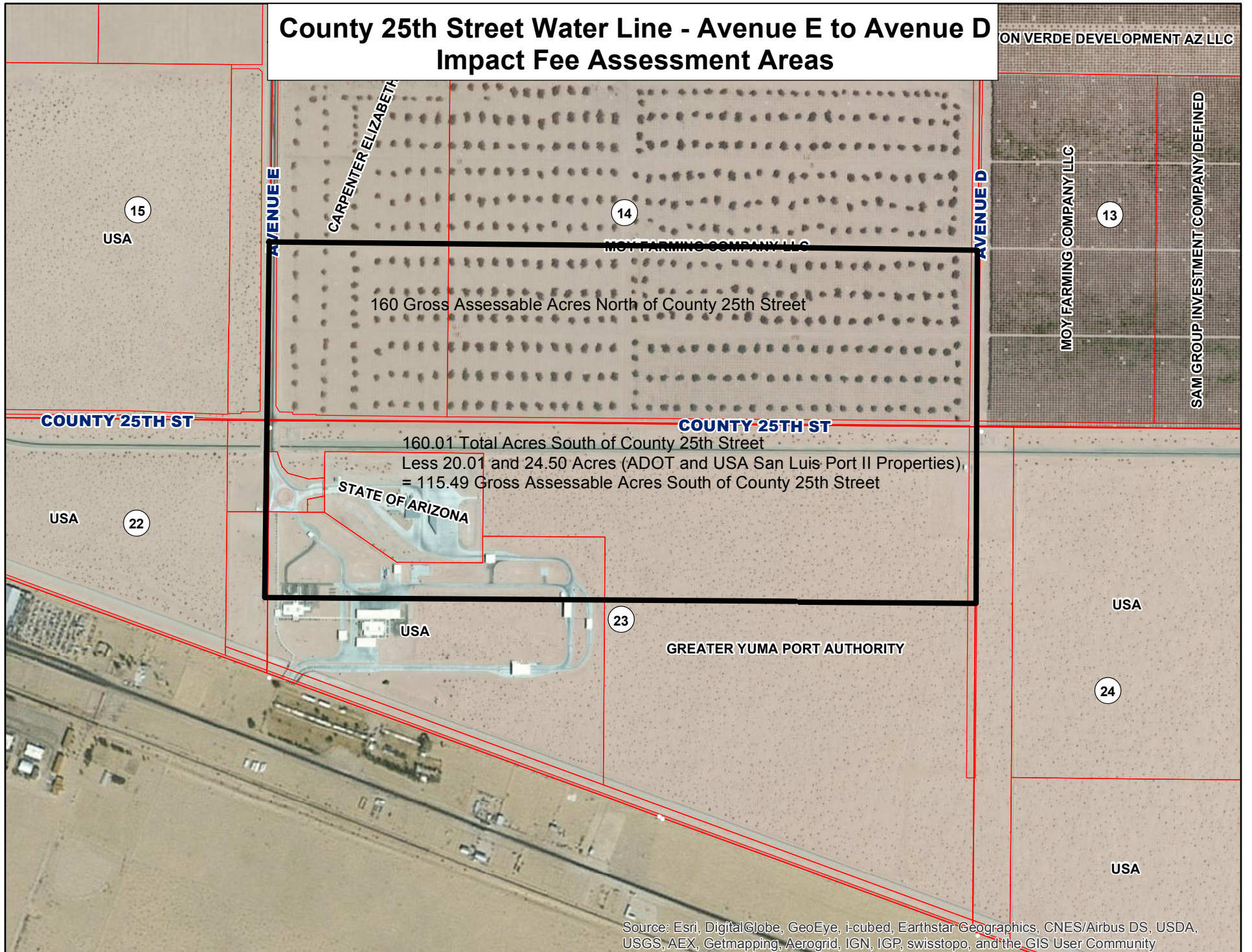
Type of Service

The water line provides water service to the benefitted lands.

Attachment

The attached map shows the benefitted lands with a heavy black line.

County 25th Street Water Line - Avenue E to Avenue D Impact Fee Assessment Areas



160 Gross Assessable Acres North of County 25th Street

160.01 Total Acres South of County 25th Street
Less 20.01 and 24.50 Acres (ADOT and USA San Luis Port II Properties),
= 115.49 Gross Assessable Acres South of County 25th Street

STATE OF ARIZONA

GREATER YUMA PORT AUTHORITY