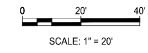


MATCHLINE - SEE SHEET C5.0



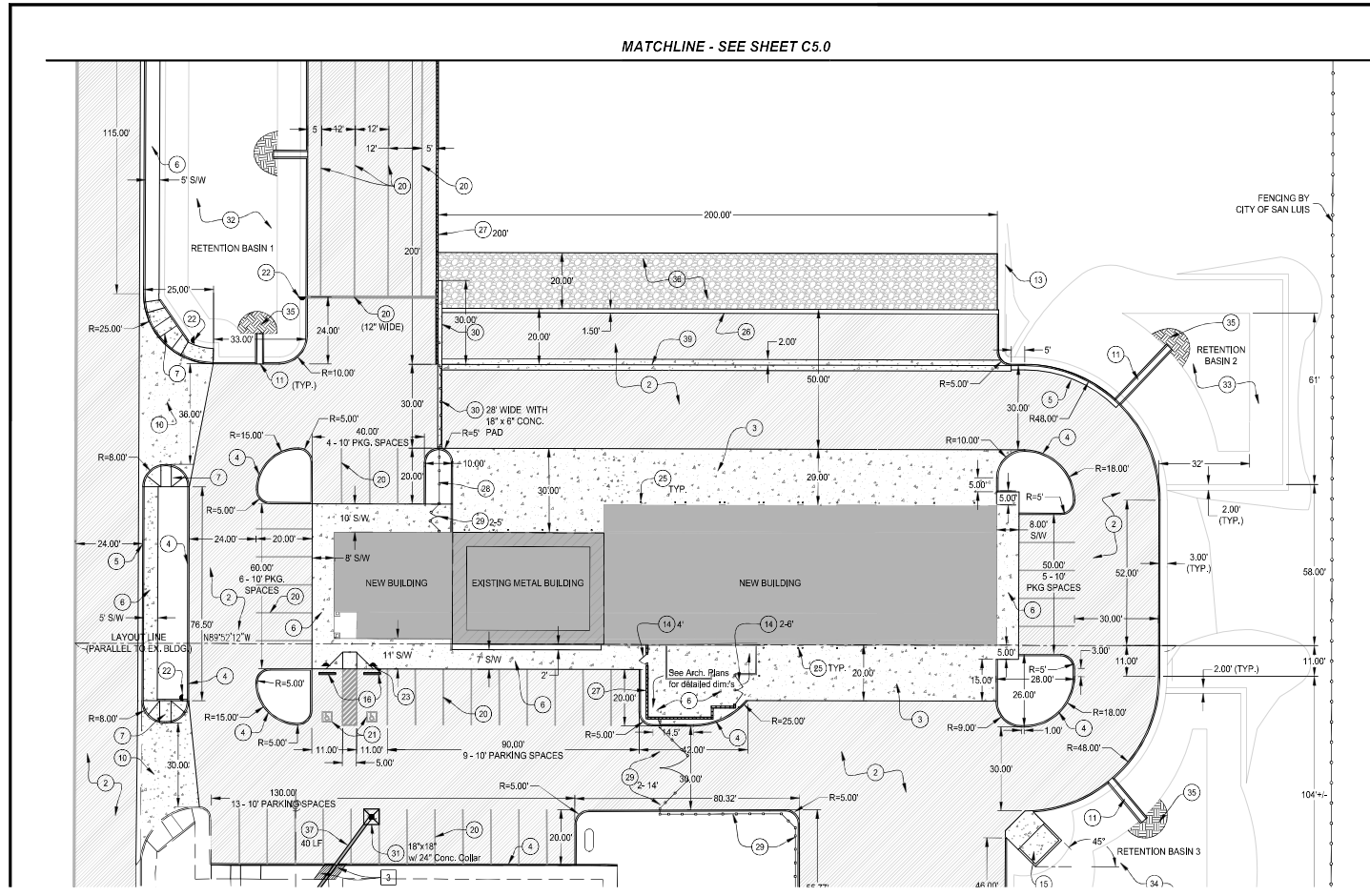
REMOVAL NOTES	
1	REMOVE EXISTING SPILLWAY
2	SAW CUT 1'-0\"/>

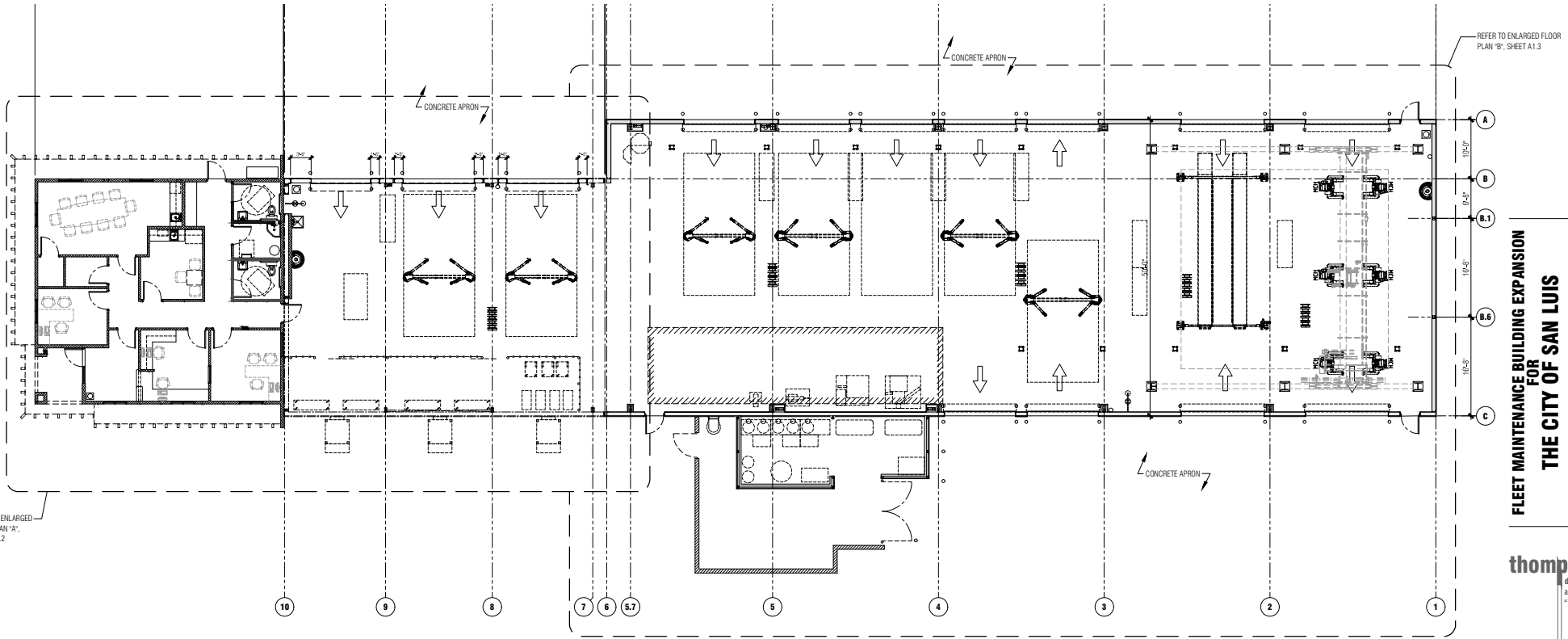
CONSTRUCTION NOTES	
1	GRADING FOR PAVEMENT
2	PAVEMENT STRUCTURAL SECTION NO. 1 (2-1/2\"/>

JDA
JAMES DAVEY AND ASSOCIATES
 CONSULTING CIVIL ENGINEERS
 1025 W. 30TH STREET, SUITE 2, YUMA, AZ 85304
 PHONE (928) 782-7699 WWW.JDAONLINE.COM

FLEET MAINTENANCE BUILDING EXPANSION FOR THE CITY OF SAN LUIS
 SAN LUIS, ARIZONA

thompson design architects





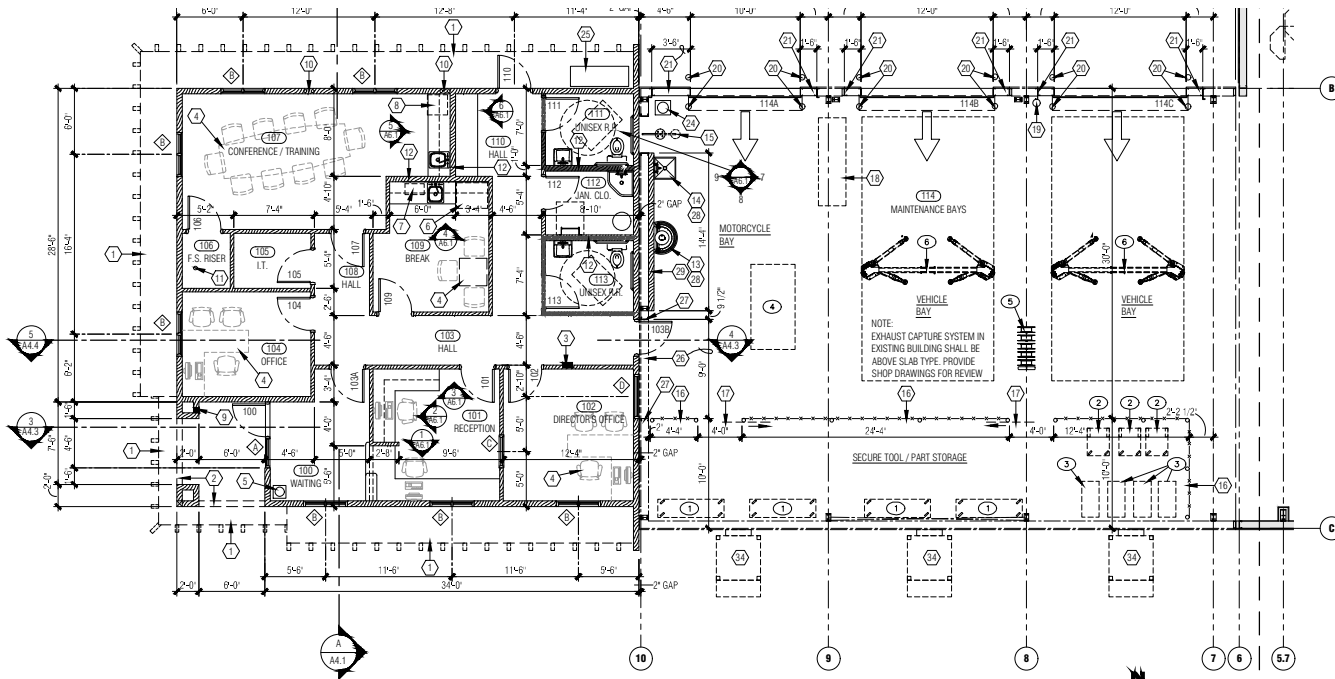
OVERALL FLOOR PLAN

SCALE: 1/8" = 1'-0"



FLEET MAINTENANCE BUILDING EXPANSION
THE CITY OF SAN LUIS
 SAN LUIS, ARIZONA





ENLARGED FLOOR PLAN - A

SCALE: 3/16" = 1'-0"

ROOM FINISH SCHEDULE

ROOM NUMBER	ROOM NAME	FLOOR						CEILING		REMARKS
		FINISH	BASE	NORTH	EAST	SOUTH	WEST	FINISH	HEIGHT	
100	WAITING	V.C.T.	R.B.	G.W.B.	G.W.B.	G.W.B.	G.W.B.	G.W.B.	9'-0"	
101	RECEPTION	V.C.T.	R.B.	G.W.B.	G.W.B.	G.W.B.	G.W.B.	G.W.B.	9'-0"	
102	DIRECTOR'S OFFICE	V.C.T.	R.B.	G.W.B.	G.W.B.	G.W.B.	G.W.B.	A.C.T. 22	9'-0"	
103	HALL	V.C.T.	R.B.	G.W.B.	G.W.B.	G.W.B.	G.W.B.	A.C.T. 22	9'-0"	
104	OFFICE	V.C.T.	R.B.	G.W.B.	G.W.B.	G.W.B.	G.W.B.	A.C.T. 22	9'-0"	
105	L.T.	V.C.T.	R.B.	G.W.B.	G.W.B.	G.W.B.	G.W.B.	G.W.B.	9'-0"	

ROOM FINISH ABBREVIATIONS

- FLOORS:**
- V.C. VINYL COMPOSITION TILE
 - S.V. SHEET VINYL WITH 6" TALL INTEGRAL BASE
 - S.C. SEALED CONCRETE
 - E.C.T. EXISTING CONCRETE - CLEAN AND SEAL
 - C.S.C.F. SEALED CONCRETE - SMOOTH FINISH
- BASE:**
- R.B. 4" TALL RUBBER BASE

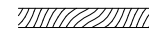
REMARKS:

- INSTALL WATER RESISTANT GYP. BOARD UP TO 4' HIGH ON PLUMBING WALLS
- 4'-0" WIDE x 4'-0" HIGH F.R.P. WAINSCOT ON BOTH WALL SURFACES ADJACENT TO UTILITY / MOP SINK

GENERAL NOTES:

- REFER TO INTERIOR ELEVATIONS FOR ADDITIONAL FINISH INFORMATION
- REFER TO REFLECTED CEILING FOR ADDITIONAL FINISH INFORMATION
- AT ALL TRANSITIONS OF FINISHING TYPES PROVIDE

WALL TYPES



(TYPICAL UNLESS NOTED OTHERWISE ON PLANS)

TYPICAL PERIMETER WALLS (U.N.O.):
 2x6 WOOD STUDS AT 16" O.C. - TREATED
 SILL PLATE ON FOAM SEAL PAD ON 4" TALL
 CONCRETE CURB - R-19 BATT INSULATION
 BETWEEN STUDS - 5/8" GYP BOARD INTERIOR
 SIDE - 2 COAT STUCCO SYSTEM W/ ACRYLIC
 FINISH; OVER EXPANDED METAL LATH; OVER
 1/8" THICK COMMERCIAL WRAP (OR EQUAL)
 BARRIER, OVER 1" THICK RIGID INSULATION,
 OVER 1/2" PLYWOOD SHEATHING - REFER TO
 STRUCTURAL DRAWINGS

- 8 BENDPAK 2 POST LIFT - 15,000 LB XPR-15CL
 - 9 BENDPAK 4 POST LIFT - 27,000 LB HDS-27X
 - 10 STRETEL KONI LIFT - MOBILE
 - 11 CRAFTSMAN DRILL PRESS
 - 12 AMMO GRAB LATHE - MODEL 4000B
 - 13 COATS WHEEL BALANCER MODEL #102SS
 - 14 COATS TIRE CHANGER MODEL #80700X43
 - 15 RANGER PROD. SPRAY WASH CAB MODEL #RS-750-D-601
 - 16 10 HP AIR COMPRESSOR
 - 17 5 HP AIR COMPRESSOR
 - 18 DRUM CONTAINMENT PALLET (2 DRUM) - NEW PIG 2 DRUM (QTY. 3)
 - 19 PALLET RAMP - NEW PIG DRUM PALLET RAMP (QTY. 3)
 - 20 BULK OIL TANK W/ PNEUMATIC PUMP
 - 21 USED OIL TANK
 - 22 PNEUMATIC FLUID PUMP (QTY. 5) WITH WALL MOUNT KIT
 - 23 7.5 TON CAPACITY BRIDGE CRANE - R & M MATERIALS HANDLING
- DENOTES EXISTING EQUIPMENT - CONTRACTOR TO ASSIST THE CITY OF SAN LUIS IN RELOCATING AND INSTALLING AT THE NEW FACILITY
- DENOTES NEW EQUIPMENT PROVIDED BY THE CITY OF SAN LUIS AND INSTALLED BY CONTRACTOR
- NOTE:**
 REFER TO MECHANICAL DRAWINGS FOR EXHAUST CAPTURE SYSTEM PERFORMANCE SPEC.

KEYNOTES

SOME MAY NOT APPLY

- EDGE OF ROOF, ABOVE
- EDGE OF SOFFIT, ABOVE
- SEMI-RECESSED FIRE EXTINGUISHER CABINET W/ MINIMUM 2A-10BC FIRE EXTINGUISHER - MOUNT NOT HIGHER THAN 5'-0" A.F.F. - PROVIDE APPROVED FIRE EXTINGUISHER SIGNAGE ABOVE EACH LOCATION
- FURNISHINGS - BY OWNER
- OWNER PROVIDED WATER DISPENSER
- REFRIGERATOR / FREEZER - BY OWNER
- MICROWAVE OVEN IN CABINET ABOVE - BY OWNER
- UNDER-COUNTER REFRIGERATOR - BY OWNER
- KNOX BOX
- ROOF DRAIN AND OVERFLOW LEADERS - RUN CONCEALED IN WALL - DAYLIGHT AT 12" ABOVE EXTERIOR GRADE
- FIRE SPRINKLER RISER - REFER TO FIRE PROTECTION PLANS
- 6" PLUMBING WALL - 2x6 WOOD STUDS AT 24" O.C. W/ 5/8" GYP. BOARD BOTH SIDES - PROVIDE WATER RESISTANT GYP. BOARD ON BOTTOM 4'-0" OF WALL
- SEMI-CIRCULAR HAND WASH FOUNTAIN - REFER TO PLUMBING DRAWINGS
- SERVICE SINK - REFER TO PLUMBING DRAWINGS
- EMERGENCY EYE WASH AND SHOWER - REFER TO PLUMBING DRAWINGS
- 12 TALL CHAIN LINK FENCE - ANCHOR POSTS AT 8'-0" O.C. MAX. TO EXISTING FLOOR SLAB
- 4" WIDE x 8" TALL ROLLING CHAIN-LINK GATE
- WORK BENCH BY OWNER
- WALL MOUNTED FIRE EXTINGUISHER - MINIMUM 2A-10BC FIRE EXTINGUISHER - MOUNT NOT HIGHER THAN 5'-0" A.F.F. - PROVIDE APPROVED FIRE EXTINGUISHER SIGNAGE ABOVE EACH LOCATION
- 6" DIA. X 4' HIGH PIPE STEEL BOLLARD - FILL WITH CONCRETE - PRIME AND PAINT YELLOW
- FRAME IN EXISTING WALL OPENINGS TO CREATE NEW OPENINGS FOR OVERHEAD DOORS - REFER TO STRUCTURAL DRAWINGS
- IN-GROUND EXHAUST CAPTURE SYSTEM - REFER TO MECHANICAL DRAWINGS BELOW-SLAB DUCTS SHALL BE RATED FOR HEAVY VEHICLE LOADS - DUCT RUNS SHALL BE COORDINATED WITH STRUCTURAL FOUNDATION DESIGN - PROVIDE SHOP DRAWINGS FOR REVIEW
- NOT USED
- IN-LINE EXHAUST FAN W/ VERTICAL DUCT UP THROUGH ROOF - PROVIDE WEATHER-TIGHT PENETRATION AND HOOD
- SERVICE ENTRANCE SECTION - REFER TO ELECTRICAL DRAWINGS
- SILL PLATE ON FOAM SEAL PAD ON 4" TALL PORTION OF EXISTING METAL BUILDING SOWING PANELS - CUT AND REMOVE 9'-0" LENGTH OF LOWEST WALL GIRT - PROVIDE CONTINUOUS METAL TRIM TO COVER CUT EDGE OF WALL PANELS
- INSTALL NEW "C" JAMBS - REFER TO STRUCTURAL DRAWINGS
- SAW CUT EXISTING CONCRETE SLAB AS NECESSARY TO CONNECT TO NEW WASTE LINE - UPON COMPLETION AND INSPECTION OF PLUMBING WORK, FILL WITH CLEAN SAND AND COMPACT - POUR NEW SLAB PATCH TO MATCH EXISTING THICKNESS AND PLANE

FLEET MAINTENANCE BUILDING EXPANSION
FOR THE CITY OF SAN LUIS
 SAN LUIS, ARIZONA

