

## San Luis Invested Money in CMYC Outreach Events and Admission Passes

### Outreach Events

Event Name/Components	Expenses
<b>Space Exploration Day</b>	
Staffing	\$ 350.00
Preparation/Transportation	\$ 100.00
Materials	\$ 300.00
Experts	\$ 500.00
<b>Art Exploration Day</b>	
Staffing	\$ 350.00
Preparation/Transportation	\$ 100.00
Materials	\$ 300.00
Experts	\$ 500.00
<b>Participation in Dia del Niño</b>	
Staffing	\$ 300.00
Preparation/Transportation	\$ 100.00
Materials	\$ 200.00
<b>Additional Outreach Day (if requested)</b>	
Staffing	\$ 350.00
Preparation/Transportation	\$ 100.00
Materials	\$ 300.00
Experts	\$ 500.00
<b>Outreach Event Total Value</b>	<b>\$ 4,350.00</b>
<b>Family Passes for Museum Admission</b> 700 Family Admission Passes for up to 5 people in family	
<b>Family Passes Total Value</b>	<b>\$ 5,000.00</b>
<b>Discount off admission for City of San Luis Employees</b>	
<b>City Employee Admission Discount</b>	<b>\$ 650.00</b>
<b>Total Value of Investment</b>	<b>\$ 10,000.00</b>

**03.1.2022**

---

*Executive Director*  
Melissa Rushin Irr

Dear City of San Luis Mayor, Council Members and Administrators,

We hope you found our video presentation inspirational and informative as we prepare to launch the Children's Museum of Yuma County into year-round service to the greater Yuma County area including San Luis. We are approaching each municipality and the County with the opportunity to partner with our existing donors and supporters in making an investment to help make this vital community resource a reality.

---

**Board of Directors**

Jovani Ford,  
*President*  
Kristen Eshaya,  
*Vice-President*  
Jennifer Kaste,  
*Secretary*  
Kevin Burge,  
*Treasurer*

We plan to come before you in the coming weeks to respectfully and formally ask that you include the Children's Museum of Yuma County in the upcoming City of San Luis budget cycle with an investment of \$10,000. An investment from the City of San Luis along with each municipality in the county will help us to bring our programming to the children and families in our region. By building on and expanding the successful programming and partnerships we've formed over the past 9 years and seeking new funding, we are positioning the organization for continued success and service for many years to come.

Jim Larson,  
*Member*  
Miriam Limon,  
*Member*  
Greg LaVann,  
*Member*  
Ricardo Perez,  
*Member*

If you have any questions or concerns, please feel free to reach out to us as needed.

Sincerely,

**Jovani Ford**  
President, Board of Directors

**Greg LaVann**  
Board Member

**Melissa Rushin Irr**  
Executive Director  
*Children's Museum of Yuma County, Inc*

---

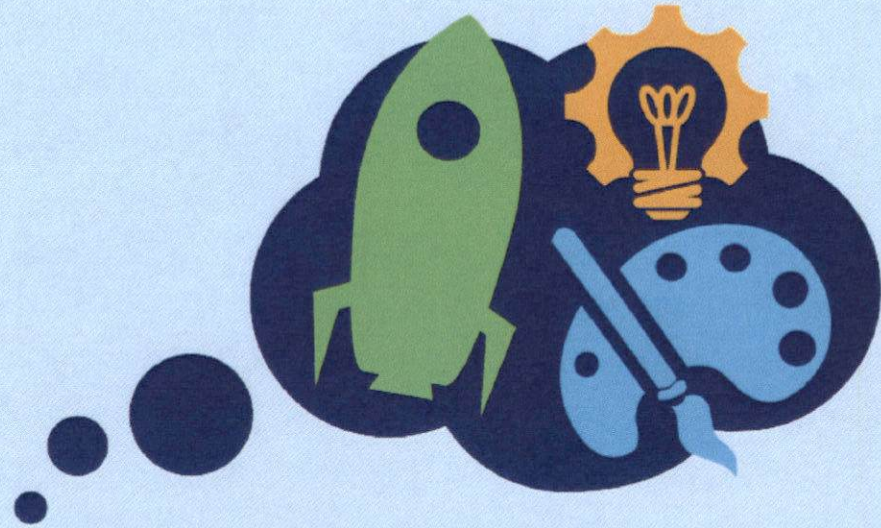
**Children's Museum of Yuma County, Inc.**

Tel 844-426-9862

180 W. 1st St. Ste A1  
Yuma, AZ 85364

YumaChildrensMuseum.com  
melissa@YumaChildrensMuseum.com

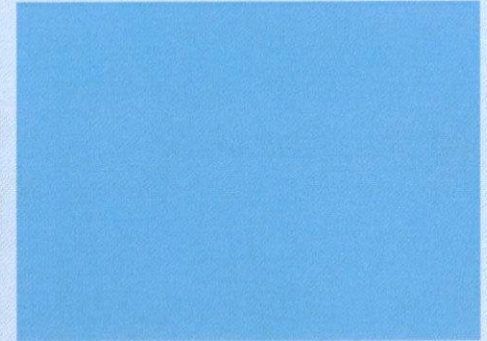




children's  
museum

YUMA COUNTY

Creating Playful Change  
in our Community



## Our Mission

Creating playful experiences where  
all children learn through  
exploration, imagination, and creativity.

# Our History...

- What is a children's museum?
- Children's Museum of Yuma County was founded in 2013
- For the past 9 years, we have:
  - Operated successful outreach events, a summer children's museum for 4 summers, virtual class kit program, and a summer camp program
  - Partnered with community members, service organizations, individual schools and districts, governmental agencies and other nonprofits and foundations to advance our mission
  - Become members of the international Association of Children's Museums and the National Informal STEM Education Network

## Responding to the Community During the Pandemic

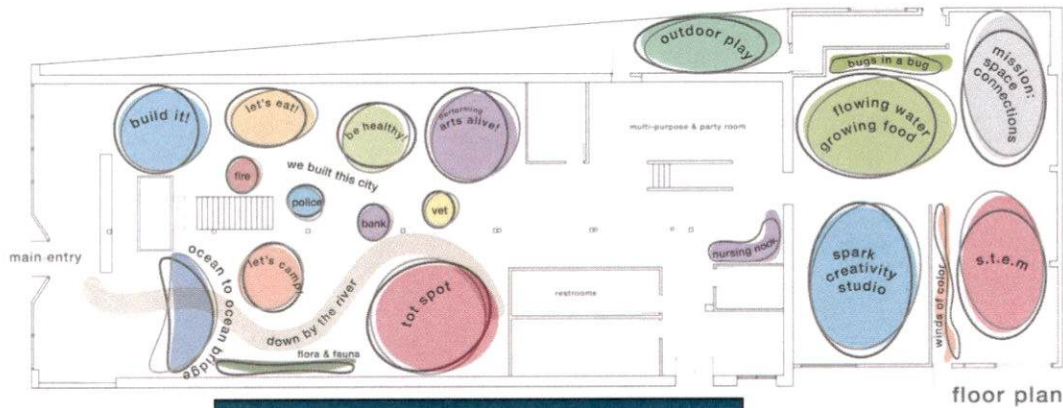


- Shared online activity suggestions in early days of COVID-19 pandemic
- Developed a Museum@Home Class Kit Program Summer 2020
- Created our Spark Creative Curiosity Camps for Summer 2021





let's build a museum!



## Exhibits Featured

- Down By the River & Tot Spot
- We Built This City
- Flowing Water, Growing Food
- Bugs in a Bug
- Mission: Space Connections
- Nanotechnology
- Winds of Color
- Spark Creativity Studio



# Our needs are greater than ever as we make our museum a reality...

- General operating expenses
- General program expenses
  - field trips
  - camps
  - workshops
  - pass program for economically disadvantaged families and more
- Enhancing enrichment experiences for guests, staff, and volunteers

# How will we benefit the City of San Luis?

- Opportunities
  - Strengthen existing partnerships, programs, and outreach
  - Foster new partnerships, programs, and outreach
- Value
  - Supporting needs of children and families
  - Enriching lives of children & families
  - Supporting economic development

# Key Funders During Our Development

Regional Center for Border Health

Sunset Community Health Center

Shay Oil Company

Gowan Company

Academy Mortgage Company

JV Smith Farms & Smith Family  
Foundation

Yuma County Chamber of  
Commerce

BLT Companies

Yuma Insurance Company

Arizona Lighting Company

Yuma Foot Care

Taylor Engineering

Dahl, Robins, & Associates

AEA Federal Credit Union

1<sup>st</sup> Bank Yuma

YRMC

Carol & Company Realtors

Partners Real Estate Group

Greater Yuma Economic  
Development Corporation

NexGen Yuma

Strong Beginnings

Southwest Gas

Pilkington Construction

Yuma Investment Group

# Other Support

## Grant Funding

Arizona Community Foundation of Yuma  
Community Foundation of Southern  
Arizona  
Arizona Community Foundation  
Arizona Public Service  
Officers' Spouses' Club of MCAS Yuma  
Arizona Commission on the Arts  
Flinn Foundation  
Arizona Game and Fish Department

## Service Organizations

Yuma Rotary Club  
Fort Yuma Rotary Club  
Sunrise Rotary Club  
Rotary District 5500

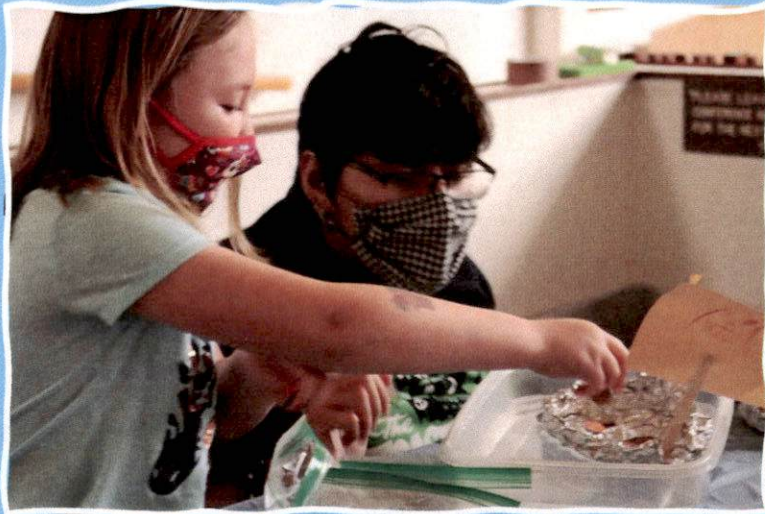
# Planned Revenue Streams

- Earned Revenue
  - Admissions (\$6-7/person)
  - Memberships (family and corporate)
  - Camp, Workshop, Class Fees
  - Field Trip Fees
  - Facility Rentals (primarily for birthday parties and showers)
  - Retail Gift Shop Sales
- Contributed Revenue
  - Monthly Giving Program
  - Fundraising Events
  - Corporate, Organization, Individual Donations
  - Sponsorships of Events, Programs, or Exhibits
  - Grant Funding (short-term and multi-year)
  - Governmental Funding

This is so much better than school!

~~Liam G., age 12

SparkCamps 2021



Aww! I want to keep coming  
back next week!

~~Michael, age 6

SparkCamps 2021



Thanks for giving kids like me a place to belong.

~~Jasmine, age 11

Summer Children's Museum 2019



Melissa Rushin Irr, Executive Director

928-920-5649

[melissa@yumachildrensmuseum.com](mailto:melissa@yumachildrensmuseum.com)

[yumachildrensmuseum.com](http://yumachildrensmuseum.com)

Donate securely at [yumachildrensmuseum.com](http://yumachildrensmuseum.com)  
or through Arizona Community Foundation

# Contact

For Tours, Donations, or Sponsorship  
Opportunities