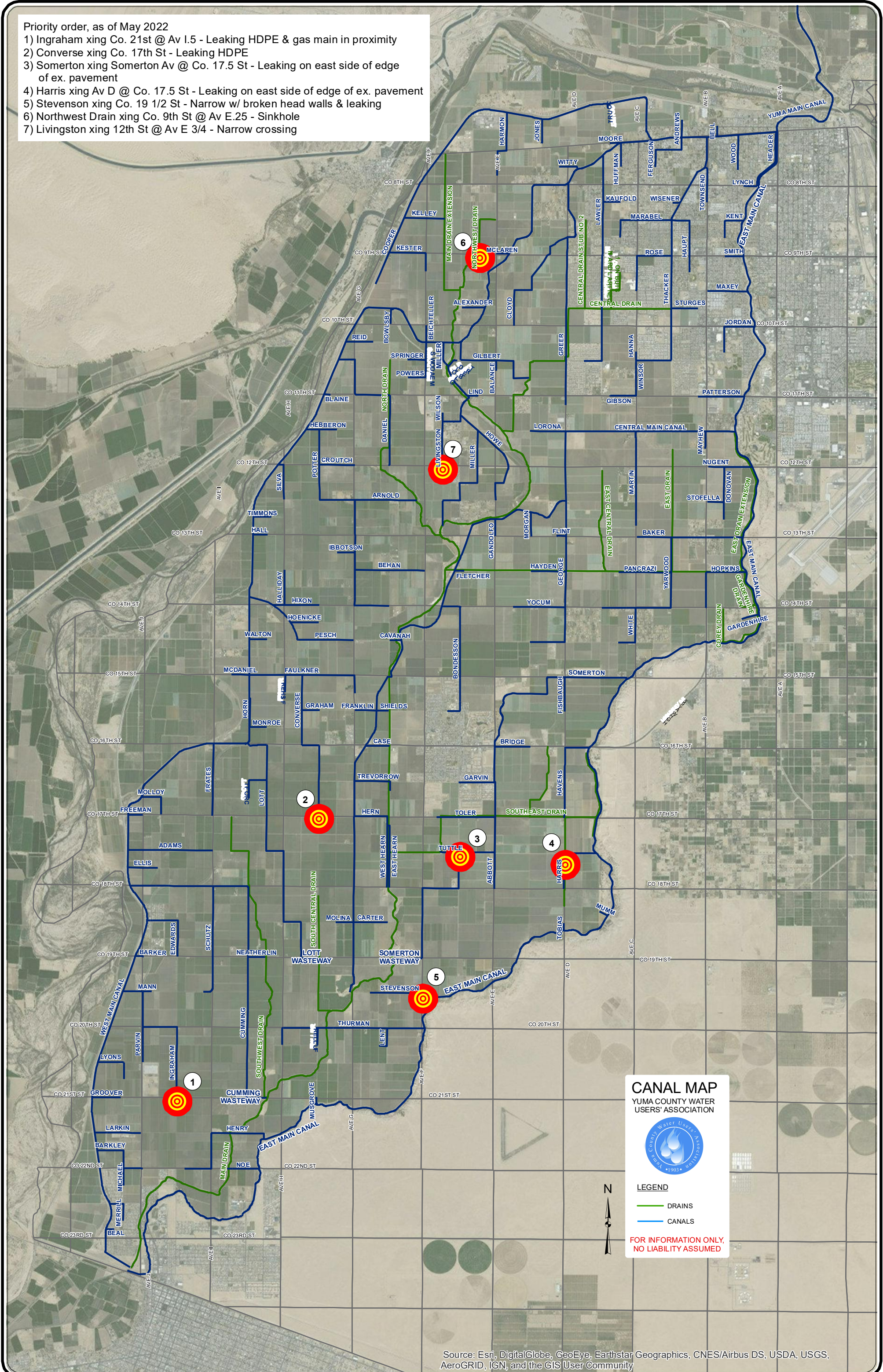


Priority order, as of May 2022

- 1) Ingraham xing Co. 21st @ Av I.5 - Leaking HDPE & gas main in proximity
- 2) Converse xing Co. 17th St - Leaking HDPE
- 3) Somerton xing Somerton Av @ Co. 17.5 St - Leaking on east side of edge of ex. pavement
- 4) Harris xing Av D @ Co. 17.5 St - Leaking on east side of edge of ex. pavement
- 5) Stevenson xing Co. 19 1/2 St - Narrow w/ broken head walls & leaking
- 6) Northwest Drain xing Co. 9th St @ Av E.25 - Sinkhole
- 7) Livingston xing 12th St @ Av E 3/4 - Narrow crossing



CANAL MAP
 YUMA COUNTY WATER
 USERS' ASSOCIATION

LEGEND

- DRAINS
- CANALS

**FOR INFORMATION ONLY,
 NO LIABILITY ASSUMED**