



GYPA

Greater
Yuma
Port
Authority

Greater Yuma Port Authority Update

City of San Luis, AZ

August 24, 2022

Presented by: Buna George, Executive Director

Mission Statement

The Greater Yuma Port Authority will develop a gateway for global trade to facilitate, promote and support multi modal transportation and trade opportunities to enhance the economic development in the Greater Yuma area.



GYPA

**Greater
Yuma
Port
Authority**

Board Members



- Gary Knight
- Wayne Gale

City of
Yuma

City of
San Luis

- Matias Rosales
- Frank Rascon



Cocopah
Tribe

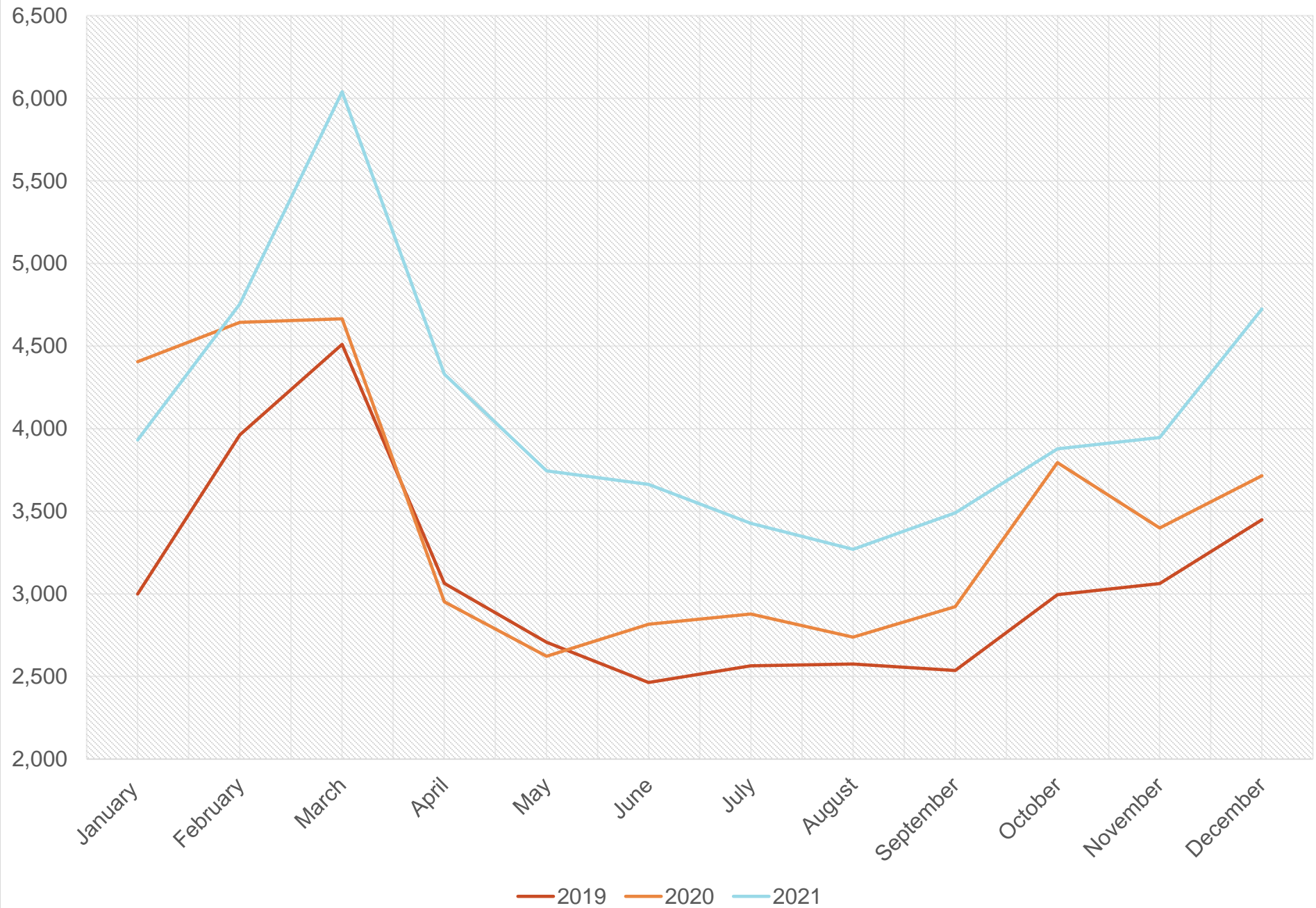
Yuma
County

- Gary Magrino
- Eric Holland

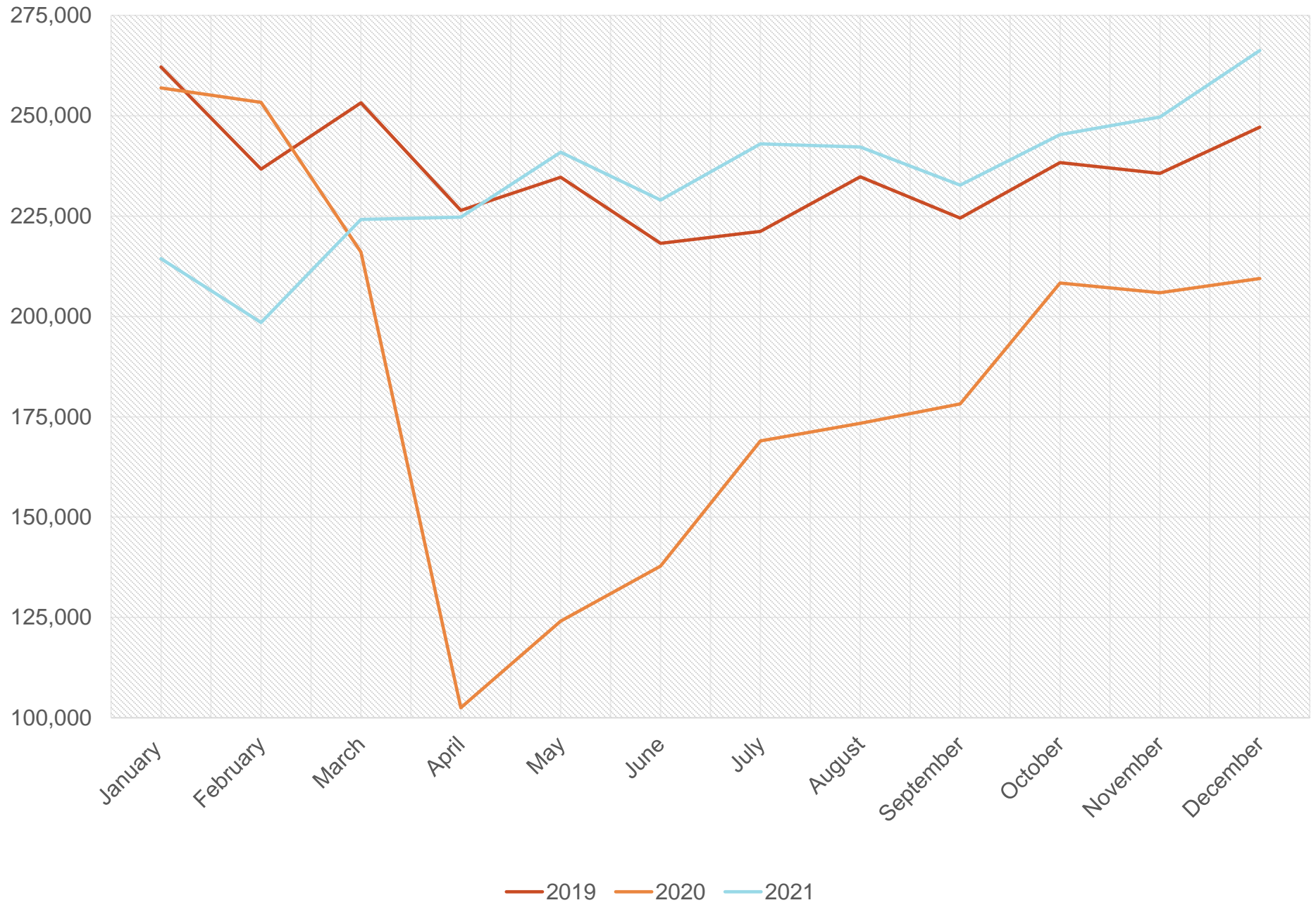
- Tony Reyes
- Ian McGaughey



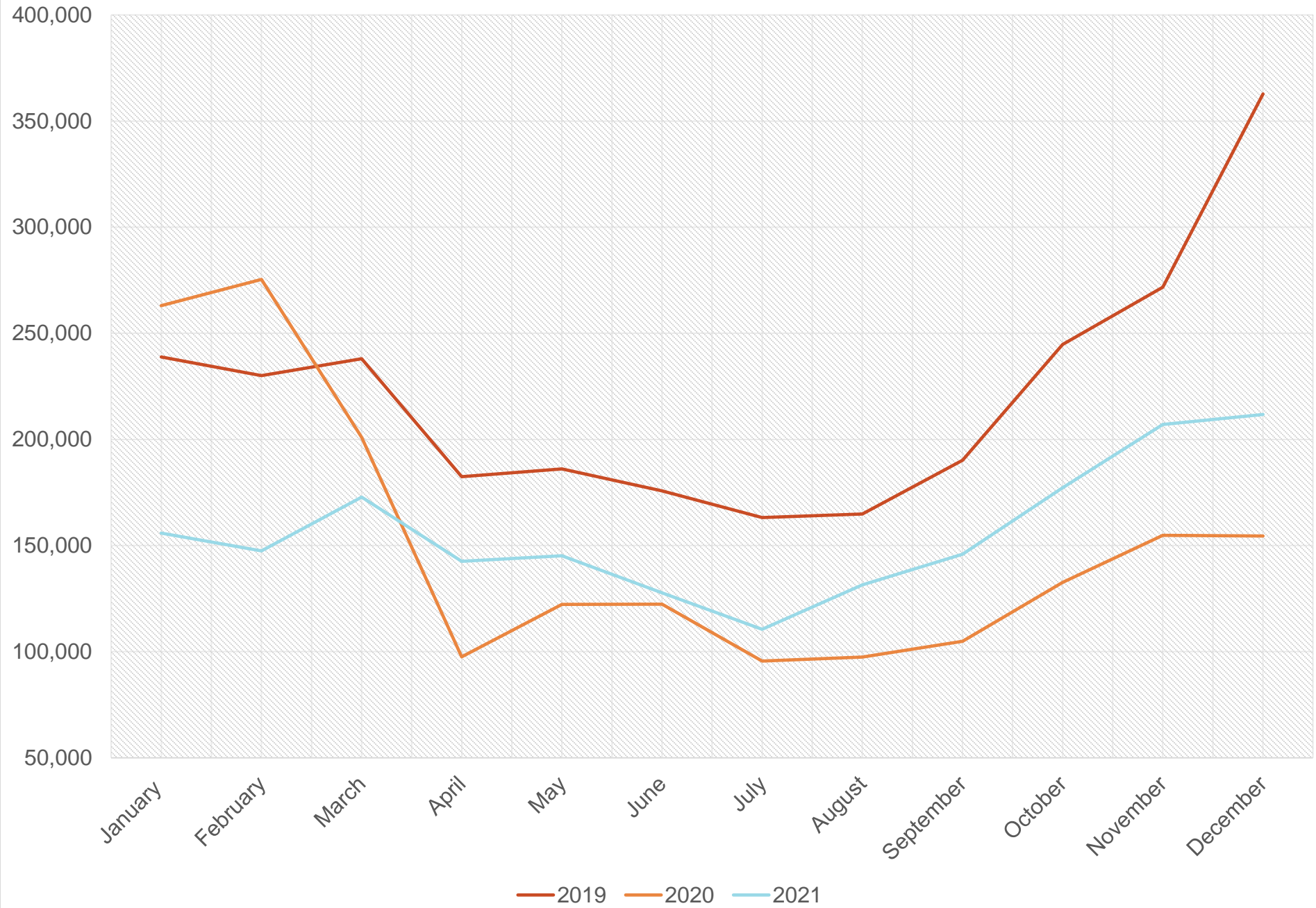
Commercial Vehicles



Private Vehicles

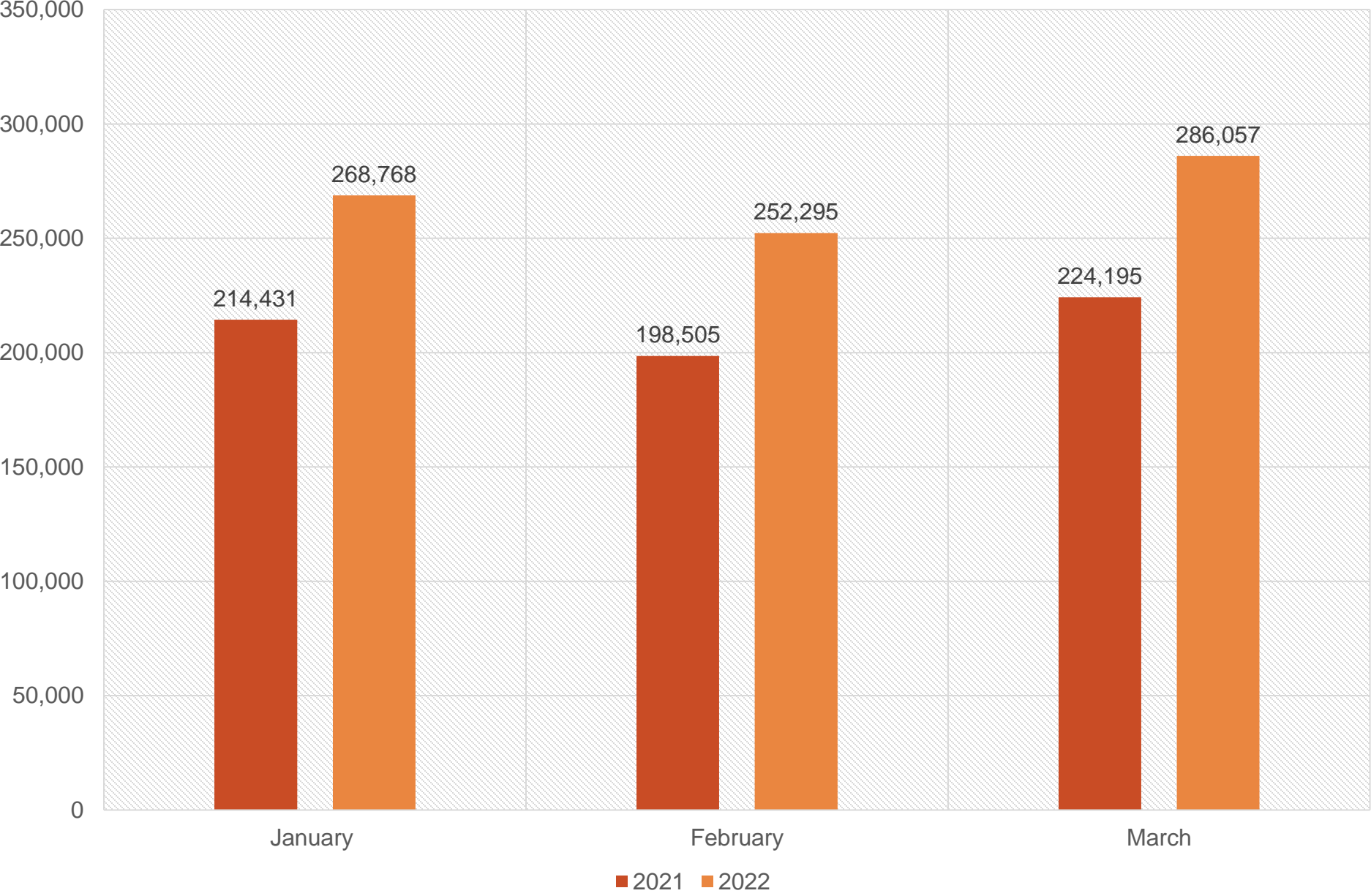


Pedestrian



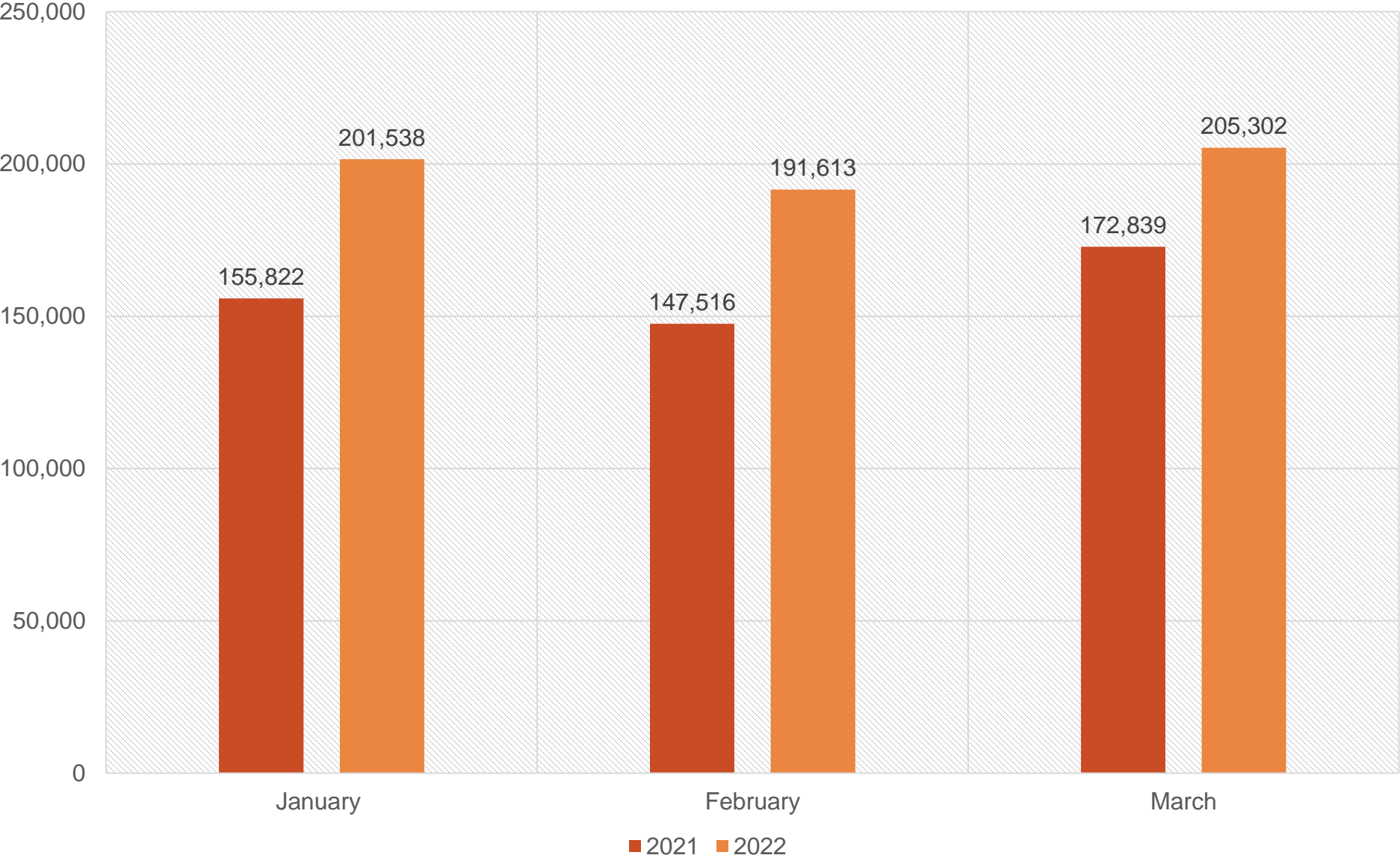
Private Vehicles

Q1 Comparison 2021/2022

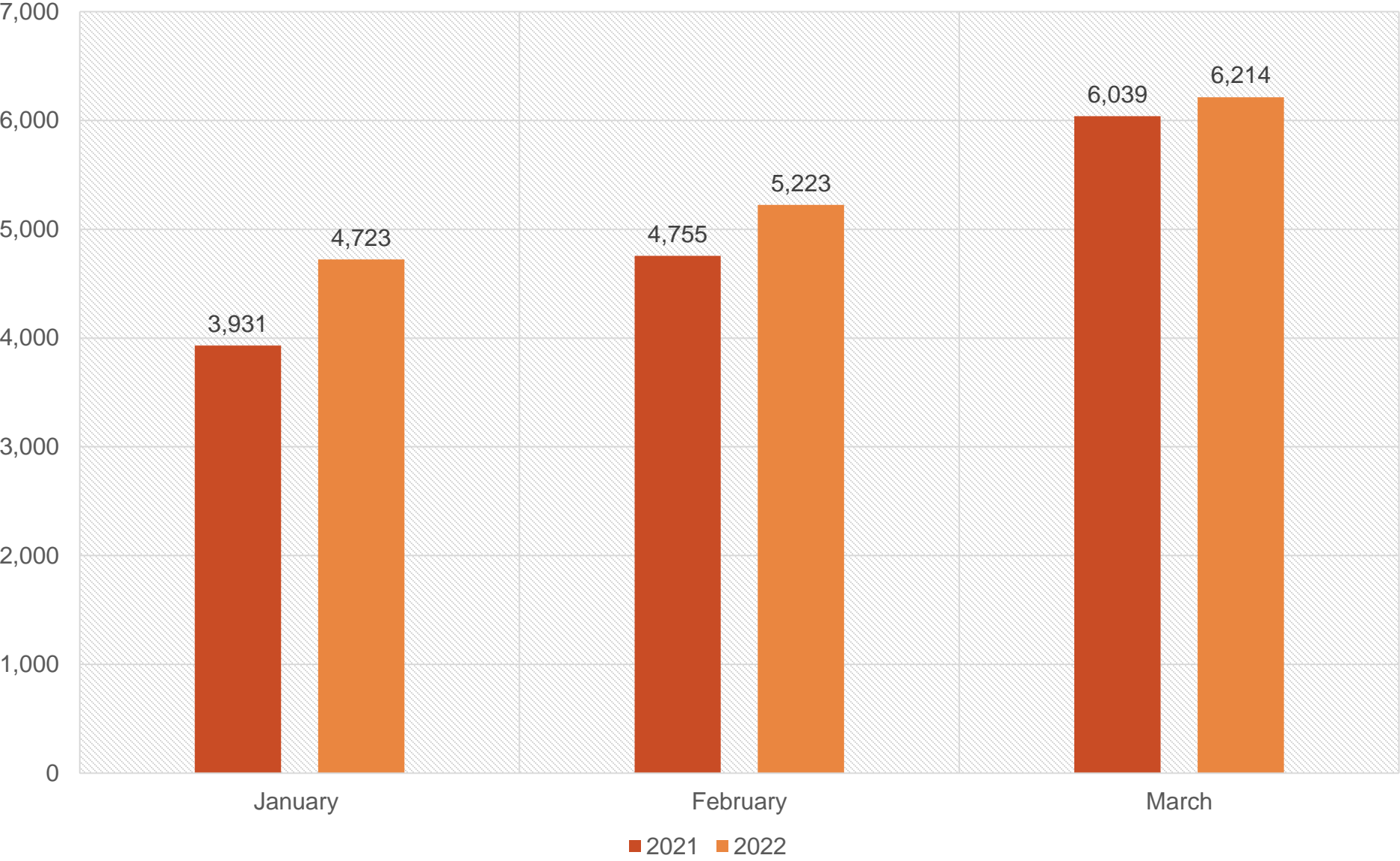


Pedestrians

Q1 Comparison 2021/2022



Commercial Vehicles Q1 Comparison 2021/2022




San Luis I LPOE - Alignment Confirmation Requested



Mexico - please confirm these alignments:

*All points are diagrammatic and approximate.


Southbound Pedestrian  Proposed southbound pedestrian crossing (east of southbound POV to avoid pedestrian/POV conflict).

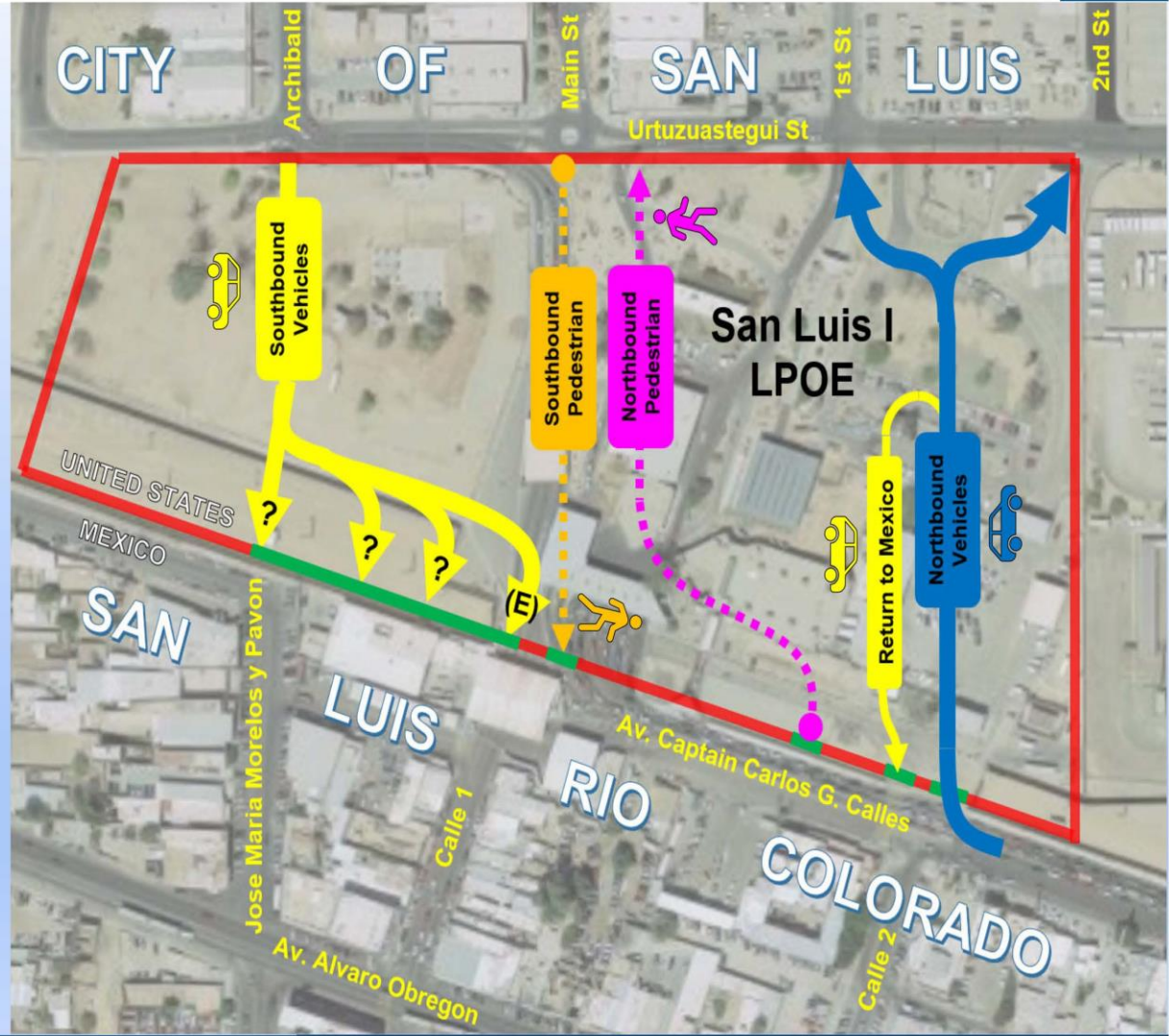
Northbound Pedestrian  Proposed northbound pedestrian crossing.

Return to Mexico  Proposed return to Mexico adjacent to proposed northbound POV.

Northbound POV  Proposed northbound POV at old truck.

Mexico - please propose the SB alignment:

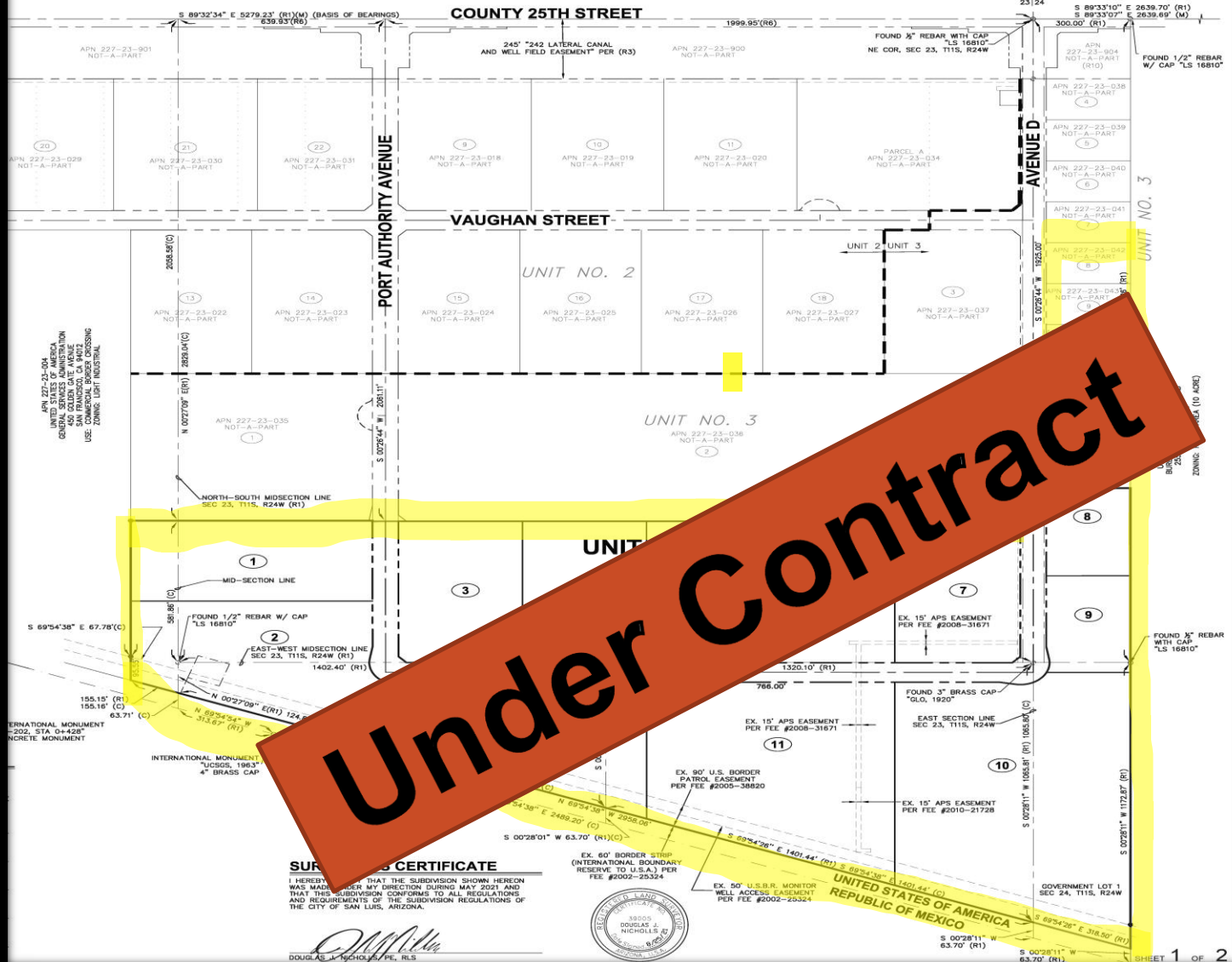
Southbound POV  The U.S. asks that Mexico propose a new southbound vehicle crossing point. Absent a commitment, the U.S. will build to the existing (E) southbound POV crossing at Calle 1.



Gary J. Magrino Industrial Park

- In conjunction with Yuma County ARPA Funds allocation and an independent loan agreement, the full development of the Gary J. Magrino Industrial Park is underway!
- Express gratitude on behalf of the GYPA for the Counties assistance, especially Frank and Jason in Engineering for their guidance and hands on direction.
- With the development contract being awarded to DPE and a timeline in place...

AL PLAT MAGRINO INDUSTRIAL PARK UNIT NO. 4
 DIVISION OF TRACT B OF MAGRINO INDUSTRIAL PARK UNIT NO. 3 PER BOOK 31 OF PLATS, PAGE 61-63
 LOTS 23 AND 24, TOWNSHIP 11 SOUTH, RANGE 24 WEST, GILA AND SALT RIVER BASE AND MERIDIAN, YUMA COUNTY, ARIZONA.
 NUMBER OF LOTS: 12 INDUSTRIAL LOTS



Under Contract

SURVEYOR'S CERTIFICATE
 I HEREBY CERTIFY THAT THE SUBDIVISION SHOWN HEREON WAS MADE UNDER MY DIRECTION DURING MAY 2021 AND THAT THIS SUBDIVISION CONFORMS TO ALL REGULATIONS AND REQUIREMENTS OF THE SUBDIVISION REGULATIONS OF THE CITY OF SAN LUIS, ARIZONA.

Douglas J. Nicholls
 DOUGLAS J. NICHOLLS, P.E., R.L.S.



UNITED STATES OF AMERICA
 REPUBLIC OF MEXICO

Gary J. Magrino Industrial Park

- GYPA came to a mutual agreement with a non-profit corporation and the remainder of the Magrino Industrial Park is under contract for purchase. All 86 acres.
- Escrow was opened July 2022.
- This partner has the vision and the means to develop and build to suite options and is excited to partner with Port Users, Yuma's current and future Industries and has begun conversations with the regions Economic Development representatives.
- One of GYPA's principal functions was to *support trade opportunities to enhance economic development within the Greater Yuma area*. Thus, fulfilling another part of its mission statement.



Border Liaison Unit:

- IBIQ: International Border Inspection Qualification
- Trainings provided by ADOT for port users and industry as requested
- Train and prepare drivers as to the ADOT requirements
- This program is a means to reduce out of service and tagged commercial vehicles
- This ensures the expediting of loads and lessening interference of time to market based on mechanical failures



Commercial Vehicle Enforcement Task Force

- ADOT, DPS, FMCSA
- GYPA and Yuma County representatives met with Lt. Colonel Timothy Cheung, leadership for this new task force.
- streamlining ADOT's enforcement services bureau with a single management structure is a better use of personel, sues financial resources more wisely and strengthens public safety for everyone who travels the Arizona roads".



NASCO

- GYPA is an official member of NASCO network as of 2021.
- Executive Director Buna George was able to attend their annual Reunion in San Luis Potosi July 2021. In networking and meeting the many industry leaders present, Buna felt joining a well-connected network such as NASCO would bring great value to the GYPA Mission.
- NASCO is the leading organization focused on the competitiveness of the North American supply chain and closing the skilled workforce gap. We are the only tri-national network of the North American governments, business, and educational institutions, driven by a common interest in collaboration along commercial corridors and trade networks.



NASCO



LAND PORTS OF THE FUTURE WORKSHOP

MARCH 24-25, 2022

TEXAS A&M INTERNATIONAL UNIVERSITY STUDENT CENTER BALLROOM LAREDO, TEXAS

AGENDA

THURSDAY MARCH 24, 2022

- 08:00 - 09:00** Sign-in, coffee and light refreshments
- 09:00 - 09:15** **Dr. Pablo Arenaz, President of Texas A&M International University**
Host Welcome and Introduction
Dr. Katie Turnbull, Executive Associate Director of Texas A&M Transportation Institute
Dr. Gregory Pompelli, Director of Cross-Border Threat Screening and Supply Chain Defense
Mr. Gerald Schwebel, IBC Bank Executive Vice President
- 09:15 - 09:45** **Garrett Wright, Director of the DHS CBP Trade Modernization Office & Vincent Annunziato, Director of the DHS CBP Business Transformation & Innovation Division**
CBP Programs and Policy Aimed at Optimization of Secure and Efficient Land Port Trade – At the Border and Beyond
- 09:45 - 09:55** **Armando Taboada, Assistant Director Field Operations - Trade at CBP Laredo Field Office**
Laredo District: Past, Present, Future
- 09:55 - 10:30** Morning Q&A With Speakers
- 10:30 - 10:45** Coffee Break
- 10:45 - 11:05** **Adam Sulewski, U.S. Customs and Border Protection Trade Representative – México**
Trade Security and Facilitation- The U.S. CBP Looks Forward Through the Lens of the USMCA
- 11:05 - 11:25** **Ms. Amy Cloud, Visiting Faculty, U.S. Coast Guard Academy**
Supply Chain Security in Latin America
- 11:25 - 11:45** Pre-lunch recess
- 11:45 - 12:45** **Francisco Jaime King Cancino, Chair of the World Customs Organization Private Sector Consultative Group and Past-Chair of the International Federation of Customs Brokers Associations**
Lunch Keynote - Efficiency at Borders: Challenges and Opportunities
- 12:45 - 13:15** Afternoon Q&A with Speakers
- 13:15 - 13:35** **Juan Carlos Villa, TTI Latin America Regional Manager**
Overview of Land Port-Related Research and Programs- Highlighting "Border Wait Times Project," Border Wait Times Dashboard, and Enhanced
- 13:35 - 13:55** **Dr. Steve Liu & Dr. Matt Cochran-Cross-Border Threat Screening and Supply Chain Defense**
Scalable, Immutable, and Privacy-Protected Trade Event Logging- Verifiability at the Interface Between Supply Chains, U.S. CBP, and Partner Government Agencies
- 13:55 - 14:10** **Dr. Steve Roop**
FSX Freight Shuttle Xpress Overview
- 14:10 - 14:25** **Dr. Daniel Covarrubias- Texas Center for Border Economic & Enterprise Development**
Logistics: The Impact of Exponential Technologies on International Trade
- 14:25 - 14:40** Coffee Break
- 14:40 - 15:00** **Workshop Topic #1 - Technology - Identifying Applications of Emerging Technologies that can Improve the Border Crossing Process**
- 15:00 - 15:10** Reports from Workshop Topic #1
- 15:10 - 15:30** **Workshop Topic #2 - Infrastructure - Infrastructure Development that help Increase Competitiveness and Streamline North American Supply Chains**
- 15:30 - 15:40** Reports from Workshop Topic #2
- 15:40 - 15:50** Closing Remarks and Path Forward
- 18:00 - TBD** **Welcome Reception - Hosted by IBC Bank (2418 Jacaman Road, Laredo, Tx. 78041)**

FRIDAY MARCH 25, 2022

- 09:00 - 11:30** **Port Laredo Site Visit - up to 40 people on visit - participation limited (first come, first served)**





Freight Shuttle System

www.freightshuttle.com

A ZERO-EMISSION VEHICLE (ZEV) SOLUTION FOR OVER-THE-ROAD FREIGHT

A new freight transportation system, based on proprietary technology, electric powered and fully automated, moving truckload freight containers on elevated two-way fixed guideways, utilizing rights-of-way over or next to roadways in highly congested traffic routes.

The Freight Shuttle System benefits the freight delivery supply chain by lowering transportation costs, speeding delivery times, reducing air emissions, enhancing safety for motorists, and producing substantial profits for stakeholders while creating significant societal benefits.

BENEFITS TO THE FREIGHT DELIVERY SUPPLY CHAIN:

- Lower transportation costs providing substantial profits for stakeholders
- Increased security of shipments (elevated guideway, driverless vehicles)
- Alleviates congestion / choke points on roadways and ports of entry
- Less wear on existing infrastructure; reduced maintenance costs
- Scheduled, time-certain delivery provides reliability
- Zero emissions allows for improved air quality
- Nonstop / operates 24/7



Shuttle

zero-emission, automated,
electric

FREIGHT SHUTTLE TECHNOLOGY

The Freight Shuttle moves truck trailers (up to 53 ft.), domestic intermodal containers, and all sizes of ocean shipping containers via emission-free, electric-powered transporters on elevated guideways in the medians of highways or other rights-of-way over distances of up to 500 miles. Freight Shuttle projects will be built in routes in the U.S. and its border areas, where freight transported by trucks (mostly diesel at present and eventually electric as well) moves very slowly, inefficiently and in gridlock due to extreme congestion and choke points. These target project routes will include marine port terminals inland to open roads, border crossings to open roads on both sides of the border, large scale production and/or distribution areas, and other highly congested trucking routes.



Guideway

elevated, secure, small footprint

MARKETS

HIGHWAY CORRIDOR EXPRESS

Connecting large scale production and/or distribution areas, and other highly congested trucking routes.

- Multimodal connectivity
- Direct customer access
- Compatible with existing interchanges
- High capacity (10,000+/day)



CROSS-BORDER EXPRESS

Providing a nonstop link across the border, to inland terminals, while scanning 100% of cargo.

- Eliminates choke point at the border
- Private lane across the border
- Inspect-in-motion
- Direct customer access



SEAPORT EXPRESS

Connects valuable port property to inland land that is more accessible, affordable, and allows ports to increase their capacity without having to sacrifice usable land at the container terminal.

- All elevated
- Small footprint
- Multimodal connectivity



Contact:

Michael Yager,
Chief Development Officer
Michaelyager@freightshuttle.com
(979) 492-9136

COLLABORATIVE APPROACHES AGAINST ILLEGAL TRADE

Thursday, May 12, 2022 | 12:00PM – 3:30 PM

PANEL DISCUSSION



DAVID LAKE
Founder at Center on Shadow
Economics



BUNA GEORGE
Executive Director, Greater Yuma Port
Authority



LUIS RAMIREZ
President of Ramirez Advisors Inter-
National



KRISTIN REIF
Director of Illicit Trade Prevention,
Philip Morris International



MATTHEW ALBENCE
Principal at Grindstone Strategic

Arizona Commerce Authority,
100 North 7th Avenue,
Phoenix, AZ 85007



Action Items

Partnership with University of Arizona for Entomology Solution

Strengthen enterprise with ADOT and DPS

Establish an alternative Truck Route from San Luis II to SR195

Aide in Successful Implementation of Ave D/E Corridor/Somerton

Outreach to Industry, specifically to route to AZ POE's vs. CA

Remain an active partner in the San Luis I Remodel

Mission Statement

The Greater Yuma Port Authority will develop a gateway for global trade to facilitate, promote and support multi modal transportation and trade opportunities to enhance the economic development in the Greater Yuma area.



GYPA

**Greater
Yuma
Port
Authority**



GYPA

**Greater
Yuma
Port
Authority**

Thank you

Yuma County Board of Supervisors

August 15, 2022.

Presented by: Buna George, Executive Director