



# *San Luis City Council Presentation* ROLLE AIRFIELD – SAN LUIS, ARIZONA

Formerly known as Aux 4 – Airport Identifier 44A



February 23, 2022

# **Rolle Airfield is managed and operated by the Yuma County Airport Authority (YCAA)**

## **The Yuma County Airport Authority (YCAA)**

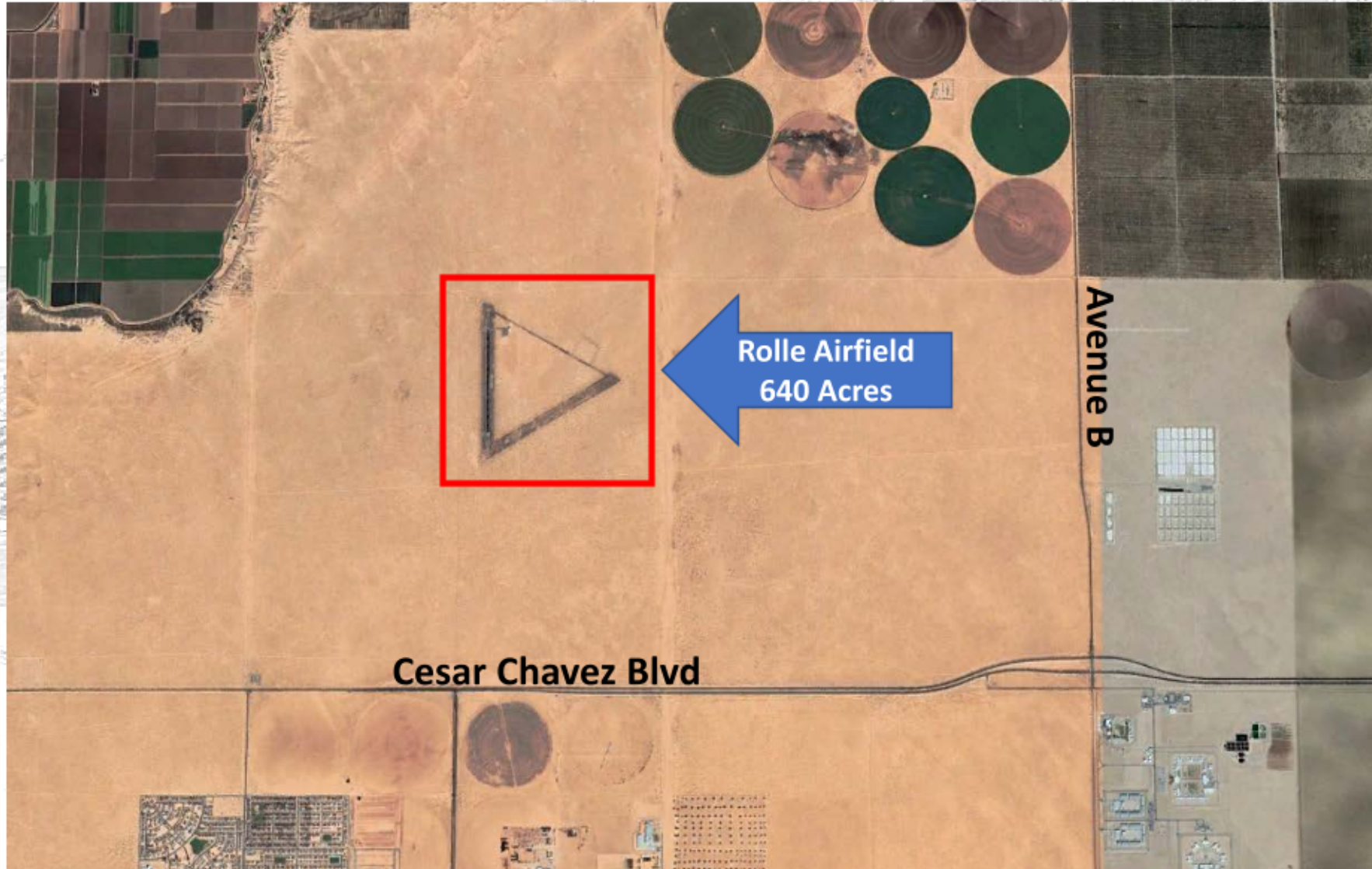
- Was Created in 1965 to Manage the Yuma Airport (Yuma International Airport)
- Leases the Airport property from Yuma County for \$1 Annually
- Is a non-profit corporation
- By the Arizona Revised Statutes, the YCAA is also Governmental Unit
- Receives NO outside Financial Support
- Generates its Revenues at the Airport
  - ✓ No taxes received from State, County, or City to operate
  - ✓ Self supportive
  - ✓ Yuma County is our landlord

**In 1973, the County of Yuma asked the YCAA to Manage Rolle Airfield as its “Agent”**

# Rolle Airfield

- ❑ Small Airport North of Cesar Chavez Blvd on the Avenue E Alignment
- ❑ Rolle Airfield is on 640 acres owned by the US Government, managed by the Bureau of Reclamation (BOR)
- ❑ Rolle Airfield was constructed by the Military in the 1950's
- ❑ Rolle Airfield is "Leased" by the BOR to the County of Yuma

# Rolle Airfield



# Rolle Airfield

- ❑ In 1973 the YCAA was asked by the County of Yuma (known as the “County” or Yuma County) to operate and manage Rolle Airfield as its “Agent”.
- ❑ The YCAA has maintained and improved Rolle Airfield for almost 50 years.
- ❑ The current “License and Contract Agreement” expires in 2024.
- ❑ Airfield maintenance is almost entirely provided by resources generated at the Yuma International Airport
- ❑ Yuma County provides NO financial support directly or indirectly.



## Rolle Airfield Today

- Almost \$700,000 in Improvements
- Resurfaced the 2,800 foot Runway
- Constructed an Aircraft Storage Hangar
- 8' high Perimeter Fence / Access Control
- Aircraft Parking Apron
- Lack of Utilities Resolved by:
  - Electrical Generator, Water Well & Septic



# Rolle Airfield Improvements



# Rolle Airfield Today



# Rolle Airfield Today

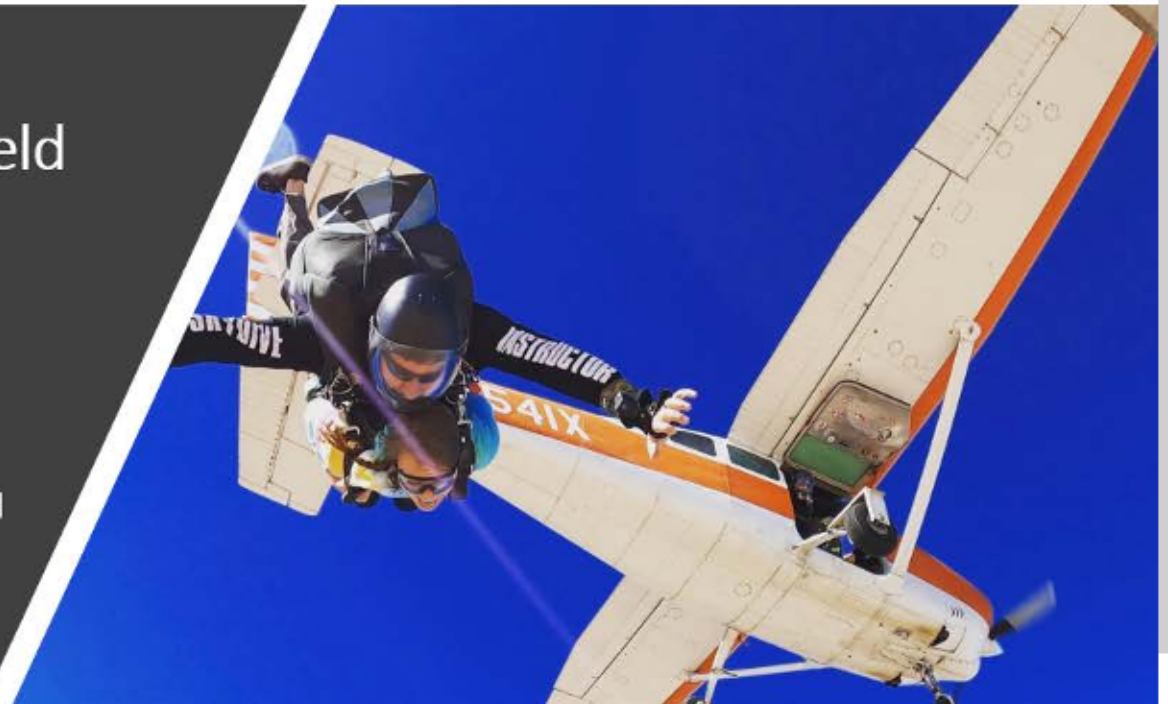
- ❑ Improvements have generated a small amount of lease revenues over the years
  - Five-year lease to Defense Contractor – Drones
  - Short term leases to a variety of contractors
  - Current short-term sublease with Skydive San Luis
- ❑ The YCAA has entered into an on-site “caretaker” agreement, who is also the Airport Maintenance Supervisor with the following obligations:
  - Provide security
  - Identify maintenance needs
  - Improve emergency response

# Skydive San Luis



## Skydive San Luis at Rolle Airfield

Skydive San Luis is Yuma County's premier skydiving destination. Located at Rolle Airfield, the 'highly' experienced team offers unforgettable Tandem experiences at some of the industry's lowest prices. Great ideas for birthdays, bachelor or bachelorette parties, and bucket listers, its all a great reason to come out and enjoy Yuma from the best view in town! Find them on Facebook to see the action and book your adventure!

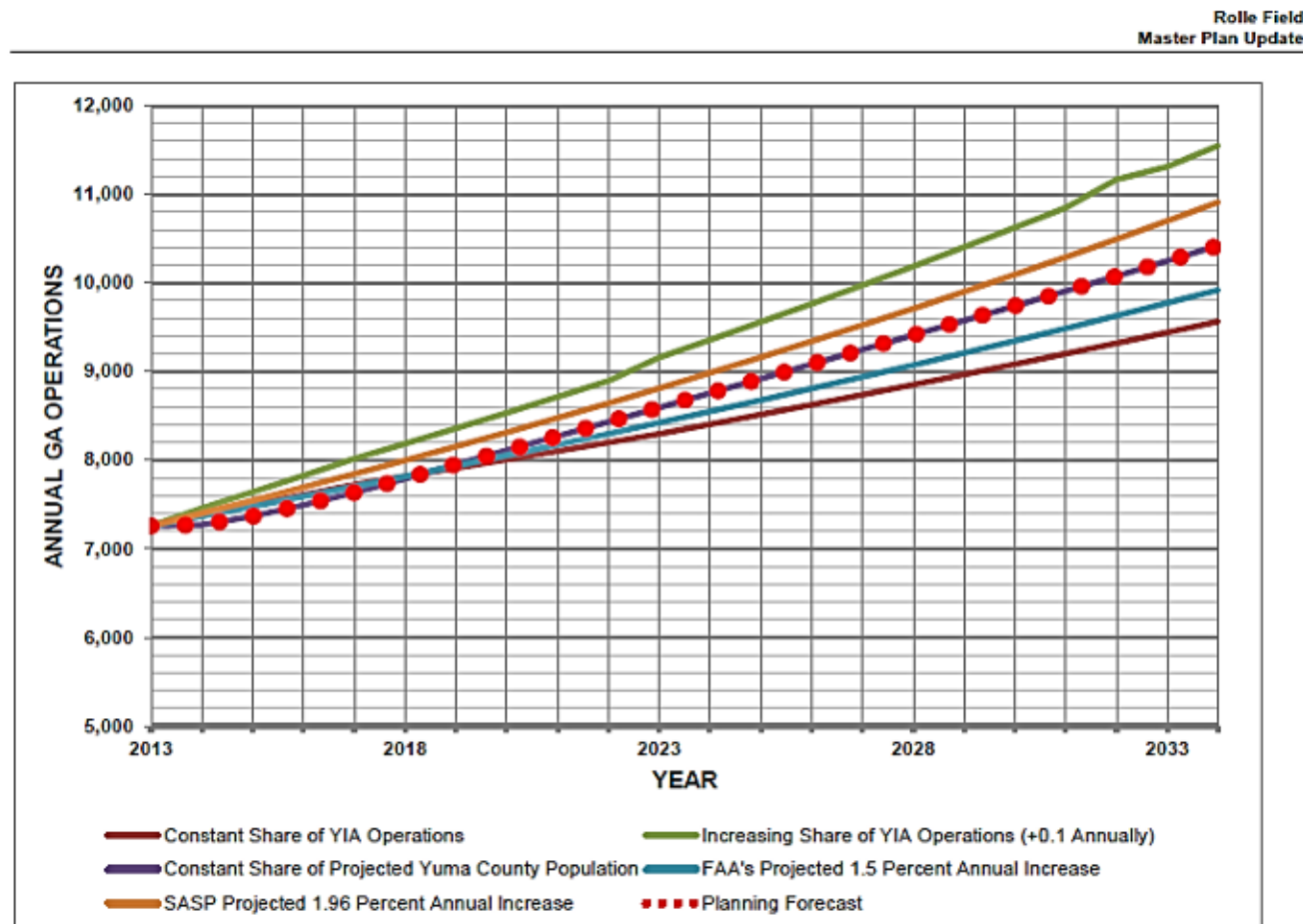


# Rolle Airfield – Moving Forward

- ❑ The Lease for Rolle Airfield expires in 2024
  
- ❑ In order to renew the agreement, the BOR requires:
  - Rolle Airfield Masterplan which presents our intended development of their land
  - Environmental Review
  
- ❑ The YCAA has completed both requirements using its own resources

# Rolle Airfield – Moving Forward

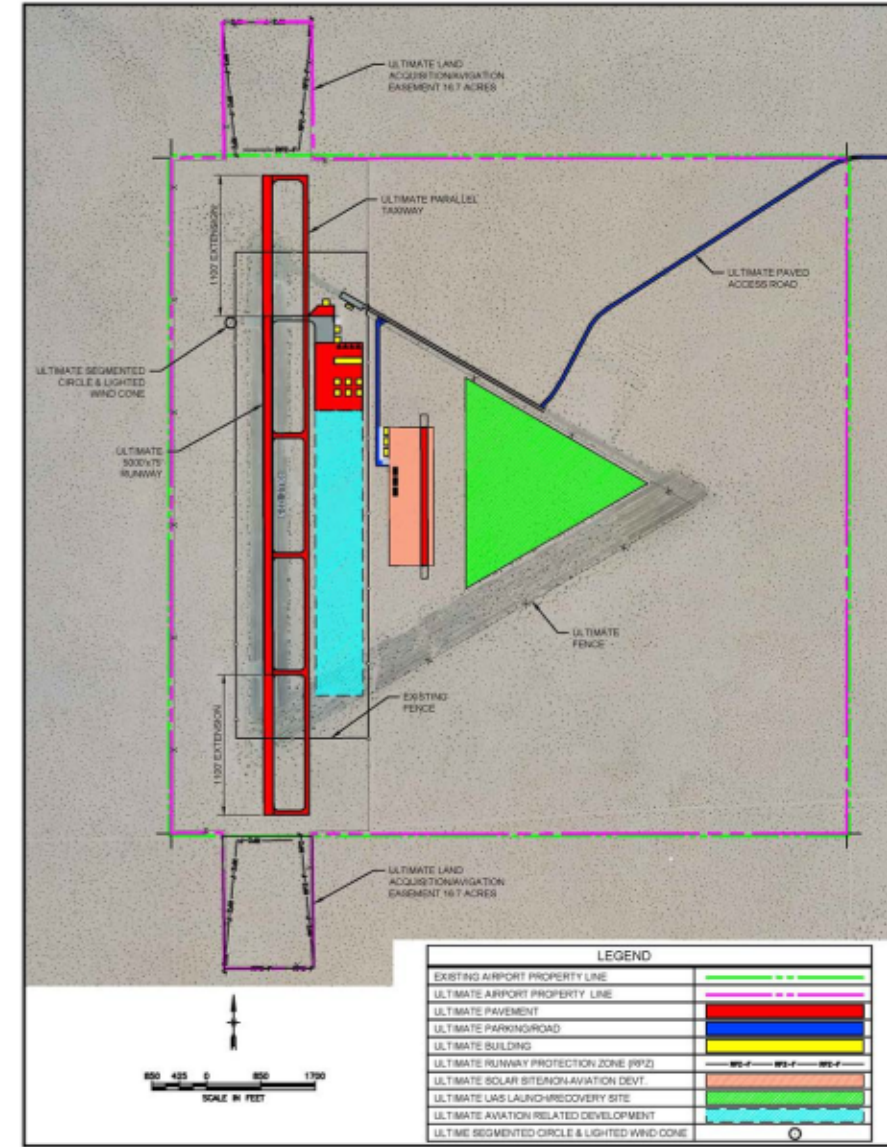
The Masterplan identified continued growth in the number of operations at Rolle Airfield.



# Rolle Airfield – Development

## Capital is necessary to continue development

The resources necessary to make these improvements can be very expensive and tasking for municipalities due to the actual return on investments- this is not a revenue generating airfield

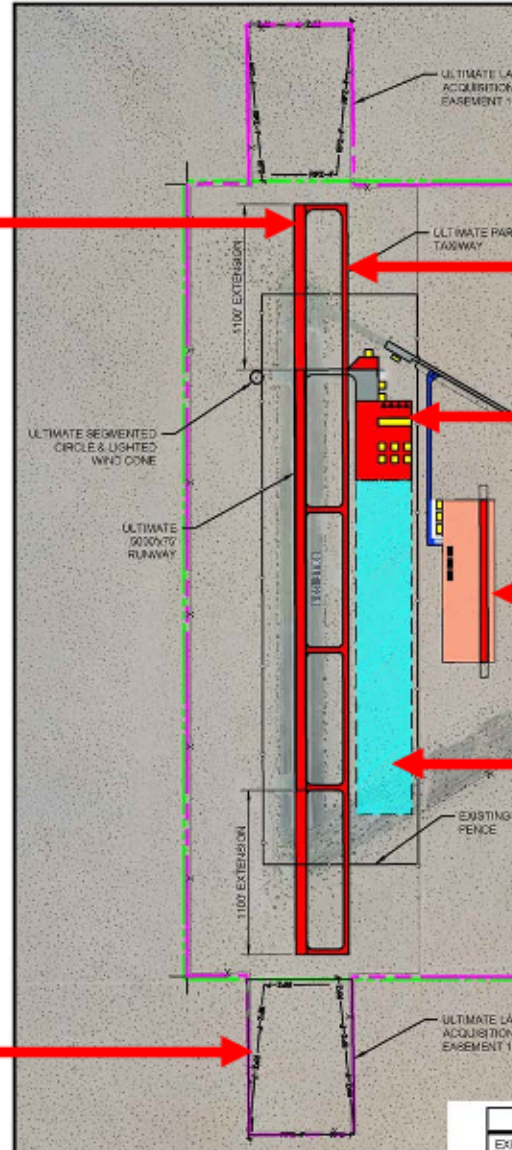


# Rolle Airfield – Future Master Plan Layout

Extend Runway to 5,000'

Pave to property line

Obtain Avigation Easements



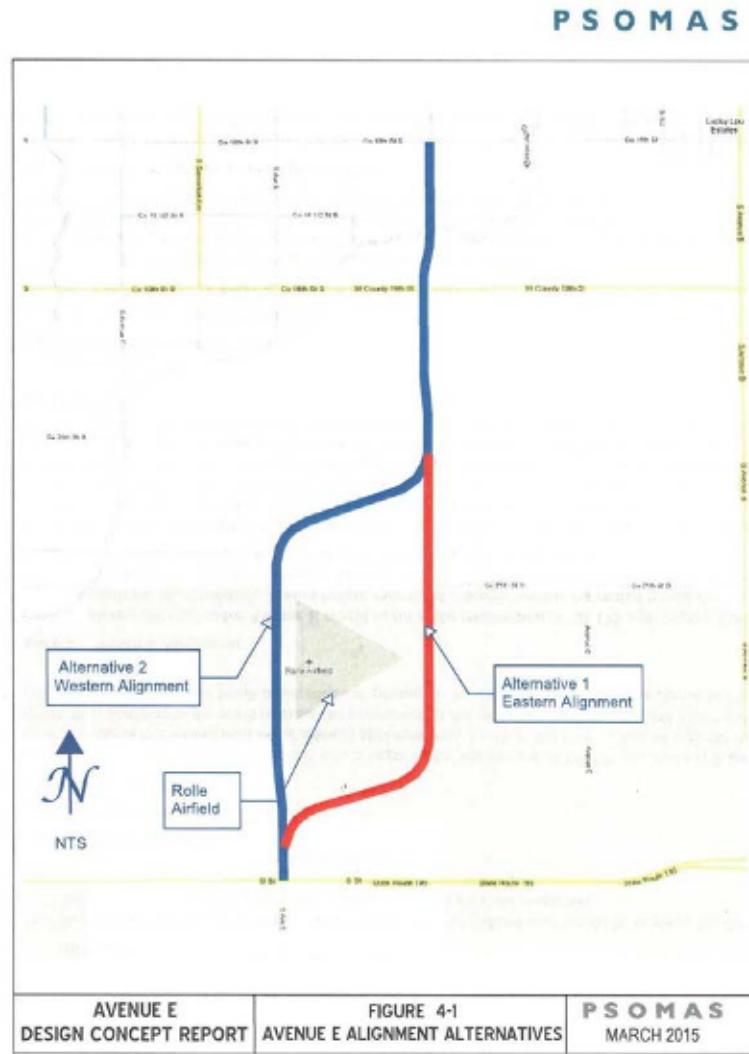
Construct Parallel Taxiway

Additional Hangars, office spaces & apron

Small operating field for smaller platforms (sUAS)

Ramp expansion

# Rolle Airfield – City Road Development & Future Access



March 2015

Alternate 1: The EASTERN ALIGNMENT is the road configuration the YCAA supports for the future development and access to Rolle Airfield.

# Rolle Airfield – The Future

- The YCAA can obtain future capital improvement grants from ADOT but CANNOT use them for Rolle Airfield because it is not the “Lessee” (licensee) on the agreement with the BOR.
- The YCAA has proposed the County terminate its current agreement with the BOR and allow the YCAA to become the Licensee on a new agreement.
- The BOR has agreed to this, as long as the Yuma County agrees.
- Yuma County has interest regarding the opinion of the City of San Luis.

# Rolle Airfield – The Future

- ❑ San Luis needs to consider the development of the Airport
  - Renewing the Lease with Yuma County as the Licensee may hinder development of the Airport
  
- ❑ If City of San Luis were to consider becoming the Licensee, and begin to manage and develop the airport itself, consideration of the following:
  - In-house Subject Matter Experts who understand the funding assurances, regulatory obligations and state/federal criteria from planning, design and management of an Airport
  - Allocating resources and cost of resources to maintain an airfield to standard
  - The Airfield currently generates less than \$12,000 annually and costs \$83,500 per year to manage, maintain, patrol and secure

# Rolle Airfield – The Future

- If the City of San Luis agrees that allowing the YCAA to become the “Lessee” to the BOR’s lease for Rolle Airfield, the YCAA is asking that the City Council consider directing staff to communicate this, in writing to the County of Yuma.
- The BOR has already drafted a proposed agreement to this end. It has been provided to City Staff for review.

# Rolle Airfield – The Future

- ❑ The City and County have both enjoyed the successful management of both Airports by the YCAA for almost 60 years:
  - The management of the Airports does not cost the City and County
  - The Airport is a significant driver of economic activity
  - There are inherent risks operating an Airport, the YCAA provides a significant barrier of any liability to the City and County.
  - The YCAA management of the Airports has resulted in almost \$50 million in capital improvements

# Rolle Airfield – Opportunities

## Unmanned Aerial Systems

- Research and Development : U of A
- OTE: Navmar, Grumman, Boeing, Lockheed, AV

## Sensors

- R&D – Compass Systems, SAIDS, RRTO, Textron

## Agriculture

- John Deere: Unmanned Planting, Applicators, Harvesting
- Local Growers: Unmanned Harvesting

# Role Airfield – Opportunities



***NORTHROP GRUMMAN***



**LOCKHEED MARTIN**



**Raytheon**



 **BOEING**



# Role Airfield – Opportunities

- ❑ General Aviation (Private) Aircraft Access to South County
  - Corporate decision makers do not fly commercial
  - Government Agencies
  - Municipal Officials
  - Border Security

# The YCAA Works for South County

- Our Mission is to Promote and Foster Civil Aviation
- Work everyday to improve and expand the only public use airfield in San Luis, Arizona
- Provide investments in South County aviation at no cost or obligation to the City of San Luis

# Our Airport is Committed to

- ❑ Creating economic growth and business opportunities by marketing our assets and highlighting community support
- ❑ Focusing on industry demands and changes
- ❑ Ensuring Safety and Security of both Airports
- ❑ Ensuring the health of our customers, stakeholders and team members
- ❑ Providing excellent customer service



## Questions & Discussion

Yuma International Airport & Rolle Airfield

*Gladys Brown, C.M., C.A.E.*

Airport Director

Gladys@YumaAirport.com

Phone: 928-726-5882 x2217



*Gen Grosse*

Property & Community Relations

Gen@YumaAirport.com

Phone: 928-726-5882 x2211

**FLY LOCAL – FLY SAN LUIS**

