



Planning and Zoning Meeting

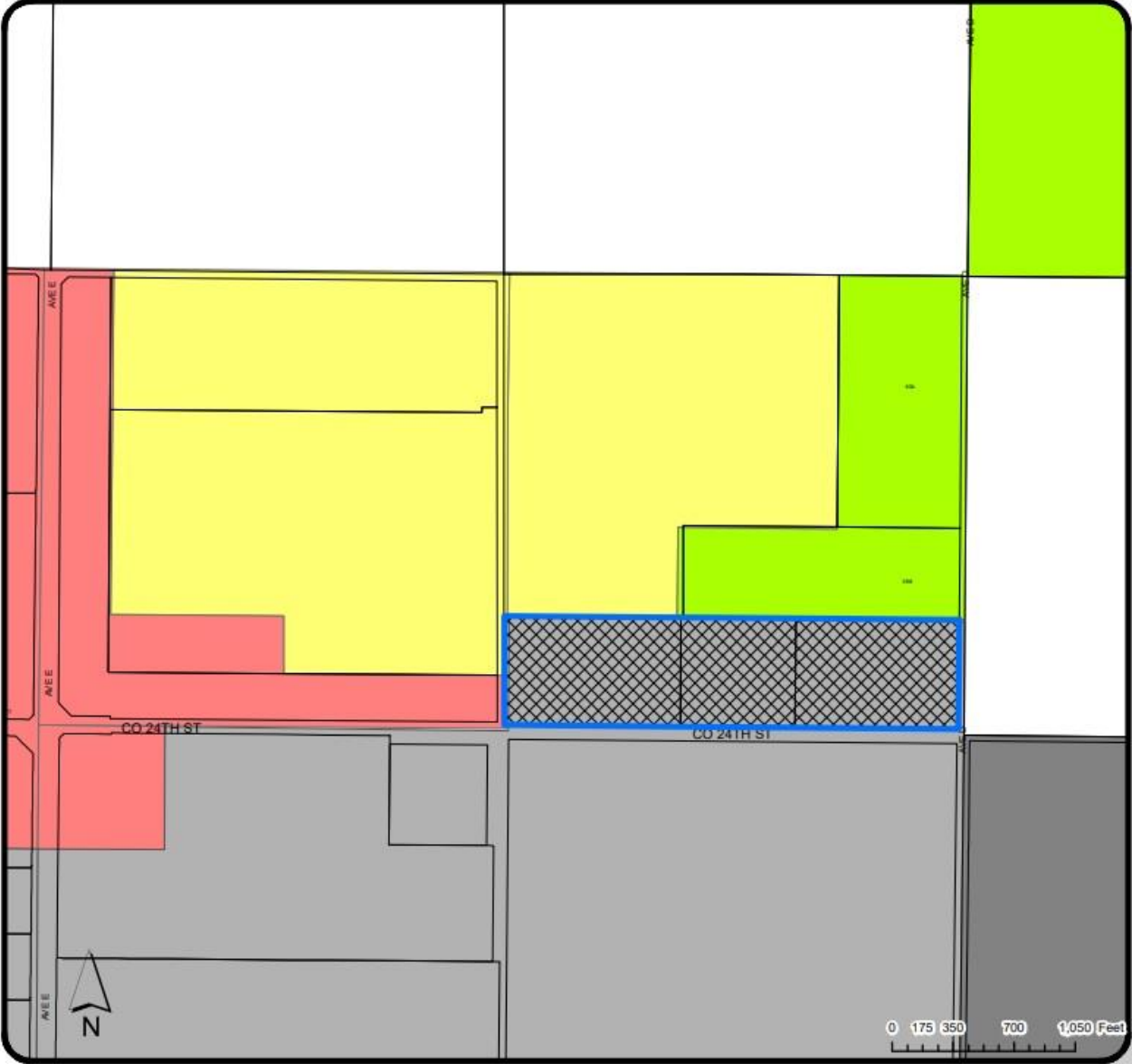
September 13, 2022

Subdivision Case No. 2022-00205P

Request: By Vega & Vega Engineering on behalf of Von Verde Development LLC. for the approval of the Preliminary Plat of the Southwest Arizona Industrial Subdivision Phase 2.

- ⦿ The property is located on the northeast corner of Avenue D 1/2 and County 24th Street in San Luis Arizona.

Subdivision Case No. 2022-0205P



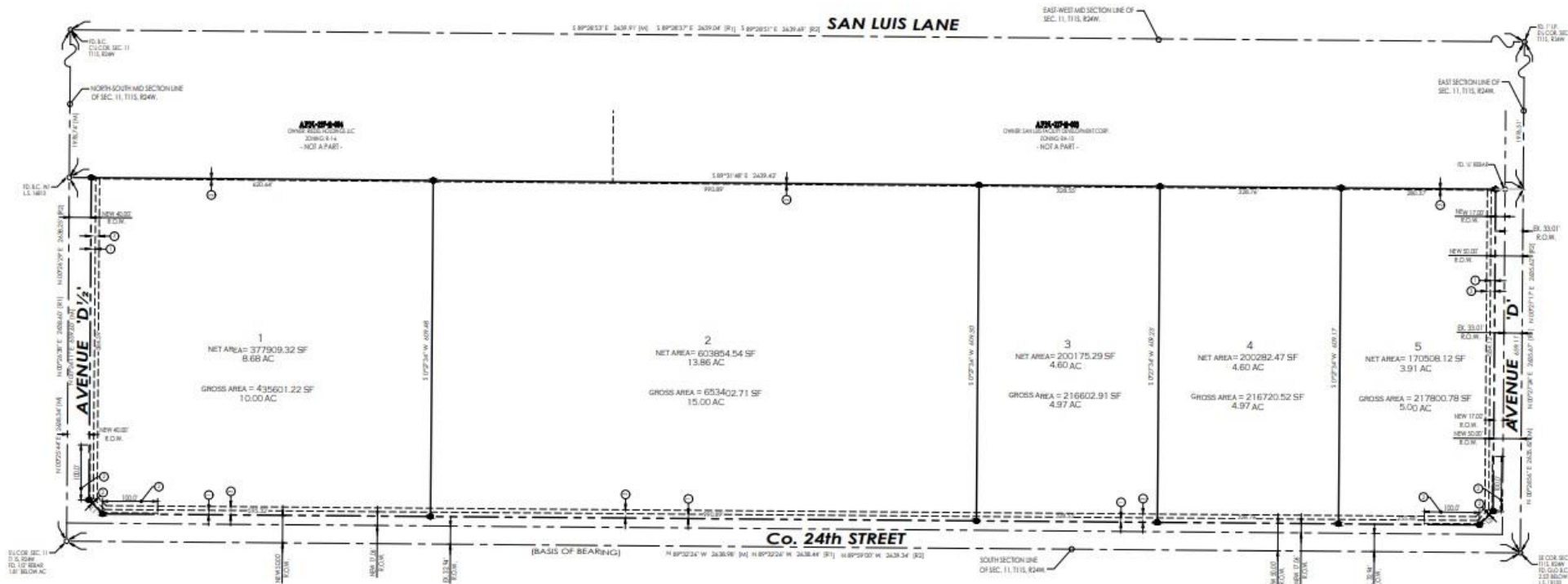
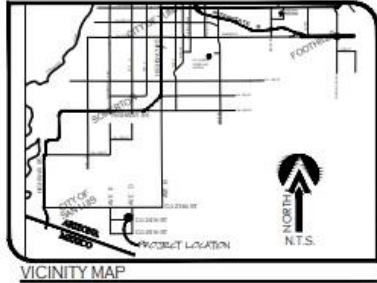
Vicinity Map

Subdivision Case No. 2022-0205P

SOUTHWEST ARIZONA INDUSTRIAL SUBDIVISION - (PHASE 2)

A SUBDIVISION OF A PORTION OF THE S $\frac{1}{2}$ OF THE SE $\frac{1}{4}$,
SECTION 11, T11S, R24W, G.&S.R.B.&M., YUMA COUNTY, ARIZONA.
MARCH OF 2022 ACREAGE: 39.95 AC

PRELIMINARY PLAT



Subdivision Case No. 2022-0205P

Staff Recommendation:

Staff recommends approval of Subdivision Case No. 2022-0205P WITH A CONDITION

Recommended Motion:

- ⦿ **I MOVE TO APPROVE THE PRELIMINARY PLAT FOR THE SOUTHWEST ARIZONA INDUSTRIAL SUBDIVISION PHASE 2 WITH THE CONDITION THAT THE APPLICANT ADDRESSES REVIEW COMMENT LETTER DATED JUNE 7, 2022 AND PUBLIC WORKS COMMENT LETTER DATED AUGUST 18, 2022.**