

CONSTRUCTION PLANS FOR FLITE BANKING CENTERS, LLC.

ADDITION OF ATM DRIVE-UP IN EXISTING WALMART #4337 PARKING LOT

1613 N. MAIN STREET
SAN LUIS, AZ 85349



FLITE BANKING CENTERS, LLC.
8955 KATY FREEWAY
SUITE 107
HOUSTON, TX 77024
PH: (281) 886-3734

REVISIONS		
NO.	DATE	DESCRIPTION

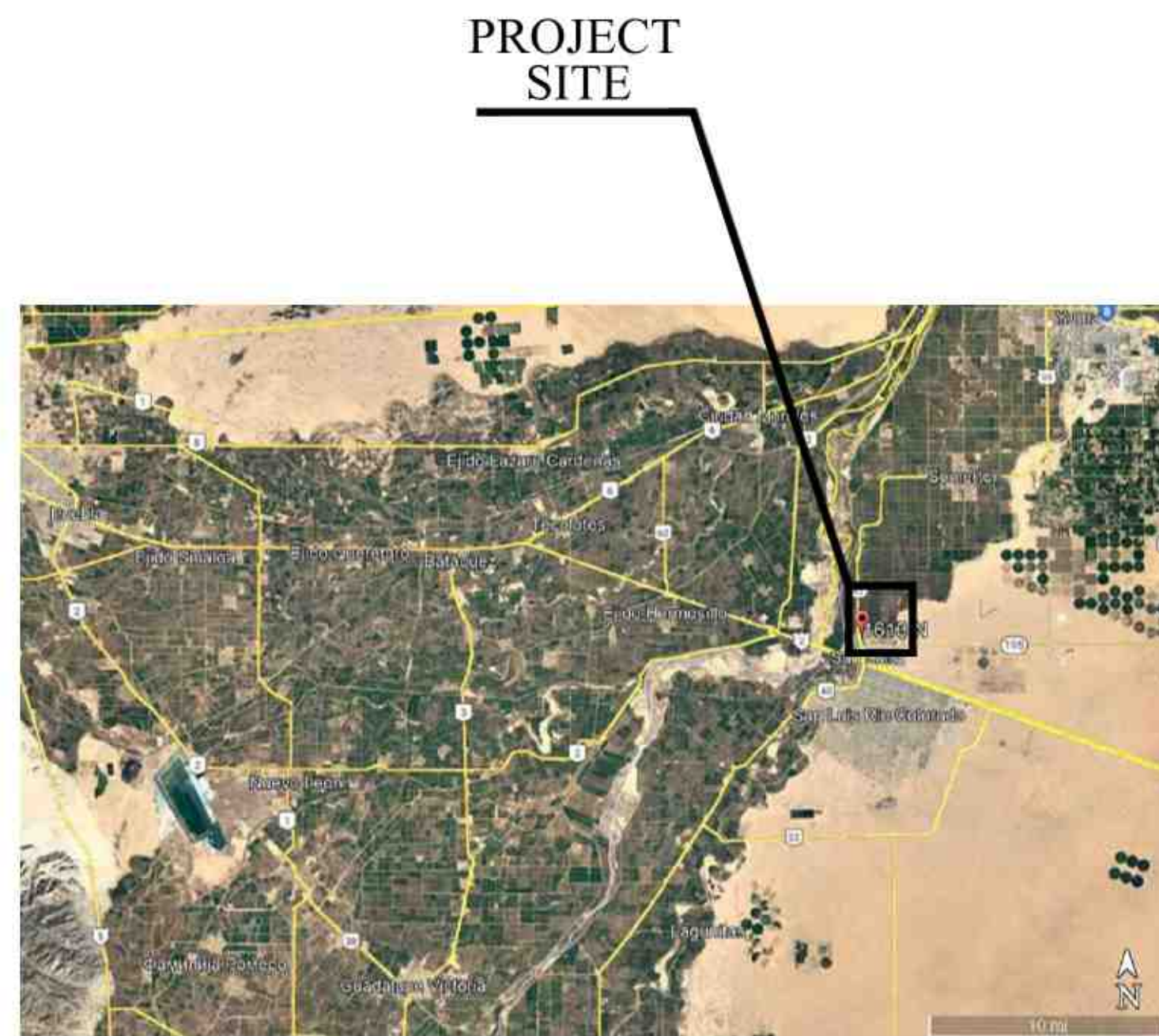
FLITE BANKING CENTERS, LLC.

1613 NORTH MAIN STREET
SAN LUIS, AZ 85349

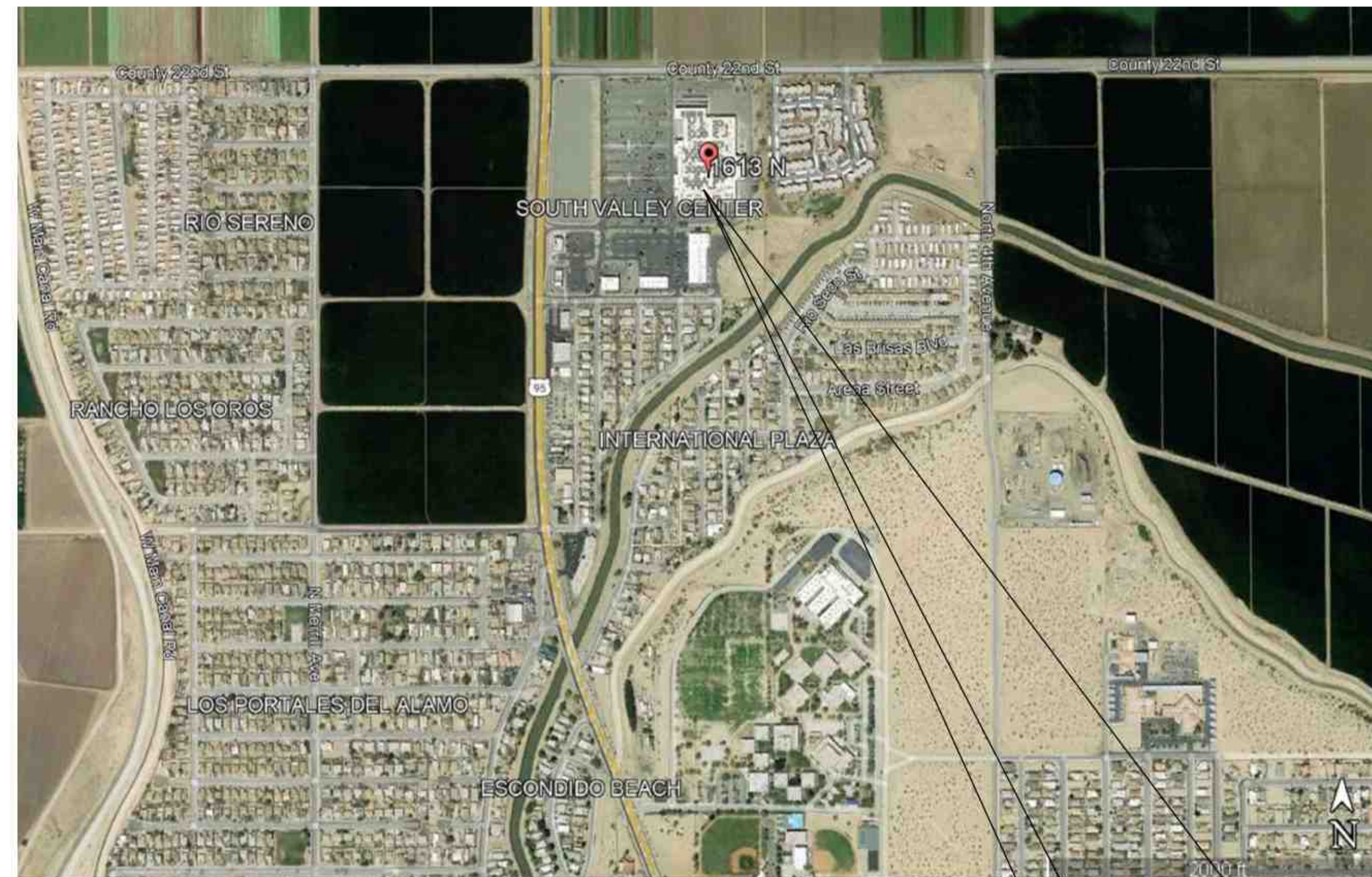
TITLE PAGE

PROJECT NO:
DATE: 9/10/2022
DRAWN BY: DLD
CHECKED BY: ---

SHEET
A0.0



VICINITY MAP
GOOGLE MAPS ©



PROJECT
LOCATION

1613 NORTH MAIN STREET
SAN LUIS, AZ 85349



INDEX OF DRAWINGS:

SITE PLAN DRAWING:

- A0.0 - TITLE SHEET
- A1.0 - SITE LOCATION
- A1.1 - EXISTING/DEMOLITION SITE
- A2.0 - PROPOSED/PEIR SITE PLAN
- A3.0 - ATM / BOLLARD LAYOUT PLAN

ELECTRICAL DRAWINGS:

- SE1.0 - ELECTRICAL SITE PLAN, FIXTURE SCHEDULE, AND RISER DIAGRAM
- SE2.0 - ELECTRICAL SCHEDULE & DETAILS
- SS1.0 - STRUCTURAL DETAILS

PROJECT INFORMATION

SCOPE OF WORK: ADDITION OF A SINGLE
ATM LANE DRIVE-UP IN AN
EXISTING PARKING LOT

LEGAL DESCRIPTION: PARCEL #009-00-697

KEY NOTES

1. THIS LOCATION USES 8 EXISTING PARKING SPACES.
2. CONSTRUCTION AREA IS CONCRETE, ONLY ISLAND, PIERS, AND TRENCHES WILL BE REMOVED.
3. ALL CURBS, INCLUDING ISLAND CURBS, WILL BE PAINTED WHITE.
4. ALL CURBS SHOULD HAVE A TROWEL LINE 6" FROM FACE OF CURB. FACE OF CURB TO TROWEL LINE SHOULD BE PAINTED WITH TRAFFIC WHITE PAINT FOR CONCRETE.
5. DIRECTIONAL ARROWS AND "ENTER" & "EXIT" MESSAGING WILL BE PAINTED WHITE.
6. ALL LIGHT POLE COLUMNS WILL BE FINISHED SMOOTH.
7. BOLLARD WILL BE PAINTED, HAVE SHALLOW DOME CAP, AND SIT 48" ABOVE CONCRETE SURFACE. SEE DETAIL 8 ON SHEET A3.0.
8. BOLLARDS WILL BE FILLED WITH CONCRETE.
9. ATM SLAB WILL A MINIMUM 12" THICK TO ALLOW DRILLED ANCHOR POINTS.
10. LIGHT ACTIVATION FOR LIGHT STANDARDS AND CANOPY WILL BE PERFORMED BY SINGLE PHOTOCCELL PLACED ON METER & PANEL STRUCTURE.
11. INGRESS & EGRESS LIGHT POLES WILL RECEIVE ONE 1" DEDICATED DRY CONDUIT TERMINATING AT THE ATM PIT.
12. CANOPY INGRESS LEG WILL RECEIVE ONE 1" DEDICATED DRY CONDUIT TERMINATING AT THE ATM PIT.
13. ATM PIT WILL RECEIVE TWO 1" DEDICATED DRY CONDUIT TERMINATING AT METER, ONE FOR POWER & ONE FOR SPARE.
14. ATM PIT RECEIVES 2 CIRCUITS (30 AMP FOR ATM & 20 AMP FOR ANCILLARY DEVICES).

COPYRIGHT © 2022 BY FLITE BANKING CENTERS, LLC. ALL RIGHTS RESERVED. TO INCLUDE, BUT NOT LIMITED TO, ALL DESIGN ELEMENTS SUCH AS SITE PLAN, GRADING, DEMOLITION, UTILITIES, AND CONCEPTUAL LAYOUTS. THESE PLANS MAY NOT BE USED FOR ANY OTHER PROJECT WITHOUT THE WRITTEN AUTHORIZATION OF FLITE BANKING CENTERS, LLC. ADDITIONALLY, ANY VIOLATION OF THE TERMS AND CONDITIONS OF THESE PLANS WILL BE REPORTED TO THE BOARD OF PROFESSIONAL ENGINEERS.

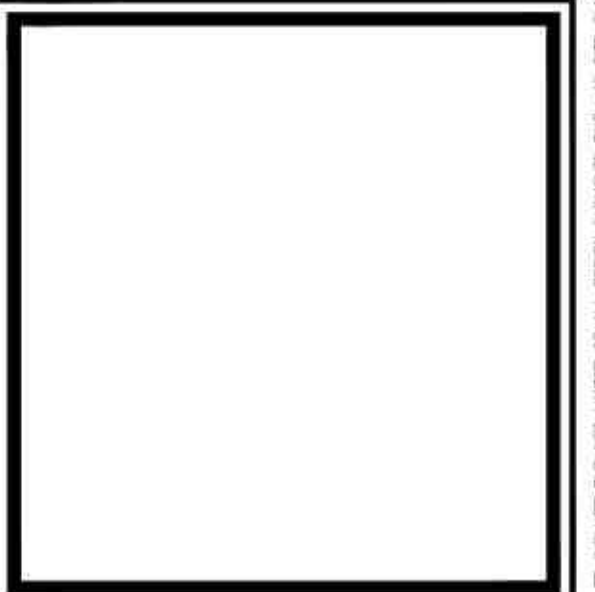


FLITE BANKING CENTERS, LLC.
 8955 KATY FREEWAY
 SUITE 107
 HOUSTON, TX 77024
 PH: (281) 886-3734

REVISIONS		
NO.	DATE	DESCRIPTION

FLITE BANKING CENTERS, LLC.
 1613 NORTH MAIN STREET
 SAN LUIS, AZ 85349

SITE LOCATION



PROJECT NO:
 DATE: 9/10/2022
 DRAWN BY: DLD
 CHECKED BY: ---

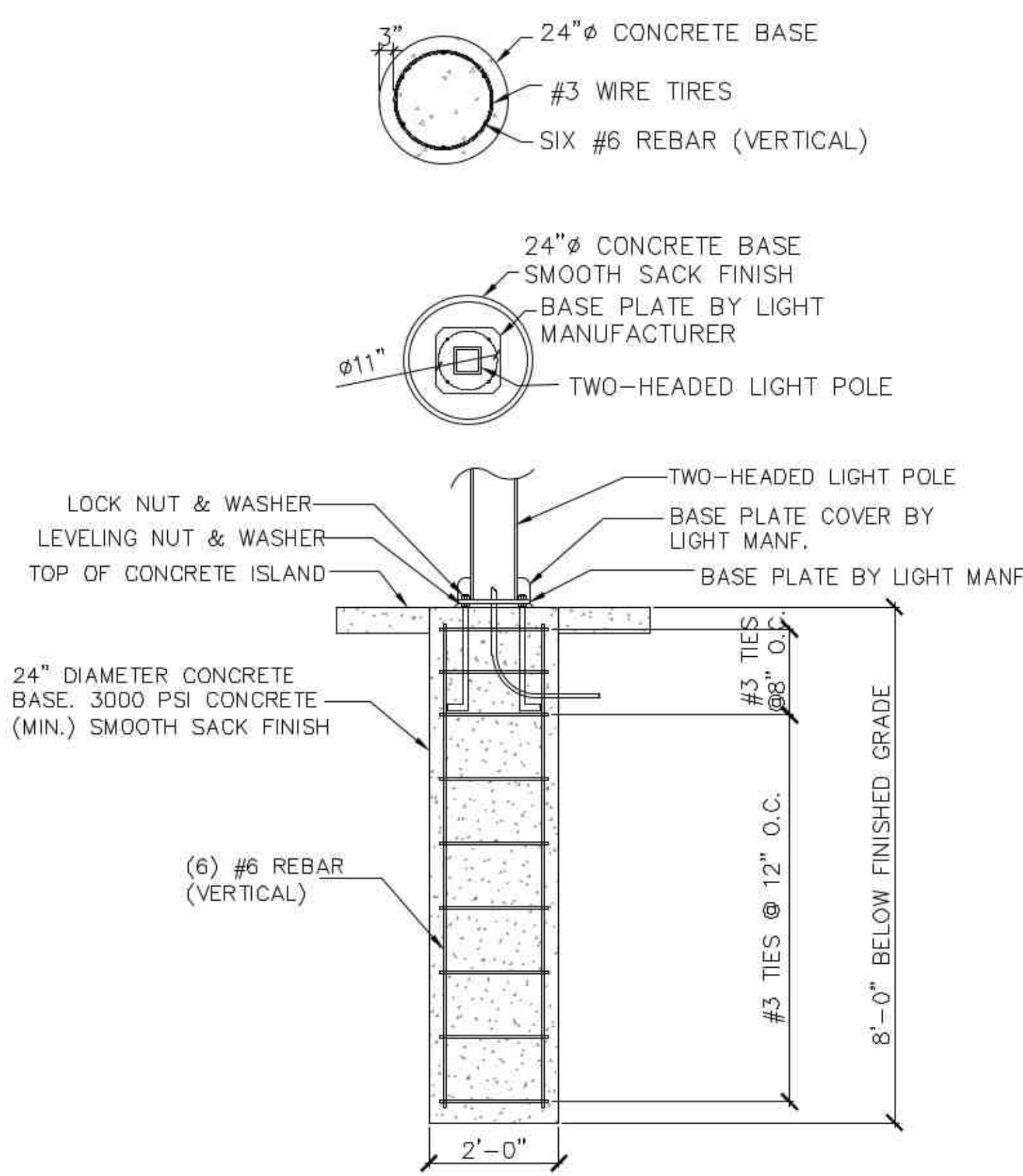
SHEET
A1.0

1 SITE LOCATION
 A1.0 SCALE: NTS

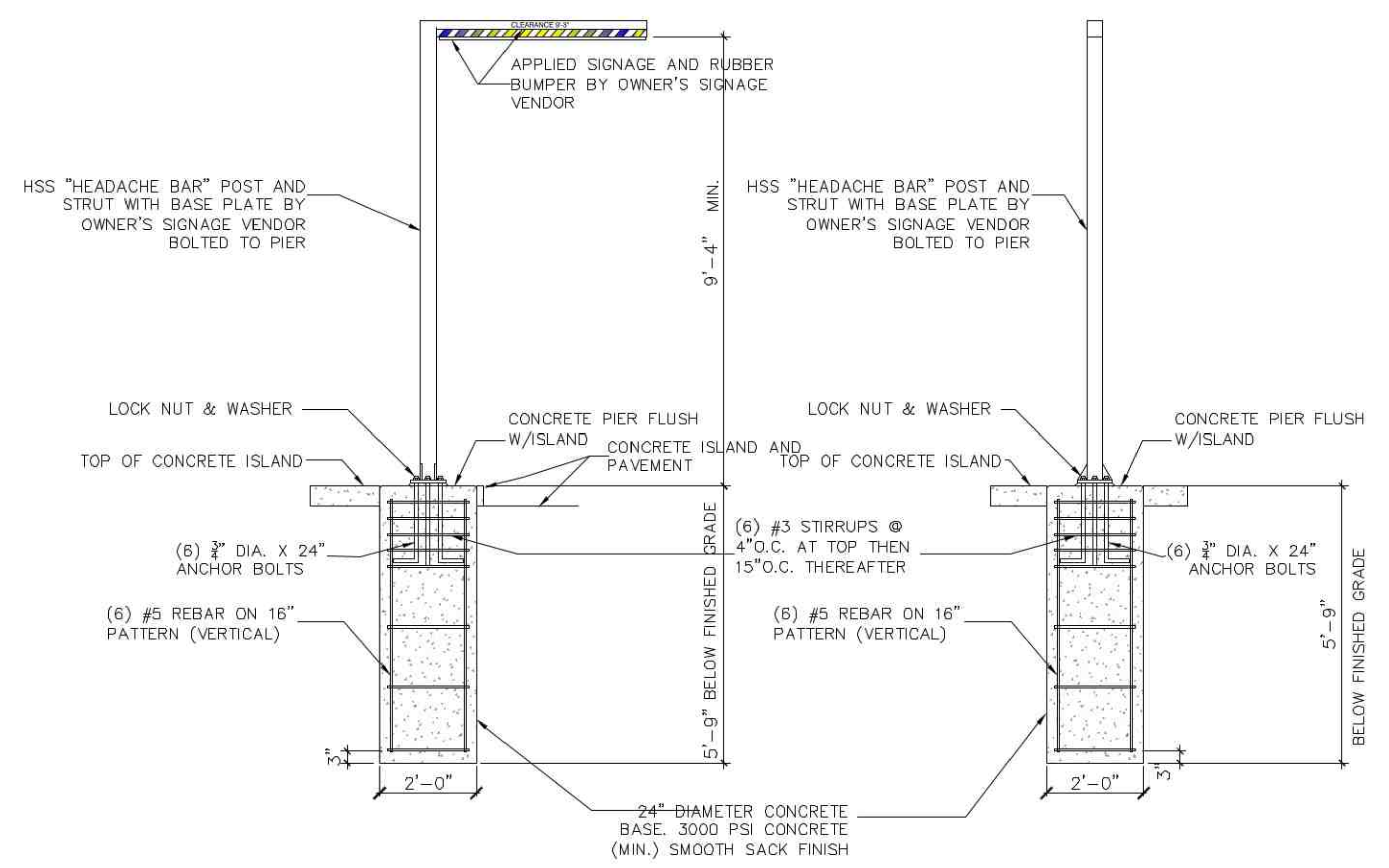


NORTH

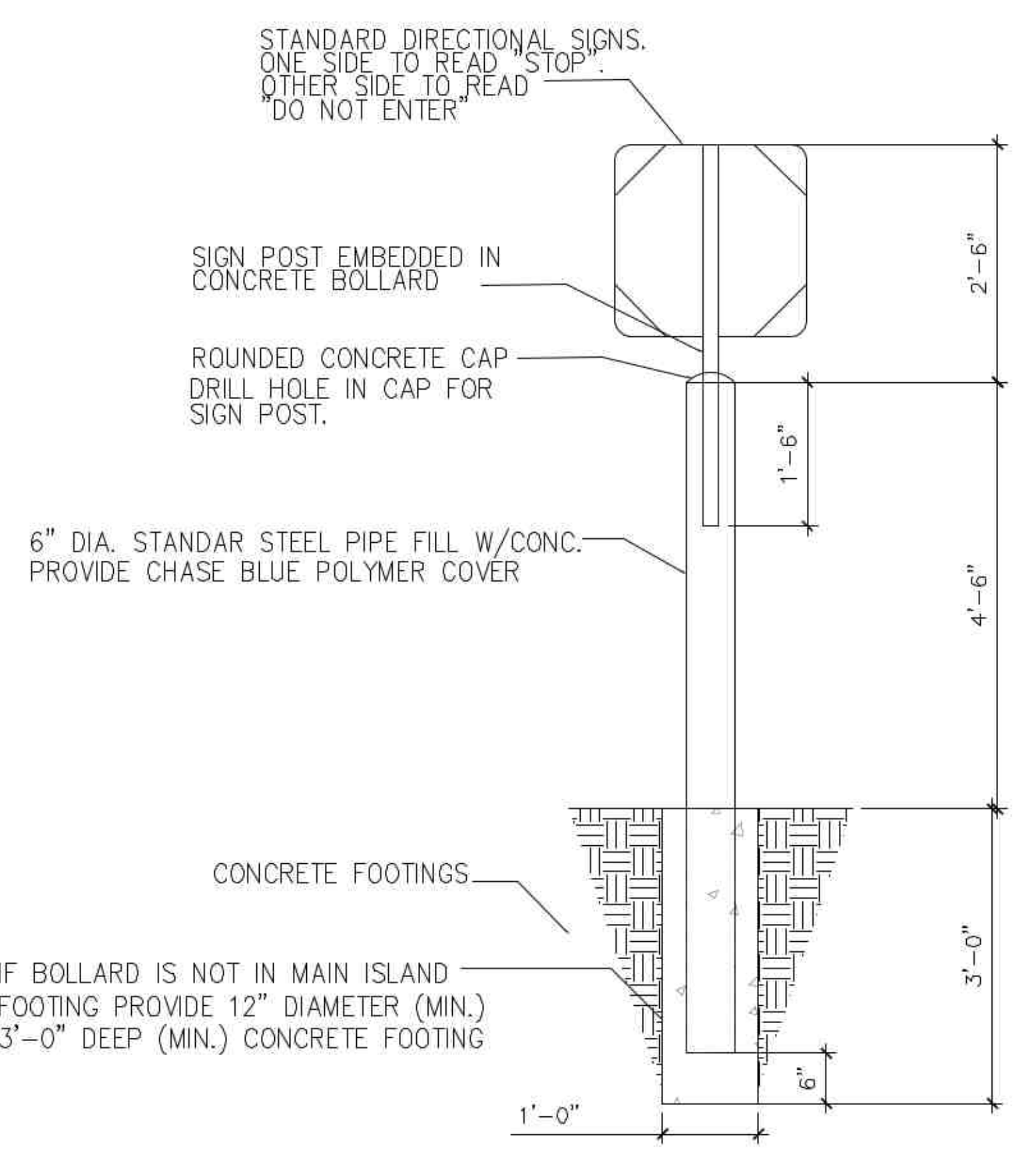
Copyright © 2022, Flite Banking Centers, LLC. All rights reserved. This drawing is the property of Flite Banking Centers, LLC. It is to be used only for the project and location specified. No part of this drawing may be reproduced, stored in a retrieval system, or transmitted in any form or by any means, electronic, mechanical, photocopying, recording, or by any information storage and retrieval system, without the prior written permission of Flite Banking Centers, LLC.



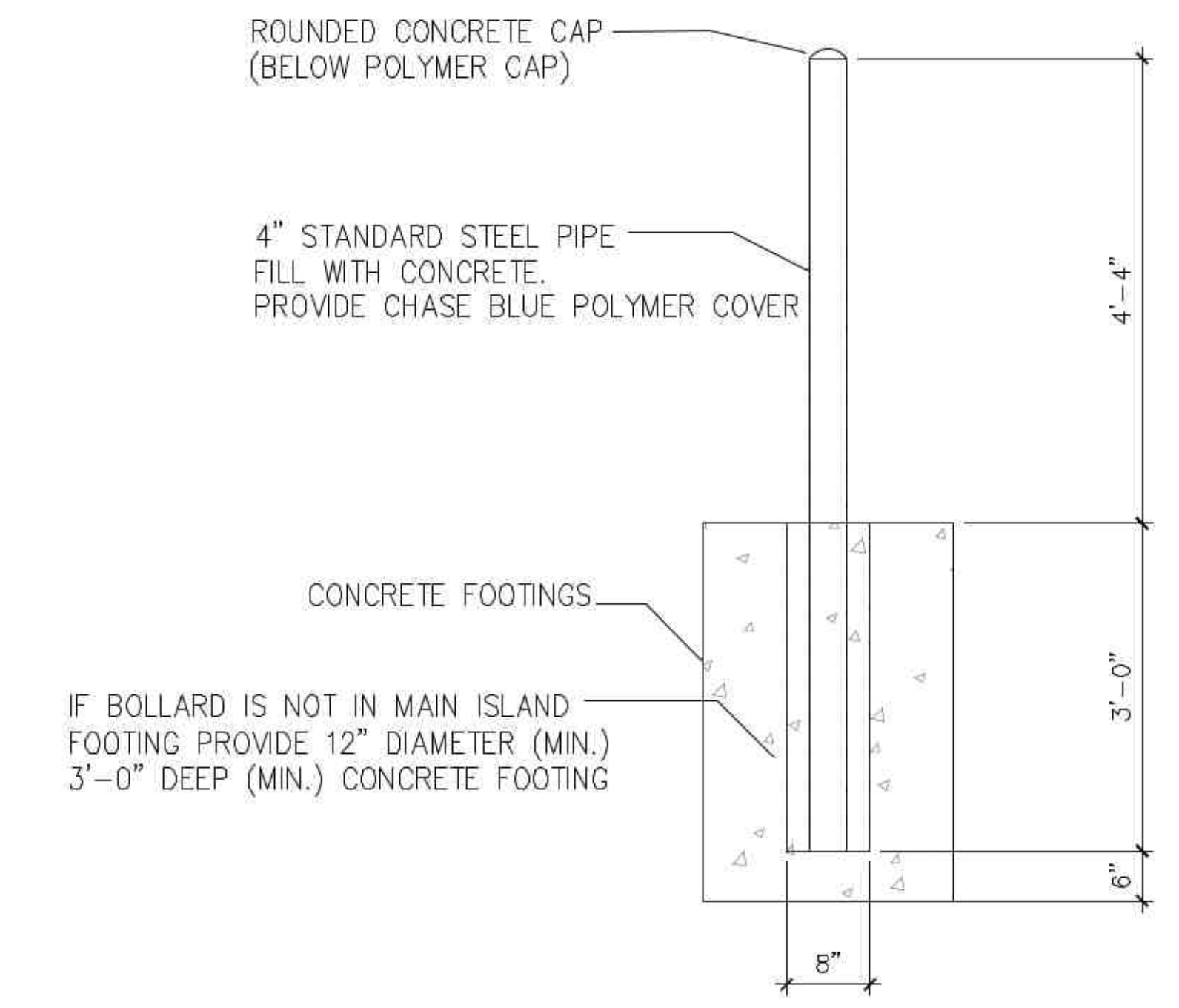
1 LIGHT POLE DETAIL
SS1.0 SCALE: N.T.S.



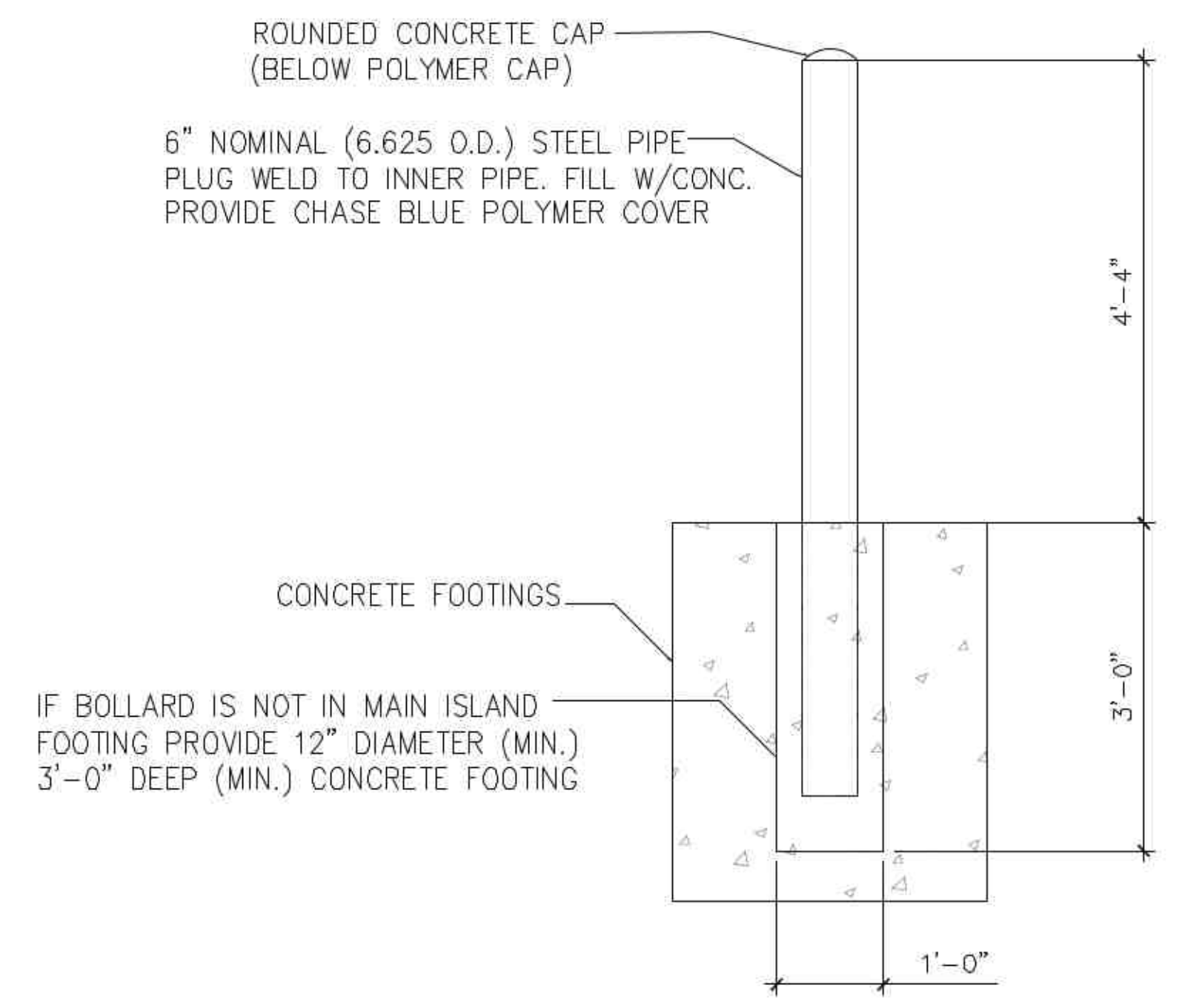
2 CLEARANCE BAR PIER
SS1.0 SCALE: N.T.S.



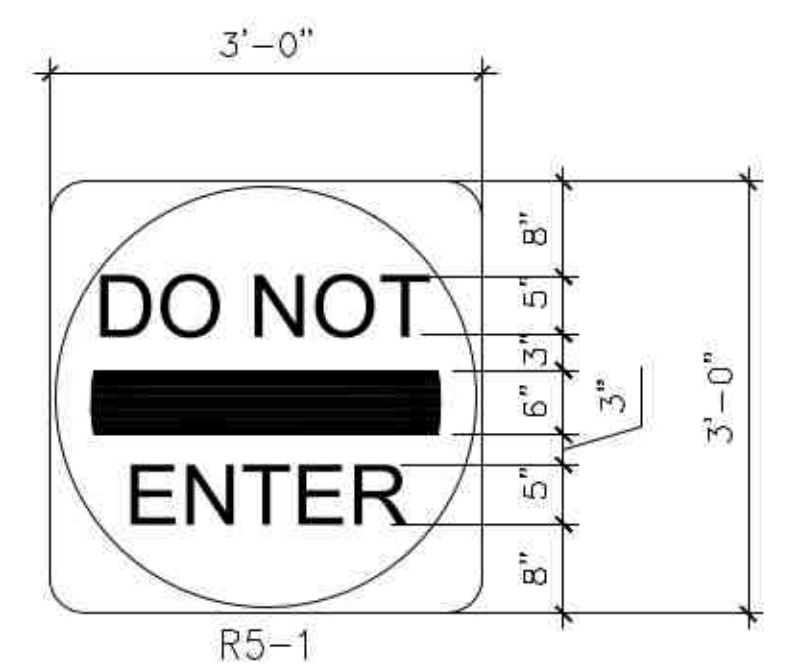
3 DIRECTIONAL SIGNAGE
SS1.0 SCALE: N.T.S.



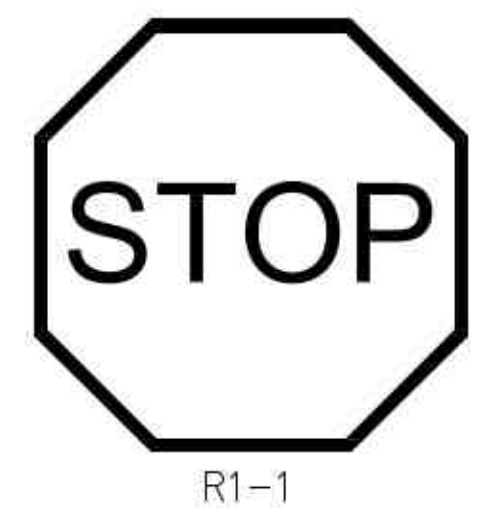
4 4" BOLLARD DETAIL
SS1.0 SCALE: N.T.S.



5 6" BOLLARD DETAIL
SS1.0 SCALE: N.T.S.



- NOTES**
- ALL DIMENSIONS SHOWN IN INCHES.
 - REGULATORY SIGNS SHALL HAVE WHITE BACKGROUNDS WITH BLACK LEGENDS AND BORDERS. THE "DO NOT ENTER" SIGN SHALL HAVE A WHITE BACKGROUND AND WHITE LEGEND INSIDE A RED CIRCLE.
 - THE "DO NOT ENTER" SIGN (R5-1) SHALL BE USED WHERE TRAFFIC IS PROHIBITED FROM ENTERING A RESTRICTED ROADWAY. IF USED, R5-1 SIGN SHALL BE PLACED DIRECTLY IN VIEW OF A ROAD USER AT THE POINT WHERE A ROAD USER COULD WRONGLY ENTER A DIVIDED HIGHWAY OR A ONE-WAY ROAD.
 - A SECOND "DO NOT ENTER" SIGN MAY BE INSTALLED ON THE LEFT HAND SIDE OF THE ROADWAY, PARTICULARLY WHERE TRAFFIC APPROACHES FROM AN INTERSECTING ROADWAY.



- NOTES**
- ALL DIMENSIONS SHOWN IN INCHES.
 - *STOP SIGNS* (R1-1) SHALL BE AN OCTAGON WITH A WHITE LEGEND AND BORDER ON A RED BACKGROUND.
 - WHEN IT IS DETERMINED THAT A FULL STOP IS REQUIRED ON AN APPROACH TO AN INTERSECTION, A *STOP* SIGN (R1-1) SHALL BE USED.
 - WHERE SIDE ROADS INTERSECT A MULTI-LANE STREET OR HIGHWAY THAT HAS A SPEED LIMIT OF 45 MPH OR HIGHER, THE MINIMUM SIZE OF THE STOP SIGNS FACING THE SIDE ROAD APPROACHES, EVEN IF THE SIDE ROAD IS A ONE LANE APPROACH, SHALL BE A 36X36 INCHES.
 - WHERE SIDE ROADS INTERSECT A MULTI-LANE STREET OR HIGHWAY THAT HAS A SPEED LIMIT OF 40 MPH OR LOWER, THE MINIMUM SIZE OF THE STOP SIGN FACING THE SIDE ROAD APPROACHES SHALL BE AS SHOWN IN THE TABLE GIVEN, BASED ON THE NUMBER OF APPROACH LANES ON THE SIDE STREET APPROACH.
 - SECONDARY LEGENDS SHALL NOT BE USED ON *STOP* SIGN FACES.
 - AT INTERSECTIONS WHERE ALL APPROACHES ARE CONTROLLED BY *STOP* SIGNS, AN *ALL WAY* SUPPLEMENT PLAQUE SHALL MOUNTED BELOW EACH *STOP* SIGN. THE *ALL WAY* PLAQUE SHALL HAVE A WHITE LEGEND AND BORDER ON A RED BACKGROUND.

STOP SIGN STANDARDS			
STREET TYPE	SPEED LIMIT	LETTER HEIGHT	SIGN SIZE
SINGLE LANE	40 MPH OR LESS	10 IN.	30 IN.
MULTI-LANE	45 MPH OR LESS	12 IN.	36 IN.

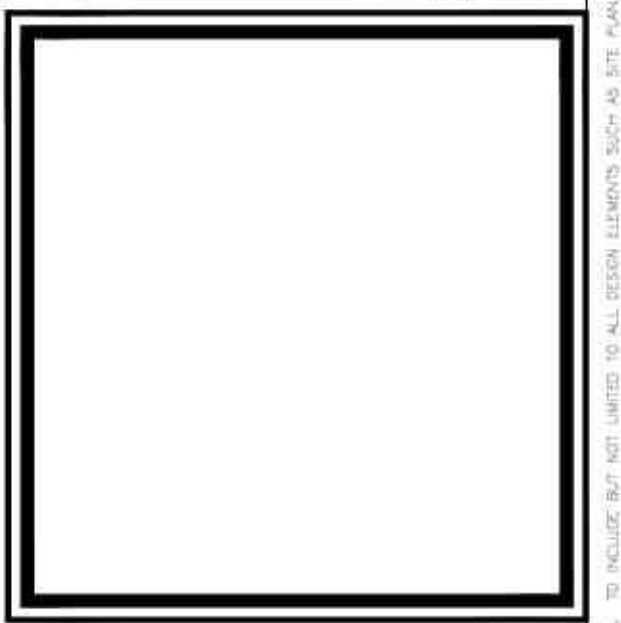
6 SIGNAGE DETAIL
SS1.0 SCALE: N.T.S.



FLITE BANKING CENTERS, LLC.
8955 KATY FREEWAY
SUITE 107
HOUSTON, TX 77024
PH: (281) 886-3734

REVISIONS		
NO.	DATE	DESCRIPTION

FLITE BANKING CENTERS, LLC.
1613 NORTH MAIN STREET
SAN LUIS, AZ 85349
ATM/BOLLARD LAYOUT



PROJECT NO:
DATE: 9/10/2022
DRAWN BY: DLD
CHECKED BY: ---

SHEET
SS1.0