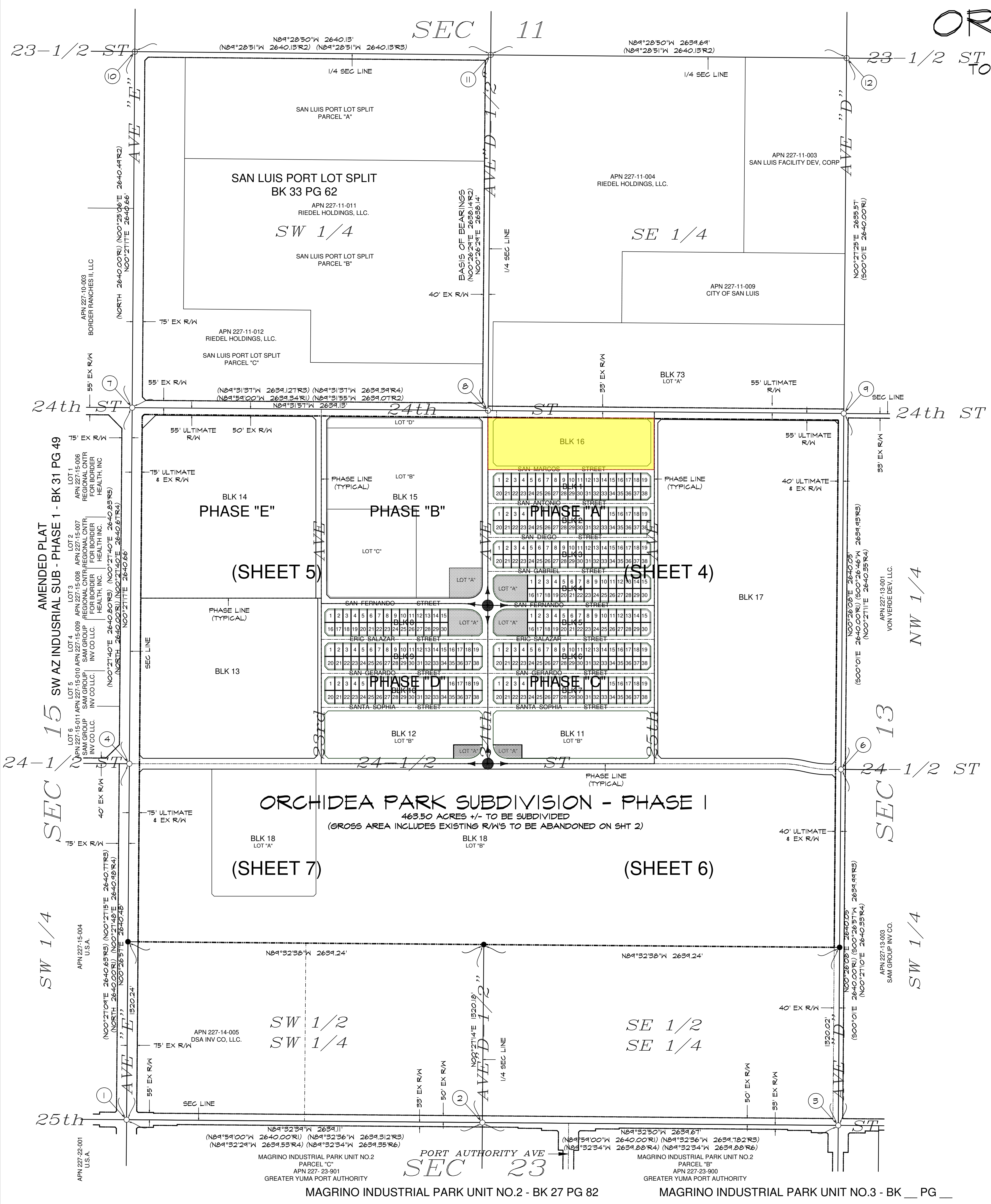


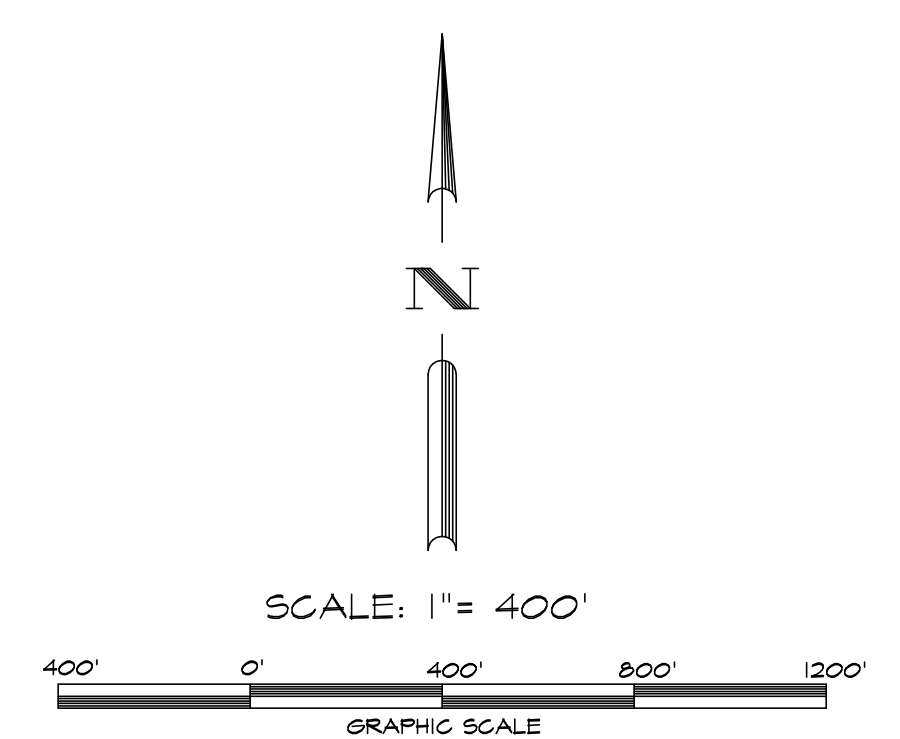
ORCHIDEA PARK SUBDIVISION - PHASE I

PRELIMINARY PLAT

A RE-SUBDIVISION OF PORTIONS OF SECTION 14
TOWNSHIP II SOUTH, RANGE 24 WEST, G.&S.R.B.&M., CITY OF SAN LUIS, YUMA COUNTY, ARIZONA.



- LEGEND**
- (R1) USGLO PLAT OF TOWNSHIP II SOUTH, RANGE 24 WEST, G.S.R.B. & M., FILED MARCH 12, 1922, IN THE US SURVEYOR GENERAL'S OFFICE.
 - (R2) RECORD DATA PER SAN LUIS PORT LOT SPLIT, BOOK 33 OF PLATS PAGE 62, Y.C.R.
 - (R3) RECORD DATA PER EAST CITY OF SAN LUIS - SAN LUIS PORT II - INDUSTRIAL PARK, LLC, BK 26 OF PLATS PAGE 4, Y.C.R.
 - (R4) RECORD DATA PER YUMA AREA SERVICE HIGHWAY RESULTS OF SURVEY, BOOK 3 OF SURVEYS PAGE 44, Y.C.R.
 - (R5) RECORD DATA PER AMENDED PLAT OF SOUTHWEST ARIZONA INDUSTRIAL SUBDIVISION - (PHASE I), BK 31 OF PLATS PAGE 49, Y.C.R.
 - (R6) RECORD DATA PER LOT SPLIT/LOT TIE FOR MAGRINO INDUSTRIAL PARK UNIT NO.2, BOOK 21 OF PLATS PAGE 82, Y.C.R.
 - (R7) RECORD DATA PER FEE# 2001-20580, Y.C.R.
 - FOUND MONUMENT AS NOTED ON SHEET 2
 - STANDARD YUMA COUNTY SUBDIVISION MONUMENT (4-080)
 - STANDARD YUMA COUNTY STREET MONUMENT (4-080)
 - Y.C.R. YUMA COUNTY RECORDS
 - SUBDIVISION BOUNDARY
 - RIGHT OF WAY LINE
 - BLOCK LINE
 - LOT LINE
 - ⑨ SURVEYOR'S MONUMENTATION NOTE AS DEFINED ON SHEET 2



Gordon O. Olson 3.02.2023
GORDON O. OLSON, L.S. 27748
LICENSE EXPIRATION DATE: 3-31-2024

PRELIMINARY PLAT		SHEET
ORCHIDEA PARK SUBDIVISION		3
PHASE I		7
DATE: SAN LUIS, AZ	FILE NAME: 22001GPPP Revised - Unit 1 - Sht 3 (03-22-23).dwg	DATE: 03-25-2023
DRAWN: SAM GROUP INV. CO.	BY: G.O.	DATE: 03-25-2023

23-1/2 ST
24th ST
24-1/2 ST
25th ST

SW 1/4
SW 1/4
SW 1/2
SW 1/4

AVE "E"
AVE "D"
AVE "C"

SEC 11
SEC 13
SEC 23

BLK 14 PHASE "E" (SHEET 5)
BLK 15 PHASE "B" (SHEET 4)
BLK 16 PHASE "A" (SHEET 4)
BLK 17 PHASE "C" (SHEET 4)
BLK 18 PHASE "D" (SHEET 4)
BLK 11 PHASE "C" (SHEET 6)
BLK 12 PHASE "D" (SHEET 6)
BLK 13 PHASE "E" (SHEET 7)
BLK 14 PHASE "B" (SHEET 7)
BLK 15 PHASE "A" (SHEET 7)
BLK 16 PHASE "C" (SHEET 7)
BLK 17 PHASE "D" (SHEET 7)
BLK 18 PHASE "E" (SHEET 7)

MAGRINO INDUSTRIAL PARK UNIT NO.2 - BK 27 PG 82
MAGRINO INDUSTRIAL PARK UNIT NO.3 - BK ___ PG ___