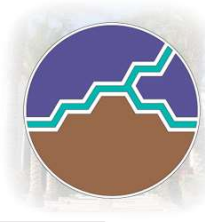




# GREATER YUMA PORT AUTHORITY

Submitted to the City of San Luis, AZ



**MISSION STATEMENT:**

**THE GREATER YUMA PORT AUTHORITY WILL DEVELOP A GATEWAY FOR GLOBAL TRADE AND FACILITATE, PROMOTE AND SUPPORT MULTI-MODAL TRANSPORTATION AND TRADE OPPORTUNITIES TO ENHANCE ECONOMIC DEVELOPMENT IN THE GREATER YUMA AREA.**



# INDUSTRIAL DEVELOPMENT

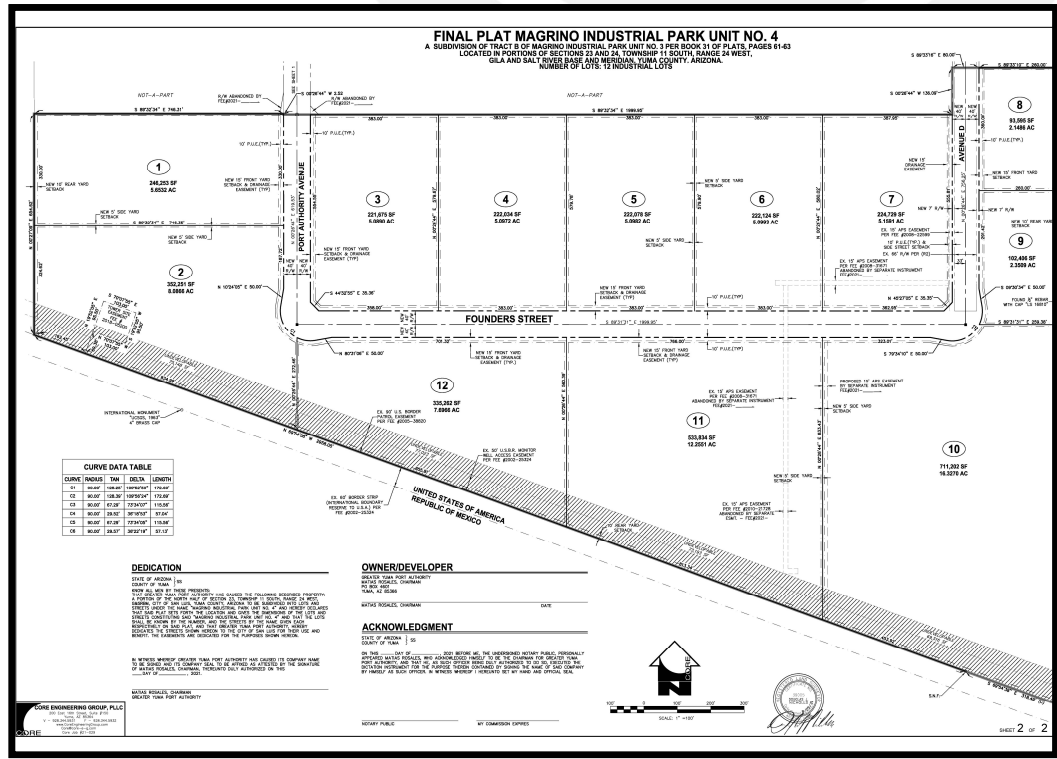
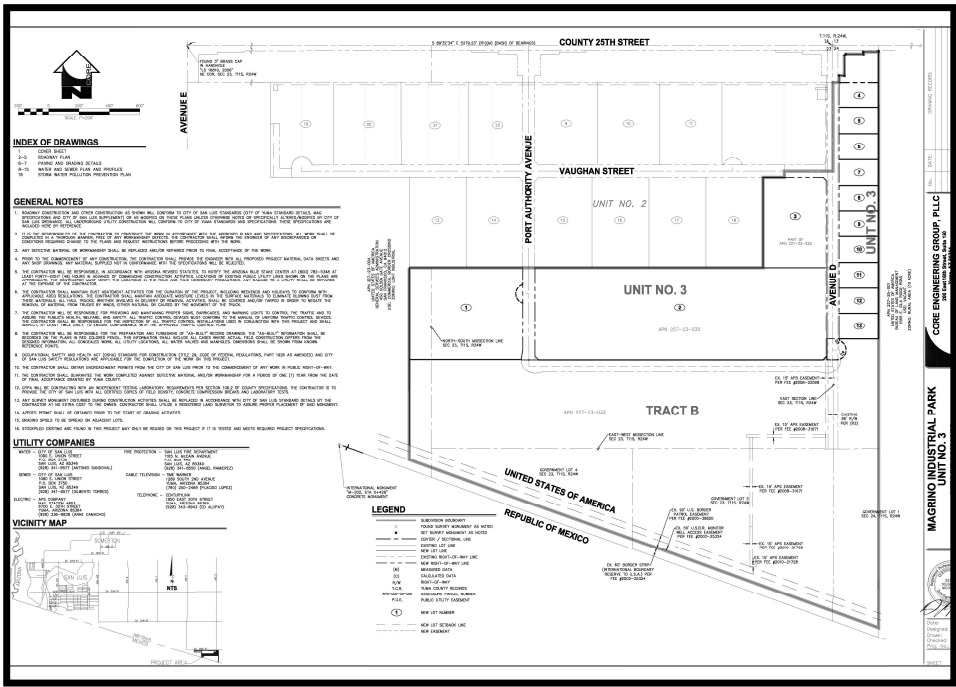
- With the assistance of Yuma County, who allocated \$2.5 Million of their ARPA fund allocation towards the underground infrastructure of the Industrial Development.
- Additionally, Yuma County acted as the grantor, securing a loan for the remaining balance of development improvements.
- The development is slated for completion June 2023.



# INDUSTRIAL DEVELOPMENT

The Greater Yuma Port Authority has continued to develop the surrounding raw industrial land of the San Luis Commercial port of entry.

Located within the Gary J. Magrino Industrial park, 86 acres are currently being developed.



---

## SUCCESSFUL PARTNERSHIPS

In 2022, Chicano's Por la Causa (CPLC) and GYPA executed a purchase agreement from the remainder of the Gary J. Magrino Industrial development.

CPLC vision is to construct spec buildings and warehouses that will continue to uphold the necessary tools for International trade for the Greater Yuma Region.



# PERFORMANCE METRICS

## LEADERSHIP & ADVOCACY



- Since 2018, GYPA has maintained a full-time director to oversee operations and ensure the financial wellness of the organization.
- GYPA's presence has been more visible in engagement activities such as ADOT meetings, San Luis I Technical meetings and alongside GYEDC for regional recruitment.
- GYPA has aided in communication measures between the newly implemented leadership at the San Luis Sonora Port of Entry and maintained clear communication with the Consul General in Nogales regarding federal changes within the Mexican government.

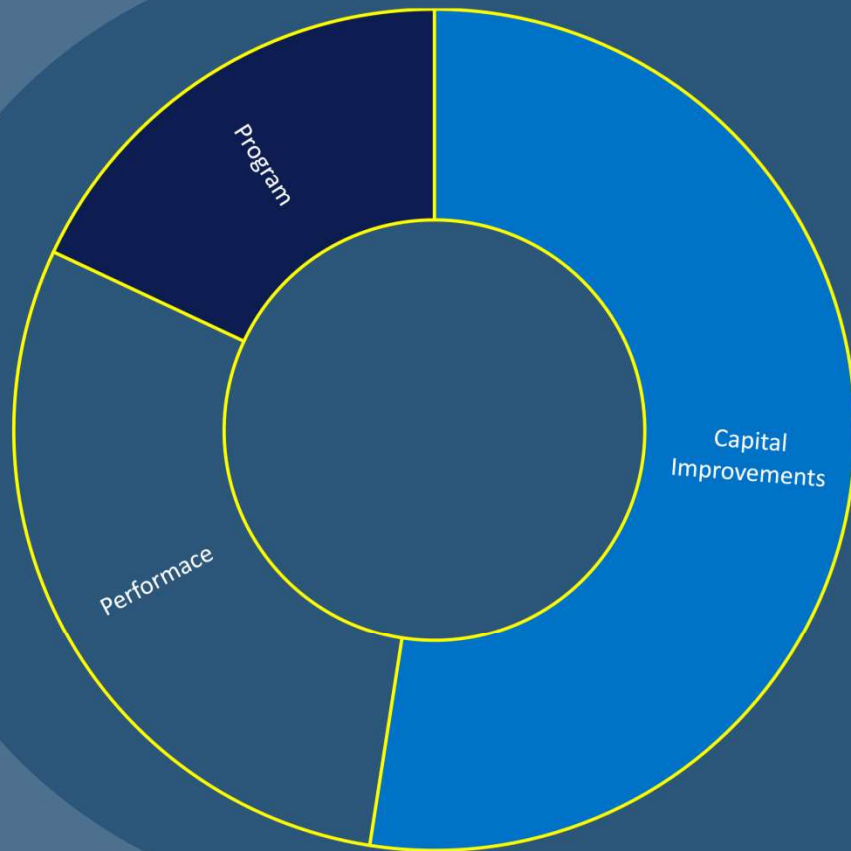


- GYPA has engaged with and carried out port tours, land viability meetings and workforce inquiries with potential commercial port users.
- Users have inquired about operation expansions from Texas, Nogales, Chicago and Tijuana.
- GYPA continues to forecast the need for a future alternative truck route outside of the principal Ave E corridor on the east side of San Luis, AZ.



## STAKEHOLDER ENGAGEMENT

## Expenditures



Expenses for the Gary J. Magrino Industrial Development have included:

- Engineering & Design
- Conceptual Plans
- Bidding
- Daily Operations
- Legal Expenditures
- Contractor Expenses
- Utility Expenses
- Memberships
- Administrative costs

---

## BOARD OF DIRECTORS



**MATIAS ROSALES**

Chairman of the Board

Appointed by the  
City of San Luis



**MARCO A. "TONY" REYES**

Vice Chair

Appointed by  
Yuma County



**WAYNE GALE**

Secretary / Treasurer

Appointed by the  
City of Yuma



**GARY MAGRINO**

Founder

Appointed by the  
Cocopah Tribal Nation

---

## BOARD OF DIRECTORS



**FRANK RASCON**

Board Member  
Appointed by the  
City of San Luis



**IAN MCGAUGHEY**

Board Member  
Appointed by  
Yuma County



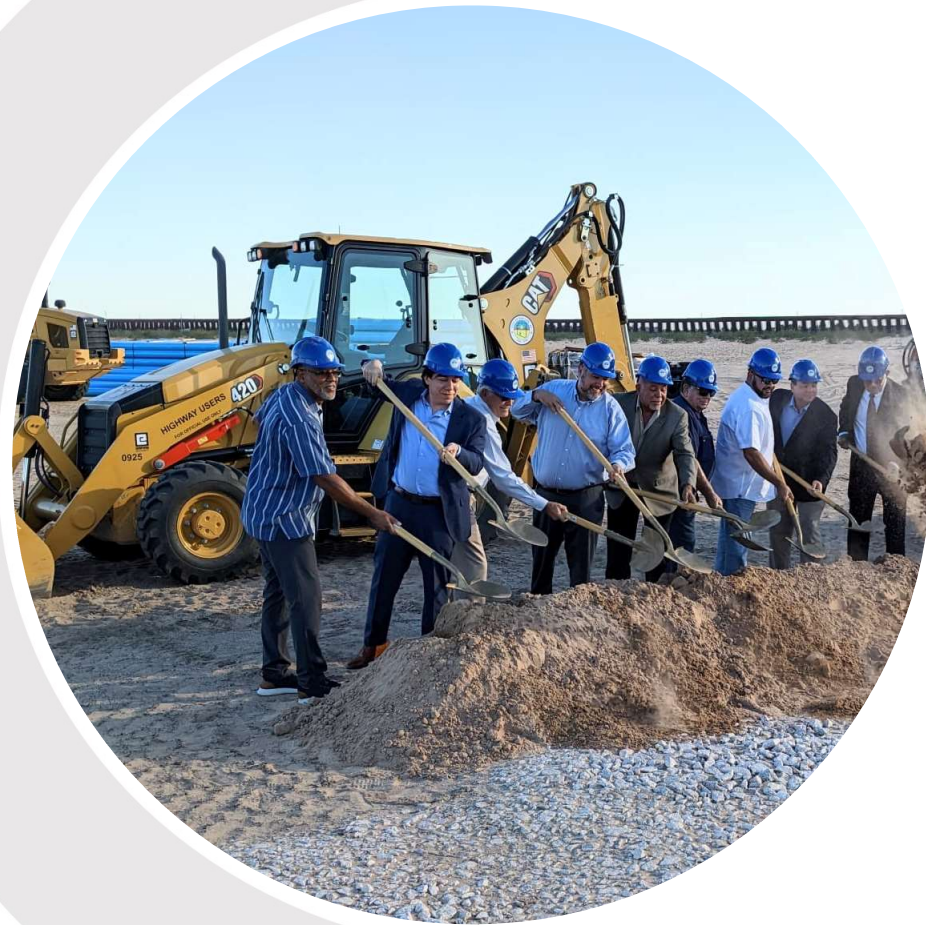
**GARY KNIGHT**

Board Member  
Appointed by the  
City of Yuma



**ERIC HOLLAND**

Board Member  
Appointed by the  
Cocopah Tribal Nation



# THANK YOU!

---

✉ [BGEORGE@GYPA.ORG](mailto:BGEORGE@GYPA.ORG)

🌐 [WWW.GYPA.ORG](http://WWW.GYPA.ORG)