



Planning and Zoning Commission

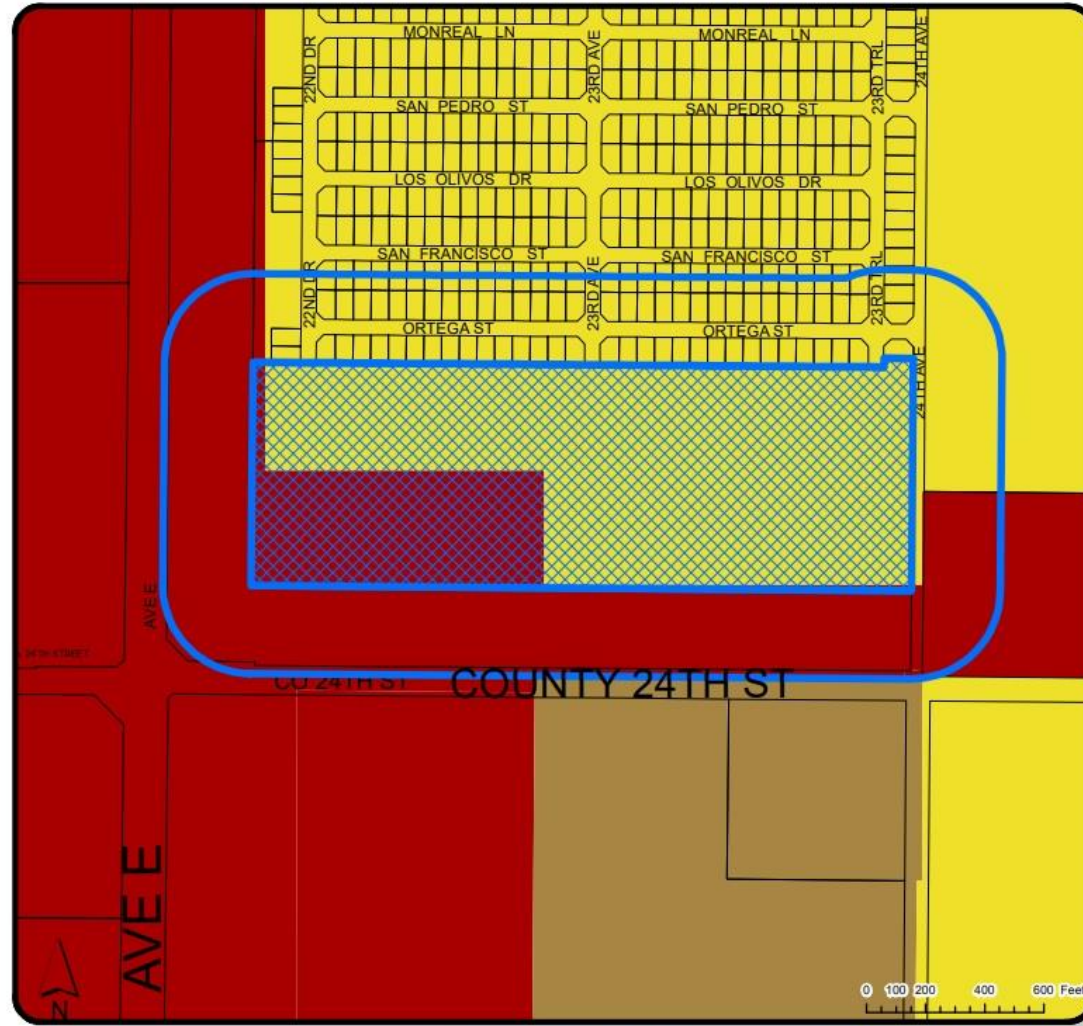
February 14, 2023

Minor Amendment Case No. 2022-0711

Request: To change the land use designation of approximately 8.9 acres from Commercial (C) to Medium Density Residential (MDR). A portion of Assessor's Parcel 227-11-393 located north of County 24th Street between Avenue E and 24th Avenue in San Luis, Arizona.

- ◉ The applicant is requesting the land use change to allow the rezoning to R1-6 for the construction of a residential subdivision.

Minor Amendment Case No. 2022-0711



Land Use Map



LOCATION OF SUBJECT PROPERTY

 Assessor's Parcel Number 227-11-393
Change Land Use Designation on southwest 8.90 AC
From Commercial (C) to Medium Density (MDR).

 300ft Notification Area

LOCATION MAP

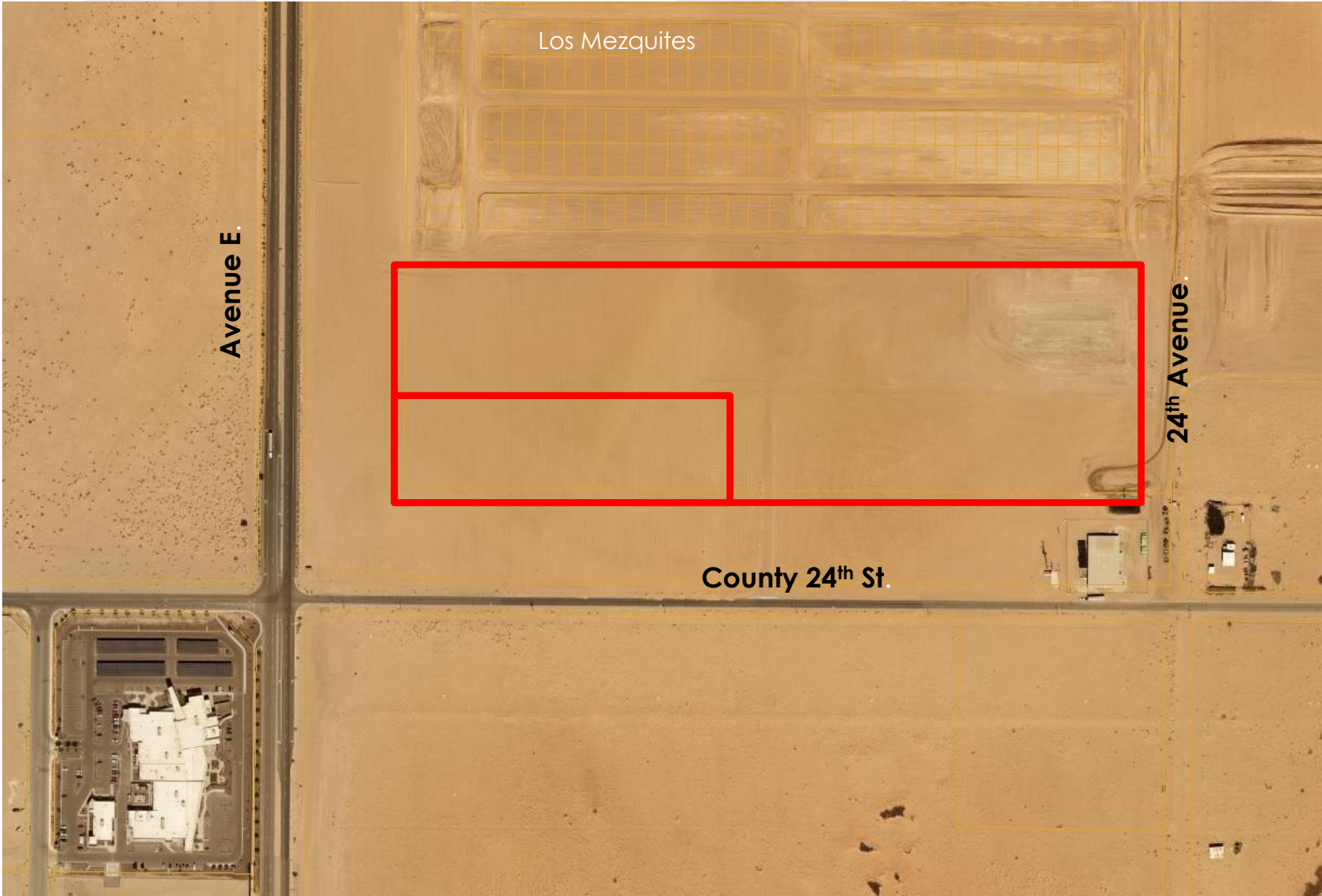
LAND USE

-  Medium Density Residential
-  Commercial
-  High Density Residential

MINOR AMENDMENT

CASE #
2022-0711

Minor Amendment Case No. 2022-0711



Aerial View

Minor Amendment Case No. 2022-0711

Staff Recommendation:

Staff recommends approval of Minor Amendment Case No. 2022-0711.

Recommended Motion:

- ⦿ **I MOVE TO FORWARD MINOR AMENDMENT CASE NO. 2022-0711 TO CITY COUNCIL WITH RECOMMENDATION OF APPROVAL.**