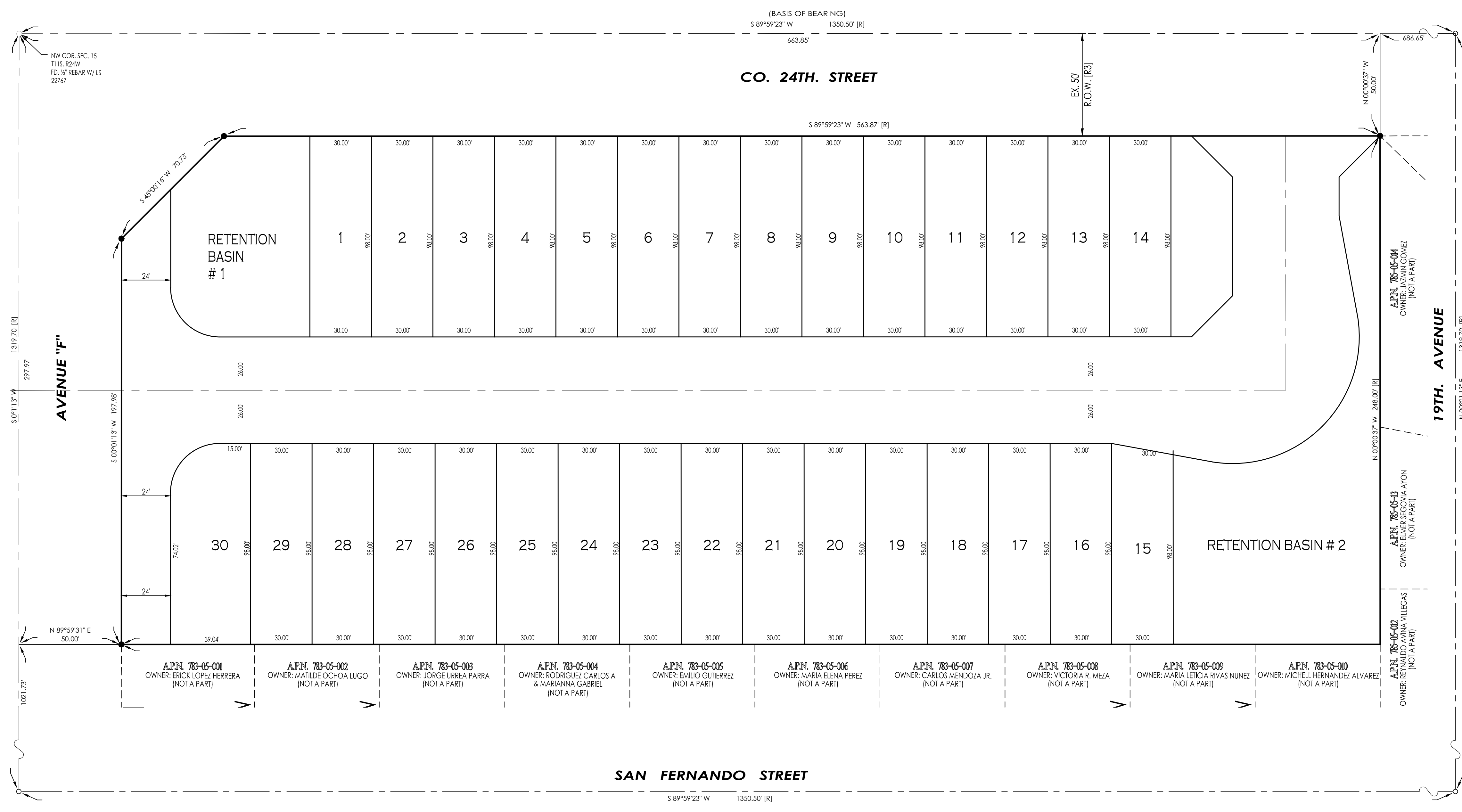
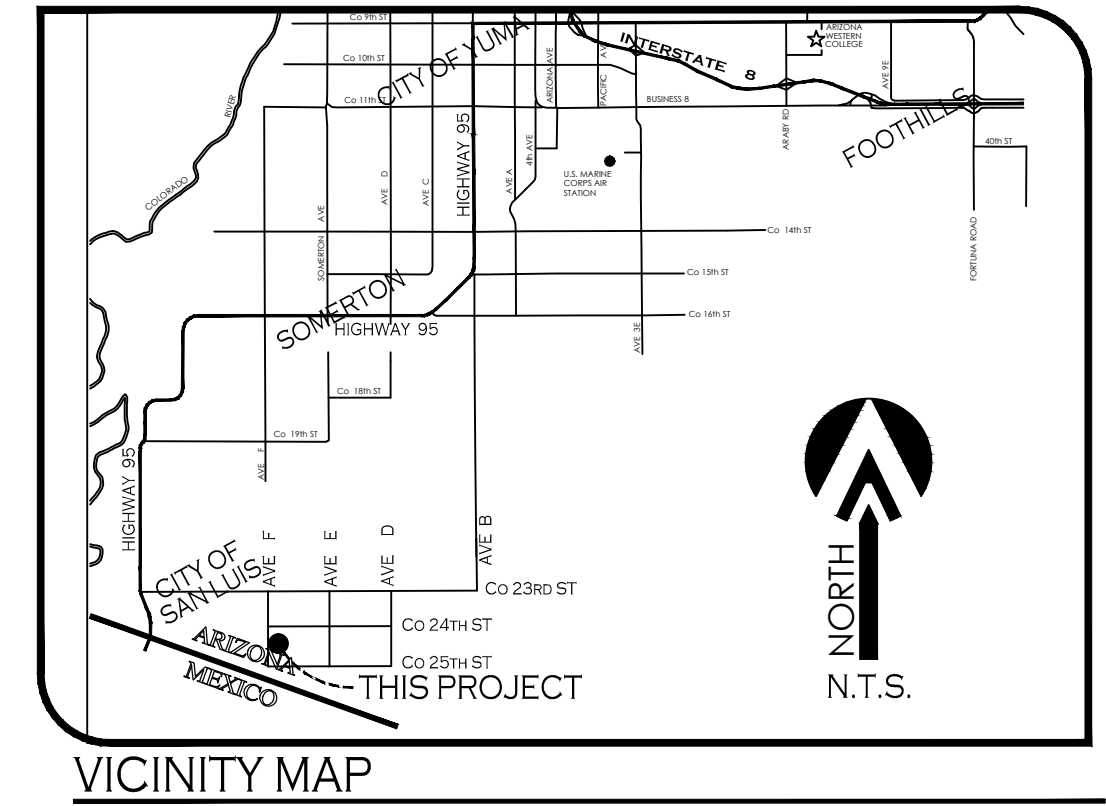
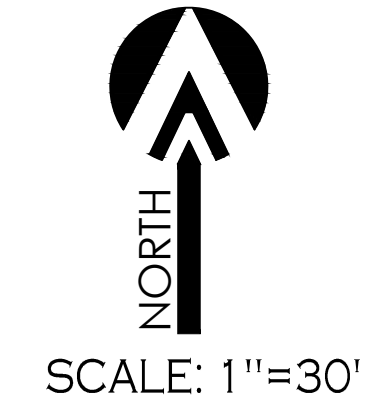


CDBE BEIO TOWNHOUSE CONCEPT LAYOUT



- LEGEND**
- INDICATES BOUNDARY LINE
 - - - INDICATES CENTERLINE
 - - - INDICATES RIGHT-OF-WAY LINE
 - - - INDICATES EASEMENT LINE
 - SET PROPERTY CORNER: TO BE MARKED BY 1/2" DIA. REBAR WITH CAP L.S. 16528 (UNLESS OTHERWISE NOTED)
 - EXISTING MONUMENT (TYPE AS SHOWN)
 - B.C. INDICATES BRASS CAP
 - Y.C.R. INDICATES YUMA COUNTY RECORDERS
 - A.P.N. INDICATES ASSESSOR'S PARCEL NUMBER
 - (M) INDICATES MEASURED DATA
 - (R) DATA REFERS TO BIENESTAR ESTATES 10 SUBDIVISION, AS RECORDED IN BOOK 31 OF PLATS, PAGES 22 & 23, YUMA COUNTY RECORDERS OFFICE, YUMA COUNTY ARIZONA

BASIS OF BEARING
THE NORTH SECTION LINE OF SECTION 15, T11S, R24W, G. & S.R.B. & M., YUMA COUNTY, ARIZONA (BEING THIS LINE THE CENTERLINE OF CO. 24TH STREET), AS SHOWN ON BORDER RANCHES SUBDIVISION, AS RECORDED IN BOOK 27 OF PLATS, PAGES 9 & 10, YUMA COUNTY RECORDERS OFFICE, YUMA COUNTY ARIZONA, BEARING S89°59'23"W

NOTES:
* THIS PROJECT IS LOCATED IN FLOOD ZONE "X" AS DETERMINED BY THE FIRM MAPS
* ZONING: C-2

PREPARED BY:
VnV23-100
VEGA & VEGA ENGINEERS, PLLC
2619 S. Ave. 2-1/2 E Yuma, Az. 85365
928-329-0000 Tel 928-247-6232 Fax
www.veganvega.com

PRELIMINARY