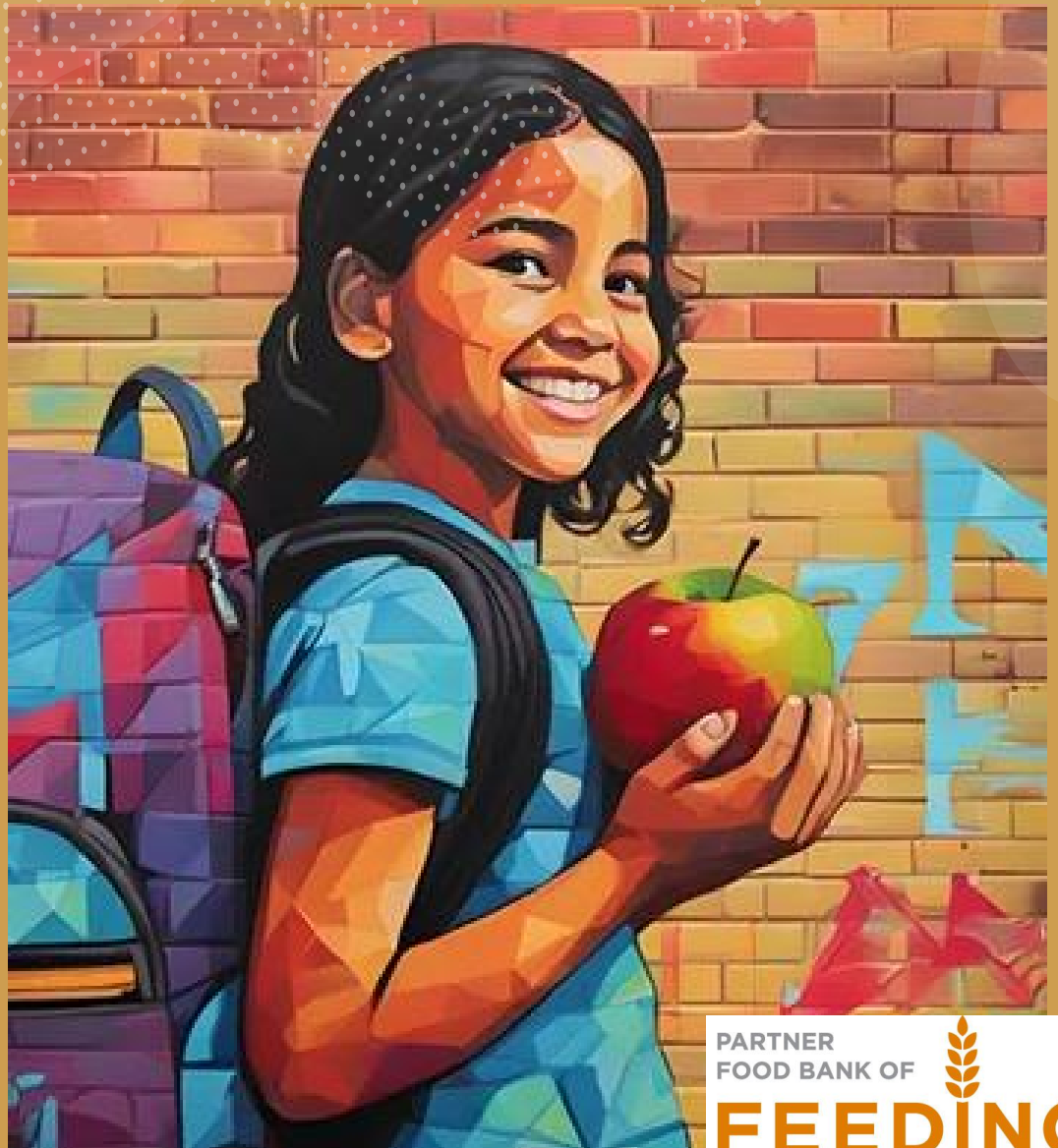


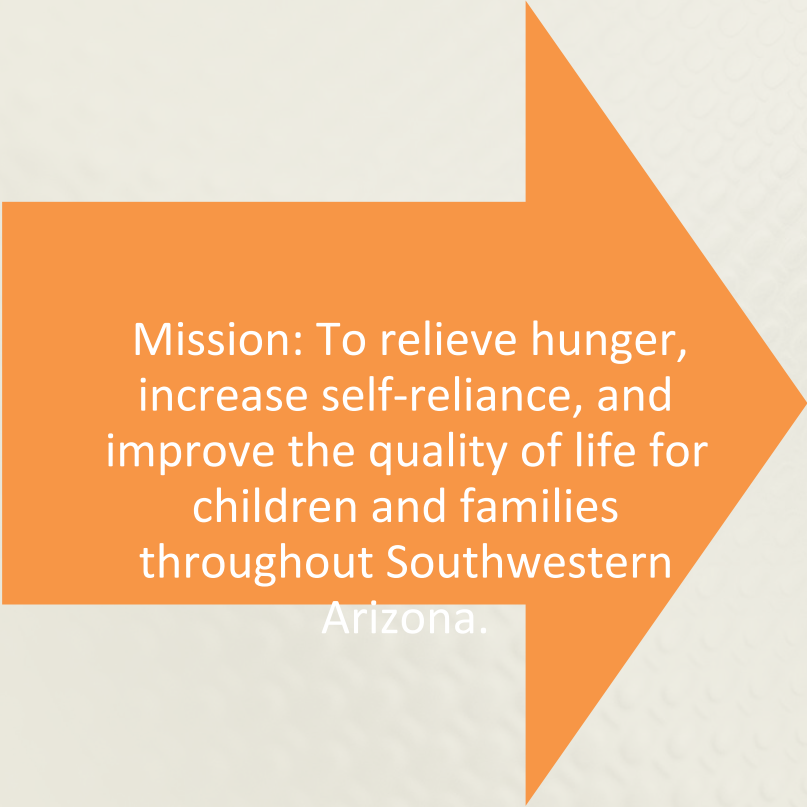
YUMA  
COMMUNITY  
FOOD  
BANK  
Community  
Food Bank

Presentation  
to the City of  
San Luis



PARTNER  
FOOD BANK OF  
**FEEDING**  
**AMERICA**

# Mission & Vision



Mission: To relieve hunger, increase self-reliance, and improve the quality of life for children and families throughout Southwestern Arizona.



Vision: To Build Hunger-Free Communities

# Our History

- Since 1978, Yuma Community Food Bank (YCFB) has led hunger relief in Yuma and La Paz Counties. Formalized in 1981, YCFB has provided food assistance for over 47 years. As the DES -designated Regional Food Bank, we cover nearly 10,000 square miles.



# Program Overview

- Emergency Food Bag Program (13,847 boxes/month)



- Commodity Supplemental Food Program (1,675 seniors)

- Grocery Rescue (daily food recovery from retailers)

- School Food Pantry (families/students)

- Travel Pack Program (unhoused neighbors)

# Regional Reach & Equity

---



We serve Bouse, Somerton, Cibola, Dateland, Ehrenberg, McMullen Valley, Parker, Quartzsite, San Luis and more.



We provide food, support, and best practices to 15 agency partners, ensuring equitable food access.

Distribution

# Programs & Schedule

---

**Location: Cesar Chavez Cultural Center**

---

**When: Second Wednesday of each month**

---

**TEFAP / CSFP**

---

**Time: 7:00 a.m. – 11:00 a.m.**

---

**When: Fourth Wednesday of each month**

---

**TEFAP Only**

---

**Time: 7:00 a.m. – 9:00 a.m.**

# San Luis Distribution FY 24-25

Households Served  
5,123

TEFAP Served  
5,061

0-5 yrs 6%  
6-18 yrs 19% 19  
-24 yrs 8%

Individuals Served  
11,885

CSFP Served  
1,453

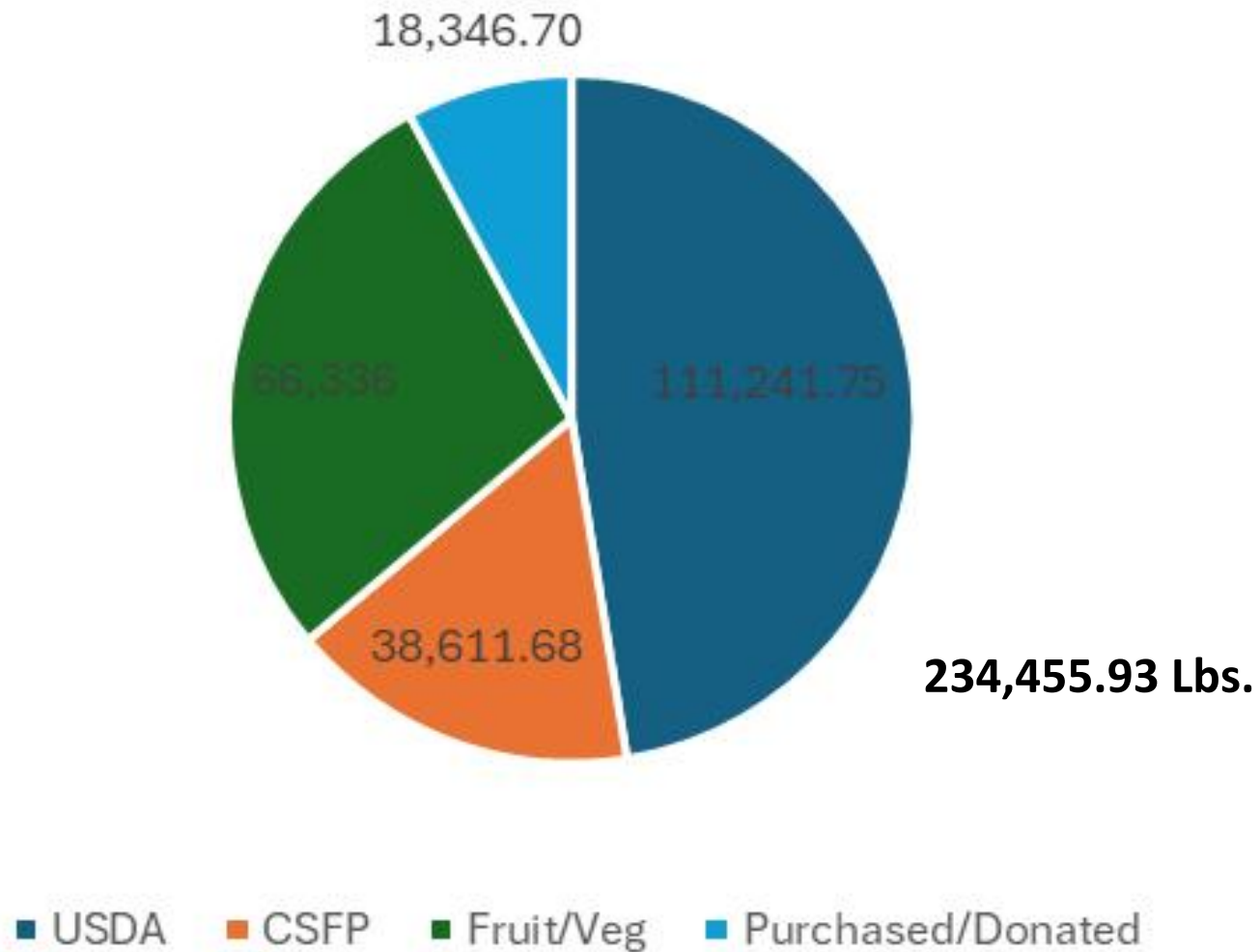
25-35 yrs 12% 36  
-50 yrs 13%  
51-59 yrs 8%  
60+ yrs 35%

# San Luis neighbors Served at Yuma Community Food Bank

Neighbors from San Luis-  
26,427 households

21% of total households  
served  
(125,544) in Yuma County

# Pounds of Food Distributed at Mobile Distribution



# Community Need & Geographic Challenge

---

Yuma Community Food Bank is a vital safety net for Yuma & La Paz Counties, spanning 10,000+ sq. miles.

---

- Drivers travel over 5,000 miles/month to reach remote food deserts (e.g., Dateland, Quartzsite)

---

- Yuma County's unemployment rate (April 2025): 11.3%

---

- 18.8% of residents face food insecurity

---

- 35% of children are food insecure

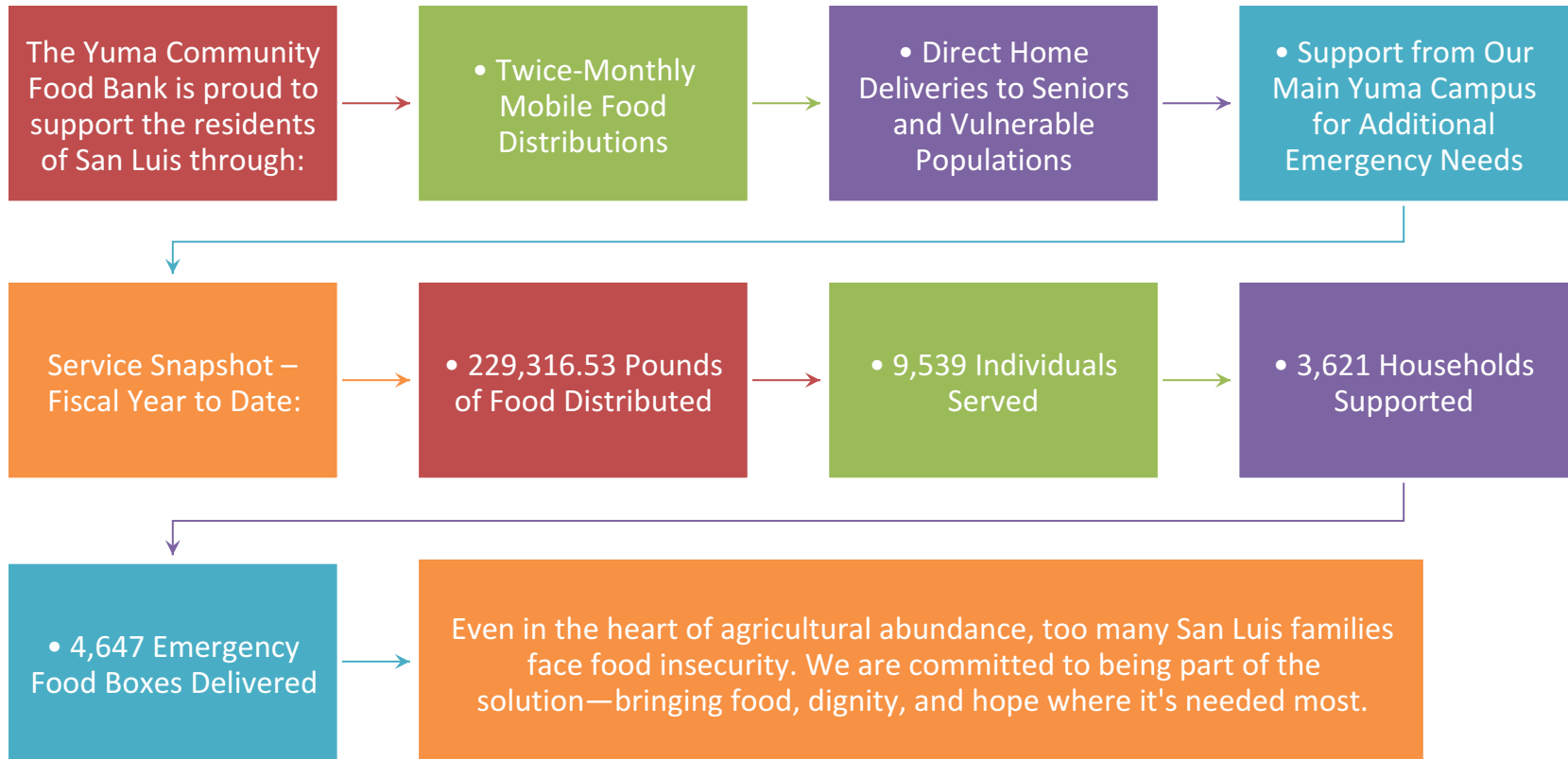
---

Despite being the winter vegetable capital, our region faces limited access to fresh, affordable food.

---

Sustained food assistance remains critical.

# Serving the City of San Luis: Our Impact



# Continued Partnership & Support

- As San Luis expands, the need for services—especially for those below the Federal Poverty Guidelines—also grows.
- Your funding ensured uninterrupted mobile distributions, emergency food boxes, and USDA programs for residents.

## **Looking Ahead: Strengthening Service in San Luis**

We are actively seeking a dedicated facility in San Luis to better serve local families and seniors without requiring travel to Yuma. In the interim, we remain committed to twice-monthly mobile pantry distributions and targeted home deliveries to ensure no resident goes without support.

Secure and equip a permanent San Luis service location Expand food distribution capacity to meet rising demand in a rapidly growing community Enhance outreach and home delivery for isolated seniors and residents with transportation barriers Together, we can deepen our impact in San Luis—bringing food, dignity, and hope to every corner of the city.

