



GYPA

**Greater
Yuma
Port
Authority**

Presented to:
City of San Luis Economic Development Commission
January 29, 2025.

MISSION STATEMENT

The Greater Yuma Port Authority will develop a gateway for global trade and facilitate, promote and support multi-modal transportation and trade opportunities to enhance economic development in the Greater Yuma area.



BOARD MEMBERS

Chairman of the Board
Matias Rosales
Representative of the City of San Luis



Vice Chairman
Supervisor Tony Reyes
Representative of Yuma County



Secretary / Treasurer
Russ Jones
RL Jones Companies
Representative of the City of Yuma



Mayor Nieves Riedel
Representative of the City of San Luis



BOARD MEMBERS

Alejandro Figueroa
Intergovernmental affairs
and economic development director
Representative of Yuma County



Honorable Chris Morris
Councilman for the City of Yuma
Representative of the City of Yuma



Gary Magrino
Business Development Director
Representing the Cocopah Tribe



Arturo Durazo
Tribal Planner
Representative of the Cocopah Tribe



EXECUTIVE DIRECTOR

Buna George
CEO, LG Advising LLC
Exclusively Serving
the Greater Yuma Port Authority



SUCCESSSES

ESTABLISHING SAN LUIS II

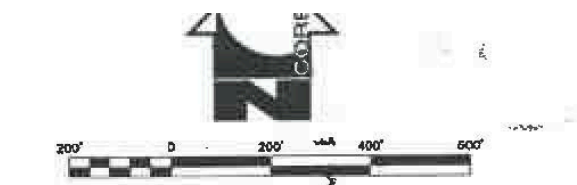
- Organization created in early 2000's
- Advocated to split commercial from pedestrian traffic
- Purchased land
- Gifted 80 developed acres to GSA
- Sold 20 acres to ADOT

GARY J. MAGRINO INDUSTRIAL PARK

- Initial land purchase for SL II yielded surplus land
- GYPA's investment to develop and improve land exceeded \$11 million dollars
- Last sale was to CPLC in 2023 for over \$7million

FACILITATING SR-195

Lorem ipsum dolor sit amet, consectetur adipiscing elit. Suspendisse quis enim pretium, bibendum ante ullamcorper, tincidunt augue. Nunc sed lorem aliquam, malesuada lectus eu, placerat lorem. Proin at aliquet sapien, vitae elementum mi.



LEGEND

—	SUBMISSION BOUNDARY
○	FOUND SURVEY MONUMENT AS NOTED
●	NEW SURVEY MONUMENT PER YUMA COUNTY STANDARD 4-030
○	NEW SURVEY MONUMENT PER YUMA COUNTY STANDARD 4-080
—	CENTER / SECTIONAL LINE
---	EXISTING LOT LINE
---	NEW LOT LINE
---	EXISTING RIGHT-OF-WAY LINE
---	NEW RIGHT-OF-WAY LINE
(M)	MEASURED DATA
(R1)	RECORDED DATA PER BOOK 23 OF PLATS PAGES 57438, Y.C.R.
(R2)	RECORDED DATA PER COUNTY ROAD MAP #3856
(R3)	RECORDED DATA PER CANAL RESERVATION RIGHT-OF-WAY PER SAME CHARACTER AND SCOPE AS ACT OF AUGUST 30, 1950 (26 STAT. 391, 43 U.S.C. 945) AS FORMALIZED PER MINUTE NO. 242 "PERMANENT AND DEFINITIVE SOLUTION TO INTERNATIONAL PROBLEM OF THE SALINITY OF THE COLORADO RIVER" DATED 8/30/1973.
(R4)	RECORDED DATA PER FEE #2012-29215
(R5)	RECORDED DATA PER FEE #2012-03656
(C)	CALCULATED DATA
R/W	RIGHT-OF-WAY
Y.C.R.	YUMA COUNTY RECORDS
APN-000-00-000	ASSESSOR'S PARCEL NUMBER
P.U.E.	PUBLIC UTILITY EASEMENT
10	NEW LOT NUMBER
---	NEW BUILDING SETBACK LINE AND DRAINAGE EASEMENT WHERE NOTED
---	NEW EASEMENT

ASSESSOR'S PARCEL NUMBER
A PORTION OF APN 227-23-001

UNIT NO. 2 AREA
104.6785 ACRES

DATE PREPARED
JANUARY 2015

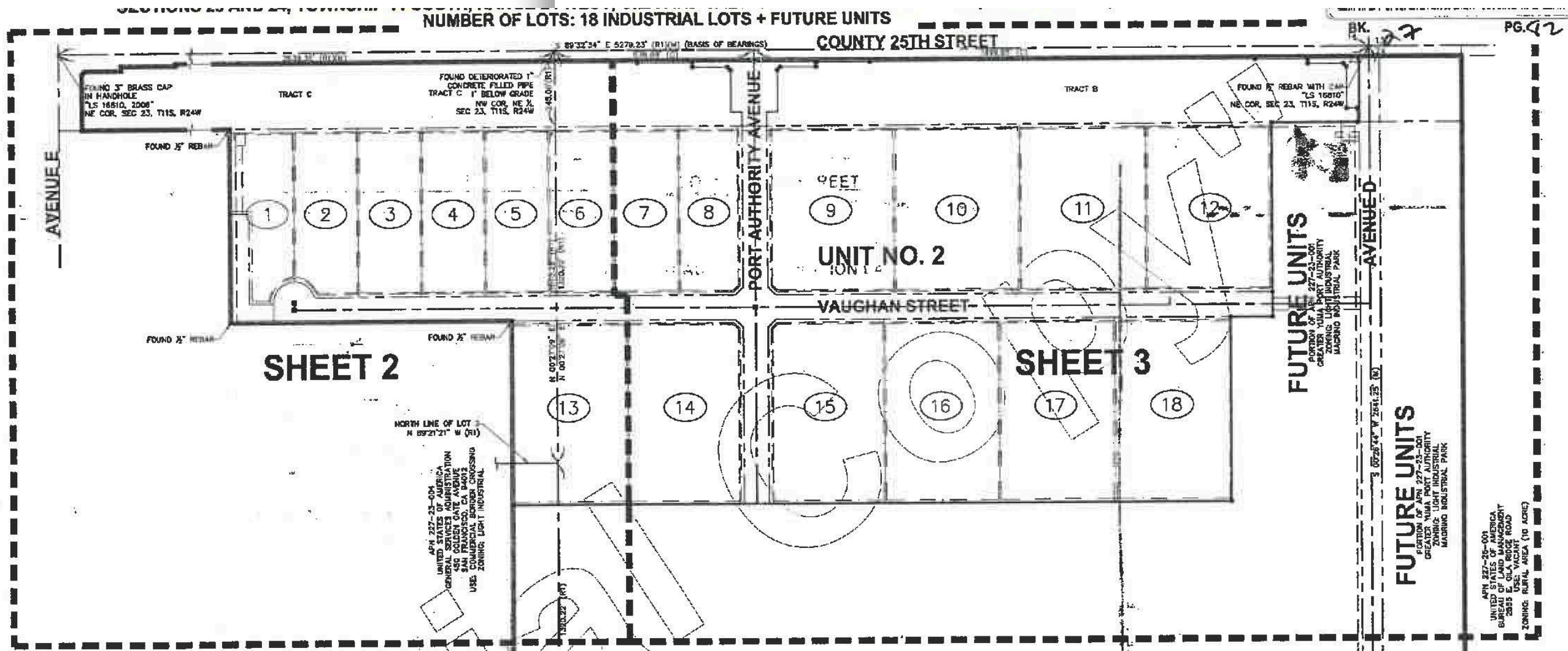
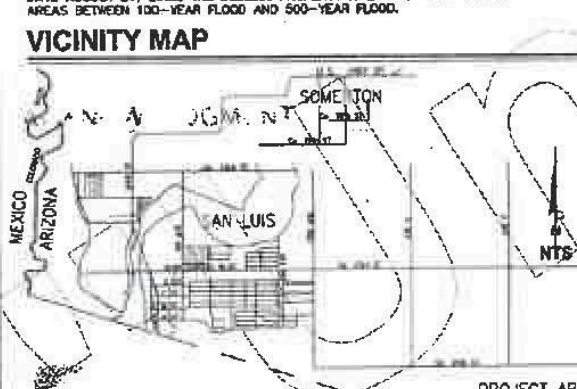
BASIS OF BEARING
THE SOUTH LINE OF SECTION 14C ALSO BEING THE NORTH LINE OF SECTION 23, TOWNSHIP 11 SOUTH, RANGE 24 WEST, G1A AND SALT RIVER BASE AND MERIDIAN, YUMA COUNTY, ARIZONA, AS RECORDED IN FEE #2007-18783, BOOK 23 OF PLATS, PAGES 57456, YUMA COUNTY RECORDER'S OFFICE.

BENCHMARK
NAMED: 5 89°32'34" E
ELEVATION = 184.99

ZONING
CURRENT CITY OF SAN LUIS ZONING: L-1 (LIGHT INDUSTRIAL)

FLOOD ZONE DESIGNATION
PER FLOOD INSURANCE RATE MAP (PANEL NUMBER 04027021594) EFFECTIVE DATE AUGUST 27, 2008, THE SUBJECT PROPERTY IS LOCATED WITHIN ZONE X AREAS BETWEEN 100-YEAR FLOOD AND 500-YEAR FLOOD.

VICINITY MAP



SURVEYOR'S CERTIFICATE
I HEREBY CERTIFY THAT THE SUBDIVISION SHOWN HEREON WAS MADE UNDER MY DIRECTION DURING JANUARY 2015 AND THAT THIS SUBDIVISION CONFORMS TO ALL REGULATIONS AND REQUIREMENTS OF THE SUBDIVISION REGULATIONS OF THE CITY OF SAN LUIS, ARIZONA.

Douglas J. Nicholls
DOUGLAS J. NICHOLLS, P.E., RLS
Exp. 03/31/15

- NOTES**
1. ALL NEW PROPERTY CORNERS TO BE SET WITH A 3" REBAR WITH CAP STAMPER, 1.5 3800#
 2. SEE SHEETS 2 AND 3 OF 3 FOR LOT AREAS.
 3. SEE SHEET 2 FOR INDICATIONS AND ACKNOWLEDGEMENT.

APPROVED

STATE OF ARIZONA } SS
CITY OF SAN LUIS }

THIS SUBDIVISION AS PLATTED HEREON HAS BEEN APPROVED BY THE MAYOR AND THE CITY COUNCIL OF THE CITY OF SAN LUIS, ARIZONA.

MAYOR
Robert Adams 1/9/15

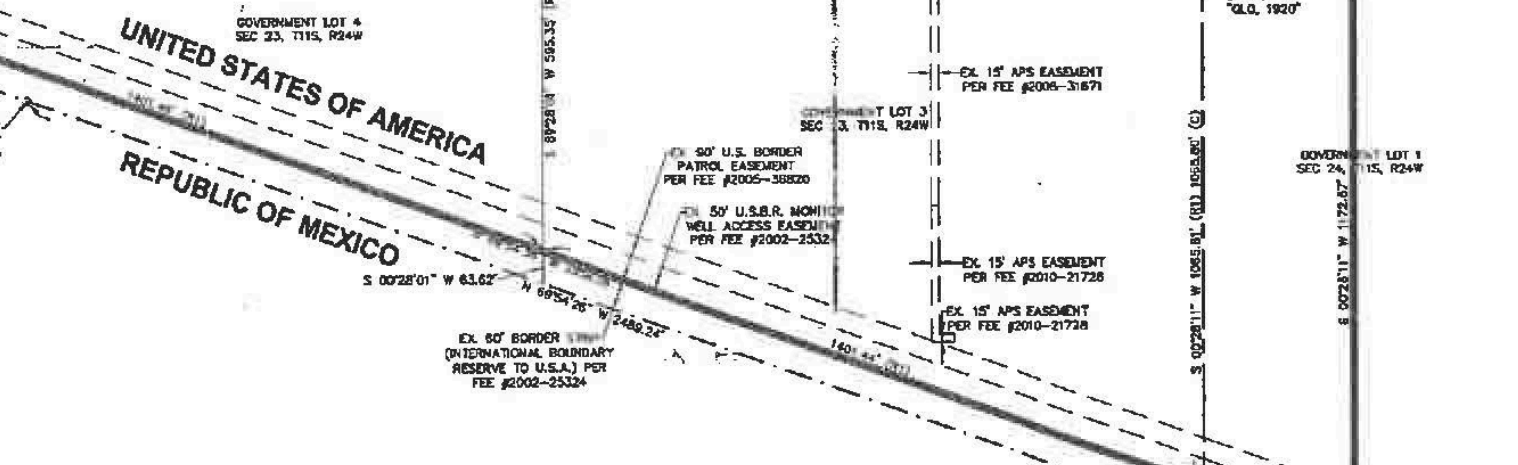
CITY MANAGER
John Starkey 6-9-15

CITY PLANNING & ZONING DIRECTOR



INTERNATIONAL MONUMENT
"M-202, STA 0+428"
CONCRETE MONUMENT

INTERNATIONAL MONUMENT
"UCSSG, 1953"
4" BRASS CAP



5/20/15 2:00:13 13-078069a13-078 Magrino Industrial Park Final Plat.dwg - Core Engineering Group, PLLC





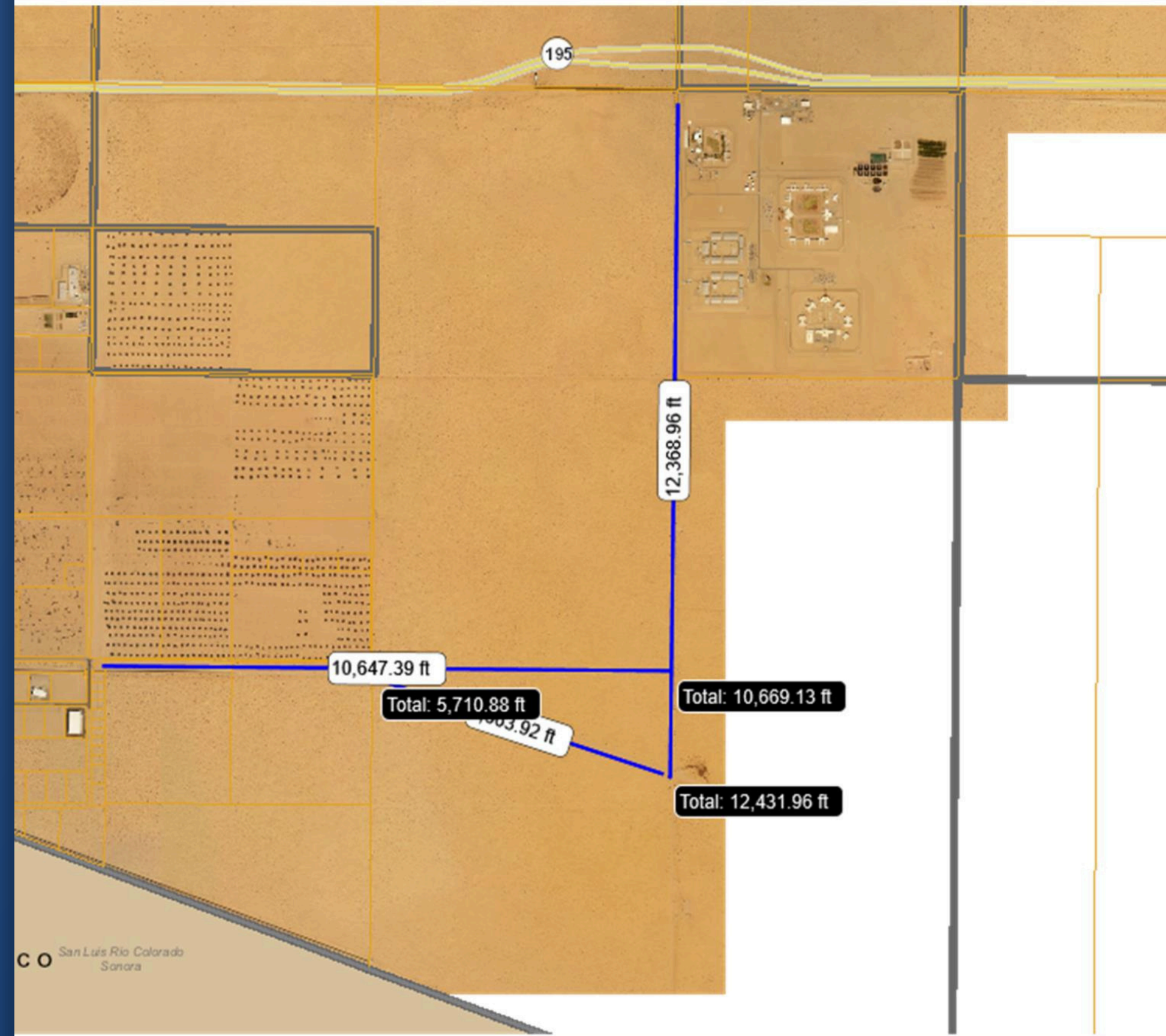
CURRENT INITIATIVES

- County 25th extension
- Fund allocations for a feasibility Study for POV's at San Luis II
- Data analytic project
- Working groups
- Cash call suspension



CURRENT INITIATIVES

- County 25th extension
- Fund allocations for a feasibility Study for POV's at San Luis II
- Data analytic project
- Working groups
- Cash call suspension



CURRENT INITIATIVES

- County 25th extension
- Fund allocations for a feasibility Study for POV's at San Luis II
- Data analytic project
- Working groups
- Cash call suspension



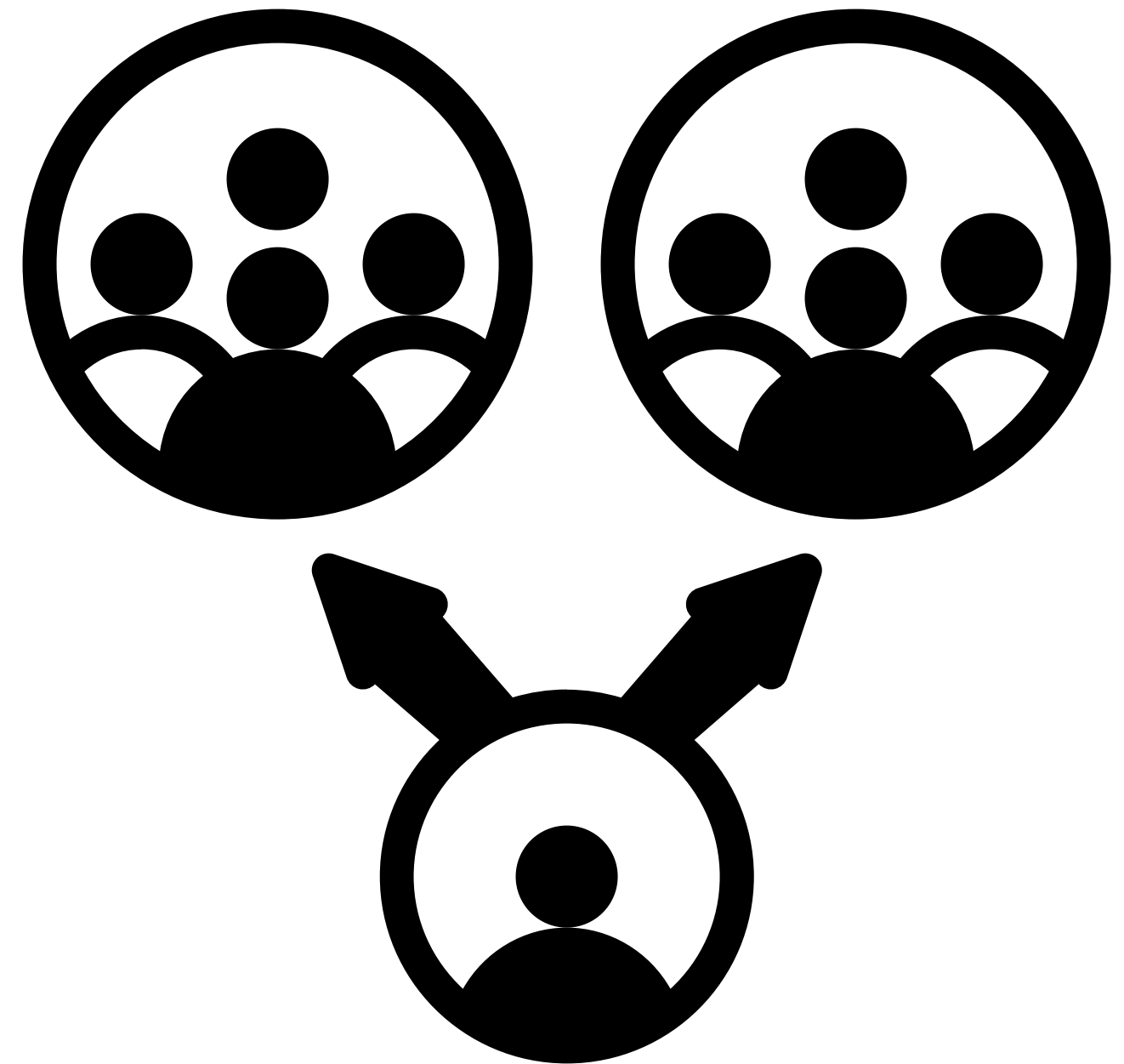
CURRENT INITIATIVES

- County 25th extension
- Fund allocations for a feasibility Study for POV's at San Luis II
- Data analytic project
- Working groups
- Cash call suspension



CURRENT INITIATIVES

- County 25th extension
- Fund allocations for a feasibility Study for POV's at San Luis II
- Data analytic project
- Working groups
- Cash call suspension



CURRENT INITIATIVES

- County 25th extension
- Fund allocations for a feasibility Study for POV's at San Luis II
- Data analytic project
- Working groups
- Cash call suspension





USMCA Review

- 2026, first year for modifications
- GYPA has a voice with Governor's office working group & Texas working group (NASCO)



Trade and Tariff's
Monitor the immediate impact on imported goods to the US consumer
Advocate for a level playing field



Act as an advocacy partner for CBP.
Working in conjunction with Yuma County to list CBP agent recruitment and retention to their legislative priority list for more funds to be allocated to the department and streamline hiring



load from
nstime.com

marked comp image is for previewing purposes only.

ID 85540018

© Yuriy Kirsanov | Drea



Partnerships with
Nogales Port Authority
Douglas Port Authority



International allies
Consul General of Nogales
Consulado Mexicano



ADOT
Industry Meetings
Driver Trainings
Recruitment Efforts

VISION

01

Continued Growth -
SL I Remodel
SL II Pov's

02

Advocacy for CBP Staffing
Allocation of resources for operations

MISSION

01

Industry Recruitment to escalate numbers
of commercial crossings

02

Efficient logistical routes
San Luis Port to major interstates and
industrial corridors

**THANK
YOU**



GYPA

**Greater
Yuma
Port
Authority**