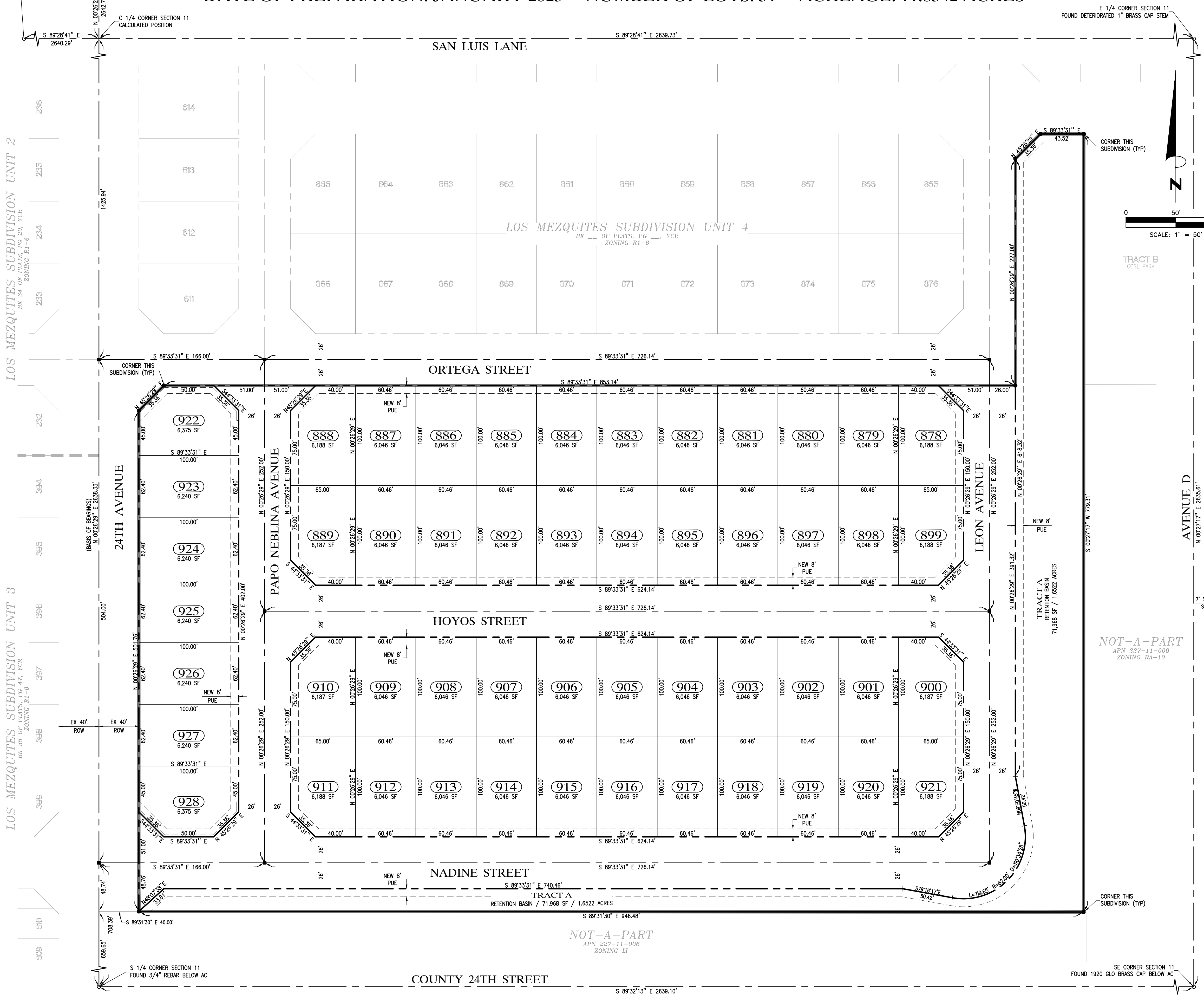


PRELIMINARY PLAT LOS MEZQUITES SUBDIVISION UNIT 5

A SUBDIVISION OF LOT 877 OF LOS MEZQUITES SUBDIVISION UNIT 4 AS RECORDED IN BOOK ___ OF PLATS, PAGE ___, YCR,
LOCATED IN A PORTION OF THE SOUTHEAST QUARTER OF SECTION 11, TOWNSHIP 11 SOUTH,
RANGE 24 WEST OF THE GILA AND SALT RIVER BASE AND MERIDIAN, YUMA COUNTY, ARIZONA
DATE OF PREPARATION: JANUARY 2025 NUMBER OF LOTS: 51 ACREAGE: 11.8342 ACRES



VICINITY MAP



LEGEND

| | |
|--|--|
| | CENTERLINE / SECTION LINE |
| | SUBDIVISION BOUNDARY |
| | RIGHT OF WAY LINE |
| | SETBACK LINE |
| | EASEMENT LINE (TYPE AS SHOWN) |
| | NEW LOT NUMBER |
| | NEW LOT AREA IN SQUARE FEET |
| | NEW STREET MONUMENT PER CITY OF YUMA STD No. 4-030 |
| | NEW BOUNDARY MONUMENT PER CITY OF YUMA STD No. 4-015 |
| | EXISTING MONUMENT (TYPE AS NOTED) |
| | RIGHT OF WAY |
| | NON ACCESS EASEMENT |
| | PUBLIC UTILITY EASEMENT |
| | ASSESSOR'S PARCEL NUMBER |
| | BK |
| | DOCKET |
| | PAGE |
| | YUMA COUNTY RECORDS |
| | ARIZONA HIGHWAY DEPARTMENT |
| | GENERAL LAND OFFICE |

BASIS OF BEARINGS

THE MID-SECTION LINE OF SECTION 11, T11S, R24W, G&SR&M, YUMA COUNTY, ARIZONA, AS SHOWN ON DKT 1848, PG 711, YCR.
BEARING: N 00°26'29" E

ZONING

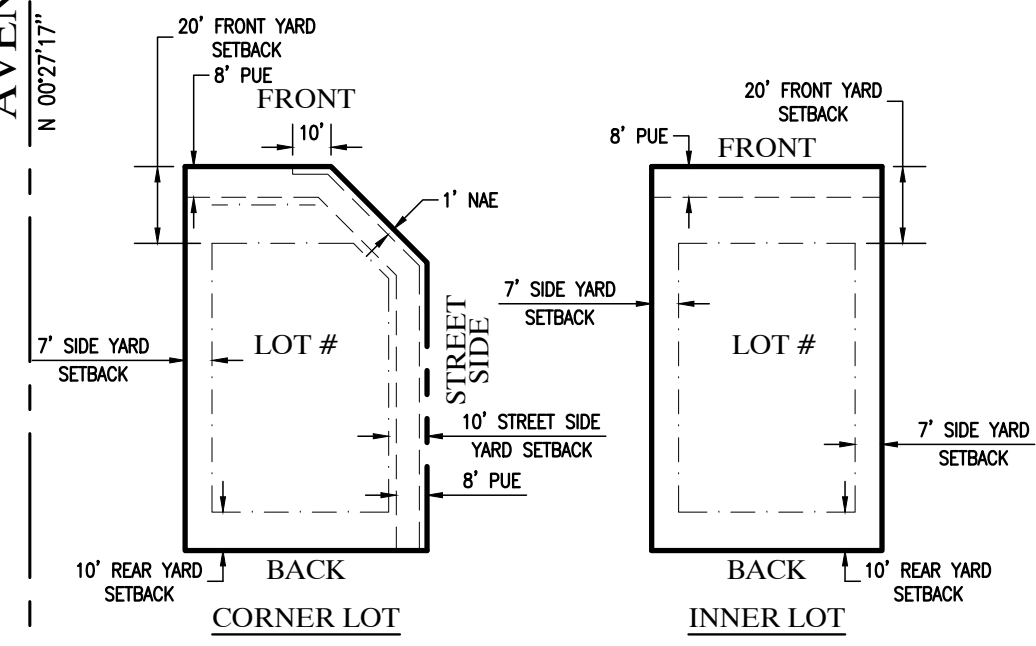
R1-6 MEDIUM DENSITY RESIDENTIAL

OWNER/DEVELOPER

RIEDEL HOLDINGS, LLC
P.O. BOX 1649
SAN LUIS, AZ 85349
(928) 627-8593

RESTRICTIVE COVENANTS

HAVE BEEN RECORDED CONCURRENTLY AND ARE A PART OF THIS PLAT



TYPICAL LOT LAYOUT

SURVEYOR'S CERTIFICATE

I HEREBY CERTIFY THAT I AM A LAND SURVEYOR LISTED ON THE ROSTER OF ACTIVE REGISTRANTS BY THE STATE BOARD OF TECHNICAL REGISTRATION OF ARIZONA AND THAT THIS MAP CONSISTING OF ONE (1) SHEET CORRECTLY REPRESENTS A SURVEY MADE UNDER MY SUPERVISION. THAT ALL MONUMENTS SHOWN HEREON ACTUALLY EXIST AND THEIR POSITIONS ARE CORRECTLY SHOWN.

JUAN N. LOPEZ RLS No. 22767

PREPARED BY:

EDAIS Engineering, Inc.
3075 S. Ave. 4E Yuma, Arizona 85365
(928) 344-3568 FAX (928) 341-1076
EMAIL: najeh@Edaisgroup.com