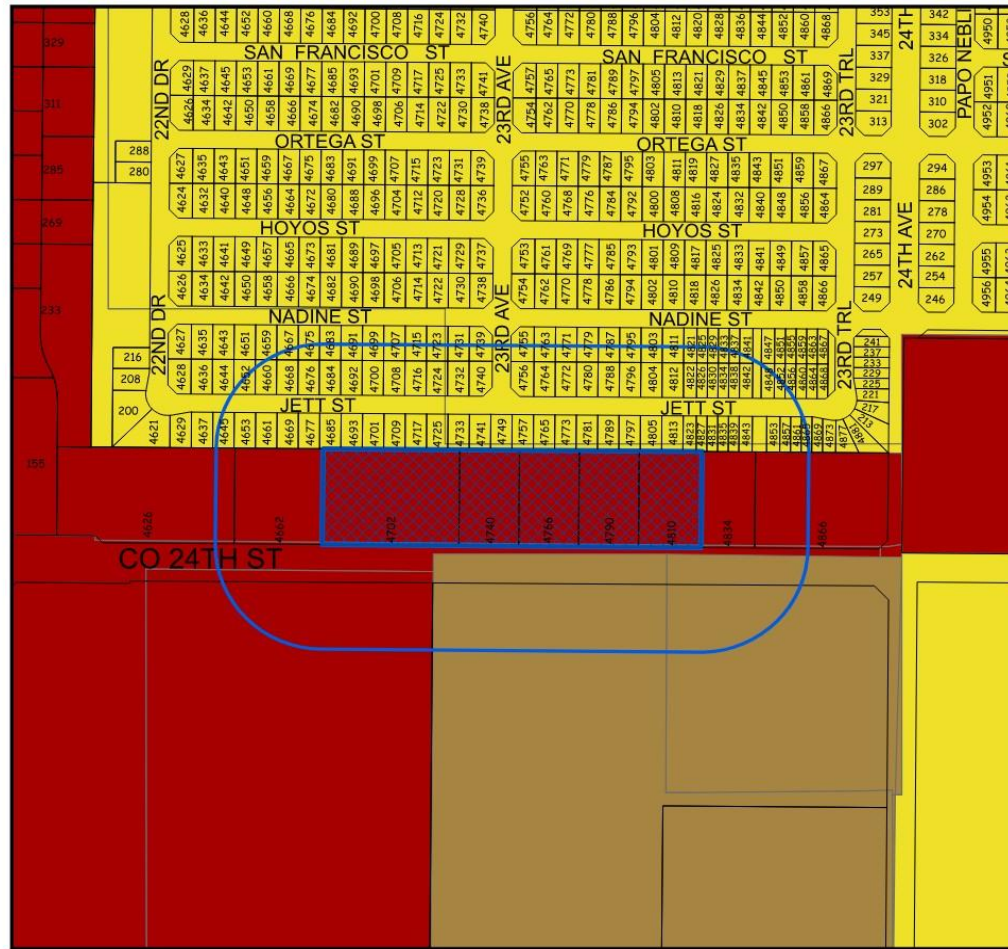



CITY COUNCIL MEETING
MAY 13, 2026

Minor Amendment Case No. 2026-0062 &
Rezoning Case No. 2026-0063
Colibri Townhomes



Location of Subject Property

 4702, 4740, 4766, 4790, 4810 CO E 24TH ST

 300' NOTIFICATION BUFFER

LOCATION MAP

 Commercial

 Low Density

 High Density

MINOR AMENDMENT

CASE #
2026-0062

DATE:

03/11/2026

CHECKED BY:

JUAN TEJEDA

Development Services



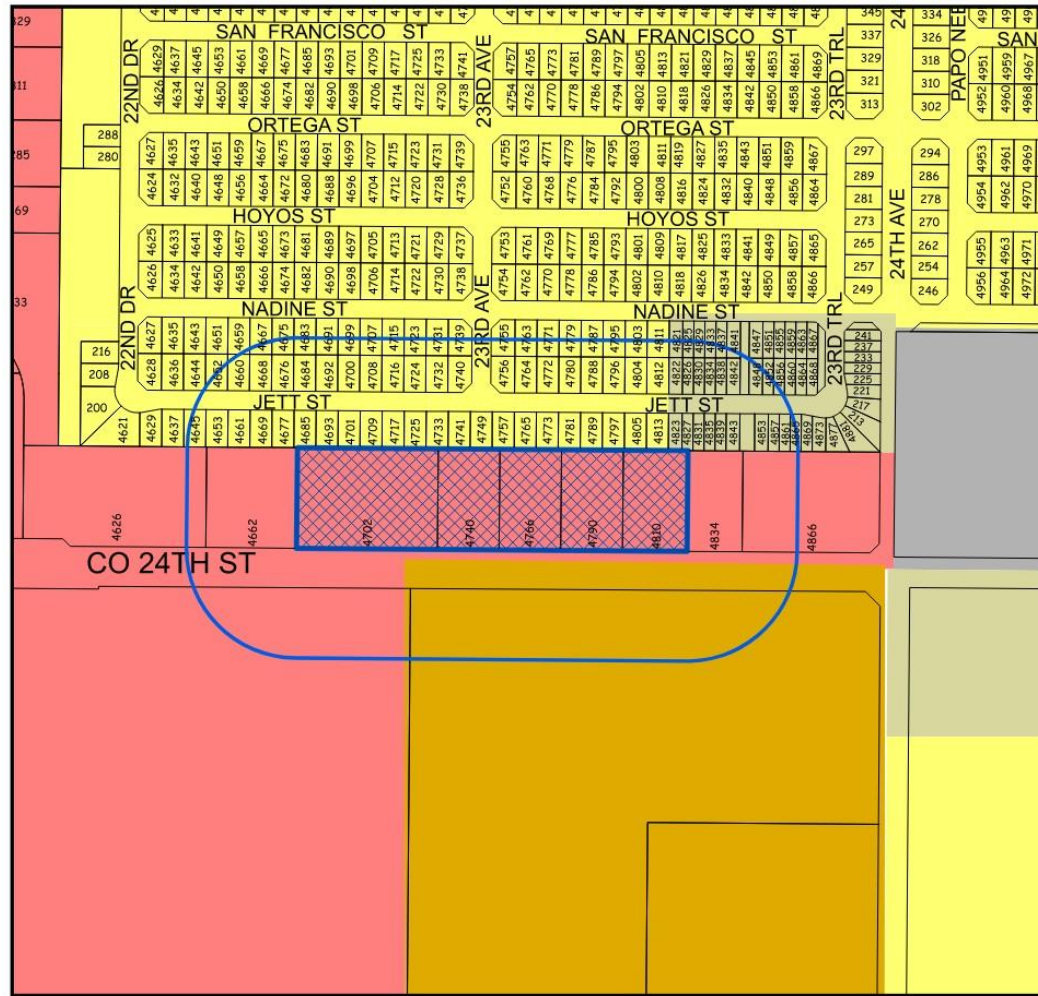
GIS

CREATED BY:


CARLOS FLORES

APPROVED BY:

JOSE A GUZMAN




Location of Subject Property

 4702,4740, 4766, 4790, 4810 CO E 24TH ST

 300' NOTIFICATION BUFFER

LOCATION MAP

-  R-3
-  LI
-  HI
-  R-1-6
-  C-2
-  R-2

REZONING

CASE #
2026-0063

DATE:

03/11/2026

CHECKED BY:

JUAN TEJEDA

Development Services



GIS

CREATED BY:

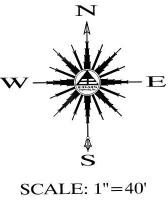
CARLOS FLORES

APPROVED BY:

JOSE A GUZMAN

UNIT COUNT:
 2 BEDROOM : 30 UNITS
 3 BEDROOM : 32 UNITS
 TOTAL : 62 UNITS

TOTAL AREA :
 292,307.10 SF / 6.7104 AC
 TOTAL OPEN SPACE :
 67,979.23 SF / 1.5606 AC
 PERCENT OPEN SPACE : 23%



REVISIONS
 CITY OF SOMERTON
 COMMENTS 3/10/2025

LOTS 32,33, 34,
 35 AND 36 OF
 PLAZA COLIBRI

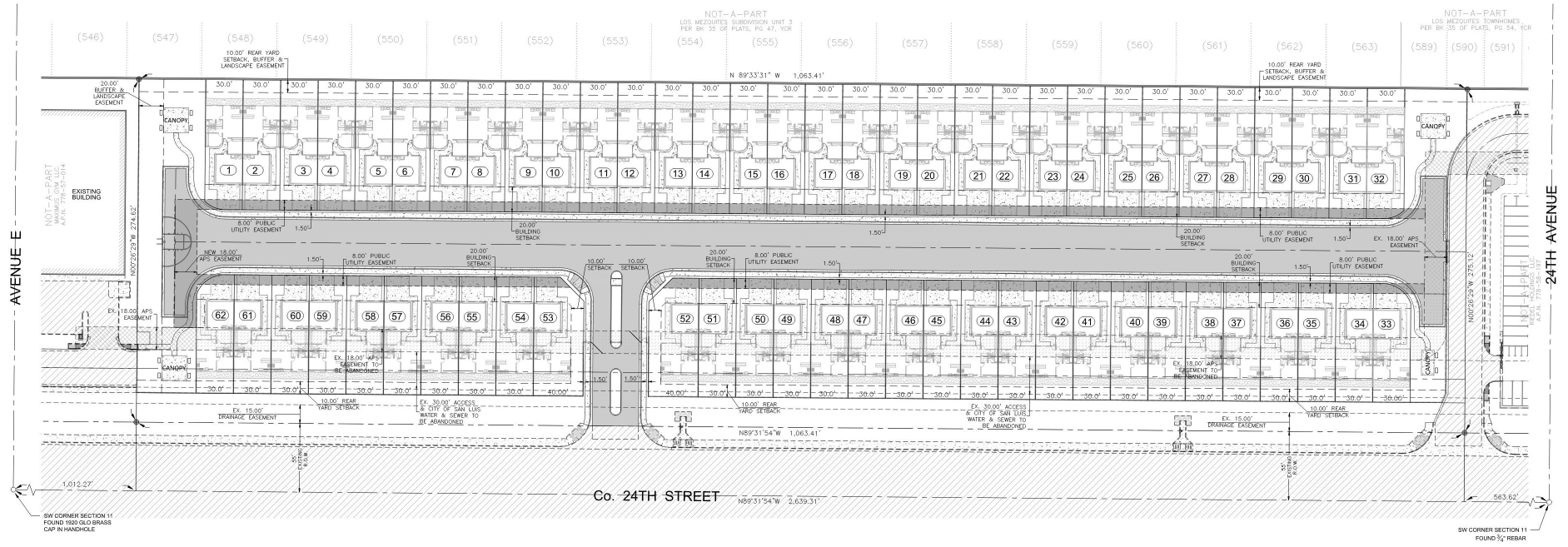
SITE PLAN

COLIBRI
 TOWNHOMES



DATE:
 JANUARY 2026
 DRAWN:
 LPR
 CHECKED:
 NKE
 PROJECT:
 26-007
 SHEET NUMBER

C-1



Aerial Colibri Townhomes

