

**RESOLUTION NO. 19-R-28**

**A RESOLUTION BY THE CITY COUNCIL OF THE CITY OF SCHERTZ, TEXAS AUTHORIZING EXPENDITURES IN EXCESS OF \$50,000 WITH T.F. HARPER & ASSOCIATES A BUYBOARD PURCHASING COOPERATIVE VENDOR, AND AUTHORIZING A PURCHASE TOTALING \$104,083 FOR THE ASHLEY PARK RENOVATION RROJECT**

WHEREAS, Schertz Parks and Recreation identified maintenance needs across the park system, with Ashley Park having a significant need for repairs; and

WHEREAS, Schertz Parks and Recreation determined that a playscape feature replacement, swing set replacement, sport court replacement, and restroom remodel were the appropriate development choices for the park property; and

WHEREAS, Schertz Parks and Recreation worked with T.F. Harper & Associates, a BuyBoard vendor to provide cost estimates and a formal quote for the equipment and installation costs; and

WHEREAS, the city has a policy to seek authorization for purchases in excess of \$50,000 with a single vendor and the BuyBoard quote totals \$104,083; and

WHEREAS, the BuyBoard National Purchasing Cooperative is a national online purchasing cooperative formed between the National School Boards Association and several state school boards associations, developed to comply with state laws which require government entities to make purchases through a competitive procurement process; and

WHEREAS, BuyBoard gives public entities the advantage of leveraging the cooperative's ability to obtain bulk discounts, combined with the ease of online, web-based shopping and ordering; and

WHEREAS, purchases under the cooperative programs meet the requirements under the Texas Local Government Purchasing Code rule for cooperative purchases as adopted by the City of Schertz Resolution 11-R-41 on August 30, 2011 amending the City's purchasing policy; and

WHEREAS, the proposed park renovation will be funded out of the additional maintenance funds in the Parks Capital Outlay Improvements Over \$5,000 fund.

BE IT RESOLVED BY THE CITY COUNCIL OF THE CITY OF SCHERTZ, TEXAS THAT:

Section 1. The City Council hereby authorizes the expenditures in excess of \$50,000 with T.F. Harper & Associates and authorizes the purchase of \$104,083 for the Ashley Park renovation project (in attached Exhibit A.)

Section 2. The recitals contained in the preamble hereof are hereby found to be true, and such recitals are hereby made a part of this Resolution for all purposes and are adopted as a part of the judgment and findings of the City Council.

Section 3. All resolutions, or parts thereof, which are in conflict or inconsistent with any provision of this Resolution are hereby repealed to the extent of such conflict, and the provisions of this Resolution shall be and remain controlling as to the matters resolved herein.

Section 4. This Resolution shall be construed and enforced in accordance with the laws of the State of Texas and the United States of America.

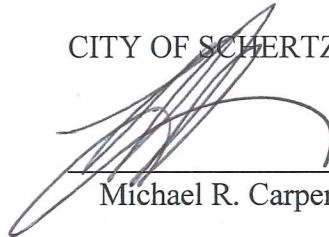
Section 5. If any provision of this Resolution or the application thereof to any person or circumstance shall be held to be invalid, the remainder of this Resolution and the application of such provision to other persons and circumstances shall nevertheless be valid, and the City Council hereby declares that this Resolution would have been enacted without such invalid provision.

Section 6. It is officially found, determined, and declared that the meeting at which this Resolution is adopted was open to the public and public notice of the time, place, and subject matter of the public business to be considered at such meeting, including this Resolution, was given, all as required by Chapter 551, Texas Government Code, as amended.

Section 7. This Resolution shall be in force and effect from and after its final passage, and it is so resolved.

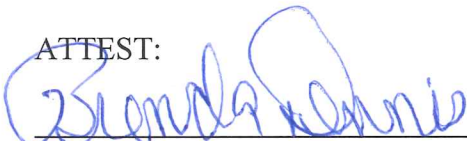
PASSED AND ADOPTED, this 5<sup>th</sup> day of March, 2019.

CITY OF SCHERTZ, TEXAS

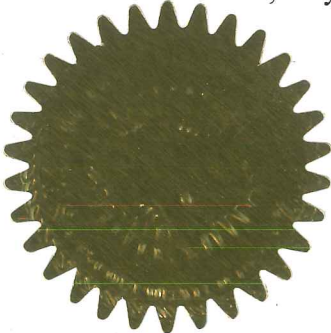


Michael R. Carpenter, Mayor

ATTEST:



Brenda Dennis, City Secretary



**EXHIBIT A**

**BUYBOARD QUOTE FROM T.F. HARPER & ASSOCIATES**



**QUOTE**

103 Red Bird Lane  
Austin, Texas  
78745-3122

TO: City of Schertz  
Attn: Jared Montney  
Address: 10 Commercial Place, Schertz, Texas 78154  
Install Site: Ashley Park, Schertz, Texas 78154  
Phone: 210-488-4252  
Email: [jmontney@schertz.com](mailto:jmontney@schertz.com)

**BUYBOARD CONTRACT #512-16**

PLEASE FAX YOUR PO & SIGNED QUOTE TO  
BUYBOARD & T.F. HARPER & ASSOCIATES LP TO  
INSURE COMPLIANCE & RECEIPT OF YOUR  
ORDER.

QUOTE #: 022119-07TB  
DATE: February 21, 2019

**Ashley Park Renovations**

QTY	DESCRIPTION OF EQUIPMENT	UNIT PRICE	TOTAL COST
<b><u>Playground:</u></b>			
1	Dynamo #DX-201, Twin Towers 201		\$33,613.00
1	GameTime 2 Bay PrimeTime Swings w/ (2) Belt Seats, (1) Tot Seat & (1) Expression Swing		\$4,328.00
	<b>Less Buyboard Discount</b>		(\$3,578.00)
1	Freight on Above Equipment		\$2,987.00
1	Installation of Above Equipment within Existing Borders and Ground Cover		\$13,970.00
122	L.F. Concrete Sidewalk 5' W X 4" Thick w/ Standard Steel Reinforcing (from Asphalt Trail to Playground)		\$5,795.00
	<b>TOTAL - Playground</b>		<b>\$57,115.00</b>
<b><u>Basketball Court:</u></b>			
1	50' x 70' Concrete Basketball Court, 5" Thick w/ Standard Steel Reinforcing; Included: Base Material for Sub Base Pad, 3000 psi Concrete, White Line Striping for Basketball Play.		\$ 42,625.00
	Furnish & Install (2) Sportsplay #541-616 Basketball Goals, complete with heavy duty 4.5" bent post (galvanized), painted aluminum fan backboard and double strength super goal with steel chain net and 4' extension.		
	<b>TOTAL - Basketball Court</b>		<b>\$42,625.00</b>
<b><u>Restroom Stone Façade:</u></b>			
1	Furnish & Install 3' H X 60' Brick Ledge w/ Sloped Cap		\$3,685.00
2	Restroom Sign (one men & one women), furnished & installed		\$658.00
	<b>TOTAL - Stone Façade</b>		<b>\$4,343.00</b>

**QUOTE IS VALID FOR 30 DAYS FROM DATE OF QUOTE OR FROM DATE OF REVISION**

**NOT INCLUDED: Sales Tax (RESALE OR EXEMPTION CERTIFICATE REQUIRED), Permits/Bonds/Fees (if required), Site Work in Excess of Normal Installation (example: site prep - excavation/infill, concrete slab, french drains, excess rock removal, landscaping), Demo, Borders & Ground Cover.**

**Payment Terms: City of Schertz Purchase Order or 50% due with signed quote.**

**Estimated Delivery & Installation: 12 weeks after receipt of order and color selections.**

**Accepted by:** \_\_\_\_\_

**Date:** \_\_\_\_\_ **P.O. # (if applicable):** \_\_\_\_\_

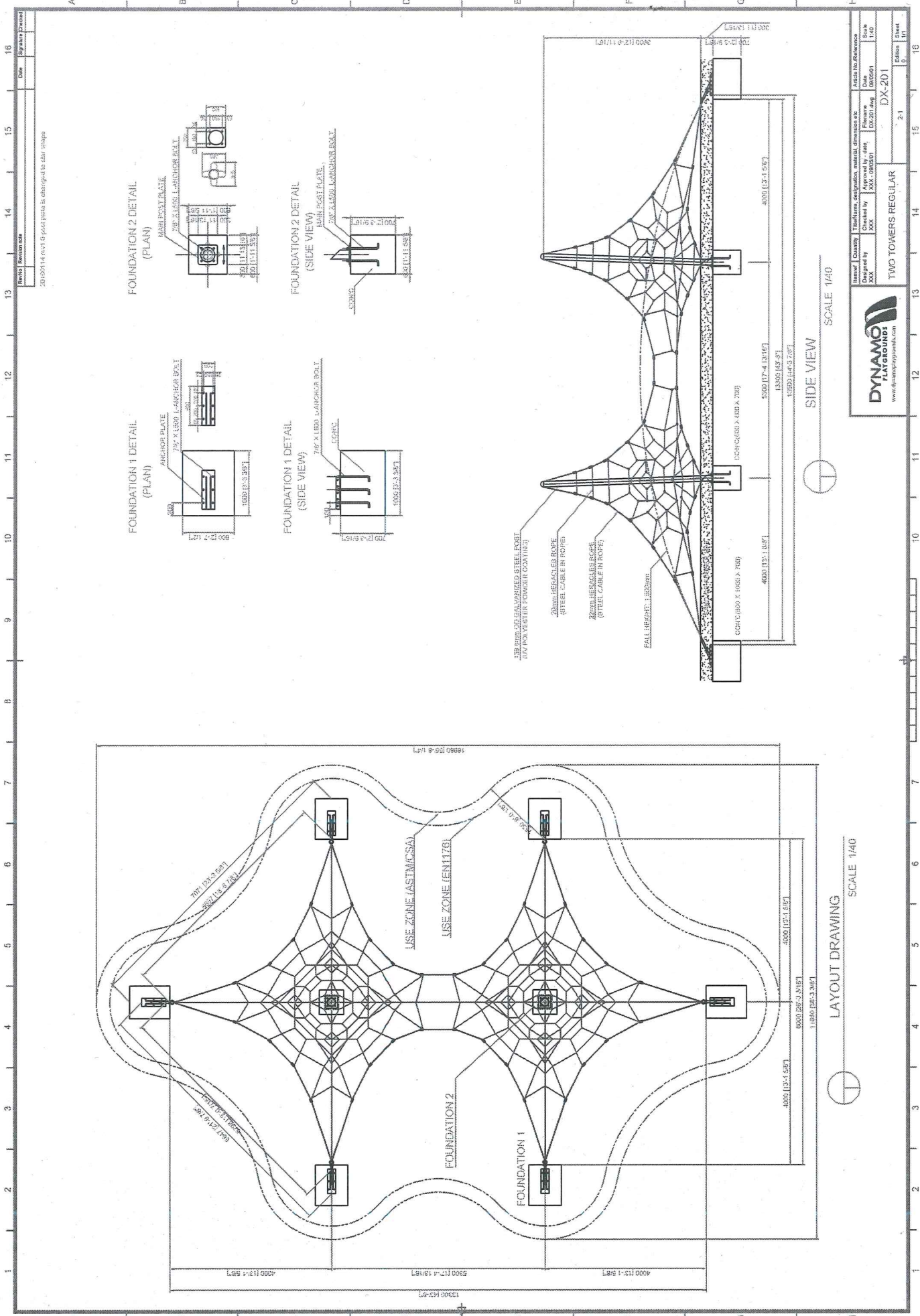
**PLEASE ISSUE PURCHASE ORDER IN VENDOR NAME OF T.F. HARPER & ASSOCIATES, LP**

Thank you for the opportunity to quote this equipment

Shawn Cooper

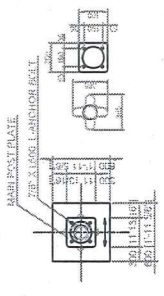
*Commercial Play and Recreational Equipment*

Ashley Park Renovations- City of Schertz [www.tfharper.com](http://www.tfharper.com) -- 800.976-0107 -- local: 512.440.0707 -- fax: 512.440.0736

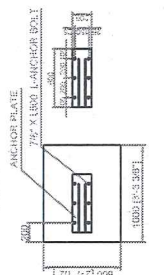


2019/11/14 every 6-pole panel is changed to 6x6x 1/2" angle

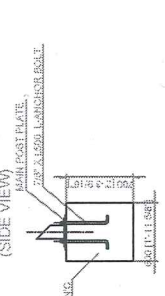
FOUNDATION 1 DETAIL (PLAN)



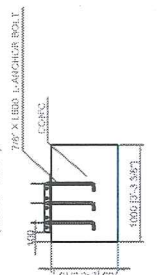
FOUNDATION 2 DETAIL (PLAN)



FOUNDATION 1 DETAIL (SIDE VIEW)



FOUNDATION 2 DETAIL (SIDE VIEW)



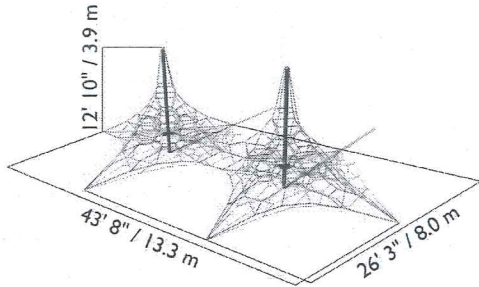
SIDE VIEW SCALE 1/40



LAYOUT DRAWING SCALE 1/40



Item #	Quantity	Trade/Item designation, material, dimension etc.	Article No./Reference
XXX	XXX	Approved by: <i>dmk</i>	Date: 08/05/01
XXX	XXX	Checked by: <i>dmk</i>	Date: 08/05/01
XXX	XXX	Designed by: <i>dmk</i>	Date: 08/05/01
TWO TOWERS REGULAR			Scale 1/40
DX-201			Sheet 0 of 1



Product Name	Two Towers Regular
Product Number	DX-201
Size -- Length	13.30 m / 43' 8"
Size -- Width	8.00 m / 26' 3"
Size -- Height	3.90 m / 12' 10"
Shipping Weight	575 kg / 1267.7 lb
Shipping Volume	2.00 m <sup>3</sup> / 70.6 ft <sup>3</sup>
Foundations	8
Concrete Volume	3.86 m <sup>3</sup> / 136.3 ft <sup>3</sup>

	<b>ASTM F-1487</b>	<b>CSA Z614</b>	<b>EN 1176</b>
Ages	5 years - 12 years	5 years - 12 years	6 years - 12 years
Capacity	60	60	60
Use Zone -- Length	16.96 m / 55' 8"	16.96 m / 55' 8"	16.30 m / 53' 6"
Use Zone -- Width	11.66 m / 38' 3"	11.66 m / 38' 3"	11.00 m / 36' 1"
Fall Height	1.83 m / 6' 0"	1.37 m / 4' 6"	0.51 m / 1' 8"

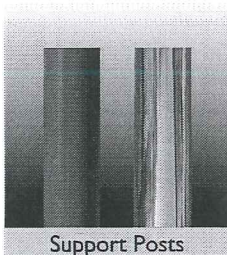
\*Note: Concrete must be minimum 3500 PSI / 25MPa



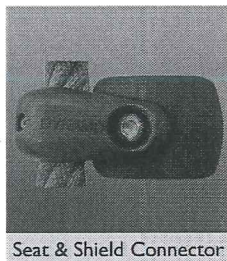
**Product Features:**

- SUPPORT POSTS:** This will be 5 1/2" (139.8mm) OD galvanized steel tubing, finished with polyester powder coating.
- POST SHIELDS:** Where required, these will completely surround the post to fill in openings in the net, preventing entrapments. Shields will be made of a textile-reinforced flexible rubber material and secured with bolts.
- CLIMBING NETS:** This will be 20mm diameter and 22mm diameter, polyamide (nylon) rope cable with UV protection and fire retardant solution. Each rope consists of 6 strands each containing 24 steel reinforcing strands within a polyamide sleeve, wrapped around a solid polyamide core for a total of 144 steel reinforcing strands; each end of the cable having a junction loop attached onto the cable with a finished aluminum sleeve and lined with a galvanized steel wear bar. Edge ropes will contain a solid core of wound steel cables in place of the polyamide core for a total of 168 steel reinforcing strands. Rope shall achieve a Class 7-8 Colourfastness rating.
- BALL KNOTS:** This will be a one-piece compressed aluminum ball, compressed in place with 150,000 pounds force (667 kN) to prevent the connection from moving and causing premature cable wear.
- BASIC FASTENERS:** All fasteners for component attachments are stainless steel.
- TURNBUCKLES:** These will be steel alloy that will withstand a maximum load of over 87,675 pounds force (390 kN) along the main axis.

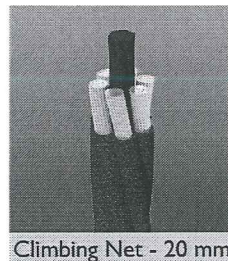
- MOUNTING PLATES:** These will be made of galvanized steel. Corner anchors will contain multiple connection points to allow for adjustability of the turnbuckles as well as connection of a safety rope. Centre mast anchors will consist of a stub post that will stabilize the mast and an anchor ring that will secure the assembly to the concrete. This two-piece assembly allows for fine positioning of the post stub to be accomplished during installation, making the process simpler and easier.
- ANCHOR BOLTS:** Mounting plates will be secured to concrete blocks with 7/8" (22mm) diameter x 20" (500mm) long "L" Anchor bolts, inserted into the wet concrete when poured.
- INSTALLATION:** This should be installed only by a licensed playground installer, trained and certified on the relevant playground standards in place in the region of installation, e.g., NPSI, CPSI or similar certified.
- COMPLIANT WITH:** **CAN/CSA-Z614-07**  
**ASTM F-1487-11**  
**EN-1176**  
**CPSIC Handbook for Public Playground Safety**
- TÜV CERTIFIED:** Certified to EN 1176:2008 TÜV Rhineland Certificate N° AK50162502
- IPEMA CERTIFIED:** The DX-201 identified in this specification sheet is IPEMA certified. The use and layout of the DX-201 conforms to the requirements of ASTM F1487 and CSA Z614. To verify product certification visit [www.ipema.org](http://www.ipema.org).
- OPTIONS:** Optional Equipment:
- Net Seat (Max. Qty: 8) #DX-NS
  - Poured-In-Place Enclosure (Max. Qty: 6) #DX-PIP-01
  - Polished Stainless Steel Post (Max. Qty: 2) #SS-POST



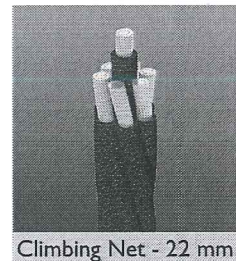
Support Posts



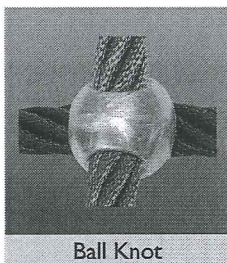
Seat & Shield Connector



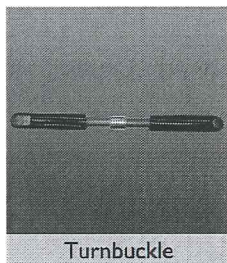
Climbing Net - 20 mm



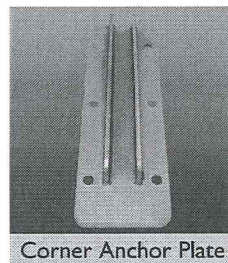
Climbing Net - 22 mm



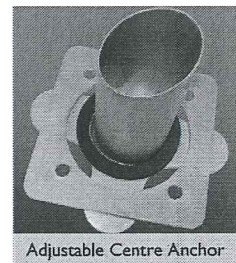
Ball Knot



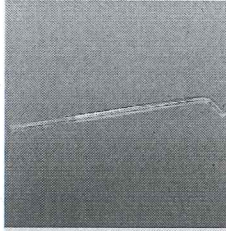
Turnbuckle



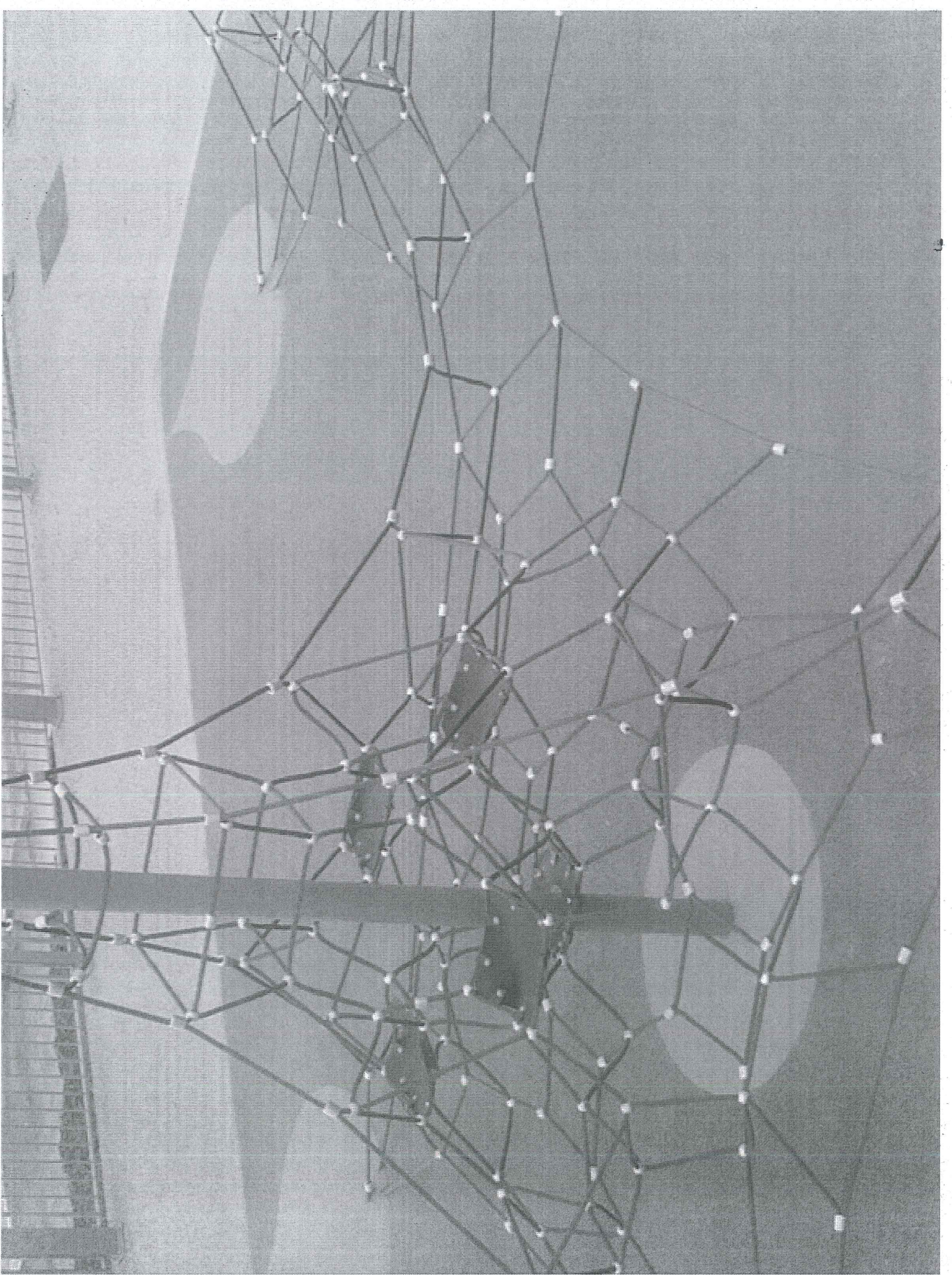
Corner Anchor Plate

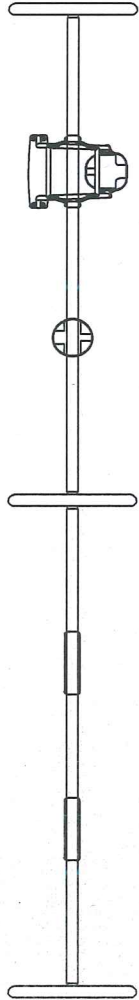


Adjustable Centre Anchor



Anchor Bolt





ADA PRIMETIME SWING  
12583

ADA PRIMETIME SWING  
ADD-A-BAY  
12584

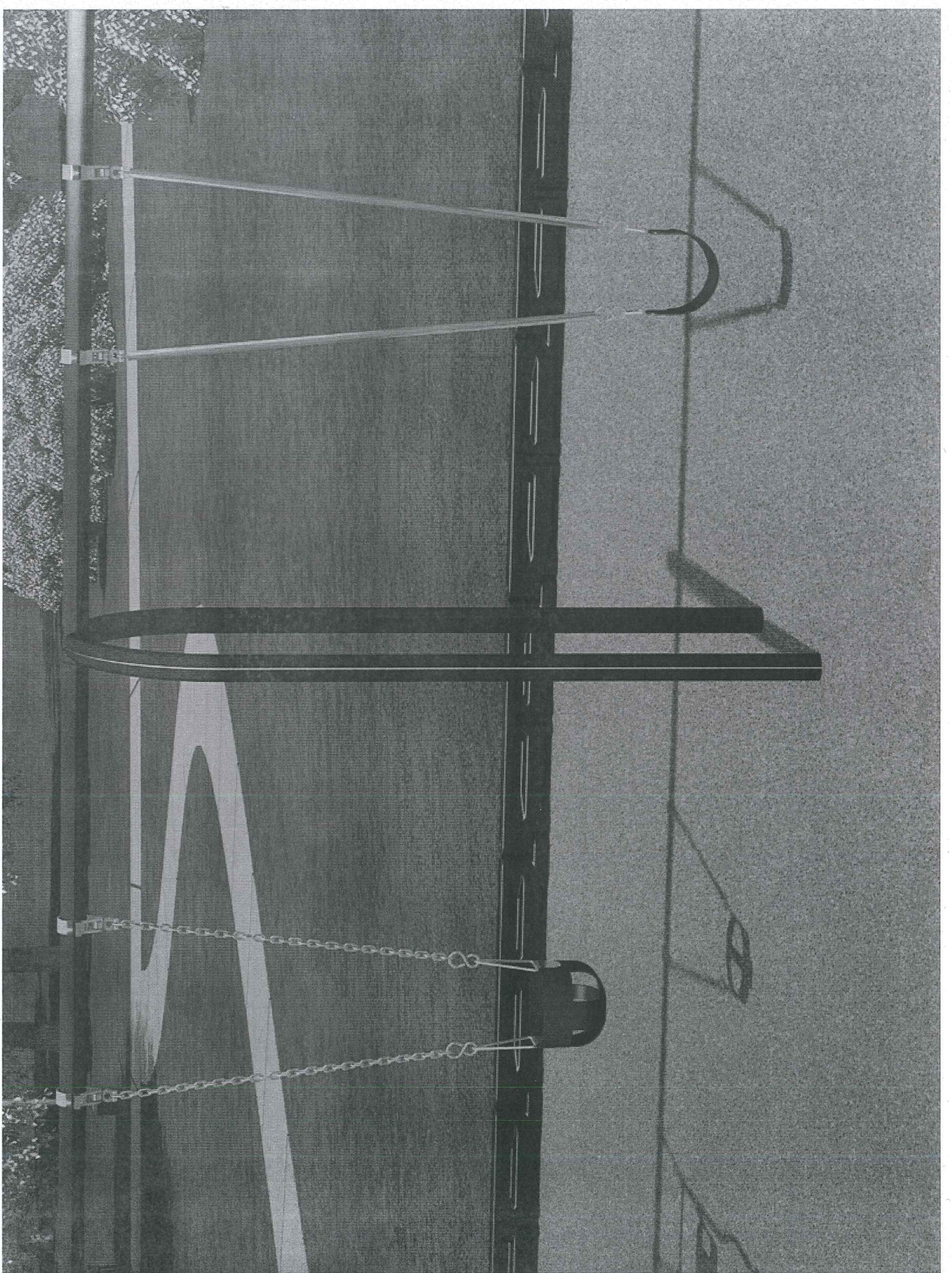
BELT SEAT PACKAGE  
3 1/2" O.D.  
1483 (2)

ENCLOSED TOT SEAT PACKAGE  
3 1/2" O.D.  
1470

EXPRESSION SWING  
3-1/2" TOPRAIL, 8' HIGH  
5128

This unit includes play events and routes of travel specifically designed to meet the 2010 DOJ ADA (Americans with Disabilities Act) Standards for Accessible Design.

Total Elevated Play C  
Total Elevated Play C  
Total Elevated Compo  
Total Accessible Grou  
Total Different Types €



Priority	Project	Description	Category	Cost	Status	Fund	Total
	FY 17-18						
	Pickrell Pool Electrical Grounding & Bonding	Bring the park up to Electrical code (except direct burial source*)	Safety	\$10,000	Completed		\$50,000
	Ashley Park Spiral Slide	Replace old slide with new pool feature	Safety	\$60,000	Completed		\$55,000
	Pickrell Park Electrical Repair Project		Safety	\$11,000	Completed		\$60,000
	Wendy Swan Pool Slide Replacement		Safety		Completed		\$63,500
	FY 18-19						\$73,500
1	Playground Safety Surfacing Replacement	All City playgrounds need to have fresh wood chips installed	Safety	\$50,000	Completed		\$77,000
2	Pickrell Park Basketball Goals	Repair basketball goals	Safety	\$5,000	Completed		\$84,500
3	Soccer Complex Well Pump Repair	Repair pump motor and replace	Repair	\$5,000	Completed		\$135,820
4	Playscope Wall Repair	Demolish existing vandalized wall and re-pour concrete wall cap	Repair	\$3,500	Completed		\$141,615
5	Replace water fountains	New fountains for Community Playscape, Ashley Park, Pickrell Park, spare	Renovate	\$10,000	In Progress		\$184,240
6	Oak Street Restroom Remodel	Repaint floors, walls, replace fixtures, add baby-changing units where possible	Renovate	\$3,500			
7	Ashley Park Restroom Remodel	Replace all fixtures, new exterior fascia, fix all floor drains, and update doors	Renovate	\$7,500			
8	Ashley Park Playscape & Swing Replacement	Remove old play structure & swings and install new structure and swings	Renovate	\$51,320			
9	Ashley Park Accessibility	Add an accessible route to the new features	Renovate	\$5,795			
10	Ashley Park Basketball Court Reconstruction	Demolish the asphalt court and goals and install a concrete court with new goals	Renovate	\$42,625			
11	Ashley Park Gaga Ball Pit	Construct new gaga ball pit	Reimagine	\$1,000		Operating Supplies	
12	Pickrell Park Picnic Tables	Replace some of the older units with new aluminum standard tables	Renovate	\$10,000	In Progress		\$194,240
13	Wendy Swan Pool Filtration	Repair filters by removing old sand and install new laterals and sand	Repair	\$1,975	In Progress		\$196,215
14	Pickrell Buildings Stucco & Stone Repair	Repair and patch all damaged stucco and stone fascia on buildings	Repair	\$5,000			\$201,215
15	Pickrell Stone Monument Engraving	Engrave park name to replace letters that were contiguously vandalized	Repair	\$2,100	Completed		\$203,315
16	Pickrell Buildings Painting Project	Repaint pool house, pavilions, and bathrooms	Renovate	\$3,900			\$207,215
17	Thulemeyer Park Renovation Project	Light pole assessment, paint buildings, parking stops, bollards, roof repairs	Renovate	\$15,000			\$222,215
						CUT LINE	\$235,000
18	Pickrell Plumbing Replacement Project	Replace all plumbing in park	Renovate	\$42,000		Park Fund	\$264,215
19	Community Playscape Pavilion	Add pavilion for reservations	Reimagine	\$35,000			
20	Pickrell Park Rocket Slide Replacement	Remove old slide and replace with new feature	Renovate	\$11,100			
21	Crescent Bend Nature Park Road Resurfacing	Repave the worst section of entrance road	Renovate	\$10,000		Street Materials	
22	Senior Center Parking Lot Project	Rebuild parking lot to add more spaces and better traffic flow	Renovate	\$50,000		Street Materials	
23	Heritage Oaks Trail Renovation	Replace old wood chip path with accessible stabilized, decomposed granite	Renovate	\$22,000		CO Bond Trails	
24	Pickrell Pool Deck Repair	Level pool deck and re-plumb drains	Reimagine	\$100,000			
25	Picnic Tables Replacement	City wide table replacement with ADA accessible concrete pads	Reimagine	\$86,000			
26	Wendy Swan Swing Set Replacement	Update swing set with Expression swing and new bay	Reimagine	\$9,000			
27	Woodland Oaks Accessibility	Add accessible routes to playscape equipment	Renovate	\$10,000			
28	Gutierrez Park Light Replacements	Replace light poles and wiring	Reimagine	\$11,000			
29	Gutierrez Park Sign Project	Replace old sign with new monument stone sign	Reimagine	\$5,500			
30	Pickrell and Wendy Swan Baby Pool Chemical Fee	Replace old manual chemical feeder with automated system	Reimagine	\$8,100			
31	Palm Park Fence Installation	Install fence on northeast side of park, between park and homes	Reimagine	\$8,000			
32	Gutierrez Sidewalk Project	Remove sidewalk and fix sub base, install ADA sidewalk and resurface parking lot	Renovate	\$42,000		Public Works Project	
33	Wendy Swan Basketball Court Refurbishment	Color coat and restripe the basketball court, replace backboards, hoops, nets	Reimagine	\$12,000			
34	Park Trash Cans Replacement	Replace rubber stand alone cans with post in ground metal covered trash cans	Reimagine	\$32,000			
35	Woodland Oaks Basketball Court Resurfacing	Color coat and restripe the basketball court, replace backboards, hoops, nets	Reimagine	\$12,000			
36	Crescent Bend Nature Park Road Resurfacing	Repave parking lot and entire access road, restripe	Reimagine	\$135,000			
37	Repair Irrigation on Schertz Parkway	From Live Oak to I-35 on Schertz Parkway repair all irrigation systems	Reimagine	\$52,000			
38	Pickrell Electrical Direct Burial Abandonment	Abandon direct burial electrical sources and replace services	Reimagine	\$50,000			
			TOTAL	\$965,915			