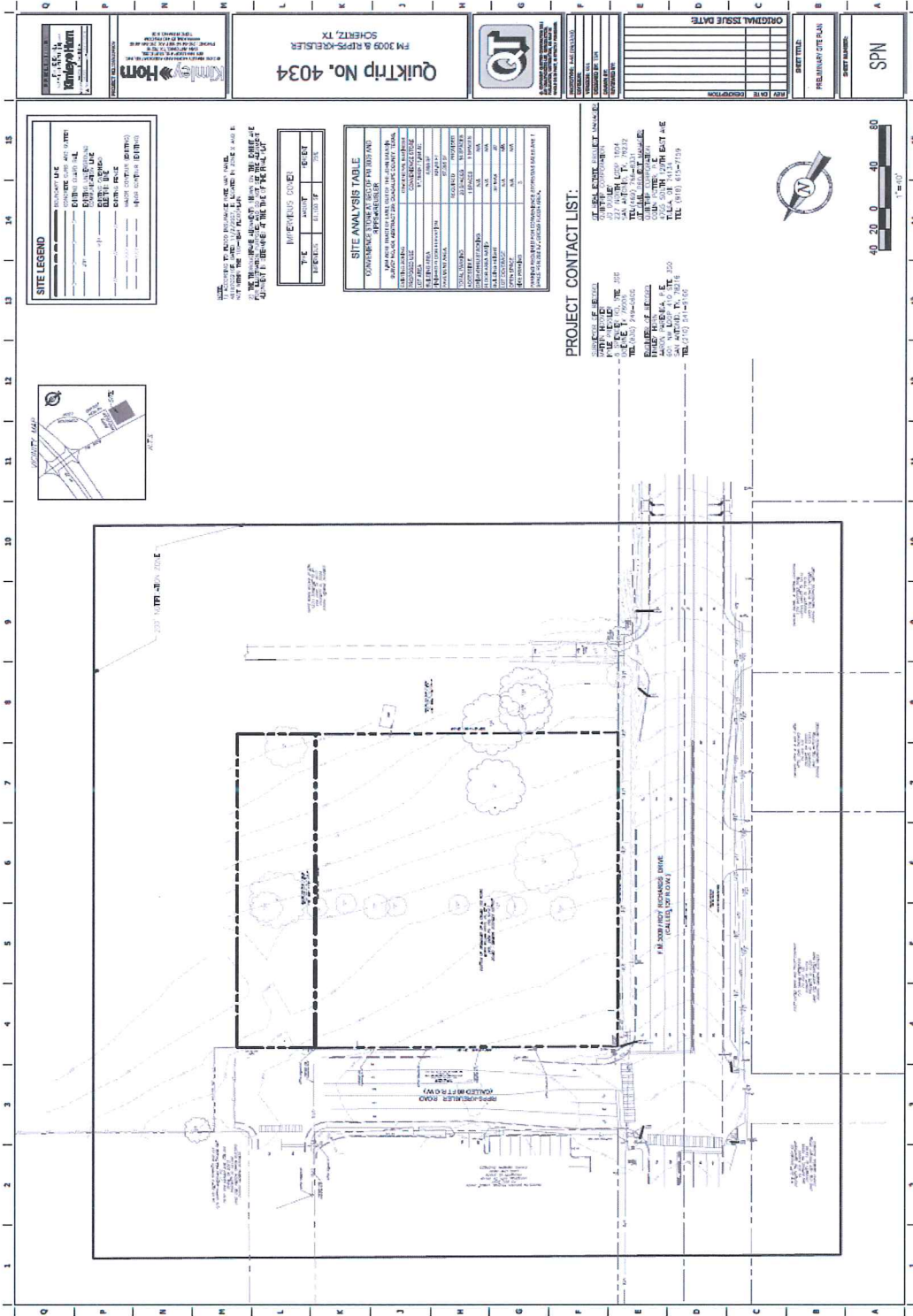


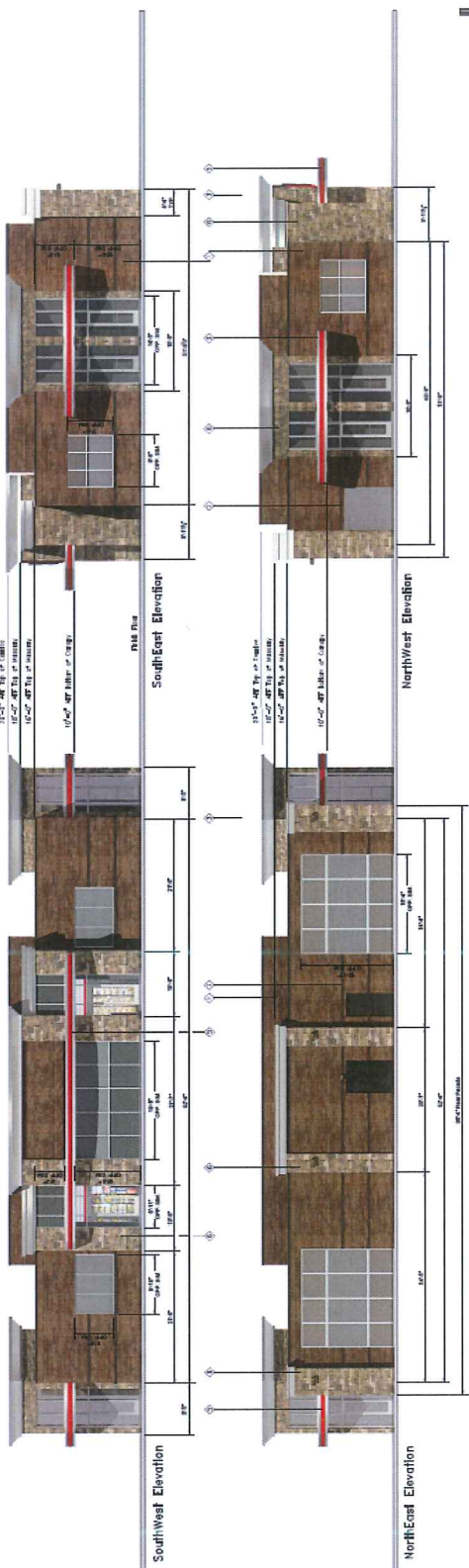
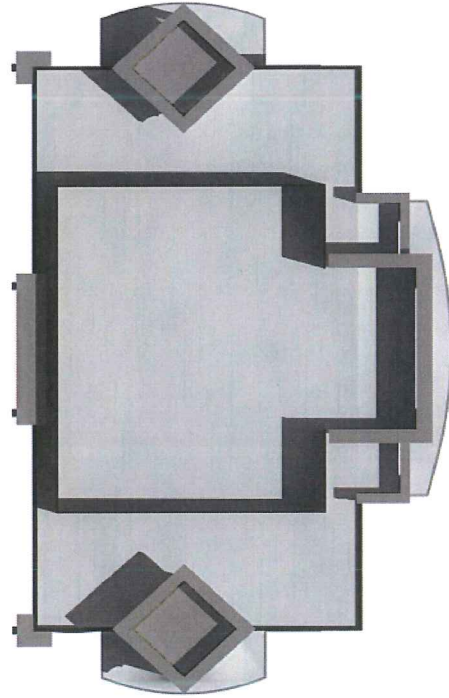
Exhibit A "The Property"




Building Design Category	Commercial
Total Building Footprint Area	4854sf
Elevation Footprint Area	1627sf
Exterior Wall Area	581sf
NE - 1411sf	
NE - 1895sf	
NW - 641sf	
SE - 523sf	
SE - 523sf	
NE - 1109sf	
NW - 598sf	
SW - 514sf	
NE - 451sf	
NW - 251sf	
Block-795sf	
Block-1975sf	

Front	TOTAL	STONE	BRICK	OTHER	GLAZING
SOUTHWEST FAÇADE	1627 SF	262 SF	678 SF	133 SF	514 SF = 32%
TOTAL MASONRY EXCLUDING DOORS/WINDOWS					
		1113 SF	940 SF = 84%		
SIDES					
SOUTHWEST FAÇADE / NORTHWEST FAÇADE	861 SF	122 SF	387 SF	79 SF	251 SF = 30%
TOTAL MASONRY EXCLUDING DOORS/WINDOWS					
		598 SF	519 SF = 87%		
REAR					
NORTHWEST FAÇADE	1595 SF	263 SF	701 SF	134 SF	487 SF = 31%
TOTAL MASONRY EXCLUDING DOORS/WINDOWS					
		1108 SF	974 SF = 88%		

Back	TOTAL	STONE	BRICK	OTHER	GLAZING
SOUTHWEST FAÇADE	1627 SF	262 SF	678 SF	133 SF	514 SF = 32%
TOTAL MASONRY EXCLUDING DOORS/WINDOWS					
		1113 SF	940 SF = 84%		
SIDES					
SOUTHWEST FAÇADE / NORTHWEST FAÇADE	861 SF	122 SF	387 SF	79 SF	251 SF = 30%
TOTAL MASONRY EXCLUDING DOORS/WINDOWS					
		598 SF	519 SF = 87%		
REAR					
NORTHWEST FAÇADE	1595 SF	263 SF	701 SF	134 SF	487 SF = 31%
TOTAL MASONRY EXCLUDING DOORS/WINDOWS					
		1108 SF	974 SF = 88%		





1103 S. Loop West
Tomball, TX 77375
713.345.1700

Store # 4034 Custom Angle 635 w/ 2' Deep Pilasters Schertz, TX

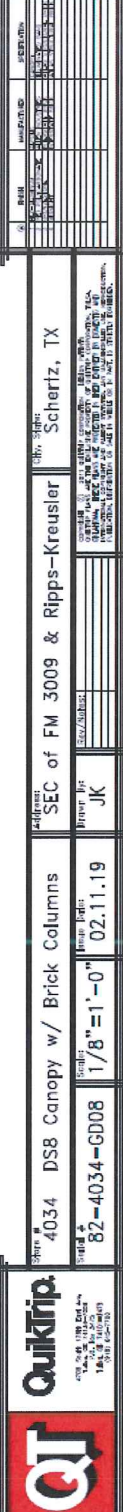
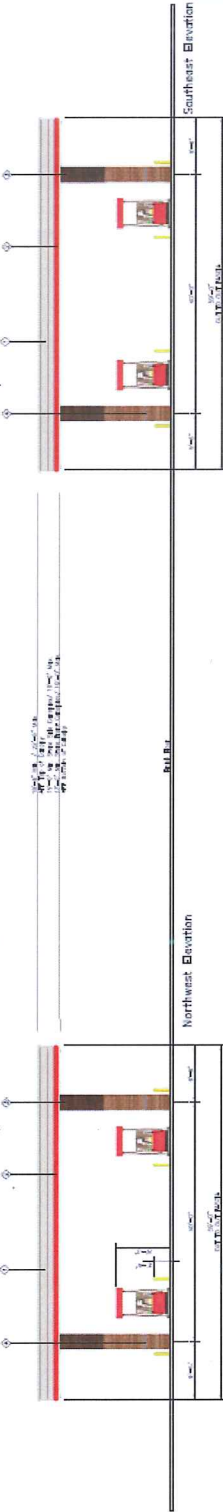
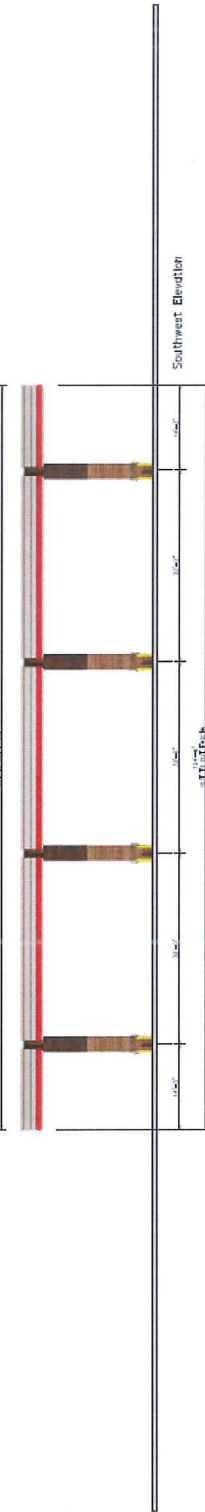
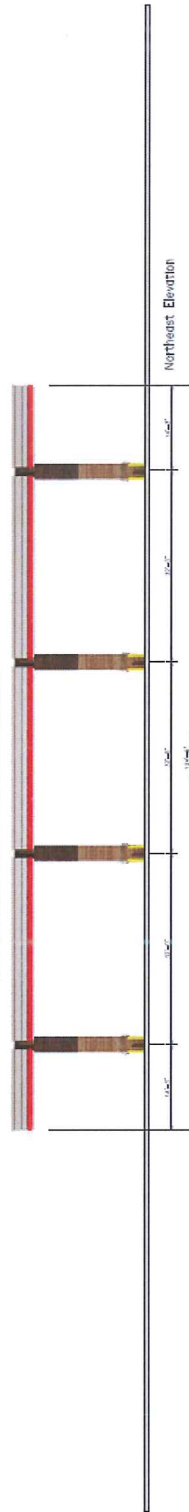
Address SEC of FM 3009 & Ripps-Kreusler

Store # 82-4034-635 1/16" = 1'-0" 02.08.19

Project # 82-4034-635

Client JK

Front	TOTAL	STONE	BRICK	OTHER	GLAZING	Comments
NORTHEAST FACE	631.3 F	34.4	278.3 F	433.3 F	0.4	100% DSB-4034 DSB-4034 DSB-4034
Right						
SOUTHWEST FACE	631.3 F	0.4	278.3 F	433.3 F	0.4	100% DSB-4034 DSB-4034 DSB-4034
Left						
NORTHEAST FACE	316.3 F	34.4	109.3 F	237.3 F	0.4	100% DSB-4034 DSB-4034 DSB-4034
Left						
SOUTHWEST FACE	316.3 F	0.4	109.3 F	237.3 F	0.4	100% DSB-4034 DSB-4034 DSB-4034
TOTAL MASONRY EXCLUDING BOARDS/WINDOWS						
	216.3 F	100%				
TOTAL MASONRY EXCLUDING BOARDS/WINDOWS						
	109.3 F	100%				
TOTAL MASONRY EXCLUDING BOARDS/WINDOWS						
	109.3 F	100%				



QuikTrip
 1485 S. UNIVERSITY BLVD
 SUITE 100
 SCHERTZ, TX 75081
 (972) 261-1119

4034 DSB Canopy w/ Brick Columns
 SEC of FM 3009 & Ripps-Kreusler
 Schertz, TX

Project # 82-4034-G008
 1/8"=1'-0"
 02.11.19

JK
 JK

JK
 JK

JK
 JK

JK
 JK