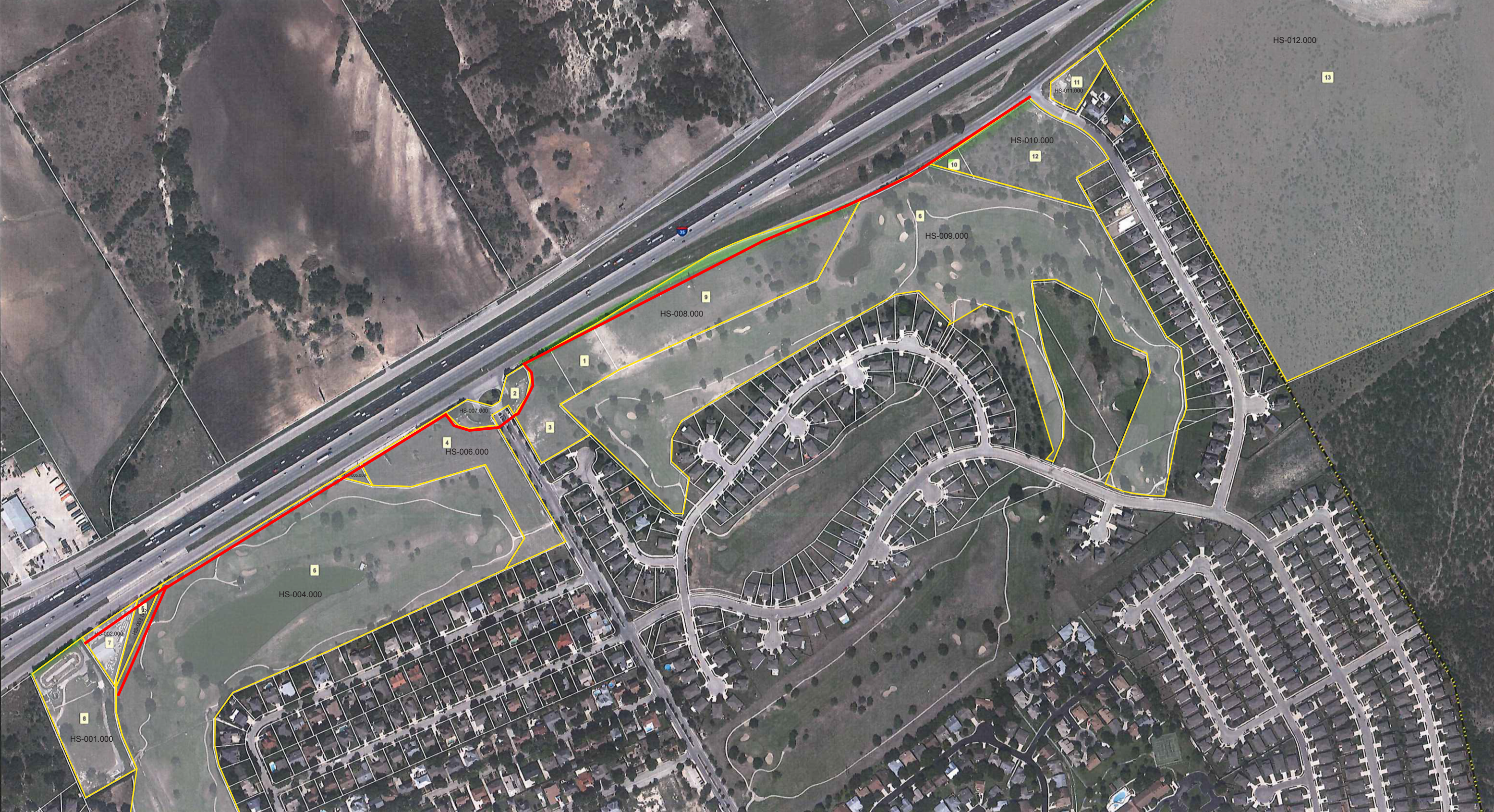


Property ID	Name	Legal Acres	Legal Description	Address Line1	Address Line2	City	State	Zip	GIS Acres
1	363447 SCHERTZ COMMERCIAL PARK LP	0	NORTHCLIFFE PLAZA, BLOCK 1, LOT 2		1155 DAIRY ASHFORD RD STE 725	HOUSTON	TX	77079	1.051035
2	75379 FAIRWAYS @ SCENIC HILLS HOA	0.812	A-175 SUR-98 R GARZA, ACRES 0.812	% SPECTRUM ASSOCIATION MGMT	17319 SAN PEDRO AVE STE 318	SAN ANTONIO	TX	78232	0.844498
3	363446 SCHERTZ COMMERCIAL PARK LP	0	NORTHCLIFFE PLAZA, BLOCK 1, LOT 1		1155 DAIRY ASHFORD RD STE 725	HOUSTON	TX	77079	1.905857
4	75321 TURNER MICHAEL SCOTT	4.735	A-175 SUR-98 R GARZA, ACRES 4.735		940 EIKEL ST	NEW BRAUNFELS	TX	78130	4.187845
5	110104 GREEN SIDE INVESTMENTS GROUP INC	0.119	A-175 SUR-98 R GARZA, ACRES 0.119		22340 N INTERSTATE 35	NEW BRAUNFELS	TX	78132	0.417379
6	75381 PATE CHEN INVESTMENTS LLC	56.48	A-175 SUR-98 R GARZA, ACRES 56.48	% DIEGO A LOPEZ	5301 COUNTRY CLUB BLVD	CIBOLO	TX	78108	58.627841
7	75318 THIRTY FIVE INVESTMENTS LTD	0.705	A-175 SUR-98 R GARZA, ACRES .705		5812 SAINT ANDREWS	SCHERTZ	TX	78108	0.824861
8	75317 GUADA BLANCO RVR AUTH	3.409	A-175 SUR-98 R GARZA, ACRES 3.409		933 E COURT ST	SEGUIN	TX	78155	3.666838
9	75323 SCHERTZ COMMERCIAL PARK LP	5.1095	A-175 SUR-98 R GARZA, ACRES 5.1095		1155 DAIRY ASHFORD RD STE 725	HOUSTON	TX	77079	6.634883
10	75316 SCHERTZ CITY OF	0.395	A-175 SUR-98 R GARZA, ACRES 0.395		1400 SCHERTZ PKWY	SCHERTZ	TX	78154	0.237589
11	146928 FAIRWAYS @ SCENIC HILLS HOA	0	FAIRWAYS AT SCENIC HILLS 3B (THE), BLOCK 17, LOT 27	% SPECTRUM ASSOCIATION MGMT	17319 SAN PEDRO AVE STE 318	SAN ANTONIO	TX	78232	0.723719
12	81296 SCHERTZ CITY OF	0	A-685 SUR-257 J F ZEPEDA		1400 SCHERTZ PKWY	SCHERTZ	TX	78154	3.821591
13	81298 MFP REALTY LP	64.778	A-685 SUR-257 J F ZEPEDA, ACRES 64.778, A-182 SUR-258 C M GAHAGAN		755 E MULBERRY AVE STE 600	SAN ANTONIO	TX	78212	64.716256



K&W
ENGINEERS + SURVEYING
 5427 PANASCOE PKWY, SUITE 200
 SAN ANTONIO, TEXAS 78227
 PHONE (210) 978-8444
 FAX (210) 978-8441

REVISIONS	ISSUE DATE

NORTEX
 OWNERSHIP