

Tract 1

Bexar County

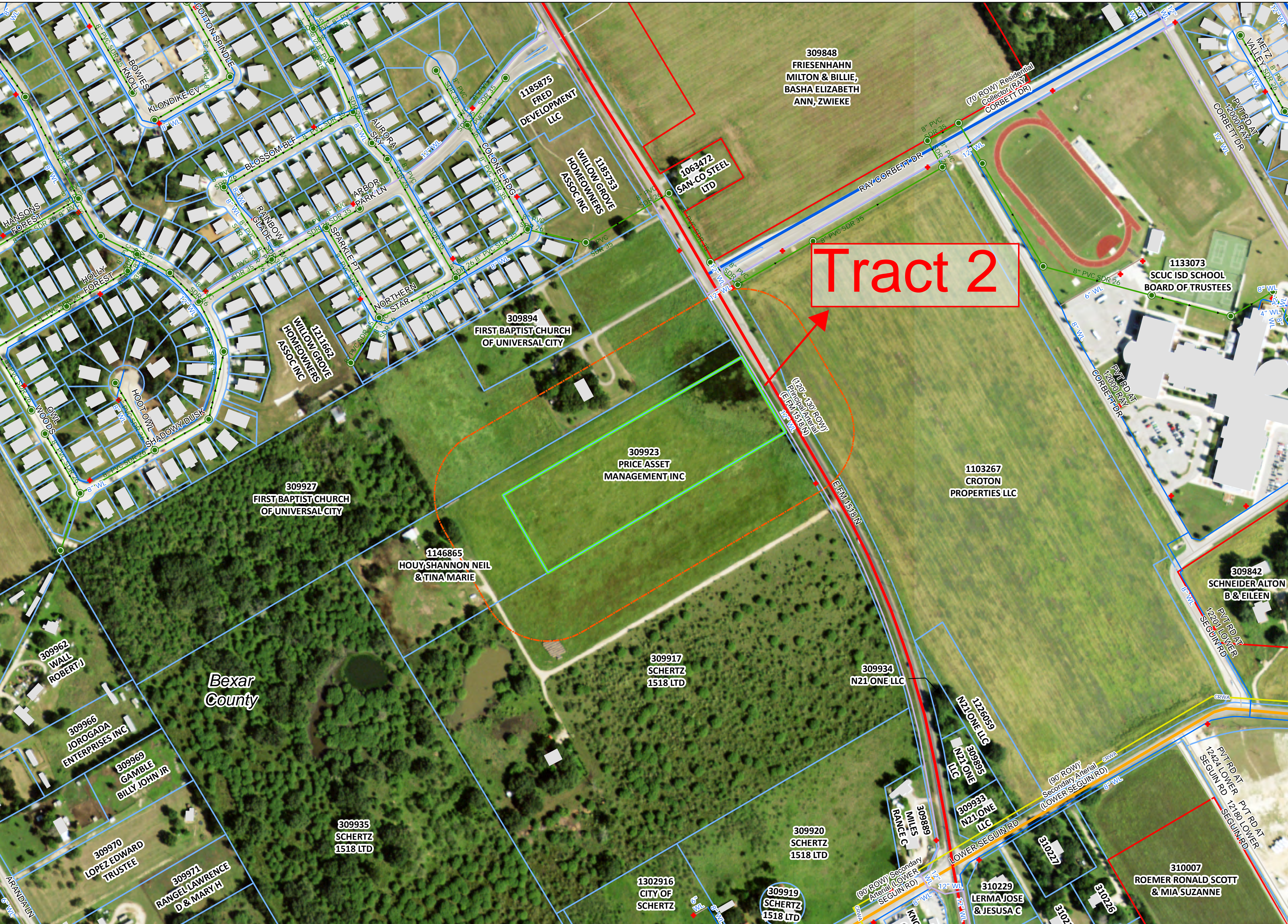


THE CROSSVINE
PDD AMENDMENT 5
TRACT 1

- | | | | | | | | |
|--------------------|----------------------------|----------------------------------|--------------------------------|------------|-----|------------------|---------------------|
| <all other values> | <all other values> | Planned Secondary Arterial | Commercial Collector B | 1", 1 1/2" | 10" | 30" | Schertz Gravity |
| Highways | Freeway | Secondary Rural Arterial | Planned Commercial Collector B | 2", 2 1/2" | 12" | 36" | Schertz Pressure |
| Major Roads | Principal Arterial | Planned Secondary Rural Arterial | Commercial Collector A | 3" | 16" | Neighboring Main | Neighboring Gravity |
| Minor Roads | Planned Principal Arterial | Residential Collector | Planned Commercial Collector A | 4" | 18" | Private | Private Pressure |
| Other Cities | Secondary Arterial | Planned Residential Collector | | 6" | 20" | | |
| | | | | 8" | 24" | | |

- | | | | | |
|---------|----------|-------------|----------------------------|-------------------|
| Hydrant | Manholes | 200' Buffer | Schertz Municipal Boundary | County Boundaries |
|---------|----------|-------------|----------------------------|-------------------|
- 1 Inch = 200 Feet
- 0 100 200 400 Feet

Tract 2



Bexar County



THE CROSSVINE
PDD AMENDMENT 5
TRACT 2

<all other values>	<all other values>	Planned Secondary Arterial	Commercial Collector B	1", 1 1/2"	10"	30"	Schertz Gravity	Hydrant
Highways	Freeway	Secondary Rural Arterial	Planned Commercial Collector B	2", 2 1/2"	12"	36"	Schertz Pressure	Manholes
Major Roads	Principal Arterial	Planned Secondary Rural Arterial	Commercial Collector A	3"	16"	Neighboring Main	Neighboring Gravity	200' Buffer
Minor Roads	Planned Principal Arterial	Residential Collector	Planned Commercial Collector A	4"	18"	Private	Private Pressure	Schertz Municipal Boundary
Other Cities	Secondary Arterial	Planned Residential Collector		6"	20"			County Boundaries
				8"	24"			

